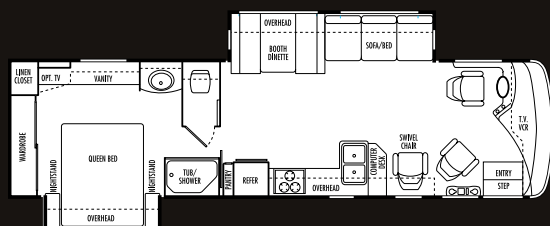
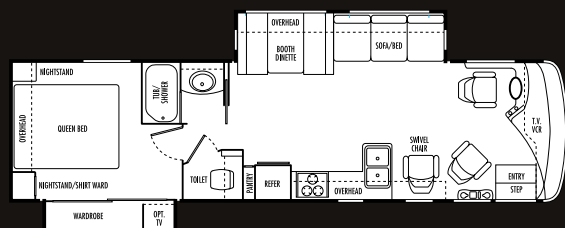


Sea Breeze BUS

two thousand two



SB340D



SB341D

NATIONAL RV
www.nationalrv.com

3411 North Perris Blvd. Perris, CA 92571
 909.943.6007

Due to continued product improvement, National R. V., Inc. reserves the right to change materials, colors, specifications and prices at any time without notification. Copyright © 2001 by National R. V., Inc. 05/01

SEA BREEZE BUS FEATURES & SPECIFICATIONS

Body Construction

- Duraframe® Steel Sub Floor Construction with Pass-Through Storage
- Steel Framed Floor
- Steel Framed Crowned Laminated Fiberglass Roof
- Laminated Steel Framed Gel-Coat Fiberglass Exterior Walls
- Molded High Gloss Fiberglass (2-pc) Front Cap/Bumper
- Molded High Gloss Fiberglass (1-pc) Rear Cap/Bumper
- Soft Touch Ceiling Material
- Electric Slide-Out Room(s)
- Custom Vinyl Exterior Graphics
- Molded Fiberglass Insulated Exterior Compartment Doors with Paddle Latches and Gas Struts
- Steel Framed, Insulated Compartment Floors with Trunk Liner (Not Sides)
- Steel Front Bulkhead
- Automotive Undercoating As Required

Chassis, Engine & Suspension

- Spartan® Summit 2000 Series Chassis
- Cummins® ISB Electronic 5.9 Liter Diesel Engine with 260 HP
- Wheelbase: 208"
- Torque: 550 ft./lbs. @ 1,600 RPM
- Allison® 1000 Series 5 Speed Automatic with Overdrive and Lock-Up Torque Converter
- Morse® T-Handle Shifter
- 100 Gallon Fuel Capacity
- Leece-Neville® 160 Amp Alternator
- Rear Axle Ratio: 4.63:1
- Full Air Suspension with Bilstein® Tuned Gas Shock Absorbers
- TRW TAS 40 Internal Hydraulic Assisted Power Steering Gear
- Stainless Steel Wheel Simulators with Valve Extensions
- Air Over Hydraulic Brakes
- Goodyear® Tires 245/75 R22.5 G159
- Engine Intake Air Heater
- Midland Pure Air Plus Air Dryer
- Farr Air Cleaner
- Engine Mounted Fuel/Water Separator
- Remote Mounted Air Filter Restriction Indicator
- Front GAWR: 8,500 lbs.
- Rear GAWR: 13,500 lbs.
- GVWR: 22,000 lbs.
- Rear and Driver Side Front Mud Flaps
- 5,000 lb. Class III Trailer Hitch and 6-Point Connector

Cockpit Features

- Passenger Side Console/Convenience Tray with Cup Holders
- Electronic Tuned AM/FM CD Stereo and Four Speakers
- Driver and Passenger Map Lights
- Pantographic Windshield Wipers with Intermittent Switch
- Power Controlled Heated Exterior Mirrors

- Power Steering
- Electronic Cruise Control
- Douglas Tilt and Telescopic Steering Column
- 18" Vinyl Padded Steering Wheel
- Stereo/TV Switch
- Auxiliary Start Switch
- Generator Hour Meter with Start and Stop Switch on Dash
- Flip-Down Acrylic Sun Visors
- Driver and Passenger Recliner Seats with Swivel Bases
- 12 Volt 110 Volt Phone Receptacles in Passenger Side Console
- Driver's Convenience Tray with Cup Holders
- Centrex® Dash and Drive Side Console

Appliances & Accessories

- 8 Cu. Ft. Two Way Refrigerator
- 21" High Output Three-Burner Range with Oven
- Systems Monitor Panel
- Overhead Cabinet Mounted Microwave
- TV Antenna and 12 Volt Booster with 110 Volt Receptacle and TV Jack(s)
- 27" Color TV with Remote Control in Living Room
- Cable TV Hook-Up and Telephone Jacks

Interiors

- Praxis Oak Cabinet Paneling
- Solid Wood Square Raised Panel Cabinet Doors (Praxis Oak) on Upper Cabinets
- Side-Opening Overhead Storage Doors
- Catches on All Storage Doors
- Solid Wood Drawer Faces with Dado-Joint Construction
- Praxis Oak Finish Face Frame Cabinetry
- Ball Bearing Roller Drawer Guides
- Corian® Kitchen Countertop with Back Splash and Wood Cutting Block Sink Cover
- Decorative Vinyl Border above Kitchen Back and Side Splashes
- Trash Container in Kitchen
- Pull-Out Pantry (Next to Refrigerator)
- Laminated Lavy Top with Vinyl Molding Edge
- Framed Picture on Bath Wall (In Lounge Area)
- Large Porcelain Double Sink (Undermount)
- Medicine Cabinet with Mirror above Lavy Sink in Bathroom
- Towel Ring Next to Lavy Sink
- Towel Bars on Back of Bathroom Door
- 60" x 80" Queen Bed
- Bedspread and Shams with Pillows
- Wardrobe with Mirrored Sliding Doors
- Swivel Recliner with Seat Belt
- Booth Dinette with Doors
- Nylon Carpeting and Pad in Bedroom and Living Areas
- Vinyl Flooring in Kitchen and Bath
- Recessed Controls Center
- Mini-Blinds and Lambrequins in Living Room and Bedroom
- 72" Wonder-bed Sofa with Designer Pillows

- Nightstands with Laminate Tops with Woodgrain Edge Molding
- Mini-Blinds and Valances in Kitchen
- Interior Wall Vinyl

Electrical System & Lights

- 30 Amp 120 Volt Distribution Panel and Cord
- Easy Access 12 Volt Fuse Panel Located in Rear Passenger Side Compartment
- LPG Generac® 6.6 kW Generator
- Two Auxiliary 6 Volt Batteries
- Battery Disconnect Switch
- Porch Light
- Patio Receptacle in Luggage Box
- Three Water Pump Switches (Kitchen, Bath and Dump Station)
- Cosmetic Light in Bathroom (3-Light)
- Incandescent Lights in Ceiling
- Fluorescent Light in Galley
- Storage Compartment Lights

Plumbing & LPG Systems

- Demand Water System and Shur-Flo® Water Pump
- 6-Gallon LPG Water Heater with Electronic Ignition (DSI)
- Water Heater By-Pass Valve
- Pressured Water Fill and Water Distribution System with Pressure Regulator
- Black Tank Flush System
- Outside Shower Located in Service/Dump Station Compartment
- One-Piece Fiberglass Tub and Shower
- Clear Glass Shower Enclosure
- Thetford® Marine Toilet with Foot Controls
- Single Lever Kitchen Faucet
- Decorative Lavy Faucet
- Heated Systems Compartment with Easy Access Hook-Ups
- Heated Holding and Fresh Water Tank Compartments with Return Air

Safety Features

- Fire Extinguisher
- Deadbolt Lock on Entrance Door
- 120 Volt GFI Protected Circuit (Kitchen, Bath and Exterior)
- LPG Detector
- Smoke Detector
- Carbon Monoxide Detector
- Driver and Passenger 3-Point Seat Belts (Lap and Shoulder)
- Egress Window(s)
- Exterior Grab Handle
- Interior Grab Handle

Windows, Doors & Awnings

- 15 Foot Patio Awning
- Radius Dual Pane Windows with 22% Tinted Safety Glass
- Power Double Step Entrance with Light

- Sliding Windows in Living Area, Kitchen, Bedroom and Driving Area
- Radius Entrance Door with Clear Glass and Roller Shade
- Entry Screen Door and Anti-Skid Steps

Heating, Vents & Air Conditioning

- 15,000 BTU Low Profile Ducted Roof A/C with Thermostat
- Dash Heating and A/C System with Defroster
- 35,000 BTU Ducted Electronic Ignition Furnace with Thermostat
- 12 Volt Roof Vent in Bath
- 12 Volt Attic Fan with Wall Thermostat in Living Area

Options

- Living Room Slide-Out Awning Topper
- Bedroom Slide-Out Awning Topper
- 4-Point Hydraulic Leveling Jacks
- VCR
- DVD Player
- 10-Disc CD Changer
- 19" Color TV with Remote Control in Bedroom
- Kitchen Counter Top Extension
- 8 Cu. Ft. Refrigerator with Ice Maker
- "Max Air Package": Dual Low-Profile Ducted 13,500 BTU Roof A/C's with 50 AMP Service
- Dining Table with Two Wooden and Two Folding Chairs
- Two Dash Fans
- Pleated Day and Night Shades in Living Area and Bedroom
- 6 Gallon Gas/Electric Hot Water Heater
- Diesel 7.5 kW Generac® Generator
- CSA Package
- Rear Back-Up Camera and Monitor
- Aluminum Rear Ladder

Weights (lbs.)	SB340D	SB341D
Gross Vehicle Weight Rating	22,000	22,000
Gross Combined Weight Rating	26,000	26,000
Front Gross Axle Weight Rating	8,500	8,500
Rear Gross Axle Weight Rating	13,500	13,500
Unloaded Vehicle Weight	19,310	TBD
Maximum Carrying Capacity	2,690	TBD

Measurements	SB340D	SB341D
Wheelbase	208"	208"
Overall Length	34' 10"	34' 10"
Overall Height (Road)	11' 9"	11' 9"
Interior Height	79 1/4"	79 1/4"
Interior Width	98 1/4"	98 1/4"
Exterior Width	102"	102"

Tank Capacities (gal.)	SB340D	SB341D
Water Heater	6	6
Grey Tank	60	60
Black Tank	45	45
Fresh Water Tank(s)	84	84
LPG Tank (Wet Capacity)	69	69