

Zephyr

Dutchmen

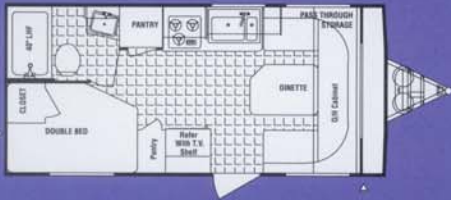
Dutchmen
Ultralite
Travel Trailers
and
Fifth Wheels

Where do you want to go?

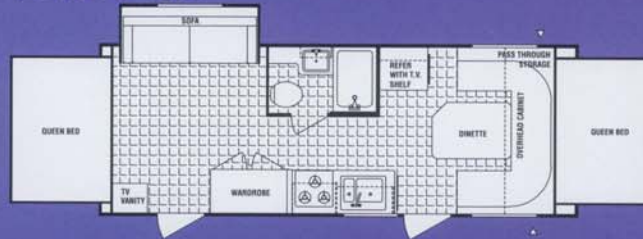


8' wide Travel Trailers

21FDU



25FDT-SSL



25FDU



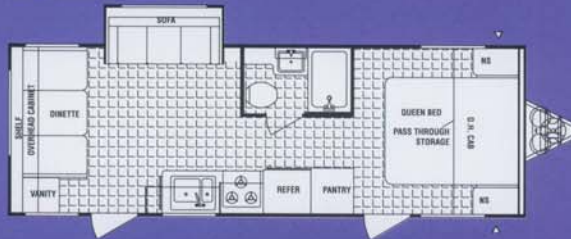
25QBU



27BHU



27RDU-SSL

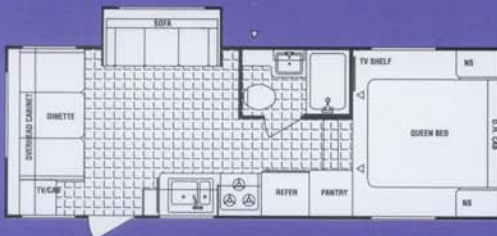


28FLU-SSL

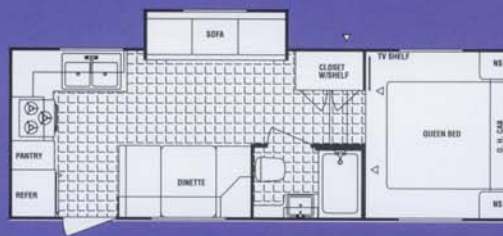


8' wide Fifth Wheels

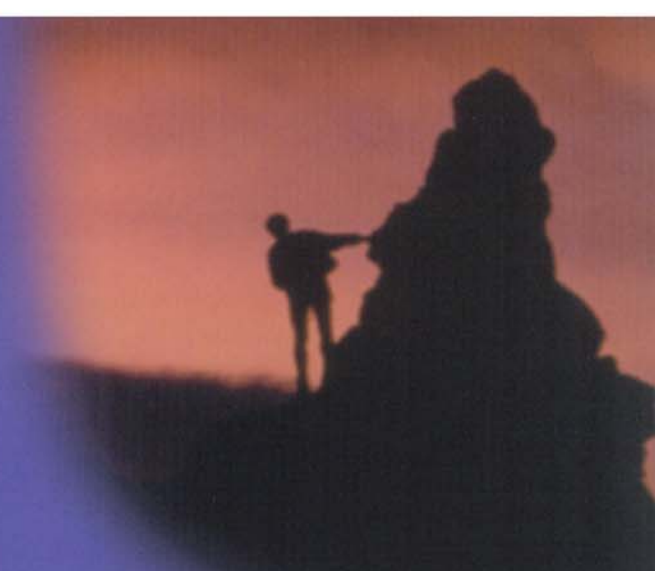
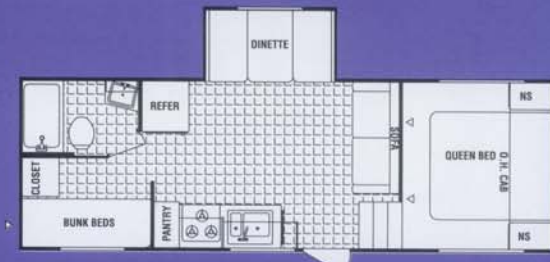
24RDU-M5-SSL



24RKU-M5-SSL



25BHU-M5-SSL



Zephyr takes you there!

Whether you are shopping for your first trailer or are an experienced RVer, the all new Dutchmen Zephyr Ultralite is sure to fill your needs. This exciting new line of lightweight travel trailers and fifth wheels offers all the convenience of much larger towables but yet are light enough to be pulled by most sport-utility vehicles, pickups and minivans.

The laminated fiberglass sidewalls are aluminum framed and not only look great but are strong and durable. Because of the size, the units are easy to maneuver and even easier to tow.

You will find the inside to be roomy and have all the convenience of home. A full hot water system, furnace, gas/electric refrigerator and a full bathroom are just a few of the standard interior features. You will be surprised at how much is packed into such a small package.

With many floor plans there is sure to be a Zephyr to fit your needs. Several floor plans have a standard slide-out giving you even more interior space. Also be sure to check out the three tent models. When open, they expand the trailer length and give you two additional beds.

And what about after your purchase? Your new Zephyr comes with a full two year bumper to bumper warranty and a complimentary 1 year roadside assistance program membership offering you 24 hour assistance when traveling.

Check out the all new Zephyr today. You'll be glad you did.

Thor's Exclusive Full 2-Year Standard Warranty

We're so confident in the design and construction of our products that they are covered by Thor's exclusive Full 2-Year Standard Warranty: "Hitch-to-Bumper" coverage to protect your RV investment. The best protection in the RV industry - by far!

7' wide Travel Trailers

717FD-TENT



721FD-TENT



723FD-SSL-TENT



	717FD-TENT	721FD-TENT	723FD-SSL-TENT	21FDU	25FDT-SSL	25FDU	25QBU	278HU	27RDU-SSL	28FLU-SSL	24RDU-M5-SSL	24RKU-M5-SSL	258HU-M5-SSL
LENGTH	17'8"	21'8"	23'8"	21'8"	N/A	25'8"	25'8"	27'8"	N/A	N/A	N/A	N/A	N/A
EXTERIOR WIDTH	7'3"	7'3"	7'3"	8'	8'	8'	8'	8'	8'	8'	8'	8'	8'
EXTERIOR HEIGHT	8'3"	8'3"	8'3"	8'3"	8'3"	8'3"	8'3"	8'3"	8'3"	8'3"	N/A	N/A	N/A
HITCH DRY WEIGHT	167	306	413	333	N/A	463	318	326	N/A	N/A	N/A	N/A	N/A
GVWR	3487	4706	4813	4733	N/A	4863	4718	5326	N/A	N/A	N/A	N/A	N/A
UVW	2350	2965	3408	3135	N/A	3473	3579	3701	N/A	N/A	N/A	N/A	N/A
NCC	1137	1741	1405	1598	N/A	1390	1139	1625	N/A	N/A	N/A	N/A	N/A
FRESH WATER	25	25	25	25	N/A	25	25	25	N/A	N/A	N/A	N/A	N/A
GREY WATER/BLACK WATER	22/12.5	22/22	22/22	22/22	N/A	22/22	25/22	22/22	N/A	N/A	N/A	N/A	N/A
TIRE SIZE	ST205/75R14	ST205/75R14	ST205/75R14	ST205/75R14	N/A	ST175/80R13	ST175/80R13	ST175/80R13	N/A	N/A	N/A	N/A	N/A
FURNACE SIZE BTU'S	11M	11M	11M	25M	N/A	25M	25M	25M	N/A	N/A	N/A	N/A	N/A

Product information, specifications and photography in this brochure were as accurate as possible at the time of printing. Photography may contain some features that are optional on your vehicle. Since we continually strive to improve our products, actual products may differ. Prices and specifications are subject to change without notice. All capacities are approximate and dimensions are nominal. Some features or options may be different or unavailable in Canada.

Vehicle Loading - Every effort has been made to provide the greatest number of options for the recreation vehicle owner. Along with these choices comes the responsibility to manage the loads that are imposed by the choices so that they remain within the manufacturer's specified chassis weight limits. Do not overload the recreation vehicle.

Dry weights based on standard features; optional equipment not included. New carrying capacity (NCC) determined by subtracting unloaded vehicle weight (UVW) from gross vehicle weight (GVWR) and includes fluids, options and cargo. Liquid capacities and weights are approximations only.

Warning: This information is intended as a guide only. Weights of individual vehicles may vary. Consult your owner's manual for complete loading, weighing and towing instructions.



Exterior

- Aerodynamic Front Profile
- Independent Torsion Suspension System
- Laminated, Welded Aluminum-Framed Walls and Floor
- Smooth Fiberglass Exterior
- Box Channel, Steel Cambered Chassis
- 10" Electric Brakes
- Durable Molded Wheel-Well
- One-Piece Seamless Rubber Roof
- Beadboard Insulation
- 26" Wide Main Radius Entry Door w/Window & Screen
- Reinforced Screen Door w/Lock Shield & Kick Pad
- Flush Combo Entry Latch/Dead Bolt
- Large, Through-Storage Side Compartment "Storage Plus"
- Skylight Roof Vents
- Battery Compartment
- Below Floor Water & Waste Tanks

Interior

- 3 Color Coordinated Designer Interiors

- Oak Framed Mortise and Tenon Cabinet Doors
- Full Length Vinyl Flooring Throughout
- Mini-Blinds Throughout
- Décor Coordinated Bedspread
- Quality Furniture

Galley

- Double Bowl Sink*
- Galley Storage
- 120 Volt Appliance Receptacle at Countertop
- High-Pressure Laminated Countertop
- Décor Wall Border*
- Single Door Refrigerator

Bath

- Oval Sink
- Overhead Medicine Cabinet w/Mirror
- Thetford Toilet
- ABS Tub Surround

Appliances/Equipment

- Norelco® LP/Electric Refrigerator
- Atwood 3-Burner Cook Top*

- Range Hood w/12 Volt Light and Exhaust Fan
- Wall-Mounted Systems Monitor Panel
- LP Fast Recovery 6-Gallon Water Heater
- Hydro-Flame Furnace w/Thermostat
- Smoke Detector
- Fire Extinguisher
- LPG Leak Detector
- Water Heater Bypass
- Prepped for Exterior 2 Burner Stove

Electrical

- Electronic Converter w/Built in Battery Charger
- 120 Volt Central Electrical Panel
- 120 Volt Ground Fault Circuit Protection
- Pre-wired for Air Conditioner
- Pre-wired for Microwave

Popular Options

- 13,500 BTU Roof Air Conditioner
- AM/FM Cassette Stereo
- AM/FM CD Player
- Stabilizer Jacks

- Spare Tire/Carrier/Cover
- TV Antenna w/Booster
- Bike Rack - 2 or 4 Bike
- Exterior 2 Burner Stove
- Exterior Entertainment Center
- Outside Shower
- Rear Ladder*
- LP Tank Cover
- A&E Patio Awning
- Microwave w/Turntable
- Safety Glass
- 30# LP Bottles
- Sink Cover*
- Stove Cover*
- 3 Burner Stove with Oven
- Bathroom Skylight*
- 6 Cubic ft. Double Door Refrigerator*
- 12 Volt Ultra Heat Pads - All Tanks
- 6 Gallon Gas/Electric Water Heater w/DSI
- Bunk End Lights (2 Pair)*
- Electric Front Jacks on Fifth Wheels
- Bunk Bed Sheets

* Not all models include all features or options. See your dealer for complete details.



Dutchmen Manufacturing

305 Steury Avenue
Goshen, IN 46528
219-534-1224

www.dutchmen-RV.com



Printed on Recycled Paper

This brochure is printed on recycled paper as part of Thor's corporate effort to minimize waste and conserve our natural resources. Providing safe, fuel-efficient recreational vehicles is Thor's way of further demonstrating our role as the industry leader in safeguarding our nation's environment.

Dealer

Name _____
Address _____
City _____ State _____ Zip _____
Phone _____
E-mail _____

Statement of Thor History:

Why a Thor Product is Your Best RV Value. Thor Industries, Inc., listed on the New York Stock Exchange, proudly traces its history back seventy years to the pioneering days of the RV industry with the founding of Airstream, the Industry's oldest and most renowned brand. Our total commitment to quality and our philosophy of putting our customers first has led to our continuous growth: today Thor is the second largest builder of RV's in North America. Thor's strong financial condition and years of solid growth are your assurance that we will be here to serve you for years to come. We think this extra peace of mind is important when you are making a significant investment. Because we are #2, we work harder than other manufacturers to satisfy you. Our customers are always #1 with us.