

EMPRESS 06

EMPRESS ELITE AND EMPRESS



EMPRESS 06

Go ahead, spoil yourself.

Getting to where you've arrived in life has meant never settling for second best. So why start now? Empress Elite represents the most luxurious motorhome in Triple E's fleet, sparing nothing in terms of quality or comfort. Working from a solid Freightliner foundation equipped with a powerful Cummins ISL 400 HP Diesel Engine, Empress Elite offers an amazing array of features including a four season Climate Guard® system – offering the best insulation values in its class – and top-of-the-line Flexsteel furniture throughout. If you seek the superior comfort the discerning traveller demands, you're ready for Empress.



A4002 Shown with Rocky Mountain Decor



Be completely at home in the master bedroom thanks to features like a residential style dresser with mirror, an extra-spacious wardrobe, large bedroom window and a swing-out flat-screen TV (select models only).



Empress Elite's wrap around cockpit (new for 2006) ensures that the driver remains in full control at all times. An in-dash GPS unit is optional.



Movies and sports never looked better thanks to the standard 32" LCD widescreen TV for Empress Elite's home theatre system that comes with surround sound standard.

New for 06

- Cabinet doors mitred with rope inlay
- Stainless steel finish on refrigerator and micro/convection oven
- Heated ceramic tile flooring with granite inlay
- 32" widescreen LCD television

Empress Elite



No need to make a trip to the laundromat thanks to this optional washer and dryer that tucks neatly into the master bedroom.

Empress Elite's spacious galley gives you lots of elbow room for cooking and features such thoughtful elements as a slide-out counter extension and a tiled backsplash with granite inlay.



The bathroom features a separate room for the lavatory, complete with its own sink and window.



On select models extra dining area is provided thanks to this extendable solid surface table that comes with two solid wood chairs and two extra folding chairs.

Reduce your cleaning chores with this optional dishwasher, which can be chosen in lieu of an oven.



Empress Elite's professionally styled interior is nicely accented by its flat vinyl ceiling and halogen accent lighting throughout.



There's no shortage of food storage thanks to Empress Elite's large four door 12 cubic foot stainless steel refrigerator which includes an ice maker.



You're sure to love Empress Elite's many smart details including an oversize entrance door, ceramic tile flooring with granite inlay and plenty of overhead storage in the living area.



Empress Elite

Fall in love all over again.

If the road is your passion, then why cut corners? Empress gives you everything a seasoned traveller would want in an RV and more. From its well appointed and spacious master bedroom to a living area that makes you feel like you never left home, Empress will surely delight you at every turn with its many comforts and thoughtful details. More than that, it has been built for the long haul and features a low maintenance Freightliner chassis equipped with a highly dependable Caterpillar C7 350 HP or a Cummins ISL 400 HP engine, giving you more than enough power to take on any challenge the road throws in your way. So take to the road with confidence; you're riding like royalty in Empress.



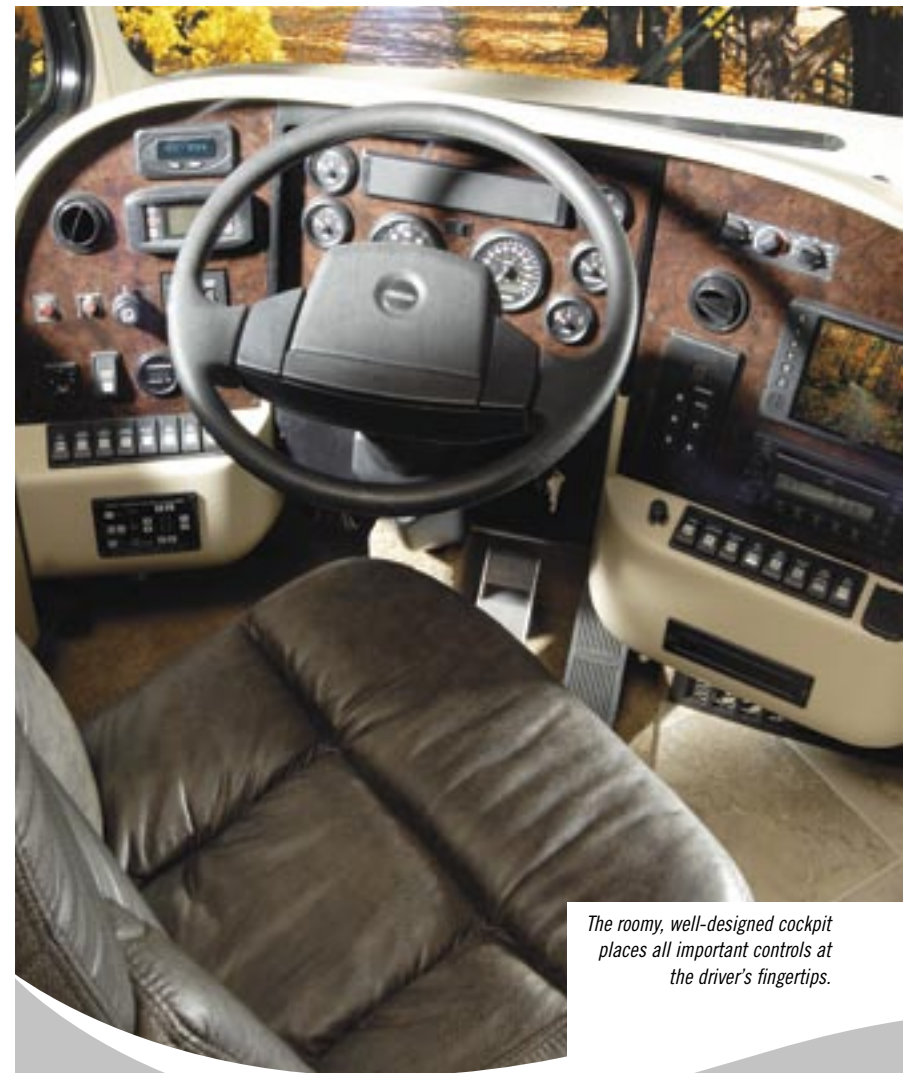
A3902FB Shown with Thoroughbred Decor



You'll dine in comfort and style thanks to Empress's fashionable dining area complete with a solid wood wall mount table with four matching chairs, two of which are folding.



Style doesn't take a back seat in Empress's master bedroom which features an attractive reversible bedspread with matching fabric wrapped headboard and accent pillows.



The roomy, well-designed cockpit places all important controls at the driver's fingertips.

New for 06

- Whole House water filtration system
- Optional side by side 12 cubic foot refrigerator with ice maker
- "Golden Maple" cabinetry now standard

Empress



Most of Empress's systems and major components can be managed through this easy to access control panel.



Yes you can take it with you thanks to Empress's extra-large exterior storage compartment with optional easy roll cargo slides.



Other nice features of Empress's kitchen include its solid surface countertop and full extension easy sliding drawers on ball-bearing tracks.



The smart design carries through to the bathroom where you will find the same solid surface countertop and oil rubbed bronze fixtures. Storage is also ample thanks to two under sink cabinets and a large medicine cabinet.



The smartly styled kitchen includes such attractive details as a large stainless steel sink with oil rubbed bronze fixtures.

Colour Options

SLATE



SONOMA



EXTERIOR
(OPTIONAL
FULL BODY
PAINT)



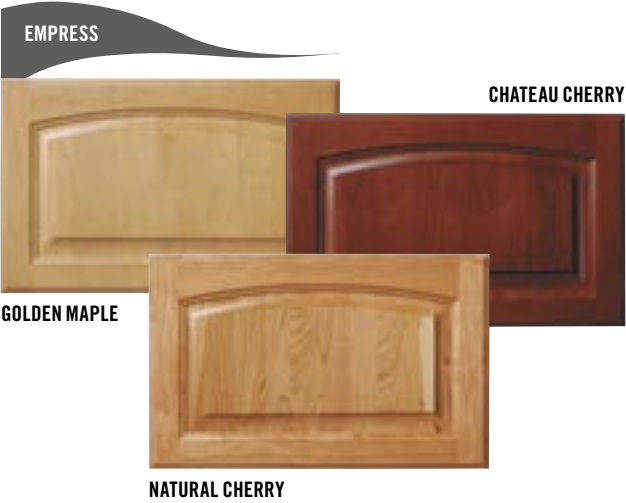
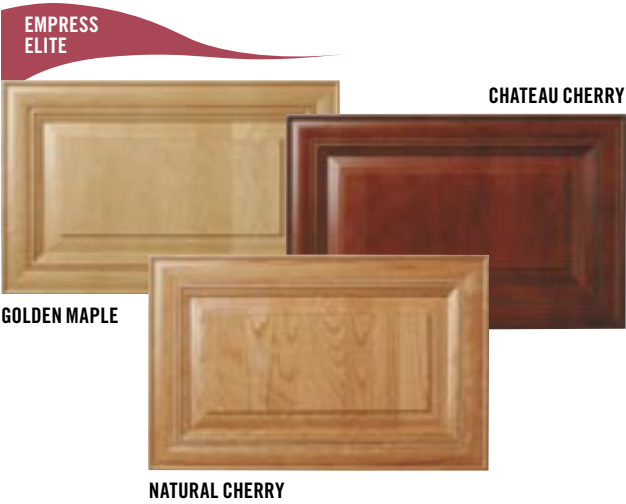
RIVIERA



RUSSET

Colour Options (CONTINUED)

Personalize Empress to your own tastes with your choice of four interior décor combinations and four distinctive exterior treatments. Each design motif has been selected by professional interior designers to skilfully coordinate all visual elements for an overall effect that is both warm and inviting.



Visit www.tripleerv.com for more information on available options.

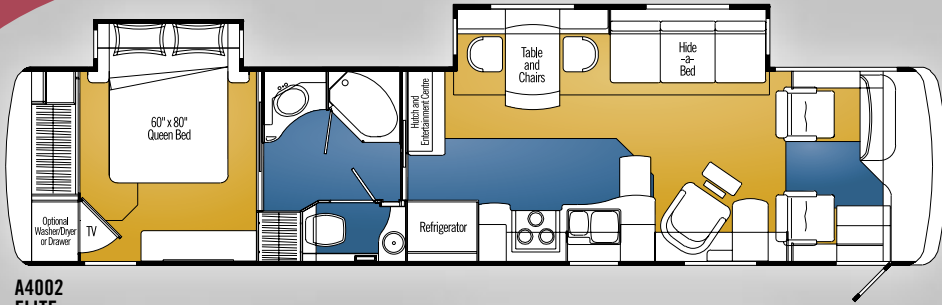
| | GOLDEN GATE | ROCKY MOUNTAIN | THOROUGHbred | FOX AND HOUND |
|----------------|-------------|----------------|--------------|---------------|
| SOFA | | | | |
| BEDSPREAD | | | | |
| ACCENT | | | | |
| CARPET | | | | |
| CAPTAIN CHAIRS | | | | |

Floor Plans

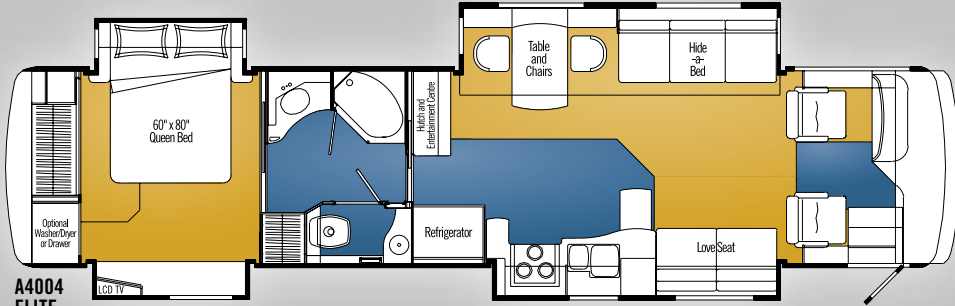
CARPET

CERAMIC
TILE

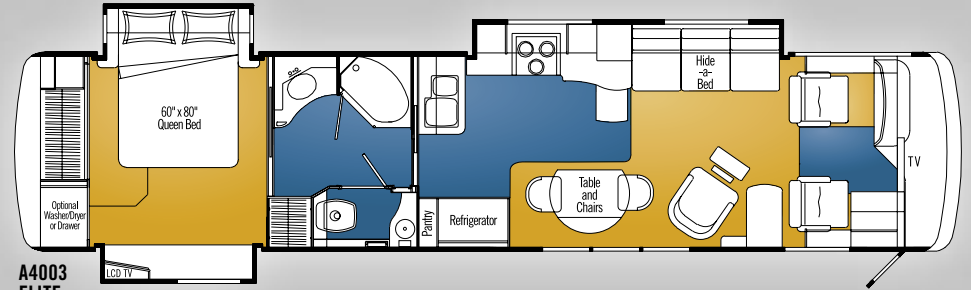
Empress Elite



A4002
ELITE

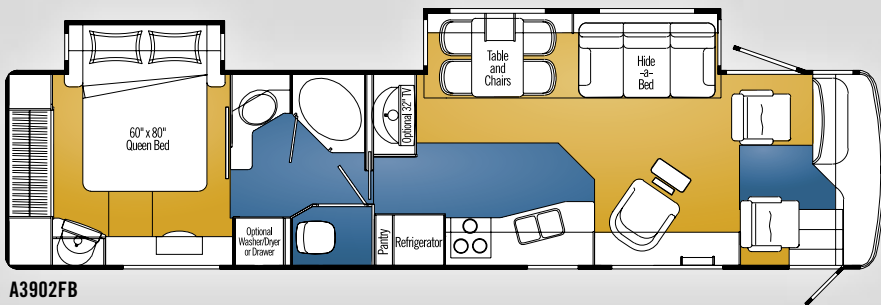


A4004
ELITE

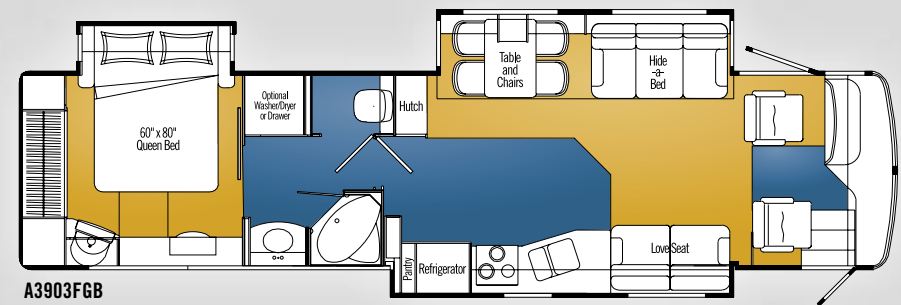


A4003
ELITE

Empress



A3902FB



A3903FGB

Interior Comfort and Exterior Protection

Born of our northern heritage, Triple E's exclusive Climate Guard® system is quite simply the best interior comfort and exterior protection package available in the recreational vehicle industry today. The Climate Guard® system has been developed with today's motorhome enthusiast in mind. It provides year round climate controlled comfort for passengers as well as built in protection for the motorhome itself, ensuring years of trouble free operation and enjoyment.



The major considerations in building a top quality motorhome are long lasting beauty coupled with the ability to stand up to all weather conditions. The coach is an aluminium and steel framed structure with vacuum bonded gel coat fibreglass sidewalls and a domed roof finished with a seamless FRP Flexroof.



Interior Comfort

- Dometic® roof air conditioners, ducted front to rear, control the temperature throughout the coach.
- High output chassis air conditioner provides travelling comfort.
- Electronic ignition furnace designed to maintain requested interior temperatures through extreme exterior temperatures.
- High output chassis heater for quick windshield defrost.
- A rear auxiliary automotive heater – complete with electric coolant valve – makes travel comfortable while heating the fresh water and holding tank compartments.
- Vacuum bonded, aluminium framed, insulated sidewall and roof construction provides structural strength and maintained warmth throughout the coach.
- Coach windows are designed with a dual pane construction – impeding the transfer of cold to make the interior of the window warmer and less subject to condensation.
- Optional insulated vent covers provide superior insulation for the fantastic fans and roof vents.

Exterior Protection

- Scratch and hail resistant gel coat fibreglass sidewalls with all weather exterior finish are easy to maintain and will not rust, pit, or fade.
- A domed, seamless, insulated, one piece FRP Flexroof promotes quick water run off and minimizes exterior maintenance.
- Durable undercoating protects against dust and moisture and reduces stone and road noise.
- Steel enclosed, fibreglass insulated and heated fresh water and holding tanks assure extreme cold climate performance for your plumbing system. Tanks are heated from two different sources – the motorhome's ducted furnace while parked and the rear auxiliary automotive heater when travelling.
- Winterization system complete with potable antifreeze tank allows you to easily drain tanks and fill water lines with potable antifreeze.
- Steel, insulated, and sealed firewall protects the driver and passengers from the outside elements.
- Additional 1/2" thermal break insulation beyond the standard 1" Styrofoam block insulation separates the climate controlled interior from the outside elements.

FLOOR

- 1 One Piece Woven Poly-Propylene Underbelly
- 2 Plywood (3/8")
- 3 Tubular Steel Framing (Welded)
- 4 Styrofoam Filled Wall Support Plates
- 5 Block Styrofoam Insulation (1")
- 6 Plywood (1/2")
- 7 Carpet Underlay
- 8 Carpeting (Floor covering)

SIDEWALLS

- 1 Seamless Gelcoat Fibreglass Exterior
- 2 Lauan Structural Backer
- 3 Aluminium Framing (Welded)
- 4 Styrofoam Filled Floor and Roof Plate
- 5 Block Styrofoam Insulation (1")
- 6 Styrofoam Thermal Break Insulation (1/2")
- 7 Interior Decorative Lauan Wall Panels

ROOF

- 1 One Piece FRP Flexroof
- 2 Lauan Backer
- 3 Aluminium Roof Truss
- 4 Styrofoam Filled Roof Truss Supports
- 5 Block Styrofoam Insulation (1 1/2")
- 6 Enclosed/Insulated Climate Control Ducting
- 7 Block Styrofoam Thermal Break Insulation (2")
- 8 Plywood (3/8")
- 9 Padded Vinyl Headliner

Specifications

| EMPRESS 2006 | A4002 ELITE | A4003 ELITE | A4004 ELITE | A3902FB | A3903FGB |
|---|--------------------|--------------------|--------------------|---------------------|---------------------|
| GVWR lbs. (kg) | 34,320 (15 567) | 34,320 (15 567) | 34,320 (15 567) | 32,000 (14 545) | 32,000 (14 545) |
| UVW lbs. (kg) | 25,783 (11 719) | TBD | TBD | 25,783 (11 719) | 26,935 (12 217) |
| NCC lbs. (kg) | 6,217 (2 826) | TBD | TBD | 6,217 (2 826) | 5,065 (2 297) |
| Wheelbase in. (mm) | 266" (6 756) | 266" (6 756) | 266" (6 756) | 252" (6 401) | 252" (6 401) |
| Length ft. (mm) | 40' 2" (12 243) | 40' 2" (12 243) | 40' 2" (12 243) | 38' 10" (11 836) | 38' 10" (11 836) |
| Width ft. (mm) | 8' 4" (2 534) | 8' 4" (2 534) | 8' 4" (2 534) | 8' 4" (2 534) | 8' 4" (2 534) |
| Height* ft. (mm) | 12' 4" (3 758) | 12' 4" (3 758) | 12' 4" (3 758) | 12' 3" (3 734) | 12' 3" (3 734) |
| Water Tank Capacity** U.S. gal. (L) | 104 (393) | 104 (393) | 104 (393) | 102 (386) | 102 (386) |
| Water Heater U.S. gal. (L) | 12 (45) | 12 (45) | 12 (45) | 10 (38) | 10 (38) |
| Black Holding Tank Capacity U.S. gal. (L) | 57 (216) | 57 (216) | 57 (216) | 57 (216) | 57 (216) |
| Grey Holding Tank Capacity U.S. gal. (L) | 57 (216) | 57 (216) | 57 (216) | 57 (216) | 57 (216) |
| Fuel Capacity gal. (L) | 100 (379) | 100 (379) | 100 (379) | 100 (379) | 100 (379) |
| Propane Capacity gal. (L) | 32 (121) | 32 (121) | 32 (121) | 32 (121) | 32 (121) |
| *Includes air conditioner **Includes water heater | | | | | |

GVWR (GROSS VEHICLE WEIGHT RATING)

The maximum permissible weight of this motorhome. The GVWR is equal to or greater than the sum of the unloaded vehicle weight (UVW) plus the net carrying capacity (NCC).

UVW (UNLOADED VEHICLE WEIGHT)

The weight of the motorhome as built at the factory with full fuel, engine oil, and coolants. The UVW does not include cargo, fresh water, LP gas, occupants, factory or dealer installed accessories.

NCC (NET CARRYING CAPACITY)

The maximum weight of all occupants, including the driver, personal belongings, food, fresh water, LP gas, tools, tongue weight of towed vehicle, factory and dealer installed accessories, etc., that can be carried by this motorhome. (NCC is equal to or less than GVWR minus UVW.)

Please see your dealer for weights of factory installed options.

Standards and Options

| VEHICULAR | A4002 ELITE | A4003 ELITE | A4004 ELITE | A3902FB | A3903FGB |
|--|-------------|-------------|-------------|---------|----------|
| Air Brakes with Slack Adjusters | S | S | S | S | S |
| Air Horns | S | S | S | S | S |
| Air Suspension with Bilstein Shock Absorbers | S | S | S | S | S |
| Alternator – 160 Amp | S | S | S | S | S |
| Block Heater (1,000 W) with Switch in Convenience Centre | S | S | S | S | S |
| Blower – Overhead Blower Assembly above Windshield | S | S | S | - | - |
| Bumpers – Integrated Fibreglass, Steel Reinforced | S | S | S | S | S |
| Chassis – Freightliner with Caterpillar C7, 350 HP Turbo Diesel (XC Series) Raised Rail Side Radiator with Exhaust Brake | - | - | - | S | S |
| Chassis – Freightliner with Cummins ISL 400 HP Turbo Diesel (XC Series) Raised Rail Side Radiator with Engine Brake | S | S | S | 0 | 0 |
| Compass/Thermometer – Dash Mounted Directional Compass with Exterior Temperature | S | S | S | S | S |
| Cruise Control | S | S | S | S | S |
| Dash Air Conditioner and Heat – Chassis | - | - | - | S | S |
| Dash Air Conditioner and Heat – Dual Blower | S | S | S | - | - |
| Door – Driver Door with Power Window | - | - | - | S | S |
| Fans – Chrome Cockpit Ventilating with Dash Switch | - | - | - | S | S |
| Fuel Fill – Concealed Locking Fuel Fill Access on Both Sides | S | S | S | S | S |
| Headlights – Styled with Halogen Bulbs | S | S | S | S | S |
| Hitch – Trailer Hitch Receiver with Wiring and Plug, 10,000 lb. | S | S | S | S | S |
| IFS – ZF Independent Front Suspension | S | S | S | S | S |
| Jacks – Automatic HWH Levelling System with Auto Air Dump | S | S | S | S | S |
| Light – High Mount Stoplight – LED Long Life | S | S | S | S | S |
| Lights – Halogen Automotive Driving Lights | S | S | S | S | S |
| Lights – LED Exterior Clearance Lights | S | S | S | - | - |
| Mats – Driver/Passenger Floor Mats | S | S | S | S | S |
| Mirrors – Heated Remote Chrome Power Mirrors | S | S | S | S | S |
| Mud Guard – Monogramed Triple E Rear Mudguard (Stainless Steel on Rubber) | S | S | S | 0 | 0 |
| Rust Protection | S | S | S | S | S |
| Slide-Out – Electric Slide-Out System in Bedroom | S | S | S | S | S |
| Steering Wheel with Leather Cover | - | - | - | S | S |
| Steering Wheel with Leather Cover, VIP Controls include Wiper and Washer Tilt/Telescopic | S | S | S | - | - |
| Switch – Battery Selector for Radio | S | S | S | S | S |
| Switch – Battery Boost (Coach to Chassis Batteries) | S | S | S | S | S |
| Tires – Radial 275/80R22.5 | S | S | S | S | S |
| Transmission – Allison 3000 MH Six Speed Automatic with Lock Up | S | S | S | S | S |
| Transmission Cooler | S | S | S | S | S |
| Transmission Temperature Gauge | S | S | S | S | S |
| Undercoating – Automotive Type | S | S | S | S | S |
| Wheels – Aluminium | S | S | S | S | S |
| Wipers – Wet Arm 28" Windshield Wipers with Intermittent Function | S | S | S | - | - |
| Wipers – Wet Arm Windshield Wipers with Intermittent Function | - | - | - | S | S |
| CONSTRUCTION | | | | | |
| Baggage Doors – Aluminium Baggage Doors with Gas Struts and Slam Latches | S | S | S | S | S |
| Baggage Doors – Side Swing Aluminium Baggage Doors with Gas Struts and Slam Latches under Curbside Sideout | - | - | S | - | - |
| Fibreglass Moulded Front and Rear Mask | S | S | S | S | S |
| Roof – Domed Kemlite FRP Flexroof | S | S | S | S | S |
| Steel Cab Floor, Firewall and Dash Structure | S | S | S | S | S |
| Vacuum Bonded Aluminium Framed Insulated Sidewall and Roof Construction with Thermal Break | S | S | S | S | S |
| Vacuum Bonded Gelcoat Fibreglass Sidewalls | S | S | S | S | S |
| Vacuum Bonded Steel Framed Insulated Floor Construction | S | S | S | S | S |
| Windows – Thermal Pane | S | S | S | S | S |
| New for 06 S Standard 0 Optional | | | | | |

Standards and Options (CONTINUED)



COACH EXTERIOR

| | A4002 ELITE | A4003 ELITE | A4004 ELITE | A3902FB | A3903F6B |
|---|-------------|-------------|-------------|---------|----------|
| Cargo Slide – Mounted in Forward Baggage Bay (N/A with Freezer and Exterior TV) | 0 | 0 | 0 | 0 | 0 |
| Cargo Slide – Mounted in Rear Baggage Bay | 0 | 0 | 0 | 0 | 0 |
| Diamondshield® Paint Protection Film – Invisible Bra | S | S | S | 0 | 0 |
| Door – Screened Entry Door with Deadbolt Lock | S | S | S | S | S |
| Exterior Shower | S | S | S | S | S |
| Graphics – Painted Exterior Graphics | S | S | S | S | S |
| Handle – Entry and Driver Door Assist Handles (Interior Mounted) | - | - | - | S | S |
| Handle – Entry Door Assist Handle (Interior Mounted) | S | S | S | - | - |
| Ladder – Exterior Ladder with Detachable Lower Section | S | S | S | S | S |
| Lights – Deluxe Patio Lights (2) | S | S | S | S | S |
| Lights – Docking Lamps (2 Side, 2 Rear) | - | - | - | S | S |
| ⚡ Lights – Docking Lamps (4 Side) | S | S | S | - | - |
| Paint – Full Body Exterior Paint with Clear Coat | S | S | S | 0 | 0 |
| Step – Exterior Electric Retractable Entry Step | S | S | S | S | S |

COACH INTERIOR

| | | | | | |
|---|---|---|---|---|---|
| Bedsprad – Decorative Bedsprad with Throw Pillows | S | S | S | S | S |
| Blinds – Side Driver and Passenger Roller Blinds | S | S | S | S | S |
| ⚡ Cabinet Doors – Mitred with Rope Inlay and European Hidden Hinges | S | S | S | - | - |
| Cabinet Doors – Sculptured Solid Wood Panel Cabinet Doors | - | - | - | S | S |
| ⚡ Cabinetry – “Golden Maple” Cabinetry with Solid Maple Cabinet Face Frames and Panelling | S | S | S | S | S |
| ⚡ Cabinetry – “Chateau Cherry” Cabinetry with Solid Cherry Face Frames and Panelling | 0 | 0 | 0 | 0 | 0 |
| Cabinetry – “Natural Cherry” Cabinetry with Solid Cherry Face Frames and Panelling | 0 | 0 | 0 | 0 | 0 |
| Ceiling – Domed with Padded Vinyl Headliner | - | - | - | S | S |
| ⚡ Ceiling – Flat Vinyl Headliner | S | S | S | - | - |
| ⚡ Cover – Hydraulic Powered Front Step Cover | S | S | S | - | - |
| Cover – Pneumatic Powered Front Step Cover | - | - | - | S | S |
| Covers – Insulated Vent Covers | 0 | 0 | 0 | 0 | 0 |
| Detectors – Electronic Smoke, LP and CO Detectors | S | S | S | S | S |
| ⚡ Drawers – Full Extension Ball Bearing Drawer Tracks | S | S | S | S | S |
| Drawers – Slide-Out Drawer Option in Washer/Dryer Cabinet (N/A with Washer/Dryer Option) | 0 | 0 | 0 | 0 | 0 |
| Fire Extinguisher – Dry Chemical | S | S | S | S | S |
| Flooring – Ceramic Tile in Entrance Area | S | S | S | S | S |
| Headboard – Fabric Wrapped | - | - | - | S | S |
| ⚡ Headboard – Wood Framed and Upholstered | S | S | S | - | - |
| Latches – Snap Latches on all Cabinet Doors | S | S | S | S | S |
| Lighting – Courtesy Floor Lamps | S | S | S | S | S |
| Safe – Keylock Safebox | S | S | S | S | S |
| Shades – Day/Night Pleated with Bedroom Blackout | S | S | S | S | S |
| Skylight in Living Area | - | - | - | 0 | 0 |
| Slide-Out – Bed Slide-Out with Rear Wardrobe and Make-Up Table | - | - | - | S | S |
| Slide-Out – Bed Slide-Out with Rear Wardrobe and Residential Style Dresser with Mirror and Tip-Out Laundry Hamper | S | - | S | - | - |
| Slide-Out – Flush Floor HWH Hydraulic Slide-Out System in Living Area with Electric Travel Locks | S | S | S | S | S |
| Slide-Out – Galley Slide-Out on Passenger Side with Love Seat | - | - | S | - | - |
| Slide-Out – Wardrobe Slide-Out in Bedroom with 20" TV | - | S | S | - | - |
| Storage – Easy Under Bed Storage with Gas Struts | - | - | - | S | S |
| ⚡ Storage – Under Bed Storage Drawer | S | S | S | - | - |
| Sun Visor – Power Centre Sun Visor with Switch on Dash | - | - | - | 0 | 0 |
| Sun Visor – Power Driver and Passenger Sun Visor (Meet in Centre) | S | S | S | S | S |
| Tray – Dash Mounted Computer Tray | - | - | - | 0 | 0 |

FURNITURE

| | A4002 ELITE | A4003 ELITE | A4004 ELITE | A3902FB | A3903F6B |
|---|-------------|-------------|-------------|---------|----------|
| Booth Dinette – Booth Dinette with Slide-Out Drawers and Solid Wood Pedestal Mount Table | - | - | - | 0 | 0 |
| Cabinet – Refreshment Centre (6 Bottle) (only available with Recliner on Passenger's Side) | - | - | - | 0 | - |
| Chair – Ultra Leather Recliner with Flip Table | - | - | - | S | - |
| Chair – Ultra Leather Recliner with Side Table | S | S | - | - | - |
| Chairs – Two Additional Solid Wood Chairs for Dining Table | 0 | - | 0 | - | - |
| Chairs – Two Additional Solid Wood Chairs for Dining Table with Second Leaf for Table | - | - | - | 0 | 0 |
| Hide-A-Bed – Cloth Hide-A-Bed on Driver's Side with Air Coil Mattress with 110 Volt Air Pump | - | - | - | S | S |
| Hide-A-Bed – Ultra Leather Hide a Bed on the Driver's Side with Air Coil Mattress | S | S | S | 0 | 0 |
| Mattress – Residential Quality Queen Bed | - | - | - | S | S |
| Mattress – Upgrade | S | S | S | 0 | 0 |
| Seat – Ultra Leather Swivel Driver Captain Chair with Integral Seat Belt – Six-Way Power | - | - | - | S | S |
| Seat – Ultra Leather Swivel Driver Captain Chair with Integral Seat Belt – Eight-Way Power | S | S | S | - | - |
| ⚡ Seat – Ultra Leather Swivel Passenger “Buddy Seat” with Integral Seat Belt and Power Foot Rest – Eight-Way Power | S | S | S | - | - |
| Seat – Ultra Leather Swivel Passenger Captain Chair with Integral Seat Belt and Power Foot Rest – Six-Way Power | - | - | - | S | S |
| Sofa – Ultra Leather Easy Bed on Passenger's Side | 0 | 0 | S | 0 | S |
| Stool – Stool for Make-Up Table | - | - | - | S | S |
| Table – Round Solid Wood Table with Upholstered Dining Chairs | - | S | - | - | - |
| ⚡ Table – Solid Surface Extendable Cantilevered Wall Mount Table with Hutch with Two Solid Wood Chairs and Two Folding Chairs | S | - | S | - | - |
| Table – Solid Wood Wall Mount Table with Two Solid Wood Chairs and Two Folding Chairs | - | - | - | S | S |

GALLEY FEATURES

| | | | | | |
|---|---|---|---|---|---|
| ⚡ Backsplash – Tiled backsplash in Galley with Granite Inlay | S | S | S | - | - |
| Cooktop – Recessed Cooktop with High Output Sealed Burner and Solid Surface Covers | S | S | S | S | S |
| Counter Extension – Slide-Out Counter Extension in Galley | - | - | - | S | S |
| ⚡ Counter Extension – Slide-Out Extension with Solid Surface Top and Storage | S | - | - | - | - |
| ⚡ Counter Extension – Stationary Counter Extension in Galley | - | S | S | - | - |
| Countertop – Solid Surface Countertop with Matching Cutting Board Sink Covers | S | S | S | S | S |
| ⚡ Dishwasher ILO Oven (N/A with Gas Oven Option on Elite Series Empress) | 0 | 0 | 0 | - | - |
| Fan – Thermostatically Controlled Fan in Living Area | S | S | S | S | S |
| ⚡ Faucets – Deluxe Single Lever Faucet | S | S | S | - | - |
| Faucets – Single Lever Faucet | - | - | - | S | S |
| Flooring – Ceramic Tile Flooring | - | - | - | S | S |
| ⚡ Flooring – Ceramic Tile Flooring with Granite Inlay | S | S | S | - | - |
| Flooring – Thermostatically Controlled Heating Element Under Ceramic Tile in Galley | S | S | S | 0 | 0 |
| Micro/Convection Oven – (OTR) with 110 Volt Range Hood and Light | - | - | - | S | S |
| ⚡ Micro/Convection Oven – Stainless Steel Finish (OTR) with 110 Volt Range Hood and Light | S | S | S | - | - |
| Oven – LP Gas Oven (N/A with Dishwasher Option on Elite Series Empress) | 0 | 0 | 0 | 0 | 0 |
| ⚡ Refrigerator – Dometic Side by Side 12 cu. ft. with Ice Maker LP/Electric, Wood Inserts in Doors (Deletes One Pantry) | - | - | - | 0 | 0 |
| Refrigerator – Norcold 4 Door 12 cu. ft. with Ice Maker LP/Electric, Stainless Steel Finish Doors | S | S | S | - | - |
| Refrigerator – Dometic Two Door 10 cu. ft. with Ice Maker, LP/Electric, Wood Inserts in Doors with Two Slide-Out Pantries | - | - | - | S | S |
| ⚡ Sink – Stainless Steel | S | S | S | S | S |
| Slide-Out Butcher Block on Locking Tracks with Knife Drawer in Lieu of Top Drawer Under the Oven | 0 | 0 | 0 | 0 | 0 |



EMPRESS

LAVATORY

| | A4002 ELITE | A4003 ELITE | A4004 ELITE | A3902FB | A3903FGB |
|---|-------------|-------------|-------------|---------|----------|
| Countertop – Solid Surface Counter and Basin | S | S | S | S | S |
| Fan – Thermostatically Controlled Fan in Bath | S | S | S | S | S |
| Fan – Thermostatically Controlled Non Reversible Fan in Toilet Room | S | S | S | S | S |
| Faucet – Deluxe Faucets | S | S | S | S | S |
| Flooring – Ceramic Tile Flooring | - | - | - | S | S |
| ⚡ Flooring – Ceramic Tile Flooring with Granite Inlay | S | S | S | - | - |
| Flooring – Thermostatically Controlled Heating Element Under Ceramic Tile in Lavatory | S | S | S | 0 | 0 |
| Shower – Neo Angle Fibreglass Enclosed Shower | 0 | 0 | 0 | 0 | S |
| ⚡ Sink – Stainless Sink with Deluxe Faucet in Toilet Room | S | S | S | - | - |
| Skylight – Neo Angle in Shower Compartment | S | S | S | S | S |
| Toilet – Concerto China Toilet with Sprayer | S | S | S | S | S |
| Tub – Enclosed Fibreglass Garden Tub | S | S | S | S | - |
| Window with Valance and Venetian Blind in Toilet Room | S | S | S | S | S |

ENTERTAINMENT

| | | | | | |
|--|---|---|---|---|---|
| CB Antenna – Includes Coax Lead Under Dash | S | S | S | S | S |
| CD Changer – 10 Stack CD Changer (N/A with AM/FM/Cassette/CD) | 0 | 0 | 0 | 0 | 0 |
| DVD/VCR Combo Unit | - | - | - | S | S |
| GPS Navigation System – Pioneer | 0 | 0 | 0 | - | - |
| ⚡ Home Theatre System – 500 W, 6 Channel with Subwoofer with DVD and VCR | S | S | S | - | - |
| Master Control – Deluxe Audio/Video Master Control Switch Box | - | - | - | S | S |
| Master Control – Deluxe Audio/Video Master Control Switch Box WITH RCA Cables | S | S | S | - | - |
| ⚡ Pre-Wire – Satellite Dish Pre-Wire with 12 Volt Power and Motosat Cable | S | S | S | S | S |
| ⚡ Satellite Dish – Motosat 18" Executive with DVB Automatic Acquisition and Identification | 0 | 0 | 0 | 0 | 0 |
| Stereo – AM/FM Weather Band Receiver with Cassette/CD Player with Big Button | 0 | 0 | 0 | 0 | 0 |
| Stereo – AM/FM Weather Band Receiver with CD Player in Dash with Big Button | S | S | S | S | S |
| Stereo – DHS Mobile Theatre System, 5 Channel Stereo with Subwoofers | - | - | - | 0 | 0 |
| Stereo – Exterior AM/FM – CD Stereo with Shielded Speakers | 0 | 0 | 0 | 0 | 0 |
| Stereo – Separate AM/FM CD Stereo in Bedroom with Alarm | S | S | S | S | S |
| Telephone and Cable TV Hook-Up – Exterior | S | S | S | S | S |
| TV – AC 20" Flat Screen Exterior TV in Baggage Compartment with Slide-Out Tray | - | - | - | 0 | - |
| TV – AC 20" Flat Screen Colour Stereo TV with Remote in Bedroom | - | S | S | S | S |
| TV – AC 20" Flat Screen Colour Stereo TV with Remote in Overhead Console | - | - | - | - | S |
| TV – AC 20" Flat Screen Colour Stereo TV with Remote in Bedroom in Swing-Out Cabinet | S | - | - | - | - |
| TV – AC 20" LCD Widescreen with Remote in Bedroom in Dresser Slide-Out | - | S | S | - | - |
| TV – AC 32" Flat Screen Colour Stereo TV with Remote in Entertainment Cabinet Behind Slide-Out | - | - | - | S | - |
| ⚡ TV – AC 32" LCD Widescreen TV with Remote in Entertainment Cabinet Behind Slide-Out | S | - | S | - | - |
| ⚡ TV – AC 32" LCD Widescreen TV with Remote in Front Overhead Cabinet | - | S | - | - | - |
| TV Antenna – Roof Top Retractable Antenna with Booster, Dash Mounted "Antenna Up" light | S | S | S | S | S |

HEATING VENTILATING AND AIR CONDITIONING

| | | | | | |
|---|---|---|---|---|---|
| Air Conditioner – Dual Centrally Ducted 13,500 BTU with Heat Strip and Remote Return Air | S | S | S | - | - |
| Air Conditioner – Dual Ducted (2) 13,500 BTU with Heat Pump | 0 | 0 | 0 | 0 | 0 |
| Air Conditioner – Dual Ducted (2) 13,500 BTU with Heat Strip | - | - | - | S | S |
| Furnace – 40,000 BTU Central Furnace with Electronic Ignition and In Floor Ducting | - | - | - | S | S |
| Furnaces – Dual 35,000 BTU Central Furnaces with Electronic Ignition and In-Floor Ducting | S | S | S | - | - |
| Heater – Dual Rear Auxiliary Automotive Heaters with Electric Valve | S | S | S | S | S |

ELECTRICAL

| | | | | | |
|---|---|---|---|---|---|
| Alarm System with Two Motion Detectors | S | S | S | 0 | 0 |
| Batteries – 4 x 6 Volt Deep Cycle Auxiliary Battery with Slide-Out Battery Tray | S | S | S | S | S |
| Battery Disconnect – Chassis Batteries | S | S | S | S | S |
| Bidirectional Isolator Relay Delay (BIRD) Battery Charging System | S | S | S | S | S |
| Convenience Centre – Mounted Mid Ship includes, Level Monitor, Block heater, Thermostat, EMS controls, Inverter Control | S | S | S | S | S |
| ⚡ Generator – 5.5 KW Onan Quiet Diesel on Slide-Out Tray | - | - | - | S | S |
| ⚡ Generator – 7.5 KW Onan Quiet Diesel with Dash Mounted Hour Meter | S | S | S | 0 | 0 |
| Inverter – 2000 Watt Inverter with 100 Amp Charger with Freedom Remote | S | S | S | S | S |
| Panel – 50 Amp Electrical Service with Energy Management System | S | S | S | S | S |
| Power Cord Reel – 50 Amp Power Cord Reel | S | S | S | 0 | 0 |
| Pre-Wire – 12/110 Volt Receptacles in Baggage Compartment (Freezer Prep) | S | S | S | S | S |
| Pre-Wire for Solar Panel | S | S | S | S | S |
| Pre-Wire for Power Main Awning | S | S | S | S | S |
| Switch – Electronic Battery Disconnect (Coach Batteries) | S | S | S | S | S |

PLUMBING AND LP SYSTEMS

| | | | | | |
|--|---|---|---|---|---|
| Black Tank Flush System | S | S | S | S | S |
| Holder – Swing-Out Underbody Sewer Hose Holder | - | - | - | S | S |
| Holder – Tip Down Underbody Sewer Hose Holder | S | S | S | - | - |
| Holding Tanks – Enclosed and Insulated, Dual Heated Waste Holding Tanks | S | S | S | S | S |
| LP Tank – Easy Access Propane Tank | S | S | S | S | S |
| Switch – Three-Way Water Pump Switching | S | S | S | S | S |
| Washer/Dryer Prep Package | S | S | S | S | S |
| ⚡ Water Filter – Whole House Water Filter in Utility Module | S | S | S | S | S |
| Water Heater – Electronic Ignition Gas/Electric/Motoraid Water Heater (10 U.S. gal.) | - | - | - | S | S |
| Water Heater – Electronic Ignition Gas/Electric/Motoraid Water Heater (12 U.S. gal.) | S | S | S | - | - |
| Water Hose Reel | S | S | S | - | - |
| Water Pump – Variable Speed Water Pump | S | S | S | - | - |
| Water Tank – Enclosed and Insulated, Dual Heated Fresh Water Tank | S | S | S | S | S |
| Winterization System with Potable Antifreeze Pick-Up Tank | S | S | S | S | S |

SYSTEMS

| | | | | | |
|---|---|---|---|---|---|
| Central Vacuum with Outlet in Baggage Compartment | S | S | S | S | S |
| Freezer/Refrigerator – On Slide-Out Tray 1.38 cu. ft. (AC/DC) | 0 | 0 | - | 0 | - |
| Rear View Camera/Monitor – Colour LCD Display Mounted in Dash | S | S | S | S | S |
| Washer/Dryer (Vented) | 0 | 0 | 0 | 0 | 0 |

OPTIONAL AWNING PACKAGES

| | | | | | |
|--|----|----|----|----|----|
| Awning – Weathershield Equipped A&E Two-Step, Acrylic (length shown) | - | - | - | 18 | 18 |
| Awning – Weathershield Equipped A&E Elite Slide Topper (number of awnings shown) | 2 | 2 | 3 | 2 | 2 |
| Awning – Weathershield Equipped A&E Elite Window Awnings (Main Slide Windows and Bedroom Window) | 0 | 0 | 0 | 0 | 0 |
| Awning – Weathershield Equipped Weatherpro Power, Acrylic with Remote and Wind Sensor (length shown) | 18 | 18 | 18 | 18 | 18 |
| Awning – Front Door Awning – A&E Oasis Power with Remote | 0 | 0 | 0 | 0 | 0 |
| Awning – Front Door Awning – A&E Oasis Manual | - | - | - | 0 | 0 |

| | | | | | |
|----------------|---|---|---|---|---|
| Factory P.D.I. | 0 | 0 | 0 | 0 | 0 |
|----------------|---|---|---|---|---|

⚡ New for 06 S Standard 0 Optional

Two Year Limited Warranty

Triple E is proud to offer a two year limited warranty on structure as well as most major components. Please see your dealer for further details.

A reputation for excellence since 1965.



Founder P.W. Enns with the first Triple E Class A motorhome.



The first Triple E 13' travel trailer manufactured in 1965.

For over forty years Triple E has produced style, comfort, durability and uncompromising quality in recreation vehicles. We've built our reputation by maintaining full control of the manufacturing process, and almost everything you see in the finished product has been built on site to our renowned high standards, plus those of the Canadian Standards Association or Recreational Vehicle Industry Association. Triple E was also one of the first RV manufacturers to achieve ISO 9001:2000 certification. If you demand the best in your RV, you've found it in Triple E.

Coach Net

Triple E is a proud partner of Coach Net, an extensive support program providing complete and fully paid roadside assistance, emergency road service, and special warranty support benefits that follow you throughout Canada and the U.S. Service is free for the first year of ownership and available at a nominal fee for subsequent years.

Coach Net's 24-Hour Customer Care

- Emergency roadside assistance, including tow vehicle
- Toll free technician hotline for operation and service support
- Toll free nationwide service appointment assistance
- Free custom trip routing and colour maps
- Warranty service at over 6,800 locations throughout North America
- Benefits such as free jump starts, tire changes, fuel delivery and lock-out service



RECREATIONAL VEHICLES

Triple E Recreational Vehicles P.O. Box 1230, Winkler, Manitoba, Canada R6W 4C4 Telephone: (204) 325-4361 Fax: (204) 325-5241

www.tripleerv.com

Triple E Recreational Vehicles meet or surpass CSA-CRVA-RVIA standards covering electrical services, gas services, plumbing services and vehicular safety. Empress Motorhomes exceed 96" in width. In some states, 96" is the maximum width of vehicles travelling some or all state roads. It is the responsibility of the owner to be familiar with the road usage laws of the states in which you travel. Product improvement is a continuing process at Triple E Recreational Vehicles. Thus, we reserve the right to change specifications on any or all products without prior notice; errors and omissions excepted. Triple E Recreational Vehicles is under no obligation to undertake modification to units manufactured prior to changes on specifications. Brochure pictures may be shown with optional equipment. Colours may not be exactly as shown due to the printing process. Please see your dealer for specific colours.

