

Fifth Avenue

Discover a New World of Fifth Wheel Living.



Fifth Avenue—Discover an Exciting New Level of

From its handsome exterior and sharp graphics to the smallest interior detail, a Fifth Avenue fifth wheel is designed and built to the highest standards under rigorous, stringent quality control. And every Fifth Avenue is loaded with the features you want—features that are expensive options on other fifth wheels.

Fifth Avenue's fully-laminated 2" sidewalls combine a smooth fiber-glass skin, block foam insulation and an aluminum framework for a wall that gives superior strength and insulating value, yet is lighter in weight. Five-inch truss rafters with $\frac{3}{8}$ " decking contribute to the Fifth Avenue's roof strength, while the one-piece, extra-tough rubber roofing provides greater protection from the weather. The one-piece $\frac{5}{8}$ " seamless aluminum-laminated structurewood floor decking is strong and avoids squeaking. Mount all of this onto the Fifth Avenue's 10" I-beam frame, and you have a vehicle of exceptional strength, durability, and safety.

As the proud owner of a new Fifth Avenue, you'll receive a full year's membership in Thor's exclusive Customer Care Program. Ask your dealer to see the Customer Care owner's guide for complete details on emergency road service and all the other exciting benefits you'll receive.



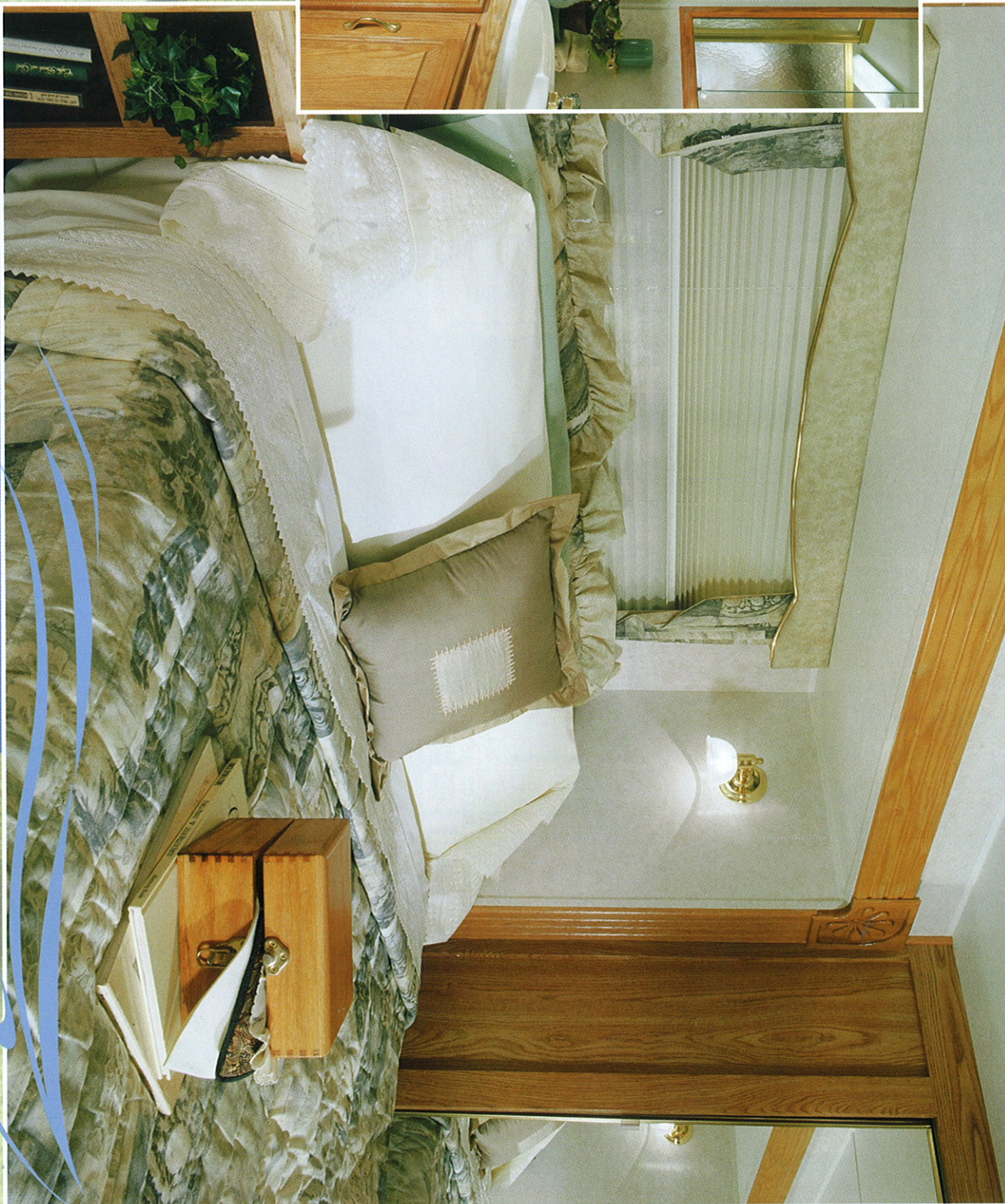
Luxury



Inside, Fifth Avenue proudly features the finest materials and a level of craftsmanship seldom seen in a recreation vehicle. Rich, solid oak cabinet doors, stylish fabrics, day/night shades and valances all work together to give Fifth Avenue a warm, home-like feeling. A Fifth Avenue is designed to be truly a home away from home. Free-standing dinettes with chairs give you greater flexibility and comfort, making the huge super-slide an even more delightful feature. Galleys are equipped with the finest appliances, including a built-in double-door refrigerator and microwave, a three-burner range with one high-intensity burner, an oven and lots of storage and counter space. Preparing meals in a Fifth Avenue should never be a chore. And every Fifth Avenue includes a large entertainment center with a stereo/cassette deck with CD player, and pre-wiring for TV antenna, cable TV service and satellite hook-up. When you travel in a Fifth Avenue you're always in touch.



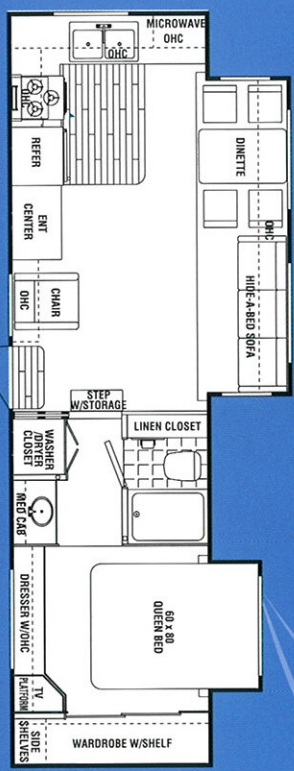
Bathrooms are spacious and outfitted with lots of storage; most can serve as convenient dressing rooms, too. And you'll especially appreciate the large mirrored medicine cabinet and full-length mirror on the door.



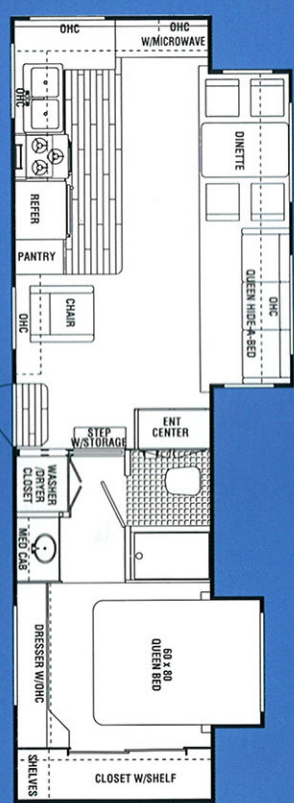
The huge bedroom wardrobe allows you to take along all the clothes you're likely to need and hang them properly, so you'll always look your best.



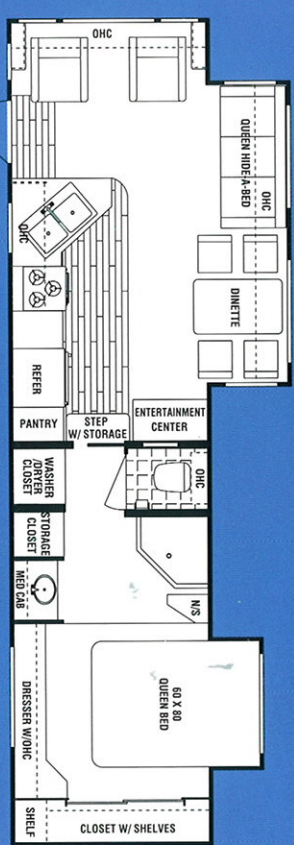
Fifth Avenue—Floorplans Designed for Gracious



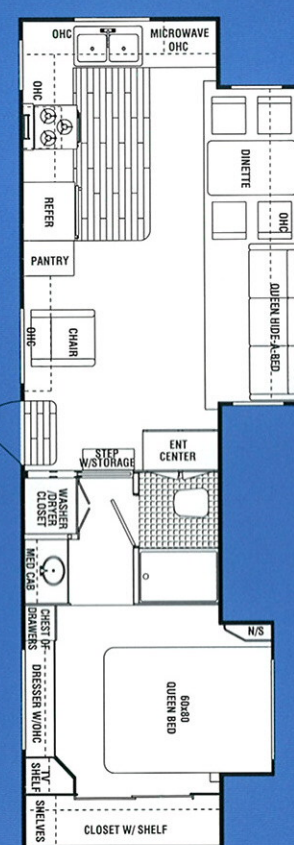
28 RK



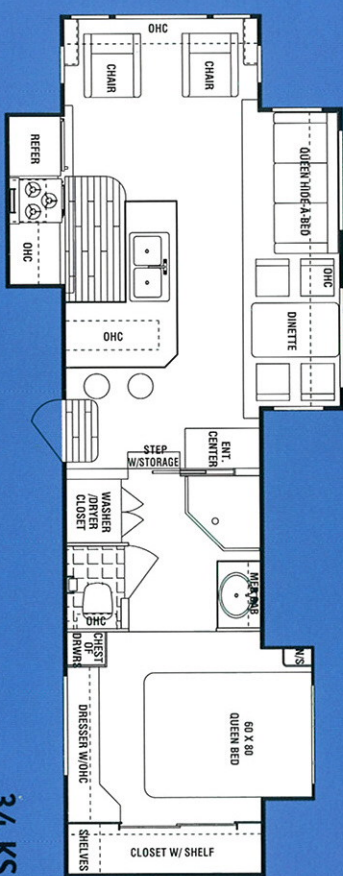
30 RK



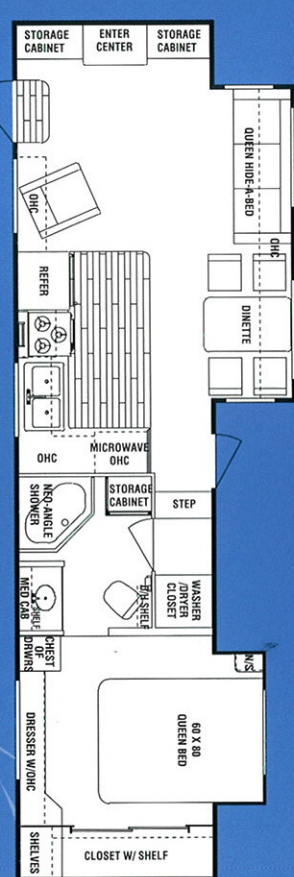
32 RL



32 RK

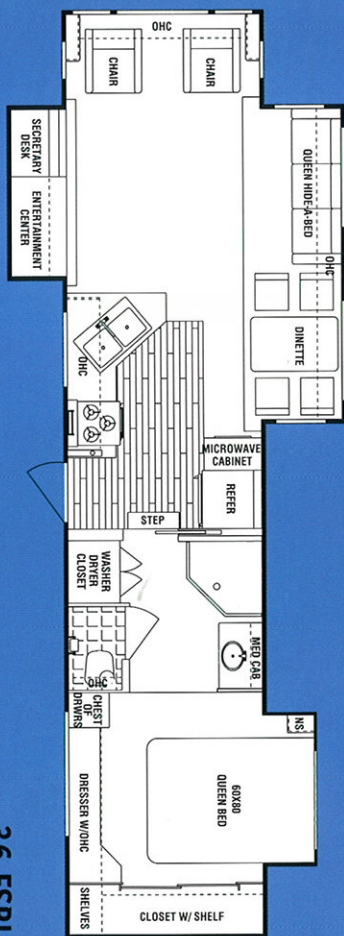
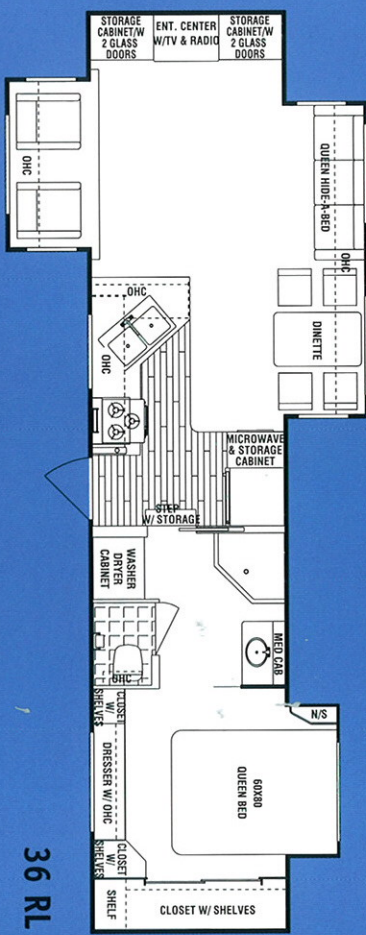
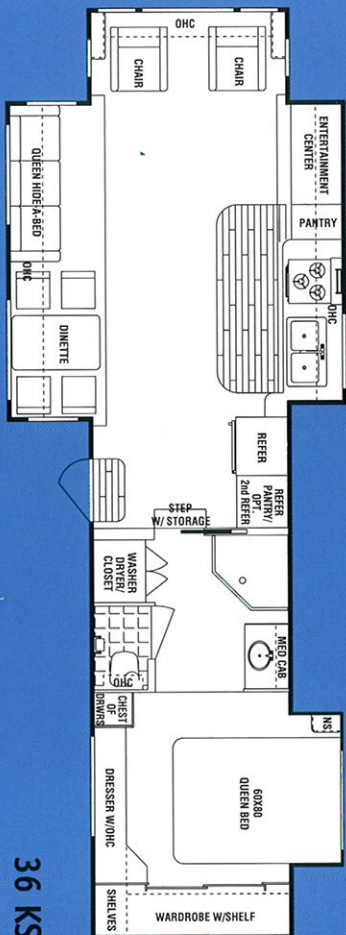


34 KS



34RLRD

Living



2000 Models	28RK	30RK	32RK	32RL	34KS	34RLRD	36ESRL	36KS	36RL
Length	30'	32'	32'	33' 6"	33' 6"	35'	35'	38'	38'
Width	8'	8'	8'	8'	8'	8'	8'	8'	8'
Hitch Dry Weight	2,184	2,038	2,032	2,190	2,728	2,236	2,474	2,646	2,420
Axle Dry Weight	7,542	8,014	8,504	8,450	8,410	8,172	9,282	9,738	9,820
GVWR	12,584	12,438	12,432	12,590	13,128	12,636	15,000	15,000	15,000
UWV	9,726	10,052	10,536	10,640	11,138	10,408	11,756	12,384	12,240
NCC	2,858	2,386	1,896	1,950	1,900	2,228	3,244	2,616	2,760
Tandem Axles	2	2	2	2	2	2	3	3	3
Radial Tire Size	16"	16"	16"	16"	16"	16"	16"	16"	16"
Tire Load Range	E	E	E	E	E	E	E	E	E
Dual Waste Water	150	150	150	150	150	150	150	150	150
Fresh Water	55	55	55	60	60	60	60	60	60
Furnace BTU's	40	40	40	40	40	40	40	40	40

Vehicle Loading—Every effort has been made to provide the greatest number of options for the recreation vehicle owner. Along with these choices comes the responsibility to manage the loads that are imposed by the choices so that they remain within the manufacturer's specified chassis weight limits. Do not overload the recreation vehicle.

Dry weights based on standard features; optional equipment not included. Net carrying capacity (NCC) determined by subtracting unloaded vehicle weight (UWV) from gross vehicle weight (GVWR) and includes fluids, options and cargo. Liquid capacities and weights are approximations only.

Warning: This information is intended as a guide only. Weights of individual vehicles may vary. Consult your owner's manual for complete loading, weighing and towing instructions. Weights include optional bedroom slide.

Fifth Avenue—Standard Features & Options You're Sure to Enjoy!

Exterior

- 30" radius entrance door
- Built-in twin 30# LP bottles w/auto changeover
- One-piece EPDM rubber roof
- Triple entry step(s)
- Flush door latch w/ dead-bolt lock
- Locking baggage doors
- Radused jalousie windows
- Outside storage compartment(s)
- Sewer hose storage
- Patio light
- Exterior light under goose-neck
- Large front storage compartment
- Battery-box compartment
- Grab-handle at entrance door
- Squeeze seal around slide-out room
- Black-water flush
- Slider windows in living room slide-outs
- Gel coat laminated sidewalls
- Front and rear fiberglass caps
- Scare lights on both sides of unit
- Detachable 30 amp power cord
- Outside shower

Construction

- Aluminum-framed fully-laminated 2" sidewall
- Block-foam insulation sidewall/floor
- 5" truss rafters with 3/4" decking full length
- Carpeted and lighted storage areas
- One piece, 5/8" seamless Weyerhaeuser structure wood floor decking
- Totally enclosed insulated underbelly
- Roof-line rain gutter w/down spouts
- Track guided electric powered Flush Floor slide-out system in living room large slide
- Laminated aluminum framed main floor and bath deck

Running Gear

- 10" I-beam frame
- Electric brakes on all wheels
- Break-away safety switch
- 5200 lb. axles on all models
- 6000 lb. front landing jacks
- Shock absorbers
- Rear stabilizer jacks
- Electric front jacks
- 16" aluminum rim tires
- Spare tire and carrier

Electrical

- Ceiling light w/wall switch
- Battery-box with positive ventilation
- Receptacles, 110-volt with ground fault interpreter
- 110-volt outlet in slide room
- 30-amp electrical service
- 55-amp converter with charger
- Patio light
- Fluorescent lighting throughout unit

Bath

- Medicine cabinet with mirror door
- Power roof vent
- Shower/tub surround w/glass door
- Thetford toilet
- Towel bar, toothbrush holder and toilet tissue holder
- Full-length mirror on bath door
- Towel rack on interior bath door
- Skylight above shower/tub

Appliances/Equipment

- Microwave
- 3-burner range w/one high-output burner
- 6-gal. gas/electric water heater w/DSI
- Sink cover
- Demand water pump
- 15,000 BTU ducted A/C
- Water heater bypass
- Stereo/cassette 3-CD player w/remote

Appliances/Equipment

- DSS prep for satellite hook-up
- Mini-vac
- Blow dryer in bathroom
- Paper towel holder
- Trash can
- TV antenna with booster
- Cable TV hook-up
- Second TV outlet in bedroom
- Awning
- Roof rack and ladder
- Extra large refer
- Double bowl fiberglass/acrylic kitchen sink
- 40,000 btu furnace
- Combination range hood, fan, light, and monitor panel (most models)

Interior

- Roof vents
- Fire extinguisher
- Smoke detector
- Oak edged countertops
- Solid oak cabinet doors
- Vinyl plank floor in kitchen and entry
- Adjustable ceiling A/C ducts
- Interior oak grab handle at entrance door
- (N/A 36RL & 36FSRL)
- Innerspring mattress
- Bedspread w/shams
- Sofa hide-a-bed
- Free-standing cinnette w/4 chairs
- Decorative interior vinyl-covered wallboard
- Day/night shades
- Swivel rocker
- Baltic birch solid-wood drawer sides
- Bed lifters
- Designer valances
- Decorative galley rail
- Pantry (most models)
- Ceiling Fan
- 60 x 80 queen bed slide-out
- 67" living room slide out height

Interior

- Overhead glass cabinets in large living room slide-out
- Phone jack
- Stove cover
- Raised oak refer front

Options Available

- Leather touch rocker recliner
- Ice maker (n/a 34KS, 36KS)
- 25" color TV
- 13" color TV
- 2nd A/C in bedroom (not ducted)
- Duo Pane windows
- Hide-a-bed sofa with footrest and drink tray
- Tub (28, 30, 32RK's)
- Rocker/recliner/glider
- Booth dinette w/storage
- Washer dryer prep, 10-gal. gas/electric water heater, 50-amp service
- 10-gal. gas/electric water heater
- Hardwood slide out fascia in bedroom
- Central vacuum with accessories
- Fantastic fan with rain sensor and wall thermostat
- Poly air insulation (roof only)
- Slide-out gas bottle tray
- Slide-out awning toppers
- Battery
- Outside handicap grab handle
- Space-saver coffee maker
- Porcelain toilet w/sprayer
- Reese 15K Trail Boss swivel hitch

Product information, specifications, and photography in this brochure were as accurate as possible at time of printing. Photographs may contain some features that are optional on your vehicle. Since we continually strive to improve our products, actual products may differ. Prices and specifications are subject to change without notice. All capacities are approximate and dimensions are nominal. Some features or options may be different or unavailable in Canada.

Thor's Exclusive Full 2-Year Standard Warranty

2-year "hitch-to-bumper" coverage to protect your RV investment.



This brochure is printed on recycled paper as part of Thor's corporate effort to minimize waste and conserve our natural resources. Providing safe, fuel-efficient recreational vehicles is Thor's way of further demonstrating our role as the industry leader in safeguarding our nation's environment.



THOR
AMERICA'S BEST RV VALUE

305 Steury Ave. • Goshen, IN 46528
219.534.1224 • Fax 219.533.3807

Your Local Dealer