



EMPRESS

2002



EMPRESS 2002

This is where the journey begins



IN A CLASS OF ITS OWN





THE BEST WAY TO CELEBRATE LIFE IS TO LIVE IT.

LIVE TO THE FULLEST WITH THE TRIPLE E 2002

EMPRESS. JOURNEY FROM COAST TO COAST AND

SEE EVERYTHING IN BETWEEN. TAKE SNAPSHOTS

OF THE FACES AND PLACES YOU ENCOUNTER.

YOU'VE NEVER KNOWN FREEDOM SO COMPLETE.



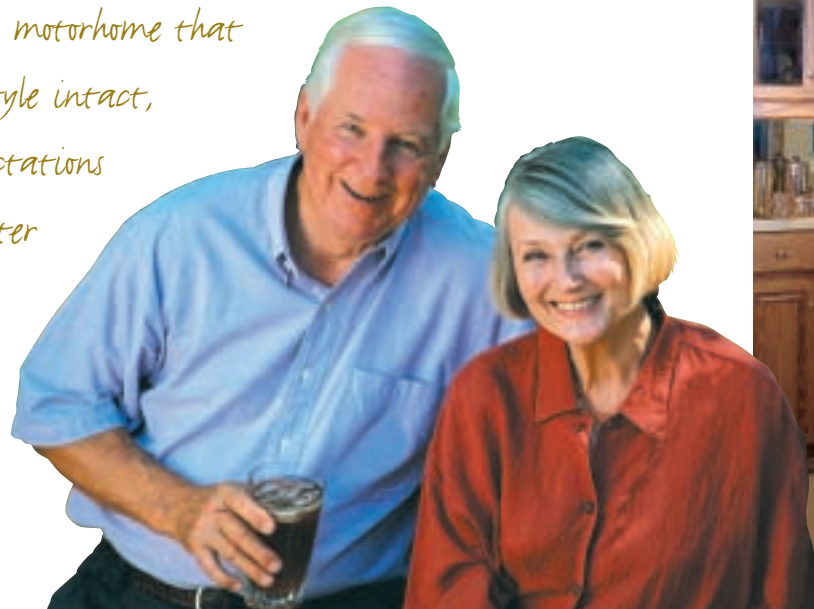
THE SPACE YOU NEED



Commanding elegance and prestige inside and out, the Empress was developed with every luxury in mind. Thirty eight feet and equipped with all the features, options, and amenities you could wish for, the glorious Empress is as complete as it is beautiful. The Empress has been designed to be the best motorhome on the road, bar none!

This impressive and formidable coach turns heads on and off the road, its lavish interior enhanced in every possible way to make you feel right at home. Uncompromising attention to detail and elegant style put the Empress in a class of its own.

"We've been hoping to find a motorhome that allows us to keep our living style intact, the Empress exceeds our expectations and opened our eyes to a better brand of motorhome living."



THE LOOK YOU WANT

TAKE YOUR CHOICE OF SEVEN FLOOR PLANS AND A HOST OF OPTIONS. YOU CAN CHOOSE ONE OF THREE DISTINCT INTERIOR DESIGN SCHEMES, EACH WITH A COMPLEMENTING EXTERIOR PAINT TREATMENT. SELECTED BY A GROUP OF PROFESSIONALS, THE COMBINATIONS SKILLFULLY COORDINATE UPHOLSTERY, CARPETING, AND WINDOW TREATMENTS.



CHERRY NUTMEG



CANADIAN MAPLE



FERN GROVE



LAGUNA MIST



OYSTER





Bring technology onboard. Consider the optional sliding computer tray.

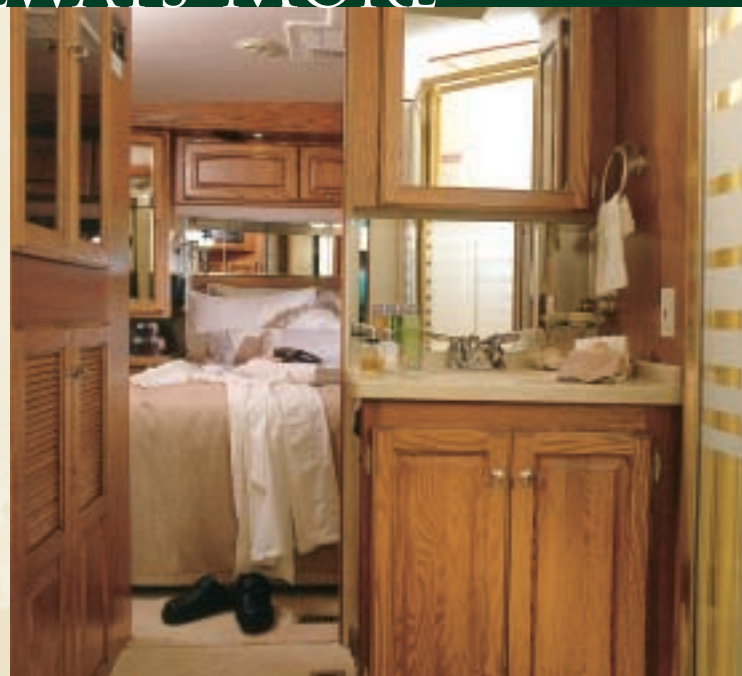


For added convenience and safety, you'll appreciate the driver side entry/exit door.



Long road trips require all the amenities, even an optional compact washer/dryer.

ALWAYS MORE



Immerse yourself in grand style. The full service kitchen has beautiful Solid Surface countertops and a chrome telescoping faucet to name a few of the luxurious touches. The five star sleeping quarters feature wood framed full length

mirrored closet doors. The large bath area has top quality fixtures and a neo-angle shower or garden tub. It's a certainty you'll never go back once you've experienced the Empress. The thoughtful and elegant features are everywhere to create the atmosphere you want. The focus is absolute comfort, the result is absolute satisfaction.



SPACE SOLUTIONS

Features like the new contoured automotive style dashboard to the Ultra-leather swivel Captain's chairs attest to the commitment to quality. The new leather-wrapped V.I.P. steering wheel controls lights and wipers for even greater convenience



Optional three drawer storage compartment.

When you're traveling in style such as this, you'll be away from your home base for extended periods. The Empress is ready with extra storage capacity so you can bring and/or buy whatever you wish. The baggage doors are powered by gas struts for easy accessibility. The generator compartment is located at the front of the Empress in an air-powered slideout. Batteries are on a slideout tray as well for safety and convenience.

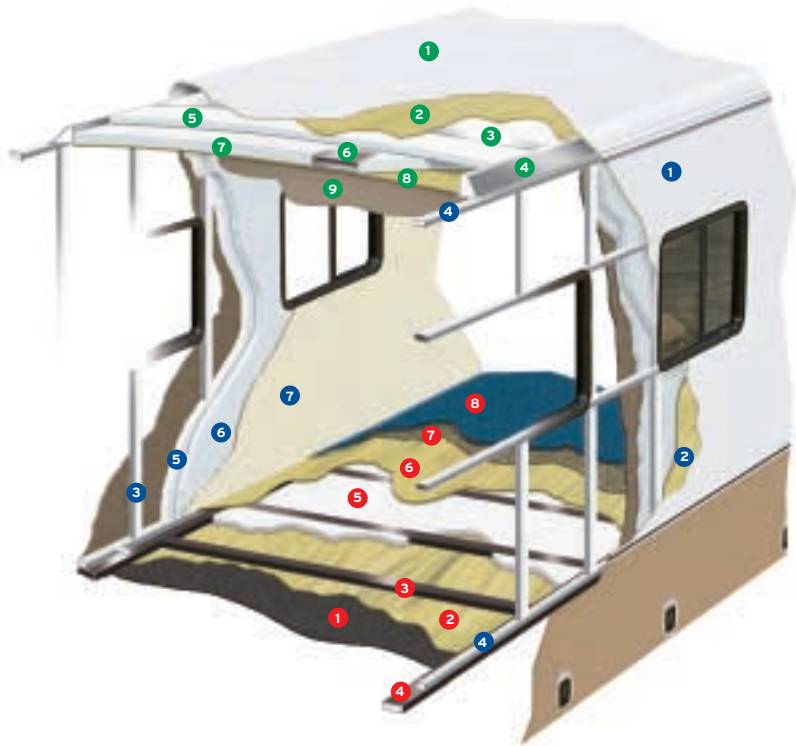
Interior storage has been carefully considered as well. A slide-out panel at the entry steps saves space, and there is even hidden storage under the optional Ultra-leather sofa.



The entry steps are hidden with a slide-out panel to add valuable square footage.

CONSTRUCTION

The major considerations in building a top quality motorhome are long lasting beauty coupled with the ability to stand up to any weather conditions. The coach is an aluminium and steel framed structure with vacuum bonded gelcoat fiberglass side walls and a domed roof finished with a seamless EPDM membrane.



Floor (Exterior to Interior)

1. One Piece Woven Poly Propylene Underbelly
2. 3/8" Plywood
3. Tubular Steel Framing (Welded)
4. Styrofoam Filled Wall Support Plates
5. 1" Block Styrofoam Insulation
6. 1/2" Plywood
7. Carpet Underlay
8. Carpeting (Floor covering)

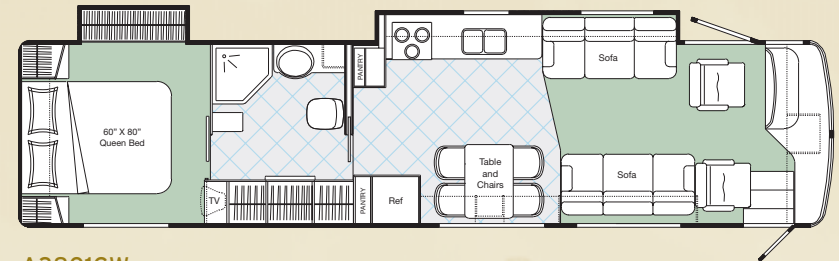
Sidewalls (Exterior to Interior)

1. Seamless Fiberglass Exterior
2. Luaun Structural Backer
3. Aluminium Framing (Welded)
4. Styrofoam Filled Floor and Roof Plate
5. 1" Block Styrofoam Insulation
6. 1/2" Styrofoam Thermal Break Insulation
7. Interior Decorative Luaun Wall Panels

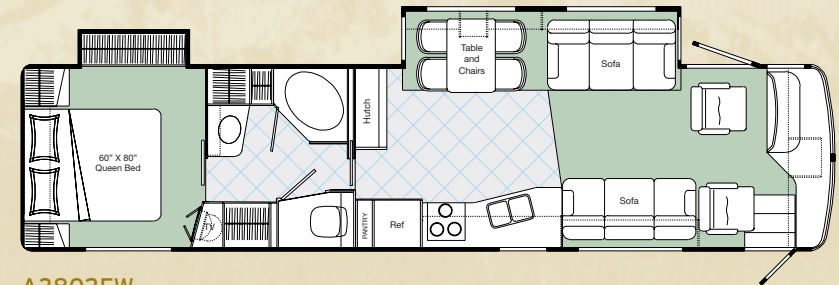
Roof (Exterior to Interior)

1. One Piece EPDM Roofing
2. Luaun Backer
3. Aluminium Roof Truss
4. Styrofoam Filled Roof Truss Supports
5. 1 1/2" Block Styrofoam Insulation
6. Enclosed/Insulated Climate Control Ducting
7. 2" Block Styrofoam Thermal Break Insulation
8. 3/8" Plywood
9. One Piece Headliner

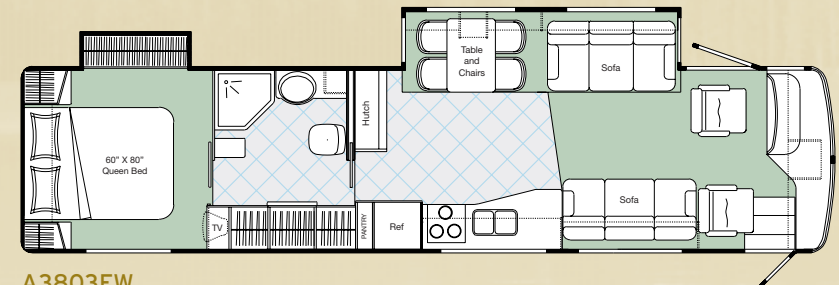
FLOORPLANS



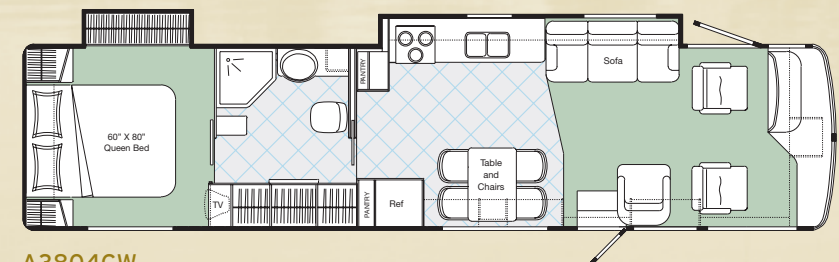
A3801GW



A3802FW

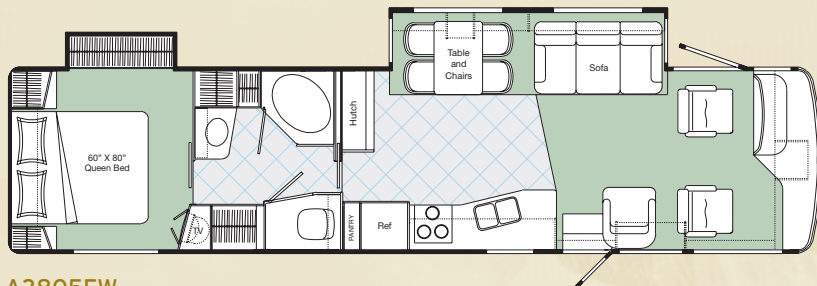


A3803FW

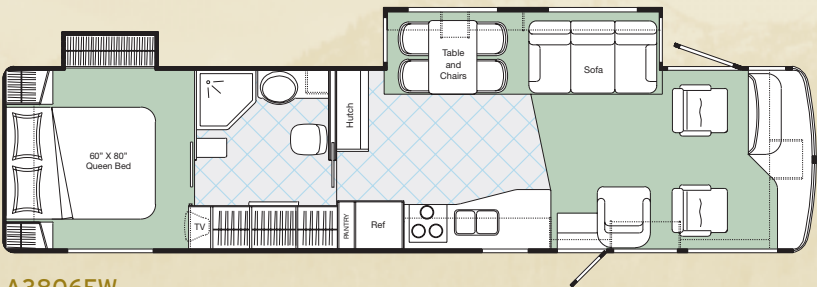


A3804GW

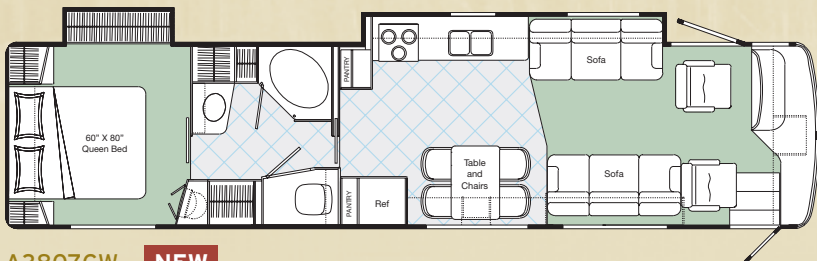
SPECIFICATIONS



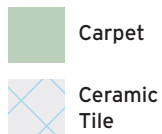
A3805FW



A3806FW



A3807GW **NEW**



	A3801GW	A3802FW	A3803FW	A3804GW
GVWR-LBS(KG)	29410(13338)	29410(13338)	29410(13338)	29410(13338)
UVW-LBS(KG)	24021(10894)	24167(10960)	24571(11143)	23949(10861)
NCC-LBS(KG)	5389(2444)	5243(2378)	4839(2195)	5461(2477)
WHEELBASE-IN(mm)	242"(6147)	242"(6147)	242"(6147)	242"(6147)
LENGTH-FT(mm)	38'(11582)	38'(11582)	38'(11582)	38'(11582)
WIDTH-FT(mm)	8'4"(2534)	8'4"(2534)	8'4"(2534)	8'4"(2534)
HEIGHT Incl.A/C-FT(mm)	12'(3657)	12'(3657)	12'(3657)	12'(3657)
**WATER TANK CAP.-GAL(L)	102(386)	102(386)	102(386)	102(386)
HOLDING TANK CAP. GREY.-GAL(L)	57(216)	57(216)	57(216)	57(216)
HOLDING TANK CAP. BLACK-GAL(L)	57(216)	57(216)	57(216)	57(216)
FUEL CAP.-GAL(L)	100(379)	100(379)	100(379)	100(379)
PROPANE CAP.-GAL(L)	32(121)	32(121)	32(121)	32(121)
	A3805FW	A3806FW	A3807GW	
GVWR-LBS(KG)	29410(13338)	29410(13338)	29410(13338)	
UVW-LBS(KG)	24095(10927)	24499(11111)	24425(11077)	
NCC-LBS(KG)	5315(2411)	4911(2227)	4985(2261)	
WHEELBASE-IN(mm)	242"(6147)	242"(6147)	242"(6147)	
LENGTH-FT(mm)	38'(11582)	38'(11582)	38'(11582)	
WIDTH-FT(mm)	8'4"(2534)	8'4"(2534)	8'4"(2534)	
HEIGHT Incl.A/C-FT(mm)	12'(3657)	12'(3657)	12'(3657)	
**WATER TANK CAP.-GAL(L)	102(386)	102(386)	102(386)	
HOLDING TANK CAP. GREY.-GAL(L)	57(216)	57(216)	57(216)	
HOLDING TANK CAP. BLACK-GAL(L)	57(216)	57(216)	57(216)	
FUEL CAP.-GAL(L)	100(379)	100(379)	100(379)	
PROPANE CAP.-GAL(L)	32(121)	32(121)	32(121)	
CHASSIS	FREIGHTLINER XC-23RDX on all models			
TRANSMISSION	ALLISON 3000MH			
ENGINE	CAT 330HP Turbo Diesel on all models			
**-Includes 10gal Water Heater (all capacities in US gallons)				

GVWR

GROSS VEHICLE WEIGHT RATING means the maximum permissible weight of this motorhome. The GVWR is equal to or greater than the sum of the unloaded vehicle weight (UVW) plus the net carrying capacity (NCC).

UVW

UNLOADED VEHICLE WEIGHT means the weight of the motorhome as built at the factory with full fuel, engine oil, and coolants. The UVW does not include cargo, fresh water, LP gas, occupants, factory or dealer installed accessories.

NCC

NET CARRYING CAPACITY means the maximum weight of all occupants, including the driver, personal belongings, food, fresh water, LP gas, tools, tongue weight of towed vehicle, factory and dealer installed accessories, etc., that can be carried by this motorhome. (NCC is equal to or less than GVWR minus UVW.)

NOTE: Please see your dealer for weights of factory installed options.

STANDARDS AND OPTIONS

S = Standard O = Option 🍁 New for 2002

	A3801GW	A3802FW	A3803FW	A3804GW	A3805FW	A3806FW	A3807GW
VEHICULAR							
Air Brakes c/w Slack Adjusters	S	S	S	S	S	S	S
Air Horns	S	S	S	S	S	S	S
Air Suspension c/w Bilstein Shock Absorbers	S	S	S	S	S	S	S
Allison 3000 MH Six Speed Automatic Transmission c/w Lock Up	S	S	S	S	S	S	S
Alternator 160 Amp	S	S	S	S	S	S	S
Aluminum Wheels	S	S	S	S	S	S	S
Automatic HWH Leveling System c/w Auto Air Dump	S	S	S	S	S	S	S
Automotive Undercoating	S	S	S	S	S	S	S
Battery Boost Switch (Coach to Chassis Batteries)	S	S	S	S	S	S	S
Battery Selector Switch for Radio	S	S	S	S	S	S	S
Block Heater (1000 W)	S	S	S	S	S	S	S
Chassis - Freightliner c/w Caterpillar 330 HP Turbo Diesel (XC Series) Raised Rail - GVWR 29,410 lbs	S	S	S	S	S	S	S
Chassis Air Conditioner	S	S	S	S	S	S	S
Cockpit Ventilating Fans	S	S	S	S	S	S	S
Cruise Control	S	S	S	S	S	S	S
Dash Mounted Directional Compass with Exterior Temperature Readout 🍁	S	S	S	S	S	S	S
Driver Door c/w Power Window	S	S	S	S	S	S	S
Driver/Passenger Floor mats	S	S	S	S	S	S	S
Exhaust Brake	S	S	S	S	S	S	S
Halogen Automotive Driving Lights	S	S	S	S	S	S	S
Halogen Styled Headlights	S	S	S	S	S	S	S
Heated Remote Power Mirrors	S	S	S	S	S	S	S
High Mount Stoplight - LED Long Life	S	S	S	S	S	S	S
Independent Front Suspension Upgrade (Increases GVWR to 31,000 lbs and Includes 275/80R22.5XRV Michelin Tires) 🍁	O	O	O	O	O	O	O
Integrated Fiberglass Bumpers - Steel Reinforced	S	S	S	S	S	S	S
Radial Tires - Michelin 255/80R22.5XRV	S	S	S	S	S	S	S
Rust Protection	O	O	O	O	O	O	O
Trailer Hitch Receiver w/ wiring and plug - Class III	S	S	S	S	S	S	S
Transmission Cooler (Freightliner Supplied)	S	S	S	S	S	S	S
VIP Steering Wheel with Leather Cover, Wiper and Washer Controls, Tilt/Telescopic 🍁	S	S	S	S	S	S	S
Wet Arm Windshield Wipers c/w Intermittent Function	S	S	S	S	S	S	S
CONSTRUCTION							
Aluminum Baggage Doors c/w Gas Struts and Slam Latches	S	S	S	S	S	S	S
Domed EPDM Roof	S	S	S	S	S	S	S
Fiberglass Molded Front & Rear Masks	S	S	S	S	S	S	S
Lined and Lighted Baggage Compartments	S	S	S	S	S	S	S
Steel Cab Floor, Firewall and Dash Structure	S	S	S	S	S	S	S
Thermal Break Window System with "Low E" 🍁	S	S	S	S	S	S	S
Vacuum Bonded Aluminum Framed Insulated Sidewall & Roof Construction	S	S	S	S	S	S	S
Vacuum Bonded Gelcoat Fiberglass Sidewalls	S	S	S	S	S	S	S
Vacuum Bonded Steel Framed Insulated Floor Construction	S	S	S	S	S	S	S

	A3801GW	A3802FW	A3803FW	A3804GW	A3805FW	A3806FW	A3807GW
COACH EXTERIOR							
Concealed Locking Fuel Fill Access On Both Sides	S	S	S	S	S	S	S
Dead Bolt Door Lock	S	S	S	S	S	S	S
Deluxe Patio Lights (2)	S	S	S	S	S	S	S
Docking Lamps (2 Side, 2 Rear)	S	S	S	S	S	S	S
Electric Retractable Entry Step (S - Single Step, D- Double Step)	S	S	S	D	D	D	S
Entry & Driver Door Assist Handles (Interior Mounted)	S	S	S	S	S	S	S
Exterior Ladder c/w Detachable Lower Section	O	O	O	O	O	O	O
Exterior Shower	S	S	S	S	S	S	S
Full Body Exterior Paint with Clear Coat	O	O	O	O	O	O	O
Painted Exterior Graphics	S	S	S	S	S	S	S
Screened Entry Door	S	S	S	S	S	S	S
COACH INTERIOR							
Automotive "Soft Touch" Headliner	S	S	S	S	S	S	S
"Canadian Maple" Cabinetry with Maple Fridge Inserts	O	O	O	O	O	O	O
Courtesy Floor Lamps	S	S	S	S	S	S	S
Dash Mounted Computer Tray	O	O	O	O	O	O	O
Day/Night Pleated Shades c/w Bedroom Blackout	S	S	S	S	S	S	S
Decorative Bedspread c/w Throw Pillows	S	S	S	S	S	S	S
Decorative Mirrors	S	S	S	S	S	S	S
Domed Interior Ceiling	S	S	S	S	S	S	S
Dual Roller Glide Drawers c/w Travel Locks	S	S	S	S	S	S	S
Easy Under bed Storage/Engine Access c/w Gas Struts	S	S	S	S	S	S	S
Insulated Vent Covers	O	O	O	O	O	O	O
Keylock Safebox	S	S	S	S	S	S	S
Pneumatic Powered Front Step Cover	S	S	S	-	-	-	S
Power Driver's Sun Visor	O	O	O	O	O	O	O
Sculptured Solid Oak Panel Cabinet Doors	S	S	S	S	S	S	S
Side Driver & Passenger Roller Blinds	S	S	S	S	S	S	S
Skylight in Living Area	O	O	O	O	O	O	O
Slide Out Drawer Option in Washer/Dryer Cabinet (N/A with Washer/Dryer Option)	O	O	O	O	O	O	O
Southco Snap locks on all Cabinet Doors 🍁	S	S	S	S	S	S	S
Wardrobe slide out in Bedroom (6 Drawers, 3 Shirt Closets) 🍁	S	S	S	S	S	S	S
FURNITURE							
Booth Dinette With Slide Out Drawers 🍁	O	O	O	O	O	O	O
Cloth Easy Bed on Drivers Side	S	S	S	S	S	S	S
Cloth Hide-A-Bed on Drivers Side (must be ordered with Ultra Leather Recliner Option on Passengers Side)	-	O	O	-	O	O	-
Flexsteel Versaflex lounge on driver's side (N/A with Mobile Theater Option) 🍁	-	O	O	-	O	O	-
Magic Bed on Driver's Side 🍁	O	-	-	O	-	-	O
Mattress - Residential Quality Queen Bed (60" x 80")	S	S	S	S	S	S	S
Mattress Upgrade	O	O	O	O	O	O	O

	A3801GW	A3802FW	A3803FW	A3804GW	A3805FW	A3806FW	A3807GW
Oak Wall Mount Table & Chairs	S	-	-	S	-	-	S
Solid Surface Table c/w Oak Chairs	-	S	S	-	S	S	-
Ultra Leather Cocktail Chair with Refreshment Center c/w flip table on Passenger Side (forward of entrance door)	-	-	-	S	S	S	-
Ultra Leather Easy Bed Passenger Side	S	S	S	-	-	-	S
Ultra Leather Recliner in Lieu of Ultra Leather Cocktail Chair	-	-	-	O	O	O	-
Ultra Leather Recliner with Refreshment Center c/w Flip Table In Lieu of Ultra Leather Easy Bed on Passenger Side	O	O	O	-	-	-	O
Ultra Leather Swivel Power Drivers & Passengers							
Captain Chairs with Integral Seat Belts	S	S	S	S	S	S	S
GALLEY FEATURES							
Ceramic Tile Flooring	S	S	S	S	S	S	S
Coffee Maker	S	S	S	S	S	S	S
Deluxe Faucets	S	S	S	S	S	S	S
Gas Oven	O	O	O	O	O	O	O
Microwave/Convection Oven c/w Range Hood (OTR)	S	S	S	S	S	S	S
Recessed Bi-fold Range Cover	S	S	S	S	S	S	S
Recessed Cooktop c/w High Output Burner (Sealed Burners)	S	S	S	S	S	S	S
Recessed Solid Surface Sink	S	S	S	S	S	S	S
Sculptured Oak Panel Fridge Inserts	S	S	S	S	S	S	S
Side by Side 12 cu. Ft. Refrigerator c/w Ice Maker, Gas/Electric	O	O	O	O	O	O	O
Solid Surface Countertop c/w Matching Cutting Board Sink Covers	S	S	S	S	S	S	S
Two Door Fridge c/w Ice Maker, Gas/Electric (10 cu. Ft.)	S	S	S	S	S	S	S
Thermostatically Controlled Fan (In Living Area)	S	S	S	S	S	S	S
Water Purifier	S	S	S	S	S	S	S
LAVATORY FEATURES							
Aurora China Toilet c/w Water Saver With Sprayer	S	S	S	S	S	S	S
Ceramic Tile Flooring	S	S	S	S	S	S	S
Deluxe Faucets	S	S	S	S	S	S	S
Enclosed Fiberglass Shower (S) or Garden Tub (G)	S	G	S	S	G	S	S
Prep. Package for Washer/Dryer	S	S	S	S	S	S	S
Skylight - Shower Compartment	S	S	S	S	S	S	S
Solid Surface Countertop	S	S	S	S	S	S	S
Thermostatically Controlled Fan	S	S	S	S	S	S	S
ENTERTAINMENT							
AC 20" Color Stereo TV c/w Remote	S	S	S	S	S	S	S
AM/FM CD in Dash Stereo	S	S	S	S	S	S	S
Bedroom Color TV c/w Remote (AC/DC)	S	S	S	S	S	S	S
CB Antenna	O	O	O	O	O	O	O
DHS Mobile Theater System with Premium AM/FM CD Stereo with 8 Stack CD Changer	O	O	O	O	O	O	O
Exterior 20" AC - TV in Baggage Compartment c/w Slide-out Tray	O	O	O	O	O	O	O
Exterior AM/FM - CD Stereo	O	O	O	O	O	O	O
Exterior Telephone & Cable TV Hookup	S	S	S	S	S	S	S

	A3801GW	A3802FW	A3803FW	A3804GW	A3805FW	A3806FW	A3807GW
Premium AM/FM Cassette Stereo with 8 Stack CD Changer	O	O	O	O	O	O	O
Premium AM/FM CD Stereo c/w 8 Stack CD Changer & Amplifier	O	O	O	O	O	O	O
Satellite Dish Prewire (with 12V Power)	O	O	O	O	O	O	O
Separate AM/FM CD Stereo in Bedroom c/w Alarm	S	S	S	S	S	S	S
TV Antenna c/w Booster and "Antenna Up" light on Dash	S	S	S	S	S	S	S
Video Cassette Recorder	S	S	S	S	S	S	S
Video System Master Control	S	S	S	S	S	S	S
SYSTEMS							
110V/12V Receptacles in Baggage Compartment (Freezer Prep)	S	S	S	S	S	S	S
2000 Watt Inverter c/w 100 Amp Charger (Power to TV, VCR, Dinette Plug, Lavatory Plug, Coffee Maker, Computer Tray and Microwave)	S	S	S	S	S	S	S
3-Way Water Pump Switching	S	S	S	S	S	S	S
40,000 BTU Furnace c/w Electronic Ignition	S	S	S	S	S	S	S
4x 6V Deep Cycle Auxiliary Battery c/w Slide Out Battery Tray	S	S	S	S	S	S	S
50 Amp Electrical Service c/w Energy Management System	S	S	S	S	S	S	S
Alarm System c/w 2 Motion Detectors	O	O	O	O	O	O	O
Bi Directional Isolator Relay Delay (BIRD)							
Battery Charging System	S	S	S	S	S	S	S
Black Tank Flush System	S	S	S	S	S	S	S
Central Vacuum With Outlet in Baggage Compartment	S	S	S	S	S	S	S
Color Rearview Camera/Monitor mounted in Dash	S	S	S	S	S	S	S
Dry Chemical Fire Extinguisher	S	S	S	S	S	S	S
Dual Ducted 13,500 BTU Roof Air Conditioners(2)	S	S	S	S	S	S	S
Dual Rear Auxiliary Automotive Heaters c/w Electric Valve	S	S	S	S	S	S	S
Easy Access Propane Tank	S	S	S	S	S	S	S
Electronic Battery Disconnect (Coach Batteries)	S	S	S	S	S	S	S
Electronic Ignition Gas/Electric/Motoraid Water Heater (10 Gal)	S	S	S	S	S	S	S
Electronic Smoke, LP and CO Detectors	S	S	S	S	S	S	S
Enclosed, Insulated and Dual Heated Fresh Water & Holding Tanks	S	S	S	S	S	S	S
Full Height Utility Module Access Door	S	S	S	S	S	S	S
Generator 7.5 KW Onan Quiet Diesel With air assist Slide out	O	O	O	O	O	O	O
Generator Ready	S	S	S	S	S	S	S
Gravity Fill Fresh Water Tank	S	S	S	S	S	S	S
Slide Out Freezer 1.38 Cu Ft (AC/DC)	O	O	O	O	O	O	O
Solar Panel Prewire	O	O	O	O	O	O	O
Swing out underbody sewer hose holder	S	S	S	S	S	S	S
Washer/Dryer (vented)	O	O	O	O	O	O	O
Winterization System c/w Potable Antifreeze Pick Up Tank	S	S	S	S	S	S	S
Factory P.D.I.	O	O	O	O	O	O	O

Product improvement is a continuing process at Triple E Recreational Vehicles. Thus we reserve the right to change specifications on any or all products without prior notice; errors and omissions excepted. Triple E Recreational Vehicles is under no obligation to undertake modification to units manufactured prior to changes on specifications.

TRIPLE E QUALITY

A Triple E Empress motorhome is a combination of first-class materials and quality controlled construction.

Built with a solid foundation, integrity is never compromised – inside and out.

Exteriors are virtually maintenance free and abrasion resistant. The domed roof allows for quick water run-off and an EPDM membrane both serves to protect against leaks and contributes to energy-efficiency.

Cabinetry is constructed with screws rather than staples to ensure structural integrity and durability. Both strong and moisture repellent, the solid oak doors are a front to ample storage space.

Designer interior decors are a mixture of style and functionality – with quality fabrics developed to handle years of wear while meeting or exceeding flame retardant standards.

All Triple E products are built to CSA (Canadian Standards Association) or RVIA (Recreational Vehicle Industry Association) Standards. Triple E was one of the first RV manufacturers to obtain the ISO 9002 certification – your assurance of the careful construction and high quality materials that are part and parcel of every Triple E Recreational Vehicle.



MAKE SURE YOU VISIT OUR WEBSITE AT www.tripleerv.com

Triple E is proud to offer a

2 YEAR LIMITED WARRANTY

on structure as well as most major components.

Please see your dealer for further details.



This combination of labels assures the purchaser that the manufacturer has met or surpassed CSA-CRVA-RVIA standards covering electrical services, gas services, plumbing services, and vehicular safety.

Empress motorhomes exceed 96 inches in width. In some states 96 inches is the maximum width of vehicles travelling some or all state roads. It is the responsibility of the owner to be familiar with the road usage laws of the states in which you travel.

COACH NET

Triple E is a proud partner of Coach Net, an extensive support program that provides complete and fully paid roadside assistance, emergency road service, and special warranty support benefits that follow you throughout Canada and the US. Service is free for the first year of ownership and is available at a nominal fee for subsequent years.

Coach Net's 24-hour Customer Care includes:

- Emergency roadside assistance including tow vehicle
- Toll free technician hotline for operation and service support
- Toll free nationwide service appointment assistance
- Free custom trip routing and color maps
- Warranty service at over 6,800 locations throughout North America
- Benefits such as free jump starts, tire changes, fuel delivery, and lock out service

Brochure pictures may be shown with optional equipment.



P.O. Box 1230, Winkler, MB
Canada R6W 4C4
Tel: (204) 325-4361
Fax: (204) 325-5241
www.tripleerv.com

Experience the Difference