

Standard Features & Options

Exterior

- Steel Loops on Chassis for Outside Security Lock
- Dual Battery Tray
- Front Cargo/Generator Rack
- Oversized Exterior Storage Compartments
- Cargo Ramp Loading Lights
- Rear Security/Work Lights
- Black Trim Windows w/Tinted Safety Glass
- Diamond Plate Rock Guard
- Radius Entry Door
- Triple Entry Steps
- Keyed Ramp Door Latches
- 2" Quick Release Dump Valve on Fresh Water Tank
- Fiberglass Skin Upgrade (2500, 2600, 2900)

Garage

- 7' Insulated Bottom Hinged Spring Assisted Ramp Door
- Tuff-Ply Gas/Oil Resistant Dovetail Flooring
- Metal Ram Air Vents
- Fuel Station w/12V Pump, 30 GAL Fuel Tank & Static Line
- 2,500 LB Tie Down Rings
- Dovetail Rear Entry
- Flat Floor Design – No Wheel Wells

Options

- Onan® 4.0 KW Generator w/Start/Stop Switch, Hour Meter & Fuel Gauge
- 15,000 BTU AC Upgrade
- Fiberglass Skin Upgrade (1905 & 2100)
- Rubicon Logo Chair
- 2 Rubicon Logo Chairs IPO Sit-n-Sleep Dinette (2600)

Equipment

- Heavy-Duty Axles
- (4) 12" Electric Brakes
- Electric Power Awning w/Adjustable Legs
- Radial Tires
- 6 GAL LP/Electric Water Heater w/DSI
- 30 AMP Service w/Power Cord
- 55 AMP Converter
- Black Tank Flush
- Forced Air Furnace
- Dual 7.5 GAL (30 LB each) LP Tanks w/Cover
- Front & Rear Stabilizer Jacks
- Rear Screen Wall
- Aluminum Wheels (16" – 2900)
- Spare Tire w/Carrier (16" – 2900)
- Electric Bed Lift w/Top Bed, Flip Up Bottom Sofa Sleeper & Ladder (N/A 1905 & 2100)

Construction

- 102" Wide Body
- I-Beam Chassis (8" – 1905, 2100, 2600) (10" – 2900)
- Steel Reinforced Garage Floor
- 7/8" One-Piece Floor Decking (main floor)
- 5" Trussed Roof
- Fiberglass Insulation in Roof, Floor & Walls
- 1" Thick Insulated Baggage Doors
- Heated & Enclosed Water Tanks
- Rubicon Central Command Center
- 12V Disconnect Switch
- 6 CU FT LP/Electric Refrigerator w/Black Front Panel (1905)
- 8 CU FT Refrigerator Upgrade (N/A 1905)
- 3-Burner Range
- Fantastic Fan in Kitchen
- Microwave/Convection Oven
- Bottle Opener in Kitchen
- Kitchen Sink Cover
- Hardwood Cabinet Doors
- Residential Cabinet Hardware
- Overhead Cargo Netting
- Laundry Chute in Bedroom (N/A 1905 & 2500)
- Custom Rubicon Foldaway Furniture
- Foot Flush Toilet
- Puck Lighting above Cabinets
- Metal Drawer Guides
- Hard Lambrequin Window Treatments
- Multiple Cable TV Connections
- Directional Digital TV Antenna
- Metal Blinds
- Shower/Tub Surround
- Skylight over Shower/Tub
- Power Bathroom Exhaust Fan
- Mirrored Medicine Cabinet
- Oversized Tinted Safety Glass Windows
- Up to 17' of Cargo Space

Interior

- Jensen Stereo w/AM/FM/CD/DVD/Player w/AUX, 4 Interior Speakers, 2 Exterior Marine Speakers
- Speaker Upgrade w/Powered Subwoofer (N/A 1905)
- 13,500 BTU Ducted AC (1905 non-ducted)
- LCD HDTV w/Outside Entertainment Bracket (19" – 1905, 2100) (24" – 2600) (32" – 2900, 2500)
- Rubicon Central Command Center
- 12V Disconnect Switch
- 6 CU FT LP/Electric Refrigerator w/Black Front Panel (1905)
- 8 CU FT Refrigerator Upgrade (N/A 1905)
- 3-Burner Range
- Fantastic Fan in Kitchen
- Microwave/Convection Oven
- Bottle Opener in Kitchen
- Kitchen Sink Cover
- Hardwood Cabinet Doors
- Residential Cabinet Hardware
- Overhead Cargo Netting
- Laundry Chute in Bedroom (N/A 1905 & 2500)
- Custom Rubicon Foldaway Furniture
- Foot Flush Toilet
- Puck Lighting above Cabinets
- Metal Drawer Guides
- Hard Lambrequin Window Treatments
- Multiple Cable TV Connections
- Directional Digital TV Antenna
- Metal Blinds
- Shower/Tub Surround
- Skylight over Shower/Tub
- Power Bathroom Exhaust Fan
- Mirrored Medicine Cabinet
- Oversized Tinted Safety Glass Windows
- Up to 17' of Cargo Space



Your Local Dealer



5.14 © Thor Industries, Inc.

RUBICON

102" Wide Body Toy Haulers



Model
2900

Scan our quick response code to open our website, and explore the many products we have to offer!



RUBICON
www.Dutchmen.com

Disclaimer: Product information is as accurate as possible as of the date of publication of this brochure. Features, floorplans and specifications are subject to change without notice. Please also consult our website for more current product information and specifications.

Tow Vehicle Disclaimer CAUTION: Owners of Dutchmen Manufacturing, Inc., recreational vehicles are solely responsible for the selection and proper use of tow vehicles. All customers should consult with a motor vehicle manufacturer or their dealer concerning the purchase and use of suitable tow vehicles for Dutchmen products. Dutchmen disclaims any liability or damages suffered as a result of the selection, operation, use or misuse of a tow vehicle. Dutchmen's limited warranty does not cover damage to the recreational vehicle or the tow vehicle as a result of the selection, operation, use or misuse of the tow vehicle.

Rubicon offers something for everyone! Custom foldaway furniture, Jensen stereo system, roomy sleeping areas, storage cabinets everywhere you turn, and durable flooring all provide interiors with great flexibility.

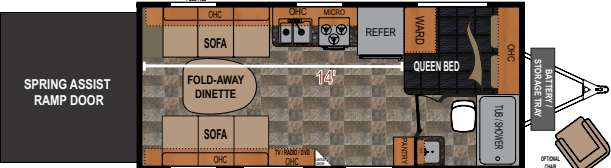


You'll appreciate Rubicon's stain-resistant fabrics, generous counter and storage spaces and attention to detail. Our 8-1/2 foot wide body gives your family extra space to play and relax. From practical, no-nonsense design and comfortable interiors to unlimited versatility, Rubicon makes the perfect base camp.

RUBICON

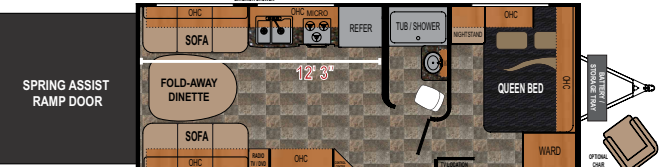
Specifications

1905



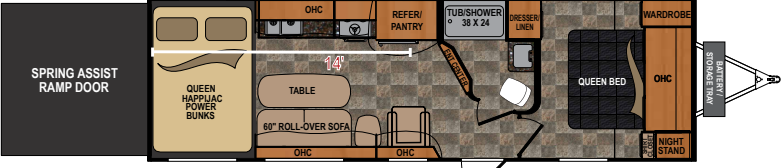
1905
Avg Ship Wt 5,834 Length 24' 8"
Hitch Weight 817 Fresh Water Capacity ... *82
Cargo Capacity 3,166 Black Water Capacity 42
Height 11' 8" Grey Water Capacity 42

2100



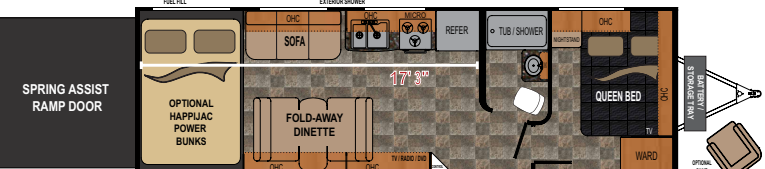
2100
Avg Ship Wt 6,708 Length 26' 1"
Hitch Weight 939 Fresh Water Capacity ... *92
Cargo Capacity 2,792 Black Water Capacity 42
Height 12' 1" Grey Water Capacity 42

2500



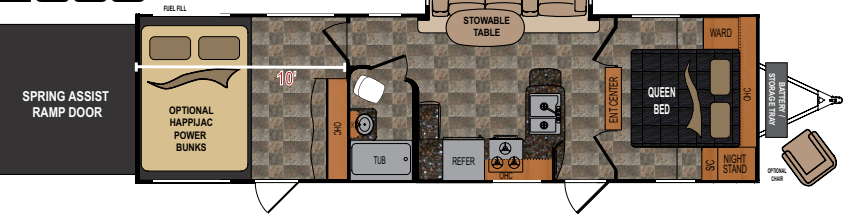
2500 *NEW!*
Avg Ship Wt 7,902 Length 31' 6"
Hitch Weight 1,186 Fresh Water Capacity ... *82
Cargo Capacity 3,098 Black Water Capacity 42
Height 11' 11" Grey Water Capacity 42

2600



2600
Avg Ship Wt 7,842 Length 31' 1"
Hitch Weight 1,098 Fresh Water Capacity ... *92
Cargo Capacity 3,158 Black Water Capacity 42
Height 12' 1" Grey Water Capacity 42

2900



2900
Avg Ship Wt 9,380 Length 34' 8"
Hitch Weight 1,595 Fresh Water Capacity ... *92
Cargo Capacity 2,620 Black Water Capacity 42
Height 12' 3" Grey Water Capacity 42

*Fresh water capacity includes water heater

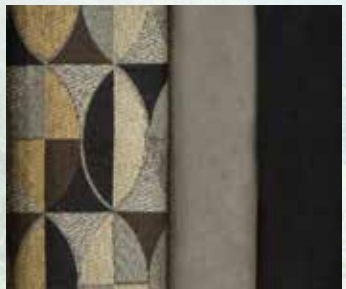
Disclaimer: Features, floorplans and specifications are subject to change without notice. Our weights represent how most units are built, inclusive of many commonly-ordered options.

Decor Choices

Sand



Slate



RUBICON

www.Dutchmen.com