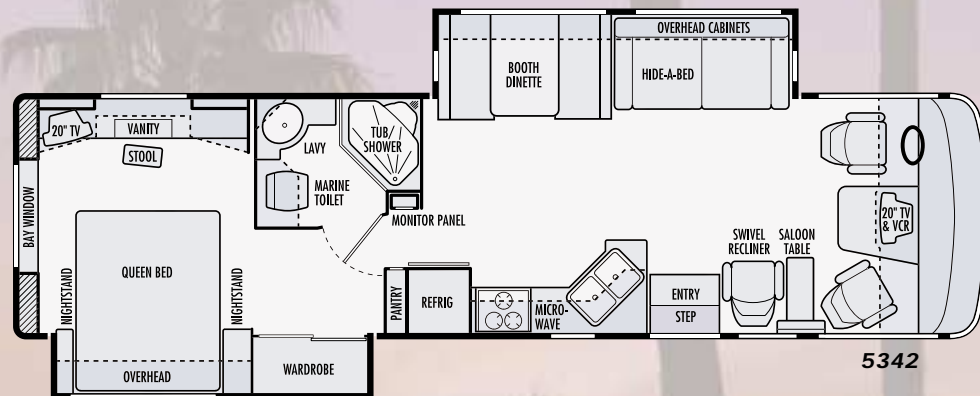
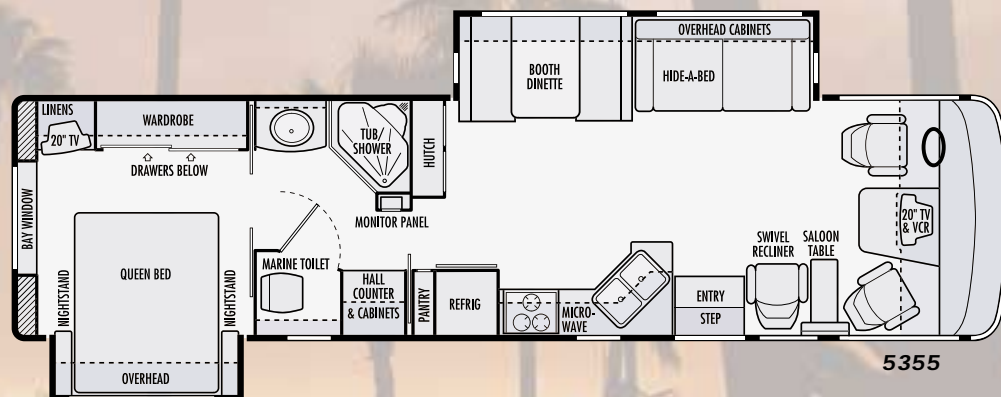


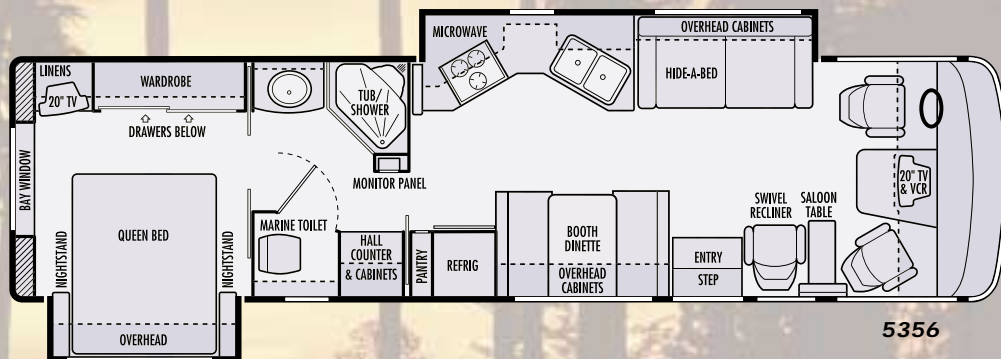
Dolphin



5342



5355



5356



Due to continued product improvement, National R. V., Inc. reserves the right to change materials, colors, specifications and prices at any time without notification. Copyright © 2001 by National R. V., Inc. 08/01

DOLPHIN FEATURES & SPECIFICATIONS

BODY CONSTRUCTION

Duraframe® patented steel sub floor construction
Steel framed laminated floor
Steel framed crowned laminated fiberglass roof
Steel framed laminated fiberglass high gloss walls
Front and rear molded fiberglass caps
Full panoramic tinted windshield
Soft fabric ceiling material
Electric slide-out room with overhead cabinets (flush floor on lounge slide models only)
Front and rear molded fiberglass bumpers
Insulated fiberglass exterior storage compartment doors with integrated paddle latches and gas struts
Steel framed exterior storage compartment with insulated bottoms
Lighted storage compartments and service area
Exterior assist handle
Aluminum rear ladder
Awning rail (rain gutter with drip spouts)
Automotive undercoating as required
Custom vinyl exterior graphics

COCKPIT FEATURES

JVC® AM/FM stereo and CD with six speakers
Driver and passenger map light with switch on dash
Custom dash with full gauge package
Convenience tray
Audible turn signals
Pantographic windshield wipers
Power steering
Cruise control
Tilt steering wheel
Rear vision system with built-in microphone
Overhead dash fans (2 speed)
Power heated rear view mirrors with double convex
Driver and passenger recliner seats
12V/120V receptacle and telephone jack
Passenger work station
Aviation style sun visors
Hydraulic leveling jacks with dash mounted controls
Generator hour meter and control switch
Auxiliary start switch on dash
Wraparound privacy curtain with easy reach wand

APPLIANCES & ACCESSORIES

Theater sound module
8 cu. ft. double door refer

Hair dryer (mounted in bath)
Dust buster vacuum cleaner
Three burner cook top with flush mount Corian® range cover
Space saver convection microwave oven with carousel, built-in light and fan
Systems monitor panel
Cable TV hook-up and telephone jack
TV antenna and booster
Video control box
JVC® 20" color TV with remote control living area and bedroom

INTERIORS

Throughout Coach
Solid oak doors and drawers
Solid oak drawer fronts
Telestrut hardware on overhead doors
Ball bearing roller drawer guides

Living Area
74" Wonder-Bed sleeper sofa
Deluxe rocker recliner with swivel base
Booth dinette with slide-out storage drawers
Deluxe nylon carpet and pad
Day/night shades with designer valances
Hutch and overhead with beveled mirror
Solid oak raised panel cabinet doors

Kitchen Area
Slide-out pantry (not available with side by side refrigerator)
Corian® kitchen countertop with Corian® flush mount stove cover
Sink cover (wood cutting block)
Porcelain sink with single lever faucet
Waste basket
One piece designer Congoleum® vinyl floor
Venetian blinds in kitchen and bedroom
Silverware organizer

Bath Area
Decorative opaque shower glass etching
Medicine cabinet
Towel bars in bathroom

Bedroom Area
Head-to-side queen bed with night stands
Wardrobe with mirrored sliding doors
Color coordinated bedspread, pillows and shams
Radius padded headboard
Bedroom vanity with stool and pull out makeup organizer tray (5342)
Bed slide with four pull out drawers and storage compartment

Dresser cabinet with four drawers (washer/dryer prep) (5355 and 5356)

ELECTRICAL SYSTEMS & LIGHTS

50 Amp MagneTek® power converter and charger
50 Amp 120V distribution panel and cord
Generac® 5.5 kW generator
Two 6V deep cycle house batteries (217 Amp/Hour)
Battery disconnect switch for house batteries
Porch light with interior switch
110V patio receptacle
Recessed fluorescent lights in ceiling
Adjustable reading lights
Designer lights in living and bedroom areas
Cosmetic light in bathroom
10 Watt solar panel (mounted on roof)
GFI protected electrical circuit
Entry step light

PLUMBING & LPG SYSTEMS

Coach Exterior
Heated systems compartment with easy access to hook-ups
Demand water system and water pump
Holding tank rinse system (black tank only)
Winterization antifreeze inlet to pump
Outside shower
Water heater by-pass valve
Pressurized water fill with integrated regulator
Ten gallon gas/electric water heater

Kitchen Area
Water filter in kitchen
Decorative kitchen and bath faucets

Bath Area
One-piece fiberglass neo angle shower with seat
Residential single lever pressure balancing Moen® shower faucet with fixed head
Glass shower door and enclosure
Porcelain toilet with sprayer

SAFETY FEATURES

Extra large rear view mirrors with double convex
Driver and passenger three point lap and shoulder seatbelts
Deadbolt lock on entry door
Fire extinguisher
Smoke, carbon monoxide (CO) and LPG detectors
Egress window(s)

WINDOWS, DOORS & AWNINGS

Radius tinted safety glass windows (sliding windows in living area and jalousie windows in kitchen and bedroom)
Radius entrance door with clear glass, shade and screen door
Electric double entry step with light
Slide-out rooms topper awnings*
Private toilet window (5355 and 5356)
Bedroom rear picture window
Tinted skylight in bathroom

HEATING, VENTS & AIR CONDITIONING

Thermostatically controlled dual 13.5M BTU ducted roof A/Cs
35,000 BTU electronic ignition furnace
Ducted heating system
Attic fan with wall thermostat and rain sensor in galley/living area
12V roof exhaust fan in bathroom
Dash automotive heating and A/C system with defroster

OPTIONAL FEATURES

Coach Exterior
Chrome electric horns
Dual pane windows
Patio awning with metal cover*
Slide-out window awnings*
Bedroom window awning(s)*

Cockpit Area
Six way power driver seat
Driver door with power window
JVC® VCR with remote control
JVC® DVD player
JVC® CD player (12 disc)
400 Watt inverter

Living Area
Dining table with two wooden and two folding chairs
Two wooden folding chairs

Kitchen Area
12 cu. ft. side-by-side refrigerator with icemaker
21" LPG gas oven
5342 and 5355: Corian® countertop extension
Wood plank flooring

Bath Area
5355 and 5356: Combination washer/dryer

Bedroom Area
Day/night shades

CHASSIS SPECIFICATIONS FORD WORKHORSE

Chassis	Super Duty (22,000 GVWR)	W-22 (22,000 GVWR)
Tires	Goodyear RV 245 /70R 19.5 F	Michelin XRV 235/80 R22.5G
Wheels	19.5X6, 8-Lug Steel, SS Liner	22.5X7, 8-Lug Steel, SS Liner
Brakes	Hydro-Boost, 4-Wheel Disc ABS	Hydro-Boost, 4-Wheel Disc ABS
Drive Axle Gear Ratio	5.38:1	5.38:1
Alternator	115 Amp	130 Amp
Chassis Batteries	(1) 750 CCA	(1) 690 CCA
Shock Absorbers	Tuned Bilstein	Tuned Monroe
Chassis Warranty	3 years/36,000 miles	3 years/36,000 miles
Engine	Ford Triton V-10	GM Vortec 8100
Displacement	6.8 Liters (415 cu. in.)	8.1 Liters (496 cu. in.)
Peak Horsepower	310 HP @4,250 RPM	340 HP @4,200 RPM
Peak Torque	425 ft./lbs. @ 3,250 RPM	455 ft./lbs. @ 3,200 RPM
Engine Warranty	3 years/36,000 miles	3 years/36,000 miles
Transmission	Ford 4R100	Allison 1000 Series
Transmission Type	4-Speed Automatic Overdrive	5-Speed Automatic Overdrive
Transmission Warranty	3 years/36,000 miles	3 years/Unlimited miles

WEIGHTS	5342	5355	5356
Ford Chassis			
Gross Vehicle Weight Rating	22,000 lbs.	22,000 lbs.	22,000 lbs.
Gross Combined Weight Rating	26,000 lbs.	26,000 lbs.	26,000 lbs.
Front Gross Axle Weight Rating	7,000 lbs.	7,000 lbs.	7,000 lbs.
Rear Gross Axle Weight Rating	15,000 lbs.	15,000 lbs.	15,000 lbs.
Unloaded Vehicle Weight	TBD	17,400 lbs.	TBD
Maximum Carrying Capacity	TBD	4,600 lbs.	TBD
Cargo Carrying Capacity (CCC)	TBD	2,984 lbs.	TBD
Workhorse Chassis			
Gross Vehicle Weight Rating	22,000 lbs.	22,000 lbs.	22,000 lbs.
Gross Combined Weight Rating	26,000 lbs.	26,000 lbs.	26,000 lbs.
Front Gross Axle Weight Rating	8,000 lbs.	8,000 lbs.	8,000 lbs.
Rear Gross Axle Weight Rating	14,500 lbs.	14,500 lbs.	14,500 lbs.
Unloaded Vehicle Weight	TBD	18,320 lbs.	TBD
Maximum Carrying Capacity	TBD	3,680 lbs.	TBD
Cargo Carrying Capacity (CCC)	TBD	2,064 lbs.	TBD
MEASUREMENTS	5342	5355	5356
Overall Length	35' 0"	36' 0"	36' 0"
Overall Height (Ford Chassis)	11' 9"	11' 9"	11' 9"
Overall Height (Workhorse Chassis)	12' 4"	12' 4"	12' 4"
Interior Height	79 1/2"	79 1/2"	79 1/2"
Interior Width	98 1/2"	98 1/2"	98 1/2"
Exterior Width	102"	102"	102"
TANK CAPACITIES	5342	5355	5356
Water Heater	10 gal.	10 gal.	10 gal.
Gray Tank	60 gal.	60 gal.	60 gal.
Black Tank	50 gal.	50 gal.	50 gal.
Fresh Water Tank	90 gal.	90 gal.	90 gal.
LP-Gas Tank (Volume W.C.)	24.2 gal.	24.2 gal.	24.2 gal.

*Not available on CSA units

Due to continued product improvement. National R. V., Inc. reserves the right to change materials, colors, specifications and prices at any time without notification. Copyright © 2001 by National R. V., Inc. 08/01