

2010 Class C Motorhomes

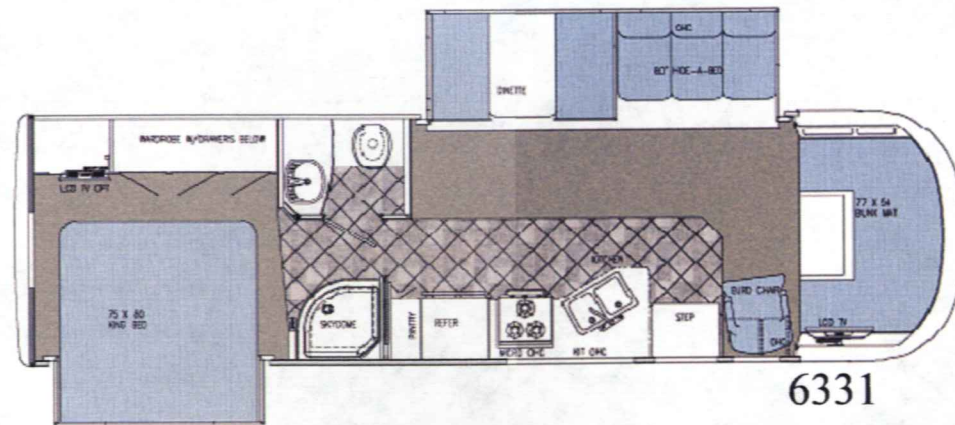
SUPERNOVA



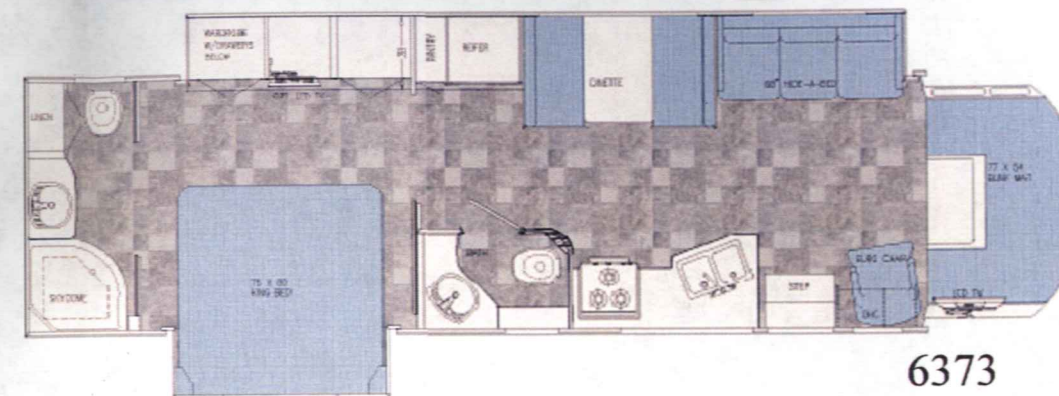
2010



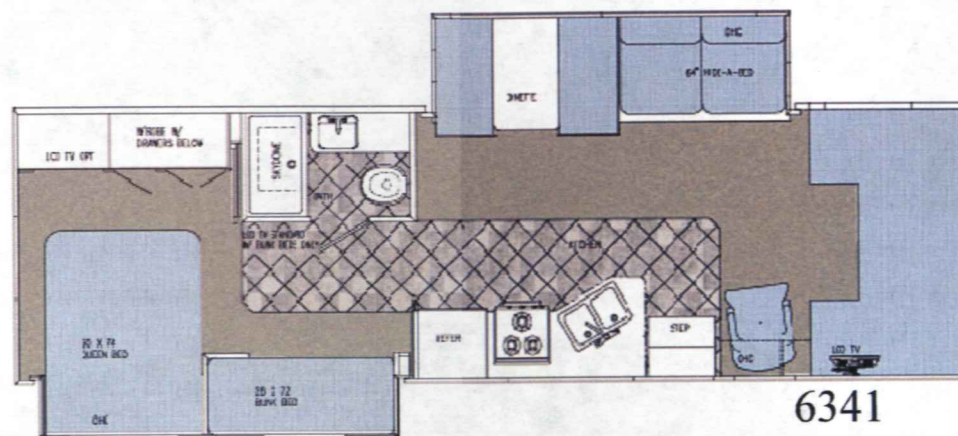
Floorplans and Specifications



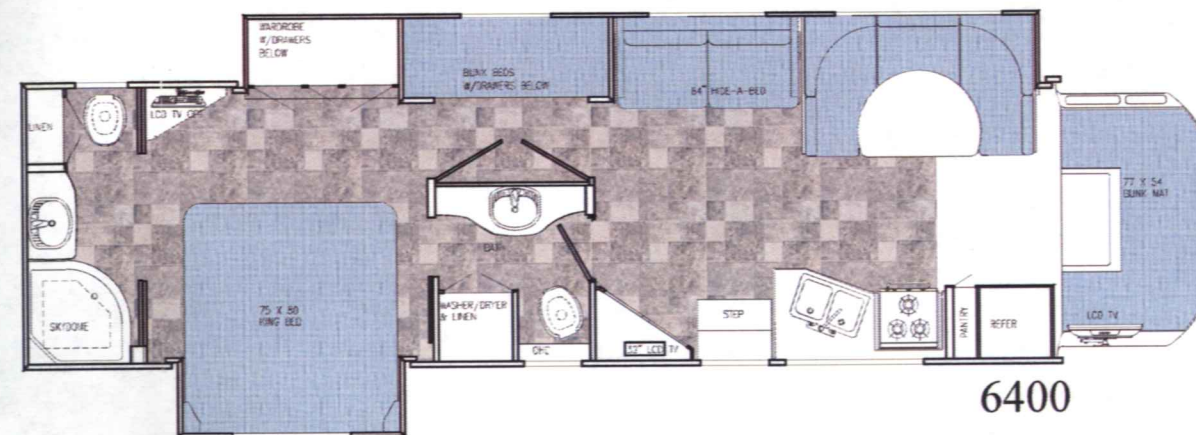
Chassis	INTERNATIONAL 4200
Fuel	140 gal.
GVWR	25,900
Length	34'1"
Height w/AC	127"
Width	101"
Wheelbase	266"
Fresh	150 gal.
Grey	52 gal.
Black	52 gal.
LP Gas Tank	64 lbs.
Furnace (BTU's)	35,000
Water Heater w/DSI	12 gal.
Ext Storage	92.8 cu. ft.



Chassis	INTERNATIONAL 4200
Fuel	140 gal.
GVWR	25,900
Length	37'7"
Height w/AC	127"
Width	101"
Wheelbase	266"
Fresh	150 gal.
Grey	52 gal.
Black	104 gal.
LP Gas Tank	68 lbs.
Furnace (BTU's)	35,000
Water Heater w/DSI	12 gal.
Ext Storage	91.76 cu. ft.



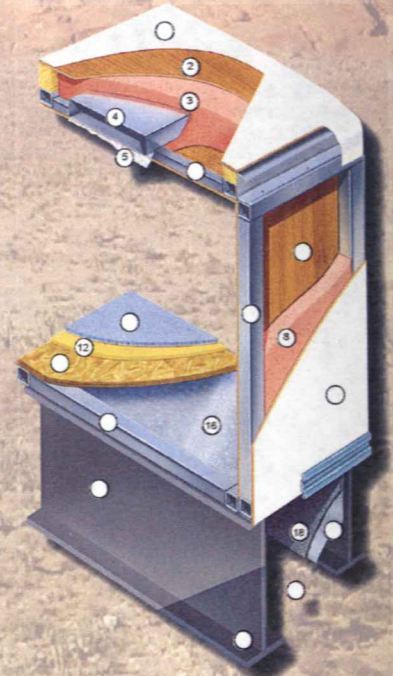
Chassis	INTERNATIONAL 4200
Fuel	140 gal.
GVWR	25,900
Length	36'6"
Height w/AC	127"
Width	101"
Wheelbase	266"
Fresh	150 gal.
Grey	52 gal.
Black	52 gal.
LP Gas Tank	64 lbs.
Furnace (BTU's)	35,000
Water Heater w/DSI	12 gal.
Ext Storage	138.76 cu. ft.



Chassis	INTERNATIONAL 4200
Fuel	140 gal.
GVWR	25,900
Length	40'0"
Height w/AC	127"
Width	101"
Wheelbase	278"
Fresh	150 gal.
Grey	104 gal.
Black	104 gal.
LP Gas Tank	68 lbs.
Furnace (BTU's)	35,000 & 25,000
Water Heater w/DSI	12 gal.
Ext Storage	95.06 cu. ft.



Holding tank capacities (both fresh water and waste water) are volume calculations based on overall tank dimensions. The capacities may differ from published calculations due to the result of tank installation, tank material variation, tank fitting locations and other plumbing variables.



TAKE THE TIME TO COMPARE...

and you will see the exceptional value of a Gulf Stream Coach

1. TPO roof for greater energy efficiency and dependability.
2. Luan Decking for Additional Strength.
3. Molded, High Density EPS (Expanded Polystyrene) Roof Brick Insulation - Provides Consistent Insulation Value as well as Superior Dimensional Rigidity.
4. One-Piece Formed Aluminum Air Conditioning Duct, Completely Surrounded By EPS Insulation.
5. Bubble-Wrapped Foil Insulation Provides Superior Insulation and Helps Prevent Condensation.
6. Rugged Welded Tubular Aluminum Roof Framing.
7. Rugged Heavy-Gauge Tubular Aluminum, Fixture Welded to Form the Sidewall Framing.
8. High-Density EPS Insulation Provides Superior Lamination and Bonding Characteristics and Insures Greater Energy Efficiency.
9. Interior Wall Panels Securely Laminated to Sidewall Framing.
10. "Super Slick" Fiberglass Exterior Vacuum-bond Laminated to Sidewall Framing for Lasting Beauty and Durability.

11. High-Quality Stain-Resistant Carpeting Available in Designer Coordinated Colors.
12. Extra-Thick Padding Under Carpet Provides Extra Comfort and Increases Carpet Durability.
13. Seamless Structurewood Floor Decking Laminated to Steel Floor Structure Assures a Quiet, Long-Lasting Rigid Floor.
14. Heavy-Gauge Tubular Steel Framing, Fixture Welded for Extra Strength and Stability.
15. Heavy-gauge Steel I-Beam Floor Truss System Provides the Strongest Foundation in the Industry.
16. Seamless Layer of Galvanized Steel Securely Attached to the Steel Floor Framing.
17. Galvanized Steel Used to Form Each Storage & Holding Compartment.
18. Durable All-Weather Carpeting Completes Each Accessible Storage Compartment, Providing Extra Protection for Luggage and Valuables.
19. Rust-Prohibitive Paint Coating Applied to All Steel Framing Assures Corrosion and Rust Protection.
20. The Industry's Strongest, Most Spacious Exterior Storage Compartments.

*Estimated length from front to rear cap.

Chassis

- 25,900 GVWR, 300HP VT365 INTERNATIONAL CHASSIS

Exterior

- 7' INTERIOR HEIGHT
- ONE-PIECE FIBERGLASS ROOF
- SUPER SLICK FIBERGLASS SIDEWALLS
- BUS STYLE SLAM LATCH BAGGAGE DOORS
- FLUSH FLOOR SLIDE
- WELDED ALUMINUM PERIMETER FRAME
- LAMINATED 3/8" STRUCTURE BOARD STEEL FLOOR FRAME
- FIBERGLASS FRONT & END CAPS
- ELECTRIC AWNING
- FULL WALL SLIDE (6373, 6400)
- SLIDE OUT ROOM (SOFA/DIN) (6331, 6341)
- SLIDE OUT ROOM (BED)
- RADIUS TINTED WINDOWS
- LIGHTED TRUNK BOXES
- REAR MUD FLAPS
- ELECTRIC MAIN AWNING
- (2) SLIDE OUT TOPPERS
- STAINLESS STEEL WHEEL INSERTS
- HEATED & REMOTE EXTERIOR SIDEVIEW MIRRORS
- FOAM SEAL & UNDERCOATING
- DEAD BOLT LOCK ENTRY DOOR
- ENTRY DOOR ASSIST BAR
- LEVELING JACKS
- HITCH W/PLUG
- AUTO ELECTRIC STEP
- OUTSIDE RINSE & WASH (N/A 6373)

Décor

- HARD ROCK MAPLE INTERIOR
- HARDWOOD STILE CABINET FRONTS
- ROLL GOODS IN KITCHEN, BATH & HALL; CARPET OTHER AREAS
- SHADES THROUGHOUT

- DECORATOR MIRROR
- SOLID SURFACE KITCHEN COUNTERTOP W/SINK & STOVE COVERS
- SOFT TOUCH VINYL CEILING LINER

Heating & Cooling

- DASH AC
- 13,500 BTU LOW PROFILE DUCTED AC (FRONT)
- 11,000 BTU LOW PROFILE DUCTED AC (BEDROOM)
- 35,000 BTU FURNACE
- 25,000 BTU FURNACE IN REAR (6400)
- ARCTIC PACKAGE

Electrical

- EMERGENCY START SWITCH
- TV ANTENNA W/ AMP & BOOST
- MONITOR PANEL
- GENERATOR SWITCH & HOUR METER
- TV JACK IN BEDROOM
- CABLE TV READY
- CEILING LIGHT WALL SWITCH
- CD PLAYER
- G-SOUND
- FLUORESCENT LIGHTS THOUGHOUT
- LCD TV IN FRONT CABOVER
- 32" LCD TV (6400)
- CD/DVD PALYER W/5.1 DOLBY DIGITAL SURROUND SOUND, AM/FM RADIO AND MP3 CAPACITY
- 19" LCD TV ACROSS FROM BUNKS (6341)

Bath

- POWER BATH VENT
- SKYDOME
- GLASS SHOWER DOOR
- CORNER SHOWER W/ SURROUND
- PORCELAIN STOOL

Power

- (2) AUXILLARY BATTERIES
- 50 AMP SERVICE W/AUTO CHANGEOVER & CONVERTER
- 6.0 ONAN DIESEL GENERATOR

- BATTERY DISCONNECT

Furnishings

- ADJUSTABLE KING BED W/LIFTS, INNERSPRING MATTRESS, BEDSPREAD & PILLOWS (N/A 6341)
- QUEEN BED W/LIFTS, INNERSPRINGS MATTRESS, BEDSPREAD & PILLOWS
- U-SHAPE DINETTE (6400, 6373)
- FRONT CABOVER BED
- 6 WAY SOFT TOUCH DRIVER/ PASSENGER SEATS
- SOFT TOUCH H.A.B.
- SOFT TOUCH H.A.B. (DS) (6373)
- INSIDE HANDRAIL
- DECORATIVE SOFA PILLOWS (1 PER SOFA)

Appliances

- CONVECTION MICROWAVE W/3-BURNER TOP
- 12 GAL. ELECTRIC IGNITION WATER HEATER W/BY-PASS VALVE
- LP LEAK DETECTOR
- SMALL 2-WAY DOUBLE DOOR REFER
- LP GAS TANK
- CARBON MONOXIDE DETECTOR

Popular Options

- ☐ 140 GALLON FUEL TANK (REQUIRED)
- ☐ 3-SPEED FANTASTIC ATTIC FAN
- ☐ BLACK FLUSH TANK
- ☐ UPGRADED DASH
- ☐ FIREPLACE (6400)
- ☐ FULL CABOVER ENTERTAINMENT CENTER
- ☐ 15,000 BTU LOW PROFILE DUCTED ROOF AC IPO 13,500
- ☐ THERMOPANE WINDOWS
- ☐ FULL BODY PAINT W/ DOUBLE CLEAR COAT (REQUIRED)
- ☐ SKY VIEW CAP W/SHADE
- ☐ LCD FLAT SCREEN TV W/REMOTE IN REAR BEDROOM
- ☐ DUAL FLIP DOWN DVD PLAYERS IN BUNK AREA (6400 6341)
- ☐ OUTSIDE ENTERTAINMENT CENTER
- ☐ DSS PRE-WIRE
- ☐ BACK-UP MONITOR
- ☐ AVS 100 VIDEO BOX
- ☐ 450W INVERTER
- ☐ RAISED REFER PANELS (N/A W/SIDE BY SIDE)
- ☐ LRG 2-WAY DOUBLE DOOR REFER
- ☐ SIDE BY SIDE REFER
- ☐ SIDE BY SIDE REFER W/ICE MAKER (N/A 6373 6341)
- ☐ COMBO WASHER/DRYER (6400)
- ☐ WASHER/DRYER PREP (6400)
- ☐ CENTRAL VAC SYSTEM
- ☐ 8.0 GENERATOR IPO 6.0 DIESEL
- ☐ EURO CHAIRS IPO SOFA (6400)
- ☐ WARDROBE IPO BUNKS (6400 6341)
- ☐ OFFICE SPACE IPO BUNKS (6400)
- ☐ FREE STAND DINETTE W/2 CHAIRS (6341)
- ☐ (2) ADDITIONAL FOLDING CHAIRS (6341)



WWW.GULFSTREAMRV.COM
1.800.289.8787