

GULF STREAM COACH

CLASS A DIESEL MOTORHOMES

2006

CRESCENDO

By GULF STREAM

GULF STREAM



COACH, INCORPORATED

FAMILY VALUE

*Real Diesel, Real Affordable*

CRESCENDO  
By GULF STREAM



# CRESCENDO

BY GULF STREAM

## OPTIONAL ELECTRONICS PACKAGE 30" LCD



LOW-PROFILE SATELLITE



GPS/MP3 SYSTEM

## GALLEY CONVENIENCE...

Our wide-open galley offers all the comforts of your kitchen at home. 3-burner high performance range; 2-door, 2-way refrigerator and large convection microwave, you will be able to prepare any of your family's favorite meals.



KITCHEN • MODEL 8356

## COMFORT...

Deep set superslides in the main living area dramatically increase the living space of this Motorcoach. Gulf Stream's very own Comfort Plus furniture adorns the entire RV



SOFA • MODEL 8356



DINETTE • MODEL 8386

## LUXURIOUS DINING ...

Gulf Stream delivers true comfort in the design and construction of the dinette table and seating. This optional free-standing dinette offers plenty of space for a full dinner setting enhanced by panoramic windows for the best open view while dining.

The optional free-standing dinette also features a self storing extension to accommodate comfortable seating of four adults.

## SPACIOUS LIVING QUARTERS...

Open living areas that incorporate large slide rooms and residential style furniture make home away from home very comfortable.

The overhead flat screen TV and the entertainment cabinet provide plenty of storage for music and movies to entertain everyone on a rainy day or quiet evening.



LIVING QUARTERS • MODEL 8710

# GULF STREAM

COACH, INCORPORATED  
FAMILY VALUE



LIVING QUARTERS • MODEL 8710

# CRESCENDO

BY GULF STREAM



**COCKPIT • UNIVERSAL**

## MODERN COCKPIT...

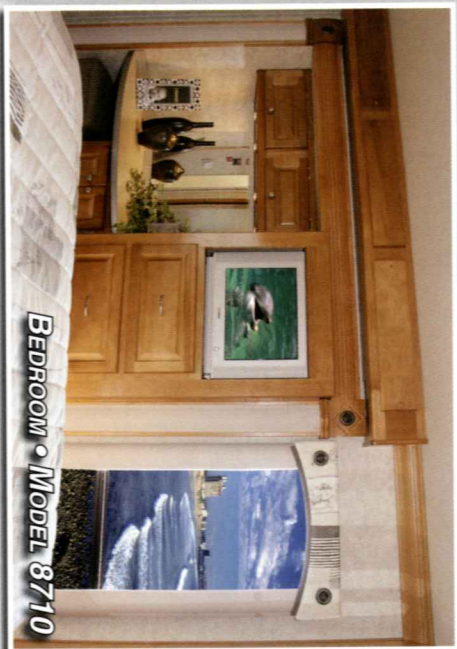
Driving the large and powerful Crescendo may be intimidating at first but once you become accustomed to the controls and smooth handling of the intense 350 horsepower machine you will feel right at home in our ergonomic cockpit designed to put the controls right at your fingertips.



**BATHROOM • MODEL 8356**

## BATHROOM...

The bathroom in the Crescendo makes it easy to prepare for the day ahead. The medicine cabinet mirror and under-sink storage gives you room to hide away personal products, and the skylight in the shower stall provides natural light and additional headroom for tall travelers.



**BEDROOM • MODEL 8710**

## BEDROOM STORAGE...

The Bedroom of the Crescendo delivers plenty of storage for both his and her clothing. All Floorplans include deep dresser drawers and large wardrobe storage to hang attire.



**BEDROOM • MODEL 8386**

## RESTFUL NIGHTS...

Gulf Stream knows that a comfortable night's sleep is an integral part of a great travel experience. That's why we give you many amenities that you enjoy at home in our cozy bedroom areas. Items including a Queen size bed, windows at the head of the bed for ventilation, air conditioning, vanity mirror, overhead storage and Optional 20" flat screen television.



**1<sup>ST</sup> ROOM • MODEL 8386**

# GULF STREAM

COACH, INCORPORATED  
FAMILY VALUE



BEDROOM • MODEL 8710

# Exceeds Exclusive Features & Benefits

## SOLID HARDWOOD CABINETRY



### PREDRILLED HARDWOOD CONSTRUCTION

Our residential style cabinets are constructed of solid hardwood doors and fronts that are predrilled and screwed then they are stained and top coated with a furniture grade finish that provides long lasting beauty and durability as well as adding strength and quietness to your motorhome.

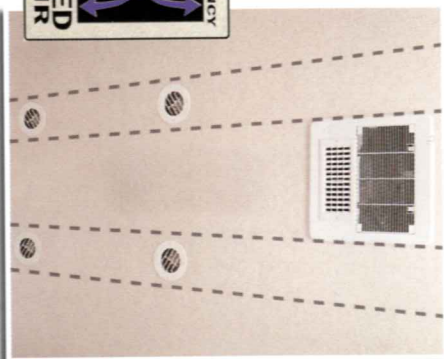
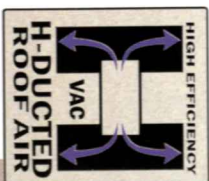
### COMPETITOR'S CABINETRY



Other companies use wrapped cabinet fronts prone to peeling, fading and tearing. The softer composite wood used does not hold screws as well as hardwood resulting in loss of strength and squeaking. Discoloration will degrade the beauty and lower the value of the motorhome.

### GALVANIZED STEEL STORAGE COMPARTMENTS

Seamless, carpeted, galvanized steel storage compartments safely cradle your valuables. Rust protective paint and foam sealed for extended life and a quiet ride.



Dual metal H-Ducted air conditioning system with foil bubble wrapped insulation for superior climate control.

### Excellent Weathering -

Maintaining the vehicle's quality appearance enhances its resale value.

### Seamless FIBERGLASS ROOF

**Tear Resistance** - Flexroofs hard abuse resistant finish resists tearing, a condition that can cause leaks and lead to expensive repair.

**Low Maintenance** - Road grime can easily be removed with normal cleaning maintenance. Rubber chalking due to solar breakdown of the roof surface is eliminated, preserving the original appearance and resale value of the vehicle.

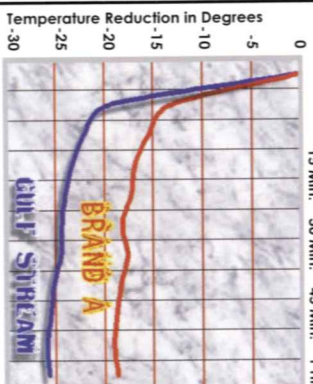
**Stain Resistance** - Fiberglass Flexroof is designed to resist staining and maintain its quality appearance.

**Structural Integrity** - Unlike conventional EPDM rubber roof membranes, Flexroof is a structural component of the roof system.

**Textured Fiberglass** - Helps dissipate heat and prevents tree limbs from tearing or scratching your roof.

### FLUSH FLOOR slide out rooms

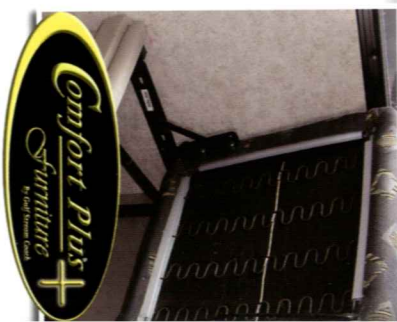
Gulf Stream offers true flush floor slide out rooms to give you more headroom in the slide and eliminates the step up into the slide room that you will experience in many of our competitors motorhomes.



### GULF STREAM VS. BRAND A Cool Down Comparison

- At 15 minutes, Gulf Stream cooled 7 degrees cooler.
  - At 30 minutes, Gulf Stream cooled 9 degrees cooler.
  - At 1 hour, Gulf Stream cooled 9 degrees cooler.
- Finally, empirical data demonstrating the efficiency and performance of a roof air conditioning system versus a floor air conditioning system.
- Winner: Roof air conditioning by Gulf Stream

Comfort Plus furniture by Gulf Stream Coach features residential styling, solid construction, total comfort and a comprehensive warranty.



**24 MONTH 24,000 MILE WARRANTY ON STRUCTURAL COMPONENTS\***

\*Warranty is limited to structural components only. It does not cover mechanical, electrical, plumbing, or other non-structural components. The warranty is void if the motorhome is used for commercial purposes, is involved in an accident, or is damaged by fire, flood, or other external causes. The warranty is also void if the motorhome is not properly maintained. For more details, please refer to the warranty booklet.

# Cradle of Strength

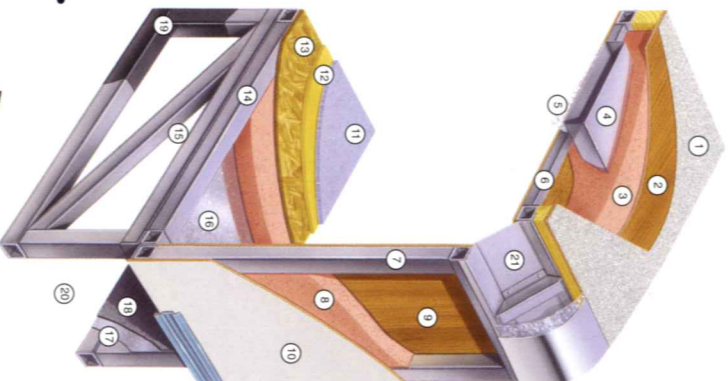


1. Seamless Fiberglass Roof For Greater Energy Efficiency and Dependability.
2. Luan Decking for Additional Strength.
3. Molded, High Density EPS (Expanded Polystyrene) Roof Brick Insulation - Provides Consistent Insulation Value as well as Superior Dimensional Rigidity.
4. One-Piece Formed Aluminum Air Conditioning Duct, Completely Surrounded By EPS Insulation.
5. Bubble-Wrapped Foil Insulation Provides Superior Insulation and Helps Prevent Condensation.
6. Rugged Welded Tubular Aluminum Roof Framing.
7. Rugged Heavy-Gauge Tubular Aluminum, Fixture Welded to Form the Sidewall Framing.
8. High-Density EPS Insulation Provides Superior Lamination and Bonding Characteristics and Insures Greater Energy Efficiency.
9. Interior Wall Panels Securely Laminated to Sidewall Framing.
10. "Super Slick" Fiberglass Exterior Vacuum-bond Laminated to Sidewall Framing for Lasting Beauty and Durability.
11. High-Quality Stain-Resistant Carpeting Available in Designer Coordinated Colors.
12. Extra-Thick Padding Under Carpet Provides Extra Comfort and Increases Carpet Durability.
13. Seamless Structurewood Floor Decking Laminated to Steel Floor Structure Assures a Quiet, Long-Lasting Rigid Floor.
14. Heavy-Gauge Tubular Steel Framing, Fixture Welded for Extra Strength and Stability.
15. Heavy-gauge Tubular Steel Framed, Fixture Welded Floor Truss System Provides the Strongest Foundation in the Industry.
16. Seamless Layer of Galvanized Steel Securely Laminated to the Steel Floor Framing.
17. Galvanized Steel Used to Form Each Storage & Holding Compartment.
18. Durable All-Weather Carpeting Completes Each Accessible Storage Compartment, Providing Extra Protection for Luggage and Valuables.
19. Rust-Prohibitive Paint Coating Applied to All Steel Framing Assures Corrosion and Rust Protection.
20. The Industry's Strongest, Most Spacious Exterior Storage Compartments.
21. Reinforced Heavy-Gauge Steel "W" Transition.

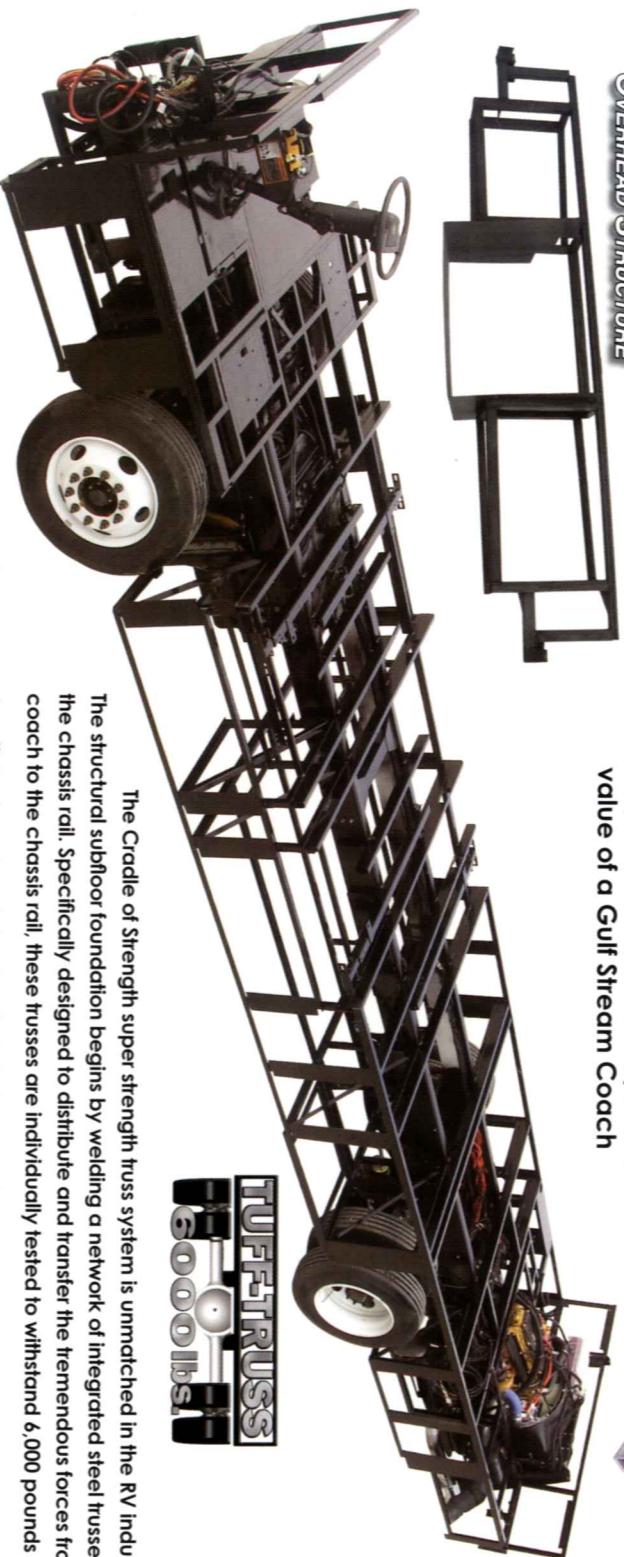
## ALL STEEL OVERHEAD STRUCTURE



**TAKE THE TIME TO COMPARE...**  
and you will see the exceptional value of a Gulf Stream Coach



**TUFF TRUSSES**  
6000 lbs.



The Cradle of Strength super strength truss system is unmatched in the RV industry. The structural subfloor foundation begins by welding a network of integrated steel trusses to the chassis rail. Specifically designed to distribute and transfer the tremendous forces from the coach to the chassis rail, these trusses are individually tested to withstand 6,000 pounds each. An all steel overhead structure installed above the cockpit brings strength and rigidity to the upper portion of the coach, providing a safe strong platform to install a TV that will not break free in an impact while

GULF STREAM



COACH, INCORPORATED

FAMILY VALUE



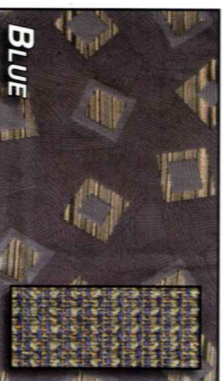
TAN



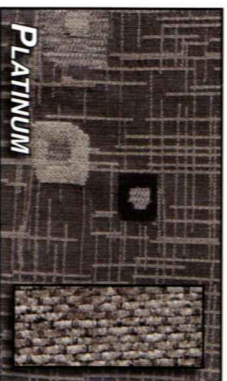
GREEN



CORK CARPET



BLUE



PLATINUM



STONE CARPET



NICKEL PLATE HARDWARE

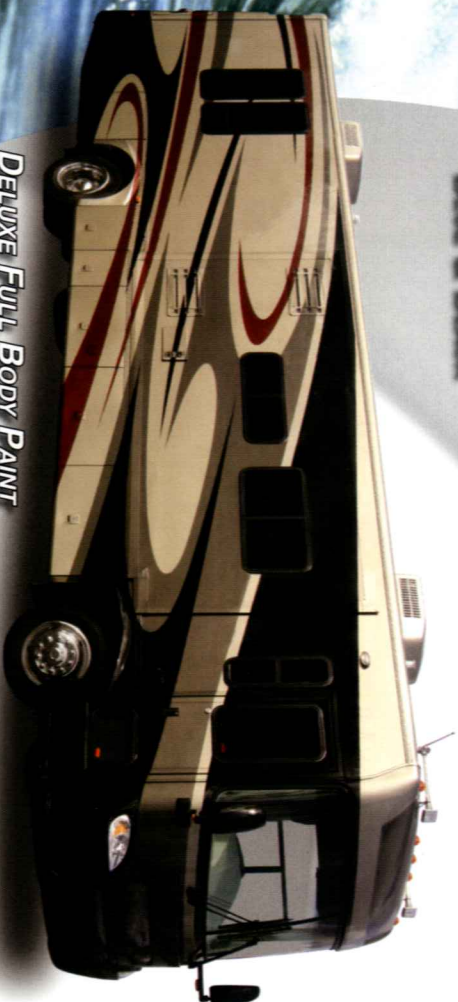
# CRESCENDO

BY GULF STREAM



## DELUXE FULL BODY PAINT BLUE & BLACK

(Crescendo logos are vinyl decals)



## DELUXE FULL BODY PAINT EARTH & BURGANDY

(Crescendo logos are vinyl decals)



## STANDARD BODY PAINT WITH TECH VINYL GRAPHICS

## Exterior Features...

### CONTEMPORARY LOOKS...

Full body paint and two graphic options both protect the exterior and offer a cutting edge look with classic simplicity. Gulf Stream delivers the options you want to protect your investment, suit your budget and visual preference.

### EXTERIOR STORAGE...

The practice of Raised Rail Construction delivers more Ceiling height while increasing the amount of underbody storage space. Gulf Stream Coach uses one piece steel boxes in our underbody storage compartments which are then carpeted on the inside to protect your belongings while traveling down the road and coated with anti-corrosion paint on the underside to prevent deterioration. Slam latch doors on each storage compartment with lights in each and electrical outlets in two will provide all the conveniences you need to load and unload safely with ease.



### SPACIOUS BASEMENT STORAGE

## Model 8386 CRE



Chassis	Freightliner	Width	100"	Grey	75 gal.
Engine	350 Cat	Height w/AC	12'-3"	Black	75 gal.
Fuel	100	Interior Height	84"	LP Gas Tank	115 lbs.
GVWR	29,500	Wheelbase	252"	Furnace (BTU's)	40,000/25,000
Length	38'-8"	Fresh	90 gal.	Water Heater w/DSI	10 gal.

- Chassis**
- 29,500 GVWR, 350 HP CAT FREIGHTLINER, 100 GAL FUEL TANK W/STEEL WHEELS (8386)
  - 32,000 GVWR, 350 HP CAT FREIGHTLINER, 100 GAL FUEL TANK W/STEEL WHEELS (8710)

### Exterior

- "Cradle of Strength" Construction:
  - Welded Steel Sub-Floor Truss System
  - 1-1/2" Tubular Metal Cage Construction on Sidewalls & Roof
  - Insulated Floors w/Virtually Seamless Structurewood Decking
  - Vacuum-Bond Laminated 2" Thick Sidewall Construction Smooth Fiberglass
- PRE-MOLDED FRONT & REAR FIBERGLASS CAPS
- LAMINATED FIBERGLASS ROOF
- SLICK FIBERGLASS EXTERIOR W/GRAPHICS
- SINGLE PANE RADIUS WINDOW

### Décor

- CORION KITCHEN COUNTERTOP
- LINOLEUM IN KITCHEN, BATH & HALL
- PLEATED SHADES
- METAL MINI BLIND KITCHEN
- PRIVACY CURTAIN
- DECORATIVE CEILING LINER
- DECORATIVE CROWN CEILING MOLDING
- OAK HARDWOOD INTERIOR
- MIRROR MEDICINE CABINET

### Heating & Cooling

- DASH A/C
- (1) 40,000 BTU & (1) 25,000 BTU FURNACES
- 13,500 BTU DUCTED ROOF A/C

### Miscellaneous

- COAT HOOK
- ARCTIC PACKAGE
- STAINLESS STEEL WHEEL INSERTS
- EXTERIOR SIDEVIEW MIRRORS
- HYDRAULIC JACK
- TILING SYSTEM
- 10,000 LB TRAILER

- INTERIOR S.S. ENTRY ASSIST HANDLE
- CARPETED STORAGE BINS
- MUD FLAPS (FRONT & REAR)
- FIRE EXTINGUISHER
- DELUXE AWNING
- SLIDE OUT TOPPERS
- POWER STEPPED COVER
- RALLY HOOK UP
- HOSE FAUCET
- TELEPHONE HOOK UP
- CABLE TV HOOK UP
- PAPER TOWEL ROLL DISPENSER
- HEATED HOLDING TANKS

### Bath

- POWER VENT IN COMMODORE & SHOWER AREA
- SKY DOME IN BATH
- SHOWER W/GLASS DOOR & SURROUND
- PORCELAIN STOOL W/SPRAY

### Electrical

- WALL CLOCK
- OVERHEAD DEFROST BLOWER
- BACK-UP MONITOR
- WALL SWITCHES FOR ALL CEILING LIGHTS
- AM/FM/CASSETTE STEREO W/CD PLAYER & SPEAKERS
- EMERGENCY START SWITCH IN DASH
- MAP LIGHTS
- ANTENNA W/AMPLIFIER, BOOSTER & 2 JACKS
- CB ANTENNA
- (1) PHONE JACK IN KITCHEN & (1) IN BEDROOM
- AUTO DOUBLE ELECTRIC STEP
- 24" FLAT SCREEN COLOR TV W/REMOTE IN FRONT OVERHEAD
- DVD READY
- DSS PREP
- LIGHTED EXTERIOR STORAGE BINS

### Furnishings

- 2-TONE PILOT & COPILLOT SEAT
- 3-POINT SEAT BELT

## Model 8710 CRE



Chassis	Freightliner	Width	100"	Grey	75 gal.
Engine	350 Cat	Height w/AC	12'-3"	Black	75 gal.
Fuel	100	Interior Height	84"	LP Gas Tank	115 lbs.
GVWR	32,000	Wheelbase	276"	Furnace (BTU's)	40,000/25,000
Length	40'-9"	Fresh	90 gal.	Water Heater w/DSI	10 gal.

- SOFT TOUCH EURO RECLINER & OTTOMAN (PS) (8710)
- 60 X 74 BED W/DELUXE INNERSPRING MATTRESS (8710)
- 60 X 80 BED W/DELUXE INNERSPRING MATTRESS (8386)
- CLOTH SLEEPER (H-A-B) SOFA (DS)
- CLOTH SOFA (PS)
- BEDROOM CHAIR (8710)
- VANITY BENCH (8710)
- COMFORT PLUS DINETTE BOOTH BED (8386)
- FREE STANDING DINETTE W/(2) RESIDENTIAL CHAIRS (PS) (8710)
- (2) THROW PILLOWS (PER SOFA) & (2) BEDROOM PILLOWS
- SILVERWARE DRAWER

### Appliances

- LARGE DOUBLE DOOR, 2-WAY REFER (RM2662)
- MONITOR PANEL
- 30" OTR CONVECTION MICROWAVE
- 3-BURNER TOP
- FLUSH STOVE TOP COVER
- 10 GAL DSI WATER HEATER
- 115" LP GAS BOTTLE
- CARBON MONOXIDE DETECTOR
- LP GAS LEAK DETECTOR
- PREP FOR WASHER/DRYER
- (2) FOLDING CHAIRS
- 20" FLAT SCREEN COLOR TV IN BEDROOM
- DVD PLAYER
- DELUXE AIR HORNS # 2029GS
- SURROUND SOUND SYSTEM W/DVD PLAYER
- LARGE 2-WAY REFER
- W/ICEMAKER & PURIFIER (RM2862IM)
- SIDE BY SIDE REFER
- W/ICEMAKER & PURIFIER (NDR1292IMH)
- COMBO WASH/DRYER
- HOLDING TANK FLUSH KIT

### Power

- (2) 12 V AUXILIARY BATTERIES (GROUP 27)
- BATTERY DISCONNECT
- 50 AMP SERVICE W/AUTO TRANSFER SWITCH & 75 AMP CONVERTOR
- GENERATOR READY

### Popular Options

- ENTRANCE DOOR AWNING
- ELECTRIC MAIN AWNING
- THERMOPLANE WINDOWS
- HEATED & REMOTE MIRRORS
- FULLY AUTO HYDRAULIC JACKS
- REAR LADDER
- REAR ROCKGUARD
- FULL PAINT W/PAINTED GRAPHICS
- SAND & BUFE
- BEDROOM 13,500 BTU DUCTED ROOF A/C
- 15,000 BTU DUCTED A/C IPO 13,500 BTU A/C
- 3-SPEED FANTASTIC ATTIC FAN
- 2000 WATT INVERTER
- W/(4) 6 VOLT BATTERIES IPO (2) 12 VOLT
- 7.5 ONAN QUIET DIESEL GENERATOR
- 7.5 GENERAC QUIET DIESEL GENERATOR
- 2-TONE 6-WAY POWER PILOT/COPILLOT SEAT
- SOFT TOUCH SOFA IPO CLOTH (PS)
- SOFT TOUCH SLEEPER (H-A-B) SOFA IPO CLOTH SLEEPER SOFA (DS)
- EURO RECLINER IPO BEDROOM CHAIR (8710)
- F/S DINETTE W/(2) RESIDENTIAL DINING CHAIRS IPO BOOTH DINETTE (8386)
- COMFORT PLUS BOOTH DINETTE IPO FREE STANDING (8710)
- (2) FOLDING CHAIRS
- 20" FLAT SCREEN COLOR TV IN BEDROOM
- DVD PLAYER
- DELUXE AIR HORNS # 2029GS
- SURROUND SOUND SYSTEM W/DVD PLAYER
- LARGE 2-WAY REFER
- W/ICEMAKER & PURIFIER (RM2862IM)
- SIDE BY SIDE REFER
- W/ICEMAKER & PURIFIER (NDR1292IMH)
- COMBO WASH/DRYER
- HOLDING TANK FLUSH KIT

**Coach-Net®**

24 HR. EMERGENCY ROADSIDE ASSISTANCE

• One Year Coach-Net Membership

• Towing and Winching

• Tire Change

• Lockout

• Delivery of emergency Fluids

• Jump-Start / Battery Boost

# CRESCENDO SE

BY GULF STREAM



## CRESCENDO SE DIESEL PUSHER

- 330hp Cummins
- 6 Speed Allison Transmission
- 28,000 lbs. GVWR (8356)
- 29,500 lbs. GVWR (8386)
- Raised Rail Construction
- Full Air Suspension
- VIP Steering Wheel
- 7.5 Quiet Diesel Generator
- Full Air Brake System
- Two or Three SlideRooms
- Front A/C and Optional Rear A/C
- Optional Home Theatre System w/DVD and 24" Flatscreen TV
- Seamless Fiberglass Roof
- Residential Crown Molding
- Hardwood Cabinetry
- Corian Kitchen Countertops
- Laminated Sidewalls
- Cradle of Strength Construction
- Painted Exterior with Hi-Tech Vinyl Graphics
- 40,000 BTU Front Furnace
- 25,000 BTU Rear Furnace

### MODEL 8356 CRW



### MODEL 8386 CRW



Chassis	Workhorse	Width
Engine	330 Cummins	11'-10"
Fuel	100	Interior Height 80"
GVWR	28,000	Wheelbase 228"
Length	36'-4"	Fresh 70 gal.

Grey	75 gal.
Black	75 gal.
LP Gas Tank	115 lbs.
Furnace (BTU's)	40,000/25,000
Water Heater w/DSI	10 gal.

Chassis	Workhorse	Width
Engine	330 Cummins	11'-10"
Fuel	100	Interior Height 80"
GVWR	29,500	Wheelbase 252"
Length	38'-8"	Fresh 70 gal.

Grey	75 gal.
Black	75 gal.
LP Gas Tank	115 lbs.
Furnace (BTU's)	40,000/25,000
Water Heater w/DSI	10 gal.

# CRESCEENDO

**FRONT ENGINE  
DIESEL**



**12\*  
MPG.**



GULF STREAM



COACH, INCORPORATED  
FAMILY VALUE

## Features & Benefits

- CUMMINS ISB 300HP - 5.9L DIESEL ENGINE 600 LBS.-FT. OF TORQUE - 22.5" TIRES
- 26,000 GVWR FREIGHTLINER
- 50 - DEGREE WHEEL CUT
- 60" PARABOLIC LEAF SPRING / SACHS SHOCKS
- BOSH DISC BRAKES W/4-WHEEL ABS
- LOWERED CENTER OF GRAVITY
- LOWERED ENGINE MOUNT
- 80 GALLON FUEL TANK - IMPROVED MPG
- 15,000 MILE OIL CHANGE INTERVAL
- 5-YEAR / 100,000-MILE COOLANT
- 400%-LONGER-LIFE TRANSMISSION FLUID
- READILY IDENTIFIABLE SERVICE POINTS

- HARDWOOD CABINETRY
- SEAMLESS THERMO POLY-OLEFIN ROOF
- GALVANIZED STEEL COMPARTMENTS
- FLUSH FLOOR SLIDE OUT ROOMS
- 13,500 BTU H-DUCTED ROOF A/C
- 11,000 BTU DUCTED BEDROOM A/C
- 40,000 BTU FURNACE
- CORIAN KITCHEN COUNTERTOPS
- 30" CONVECTION OVEN
- 3-BURNER RANGE TOP
- LARGE DOUBLE DOOR 2-WAY REFRIGERATOR
- 10 GALLON WATER HEATER
- 7.5 DIESEL GENERATOR
- HYDRAULIC JACK LEVELING SYSTEM
- 3-SPEED FANTASTIC FAN
- COLOR BACK-UP MONITOR
- 24" FLAT SCREEN TV
- 20" FLAT SCREEN BEDROOM TV
- HEATED / REMOTE MIRRORS
- ARCTIC PACKAGE - HEATED HOLDING TANKS
- THERMO PANE WINDOWS
- 5,000 LBS. HITCH
- REAR LADDER
- ELECTRIC IGNITION WATER HEATER W/BY-PASS VALVE
- 85# LP GAS BOTTLE
- LP GAS LEAK DETECTOR
- CARBON MONOXIDE DETECTOR



**TWO-ZONE LIVING**



**MODEL 8361 FD**

Chassis	Freightliner	Height w/AC	12'-0"
Engine	5.9L 300hp	Interior Height	84"
Fuel	80	Wheelbase	228"
GVWR	26,000	Fresh	60 gal.
Length	35'-8"	Grey	50 gal.
Width	96"	Black	50 gal.

LP Gas Tank	85 lbs.
Furnace (BTU's)	40,000
A/C Front (BTU's)	13,500
Water Heater w/DSI	10 gal.

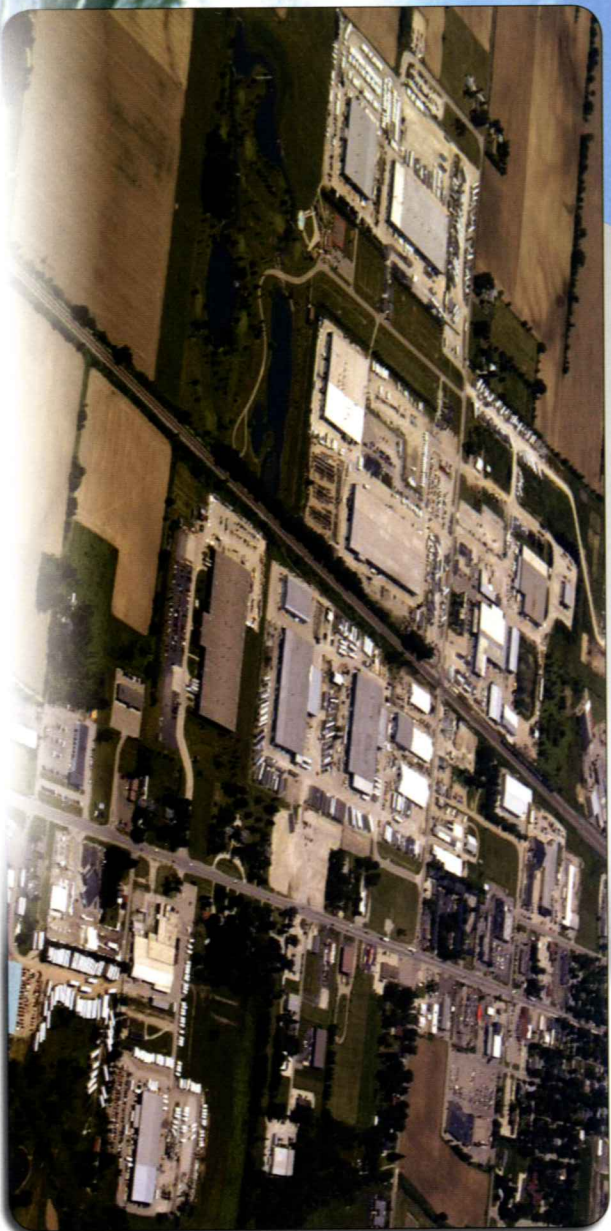


**MODEL 8368 FD**

Chassis	Freightliner	Height w/AC	12'-0"
Engine	5.9L 300hp	Interior Height	84"
Fuel	80	Wheelbase	242"
GVWR	26,000	Fresh	60 gal.
Length	36'-8"	Grey	50 gal.
Width	96"	Black	50 gal.

LP Gas Tank	85 lbs.
Furnace (BTU's)	40,000
A/C Front (BTU's)	13,500
Water Heater w/DSI	10 gal.

\*AC usage will vary depending on conditions and driving habits.



## GULF STREAM FACILITIES...

Located in the heart of the Amish country, the complex, along with Gulf Stream's affiliate, Fairmont Homes, Inc., covers over 400 acres and includes more than 1.5 million square feet of state-of-the-art manufacturing facilities. With over 20 years of manufacturing experience producing quality Recreational Vehicles, Gulf Stream is the leading manufacturer of high quality and high value RV products that are distributed through a partnership relation with independent dealers who are focused on meeting customer expectations.

## EXCEPTIONAL VALUE...

Your family and friends will feel safe and comfortable wrapped in Gulf Stream's "Cradle of Strength". Comfort, Quietness and Insulation from the elements is what you will experience from Gulf Stream's "Tried and Tested" Motorhomes. Compare... and you will find the exceptional value of a Gulf Stream Motorhome.

# GULF STREAM



COACH, INCORPORATED

FAMILY VALUE

Post Office Box 1005  
NAPPANEE, IN 46550  
• YOUR GULF STREAM COACH DEALER •



The Gulf Streamers RV Club is a valuable benefit to all Gulf Stream owners. Members enjoy staying active and participating in the various rallies and caravans offered throughout the United States and Canada. The Main Stream, the club Magazine, with up-to-date product information, service tips and company highlights. Members benefit from the Emergency Road Service and Gulf Streamers benefit from the friendly, reliable service. The 10% discount program at campgrounds throughout the U.S. and Canada. As a member, you'll receive discounts at National Theme Parks and special attractions, including RV and travel guides, directories and magazines.

Gulf Streamers spend time touring attractions, enjoying fabulous meals, taking in area highlights and shows to help make the most out of your RV experience. Special rallies throughout the year include Gulf Stream supplier seminars, complimentary minor repairs by Gulf Stream technicians, Gulf Stream dealer product displays and round table discussions to voice your product improvement ideas.



**VISIT**  
**WWW.GULFSTREAMRV.COM**

**FOR MORE DETAILED INFORMATION...  
OR CALL 1-800-765-8787-EXT. 3288**

For more information and available options, contact your local Gulf Stream dealer, [www.gulfstreamrv.com](http://www.gulfstreamrv.com) or Gulf Stream Coach, Inc., Gulf Stream Coach, Inc., reserves the right to make changes in prices, colors, materials, components and specifications and to discontinue models at any time without notice or obligation. Gulf Stream Coach, Inc., assumes no responsibility for any error or print reproduction of specifications or floorplans in this brochure. Photographs may show equipment or items that are of other manufacturers and are not included in the purchase price of the vehicle. Test drive and review a current model at your nearest Gulf Stream dealer. © 2002 Gulf Stream Coach, Inc., Nappanee, IN.

11/05-SP-10K