



Where Ultra-Lite Meets Luxury

KODIAK

STANDARD AND OPTIONAL FEATURES

STANDARD FEATURES

FUEL SAVER FRONT PROFILE

- Aerodynamic Front Profile Designed for Maximum Aerodynamics
- Streamlined Profile Reduces Air Turbulence for a more Stable Ride
- Improves Fuel Efficiency

BEAR CAGE CONSTRUCTION

- 6 Sided Welded Aluminum Cage Construction
- 5 Way Lamination - Roof, Floor, Sidewalls and Rear Wall
- Fully Laminated, Aluminum Framed Roof
- 5" Laminated Crowned Roof with Ducted A/C (8' Wide TT's)
- 2" Thick Aluminum Framed Laminated Roof (7' Wide TT and Expandable)
- High Gloss Gel Coated Filon Fiberglass Exterior

POLAR PACKAGE

- Heated and Enclosed Underbelly Protects Bottom of Trailer from Road Debris and Damage ↔*
- Enhances Aerodynamics of Trailer
- Beauflor Flooring - Cold, Crack Resistant

EZ LUBE CUSTOM STANCE SUSPENSION

- Heavy Duty Axles
- 4 Wheel Electric Drum Brakes
- Easy Lube Hubs on Axles ↔*
- Radial Tires (Required Option) ↔*
- 14" Tires Expandable 7' Wides
- 15" Tires 8' Wides

BEAR CAVE STORAGE

- Oversized Pass Thru Storage
- Slam Latch Cargo Doors (N/A Expandables)
- Storage Light
- 110V Outlet
- Cable Hookup

ACU-WEIGHT CERTIFICATION

- Real Weights - All Units Weighed before Leaving the Factory
- Weights Include Options - See Decal in Unit for Exact Weight of your Unit

ALUMINUM FRAMED FURNITURE

- Welded Aluminum Framed Construction-Bed Bases and Front Pass Through
- Stronger and Lighter Than Wood Construction

EXTERIOR CONSTRUCTION

SLIDE OUT COOK TOP

- Slide Out 2 Burner Outdoor Stove (8' Wide TT's)
- LP Quick Connect (7' Wides and Expandables)

FRAME

- Lightweight I-Beam Frame with E-Coat Finish
- 4" Square Rear Bumper with Sewer Hose Storage
- Dual Battery Tray
- 2 5/16" Coupler
- Hitch Light
- Break-Away Trailer Switch
- Heavy Duty Safety Chains
- Four Corner Stabilizer Jacks ↔*
- 12V Electric Slide-Out Motor with Override
- Spare Tire with Cover ↔*
- Two 20 Lb. Lp Bottles with ABS Cover
- Double Folding Entry Step

ROOF

- Fully Laminated, Aluminum Framed Roof
- EPDM One-Piece Seamless Rubber Roof
- Rain Gutter with Extended Corner Downspouts

VIEW MASTER WINDOWS

- Large Picture Windows at Dinette
- Tinted, Radius Corner, Clamp Ring Safety Glass Windows

WALLS

- Large Adjustable Power Awning ↔*
- Diamond Plate Rock Guard ↔*
- Molded Fender Skirts (8' Wide TT's and Expandables)
- Pac-N-Play Exterior Storage (See Floorplans)
- Exterior Wash Station with Quick Connect Hose
- Deluxe Folding Entry-Assist Handle at Door (8' Wide TT's) *
- 120V Exterior Outlet
- Radius Corner Entry Door
- Flush Combo Entry Latch/Dead Bolt Lock
- Exterior Security Light

INTERIOR FEATURES

STORE MORE CABINETRY

- New Cabinet Design - More Storage Space - Full Access Cabinets, Larger Drawers
- Cherry Hardwood Doors and Drawer Fronts Throughout
- Large Galley Storage Pantry (See Floorplans for Availability)
- Large Pots and Pan Storage Solid Wood Drawers with Full Extension Drawer Glides (See Floorplans for Availability)

SOLID SURFACE COUNTERTOPS ↔*

- Stainless Steel Undermount Sink

MEDIA CENTER PREMIUM ENTERTAINMENT SYSTEM

- 19", 26" and 32" Flat Screen HD LCD TV (8' Wide TT's) *
- TV Prep - 7' Wide TT's and Expandable
- 12V AM/FM/CD/DVD Stereo with MP3 Input ↔*
- Interior and Exterior Speakers ↔*
- TV Antenna
- Wired for Cable
- Bedroom TV Prep for Flat Panel TV's

CENTRAL CONTROL STATION

- Convenient Location for Main Switches and Monitor panel
- Slide Out Controls
- Water Pump Switch
- Interior and Exterior Light Switches
- Gas/Electric Water Heater Controls (N/A 7' Wides)

OTHER INTERIOR FEATURES

- Residential Furniture Design With High Grade Fabrics
- 74" X 54" Oversized U-Shaped Dinette - See Floorplans
- Residential Tile-Like Linoleum
- Fabric Night Shades throughout (8' Wide TT's) ↔*
- Designer Window Treatments
- Designer Wall Border
- 60/40 Stainless Steel Sink with Hi-Rise Galley
- Pull Out Faucet
- Systems Monitor Panel
- Fire Extinguisher ↔*
- LP/Carbon Monoxide/Smoke Detectors ↔*

BATHROOM FEATURES

- Fiberlink Bathtub or Shower (See Floorplans)
- Tub/Shower Surround ↔*
- Skylight Over Tub/Shower ↔*
- Shower Curtain - See Floorplans
- Glass Shower Door with Neo-Angle Shower (See Floorplans)
- Foot Flush Toilet ↔*
- Wood Medicine Cabinet with Mirror
- Power Roof Vent
- Toilet Tissue Holder
- Towel Hooks

BEARS DEN - EXPANDABLE TENT ENDS

- New Tent Design with Self-Supporting Bunk Ends - 1,200 Pound Capacity
- 5" Thick Futon Mattress - Expandables
- Key-Locking "Easy Latch" Tent Doors
- 60" X 80" Beds In Tents
- Bunk End Lights With Fan - Expandables
- Evergreen Upgraded Mattress (7' & 8' Wide TT's)

BEDROOM FEATURES - 8 WIDES

- Designer Bedroom Package with Bedspread, Headboard and Window Treatments
- Roof Vent in Bedroom

APPLIANCES, ELECTRICAL, PLUMBING & LIGHTING

- Double Door 6.3 Cu. Foot Gas/Electric Refrigerator (8' Wide TT's and Expandables) ↔*
- Black Panel Refrigerator Front
- Microwave with Carousel ↔*
- 3 Burner Range with 17" Oven (8' Wide TT's and Expandables) ↔*
- 2 Burner Cook Top (7' Wide TT's)
- Range Hood With 12V Light and Exhaust Fan
- 13.5K Air Conditioner with Quick Cool Vent ↔*
- In-Roof Ducting for A/C (8' Wide TT's)
- Insulated and Foil Wrapped AC Ducting (8' Wide TT's)
- Detachable 30 AMP Power Cord
- 6 Gallon Gas/Electric Water Heater with DSI ↔*
- Water Bypass Kit
- Hot and Cold Water Low Point Drains
- 46 Gallon Fresh Water Tanks (8' Wide TT's and Expandables)
- Solid State Converter with Built-in Battery Charger

OPTIONS

- Aluminum Rims
- Power Front Jack

PACKAGES

- * Ultimate Package
- ↔ Advantage Package
- ← Premium Package

Your Local Dealer



www.kodiak-rv.com

Follow "DutchmenRV" on



Dutchmen

P.O. BOX 2164

2164 Caragana Court
Goshen, Indiana 46526

Sales: 574.537.0600

Fax: 574.975.6274

Some Features Listed Above May Be Part of a Value Package - Contact Your Local Dealer for the Details

Product information, specifications and photography in this brochure were as accurate as possible at time of printing. Prices and specifications are subject to change without notice. All capacities are approximate and dimensions are nominal. Some features are optional.

KODIAK

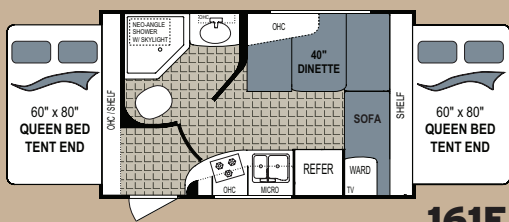


*The
Kodiak
Advantage*

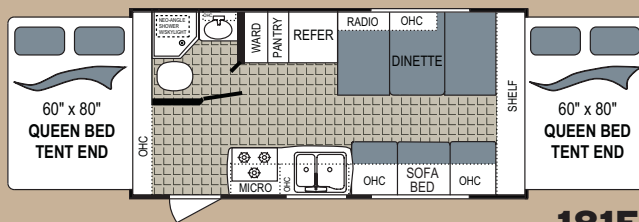
Key Features

- SLAM LATCH STORAGE DOORS
- BEAR CAVE STORAGE
- BEAR CAGE CONSTRUCTION
- 6 WAY WELDED ALUMINUM CONSTRUCTION
- 5 WAY LAMINATION
- POLAR PACKAGE INSULATION
- STAINLESS STEEL SINK
- DELUXE SPRAYER FAUCET
- SOLID SURFACE COUNTERTOPS
- CENTRAL CONTROL STATION
- EXTERIOR COOK STATION
- POWER AWNING
- UPGRADED EVERGREEN MATTRESS
- EZ LUBE AXLES
- FLAT SCREEN LCD HD TV - 8' WIDES
- FABRIC PRIVACY SHADES
- SUPER SLIDEROOM WITH U-SHAPED DINETTE

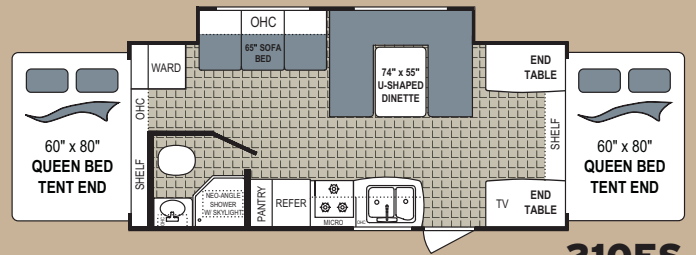
EXPANDABLE ULTRA-LITE TRAILERS



161E

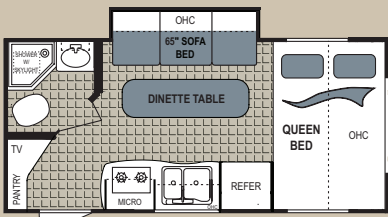


181E

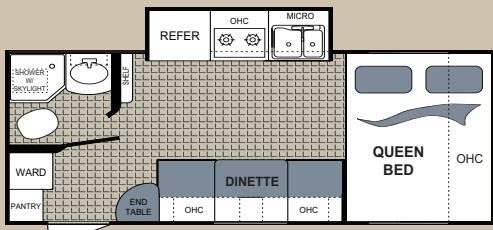


210ES

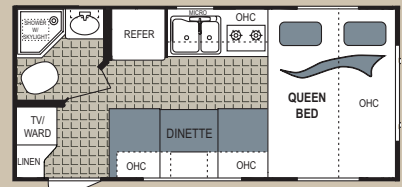
SEVEN WIDE ULTRA-LITE TRAILERS



167QBSL

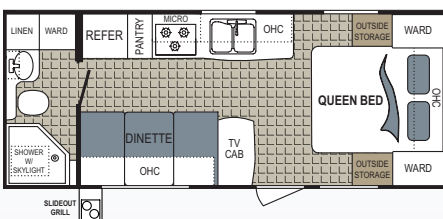


177QB-SL

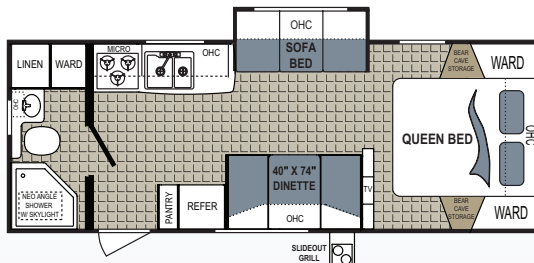


187QB

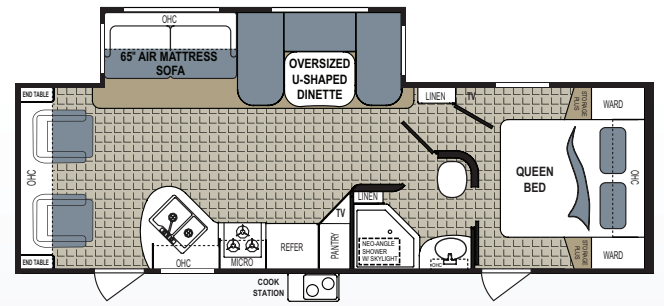
EIGHT WIDE ULTRA-LITE TRAILERS



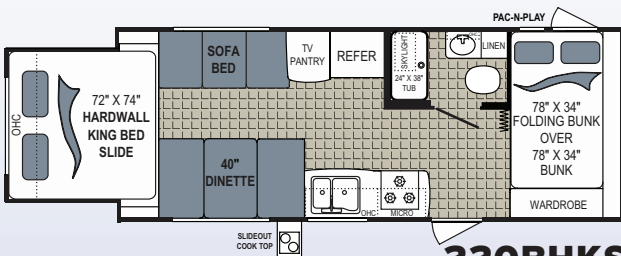
200QB



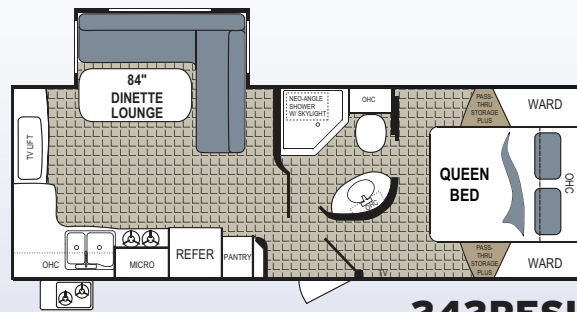
241RBSL



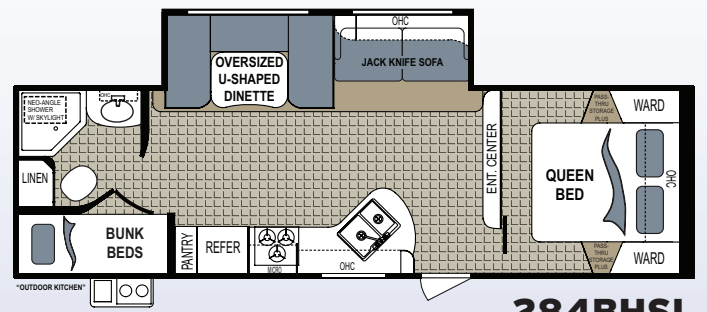
263RLSL



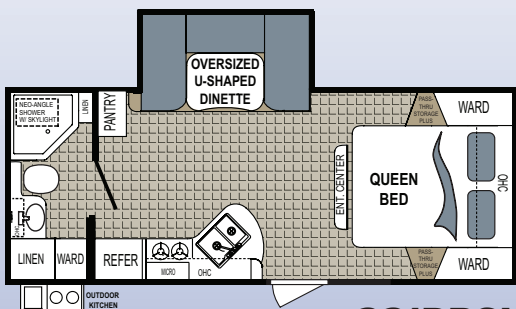
220BHKS



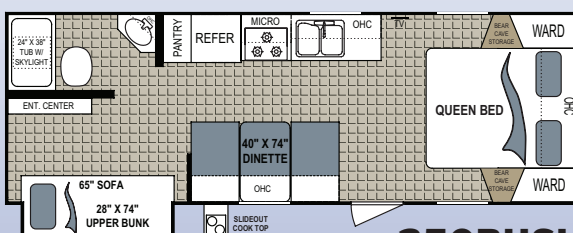
242RESL



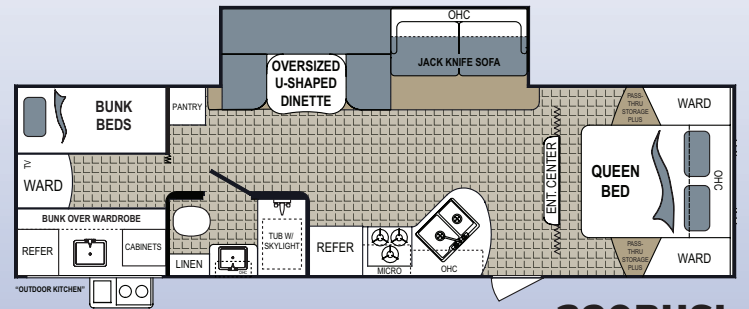
284BHSL



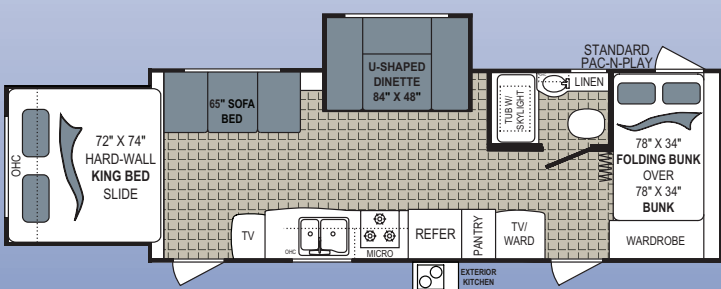
221RBSL



250BHSL



290BHSL



240KSSL

WEIGHTS & SPECIFICATIONS

2011 Model Name	Hitch (lbs)	Unload Weight (lbs)	Cargo Capacity (lbs)	Overall Height	Overall Length	Fresh Water (gal)	Grey Water (gal)	Black Water (gal)	Furnace Size BTU	Tire Size and Ply Rating
161E	426	3086	664	9' 10"	17' 9"	46	39	28	19,000	ST205/75R14(C)
167QBSL	290	3254	1446	9' 10"	19' 7"	46	39	22	19,000	ST205/75R14(C)
177QBSL	266	3254	1446	9' 10"	20' 5"	46	39	22	19,000	ST205/75R14(C)
181E	324	3520	1480	9' 10"	20' 8"	52	39	22	19,000	ST205/75R14(C)
187QB	222	2906	1794	9' 10"	19' 2"	33	39	22	19,000	ST205/75R14(C)
200QB	322	3874	1526	10' 2"	24' 2"	52	39	28	19,000	ST205/75R14(C)
210ES	498	4092	1408	9' 10"	23' 11"	52	39	22	19,000	ST205/75R14(C)
220BHKS	474	4294	1106	10' 0"	24' 9"	52	39	22	19,000	ST205/75R14(C)
221RBSL	574	4604	1396	10' 8"	24' 8"	46	39	28	19,000	ST205/75R14(C)
240KSSL	736	5214	1386	10' 5"	29' 1"	52	39	52	30,000	ST205/75R14(C)
241RBSL	396	4412	1588	10' 0"	27' 2"	52	39	28	19,000	ST205/75R14(C)
242RESL	452	4964	1636	10' 8"	27' 7"	46	22	39	30,000	ST205/75R15(C)
250BHSL	558	4398	2202	10' 1"	27' 11"	52	39	28	30,000	ST205/75R14(C)
263RLSL	768	5674	1926	10' 7"	30' 9"	46	28	39	30,000	ST205/75R15(C)
284BHSL	686	5708	1892	10' 8"	31' 10"	46	39	28	30,000	ST205/75R14(C)
290BHSL	866	5800	1800	10' 8"	33' 4"	46	39	22	30,000	ST205/75R14(C)