

2002

A M E R I C A N • T R A D I T I O N[®]

from American Coach



D I M E N S I O N S & C A P A C I T I E S

Weights (pounds)

	40-M	40-Q	40-K	40-H	40-U
GVWR (lbs.)(1)	33,700	33,700	33,700	33,700	33,700
Front GAWR (lbs.)(2)	13,700	13,700	13,700	13,700	13,700
Rear GAWR (lbs.)(2)	20,000	20,000	20,000	20,000	20,000
Base Weight (lbs.)(3)	27,550	27,400	27,500	27,500	27,100
GCWR (lbs.)(4)	43,700	43,700	43,700	43,700	43,700
Hitch Rating Weight (lbs.)*	10,000	10,000	10,000	10,000	10,000
Tongue Weight (lbs.)	1,000	1,000	1,000	1,000	1,000

Tank & Liquid Capacities (gallons)

	40-M	40-Q	40-K	40-H	40-U
Fresh Water Holding Tank (gal.)	95	95	95	95	95
Grey Water Holding Tank (gal.)	60	60	60	60	60
Black Water Holding Tank (gal.)	40	40	40	40	40
Appliance LPG Tank (WC) (7)	40.3	40.3	40.3	40.3	40.3
Water Heater Tank (gal.)	10	10	10	10	10
Fuel Capacity (gal.)	150	150	150	150	150

Measurements

	40-M	40-Q	40-K	40-H	40-U
Wheel Base	266"	266"	266"	266"	266"
Overall Length (5)	40'	40'	40'	40'	40'
Overall Height w/AC	12' 2"	12' 2"	12' 2"	12' 2"	12' 2"
Overall Width (max) (6)	101.5"	101.5"	101.5"	101.5"	101.5"
Interior Height (max)	82"	82"	82"	82"	82"
Interior Width (max)	96"	96"	96"	96"	96"

Chassis

Frame	Spartan® Mountain Master GT Stacked Rail
Engine	Cummins® C.8.3L/350 hp ISC Diesel
Torque	1050 @ 1400 RPM
Transmission	Allison® 3000 MH, 6-Speed w/Electronic Shifter
Alternator Amps	200 Amp Leece Neville
Tires	295/80 R22.5LRH Low Profile Highway Radial

Liquid Weight Reference: Water (gal./ltrs.)=(8.3 lbs./3.8 kgs.), Fuel (gal./ltrs.)=(7.1 lbs./3.2 kgs.), LPG (gal./ltrs.)=(4.5 lbs./2.0 kgs.)

Metric Conversion: Multiply pounds x 0.453 to obtain kilograms, Multiply gallons x 3.785 to obtain liters

- (1) GVWR (Gross Vehicle Weight Rating): Means the maximum permissible loading weight of the motor home. GVWR is equal to or greater than the sum of the unloaded vehicle weight plus the net carrying capacity.
- (2) GAWR (Gross Axle Weight Rating): Means the maximum permissible loaded weight a specific axle is designed to carry.
- (3) BW (Base Weight): Means the weight of the motor home without fuel, options, water, cargo or passengers.
- (4) GCWR (Gross Combined Weight Rating): Means the value specified by the motor home manufacturer as the maximum allowable loaded weight of this motor home with its towed vehicle. Towing and braking capacity may differ. Refer to Fleetwood and chassis manufacturer manuals for complete information.
- (5) Length taken from front bumper to rear bumper (excludes accessories).
- (6) Excludes safety equipment and awnings.
- (7) Tank Manufacturer's listed water capacity (WC). Actual LPG capacity is 80% of water listed as required by the safety code.

* The chassis manufacturer recommends the installation of a supplemental brake control system to activate the brakes on the vehicle or trailer you are towing.

IMPORTANT-PLEASE READ: Product information, photography and illustrations included in this publication were as accurate as possible at the time of printing. For further product information and changes, please visit our website at www.fleetwoodrv.com or contact your local Fleetwood dealer. Prices, materials, design and specifications are subject to change without notice. All weights, fuel, liquid capacities and dimensions are approximate. Fleetwood has designed its recreational vehicles to provide a variety of uses for its customers. Each vehicle features optimal seating, sleeping, storage and fluid capacities. The user is responsible for selecting the proper combination of loads (i.e. occupants, equipment, fluids, cargo, etc.) to ensure that the vehicle's capacities are not exceeded.



Blue Illusion



Golden Fern



Copper Oasis



Winter White

S T A N D A R D & O P T I O N A L F E A T U R E S

Automotive

- S Engine - Cummins® C.8.3 Liter, 350 hp ISC Diesel
- S Transmission - Allison® 3000 MH, 6-Speed Automatic
- S Spartan® Mountain Master Chassis
- S Independent Front Suspension
- S Steel Surface on Front Bulkhead/Engine Frame
- S Bus Style 50" Large Windshield
- S Intermittent Wipers
- S Smart Wheel
- S Tilt/Telescoping Steering Wheel
- S Double Swivel Visors
- S Back Lighted Instrument Panel
- S Driver/Passenger Wood Cupholder
- S Slide-Out Battery Tray
- S (4) 6V House Batteries on Slide-out Tray, 440 Amp
- S (2) 12V Chassis Batteries - 2000 CCA
- S Electronic Battery Control Center
- S Undercoating
- S (4) Cast Aluminum Wheels
- S Battery Disconnect Switches
- S Denso Climate Control System
- S Trailer Hitch Receiver 10,000 Lb. Capacity*
- S Cruise Control
- S Auxiliary Start Circuit
- S Auxiliary Fog Lights
- S Michelin Radial Tires
- S Tire Pressure Check Gauge
- S 3-Point Leveling Jacks
- S Flexsteel® Fabric Driver/Passenger Seats
- S w/Manual Lumbar/6-Way Power Driver Seat
- S Sony® Rear Vision System with One-Way Audio
- S Sony® AM/FM Cassette/CD
- S CB Radio Ready
- S Black "Bus-Like" Heated Mirrors with Remote Adjustments
- S Mud Flaps
- S Utility Light - Front & Rear
- S Air Horns
- S I.C.C. Light Switch
- S Driver/Passenger Map Lights
- S Anti-Lock Braking System (ABS)
- S Full Air Brakes with Automatic Slack Adjusters
- S Stepwell Cover
- S Exhaust Brake
- S Architectural Dash with Large Analog Gauges
- S Power Driver Window
- S Manual Air Dump Override Switch
- S Sound Insulation In Subfloors, Front & Rear
- 0 V.I.P. Delivery
- 0 Flexsteel® Leather Driver/Passenger Seats
- 0 w/Manual Lumbar/6-Way Power Driver Seat
- 0 Hand-Held CB
- 0 DSS Automatic Lift
- 0 GPS System

Structural

- S Stacked Rail Chassis Frame
- S Steel Reinforced Vacubond Sidewall, Roof & Floor Construction
- S Steel Outriggers on Chassis
- S Heated Water & Holding Tank Compartments
- S Vacubond Insulated Storage Area
- S Vacubond Walls with Smooth Exterior Skin
- S Bonded Windshield with Frame

Exterior

- S Domed Fiberglass Roof with Radius Corners
- S Exterior Rinse Hose
- S Full Fiberglass Front & Rear Caps
- S Fiberglass Front Fascia
- S Fiberglass Front & Rear Quarter Panels

- S Fiberglass Molded Front Bumper
- S Porch Light
- S Halogen Headlamps
- S 40 Gallon LPG Tank
- S Exterior Graphics (4 Colors)
- S Power Single Entry Step
- S 31" Front Entry Door with Dead Bolt & Pneumatic (Air) Lock
- S Entry Assist Handles
- S Exterior Flip-Up Storage Doors
- S Luggage Compartment Lights
- S Protective Front Cover w/Logo
- S Front & Rear Docking Lights
- S Exterior Convenience Light at Dump Valves
- S Awning/Drip Rail Molding (DS,RS)
- S Dual Pane Windows w/Screens
- S Park Telephone Ready
- S Patio Receptacles
- S San-T-Flush on Black Tank & Gray Tank
- S Holding Tanks with Low Point Drain Valves
- S Gravity Fresh Water Fill
- S Fiberglass Wheel Trims
- 0 Two-Piece Ladder
- 0 Solar Charging Panel
- 0 Keyless Entry
- 0 54" Compartment Slide-Out Storage Tray
- 0 Window Awnings
- 0 Electric Awning - Girard or Care Free One Touch
- 0 Rear Rockguard Mud Flap
- 0 Spotlight

Appliances

- S (2) 13.5 M Low Profile Roof Air Conditioner
- S Onan® 7.5 kw Quiet Diesel Generator
- S Front Slide-out Manual
- S Dual Furnaces w/Thermostat & Auto Ignition, 20M/34M BTU
- S Dometic® 120V/LPG Electric Side-By-Side Refrigerator w/Ice Maker
- S Recessed 3 Burner Range with Oven & Corian® Cover
- S Microwave/Convection Oven w/Built-In Range Hood
- S Water Filter
- S TV Antenna with 2 Jacks
- S Satellite Ready
- S 24" Sony® Vega TV (Front) w/Remote
- S 20" Sony® Vega TV (Rear) w/Remote
- S VHS - VCR (Stereo)
- S Heart Interface® Source Manager 20 - 2000 Watt Continuous Inverter, 100 Amp Converter, Intelligent Transfer Switching
- S Battery Monitor
- S Multi-Point Water Pump Switching
- S Residential China Bowl Toilet with Flush
- S 10 Gallon Water Heater 120V/LPG
- S Smoke Detector/Alarm
- S Fire Extinguisher
- S LPG Leak Detector/Alarm
- S Carbon Monoxide Detector/Alarm
- S 50 Amp Power Cord
- S Rigid Furnace Ducting System
- S Continuous Ducted Ceiling A/C
- S Water Heater By-Pass
- 0 Auto Gen Start
- 0 Washer/Dryer
- 0 Norcold® 120V/LPG 4-Door Refer w/Ice Maker
- 0 Recessed 3 Burner Range with Corian® Cover
- 0 DVD & CD Player
- 0 Theater Sound
- 0 DSS
- 0 Heart Interface® Source Manager 25 - 2500 Watt Continuous Inverter, 130 Amp Converter, Intelligent Transfer Switching
- 0 Rain Sensor Vents

Galley

- S Corian® Sink Covers
- S Corian® Galley Top
- S Extra Large Stainless Steel Kitchen Sink, Double Bowl
- S Moen Single Lever Galley Faucet
- S Ceramic Tile Flooring
- S Wood Refrigerator Door Inserts
- S Corian® Dinette Table with Extension & 4 Chairs
- S 120 Volt Outlet & Telephone Jack at Dinette
- 0 Nuheat Heated Tile Floor

Bath

- S Corian® Lavy Top w/Porcelain Bowl & Moen® Faucet
- S Deluxe Medicine Cabinet
- S Ceramic Tile Flooring
- S Skylight in Tub/Shower
- S Deluxe Fiberglass Shower w/Fold-Down Seat
- S Power Bath Vent
- S Residential Size Sink
- S Glass Shower Door
- S Moen® Hand Held Shower Head
- 0 Obscure Glass in Shower
- 0 Nuheat Heated Tile Floor

Bedroom

- S Restonic® Reversible Pillowtop Mattress
- S w/Soft & Firm Sides
- S 60" x 80" Queen Bed
- S Comforter with (2) Shams & Throw Pillows (2)
- S Day/Night Pleated Shades
- S Corian® Nightstand Tops
- 0 King Bed
- 0 Shirt Wards with Drawers

Interior

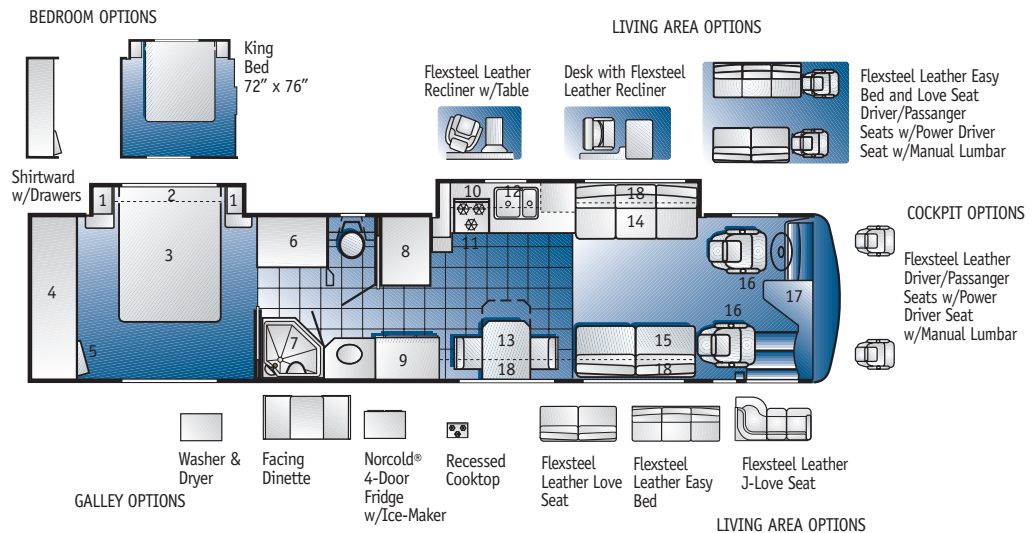
- S TV Antenna
- S TV Cable Ready
- S Monitor Panel
- S Alpine Oak Cabinetry
- S Solid Wood Drawers
- S Solid Core Raised Panel Upper Cabinet Doors
- S Non Skid Cabinet Shelves
- S Brass Accessories
- S Beveled Glass Mirrors
- S Cedar-Lined Wardrobe
- S Wardrobe Light
- S 16 Custom Decors
- S Wall-To-Wall Carpet (Bedroom & Living Areas)
- S Valances with Lambrequins Throughout
- S Windshield Drape Track System
- S Mini-Blinds in Living Room
- S Sofa Pillows (2)
- S Fabric Decor Headboard
- S Roller Guide Drawer Slides with Ship Locks
- S Indirect Fluorescent Decor Lighting
- S Fabric Living Room Furniture by Flexsteel
- S Entry Step Switch at Entry Wall
- 0 Day/Night Pleated Shades (Living Area & Dinette)
- 0 Flexsteel Leather Furniture
- 0 Walnut, Cherry or Clear White Maple Cabinetry
- 0 Wood TV Overhead

*The chassis manufacturer recommends the installation of a supplemental brake control system to activate the brakes on the vehicle or trailer you are towing.

2002 AMERICAN TRADITION® Floor Plans

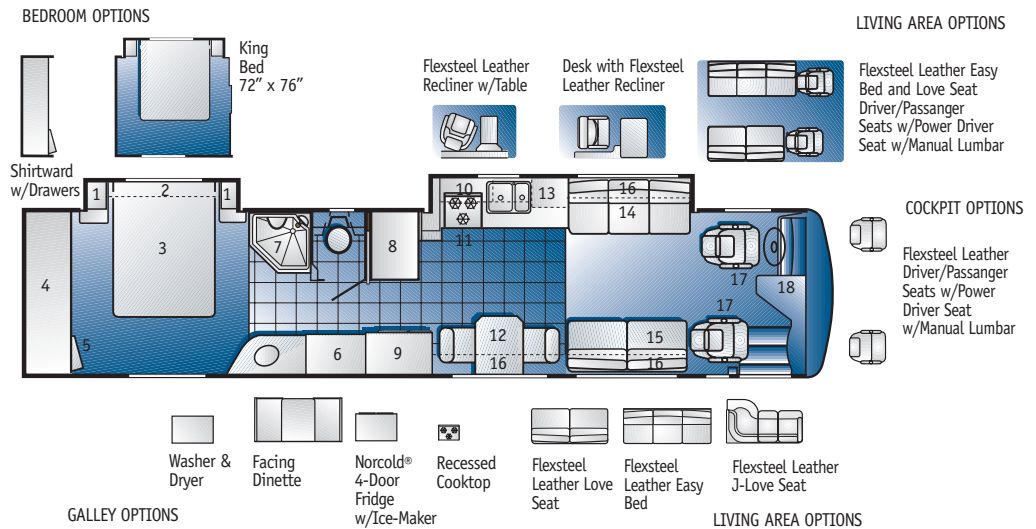
40H Standard Features

1. Nightstand
2. Speaker Sofit with Lighting
3. Queen Bed 60" x 80"
4. Rear Wardrobe
5. 20" Rear TV
6. Linen Closet
7. Shower
8. Pantry
9. Side-By-Side Refer. w/Icemaker
10. Microwave
11. 3 Burner Range
12. Galley Overhead
13. Table w/Flexsteel Fabric Chairs
14. Flexsteel Fabric Sofa Bed
15. Flexsteel Fabric Love seat
16. Flexsteel Leather Driver/Passenger Seats
17. 24" Front TV in Overhead
18. Overhead Storage



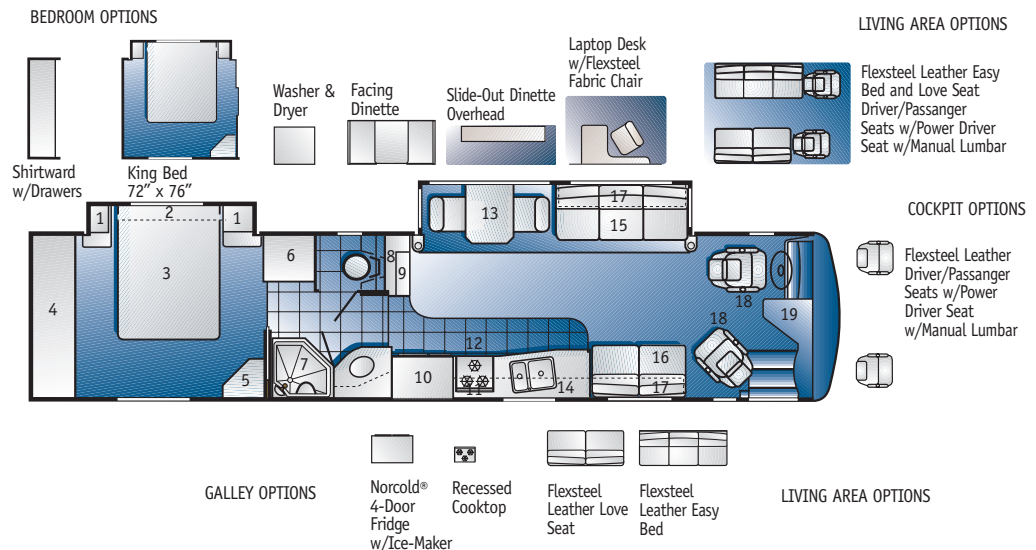
40K Standard Features

1. Nightstand
2. Speaker Sofit with Lighting
3. Queen Bed 60" x 80"
4. Rear Wardrobe
5. 20" Rear TV
6. Linen Closet
7. Shower
8. Pantry
9. Side-By-Side Refer. w/Icemaker
10. Microwave
11. 3 Burner Range
12. Table w/Flexsteel Fabric Chairs
13. Galley Overhead
14. Flexsteel Fabric Sofa Bed
15. Flexsteel Fabric Love Seat
16. Overhead Storage
17. Flexsteel Leather Driver/Passenger Seats
18. 24" Front TV in Overhead



40M Standard Features

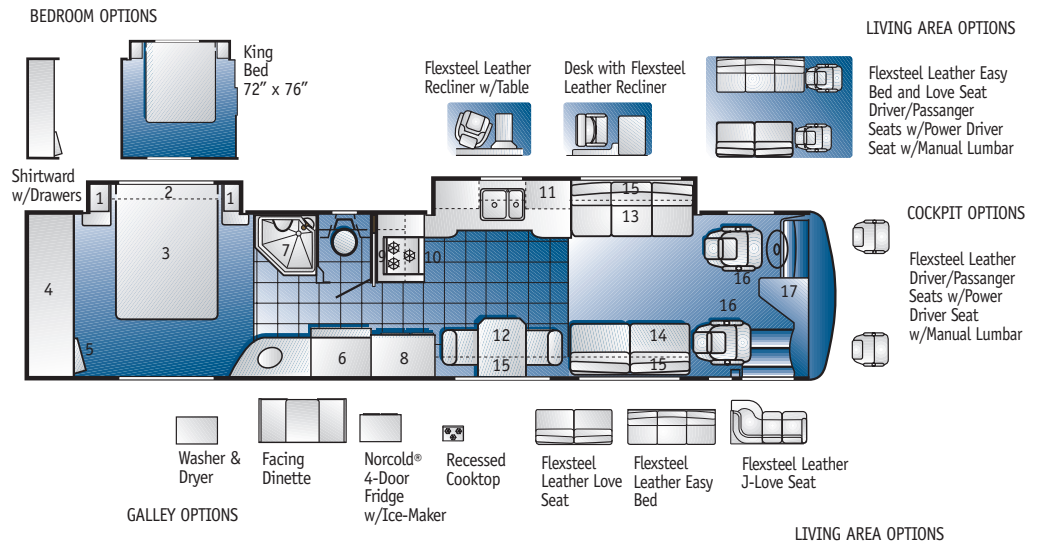
1. Nightstand w/Overhead
2. Speaker Sofit with Lighting
3. Queen Bed 60" x 80"
4. Rear Wardrobe
5. 20" Rear TV
6. Linen w/Drawer & Hamper Rollouts
7. Shower
8. Bath Linen
9. Pantry
10. Side-By-Side Ref. w/Icemaker
11. Microwave
12. 3 Burner Range
13. Table w/Flexsteel Fabric Chairs
14. Galley Overhead
15. Flexsteel Fabric Sofa Bed
16. Flexsteel Fabric Love Seat
17. Overhead Storage
18. Flexsteel Leather Driver/Passenger Seats
19. 24" Front TV in Overhead



2002 AMERICAN TRADITION® Floor Plans

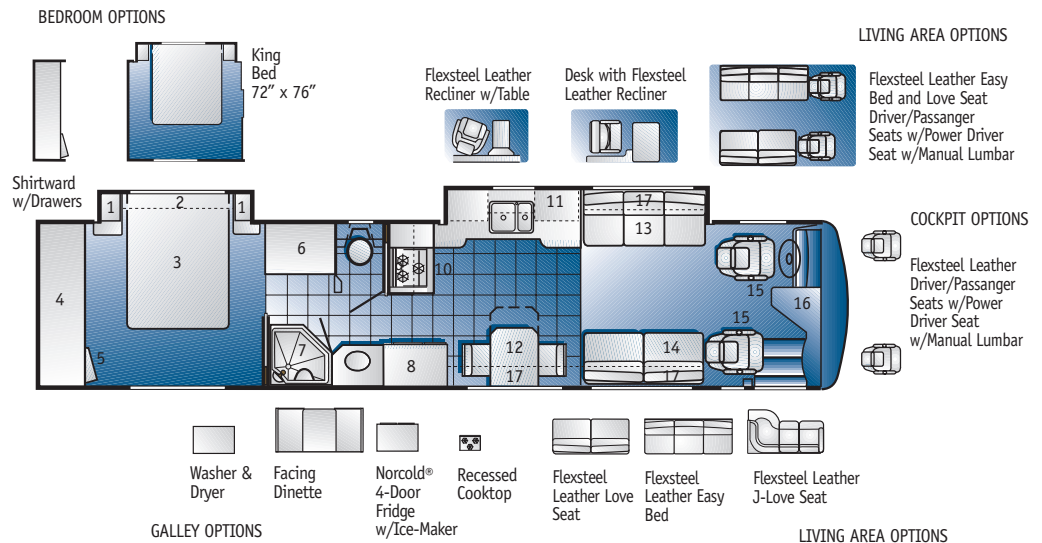
40Q Standard Features


1. Nightstand
2. Speaker Soffit with Lighting
3. Queen Bed 60" x 80"
4. Rear Wardrobe
5. 20" Rear TV
6. Linen Closet
7. Shower
8. Side-By-Side Refer. w/Icemaker
9. Microwave
10. 3 Burner Range
11. Galley Overhead
12. Table w/Flexsteel Fabric Chairs
13. Flexsteel Fabric Sofa Bed
14. Flexsteel Fabric Love seat
15. Overhead Storage
16. Flexsteel Leather Driver/Passenger Seats
17. 24" Front TV in Overhead



40U Standard Features

1. Nightstand
2. Speaker Soffit with Lighting
3. Queen Bed 60" x 80"
4. Rear Wardrobe
5. 20" Rear TV
6. Linen Closet
7. Shower
8. Side-By-Side Refer. w/Icemaker
9. Microwave
10. 3 Burner Range
11. Galley Overhead
12. Table w/Flexsteel Fabric Chairs
13. Flexsteel Fabric Sofa Bed
14. Flexsteel Fabric Love seat
15. Flexsteel Leather Driver/Passenger Seats
16. 24" Front TV in Overhead
17. Overhead Storage





On the surface, Vince Lombardi is simply the name of one of the greatest football coaches of all time. In football folklore, however, the name Lombardi is synonymous with all the qualities and characteristics required to become a winner. Intangibles such as dedication, pride and a winning attitude.

At American Coach, we adopted the Lombardi style and philosophy, and made it our game plan for the future. Coach Lombardi loved what he did for a living. So do we. You'll see it reflected in all our people. All our products. And, everything we do.

You'll even witness it, firsthand, at the team rallies as a new American Coach owner. Because you are the most important member of our winning team. Without you, the game is lost. That's why you can rest assured we'll do everything in our power to keep you in uniform and on our playing field.

We invite you now to experience the thrill of victory, the pride of ownership and the genuine sense of belonging you'll discover as an American Coach owner. Welcome to the team. Welcome to American Coach.



*Fleetwood Motorhomes of Indiana, Inc. • Plant #44 • 1031 U.S. 224 East • Decatur, Indiana 46733-5006
(219) 728-2121 (800) 648-6582*

FLEETWOOD RV
www.fleetwoodrv.com