



**DYNAMAX**  
CORPORATION

**DYNAQUEST ST**



## DYNAQUEST - DQ260ST & 264ST

### STEP UP TO POWER, PERFORMANCE AND PRECISION

Head turning DynaQuest ST Class C Motorhomes are built on the rugged Freightliner® M2 chassis powered by the Cummins ISB 6.7L 325-horsepower diesel engine, with an impressive 750 lb./ft. of torque at 1,200 RPM. The streamlined front end tames head and cross winds to make driving a breeze. Sized right for agile maneuvering, these ST "go anywhere" floorplans take the hassle out of parking. The whole package delivers excellent accommodations, amenities, and conveniences with a driving experience unmatched in the industry. If your travel needs require spacious, full-time sleeping quarters, a convenient, well-equipped kitchen with impeccably appointed dining and living quarters, the DynaQuest ST is an excellent choice.



The DQ260ST's living area feels spacious and open, making it hard to believe it's a smaller coach. The sofa transforms into a comfortable queen size air mattress bed.

The DQ264ST also offers the convenience of a permanent double corner bed that's perfect for an afternoon nap. With an optional queen size Hide-A-Bed sofa, this well planned coach provides two exceptional sleeping areas.



**RUSSET RIDGE/NATURAL CHERRY**



*DynaQuest 260ST's full kitchen is loaded with standard features including a 10 cu. ft. stainless steel refrigerator, standard huge pantry storage and a comfortable dinette that converts to a sleeping area.*

*Stretch out and relax in this spacious rear corner double bed in DynaQuest 264ST.*

**BRIARWOOD/NATURAL CHERRY**



*The warm, inviting U-shaped dinette, with a deluxe matching Ultraleather folding chair, seats four comfortably and folds out for extra sleeping room. Optional on the DQ264ST, DQ300ST and DQ302ST.*

**MOCHA/NATURAL CHERRY**







## DYNAQUEST - DQ275ST

### ON THE ROAD WITH THE ULTIMATE TAILGATING VEHICLE.

Take in the stunning, head turning appeal of the versatile DQ275ST. Up to nine people can load up for fun, while traveling in the lap of luxury. Socialize in style with the DQ275ST's premium audio and video entertainment package. Dynamax combines our legendary curb appeal and maneuverability through aerodynamic RV engineering to deliver a midsize motorhome that leaves other comparable Class C RVs in the dust.



*Pack for adventure. DynaQuest ST's spacious 17-cu. ft. lighted rear trunk and powder coated steel side compartments with lockable aluminum insulated doors provide outstanding storage capacity for your gear. Includes 12-Volt and 110-Volt receptacles.*



*Travel and park easily at soccer games, tailgate events, boating, antiquing, horse shows or car races. In fact, it goes just about anywhere you can think of. The standard jack knife sofa folds-out, creating an added sleeping area.*



*This DynaQuest 275ST is well-appointed, with all of the amenities found in a much larger motorhome. With seating for nine, plenty of storage (including a pull-out cooler under the dinette), and a deluxe bathroom, its suite-like interior is perfectly suited for entertaining.*



**RUSSET RIDGE/STAINED CHERRY**



*The convenient wet bath features a toilet, sink and a shower with a skylight.*

*This side dinette easily converts into a comfortable sleeping area. DynaQuest 275ST shown.*



**RUSSET RIDGE/STAINED CHERRY**





MOCHA

## DYNAQUEST - DQ300ST & 302ST

### STAY OVER IN STYLE.

Family and friends will appreciate the DynaQuest DQ300ST and DQ302ST's well-appointed private sleeping quarters. These larger coaches offer plenty of additional storage space and luxury conveniences. When you option the Ultraleather Hide-A-Bed, these DynaQuest STs sleep four comfortably. The DQ300ST and DQ302ST offer the premium amenities of a larger Class A in a smaller, more maneuverable package that's a pleasure to drive.







DynaQuest ST offers incredible performance and extraordinary styling. The Cummins ISB, 6.7L diesel engine dishes out 750 lb./ft. of torque at 1,200 RPM. Beautiful Ultraleather upholstery, premium quality nylon-sculpted carpeting and rich, hardwood cabinetry and flooring set the tone in style. Add unrestricted maneuverability and you've got the perfect package.

The DQ302ST offers comfy 32-inch x 76-inch twin beds. Each features a spacious hardwood shirt wardrobe and nightstand.

The DQ302ST's large, airy living area features an Ultraleather sofa. Standard amenities include, luxurious hardwood flooring in the kitchen and bath, and deluxe sculpted carpet in the living room and bedroom.



RUSSET RIDGE/STAINED CHERRY

*This convenient kitchen features Corian® countertops with an integrated sink and single handle pull-out faucet, a gas two-burner cooktop, an over the range convection microwave and generous slide-out pantry.*



RUSSET RIDGE/NATURAL CHERRY

*DynaQuest 302ST's rear bathroom has a mirrored hardwood medicine cabinet over the vanity, a Corian® countertop with an integrated sink and generous closet storage. A one-piece shower with a skylight lets the sunshine in.*

RUSSET RIDGE/STAINED CHERRY





# EXTERIOR FEATURES



ONYX



RUSSET RIDGE



MOCHA



BRIARWOOD



QUICK SILVER



STONEY RIDGE

## CONTEMPORARY PAINT PACKAGES

DynaQuest ST Series offers six eye-catching full-body paint packages. All feature dramatic, contemporary automotive base coat/clear coat technology.



## Contemporary cockpit.

*The professional cockpit is designed with lots of leg room. DynaQuest ST includes power windows, cruise control, tilt and telescoping steering column, tinted glass and overhead reading lamps. Many drivers option the sophisticated GPS navigation system.*



## Hydraulic leveling jacks.

*Level your DynaQuest ST quickly, safely and easily with four standard semi-automatic leveling jacks.*



## Lockable storage for all your gear.

*DynaQuest ST has lots of cargo space inside and out – with a spacious 17 cubic foot trunk and generous lighted side compartments.*



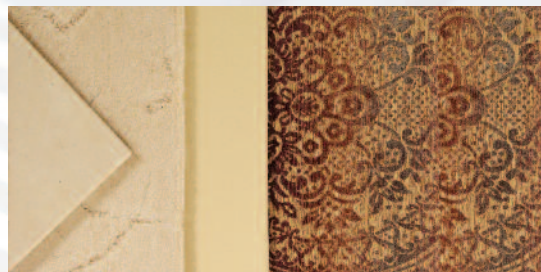
# INTERIOR FEATURES

## ELEGANT INTERIOR DESIGN SCHEMES

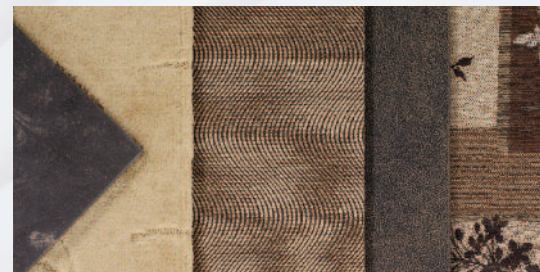
DynaQuest ST offers a beautiful variety of carpeting, solid wood cabinetry, fabric, hardwood style flooring and upholstery design combinations. Pick and choose the one that best fits your lifestyle.



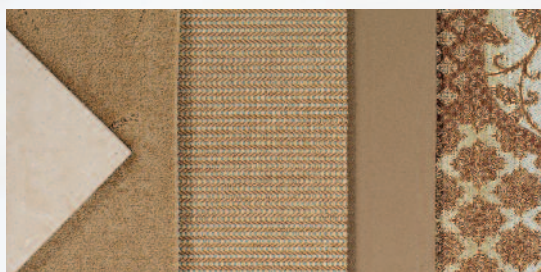
ONYX



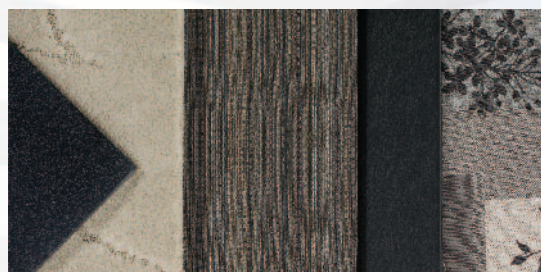
RUSSET RIDGE



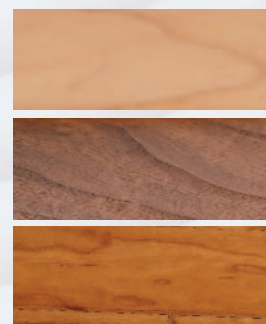
MOCHA



BRIARWOOD



QUICKSILVER



## CABINETS

NATURAL MAPLE

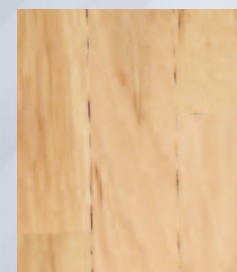
STAINED CHERRY

NATURAL CHERRY

## FLOORING

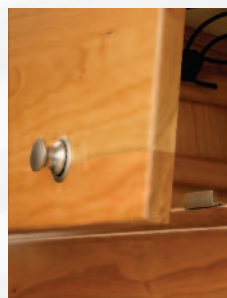


CHERRY



MAPLE

**Beautiful laminate hardwood floors** in warm maple or cherry are a standard feature in the DynaQuest ST.



**High quality optional Hide-A-Bed sofa.** This inviting sofa transforms into a comfortable queen size air mattress bed.

**Posi-Lock hardware** on cabinets and drawers creates a positive lock to secure doors or drawers when the motorhome is in motion.

**Advanced 26-inch flat LCD screen TV** offers the finest in television picture quality. See your favorite movies and popular TV shows like you've never seen them before.

**Incredibly sophisticated interior integration.** Stylish, sculpted interior transitions are designed with compartments to house electronic components efficiently. Framed in natural Cherry hardwood, compartments contain a standard AM/FM/CD/DVD Surroundsound system with a satellite receiver.

**Standard color backup camera.** The color back-up camera is available with optional side view cameras for enhanced safety and security.



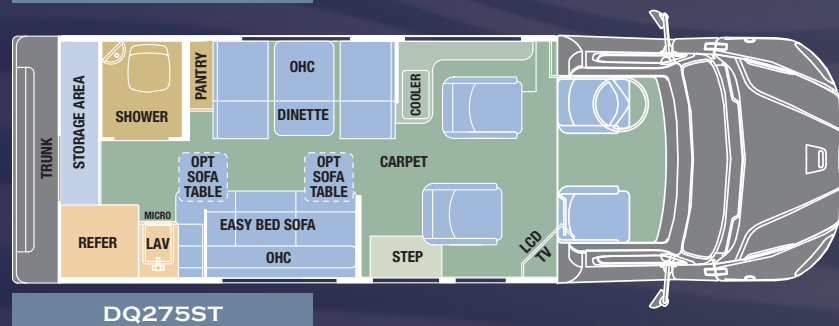
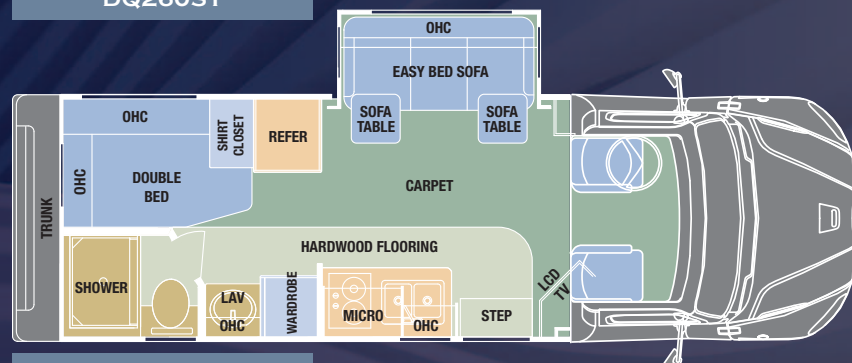
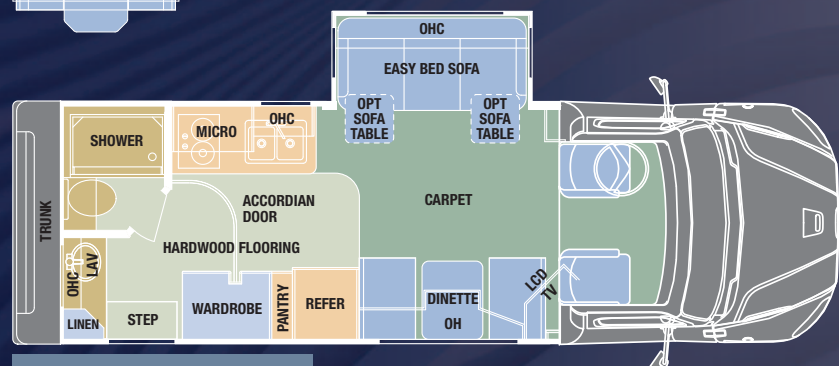


# DYNAQUEST ST - FLOORPLANS

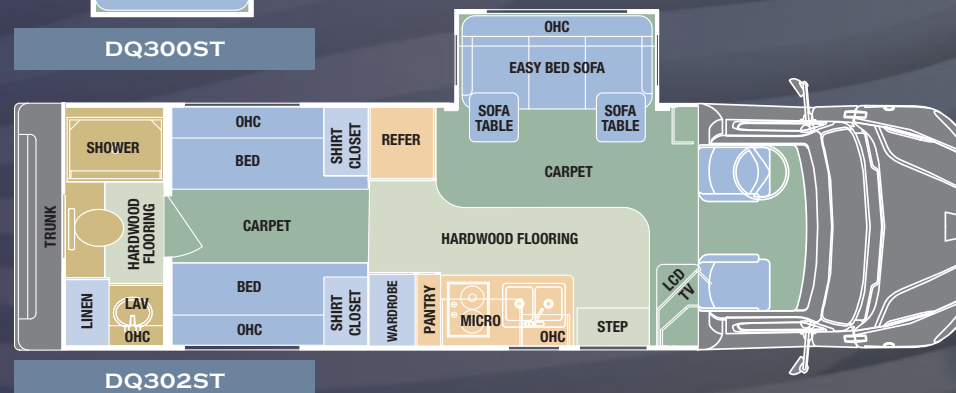
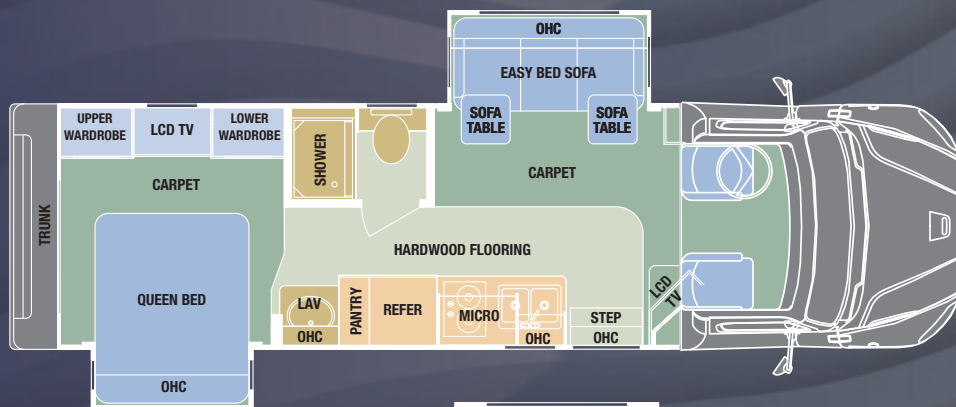
Stylized living space is more than colors, fabrics and furnishings. Floorplans thoughtfully designed to enhance ease of movement, give a feeling of roomy comfort and convenience. DynaQuest ST offers a choice of five luxurious arrangements.



*U-shaped dinette is available on Models DQ264ST, DQ300ST and DQ302ST*



KEY DIMENSIONS	DQ260ST	DQ264ST	DQ275ST	DQ300ST	DQ302ST
<b>GVWR:</b>	26,000 lb.	26,000 lb.	26,000 lb.	26,000 lb.	26,000 lb.
<b>GCWR:</b>	54,000 lb.	54,000 lb.	54,000 lb.	54,000 lb.	54,000 lb.
<b>OVERALL LENGTH:</b>	27' 5"	27' 5"	27' 5"	31' 1"	31' 1"
<b>EXTERIOR WIDTH:</b>	8' 5"	8' 5"	8' 5"	8' 5"	8' 5"
<b>WHEELBASE:</b>	190"	190"	190"	212"	212"
<b>OVERALL EXTERIOR HEIGHT:</b> (includes standard 13,500-BTU roof air conditioner and/or dome)	11'	11'	11'	11'	11'
<b>INTERIOR HEIGHT:</b>	6' 6"	6' 6"	6' 6"	6' 6"	6' 6"
<b>FUEL CAPACITY:</b>	100 gal.	100 gal.	100 gal.	100 gal.	100 gal.
<b>WATER CAPACITIES:</b>					
Fresh	36 gal.	36 gal.	33 gal.	36 gal.	36 gal.
Grey	36 gal.	36 gal.	36 gal.	36 gal.	36 gal.
Black	33 gal.	33 gal.	33 gal.	33 gal.	33 gal.
<b>LPG CAPACITY:</b>	20.3 gal./68 lb.	20.3 gal./68 lb.	20.3 gal./68 lb.	20.3 gal./68 lb.	20.3 gal./68 lb.





## CHASSIS TYPE

- 2011 Freightliner M-2, GVWR: 26,000 lbs.

## CHASSIS FEATURES

- Engine: Cummins ISB, 6.7L Diesel
- 2010 EPA/CARB Emission Certification
- 325 Horsepower @ 2,300 RPM
- 750 lb.ft. of Torque @ 1,200 RPM
- 2,600 RPM Governed
- 275 Amp Alternator
- 2 Alliance Model 1131, Group 31, 12-Volt Maintenance Free Batteries with 1,850 CCA
- Chassis Battery Shut Off Switch in Cab (Mounted by driver's seat)
- Cummins 18.7 CFM Air Compressor
- Cummins Exhaust Brake Integral with Variable Geometry Turbo
- Engine After Treatment Device, Automatic Over the Road Regeneration & Dash Mounted Regeneration Request Switch
- 6 Gallon Diesel Exhaust Fluid Tank
- 950 Square Inch Aluminum Radiator
- 750 Watt/115-Volt Block Heater
- Allison 3,200 TRV 6-Speed Automatic
- Push Button Electronic Shift Control, Dash Mounted
- Transmission Electronic Oil Level Check
- 10,000 lb. Front Axle
- Cast Iron Front Brake Drums
- Power Steering
- 2 Quart See Through Power Steering Reservoir
- 10,000 lb. Taperleaf Front Suspension
- 19,000 lb. Quiet Ride Single Rear Axle
- 4.30 Rear Axle Ratio
- Cast Iron Rear Brake Drums
- Airliner 18,000 Rear Suspension
- Dual Instant Response Rear Suspension Leveling Valves
- Air Brakes with 4 Wheel ABS
- Brake Line Air Dryer, Heater & Integral Reservoir
- Auto Drain Valve on all Tanks
- Quick Disconnect Fitting with Tire Inflation Kit
- 9/32" x 3-7/16" x 10-1/16" Steel Frame
- Left & Right Hand 50 Gallon Rectangular Aluminum Fuel Tanks - 100 Gallon Fuel Capacity
- Fuel Filter/Water Separator with Primer Pump
- Auxiliary Fuel Supply & Return Ports (Generator)
- Front Tires: 265/70R19.5 (14 Ply Radials)
- Rear Tires: 245/70R19.5 (14 Ply Radials)
- Accuride 19.5 x 7.50 Polished Aluminum Front Wheels
- Accuride 19.5 x 7.50 Polished Aluminum Rear Wheels (Note: Only outside rear rims are polished)

## CAB EXTERIOR

- Aluminum Cab
- Rubber Mounted
- Chrome Grille

- Chromed Air Intake Grille
- Rectangular Amber Fog Lights
- Daytime Running Lights
- Chrome Heated & Remote Mirrors with 8" Convex Mirrors Mounted Under Primary Mirrors
- Tinted Door Glass with Tinted Operating Wing Windows
- Electric Powered Windows
- 2 Gallon Windshield Washer Reservoir

## CAB INTERIOR

- Gray Vinyl Interior
- Dash Mounted Ash Tray & Lighter
- Alarm Clock in Dash
- 2 Cup Holders in Dash
- Dash Air Conditioning
- Dual Reading Lights
- Electric Door Locks
- Driver & Passenger Air Suspension Seat Pedestals
- Driver & Passenger Seats Swivels
- 3 Point Driver & Passenger Seat Belts
- 18" Leather Wrapped Steering Wheel

## CONTROLS & INSTRUMENTS

- Tilt & Telescoping Steering Column
- Wood Grain Instrument Panels
- Low Air Pressure Light & Buzzer
- Primary & Secondary Air Pressure Gauges
- Electronic Cruise Control
- Digital Display of Odometer, Trip Odometer, Engine Hour, Voltage & Diagnostics
- 2' Electric Fuel Gauge (Reads drivers side fuel tank only)
- Transmission Oil Temperature Gauge
- Oil Pressure Gauge
- Multi Band AM/FM/WB/CB Left Hand Mirror Mounted Antenna
- Speedometer
- Electronic 3,000 RPM Tachometer
- Windshield Wipers with Delay
- Marker Lights with Separate Interrupter Switch
- One Valve Parking Brake System with Warning Indicator
- Two Year/Unlimited Mileage Extended/Roadside Service Warranty

## EXTERIOR FEATURES

- Paint:
  - Option # 1 - Mocha (Tan)
  - Option # 2 - Briarwood (Taupe)
  - Option # 3 - Quick Silver (Silver & Black)
  - Option # 4 - Russet Ridge (Burgundy)
  - Option # 5 - Onyx (Gold & Black)
  - Option # 6 - Stoney Ridge (Silver & Grey)
- Four Point Semi-Automatic Leveling Jacks (Standard)
- Four Point Fully-Automatic Leveling Jacks (Optional)
- 7,500 lb. Hitch Capacity (Standard)
- 10,000 lb. Hitch Capacity (Optional)

- 7-Way Flat Pin Tow Connection (Optional)
- Brake Controller - Includes 7-Way Flat Pin Tow Connection (Optional)
- Care Free Box Awning (Standard)
- Girard Power Awning with Remote & Wind Sensor (Optional)
- Lighted Grab Handle at Entry Door
- Power Step at Entry Door
- Exterior Storage Compartments:
  - Aluminum Compartment Doors
  - E-Coated Steel Compartment Boxes
  - Lights in Compartments
  - Tank Covers with Rotating Fuel Doors
- Lighted Rear Trunk with 12-Volt & 110-Volt Receptacle
- 2 Docking Lights in Rear Bumper
- Exterior Mounted LP Gas Grill (Optional)

## INTERIOR FEATURES:

- Interior Decors:
  - Option # 1 - Mocha (Tan)
  - Option # 2 - Briarwood (Taupe)
  - Option # 3 - Quick Silver (Silver & Black)
  - Option # 4 - Russet Ridge (Burgundy)
  - Option # 5 - Onyx (Gold & Black)
- Deluxe Sculpted Carpet (Living Room & Bedroom)
- Hardwood Flooring (Kitchen & Bath)
- Ceramic Tile (Optional Kitchen & Bath)
- Cabinets: Hardwood
  - Option # 1 - Natural Cherry
  - Option # 2 - Stained Cherry
  - Option # 3 - Natural Maple
- Deluxe Hidden Cabinet Door Hinges
- Posi - Lock Latches on Cabinet Doors
- 26" LED LCD TV in Living Area
- Satellite: Fully Automatic (Standard)
- Satellite: In-Motion (Optional)
- Intellitec Multiplex Lighting System
  - Multi-point Switching
  - "All Off" Feature in 3 Locations: driver & passenger compartment, entry door, bedroom (Allows the user to completely shut down all 12-Volt lighting by pressing one button)
- Flush Mounted Halogen Ceiling Lights
- Floor Lighting Throughout
- Sony Blu-Ray Home Theatre AM/FM/CD/DVD Surround Sound System (Standard)
- Sony Home Share System (Optional)
- Ceiling Material: Deluxe Padded Ceiling
- Interior Wall Material: Décor Wallboard
- Day/Night Pleated Shades
- Matched Fabric Lambrequins
- Comfort Lounge (Standard)
- Hide-A-Bed Sofa with Air Mattress (Optional) (Standard on DQ260ST)

- U-Shaped Booth Dinette (Optional in place of the Sofa on Models DQ264ST, DQ300ST & DQ302ST)
- Hardwood Sofa Table (Optional) (Standard on DQ260ST, not available on DQ275ST)
- Fantastic Fan Roof Vents

## SAFETY FEATURES

- LP Gas Leak Detector
- 12-Volt Carbon Monoxide Detector
- Smoke Detector
- Fire Extinguisher

## KITCHEN FEATURES

- Corian Countertop with Integrated Double Bowl Sink & Sink Covers (Single Bowl Sink on DQ275ST)
- Single Handle Faucet with Pull-out Spray Head
- Two Burner LP Gas Stove Top
- Over the Range Convection Microwave (N/A on DQ275ST)
- Norcold 10 cu. ft. Stainless Steel Refrigerator
- Norcold 10 cu. ft. Stainless Steel Refrigerator with Ice Maker (Optional)
- Front & Rear Facing Dinette with Inner Sprung Seating & "Dream Dinette" with Hardwood Table Top (DQ260ST & DQ275ST)
- 120-Volt Receptacle
- Hardwood Flooring (Standard)
- Ceramic Tile Flooring (Optional)

## BATHROOM FEATURES

- Corian Lavatory Top with Integrated Sink
- Hardwood Flooring (Standard)
- Ceramic Tile Flooring (Optional)
- Deluxe Hardwood Medicine Cabinet
- One Piece Fiberglass Shower with Skylight
- China Toilet
- Fantastic Vent Fan

## BEDROOM FEATURES

- 22" LED LCD TV (Optional)
- Sony S-Air with Bedroom Remote (Optional)
- Deluxe Sculpted Carpet Flooring
- Hardwood Wardrobes
- Designer Bedspread & Pillow Shams
- Fantastic Vent Fan

## DRIVER & PASSENGER COMPARTMENT

- Color Back Up Camera
- Two Side View Cameras (Optional)
- GPS Navigation System (Optional)
- Driver & Passenger - Ultra Leather Captain's Chairs
- AM/FM/CD Radio System
- CB Radio (Optional)
- Roof Mounted Dual Air Horns

## CONSTRUCTION HIGHLIGHTS

- Heavy Duty 3"E - Coated Steel Floor Frame Mounted on Rubber Isolators
- Radiused & Laminated Side Walls
- Square Tube Aluminum Framed Sidewalls with all thru Wall Cut Outs Framed in Aluminum
- Panoramic Bonded & Dark Tinted Windows
- One Piece Radiused & Laminated Roof
- Square Tube Aluminum Framed Roof
- One Piece Outer Fiberglass Roof Skin
- R-11 Solid Block Foam Insulation in Floor
- R-8 Solid Block Foam Insulation in Sidewalls & Roof
- Steel Cage Connecting Cab to Sidewalls & Roof
- Aerodynamic Front Fiberglass Cab Transition
- Molded Fiberglass Rear Cap with Trunk
- Hydraulic Slide Out (Living Room)
- Electric Slide Out (Bedroom)
- Side Cross Flow Vent Windows (Bedroom)

## UTILITIES

### Heating

- 30,000 BTU LP Gas Furnace (DQ260ST, DQ264ST & DQ275ST)
- 42,000 BTU LP Gas Furnace (DQ300ST & DQ302ST)
- Single Thermostat for Heating & Cooling

### Electrical

- Three Group 27 AGM, 276 Amp Hour Coach Batteries
- 1,000 Watt Inverter (Standard)
- 3,000 Watt Inverter (Optional)
- 50 Amp Land Line
- 6.0 KW Onan Generator (Standard)
- Auto Generator Start (Optional - Requires Upgrade to 3,000 Watt Inverter Option)
- Coach Battery Disconnect in Living Area

### Cooling

- Single 13,500 BTU Low Profile Roof Air Conditioner with Heat Strip - (DQ260ST, DQ264ST & DQ275ST)
- Dual 13,500 BTU Low Profile Roof Air Conditioners with Heat Strip (DQ300ST & DQ302ST)
- 15,000 BTU Low Profile Roof Air Conditioner with Heat Pump (Optional)

### Plumbing & Water System:

- Six Gallon LP Gas Water Heater
- Six Gallon LP Gas & Electric Water Heater (Optional)
- 12-Volt High Capacity Water Pump
- Heat Pads on Grey & Black Water Tanks

## ADDITIONAL OPTIONAL EQUIPMENT:

- Exterior Park Cable Hook-up
- Fantastic Vent (1) Thermostat/Rain Sensor (DQ260ST, DQ264ST & DQ275ST Only)
- Fantastic Vent (2) Thermostat/Rain Sensor (DQ300ST & DQ302ST)
- Window Awnings
- CD Changer with RF Modulator



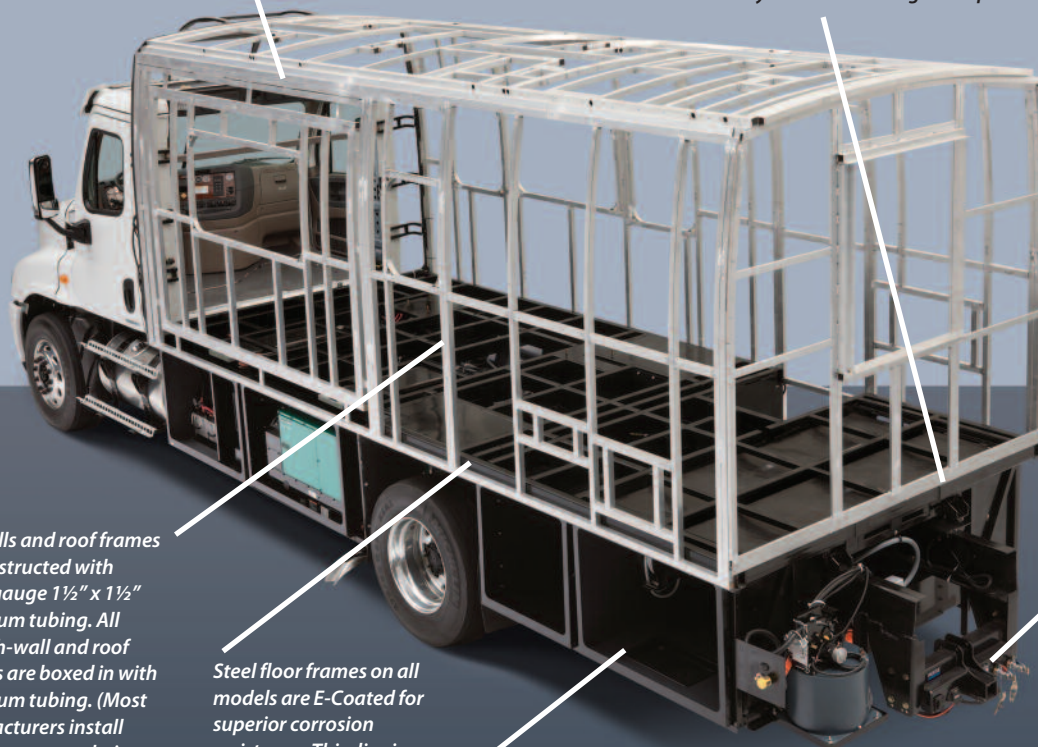


## DURABLE BY DESIGN

Getting you on the road for a worry free experience is what it's all about. We build on a "million mile" chassis and back it up with the best warranties in the business.

*All slide out walls are welded and laminated within the sidewall to insure that the contour is the consistent.*

*Steel floor frames are mounted on urethane isolators to dampen chassis noise and vibration. These Isolators also allow the cab and the motorhome body to move as a single complete assembly.*



*Sidewalls and roof frames are constructed with heavy gauge 1½" x 1½" aluminum tubing. All through-wall and roof cut outs are boxed in with aluminum tubing. (Most manufacturers install wood to rout out their openings; wood has a tendency to rot over time.)*

*Steel floor frames on all models are E-Coated for superior corrosion resistance. This dipping process coats both the inside and outside of the steel tubes.*

*Exterior storage compartments are powder coated, inside and out, to inhibit corrosion.*

*Dynamax installs commercial grade hitches with tow ratings of 7,500, and 10,000 lbs.*



"My DynaQuest 264ST has taken me places most RVs can't go; places most RV owners never dream that their RVs might take them."

— **BOB CHANDLER**  
CEO, BIGFOOT 4X4 INC.



**DYNAMAX**  
CORPORATION  
WE'RE PERFORMANCE DRIVEN

2745 Northland Dr • P.O. Box 1948 • Elkhart IN 46515 • 888-295-7859 • [www.dynamaxcorp.com](http://www.dynamaxcorp.com)

Actual towing capacity is dependent on your particular loading and towing circumstances, which includes GVWR, GAWR and GCWR, as well as adequate trailer brakes. Please refer to the Owners Manual of your vehicle for further information. Floor plans, features and specifications of the DynaQuest ST are subject to change without notice. 11/10/2M, ©2010 Dynamax Corp.