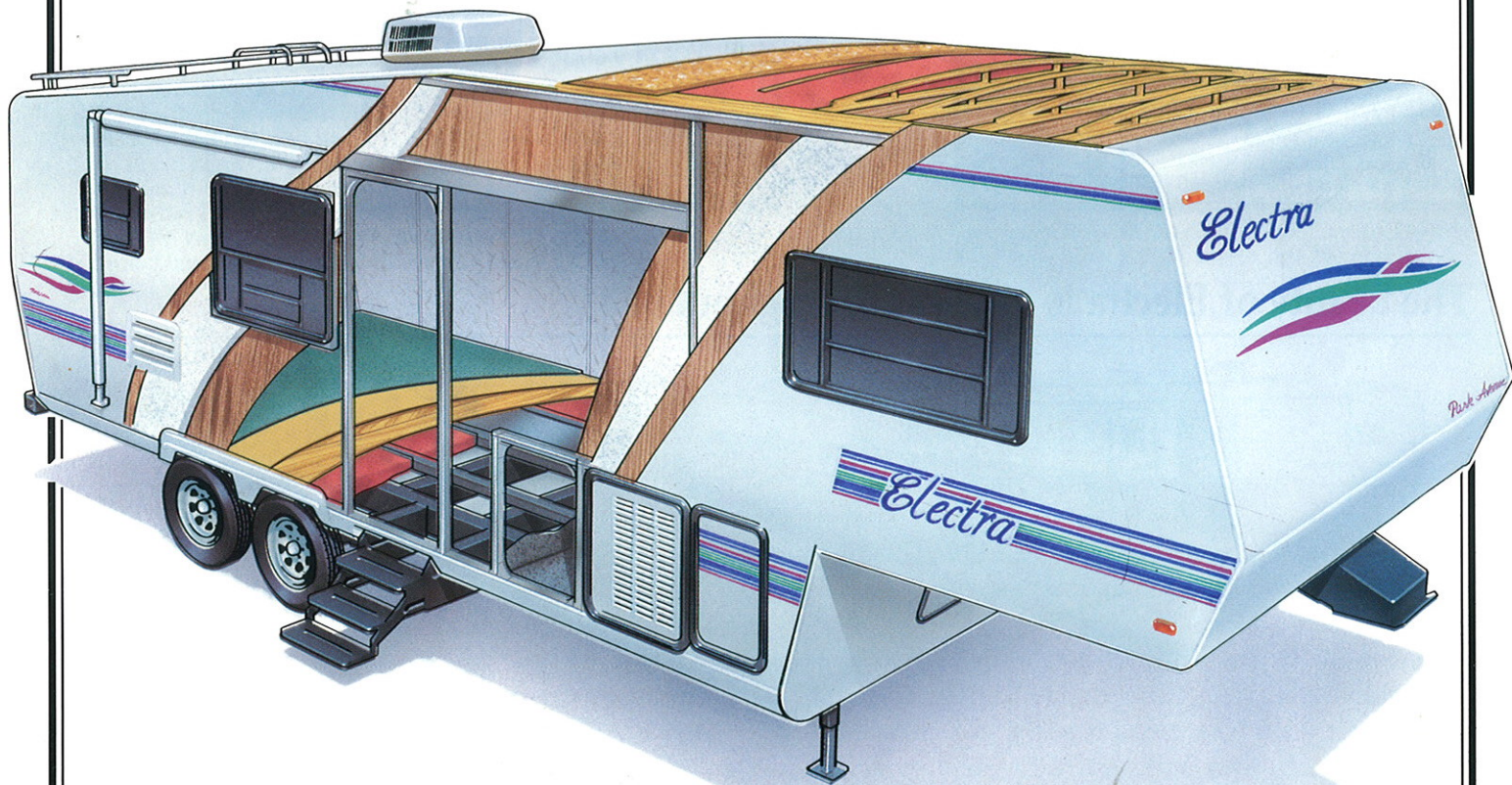


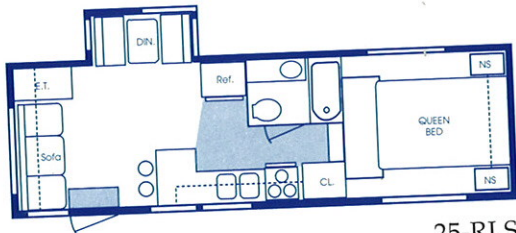
WHEN BEAUTY
IS MORE THAN
SKIN DEEP..

95
96

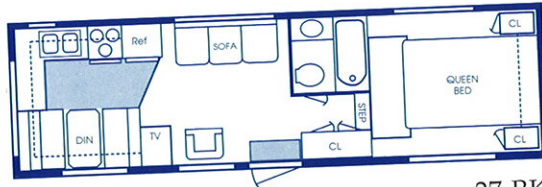


IT'S ELECTRA.

Electra Floor Plans



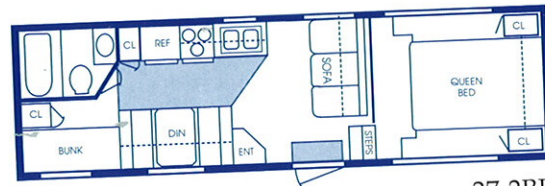
25-RLS



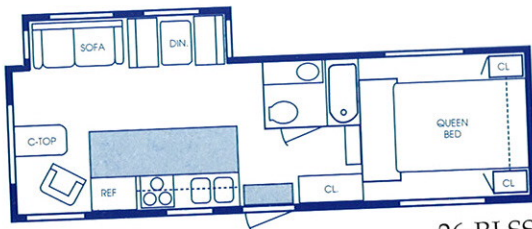
27-RK



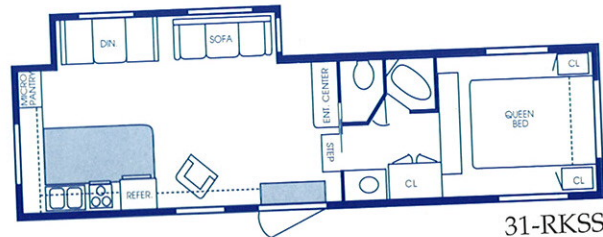
26-RKSS



27-2BF



26-RLSS



31-RKSS

The beauty of Electra is obvious throughout.



To be an innovator it is often times necessary to buck conventional wisdom.

Previous to Electra's introduction of the welded aluminum frame, the construction of 5th Wheels and Travel Trailers has been wood-based. We've changed all that... our total aluminum construction reduces weight for efficient towing, increases strength, eliminates warping and of course, the frame will not rot. In addition to the obvious benefits of aluminum construction, superior manufacturing techniques adds peace of mind. We have taken an extremely unique approach to manufacture the finest 5th Wheels and Travel Trailers on the road today. Where most manufacturers use staples in their construction we use screws: where others use 1/2" standard sheet-cut plywood we use 5/8" tongue and groove decking. By

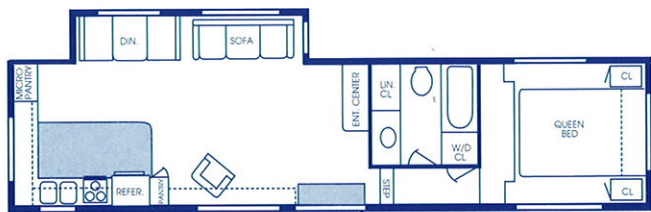


going the extra distance with quality materials and top-notch construction techniques, the Electra product is solid value.

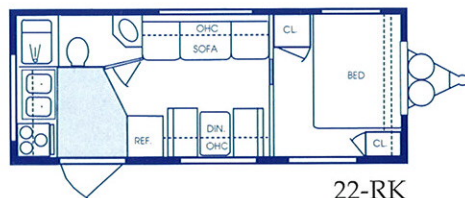
Compare craftsmanship and features with all the others and you will be able to make a sound decision on just which manufacturer offers the most value for your money.

Years of trouble-free use await you in Electra. The added convenience of increased storage inside and out is a major plus most other manufacturers do not provide. Exterior storage compartments are carpeted and insulated for the extra protection of your valuables, stand-up 5th Wheel models offer heated storage.

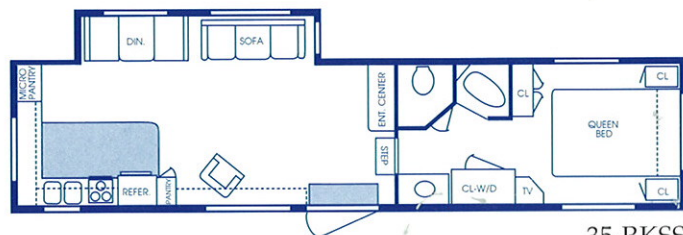
Inside, amenities abound, all cabinetry is built to a true and flush fit, we do not cover shoddy workmanship with unnecessary vinyl beading.



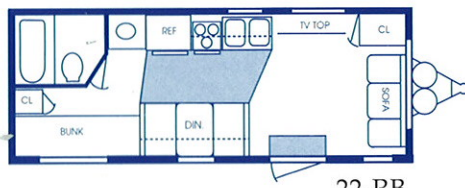
33-RKSS



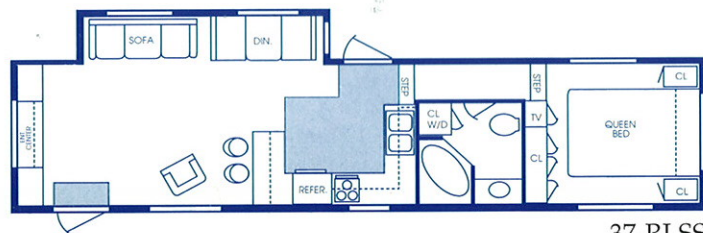
22-RK



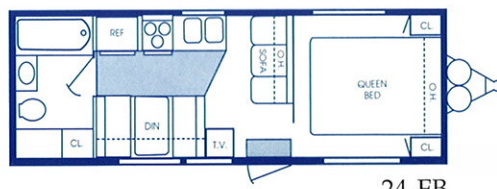
35-RKSS



22-RB



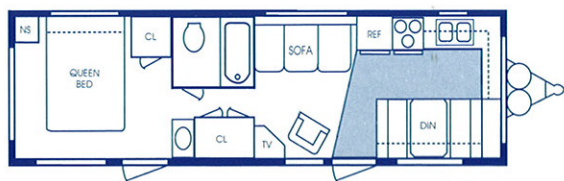
37-RLSS



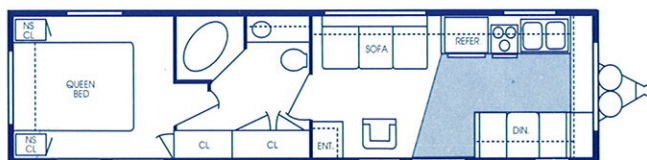
24-FB

ELECTRA & PARK AVENUE STANDARD FEATURES

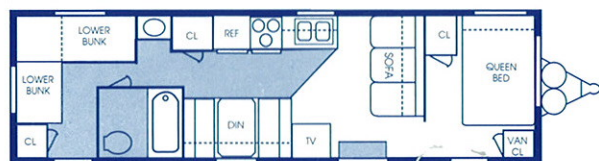
- Awning
- 13,500 BTU Ducted A/C
- TV antenna w/booster
- Cable TV
- 2-30# LP Bottles W/Auto Changeover
- Power Bath Vent
- Rear Window Stoneguard (5th Wheels)
- Patio Light
- "Rhino Tough" TPE Roof
- Aluminum Bumper Cover
- Double Entry Steps – Non Slide Outs
- Triple Entry Steps – Slide Outs
- Dead Bolt Lock
- Large Radius Tinted Jalousie Windows
- Safety Glass Picture Windows
- 30" Wide Radius Entry Door (Most Models)
- Carpeted Heating Storage Compartment (Stand Up 5th Wheel)
- Sewer Hose Storage
- Radial Tires
- Hydraulic Glide On Slide Out Models W/Manual Over-ride
- 12 Bolt Battery On Slide Out Models
- Sofa Bolsters (Except Free Standing Sofas With Arms)
- Microwave Oven
- Double Door Refrigerator
- 3 Burner Range W/9,000 BTU Burner
- 21" Oven W/Black Glass Door
- 6 Gal. LP + 110 Volt Water Heater W/DSI
- Stereo Cassette W/4 Speakers
- Bedroom TV Outlet W/Tray
- Range Hood W/Monitor Panel



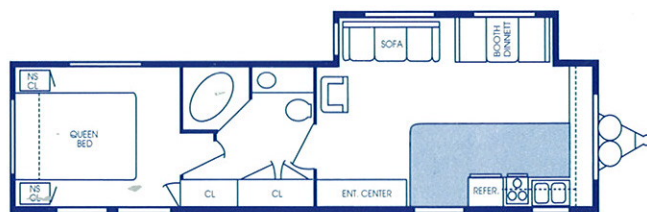
27-FK



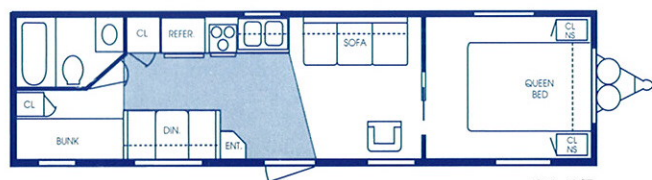
31-FK



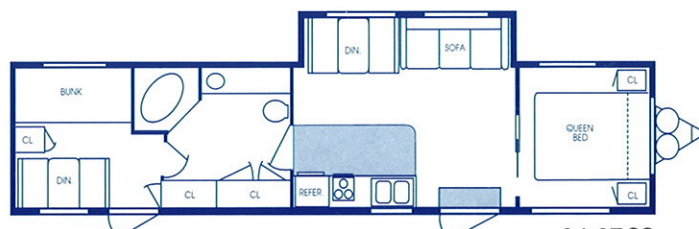
29-2B



31-FKSS



31-2B



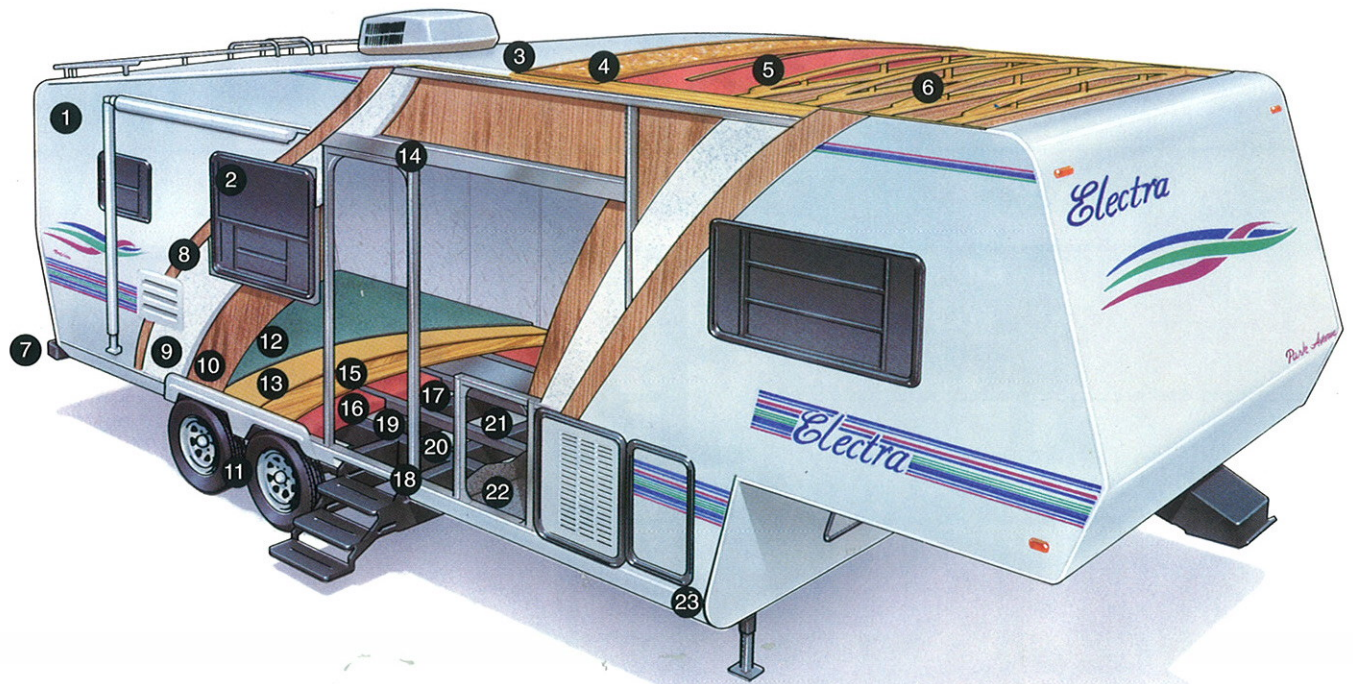
36-2BSS

- 45 Amp Converter W/Charger
- Queen Bed (Most Models) W/Bed Lifts
- Innerspring Mattress
- Interior Grab Handle
- Shower Surround W/Bi-fold Shower Door
- Deluxe Flip Sofa
- Swivel Rocking Chair (Most Models)
- Mini Blinds All Windows
- Large Stainless Steel Kitchen Sink
- Oak Edge Counter Tops
- 2 Sink Covers
- Solid Oak Raised Panel Cabinet Doors
- Residential Style Interior Doors
- Kitchen, Bedroom Roof Vents
- Adjustable Ceiling A/C Ducts
- Vinyl Floor – Kitchen & Entry
- Bathtub Skylight (Most Models)
- Water Heater By-Pass
- Smoke Detector
- Fire Extinguisher

OPTIONS

- Twin Bed
- Extra Large 2 Door Refrigerator
- Raised Oak Refrigerator Door
- Day/Night Shades
- Free Standing Dinette W/2 Chairs
- 2 Extra Dinette Chairs
- Ceiling Fan (5th Wheels Only)
- Heated Enclosed Holding Tank (5th Wheels Only)
- Washer/Dryer (Some Models)
- Roof Rack & Ladder
- 15,000 BTU Ducted A/C (STD 33ft. & Above)
- 2nd Swivel Rocker
- Recliner Chair IPO
- Spare Tire
- Front Stabilizer Jacks
- Rear Stabilizer Jacks
- Power Jack
- Shock Absorbers On 5th Wheels
- Phone Jack
- Hide-A-Bed Sofa
- Outside Shower (Some Models)
- High-Speed Attic Fan

Electra-Park Avenue



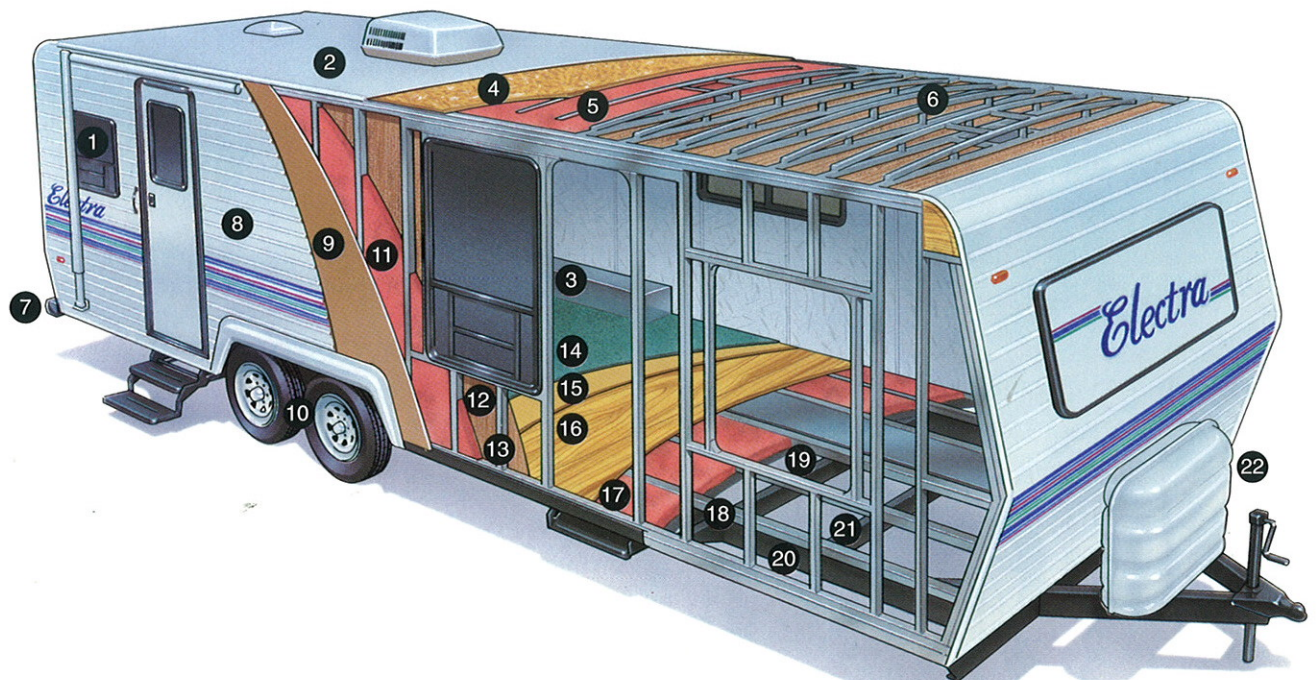
Electra-Park Avenue

1. Smooth 1 pc. Fiberglass 2. Tinted Radius Corner Jalousie Windows 3. 1 Piece Durashell "Rhino Tough" TPE Roof 4. 3/8" Roof Decking 5. R-14 Insulation 6. 5" Tapered Truss Rafters 7. Hose Bumper w/Cover 8. Luan Board 9. Block Foam Insulation 10. Vinyl Interior Wall Board 11. Radial Tires w/Styled Wheels 12. 30 oz. Plush Carpeting 13. Foam Carpet Pad 14. Tubular Aluminum Framing 15. 5/8" Floor Decking 16. Block Foam Insulation 17. Galvanized Underbelly 18. 30" Radius Corner Entry Door 19. Welded Steel Tube Floor 20. Steel Main Rail 21. Steel Cross Member 22. Carpeted Basement Storage 23. Radius Aluminum Sidewall Skirt

Electra

1. Tinted Radius Corner Jalousie Windows 2. 1 Piece Durashell "Rhino Tough" TPE Roof 3. Galvanized Wheel Wells 4. 3/8" Roof Decking 5. Cut and Custom Fit Fiberglass Insulation 6. 4-5/8" Aluminum Truss Rafters 7. Hose Bumper w/Cover 8. .024 Krystal Kote® Aluminum 9. Foam Core Blanket 10. Radial Tires w/Styled Wheels 11. Cut and Custom Fit Insulation 12. Vinyl Interior Wall Panel 13. 1-1/2" x 1-1/2" Welded Tubular Sidewall 14. 30 oz. Plush Carpeting 15. Foam Carpet Pad 16. 5/8" Tongue and Groove Decking 17. Radius Entry Door 18. 2-1/2" Tubular Floor 19. Darco® Underbelly 20. Steel Tube Main Rail 21. Steel Cross Member 22. LP Bottle Cover

Electra



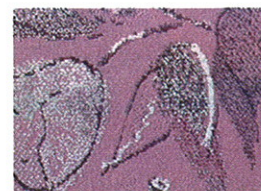


Slide-out with entertainment center.

THE CHOICE IS YOURS...
TEXTURED FABRICS VELVET FABRICS



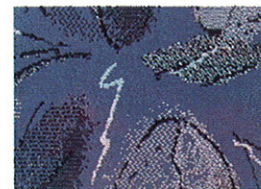
PLUM



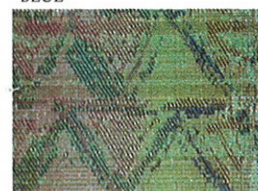
PLUM



BLUE



BLUE



TEAL



TEAL



Kitchen with slide-out dinette.



Bath with full size shower.

For added comfort inside we take the time to custom fit the insulation within the frame work for heating and cooling efficiency. Roof-ducted air with 360° dispersion

and an in-floor "house type" heating system means high efficiency no matter the weather.

The beauty of Electra is obvious inside and out.

Electra R.V. Mfg., Inc.  **THOR**
AMERICA'S BEST RV VALUE

67320 Cassopolis Rd, Cassopolis MI 49031 Phone (616) 699-5191 Fax (616) 699-7443

