

# Outback

*Sydney Edition*

09

FIFTH WHEELS AND TRAVEL TRAILERS

Why Settle...







*Outback Sydney 310 FRL bedroom in Havana.*

## Why Settle...

Experience the Wonder of Sydney:  
 Step up to an even more pleasantly appointed fifth wheel or travel trailer with the new Sydney by Outback. Focused on aerodynamic and tasteful design throughout and fashioned with interiors for the fresh look of today, Sydney offers you high-end quality at a mid-range price. Using the latest materials and technology to combine strength and lightness, Sydney combines durability, style, and ease of towing. Compare Sydney's list of standard features and you'll be amazed at the value Sydney delivers. **Why Settle** for anything else.



*Outback Sydney 310 FRL bathroom.*





*Outback Sydney 310 FRL interior in Havana.*



*Decor*



*Russet*



*Havana*



*Fern*



Every Sydney model comes with an 8 cubic ft. refrigerator. Bring all of the food and drinks you want.



Overhead storage in the slide out is easy to access. The glass mullion slide out cabinet doors offer an elegant touch to the living area. And notice the ceiling height, 6' 2".



Sydney's centrally located Convenience Control Panel has all of your system controls in one location.



The Sydney Camp Kitchen features a 2-burner cook top, hot/cold water faucet with a 20ft. water hose, towel bar and cutting board. Preparing your meals in a Sydney is a breeze!

# Why Settle...



... when you can



Oversized pass through storage on every Sydney model allows you to take it all with you!



Sydney's heated underbelly encloses tanks and valves, helping to extend the camping season.



Enjoy a comfortable nights sleep on Sydney's air bed sofa sleeper. Sleeps 2 adults comfortably.



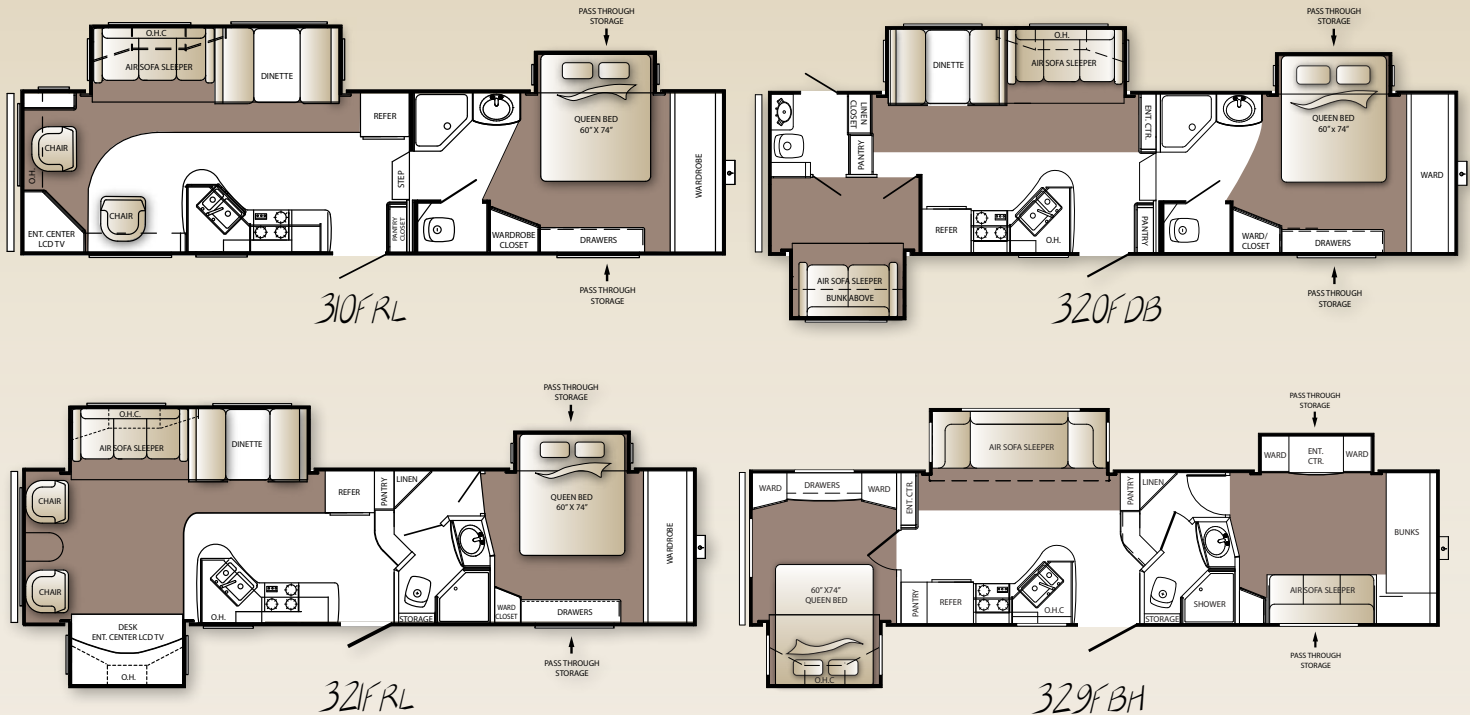
Sydney's one touch power awning greatly reduces set up time, so you can spend more time camping!



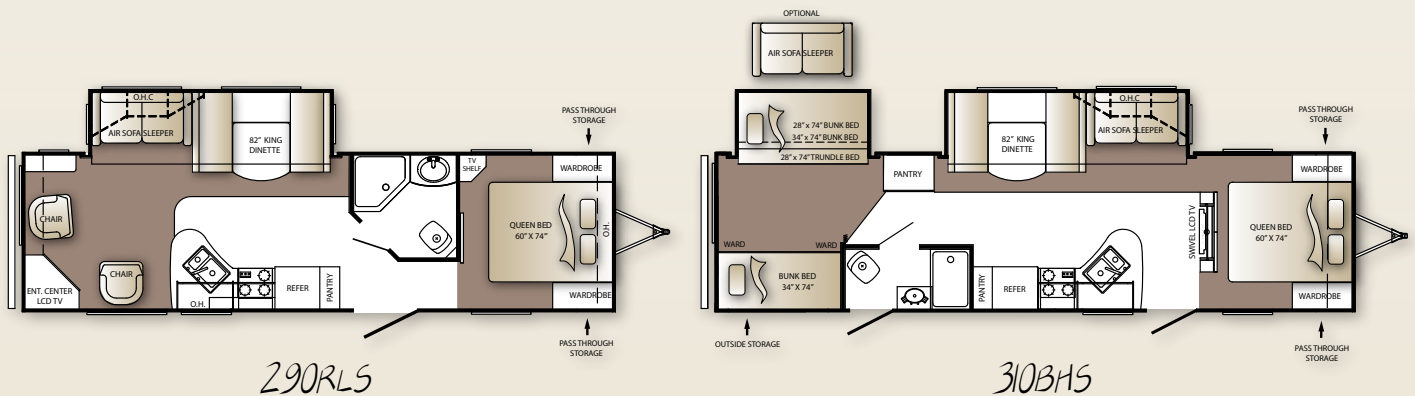
Turning radius is improved more than 30% with the most aerodynamic front fiberglass cap in the industry. Hitch mirror and lights make hooking up easy.

*have it ALL!*

## Sydney Fifth Wheels



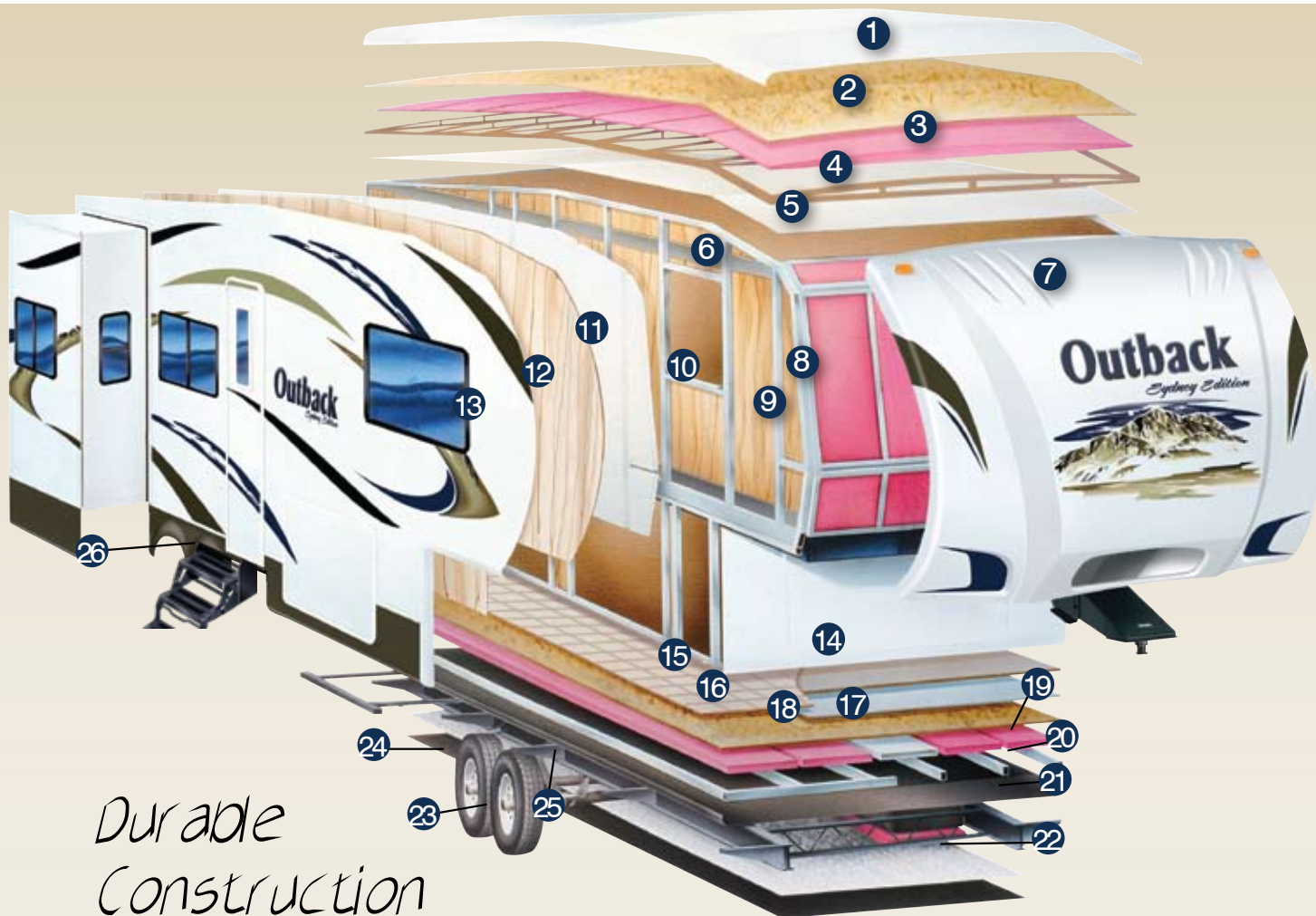
## Sydney Travel Trailers



Measurements	290RLS	310BHS	310FRL	320FDB	321FRL	329FBH
Shipping Weight	7005	7895	9060	9985	9515	TBD
Carrying Capacity	2495	2105	2440	2045	2500	TBD
Hitch Weight	765	865	1890	1870	1845	TBD
Exterior Length	33' 6"	35' 10"	35' 1"	36'	35' 1"	TBD
Exterior Width	96"	96"	96"	96"	96"	TBD
Ext. Height - A/C top	11' 1"	11' 1"	12' 6"	12' 4"	12' 4"	TBD
Awning	19'	19'	19'	14'	12'	TBD

Tank Capacities		*290RLS 40 gal. Grey tank	
LP Capacity	60 lbs.	R-values	
Fresh Water	50 gal.	Roof	R-14
Grey Water	80 gal.*	Floor	R-14
Waste Water	40 gal.	Wall	R-9





*Durable  
Construction*

## ROOF

- 1** Seamless One-Piece EPDM Rubber Roof
- 2** 3/8" Fully Walkable Wood Decking
- 3** R-14 Blanket Insulation
- 4** 5" Radius Roof Trusses
- 5** 1/8" Vinyl Protected Ceiling Panel

## SIDEWALL

- 6** Metal Backing EGG Strips
- 7** Aerodynamic Radius High Gloss Front Fiberglass Cap w/ Hitch Vision
- 8** R-9 Blanket Fiberglass Insulation
- 9** 2" Box Welded Aluminum Side and End Walls
- 10** Corner Radius Window Inserts
- 11** R-9 Solid Block Foam Insulation
- 12** 1/8" Luan Wood Backing
- 13** Gel Coated Fiberglass Exterior

## FLOOR

- 14** High Density Residential Carpet w/ Stain Resistance
- 15** Residential Grade Linoleum
- 16** Seamless 5/8" Treated Wood Floor Decking
- 17** Residential In Floor Ducted Heat
- 18** R-14 Blanket In Floor Insulation
- 19** 3" Welded Box Frame Aluminum Floor Joists, 13" on Center
- 20** Darco Wrap Vapor Barrier
- 21** 8" to 10" "Powder Coated" Steel I-beam Frame
- 22** One Piece, Polypropylene Enclosed and Heated Underbelly
- 23** 15" Radial Tires with 12" Electric Brakes
- 24** EZ Lube Axles
- 25** Leaf Spring Suspension System
- 26** Entry Step Light

## Standards

### Living Area

- Rich residential cherry hardwood cabinetry with a touch of butter rum cream thermofoil raised panel doors
- Air bed sleeper sofa
- Large panoramic windows
- Pre-drilled and screwed cabinetry
- King U-shape dinette (TT only)
- 36" flush floor slides
- Access door under dinette
- Etched glass upper cabinets
- Custom designed box valances with soft curtains
- Pleated shades
- Linoleum flooring
- Deep wood side drawers with steel guides
- Skylight (most models)
- 6'2" extra tall slide out with 16" cabinets (FW only)
- Water, soil, stain resistant fabrics
- Large overhead cabinets
- Decorative wall lights
- Residential air bed sleeper sofa\*
- 26" LCD HDTV flat screen (TT only)\*
- 32" LCD HDTV flat screen (FW only)\*
- Central command center

### Kitchen

- 60/40 deep sink with 3" drain
- Trash can storage
- High rise faucet
- Utensil tray
- Microwave
- 3 burner range
- Oven\*

### Bedroom

- Deluxe innerspring mattress
- TV hook-up
- Solid wood slider bedroom door
- His and her wall lights
- Deluxe wardrobe
- Residential bedspread with headboard
- Bedroom speakers

### Bathroom

- Residential Neo-angle shower (most models)
- Glass shower door (most models)
- Residential height vanity
- Porcelain foot flush toilet
- Deluxe medicine cabinet
- Laundry hamper (most models)

### Appliances

- AM/FM/CD/ stereo with DVD player and MP3 hook-up
- 8 cu. ft. two door refrigerator
- 3 burner range
- 6 Gallon gas/electric DSI water heater and by-pass with 16.2 gallons per hour "quick recovery"\*
- Wall mounted thermostat controlled AC
- 30,000 BTU furnace

### Exterior Standards

- Black framed tinted jalousie safety glass windows
- Extra large baggage doors, 1" thick with continuous hinge and rubber D-seal
- Folding entry grab handle
- Extra wide 30" radius main entry doors\*
- Front diamond plate rockguard (TT only)
- Hitch light (TT only)
- Hitch vision mirror with docking lights (FW only)
- Satellite prep
- Molded front fiberglass cap (FW only)
- Extended drip caps, full length drip rails
- Two security lights (one on each side)\*
- Heated enclosed underbelly including tanks and valves
- Ladder (FW only)
- Porch light
- Snap pins on front jacks (FW only)
- Exterior 120V receptacle
- Weather encapsulated body trim
- Automotive style fender skirt
- Exterior speakers
- EZ lube axles
- Electric front jacks\*
- Electric awning

- 15" spare tire, carrier & cover
- Outside camp kitchen\*
- Exterior quick connect LP hook-up

### Walls – Construction

- 2" welded aluminum framed side walls and end walls
- Solid block foam R9 insulation

### Roof

- 5" tapered truss on 16" centers
- 3/8" roof decking
- One-piece EPMD rubber roof
- R14 blanket insulation

### Floor

- 3" welded aluminum floor joist 13" center
- 5'8" seamless one-piece floor decking
- R14 blanket insulation
- Wrapped vapor barrier
- Polypropylene enclosed heated underbelly enclosed tanks and valves

### Chassis

- Leaf spring equalizing suspension system
- 8" powder coated I-beam (TT only)
- 10" powder coated I-beam (FW only)
- EZ lube axles
- 12" electric brakes
- 225 75/15 radial tires\*
- Aluminum Wheels

### Utilities

- 55-amp converter
- 2 – 30 lbs. LP bottles with auto changeover
- TV antenna with booster cable TV
- 30-amp shore power line

### Safety

- LP leak detector
- Smoke detector
- Carbon monoxide detector\*
- Fire extinguisher
- Tinted safety glass windows
- Break-away switch
- Safety chains (TT only)
- Manual slide backup on all electric slide outs

## Options

- Designer Package
- Comfort Package
- Oven
- Air bed sleeper sofa
- 26" LCD TV (TT)
- 32" LCD TV (FW)
- Large radius entry door
- RVIA
- 6 gallon gas/electric DSI water heater bypass with 16.2 gallons per hour "quick recovery"
- Electric front jacks (FW only)
- Carbon monoxide detector
- Free standing table and chairs
- Stabilizer jacks (4) TT (2) FW
- 2nd residential air bed sleeper sofa (only on 310BHS)
- Radial tires
- Aluminum wheels
- Security lights (one on each side)
- Outside camp kitchen
- 15" spare tire, carrier, and cover

### Sydney Comfort Package\*

- Roof air conditioner
- TV antenna with booster
- Electric patio awning
- AM/FM/CD stereo with DVD player and MP3 hook-up
- Folding entry handle
- Satellite prep
- Outback air vent

### Sydney Designer Package\*

- Wallpaper border
- Shower door (most models)
- Bathroom accessories
- Utensil tray
- Residential air bed sleeper sofa
- 6 panel raised refrigerator panels
- trash container

\*Denotes STD Build Options



Comfortable swivel rockers, large windows, ample storage and large flat screen televisions make Sydney's rear living room models feel just like home.

# Outback

*Sydney Edition*



**Keystone RV Company**

2642 Hackberry Dr. | Goshen, IN 46526  
574.535.2100 | [www.keystone-outback.com](http://www.keystone-outback.com)

Product information is as accurate as possible as of the date of publication of this brochure. Features, floor plans, and specifications are subject to change without notice. Please also consult Keystone's web site at [keystonerv.com](http://keystonerv.com) for more current product information and specifications. Tow Vehicle Disclaimer: CAUTION: Owners of Keystone recreational vehicles are solely responsible for the selection and proper use of tow vehicles. All customers should consult with a motor vehicle manufacturer or their dealer concerning the purchase and use of suitable tow vehicles for Keystone products. Keystone disclaims any liability or damages suffered as a result of the selection, operation, use or misuse of a tow vehicle. KEYSTONE'S LIMITED WARRANTY DOES NOT COVER DAMAGE TO THE RECREATIONAL VEHICLE OR THE TOW VEHICLE AS A RESULT OF THE SELECTION, OPERATION, USE OR MISUSE OF THE TOW VEHICLE. December 2008