

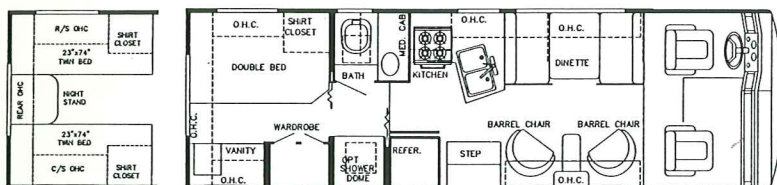


Introducing the All New

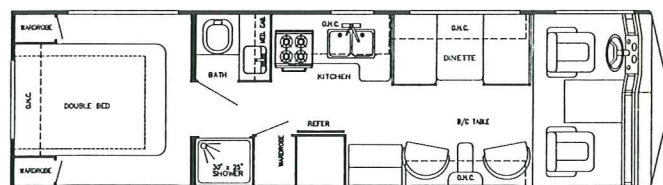
sunsport

BY GULF STREAM

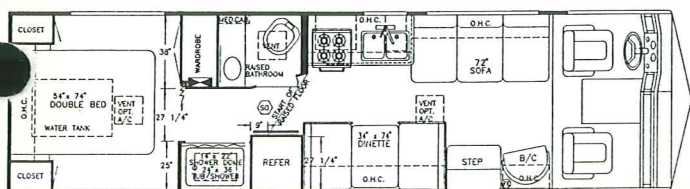
FLOORPLANS



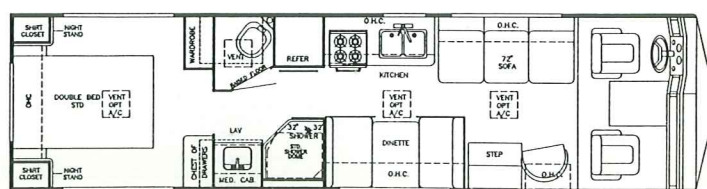
Model 8272 (Twin Bed Opt. Available)



Model 8304 (Queen or Twin Bed Opt. Available)



Model 8316 (Queen or Twin Bed Opt. Available)



Model 8323 (Queen or Twin Bed Opt. Available)

sunsport

BY GULF STREAM

Standard Specifications

Interior and Decor

- ☐ Self-Edged & Radius-Cornered Countertops
- ☐ Custom Padded Dash w/Illuminated Gauges
- ☐ Windshield Privacy Drape
- ☐ Deluxe Carpet w/Pad
- ☐ Deluxe Furniture
- ☐ 3-Way Driver Seat
- ☐ Deluxe Door & Window Drapes
- ☐ Coordinated Bedspreads & Shams
- ☐ Oak-Framed Decorator Mirror
- ☐ Generous Overhead Storage

Exterior and Construction

- ☐ Heated & Fully Enclosed Holding Tanks
- ☐ Tubular Steel Cage Construction on Sidewalls & Roof (16 Gauge, 1-1/2" X 1-1/2")
- ☐ 1-1/2"x1-1/2" 16 GA Welded Steel Truss System
- ☐ Laminated Floors w/Metal Underbelly
- ☐ R-5.0 1" Block Foam Insulation in Floor, Walls and Roof
- ☐ Fully-Welded Steel Firewall
- ☐ Sealed Perimeter & Engine Compartment
- ☐ .040" Smooth Fiberglass Exterior
- ☐ Panoramic Windshield
- ☐ Tinted Windshield & Windows
- ☐ Outstanding Exterior Storage
- ☐ Deluxe Outside Mirrors
- ☐ One-Piece Rubber Roof

Electrical Systems

- ☐ Easy-Access Dual Battery System
- ☐ 12-Volt, 45-Amp Converter
- ☐ Electric Supply Cord
- ☐ Electric Overload Protection
- ☐ Generator Compartment
- ☐ Automotive-Type, Color-Coded Wiring
- ☐ Quad Headlight System

Bath and Water

- ☐ Dual Holding Tanks - Approx. 50 Gal. (8372 - 40 Gal.)
- ☐ Fresh Water Tank - Approx. 30 Gal.
- ☐ Demand Water System
- ☐ City Water Hook-Up
- ☐ Double Stainless Steel Sink
- ☐ Tub/Shower Combination (most models)
- ☐ Marine Toilet
- ☐ Gravity Drains on Fresh Water Lines
- ☐ Outside Fresh Water Tank Drain
- ☐ Skydome in Shower/Bath (Most Models)

Appliances

- ☐ 4-Burner Range
- ☐ Lighted, Power Range Hood
- ☐ 2-Door, 2-Way Refrigerator
- ☐ Microwave Ready

Heating, Ventilation & Air Cond.

- ☐ 30,000 BTU Ducted Furnace w/Electronic Ign. (most models)
- ☐ Pre-Wired for Roof Air Conditioning

Deluxe Standard Features

- ☐ Auto Dash Air Conditioner
- ☐ Dbl. Door, 2-Way Refrigerator
- ☐ Microwave Oven
- ☐ 6 Gal. Electric Ignition W/H
- ☐ TV Antenna w/Amp & Boost & 2 Jacks
- ☐ Auto Cruise Control
- ☐ Spare Tire Carrier & Cover
- ☐ Wheel Covers
- ☐ AM/FM Cassette w/4 Speakers
- ☐ Monitor Panel
- ☐ Emergency Start Switch
- ☐ Power Vent in Commode
- ☐ Generator Ready
- ☐ 65 lb. LP Tank in Models (8304, 8316, 8323)
- ☐ 42 lb. LP Tank in Model 8272
- ☐ Converter w/ Battery Charger

Chassis

- ☐ GM 454 CID V-8 Engine w/Electronically Shifted 4-Speed Automatic Transmission
- ☐ Super Duty Ford w/460 V-8 & 4-Speed Automatic (Available as Option in Models 8316 & 8323)
- ☐ Electronic Ignition
- ☐ Gasoline Tank- Approx. 60-85 Gal. Depending on Model
- ☐ 4.10:1 Rear Axle Ratio- Models 8272 & 8304
- ☐ 4.56:1 Rear Axle Ratio- Models 8316 & 8323
- ☐ Power Steering and Brakes
- ☐ High Capacity Automotive Heater
- ☐ Tilt Steering Wheel
- ☐ Wheel Base- 178" (8272,8304), 190" (8316), 208"(8323)
- ☐ Exterior Length-
 - Model 8272 - Approx. 27'
 - Model 8304 - Approx. 30'
 - Model 8316 - Approx. 31'
 - Model 8323 - Approx. 32'
- ☐ Interior Height - 6'-6"
- ☐ Exterior Height - 10'-2" (9'-8" on 8220)

Gulf Stream Coach, Inc. P.O. Box 1005 • Nappanee, IN 46550

Your Dealer

For further information and available floorplan options, contact your local dealer or Gulf Stream Coach, Inc. Also ask about our other lines of recreational vehicles including Class A's, Class C's, Travel Trailers, Fifth Wheels and Van Conversions.

Gulf Stream Coach, Inc. reserves the right to make changes in prices, colors, materials, components and specifications and to discontinue models at any time without notice or obligation. Gulf Stream Coach, Inc. assumes no responsibility for any error in type or print reproduction of specifications or floorplans in this brochure.