

2002

Diplomat LE

by Monaco



An adventurous spirit

deserves comforts of home

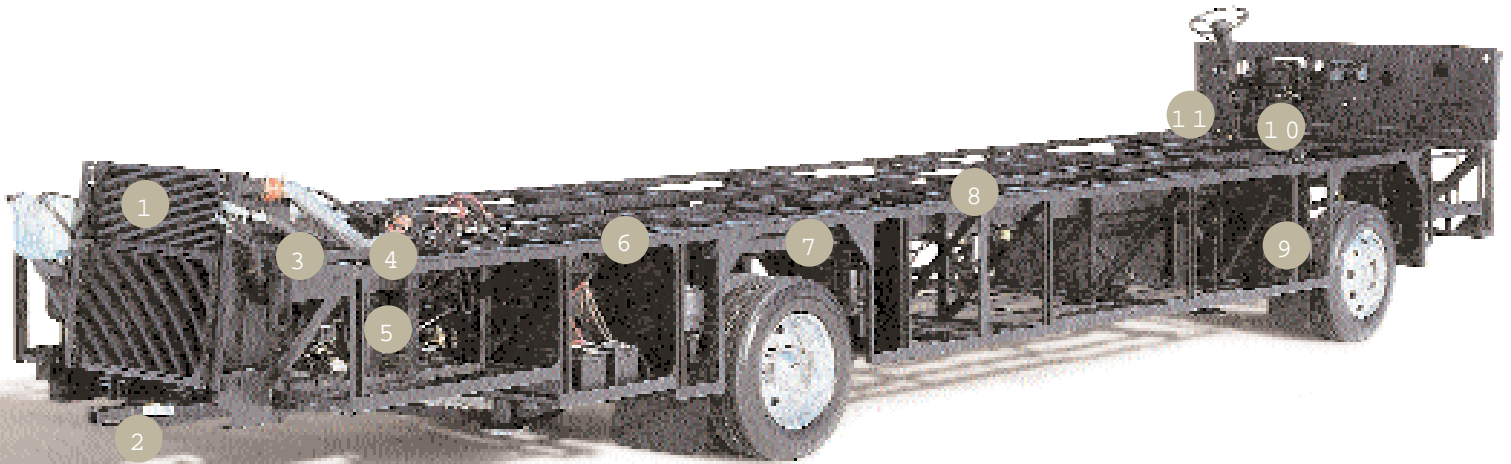
Life in a motorhome comes with the natural ability to pick up and go wherever, whenever you desire. Whether it's cycling in the Canadian Rockies or swimming in the Gulf of Mexico, your adventurous side will guide you to your next destination. To where the comforts of home will be waiting for you at the end of your day.



Put your hands on the metal

feel the Monaco quality construction

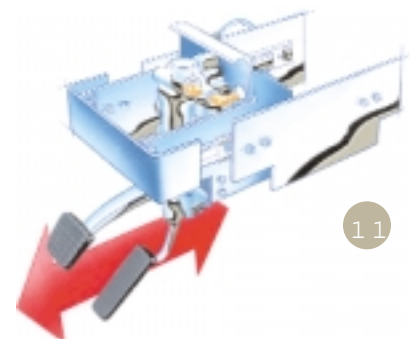
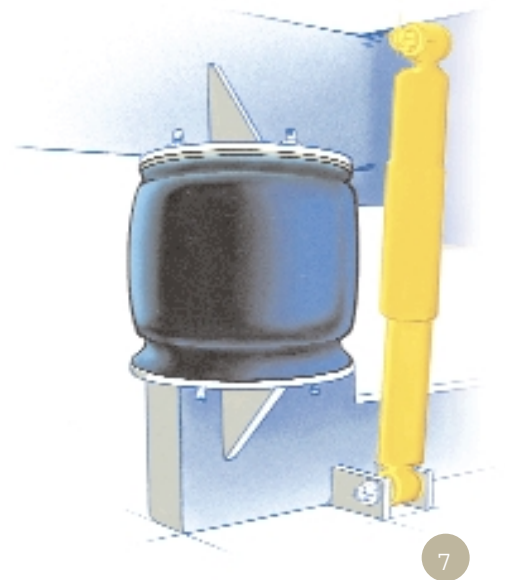
3



Diplomat LE RM8H Raised Rail Chassis

features:

1. Stacked aluminum intercooler.
2. Highest in class 10,000 lb. tow hitch rating and 32,000 lb. GVWR.
3. Flared rail at engine compartment to 42 inches wide lowers engine mounting position.
4. Raised rail steel construction for larger storage bays, a lowered engine and outboard-mounted suspension.
5. Powerful Cummins® turbo-charged diesel engine for ample power, fuel economy and reliability.
6. 3/8-inch thick frame rail versus the regular 1/4-inch rail.
7. Eight outboard-mounted airbags and shock absorbers for decreased roll.
8. High rails provide full pass-through basement storage bays with flush floor.
9. Leveling sensors at each axle to continuously adjust the air pressure and maintain a level ride.
10. Allison® automatic transmission for smooth, precise shifting, increased fuel economy and added horse-power and torque.
11. Position of brake and accelerator pedals are easily adjustable to individual preferences.



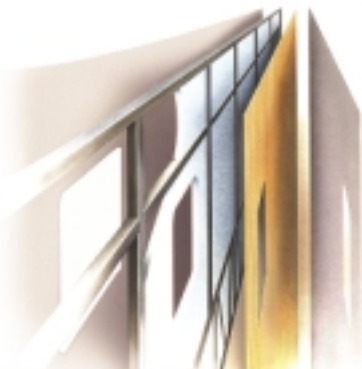
The roof structure consists of:
(top to bottom)



1. One-piece crowned fiberglass roof.
2. Luaun backing.
3. Tapered bead foam two inches thick at center.
4. Two-and-a-half inch thick alu-

minum I-beam superstructure filled with fiber-glass insulation.

5. Vapor barrier.
6. Structure foam.
7. Bead foam insulation.
8. Soft foam padding for extra insulation and interior noise reduction.
9. Padded vinyl ceiling.



Layers and layers of protection:
(left to right)

1. High-gloss gel coat fiber-glass.
2. Aluminaframe C-channel uprights and interlocking cross members.
3. Dow Structure Foam® insulation.
4. 1/8-inch Luaun paneling.
5. Wallpaper.



The greatest features of Monaco motorhomes are the pioneering development and custom-engineering that go into each coach. Partnerships with Cummins® and Allison® have introduced key innovations and Monaco continue to lead the industry, making life on the road more comfortable and safe for you.

Specifications

BODY CONSTRUCTION

Aluminum Superstructure
Seamless One-Piece Molded
Crowned Fiberglass
Roof
One-Piece Front and Rear Molded
Fiberglass Caps
Steel Framed Floor
Two-Layers Structurewood
Flooring
One-Piece Generator Access Door
Integrated Fiberglass Front and Rear
Bumpers
Foam Insulated Underbelly with Luan
Backer
Laminated Gel Coat Fiberglass
Sidewalls
Air Activated Power Step Well
Cover
Insulated Aluminum Baggage Doors
One-Piece Polyethylene Pass-
Through Storage
Compartments
Deluxe Full Body Paint
Chrome Name Decals
Rear Ladder

OPTIONS

Full Length "Monaco" Mud Flap
Slide-Out Storage Tray (Complete
Pass-Through)
3M® Film Front Mask

COCKPIT

High Intensity Pilot and Co-Pilot
Map Lights
Driving Lights/Headlights
Halogen Fog Lights
Audible Turn Signals
Roof Mounted Dual Trumpet Air
Horns
Rear Vision System
CD Player/Radio with Four
Speakers
Lighted VIP Smartwheel® with
Controls for Windshield Wipers,
ICC and Cruise Control
Chrome Power Heated Remote
Mirrors
Low Coolant Warning Light and
Buzzer
Vinyl Pilot and Co-Pilot Recliner
Seats
Carpet Driver and Passenger Floor
Mats
Power Sunvisors
Intermittent Windshield Wipers
Power Steering

Burlwood Instrumentation Panel
Cruise Control Light on Dash
Adjustable Accelerator and Brake
Pedals
Pilot and Co-Pilot Cup Holders

OPTIONS

Six-Way Power Pilot Seat
Six-Way Power Co-Pilot Seat
Leather Faced Pilot and Co-Pilot
Seats
Extra-Wide Co-Pilot Seat with
Power Footrest
Co-Pilot Seat With Power Footrest
(Requires Six-Way Power
Co-Pilot Seat)
Dash Fans

APPLIANCES AND ACCESSORIES

Large Double-Door Refrigerator
with Raised Panel Doors
High Output Three-Burner Cooktop
with Flush Mount Cover
and Drawer
Spacesaver Convection Microwave
TV Antenna and Booster
Digital Satellite System Prep
25-inch Stereo Color TV with
Remote in Living Area
19-inch Stereo Color TV with
Remote in Bedroom
Stereo TV and VCR Wired Through
Ceiling Speakers
Stereo VCR with Remote and Video
Switching Box
Cable TV Hook-Up and Telephone
Jacks
Washer/Dryer Prep

OPTIONS

Large Double Door Refrigerator
with Ice Maker and
Raised Panel Doors
Four-Door Refrigerator with Ice
Maker and Raised Panel Doors
Home Theater System with DVD
Player
DVD Player
10-Disc CD Changer
AM/FM Stereo Cassette (Deletes
CD)
Vented Combination Washer/Dryer
Fully Automatic Digital Satellite
System

INTERIOR

Stained Oak Cabinetry
Solid Wood Square Raised Panel
Cabinet Doors
Carpet-Lined Cabinet Shelves

Large Overhead Storage above
Roadside Sofa and
above Slide-Out in Bedroom
Dresser with Solid Surface Top in
Bedroom
Padded Vinyl Ceiling
Solid Surface Kitchen Countertop
with Stainless Steel Sinks
and Two Sink Covers
Solid Surface Bathroom Countertop
with Integrated Sink
Low Friction Roller Drawer Guides
Brass Finished Cabinet Hardware
Day/Night Pleated Shades in Living
Area with Blackout
Shades in Bedroom
Mini Blinds in Kitchen and
Bathroom
Fabric Sleeper Sofa
Fabric Barrel Chair(s)
Nylon Carpeting and Pad in Living
Area and Bedroom
Free Standing Dinette Table with
Two Chairs
Ceramic Tile in Kitchen and
Bathroom
Oversized Rear Wardrobe Closet
with Mirrors
One-Piece Fiberglass Shower
Glass Shower Door with Brass
Frame
Full Length Dressing Mirror
Medicine Cabinet with Shelves
Bathroom Mirror
Towel Bars in Bathroom
Raised Panel Bathroom Door
Bedsprad and Pillows
Party Table
Travel Locks
Nightstands with Solid Surface
Countertops

OPTIONS

Natural Oak Cabinetry
Natural Maple Cabinets
Natural Cherry Cabinets
Stained Cherry Cabinets
Walnut Cabinetry
Plank Flooring in Kitchen and
Bathroom
Computer Table (Requires Recliner)
(40PBD, 40PWD)
Leather Faced Recliner
Fabric Recliner

Fabric Magic Bed
 Leather Faced J-Lounge (Passenger Side) (40PBD, 40PWD)
 Fabric Electric Sofa
 Two Additional Folding Chairs
 Booth Dinette
 Neo-Angled Bath Tub (N/A: 38PST, 40PST)

ELECTRICAL SYSTEMS AND

LIGHTS

50 amp 120V Distribution Panel and Power Cord
 Onan® 6.5 KW Generator
 1500-Watt Inverter
 Four 6V Deep Cycle Batteries
 Two 6V Deep Cycle Batteries
 Dual 12V Outlets in Dash
 Battery Disconnect Switch
 Porch Light
 Courtesy Night Lights in Entry Step and Bedroom
 Water Pump Switch (Bathroom, Service Bay)
 Lights in Outside Storage Compartment
 120V Receptacles Inside Storage Compartment
 Underhood Utility Light
 Computer Hook-Up with Phone Jack in Dinette Area
 Systems Control Center
 Fluorescent Ceiling Lights in Kitchen
 Halogen Lights with Dimmer
 Switches Under Cabinets in Living Room, Kitchen, and Bedroom
 Cosmetic Vanity Lights in Bathroom
 Lighted Utility Center (Telephone, Cable TV, Water, Electrical Hook-Ups)
 Decorative Wall Lights in Bedroom
 Decorative Wall Light in Living Area

OPTIONS

Energy Management System
 Onan® 7.5 QD Diesel Generator

PLUMBING AND LP SYSTEMS

Demand Water System and Water Pump
 10-Gallon LP Gas/Electric Water Heater with Electronic Ignition (DSI)
 Winterization Valving System
 Water Filter in Kitchen

China Toilet

No-Fuss Flush Black Holding Tank
 Rinsing System
 Insulated Systems Compartment with
 Easy Access to Hook-Up
 Gravity and Pressurized Water Fill

HEATING, VENTS, AND

AIR CONDITIONING

Two Low Profile 13.5M BTU Air Conditioners with Ducted Air and Wall Thermostat with Heat Pumps
 40M BTU Electronic Ignition Furnace (50M BTU on 38PST and 40PST)
 Electronic AC/Heat Climate Control System
 In-Floor Ducted Heating System
 12V Roof Vent in Bathroom
 12V Attic Fan in Kitchen
 Wet Bay with 12V Heater

OPTIONS

Cold Weather Package (Individual Tank Heating Pads)
 12V Attic Fan in Bathroom
 Aqua-Hot® Heating System

WINDOWS, DOORS AND AWNINGS

Radius Dual Pane Safety Glass Dark Tinted Slider Windows
 Front Entry Door with Removable Screen and Awning
 Power Entrance Step
 Tinted Skylight in Bathroom
 Interior and Exterior Grab Handles
 Acrylic Patio Awning with Color Coordinated Hardware
 Slide-Out Awnings

OPTIONS

Automatic Patio Awning
 Window Awning

SAFETY

Fire Extinguisher
 Deadbolt Lock on Entrance Door
 120V GFI Protected Circuit (Kitchen, Bathroom, Exterior)
 LP Gas Detector
 Smoke Detector
 Carbon Monoxide Detector
 Pilot and Co-Pilot Three-Point Seat Belts (Lap and Shoulder)

Third Brake Safety Light
 Egress Window

CHASSIS/ENGINE/SUSPENSION

Raised Rail Roadmaster Chassis
 Cummins® ISC 330 Electronic Engine with Allison® 3000 MH 6-Speed World
 Transmission and Electronic Shifter
 Torque for 330 hp Engine: 950 lbs./ft. Max. Net at 1,400 RPM
 Rear Axle Ratio: 4.30:1
 Cubic Inch Displacement: 504.5"/8.3L
 160 amp Alternator
 Radial Tires: 255/70R/22.5
 Cushion Air Glide Suspension with Eight Outboard
 Mounted Air Bags and Eight Gas Shock Absorbers
 Automatic Traction Control
 Stainless Steel Wheel Simulators
 Dual Fuel Fill
 Anti-Lock Braking System with Full Air Brakes (Drum)
 Pac Exhaust Brake
 Auto Slack Adjusters
 Fuel/Water Separator
 Side Air Intake
 Air Cleaner Restriction Indicator
 Engine Block Heater with Switch in Dash
 Manual Hydraulic Leveling System
 10,000 lb. Hitch Receiver with Six-Point Connector
 Undercoating

OPTIONS
 Cummins® ISC 350 Engine with Fuel Injection and Allison® 3000 MH World Transmission and Electronic Shifter
 Polished Aluminum Wheels
 Two-Speed Fan Drive (Only with Optional ISC 350hp Engine)
 Automatic Traction Control



WEIGHT RATINGS (LBS.)	36PBD	38PBD	38PST	40PBD	40PWD	40PST	40PBT
Gross Vehicle	32,800	32,800	32,800	32,800	32,800	32,800	32,800
Gross Combined	42,800	42,800	42,800	42,800	42,800	42,800	42,800
Front Gross Axle	12,800	12,800	12,800	12,800	12,800	12,800	12,800
Rear Gross Axle	20,000	20,000	20,000	20,000	20,000	20,000	20,000

MEASUREMENTS

Wheelbase	216"	242"	242"	256"	256"	256"	256"
Overall Length	36' 4"	38' 6"	38' 6"	39' 8"	39' 8"	39' 8"	39' 8"
Overall Height (with A/C)	12'	12'	12'	12'	12'	12'	12'
Interior Height	78"	78"	78"	78"	78"	78"	78"
Interior Width	94.5"	94.5"	94.5"	94.5"	94.5"	94.5"	94.5"
Exterior Width	100.5"	100.5"	100.5"	100.5"	100.5"	100.5"	100.5"

TANK CAPACITY (GAL.) All tank capacities are approximate. Actual "usable capacity" may vary as a result of variances in installation and fabrication.

Water Heater	10	10	10	10	10	10	10
Gray Tank	60	60	60	60	60	60	60
Black Tank	39	39	39	39	39	39	39
Fresh Tank	100	100	100	100	100	100	100
LP Tank*	38	38	38	38	38	38	38
Fuel Tank	100	100	100	100	100	100	100

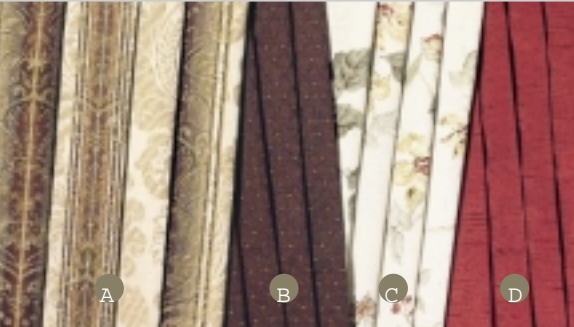
* Actual filled LP capacity is 80% of listing due to safety shut-off required on tank.

Choose

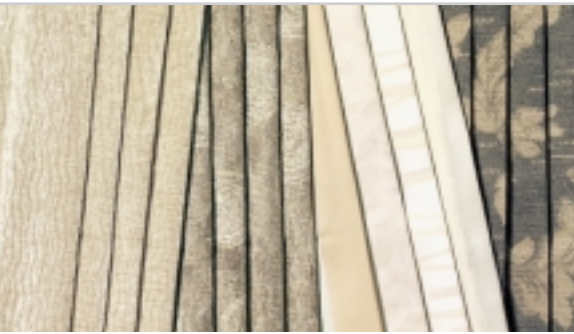
the
details

8

It's time to select some of your own details. It's time to be picky. Our designers have carefully appointed the Diplomat LE models to provide an array of styles, colors and fabrics. Now it's up to you. Select from the options before you and hit the road in style today. Consider the possibilities and choose your details.



Claret



Oak Glen



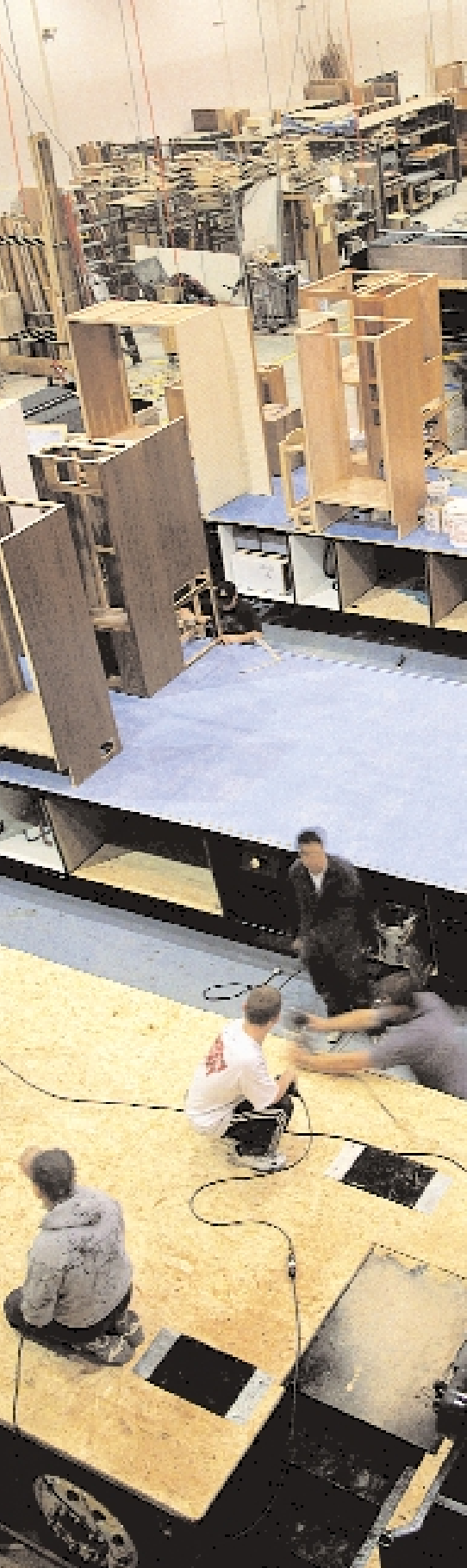
Flint



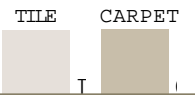
Fairway

A Sofa B Chair C Bedspread D Accent

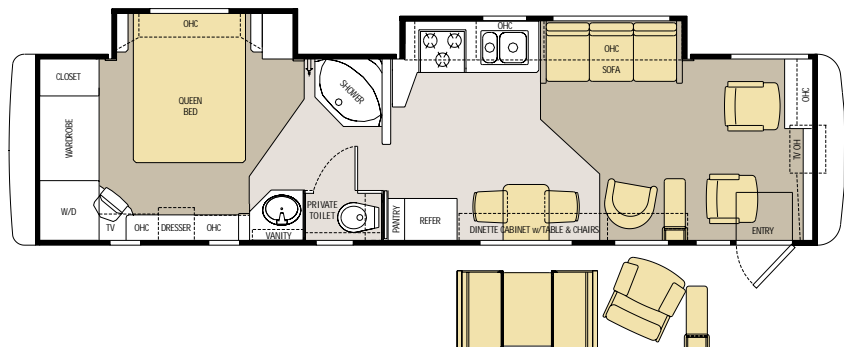
Note: While the color of the motorhome's exterior and the interior fabrics shown in this sales brochure are fair and reasonable depictions, they may not be an exact match of the actual colors. Due to product improvements, changes during the model year and/or transcription errors that may occur, information presented within this brochure may not be accurate at the time of your purchase. If certain information is significant to your purchasing decision, please confirm the information with your dealer prior to submitting your order.



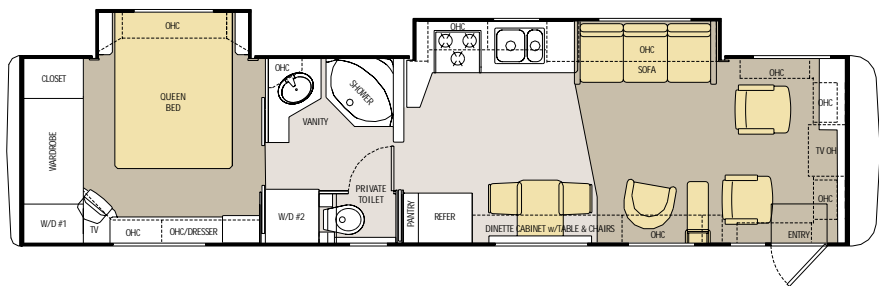
Floorplans



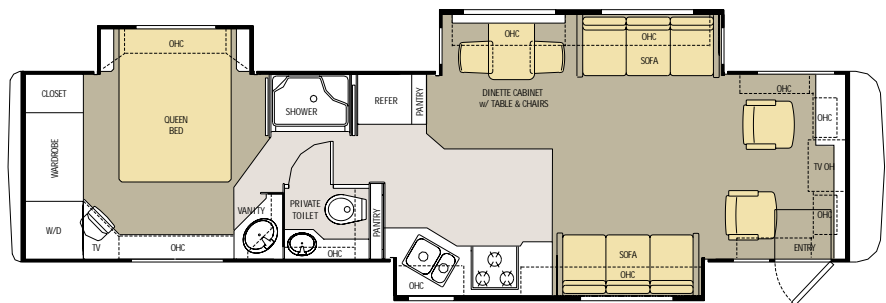
36 PBD



38 PBD



38 PST



Our customers are our guides. Listening to their ideas has inspired some of our most innovative product enhancements. We look forward to hearing from you.

