

# CARRI-LITE

By Carriage



2009



THE WORLD'S FINEST FIFTH WHEELS SINCE 1968



The 2009 Carri-Lite 36XTRM5, still the only true 5-slide out fifth wheel in the marketplace. This coach, featured in our Cherry wood and Aspen decor package, maximizes storage and kitchen workspace while still allowing a huge entertainment center/desk and plenty of open space to host friends.



[WWW.CARRIAGEINC.COM](http://www.carriageinc.com)



For 2009 Carriage has added 2 plush recliners to the 36XTRM5 and every sofa comes with a queen air mattress hide-a-bed. Note the stainless steel deep bowl kitchen sinks at left and the DuPont Corian countertops. Carriage brought household names into the RV market and continues to apply trustworthy brands to your home on the road.







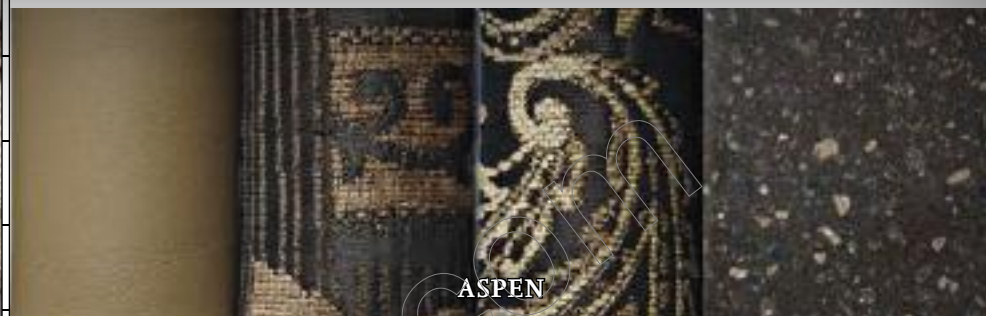
A gorgeous shot of our 2009 36MAX1. Carriage introduced the industry's first and only full-wall (30' long!) slide out to the market less than a year ago to amazing results. The process has given Carriage the ability to offer motorhome type floor plans in our luxury fifth wheels. This first edition, the MAX1 has everything; a walkthrough bathroom (when slides are in, bed access!), massive entertainment center with storage, and a gourmet kitchen. A side-by-side washer and dryer even fits into the slide for maximum laundry abilities when travelling. Shown in River Canyon decor and Cherry wood







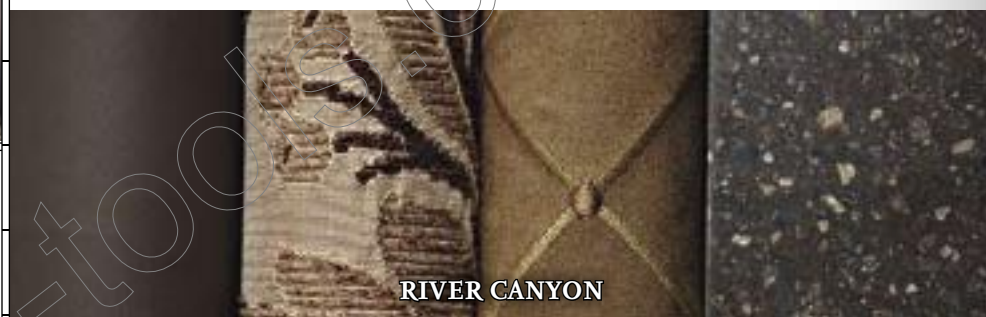
36XTRM5 BEDROOM IN ASPEN DECOR AND CHERRY WOOD



ASPEN



36SBQ BEDROOM IN SEDONA DECOR AND GLAZED MAPLE WOOD



RIVER CANYON



SEDONA



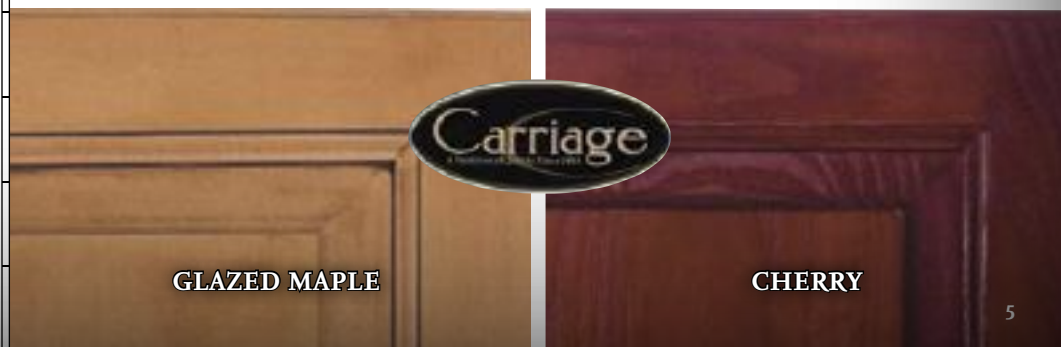
36MAX1 BEDROOM IN RIVER CANYON DECOR AND CHERRY WOOD



Detail of Carri-Lite Cabinet Hardware



ZODIAC QUARTZ  
EMERALD PACKAGE ONLY



GLAZED MAPLE

CHERRY





# CARRI-LITE

## EMERALD LED Carriage



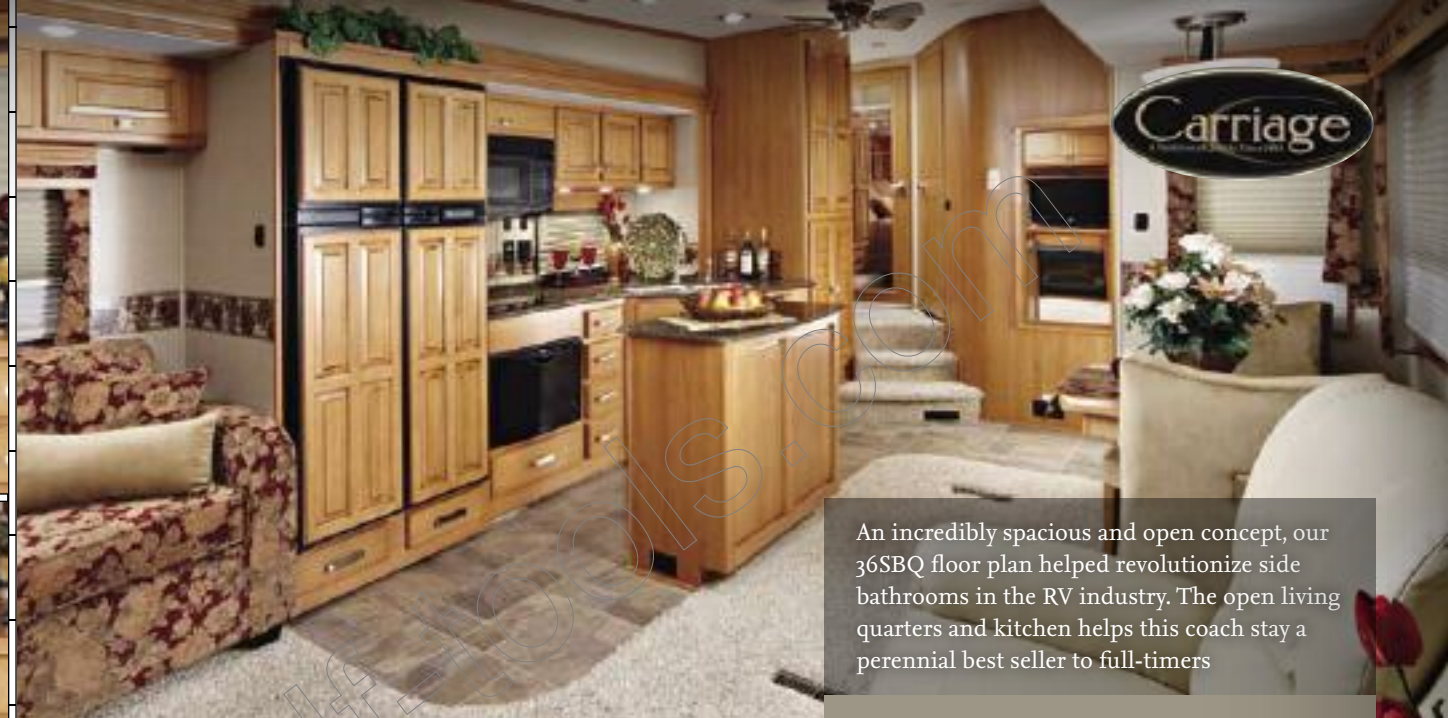
By popular demand, Carriage gives you its Emerald Edition Carri-Lites once again. The Emerald package has both elegant and user-friendly features in it (complete list on back page) and this picture shows some of the items like Dupont Zodiac Quartz countertops, the 12 cubic foot refrigerator, and the inset picture shows the dramatic exterior Emerald paint scheme. This unit shows our 36SBQ with Sedona decor and Glazed Maple wood.







LCD TELEVISION LOWERS OUT OF SIGHT WHEN NOT IN USE (SEE BELOW).



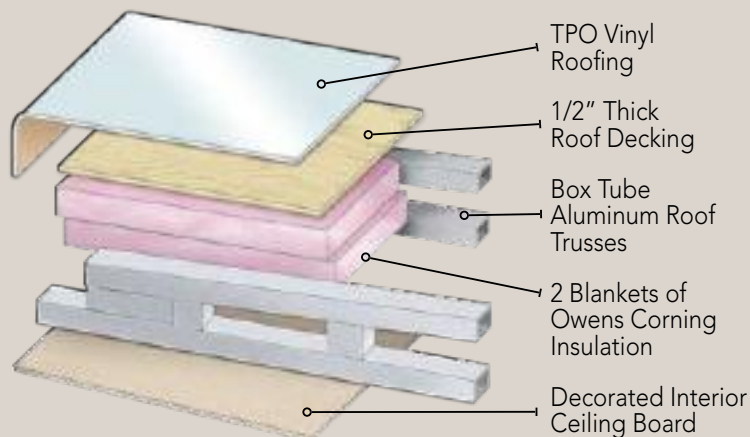
An incredibly spacious and open concept, our 36SBQ floor plan helped revolutionize side bathrooms in the RV industry. The open living quarters and kitchen helps this coach stay a perennial best seller to full-timers



Featuring both an electric stove with flush-mounted burners and a convection microwave oven, the kitchen of all 2009 Carri-Lites is made for cooking and storage. A swivel faucet and deep bowl stainless steel sinks make food prep a breeze. Shown with optional dish drawer.



## Roof Construction - R16



### CARRIAGE "H-SEAL"

**FEATURE:** Two seals double the chance at sweeping away moisture and debris while sealing off the elements twice as much as our competitors.

**BENEFIT:** Two seals are better than one. Our seals are also made of a denser material that will seal tighter than the competition.



### ALUMINUM ROOF TRUSSES 16" ON CENTER, WITH A 5" CAVITY AND A 3" CROWN

**FEATURE:** Household construction with household fiberglass insulation.

**BENEFIT:** 16" centers and 1/2" plywood allow for a walkable roof, while the insulation maximizes the AC efficiency. Lighter weight than wood. Aluminum trusses with no chance of rotting or rusting. Also breathes the best, with no condensation buildup.



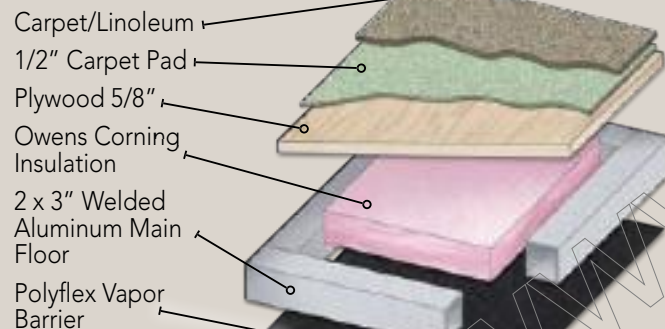
### 2" x 2" ALUMINUM STUDS WELDED ON 16" CENTERS

**FEATURE:** We design and build our walls to have a superior strength and durability. Every aluminum stud is welded on 16" centers.

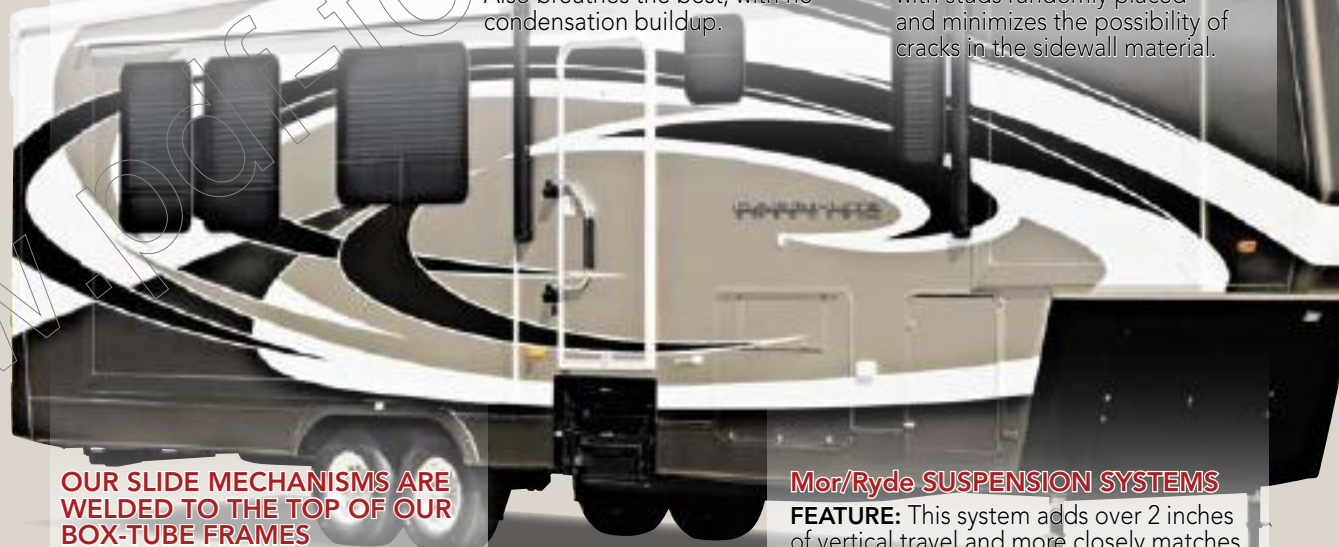
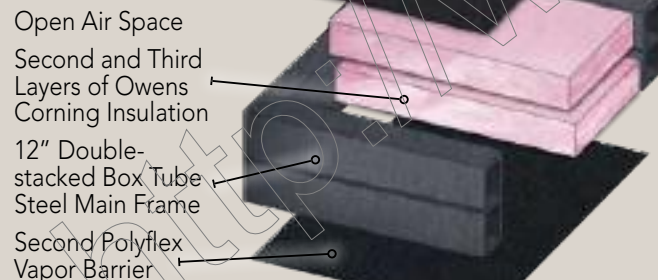
**BENEFIT:** This construction technique provides improved support for interior overhead cabinets, reduces the damaging flex that may occur in walls built with studs randomly placed and minimizes the possibility of cracks in the sidewall material.

## Floor CONSTRUCTION - R-24

### MAIN FLOOR:



### SUB FLOOR:



### OUR SLIDE MECHANISMS ARE WELDED TO THE TOP OF OUR BOX-TUBE FRAMES

**FEATURE:** No "holes" are cut into mainframe that will weaken the structure of your coach.

**BENEFIT:** With a more superior frame than the competition, Carriage's frames become the strongest, after the competition torches 2, 4, 6, or even 8 holes to get their slide mechanisms to extend out past their frames.

### Mor/Ryde SUSPENSION SYSTEMS

**FEATURE:** This system adds over 2 inches of vertical travel and more closely matches the suspension of the tow vehicle.

**BENEFIT:** Better ride quality, a 30% improvement of smoothing out road abnormalities, making it easier on you and the contents of your coach.



Carri-Lite shown with optional paint.



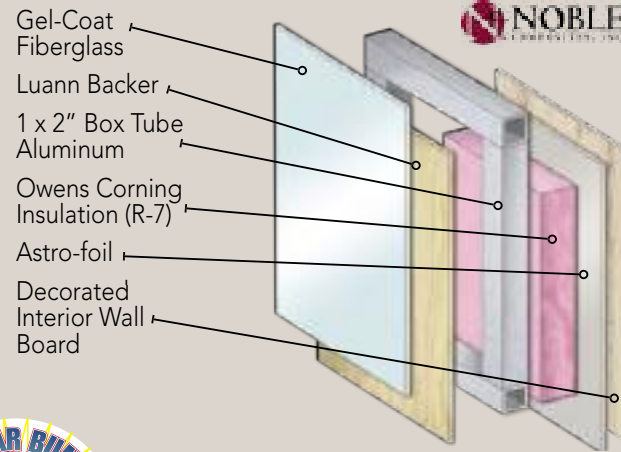
## OWENS CORNING FIBERGLASS INSULATION

**FEATURE:** Spun fiberglass insulation is recognized as the premium insulating material in both the residential and RV industries.

**BENEFIT:** Fiberglass insulation traps dead air more efficiently than styrofoam insulation and breathes easier than styrofoam, increasing insulation capabilities.



## SIDEWALL CONSTRUCTION -R-15



### CARRIAGE EXCLUSIVE WARRANTY. THE BEST WARRANTY AVAILABLE PERIOD

**FEATURE:** 2yr/5yr warranty. This is the best warranty in the RV industry.

**BENEFIT:** no exclusions for full timers. Unlike our competition, we want you to enjoy our coaches year-round.

### WE DESIGN AND MANUFACTURE OUR FRAMES

**FEATURE:** In-house frame shop allows us to build a frame for a floor plan, not the opposite.

**BENEFIT:** We offer a stronger frame than the standard I-beam or C-Channel frame our competitors use. We also have the confidence to offer an exclusive 5 year frame warranty. The BEST warranty in the RV Industry.

### Mor/Ryde PIN BOX

**FEATURE:** rubber equalizer built into the king pin.

**BENEFIT:** Eases the front-to-back chatter and "porpoise" motion typically found pulling a fifth wheel.



## CARRIAGE TRAVEL CLUB

Enjoy RVing with fellow Carriage owners with our thousands of Travel Club members. Free first year membership with your new Carri-Lite, the club has regional clubs and gatherings as well a newsletter and access to our on-campus 20-site campground, service center and an annual "Grand National" rally. One of the longest lasting and largest enrolled clubs in the industry, The Carriage Travel Club will add memories to your RVing experience and allow you to create new ones.



## 11 GREAT QUESTIONS—DOES THE COMPETITION HAVE...

1. Box tube steel chassis?
2. Halogen dimming lights in 3 zones?
3. 40 years of high-end RV tradition?
4. The industry's only 2/5 full time warranty?
5. Plywood floors, 5/8" thick?
6. Dual floor construction w/no holes in frame?
7. TRUE gel-coat fiberglass standard?
8. Fiberglass insulation or Styrofoam?
9. 16" sidewall centers?
10. Household materials or RV knockoffs?
11. Frameless flush-mounted windows?



YOUR CARRI-LITE HAS ALL OF THESE GREAT ITEMS!





## CARRIAGE MAKES RVING EASY



### REAR JACKS

**FEATURE:** Power electric leveling jacks standard on 2009 Carri-Lite.

**BENEFIT:** Ease of setup and stabilization at the push of a button.

Also note power electric front jacks with snap pins.



### WASTEMASTER SYSTEM

**FEATURE:** Integrated 25' hose and valve waste disposal system.

**BENEFIT:** Cleanliness and Convenience when dumping tanks. Extremely sanitary and environmentally friendly also.



### DOCKING CENTER

**FEATURE:** All-in-one exterior hookup station, including electric dump valves for holding tanks.

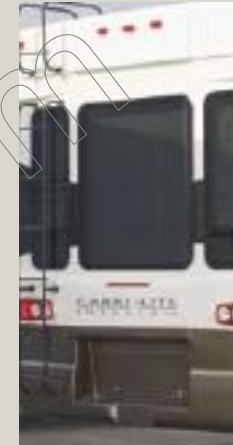
**BENEFIT:** Makes camp setup easier and hides ugly connections with the under mounted access panel.



### AWNING AND ACCESS

**FEATURE:** Power electric awning, a peep-hole at the entrance door and 10" step treads

**BENEFIT:** The easiest awning in the industry, privacy and big-foot-ready entry steps all make RVing simple.



### WINDOWS

**FEATURE:** Frameless windows from HEHR

**BENEFIT:** No trim rings that can dry-rot, no black streaks and the best look at the campground.

## STORAGE: IS THE INDUSTRY'S MOST ENOUGH FOR YOU?



### CARRIAGE REAR EXCLUSIVE! FULL PASS THROUGH BASEMENT

**FEATURE:** Exclusive rear exterior storage featuring a fully carpeted storage area with three access doors.

**BENEFIT:** Provides up to 60% more storage area than many of our competitors. This also makes the Carriage fifth wheels the only fivers on the market that you can balance the cargo load between the front and the rear of the unit, while also increasing towability



### FRONT BASEMENT

**FEATURE:** Double door front basement

**BENEFIT:** Wide storage with drop down bottom door for full access



### EXTERIOR E CENTER WITH LCD TV AND CD/DVD STEREO

**FEATURE:** Samsung 19" LCD TV and CD/DVD stereo

**BENEFIT:** Enjoy the outdoors and still have access to your favorite entertainment (Emerald package only).

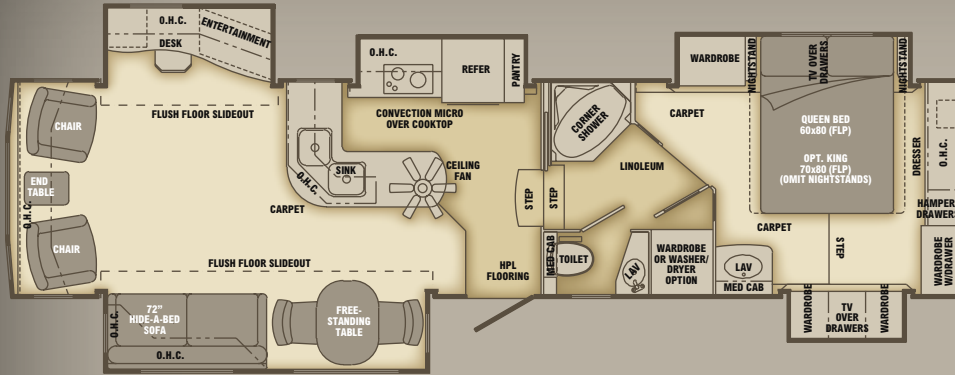


### PULL-OUT LP TRAY

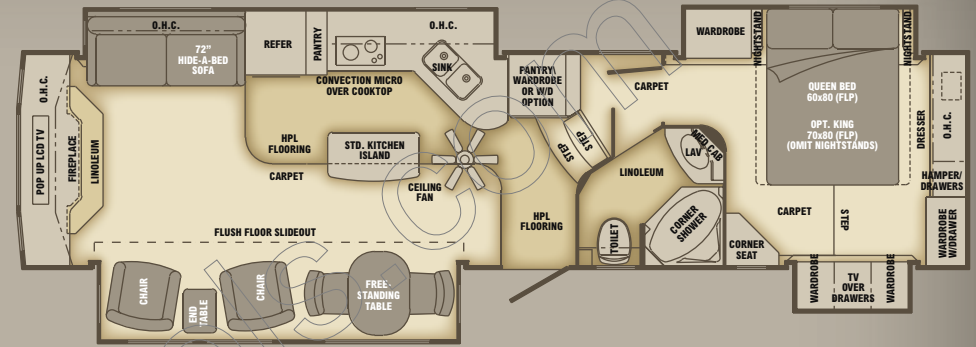
**FEATURE:** Sliding LP tray with double 40# bottles

**BENEFIT:** Exterior access tanks at chest level make LP fill-ups a breeze

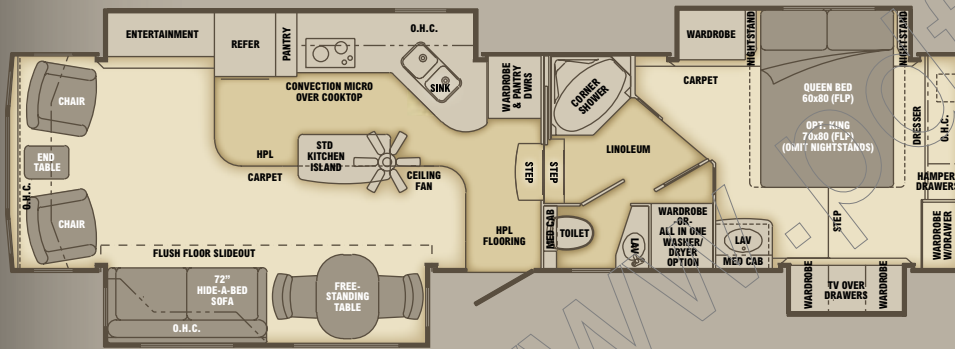




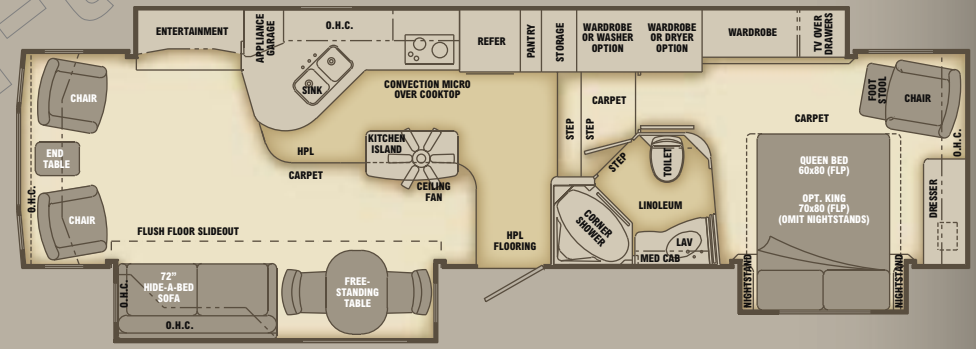
36XTRM5



36SBQ



36FDQ



36MAX1

| CARRI-LITE                    | CL 36XTRM5 | CL36FDQ | CL36MAX-1 | CL36SBQ |
|-------------------------------|------------|---------|-----------|---------|
| Approx. Exterior length       | 36' 11"    | 36' 11" | 36' 11"   | 36' 11" |
| Approx. Exterior width        | 100"       | 100"    | 100"      | 100"    |
| Approx. Exterior Height w/AC1 | 12' 8"     | 12' 8"  | 12' 8"    | 12' 8"  |
| Approx. Dry Axle Weight (lb)* | 11,210     | 11,070  | 11,125    | 11,200  |
| Approx. Hitch Weight (lb)*    | 3,100      | 3,015   | 3,175     | 3,000   |

| CARRI-LITE                              | CL 36XTRM5 | CL36FDQ    | CL36MAX-1  | CL36SBQ    |
|---|------------|------------|------------|------------|
| Approx. Total Dry Weight (lb)*          | 14,310     | 14,085     | 14,300     | 14,200     |
| Approx. Average Load Capacity (lb)*     | 2,790      | 2,930      | 2,875      | 2,800      |
| Axles (number of)                       | 2          | 2          | 2          | 2          |
| Fresh Water Capacity w/ water heater ** | 112 Gal.   | 112 Gal.   | 112 Gal.   | 112 Gal.   |
| Black/Gray Holding Tank Capacity        | 32/72 Gal. | 32/72 Gal. | 32/72 Gal. | 32/72 Gal. |

\* Above listed weights are actual units that include all slide out rooms and all popular options ordered on most coaches. These weights are provided as a guideline only. The actual weight of each individual unit (all units are weighed as they come off the production line) is posted inside each vehicle.

\*\* Fresh water capacity includes the combined capacity of the fresh water tanks and the water heater. NOTE: Emerald option will add 550 lbs to unit



### **"BEST BUILT" PACKAGE:**

- 110V recept in basement (DS)
- Dual 40# LP bottles with auto change over
- Greaseable shackles
- Frameless Hehr flush-mount windows
- MOR/ryde® rubber equalizer system
- Nev-R-Lube Axles
- Rear second basement
- TV outlet in basement (DS)
- Wastemaster tank drain system with integrated valve

### **"LUXURY" PACKAGE**

- 2 swivel leather recliners, 2 fully upholstered dinette chairs and 2 folding padded dinette chairs
- 3M® Whole house water filter
- 19" Samsung LCD TV/DVD player in bedroom
- 37" Sony LCD TV
- Decorative mirror and coat hooks at entry
- Floor safe
- Pillow top mattress
- Sony AM/FM/CD/DVD home theatre system 5.1 with subwoofer
- Three zone halogen lighting with dimmer switches

### **"PERFORMANCE" PACKAGE**

- 4-step entry
- Battery tray
- Corian countertops in kitchen and bath
- Hardwood cabinet stiles
- Hide-a-bed sofa with air mattress
- LP sliding tray
- MOR/ryde® pin box
- Electric rear stabilizing jacks

### **INTERIOR**

- Arlington cherry cabinetry
- Ball bearing drawer roller guides
- Day/night shades
- Dirt Devil® Central Vacuum system
- Halogen lighting @ kitchen overhead cabinets
- Hardwood raised panel doors and drawers
- Satellite prep
- Soft touch vinyl ceiling
- Wood grab handle at entrance

### **INTERIOR OPTIONS**

- Arizona Room Slide-out
- Glazed Maple cabinetry

### **SYSTEMS**

- 12 gal. gas/electric water heater with DSI
- 12V power vent in bathroom and stool room
- 15,000 BTU ducted air conditioner with heat pump - Carrier®
- 42,000 BTU pilotless Suburban furnace
- 50 amp electrical service
- 50 amp marine power cord
- Enclosed heated and insulated holding tanks and valves with separate heat duct
- Generator prep (auto change over)
- Halogen lights with dimmers in living room, kitchen and bedroom ceilings
- Heavy duty 80 amp solid state converter
- Monitor panel (full systems)
- Prep for 2nd A/C bedroom
- Universal docking center (elec. dump valves, water hook-ups, cab/sat con, coil hose, pump switch, light, black water holding tank flush kit)
- Washer/dryer prep. with plumbing cover
- Washer/dryer: Splendide Ariston 2 piece (CL36MAX1 only)
- Water system (demand, large capacity)
- Water heater by-pass kit
- Winegard TV antenna with built-in power booster

### **SYSTEMS OPTIONS**

- Fantastic® Vent with wall switch
- Fantastic® Vent with thermostat and rain sensor
- 12V battery installed
- Generator Onan® 5,500 watt Marquis gold
- Solar panel prep
- Washer Dryer, Splendide® 2000s combo
- Washer Dryer, Kenmore® 2pc (NA 36MAX1)
- 13,500 BTU Carrier® AC (bedroom)

### **CONSTRUCTION/SAFETY AND RUNNING GEAR**

- 5/8" tongue and groove plywood floor
- 5" aluminum trussed roof 16" o.c.
- Dexter axles with 2-1/2" brake system - ventilated
- Exclusive drop frame construction
- Flush floor on main slide out rooms
- Front electric power jacks
- Full 2" wall made with box tube aluminum
- LT235/85R16 "G" range Goodyear® tires
- MOR/ryde® pin box
- Roof decking 1/2" exterior grade plywood
- Snap pins @ front jack legs
- Spare tire and wheel (recessed)

### **EXTERIOR**

- 110V exterior recept (GFI)
- Basement storage with 12V lights
- Custom molded one piece front and rear gelcoat fiberglass caps
- Egress window (bedroom)
- Felt lined exterior compartments
- Gelcoat fiberglass exterior sidewalls
- GL20 solar tinted safety glass windows
- Large 32 cubic foot front compartment for generator
- Mid ship turn signals
- Security lights (2) @ front corners
- Storage shelved/hose rack in front generator compartment
- Patio light - 12V
- Pullout grab handle @ entry door

### **EXTERIOR OPTIONS**

- Accessory receiver with bike rack
- Dual pane windows
- Manual Box awning over AZ room
- Rear back-up sensor with remote display
- Slide-out cargo tray (NA CL36MAX1)

### **ENTERTAINMENT**

- Cable TV hookup
- Phone jack (2)
- Satellite prep (RG-6 cable)
- See luxury package for electronics details

### **KITCHEN**

- 10 cu ft. Norcold® Refer with raised panel wood doors
- 2-burner electric cooktop, flush-mount
- Ceiling fan
- Convection microwave oven vented to outside
- Faucet with lift off spray head
- HPL floor at kitchen
- Under mounted deep double bowl stainless steel sink with 2 covers
- Wood dinette table with self storing leaf and 2 chairs and 2 folding chairs

### **KITCHEN OPTIONS**

- 2-burner gas cooktop
- Fisher/Paykel dish washer drawer
- Refrigerator 4 door: Norcold® 1210LR
- Split level kitchen-island cabinets with 2 bar stools (NA CL36XTRM5)

### **LIVING ROOM**

- 2 leather recliners, wall hugging
- 6'2" slide-out height in main slide-outs
- Hide-a-bed sofa with pillows
- Wooden free standing end table

### **LIVING ROOM OPTIONS**

- 70" home theater seating with 80" rear hide a bed sofa (NA 36SBQ)
- Fireplace

### **BATHROOM**

- Corian® countertops - lavatory
- Drawer storage @ vanity
- Heat and A/C ducts in stool room
- Porcelain stool
- Rain shower head
- Shower skylight with shade
- Under mounted bathroom sink

### **BEDROOM**

- 12V Fantastic fan
- 19" LCD/TV Samsung®
- Bedroom night stand(s) with queen bed
- Cedar lined wardrobes
- Clothes hamper - built in
- Comforter with pillows
- Crown molding
- His and hers halogen reading lights

### **BEDROOM OPTIONS**

- King 80FLP (all models)

### **INSULATION VALUES:**

- Floor R-24, Roof/ends R-16, Walls R-15

### **OPTIONS**

- Astro-foil insulation package, adds R-9 to roof, adds R-7 to ends

### **INTRODUCING THE 2009 EMERALD PACKAGE UPGRADE**

- 2nd Carrier® AC 13.5K ducted low profile in bedroom
- 12 cu ft. Norcold® refrigerator with side by side doors
- Bose bedroom CD stereo alarm clock
- Carefree Travel-R® electric awning with Uniguard
- Exterior E-center with LCD TV and DVD stereo
- Fantastic fan with wall switch in kitchen
- Full paint scheme with raised emerald logo
- Independent front jacks
- MOR/ryde® independent suspension and disc brakes
- Power push button Winegard television antenna
- Rear Ultra Fab electric leveling jacks
- Solar prep
- Zodiac quartz countertops

CARRIAGE INC. IS PROUD  
TO USE PRODUCTS FROM THESE  
MANUFACTURERS



Williamsburg Furniture



POST OFFICE BOX 246  
MILLERSBURG, INDIANA 46543  
(574)-642-3622  
WWW.CARRIAGEINC.COM

PRODUCT DISCLOSURE AND DISCLAIMER - The product information contained herein is believed to be accurate at the time of posting. However, during the model year, it may be necessary to make revisions. Carriage, Inc., reserves the right, at any time, and without prior notification, to make all such changes, including changes in prices, colors, materials, equipment and specifications, as well as the addition of new features and the discontinuance of existing features. Selected decorator items used in photographs are not part of the product. Therefore, please consult with your Carriage, Inc., dealer to confirm the existence of any materials, design or specifications that are material to your purchase decision. Carriage, Inc., assumes no responsibility for any error in type, print, or reproduction of specifications, designs and specifications of outside suppliers, or colors utilized in printing.

YOUR NEAREST CARRIAGE DEALER: