

# LEPRECHAUN



**Coachmen**  
Recreational Vehicles

50<sup>th</sup> ANNIVERSARY

A division of Forest River, Inc.



YOUR UNIQUE STYLE DEMANDS A STEP ABOVE... AND LEPRECHAUN DELIVERS.

LEPRECHAUN CLASS C MOTORHOMES



319DS shown with Ciera Cherry cabinets and Cognac décor



### **BETTER STYLE.**

- Hardwood cabinet door and drawer fronts
- Upgraded solid surface galley countertops
- High quality furniture and fabrics
- Large double door refrigerator
- Congoleum® Designer Carefree Flooring



## LEPRECHAUN CLASS C MOTORHOMES

The Coachmen Leprechaun offers you better construction and interior appointments than others in its class. Generations of Leprechaun owners appreciate it's long list of safety and convenience features. Others will admire your ability to differentiate yourself with Leprechaun's styling. Treat yourself to an expansive list of standard features and rich appointments including night shades, raised panel hardwood cabinet doors and upgraded flooring and furniture. As Coachmen celebrates 50 years of providing generations a product they can rely on, you'll take comfort in owning one of the top selling brands in the nation.

**BETTER COMFORT. BETTER STYLE. BETTER VALUE.**



- A** Jackknife sofa • Wrap around dinette • Residential hardwood cabinet doors
- B** 60"x80" residential queen bed • Large wardrobes and shirt closets • Pleated night shades • TV prep • Even Cool ducted A/C system (most models)
- C** Optional exterior privacy windshield cover • Optional molded front cap
- D** Porcelain foot flush toilet • Medicine cabinet • Composite bowl sink





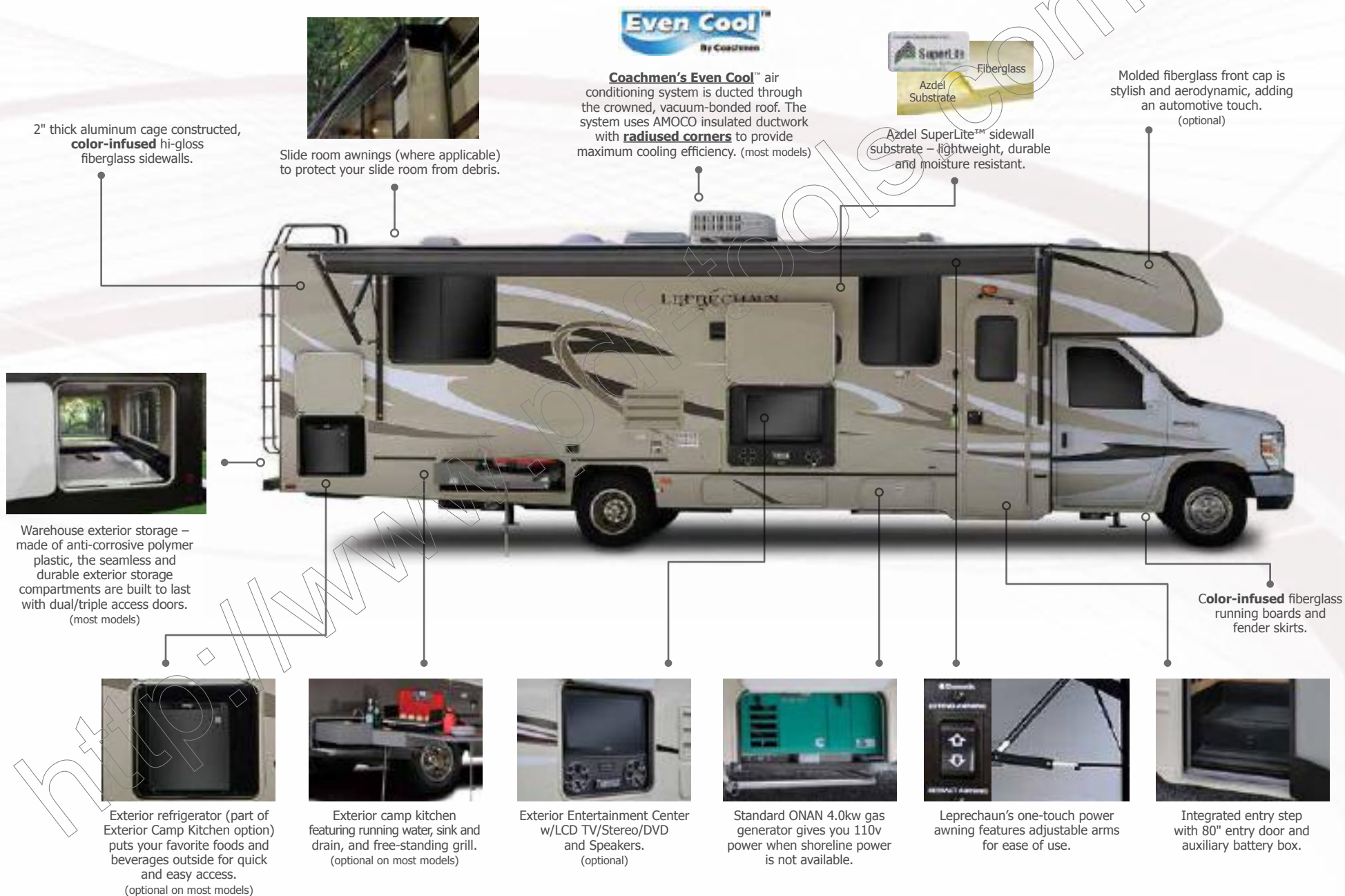
### **BETTER COMFORT.**

- Residential microwave or optional convection oven
- Non-basement construction – smooth transition from cab to living area
- Optional child safety net in 57"x95" cab over bunk
- Single child safety tether and occupancy seat safety belts
- Optional swivel driver & passenger seats (Ford only)

**319DS shown with Ciera Cherry cabinets and Cognac décor**



# LEPRECHAUN EXTERIOR ADVANTAGES



# FEATURES

## WARRANTY

- Motorhome – 12 Month/ 12,000 mile limited warranty
- Ford Chassis – 36 month/ 36,000 mile bumper-to-bumper warranty
- Ford Powertrain – 60 month/ 60,000 mile warranty
- Chevy Chassis – 36 month/ 36,000 mile bumper-to-bumper warranty
- Chevy Powertrain – 60 month/ 100,000 mile warranty
- Travel Easy Roadside Assistance

## AUTOMOTIVE/EXTERIOR/CONSTRUCTION

- 55-Gallon Fuel Tank
- Driver & Passenger Air Bags
- Deluxe Chassis Package
- Cruise Control
- Tilt Steering Wheel
- Dash Air Conditioning
- Power Windows & Locks
- Keyless Entry (Ford E450 Chassis Only)
- Exterior Upgraded Mirrors
- 5,000 lb. Towing Hitch w/7 Way Plug
- Laminated 2" Steel Floor
- Vacuum-Bond Laminated 2" Aluminum Framed Sidewalls
- Vacuum-Bond Laminated Aluminum Framed Crowned Roof w/TPO Membrane
- Azdel "Superlite" Composite Sidewall Substrate
- Integrated Steel Entry Step Box w/Built-in Easy Access Battery Compartment
- 80" Radius Entrance Door w/Window & Deadbolt Lock
- Color Infused High Gloss Exterior Fiberglass Sidewalls
- Color Infused Fiberglass Running Boards & Fender Skirts
- Exterior Vinyl Graphics
- Roto-Cast Extra Large Rear Warehouse Storage Compartment
- Plasti-Cote Metal Side Trunk Boxes
- Steel Rear Tube Bumper
- Stainless Steel Wheel Inserts
- Slide-out Awning Toppers
- Power Awning with Vinyl Weather Guard
- Aluminum Body Side Moldings
- Smooth Exterior Range Vent
- Rear Ladder
- Exterior LED Running & Tail Lights
- Exterior Rear Compartment Light

## INTERIOR APPOINTMENTS

- Ciera Cherry Wood Grain
- Sealed/Seamless Thermofoil Dinette, Bath & Bedroom Countertops
- Molded Solid Surface Kitchen Countertop
- Congoleum "Designer Carefree" Flooring Throughout
- Hardboard Ceiling Panels (Soft Touch Look)
- Residential Roller Bearing Metal Drawer Glides
- Raised Panel Upper/Flat Panel Lower Cabinets

- Pleated Night Shade Window Treatments
- Tinted Radius Slider Windows – Safety Glass
- ODS Cab Over Window
- Reclining Pilot & Passenger Seats
- Booth Dinette (NA 220/319)
- U-Shaped Dinette (220/319)
- Single Child Tether at Forward Facing Dinette
- Jackknife Sofa (NA 220)
- Residential Hardwood Cabinet Doors & Drawers w/Hardware
- Glass Insert Overhead Cabinet Doors in Select Areas
- Residential Bathroom Door
- Upgraded Slide Out Fascia Boards
- Interior Safety Grab Handle at Entry Door
- Vinyl Padded Up and Angle Pads
- Magazine Rack Over Entrance Door
- Shirt Closet and/or Wardrobe

## INTERIOR EQUIPMENT

- Touch Screen AM/FM/CD Dash Radio with Integrated Color Back-up Monitor
- 39" TV with Lift Stereo/2 Spkrs/Sub. (319)
- 32" Pull Down TV in Dinette Overhead (280/317) (opt)
- Seat Belt at Every Occupancy Seat
- TV Antenna w/Rotator Package
- Propane Leak Detector/Alarm
- Smoke Detector/Alarm
- Carbon Monoxide Detector/Alarm
- Fire Extinguisher
- Bedroom TV Backer & Connections

## GALLEY

- Residential Size, Overhead Microwave Oven
- Large Double Door Refrigerator with Refer Insert
- Composite Round Bowl Sink w/Cover (220)
- Composite Double Bowl Sink w/Cover (NA 220)
- Power, Lighted Range Hood
- 3-Burner Cooktop with 16" Oven
- Hi-Rise Kitchen Faucet
- "Dream Dinette" (NA 220/319)
- Kitchen Flip Up Extension Table (220/280)
- Kitchen Wall Border

## BATH AND WATER

- City Water Fill Ports
- Power Vent Fan
- Demand Water Pump
- Composite Single Bowl Lav Sink w/Faucet
- Upgraded Shower Head with Flexible Hose Extension
- Vanity Mirror
- Frosted Glass Shower Door
- Hand Towel Ring, Toilet Paper Holder, Robe and Towel Hooks
- ABS Molded Shower Surround
- Porcelain Foot Flush Toilet
- 6 Gallon Gas E.I. Water Heater
- Skylight in Shower
- Exterior Shower
- Black Tank Flush w/Trunk Door at Termination
- Tuff-Pex Plumbing Supply Lines

## SLEEPING

- Bunk Beds - 32x74 (320)
- Queen Bed - 60x80
- Cab Over Bunk 57x95
- Residential Style Privacy Door (NA 220QB)
- Upgraded Bedspread
- Upgraded Headboard
- Child Safety Net & Ladder
- Bedroom Curtain (319)
- Cab Over Privacy Curtain
- Fabric Covered Bunks and Cab Over Mattresses

## ELECTRICAL/HEATING/AC

- 30 amp Power Cord
- 55 amp Electronic Converter
- Auxiliary Coach Battery
- Manual Generator Changeover
- 4.0 KW Onan Gas Generator
- 110 volt, GFI Circuit
- Battery Disconnect
- Patio Light
- Wall Mounted Thermostat
- 30K BTU Ducted E.I. Furnace (NA 220)
- 20K BTU Ducted E.I. Furnace (220)
- 13,500 BTU "Even Cool" Ducted Roof A/C
- Campside Recept. and Coax Connection (if possible)
- "Coach Command" Systems Control Center
- Upgraded Ceiling Lights Throughout
- Exterior TV Ready Box
- Lit Acrylic Exterior Safety Grab Handle

## OPTIONS

### LEPRECHAUN 50TH ANNIVERSARY PACKAGE (Mandatory Option)

- Color Infused High Gloss Exterior Fiberglass Sidewalls
- Color Infused Fiberglass Running Boards & Fender Skirts
- Molded Solid Surface Kitchen Countertop
- Child Safety Net and Ladder (N/A w/Front Entertainment Center)
- Back Up Camera & Monitor
- Power Awning w/Vinyl Weather Guard
- Travel Easy Roadside Assistance
- 50 Gallon Fresh Water Tank
- Slideout Awning Toppers
- 4.0 kW Onan Gas Generator
- 60"x80" Queen Bed
- Azdel Superlite Composite Sidewall Substrate
- Tinted Radius Slider Windows – Safety Glass
- Rear Ladder
- Upgraded Sofa
- 5,000 lb. Towing Hitch w/7-Way Plug
- Frosted Glass Shower Door
- Pleated Night Shade Window Treatments
- Roller Bearing Metal Drawer Glides

## LEPRECHAUN LUXURY PACKAGE

- 2-Tone Leatherette Seat Covers
- Upgraded Serta Mattress
- Heated Exterior Mirrors with Remote
- Wood Grain Dash Applique
- Cab Over and Bedroom Power Vent Fan
- Convection Microwave Oven
- Heated Tank Pads
- 6 Gallon Gas/Electric E.I. Water Heater
- Side View Cameras
- Dual Auxiliary Batteries

## STAND ALONE OPTIONS

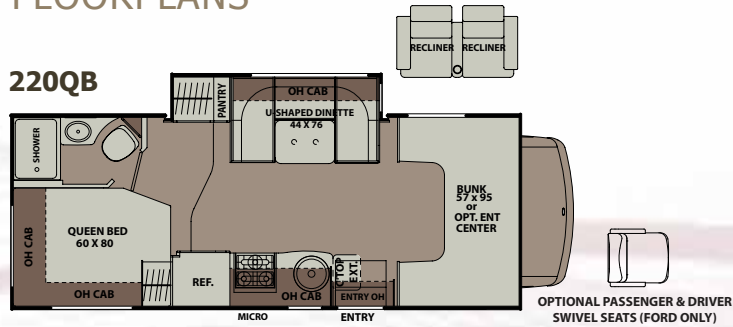
- 32" Swing Arm TV w/ DVD – Coach (NA 319)
- Front Entertainment Center w/ 32" TV, Stereo, 4 Speakers and Subwoofer (NA 319)
- 24" TV & DVD Player – Bedroom (N/A 220/320)
- 15" TV & DVD Player – Bedroom (220/320)
- 39" TV on Electric Lift and DVD Player (Mandatory 319)
- Exterior Entertainment Center - 32" TV & Stereo System with DVD player (317/319)
- Exterior Entertainment Center – 24" TV & Stereo System with DVD player (220/280/320)
- Bunk House Entertainment Package (320) (32" Coach TV with DVD player & 2 Bunk Bed TV's with DVD Players)
- Exterior "Camp Kitchen" Refer/Grill/Sink/Table (280/317/319)
- Dual Recliners (220/280/317/319)
- Driver Swivel Seat (Ford Only)
- Passenger Swivel Seat (Ford Only) (NA 280/317/320)
- Exterior Privacy Windshield Cover
- 15,000 Low Pro Air A/C w/Heat Pump
- Electric Fireplace (319)
- "Camping Cozy" Cold Weather Package (Dual Pane Tinted Windows, Heated Tank Pads & Knife Valve at Tank) (NA 320)
- Spare Tire
- Aluminum Rims
- Automatic Hydraulic Leveling Jacks (NA 320)
- Air Assist Suspension (Mandatory 280/317/319/320)
- Molded Fiberglass Front Cap (Mandatory with Full Paint)
- Full Automotive Body Paint – Blue Opal or Fire Opal (Front Cap Option Required)
- Canadian 240Z Compliance (Ford only)
- Canadian Compliance (Speedometer/Lights) (Ford Only)
- CD-MVSA (Ford only)

*Standards and Options subject to change without notice.*

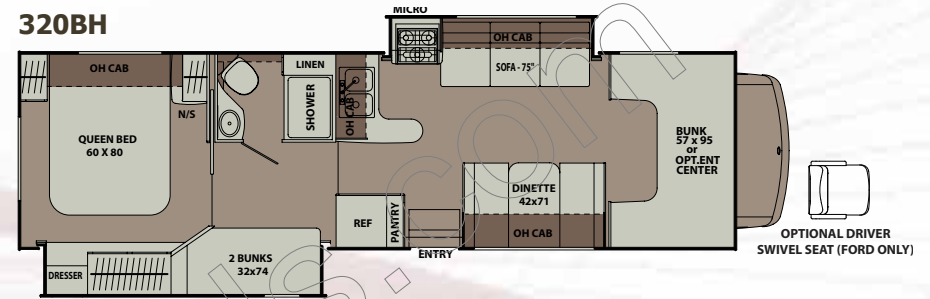


## FLOORPLANS

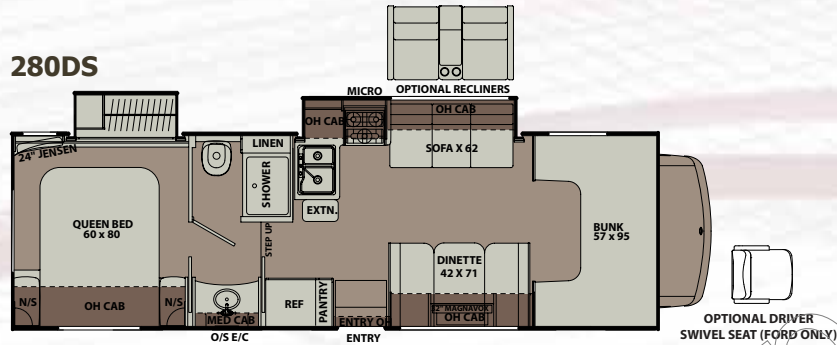
### 220QB



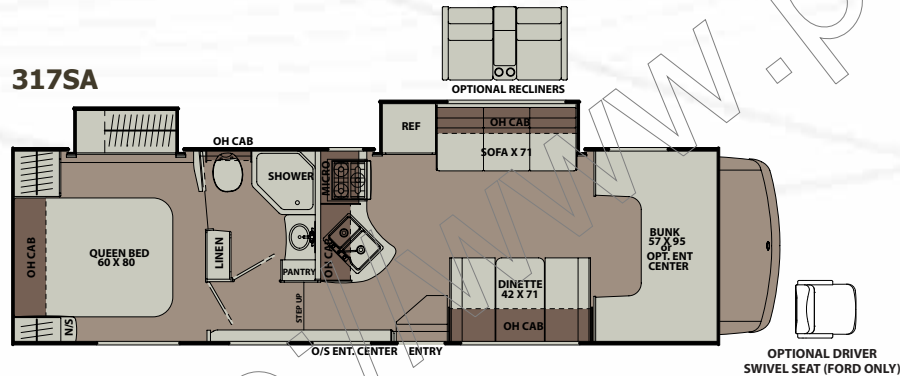
### 320BH



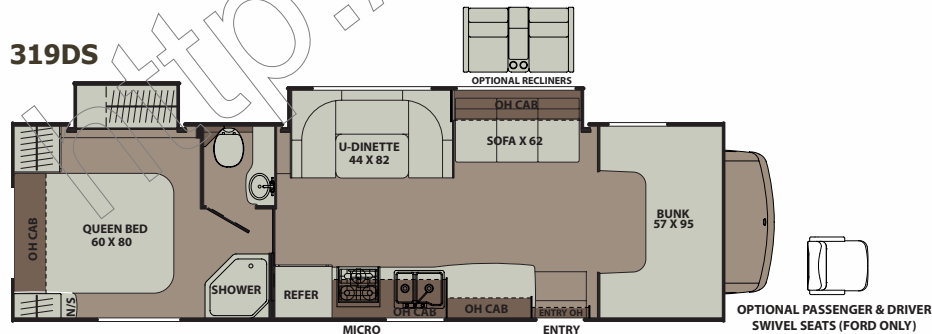
### 280DS



### 317SA



### 319DS



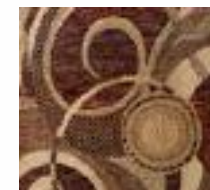
## SPECIFICATIONS

MODEL	220QB	280DS	317SA	319DS	320BH
CHASSIS	4500-CHEVY / 350-FORD	4500-CHEVY / 450-FORD	450-FORD	450-FORD	4500-CHEVY / 450-FORD
ENGINE	V8-6.0L / V10-6.8L	V8-6.0L / V10-6.8L	V10-6.8L	V10-6.8L	V8-6.0L / V10-6.8L
HORSE POWER	324 / 305	324 / 305	305	305	324 / 305
TORQUE	373 / 420	373 / 420	420	420	373 / 420
WHEEL BASE	169" / 168"	199" / 198"	223"	223"	209" / 208"
GVWR* (LBS.)	14,200 / 12,500	14,200 / 14,500	14,500	14,500	14,200 / 14,500
GCWR* (LBS.)	20,000 / 18,500	20,000 / 22,000	22,000	22,000	20,000 / 22,000
CW* (APPROX. LBS.)	10,100 / 10,040	11,622 / 11,400	12,220	12,270	12,065 / 12,135
CCC (APPROX. LBS.)	4,100 / 2,460	2,578 / 3,100	2,280	2,230	2,135 / 2,365
GAWR FRONT (LBS.)	4,600 / 4,600	4,600 / 5,000	5,000	5,000	4,600 / 5,000
GAWR REAR (LBS.)	9,600 / 8,500	9,600 / 9,600	9,600	9,600	9,600 / 9,600
INTERIOR HEIGHT	6' 11"	6' 11"	6' 11"	6' 11"	6' 11"
EXTERIOR WIDTH	8' 4"	8' 4"	8' 4"	8' 4"	8' 4"
EXTERIOR HEIGHT (W/ A/C)	10' 10"	10' 10"	10' 10"	10' 10"	10' 10"
EXTERIOR LENGTH (W/ HITCH)	25' 4" / 24' 10"	30' 10" / 30' 4"	32' 11"	32' 11"	33' 5" / 32' 11"
HITCH WEIGHT (LBS.)	5,000	5,000	5,000	5,000	5,000
FUEL CAPACITY (GAL.)	57 / 55	57 / 55	55	55	57 / 55
LP CAPACITY (LBS.)	68	68	68	68	68
FRESH WATER CAPACITY (GAL.)	50	50	50	50	50
WATER HEATER CAPACITY (GAL.)	6	6	6	6	6
GREY TANK CAPACITY (GAL.)	28	32	32	32	34
BLACK TANK CAPACITY (GAL.)	22	28	29	29	29
EXTERIOR STORAGE (CU. FT.)	92	72	109	100	76
AWNING LENGTH (FT.)	16'	21'	21'	21'	11'

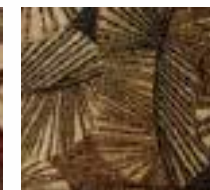
## DÉCOR



COGNAC



REDWOOD



HONEY GLAZE



CIERA CHERRY

GVWR (Gross Vehicle Weight Rating): The maximum permissible weight of the unit, including the unloaded vehicle weight (UVW) plus all fluids, cargo, optional equipment and accessories. For safety and product performance, do not exceed the GVWR. CW (Curb Weight): The weight of the unit without factory or dealer installed options, plus allowance for the weight of full fuel capacity. The "payload capacity" for all other fluids, cargo, occupants, optional equipment, and accessories can be determined by subtracting the CW from the GVWR. GCWR (Gross Combined Weight Rating): The maximum total weight of the loaded unit, plus a tow vehicle. This includes the weight of both the unit and tow vehicle, fuel for each, all other fluids, cargo, occupants, optional equipment and accessories. Wider Widths: Numerous Coachmen floorplans feature the "wide body" design concept, which gives you significantly enhanced interior living space and innovative floorplans. In making your purchase decision, you should be aware that a few states restrict access on some or all roads within the state to vehicle with a maximum 96-inch width, although special road usage permits may be available. Vehicles up to 102-inches in some width are permitted in the vast majority of states. You should confirm the road usage laws in the states of interest to you before making your purchase decision. If width is of concern to you, we invite you to consider the broad array of other Coachmen models offers in the standard 96-inches width. Important Note: All capacities are approximate, and all dimensions are nominal. Coachmen motorhomes are designed to allow for a wide variety of uses, extended trips with two people or short trips with multiple people. Accordingly, each unit allows ample room for sleeping, seating, fluids and cargo. While the customer is the beneficiary of this design, the customer also bears the responsibility to select the proper combination of passengers, cargo, load, and tow vehicle without exceeding the chassis weight capabilities. Consumer may need additional braking capacity to tow loads greater than 1,000 pounds. Seat belts should always be worn for passenger safety. Seat belts are provided at most locations to allow convenience in selecting which seat to occupy. However, it is not intended that all seating positions equipped with a seat belt may be occupied while the vehicle is in motion, without regard to other weight factors. All Coachmen motorhomes are designed to ensure that the number of passengers allowed while the vehicle is in motion will always at least equal the stated sleeping capacity. Though extra seat belts may be provided, for your safety and the proper operation of your vehicle, limit your passengers to the number allowed by the Net Carrying Capacity of your vehicle.



Color-infused Fiberglass (Standard)



Fire Opal  
Full Body Paint (optional)



Blue Opal  
Full Body Paint (optional)



## Free One Year Membership – Coachmen Owners' Association

Coachmen is proud to sponsor the largest manufacturer sponsored camping club in North America ... Coachmen Owners' Association (COA). COA provides a broad breadth of value propositions for our owners including: planned trips/ tours and rallies at bulk rate discounts, free trip routing, free campground directory, free Easy RVing magazine, theme park discounts, fuel discounts, mail forwarding, a dedicated COA web site, local and state club activities and Caravan Chapter membership opportunities. Most importantly, COA enhances the Coachmen ownership and RV lifestyle experience.

**Every new Coachmen RV buyer is eligible for a 1 Year  
FREE membership in the Coachmen Owners' Association.  
It all adds up to an easy ownership experience!**



## Travel Easy™ Roadside Assistance

RVing is easier with Coachmen's Travel Easy™ Roadside Assistance provided FREE the first year of ownership to those who purchase a New Coachmen RV. Administered by Coach-Net, this service provides you with 24/7 operational, technical and emergency road service coverage. Also included is towing, fuel delivery, jump starts, lockout service, tire changes, mobile mechanic and unlimited technical assistance. Anywhere. Anytime. Travel Easy™ is the security of knowing that help is an easy phone call away.



Forest River, Inc. encourages our customers to purchase their Forest River products from a local dealership whenever possible for the following reasons:

- 1) Forest River, Inc. dealers are independently owned and operated businesses so priority service and scheduling is at their discretion and is often provided to customers that purchased their unit at that dealership.
- 2) Purchasing locally allows customers to establish meaningful relationships with a dealer, enhancing the RV experience through assistance with product questions, user tips or RV regulations for your state or country, and much more!
- 3) Canadian customers must meet requirements to bring an RV purchased out of the country to their home. These requirements may involve additional inspections and certifications, taxes and fees. Your local Canadian Dealer is a professional at meeting these requirements.
- 4) Scheduling timely warranty repairs and adjustments through a local dealership provides far greater flexibility and convenience to you, the customer!

It is the goal of Forest River, Inc. that all of our RV owners fully enjoy the RV experience and that customer satisfaction meets or exceeds their expectations!



**Learn More**  
Scan this barcode using  
a QR Reader on your  
smart phone to learn  
more about Forest River.



A Berkshire Hathaway company.

All information contained in this brochure is believed to be accurate at the time of publication. However, during the model year, it may be necessary to make revisions and Coachmen reserves the right to make all such changes without notice, including prices, colors, materials, equipment and specifications as well as the addition of new models and the discontinuance of models shown in this brochure. Therefore, please consult with your Coachmen dealer and confirm the existence of any materials, design or specifications that are material to your purchase decision. 2/14

©Copyright 2014 Coachmen RV a Division of Forest River Inc – All Rights Reserved.



# Coachmen® Recreational Vehicles

50<sup>th</sup> ANNIVERSARY

A division of Forest River, Inc.

423 N. Main Street • P.O. Box 30  
Middlebury, IN 46540

To learn more about Coachmen RV and our products and see how Coachmen is making the easy life easier, call us toll free at **(800) 353-7383**, or visit **www.coachmenrv.com**



Your **LEPRECHAUN** Dealer