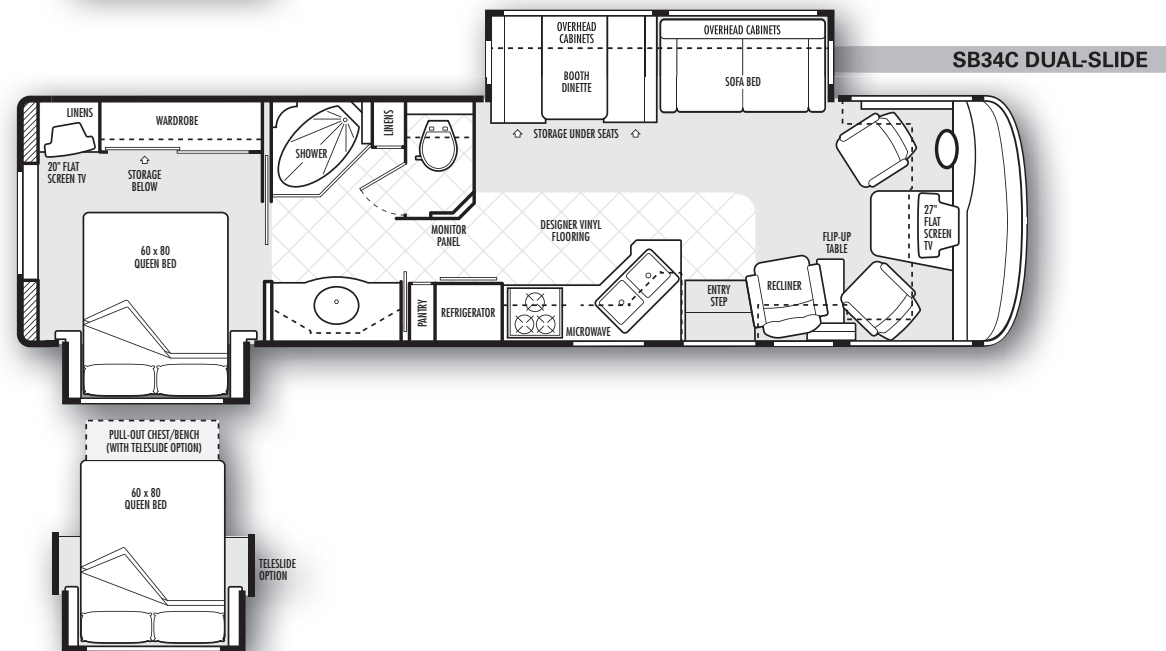
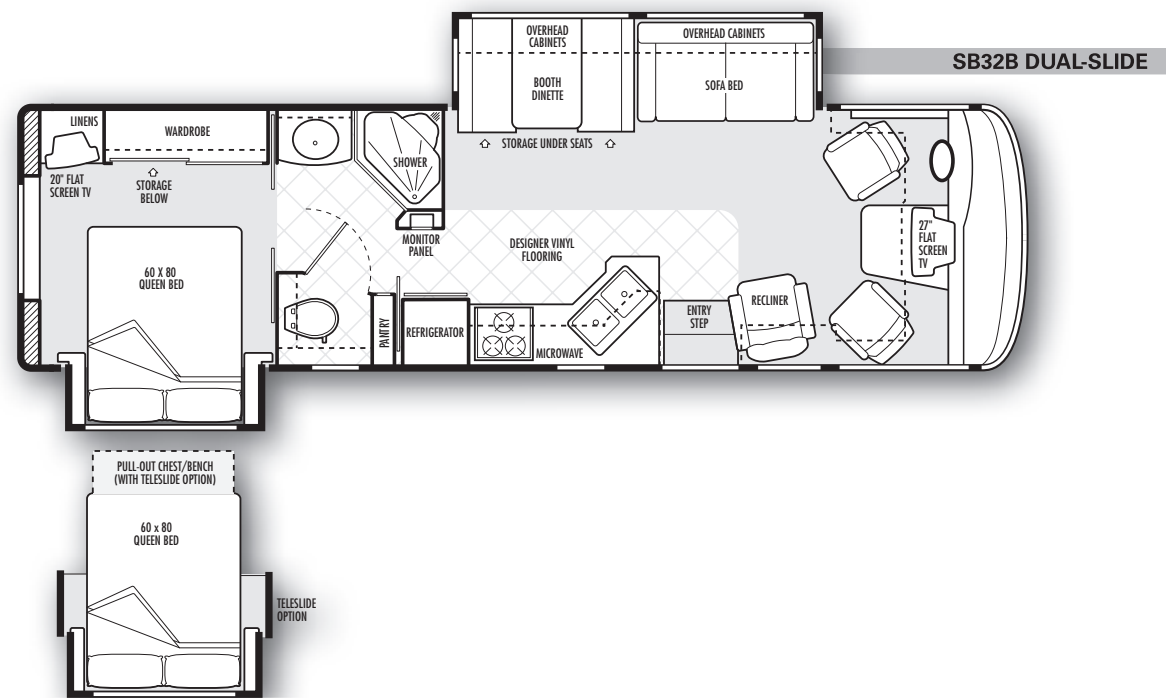
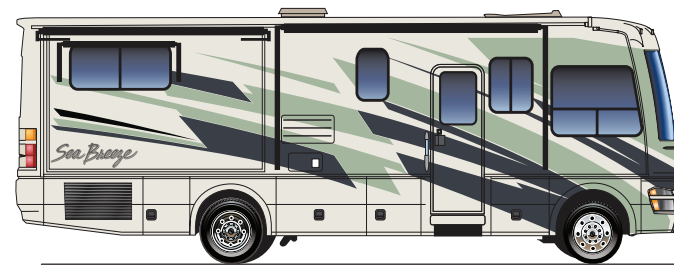


FLOOR PLANS

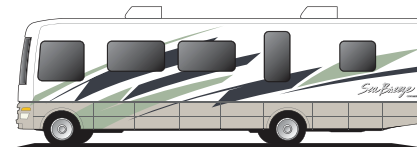


EXTERIORS

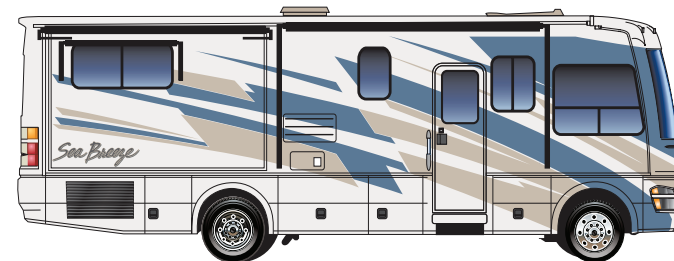
Antilles Retreat



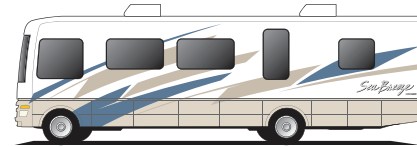
Partial



Bayshore Mist



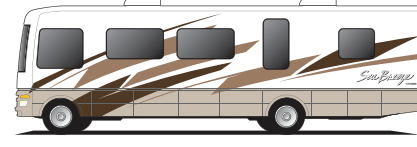
Partial



Kahlua Cream



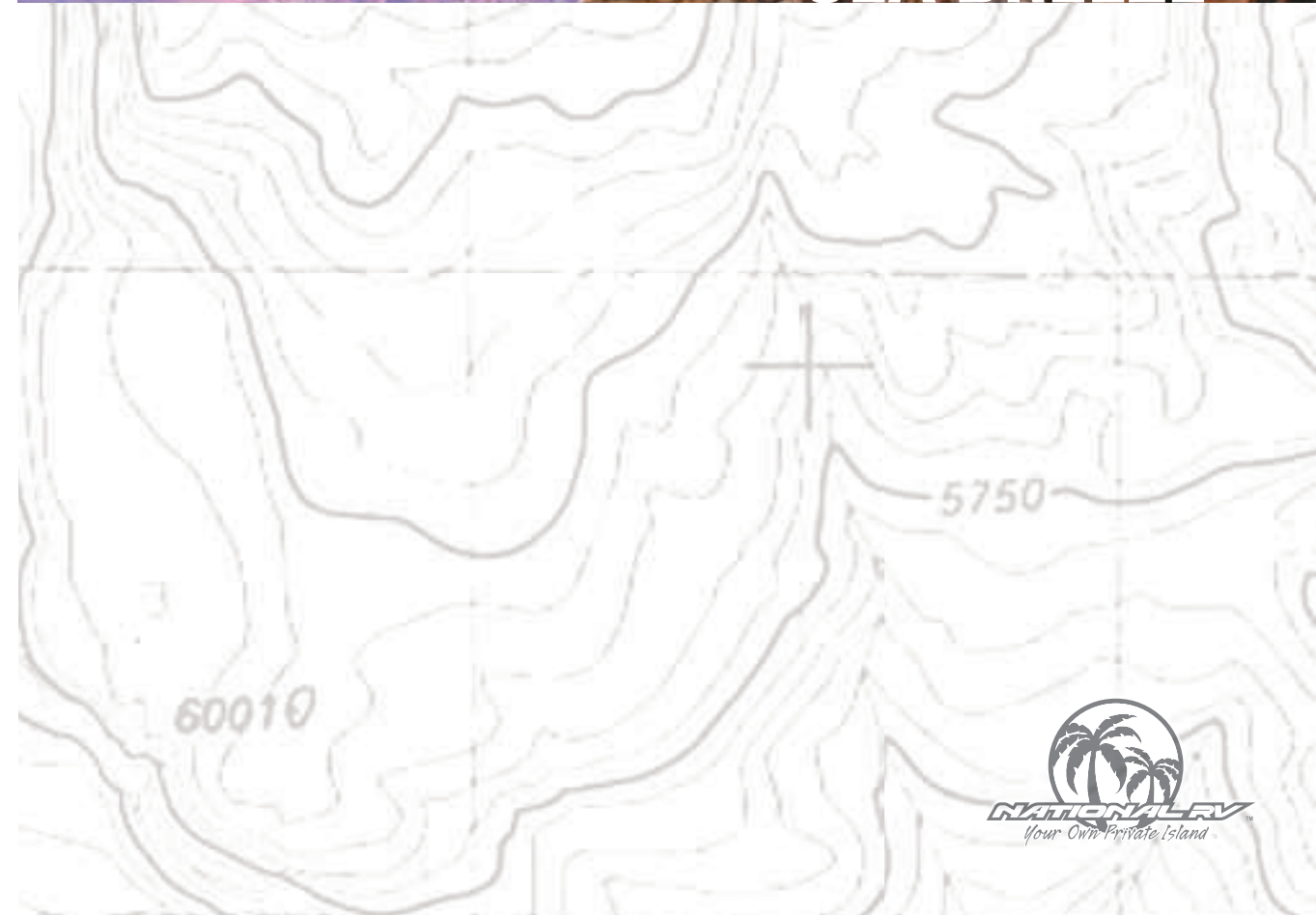
Partial



www.nationalrv.com
3411 N. Perris Blvd
Perris, CA 92571
1.800.322.6007



©2007 by National RV, Inc.
All information, illustrations and specifications in this publication are valid at time of printing. National RV reserves the right to make changes at any time, without notice, to any equipment, specifications, features, options, packages or models depicted in this brochure.
0807SBV1



FORD CHASSIS

MEASUREMENTS	SB32B - F	SB32B - F	SB34C - F	SB34C - F	SB37D - F
Overall length	33'-1"	33'-1"	35'-6"	35'-6"	37'-7"
Overall height ^a	12'-1"	12'-1"	12'-1"	12'-1"	12'-1"
Exterior width	101¼"	101¼"	101¼"	101¼"	101¼"
Interior height	82"	82"	82"	82"	82"
Interior width	97½"	97½"	97½"	97½"	97½"
Fuel Capacities	75 gal.	75 gal.	75 gal.	75 gal.	75 gal.
Water Heater	10 gal.	10 gal.	10 gal.	10 gal.	10 gal.
Gray Tank	41 gal.	41 gal.	50 gal.	50 gal.	50 gal.
Black Tank	50 gal.	50 gal.	50 gal.	50 gal.	47 gal.
Fresh Water Capacity ^b	77 gal.	77 gal.	85 gal.	85 gal.	82 gal.
Propane Gas (volume w.c.)	24 gal.	24 gal.	24 gal.	24 gal.	24 gal.
GVWR	20,500	22,000	20,500	22,000	22,000
GCWR	26,000	26,000	26,000	26,000	26,000
GAWR (front)	7,000	7,500	7,000	7,500	7,500
GAWR (rear)	13,500	14,500	13,500	14,500	14,500
Wheelbase	208"	208"	228"	228"	242"
Tires	245/70R 19.5-F	235/80R 22.5G	245/70R 19.5-F	235/80R 22.5G	235/80R 22.5G
Tow Hitch Capacity	5,000 lbs.	5,000 lbs.	5,000 lbs.	5,000 lbs.	5,000 lbs.
Axle Ratio	5.38:1	5.38:1	5.38:1	5.38:1	5.38:1

WORKHORSE CHASSIS

MEASUREMENTS	SB32B - W22	SB34C - W22	SB37D - W22
Overall length	33'-6"	35'-6"	37'-7"
Overall height ^a	12' -1"	12'-1"	12'-1"
Exterior width	101¼"	101¼"	101¼"
Interior height	82"	82"	82"
Interior width	97½"	97½"	97½"
Fuel Capacities	75 gal.	75 gal.	75 gal
Water Heater	10 gal.	10 gal.	10 gal.
Gray Tank	41 gal.	50 gal.	50 gal.
Black Tank	50 gal.	50 gal.	47 gal.
Fresh Water Capacity ^b	77 gal.	85 gal.	82 gal.
Propane Gas (volume w.c.)	24 gal.	24 gal.	24 gal.
GVWR	22,000	22,000	22,000
GCWR	26,000	26,000	26,000
GAWR (front)	8,000	8,000	8,000
GAWR (rear)	15,000	15,000	15,000
Wheelbase	208"	228"	242"
Tires	235/80R 22.5 G	235/80R 22.5G	235/80R 22.5G
Tow Hitch Capacity	5,000 lbs.	5,000 lbs.	5,000 lbs.
Axle Ratio	5.86:1	5.86:1	5.86:1
Peak HP	340 HP @ 4,200 RPM	340 HP @ 4,200 RPM	340 HP @ 4,200 RPM
Peak Torque	455 lb./ft @ 3,200 RPM	455 lb./ft @ 3,200 RPM	455 lb./ft @ 3,200 RPM

FORD CHASSIS SPECIFICATIONS

Ford® Super Duty F-53 Chassis
Ford® Triton V-10 (6.8L EFI) Engine
- Peak HP (362 HP @ 4,750 RPM)
- Peak Torque (457 lb./ft @ 3,250 RPM)
Ford® Torq-Shift 5-speed Automatic Overdrive Transmission
Power Hydraulic 4-wheel disc ABS with HydroBoost
Tapered leaf spring suspension with gas pressurized premium Bilstein® shock absorbers and front track bar
Column Mounted Shifter
Polished Aluminum, front and rear with steel Inner on rear
5,000 lb. Class III hitch with 7-pin electrical connector^c
Ford® 130 Amp alternator

FORD WARRANTY

Ford® Chassis Warranty 3 years/36,000 mi.

Ford® Torq-Shift Transmission Warranty 3 years/36,000 mi.

Ford® Super Duty Engine Warranty 3 years/36,000 mi.

WORKHORSE CHASSIS SPECIFICATIONS

GM Vortec™ 8100 V-8 (8.1L) Engine
Allison® 1000 Series 6-speed Automatic Overdrive & Electronic Control Transmission
4-wheel disc ABS system with Hydromax power boost
Single stage constant rate parabolic w/aux. Like-Air™ spring, front and rear stabilizer bar and Bilstein® monotube gas-charged shocks
Column shifter
Polished Aluminum, front and rear with steel Inner on rear
5,000 lb. Class III hitch with 7-pin electrical connector^c
Workhorse™ 145 Amp alternator

WORKHORSE WARRANTY

Workhorse™ Chassis Warranty 3 years/36,000 mi.
Workhorse™ Limited Powertrain Warranty 5 years/100,000 mi.
Workhorse™ Transmission Warranty 5 years/200,000 mi.

^a Overall height is based on standard specifications and does not included optional equipment added. Models equipped with Kingdome® satellite add 8" to height.

^b Fresh Water Capacity includes the capacity of the water heater.

^c Actual towing capacity is dependent on load and tow circumstances are based on GVWR, GAWR and GCWR.

^d All LX features available as standalone options

STANDARD FEATURES

COACH BODY CONSTRUCTION

DuraFrame® patented steel sub floor construction
Steel framed laminated floor
Steel framed crowned laminated fiberglass roof
Steel framed laminated fiberglass high gloss sidewalls
Steel cockpit overhead construction
Front and rear molded high gloss fiberglass caps and integrated bumper assembly
One-piece tinted windshield
Electric slide-out rooms (flush floor on lounge slide models only)
Aluminum exterior storage compartment doors with gas struts, side-hinged for easy access on most applications
Steel framed exterior storage compartment with insulated floors
Black aluminum rear ladder
Awning rail/rain gutter with drip spouts
Automotive undercoating
Steel insulated front bulkhead
Custom partial body paint with deluxe vinyl graphics available in choice of three color schemes
Grey "National RV" logo on rear cap
"Big Box" construction with 82" interior height
Fuel fill door in rear bumper

FURNITURE

Kustom-Fit® fabric/vinyl driver recliner seat w/ swivel base
Kustom-Fit® fabric / Vinyl passenger recliner seat w/ swivel base
Kustom-Fit® Wonder-Bed® fabric sleeper sofa w/ slide-in armrests
Kustom-Fit® freestanding vinyl swivel recliner chair w/ footrest (N/A SB31A)

APPLIANCES & ACCESSORIES

10 cu. ft. double door Dometic® Stainless Steel refrigerator with ice maker and pantry (SB32B & SB34C)
12 cu. Ft. 4-door Norcold® Stainless Steel refrigerator w/ Icemaker (SB37D only)
High output three burner cook top with drawers below
Convection microwave oven with built-in light and fan
Cable TV outlets in living room and bedroom areas
Multiple telephone jacks
TV antenna
27" flat screen TV in living area (overhead cockpit)
20" flat screen TV in bedroom with front A/V jacks
Video control box with antenna boost
DVD player with remote control
Pre-wired for satellite dish

COCKPIT FEATURES

Big button AM/FM stereo and CD player with four speakers and input / charger jack for full iPod® connectivity and MP3 support
Rear vision system with cockpit monitor and black and white motorized rear camera with built-in microphone
Driver and passenger reading lights with switches
Custom designed ergonomic dash with full gauge package
Convenience tray
Low mount automotive-style windshield wipers
Power steering
Electronic cruise control
Tilt steering wheel
Oversized steering wheel w/ power steering (Workhorse only)
High mounted, powered, heated, black convex rear view mirrors with turn signals
Passenger workstation w/ 12V and 120V receptacles & phone jack
Padded vinyl sun visors with map pocket
Wrap-around privacy curtain with easy reach wand
Fully Automatic 4-point leveling jacks with dash mounted controls
Generator hour meter and auxiliary start switch on dash
Exterior temperature sensor (Workhorse chassis only)
Illuminated step well
Floor mats

ELECTRICAL SYSTEMS

50 Amp 120V distribution panel
50 Amp shore power cord
12V distribution panel with re-settable push button circuit breakers
5.5kW Onan® Marquis Gold series generator
(2) 6V deep cycle house batteries
1,800W inverter
55 Amp converter/charger
(1) 12V chassis battery
Battery disconnect switch for house batteries
Systems monitor panel
Amber porch light with interior switch
Lighted storage compartments and service area
Patio 120V receptacle and phone jack
Recessed fluorescent and incandescent lights in ceiling
Designer light fixtures in living and bedroom areas
Cosmetic light in bathroom
Three water pump switches (kitchen, bathroom and exterior service compartment)
Battery voltage meter in monitor panel
GFI protected electrical circuit
Courtesy light at entry-door switch panel
7-pin trailer hitch connector

WINDOWS, DOORS & AWNINGS

Dual pane radius tinted safety glass windows
Manual Patio awning with white vinyl cover and hardware (Partial Body Paint)
Bedroom rear picture window (N/A SB37D)
30" wide entrance door with clear glass, shade and screen door
Power entrance step with light and anti-skid surface
Ventilated windows on endwalls of lounge slide-outs
Slide-out topper awnings
Window in toilet room (SB32B only)
Tinted skylight in bathroom

INTERIOR

Natural Maple finish paneling and doors
Padded Vinyl ceiling
Telestrut hardware on overhead doors and positive catches
Full extension drawers with ball bearing roller guide
Decorative key hooks
Day/night shades with designer valances w/ easy-grip rails

LIVING AREA

Booth dinette with under-seat storage cabinets and wire baskets
Saloon Table (SB34C only)
Plush carpet with deluxe pad
Hutch and overhead with beveled mirror (SB37D only)

KITCHEN AREA

Pantry w/ wire basket storage (SB32B, SB34C)
Premium solid surface kitchen countertop extension, accented backsplash and flush mount stove cover
Storage for stove top covers under sink
Beveled mirror above galley backsplash
Large stainless steel under mount dual sink
Premium Solid Surface sink covers
Wastebasket
Designer vinyl tile flooring
Mini-blind with valance
Silverware organizer tray

BATH AREA

Designer vinyl tile flooring
Decorative glass shower door
Laminate bathroom countertop with decorative edge
Medicine cabinet

BEDROOM AREA

Plush carpet with deluxe pad
Day/night shades with designer valances
Cedar lining in wardrobe

Automatic lighted wardrobe with mirrored doors and hamper below
Bedspread, pillows and shams
Slide-out queen bed with under bed storage compartment (Select models only)
Sandpiper Deluxe™ residential-style queen size pillow top mattress

PLUMBING SYSTEMS

Heated systems compartment with easy access to hook-ups
On demand water system w/ water filter and water pump
Holding tank rinse system (black tank only)
Winterization antifreeze inlet to pump
Outside shower located in service compartment
Water heater bypass valve
Pressurized water fill with integrated regulator
10 gallon, quick-recovery water heater with direct spark ignition (gas/electric)
Single lever faucet with side sprayer
One-piece fiberglass shower
Handheld shower head with flexible hose
Low profile Toilet (SB32B)
High Profile Toilet (SB34C / SB37D)
Single lever bathroom faucet

SAFETY/SECURITY

Fog lights
Driver and passenger three point seat belts
Deadbolt lock on entrance door
Interior & Exterior entry assist handle
Fire extinguisher
Smoke, carbon monoxide (CO) and propane leak detectors
Emergency exit window
Daytime running lights (CSA units only)
Rear third brake light

CLIMATE CONTROL

Two Thermostatically controlled 13,500 BTU ducted white roof air conditioner (white)
35,000 BTU electronic ignition furnace
Ducted heating system
Pre-wire for 12V Fan-Tastic® Vent with wall thermostat & rain sensor in bedroom
12V roof exhaust fan in bathroom and galley
Non-powered roof vent in bedroom
Dash automotive heating and air conditioner system with defroster

OPTIONAL FEATURES

COACH BODY CONSTRUCTION

Protective film front mask
Teleslide Option
APPLIANCES & ACCESSORIES
High output three burner cook top with range/oven
Home theater entertainment package (includes DVD digital receiver and subwoofer/speaker system)
Kingdome® automatic stationary satellite dish

COCKPIT FEATURES

Sirius® satellite radio module with 6 month subscription
Dual 2-speed overhead dash fans
Manual driver/passenger side window sun shade
5.5kW Onan® Marquis Gold series generator

WINDOWS, DOORS & AWNINGS

Manual patio awning with black metal cover and hardware (Full Body Paint req'd)
Exterior windshield sun screens

INTERIORS

Natural Cherry finish paneling and doors

CLIMATE CONTROL

Two 13,500 BTU black roof A/C (Full Body Paint req'd)
12V Fan-Tastic® Vent with 3 speed exhaust fan in galley
12V Fan-Tastic® Vent with wall thermostat & rain sensor in bedroom

LX PACKAGE

All LX features available as stand alone options
Custom full body paint available in choice of three color schemes
22,000lb Ford Chassis
22,000lb Workhorse Chassis
Kustom-Fit® soft touch OptimaLeather® cockpit seating package:
Includes a soft touch OptimaLeather® 6-way power driver seat with swivel base and a soft touch OptimaLeather® manual passenger seat with swivel base
Color rear vision system with side view cameras (3 camera system)