

Reconnect with your
INNER CHILD.



American
TRADITION
2011



How sweet it is.

Experience a place where every food is comfort food, where handcrafted hardwood cabinets mingle with name brand appliances, and where beautiful décor accents perfectly complement contemporary tile floors. Tradition's well-appointed galley is the perfect place to create an intimate dinner for two or to entertain new friends.



The perfect getaway.

Pamper yourself in Tradition's lavish master suite. Curl up on the plush mattress and whisk away the summer heat beneath the soothing ceiling fan. Freshen up after a long day in the spacious bathroom, and stow away your journey's trinkets and treasures in the full-size wardrobe.



| 2011 AMERICAN TRADITION

Master Suite shown in Almond Crème interior décor with Regency Cherry with Ebony Glaze wood cabinetry.



Let yourself go.

Tradition features a sleek, state-of-the-art cockpit with dual dash monitor design. Its six-way adjustable captain's seats offer comfort and maximum lumbar support, while the low-profile dash expands your view so you can enjoy every inch of the beautiful countryside.

When you drive Tradition, you'll want to take the long way to your next destination.



Exterior Graphics



Black Gold in Latitude Graphics



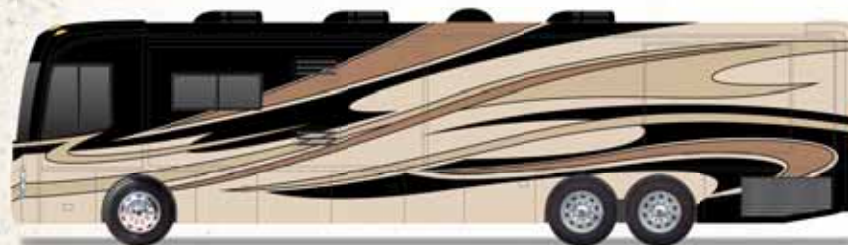
Claret Pearl in Legion Graphics



Cabernet Gold in Latitude Graphics



Mocha Frost in Legion Graphics



Cafe Blanc in Latitude Graphics



Vienna Night in Legion Graphics



| 2011 AMERICAN TRADITION

Not all exterior colors or graphics are shown. All colors are available in Latitude and Legion graphics schemes. See your American Coach dealer or visit our website at www.AmericanCoach.com to view all graphic and color choices.

Interior Décor



Almond Crème



Cognac Kisses



Mocha Midnight



Silver Charcoal

Solid Wood Cabinetry Choices

Hardware



Almond Mocha
Glaze



Regency Cherry
w/ Ebony Glaze



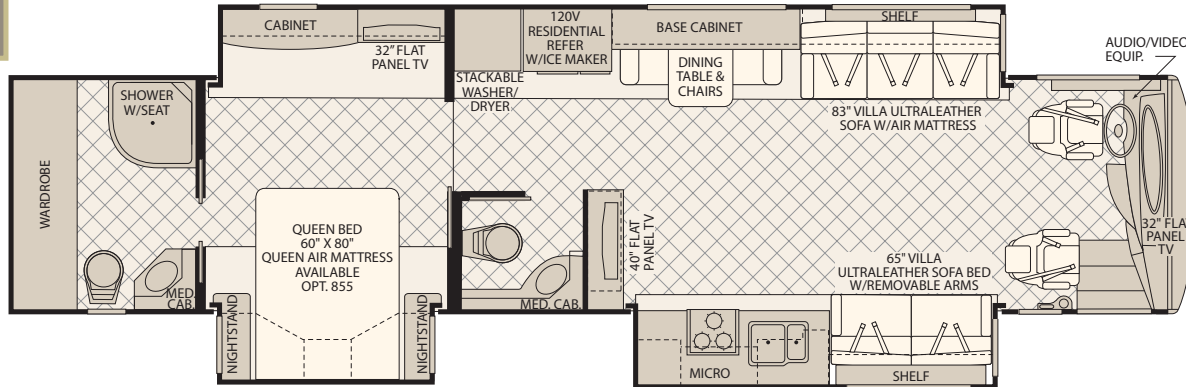
Mahogany

†Interior décors and/or woods may be subject to change. Printed fabric samples above are representations of actual fabrics and may be limited due to standard printing technology. Please check with your American Coach Dealer for specifics.

Floor Plans

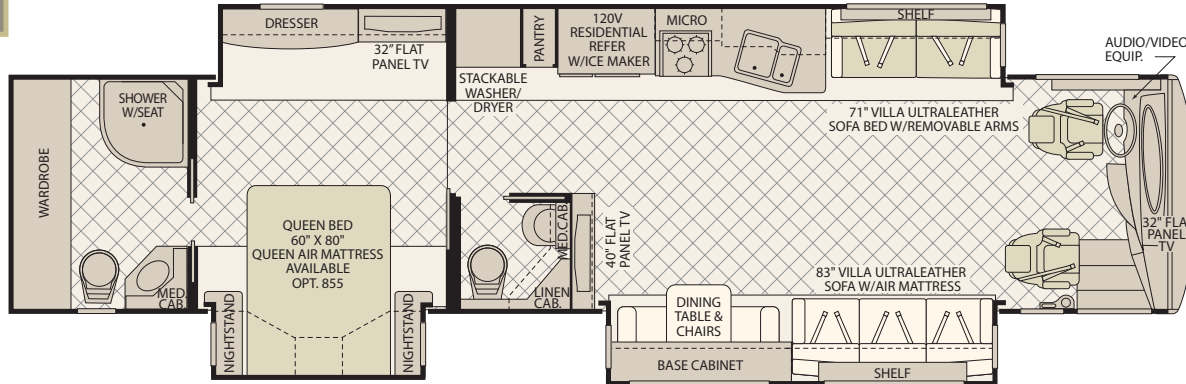
42P

Available options:
107, 113, 124,
125, 126, 127,
129, 205, 828,
852, 855,
856, 881



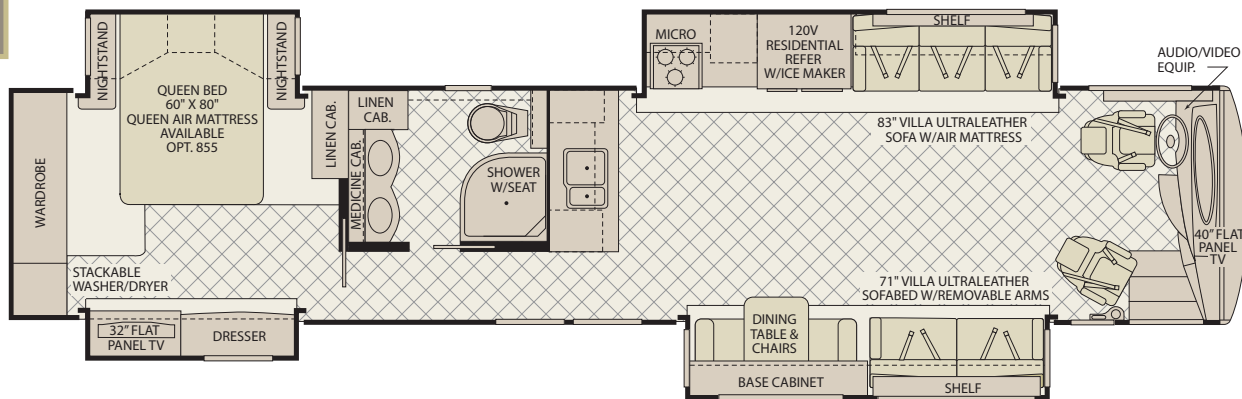
42M

Available options:
107, 113, 124,
125, 126, 127,
129, 205, 828,
852, 855, 856,
881



45Y

Available options:
107, 113, 124,
126, 127, 129,
828, 852, 855,
856, 881



OPTIONS



DISHWASHER
OPT. 107



3-BURNER
RANGE
W/OVEN
OPT. 113



ELECTRIC
COOKTOP
OPT. 124



ELECTRIC COOKTOP/
DISHWASHER
OPT. 125



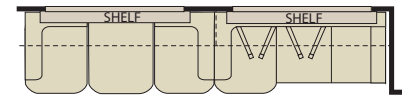
DOMETIC
SIDE-BY-SIDE
14 CU. FT.
W/ICE MAKER
OPT. 127



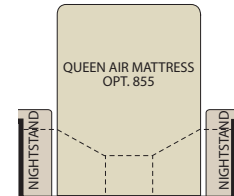
WASHER/DRYER
COMBO OPT. 126
OR
WASHER/DRYER
READY
OPT. 129



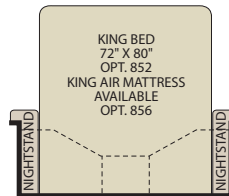
65" VILLA ULTRALEATHER SOFA SLEEPER
W/AIR MATTRESS (71" on 42M) OPT. 205



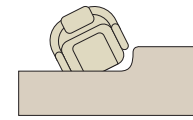
FACE-TO-FACE ULTRALEATHER DINETTE ENSEMBLE VILLA PACKAGE
OPT. 828



QUEEN AIR MATTRESS
OPT. 855



KING BED
72" X 80"
OPT. 852
KING AIR MATTRESS
AVAILABLE
OPT. 856



DESK W/RECLINER OPT. 881

Weights and Measurements

WEIGHTS	42M	42P	45Y
GVWR (lbs) ¹	46,600	46,600	46,600
Front GAWR (lbs) ²	16,600	16,600	16,600
Rear GAWR (lbs) ²	20,000	20,000	20,000
Tag Axle GAWR (lbs) ²	10,000	10,000	10,000
GCWR (lbs) ³	61,600	61,600	61,600
Hitch Rating Weight (lbs) [†]	15,000	15,000	15,000
Tongue Weight (lbs) [†]	1,500	1,500	1,500

DIMENSIONS & CAPACITIES	42M	42P	45Y
Wheelbase (inches)	302"	302"	302"
Overall Length ⁴	42' 11.5"	42' 11.5"	44' 11.5"
Overall Height (with A/C)	13' 2.25"	13' 2.25"	13' 2.25"
Overall Width (maximum) ^{5, 6}	102"	102"	102"
Interior Height (maximum)	84"	84"	84"
Interior Width (maximum)	96"	96"	96"
Fresh Water Holding Tank (gal)	100	100	100
Grey Water Holding Tank (gal)	60	60	60
Black Water Holding Tank (gal)	40	40	40
Appliance Propane Tank (gal) (WC) ⁷	28.2	28.2	28.2
Fuel Capacity (gal)	150	150	150
Std. Carefree Patio Awnings	19' 6"	17' 6"	19' 6"
Opt. Girard Driver Side Awnings	13' 4"	12' 5"	12' 5"

Liquid Weight Reference: Water (gal) = (8.3 lbs/3.8 kgs) Fuel (gal) = (6.1 lbs/2.8 kgs) Propane (gal) = (4.2 lbs/1.9 kgs)
 Metric Conversion: Multiply pounds x 0.453 to obtain kilograms. Multiply gallons x 3.785 to obtain liters.
 Multiply liters x 61 to obtain cubic inches.

CHASSIS - CUMMINS® 42S	CHASSIS - CUMMINS® 450 (New Emission)
Frame: Liberty Chassis	Frame: Liberty Chassis
Engine: ISL 425 HP, 8.9L w/2 Stage Engine Brake	Engine: ISL 450 HP, 8.9L w/2 Stage Engine Brake
Torque: 1200 lb-ft @ 1300 RPM	Torque: 1250 lb-ft @ 1300 RPM
Transmission: Allison® 3000 MH, 6 Speed w/Electronic Shifter	Transmission: Allison® 3000 MH, 6 Speed w/Electronic Shifter
Alternator Amps: 200 Amp, Leece Neville	Alternator Amps: 200 Amp, Leece Neville
Tires: 315/80R 22.5 Michelin® Radial (2)	Tires: 315/80R 22.5 Michelin® Radial (2)
Tires: 295/80R 22.5 Michelin® Radial (6)	Tires: 295/80R 22.5 Michelin® Radial (6)

1. GVWR (Gross Vehicle Weight Rating) is the maximum permissible weight of this fully loaded motor home. The GVWR is equal to or greater than the sum of the (UVW) unloaded vehicle weight plus the (OCCC) occupant cargo carrying capacity*.
2. GAWR (Gross Axle Weight Rating) is the maximum permissible loaded weight a specific axle is designed to carry.
3. GCWR (Gross Combined Weight Rating) is the value specified by the motor home manufacturer as the maximum allowable loaded weight of this motor home with its towed vehicle. Towing and braking capacities may be different. Refer to American Coach and chassis manufacturer's manuals for complete information.
4. Length measured from front bumper to rear bumper (excludes accessories).
5. Excludes safety equipment and awnings.
6. Motor homes feature a body-width over 96" which will restrict your access to certain roads. Before purchasing, you should research any state and/or province road laws which may affect your usage.

N/A = Not Applicable

* UVW and OCCC are found on the label containing the federal certification tag in each RV.

† The chassis manufacturer recommends the installation of a supplemental brake control system to activate the brakes on the vehicle or trailer you are towing. Hitch receiver ratings expressed are maximum for the hitch receiver installed and may require the purchase of additional equipment that is dependant on the weight of the towed load. Consult with hitch receiver manufacturer for further information.

IMPORTANT — PLEASE READ: Product information, photography and illustrations included in this publication were as accurate as possible at the time of printing. For further product information and changes, please visit our website at www.AmericanCoach.com or contact your local American Coach dealer. Prices, materials, design and specifications are subject to change without notice. All weights, fuel, liquid capacities and dimensions are approximate. American Coach has designed its recreational vehicles to provide a variety of uses for its customers. Each vehicle features optimal seating, sleeping, storage and fluid capacities. The user is responsible for selecting the proper combination of loads (i.e. occupants, equipment, fluids, cargo, etc.) to ensure that the vehicle's capacities are not exceeded.

GENERAL AMENITIES

<ul style="list-style-type: none"> • Outlet (Multiple Locations) • Decorative Throw Pillows • Masland® Carpeting • Decorative Wood & Fabric Window Treatments • Accent Rope Lighting • Fan-Tastic® Rain Sensor Power Roof Vents w/3-Speed Fan (3) • Interior MultiPlex "Power Management Plus System" 	<ul style="list-style-type: none"> • TV Cable Ready • Premium Hardwood Face Framed Cabinetry and Moldings • Premium Hardwood Cabinet Doors • Lined Cabinet Interior Bottoms and Shelves • Decorative Ceiling Trim • Flush Bolt Latch Decorative Hardware on Pocket Doors 	<ul style="list-style-type: none"> • Matte Finish Porcelain Tile Floor at Entry, Galley, Bedroom, & Bathroom • Tile Backsplash w/Accent Inserts <p>OPTIONAL</p> <ul style="list-style-type: none"> • Custom Interior Request • Factory V.I.P. Delivery • Canadian Standards Build
--	--	--

DRIVER CONVENIENCE

<ul style="list-style-type: none"> • Visteon Dash AM/FM Stereo; Single CD, MP3, Bluetooth, DVD, iPod Compatible • Dual Dash Monitors Design • Touch Screen GPS Navigation • Sony® Color Camera Monitor w/ One Way Audio • Tire Pressure & Silverleaf Chassis Monitoring • Premium Hardwood Dash Cabinetry w/Corian® Top & Storage Drawers • Villa® 6-Way Power Driver Seat w/Heat, Power Lumbar & Adjustable Arms (Ultraleather) • Villa® 6-Way Power Passenger Seat with Heat, Power Lumbar, Adjustable Arms and Electric Footrest (Ultraleather) • Sirius Satellite Radio® (Subscription Required) 	<ul style="list-style-type: none"> • Cruise Control • I.C.C. Light Switch • Smart Wheel w/Leather & Burl Wood Trim w/Manual Tilt, Tip, Telescope • Top Mounted Intermittent Windshield Wiper System w/Wet Arm • Power Sun Shades and Blinds • Power Driver Window • One Piece Windshield Bonded to Steel • Windshield Washer Bottle, 1.5 Gallon Reservoir • Driver and Passenger Drink Holder • Driver and Passenger Map Reading Lights • Halogen Head Lamps • SGM Dash Climate Control 	<ul style="list-style-type: none"> • Adjustable Brake and Throttle Pedals • Compass and Exterior Temperature Gauge • Low Profile Automotive Style Dash Instrumentation, Back Lit Gages and Switches • Hadley® Air Horns • Tag Axle Dump Switch • Keyless Entry Door Access w/Key Fob • Auxiliary Fog Lamps • Auxiliary Start Switch • CB Radio Ready (Power and Antenna) • Low Level Washer Fluid Indicator • Multiple Auxiliary 12-Volt Dash Receptacles
---	---	--

LIVING ROOM

<ul style="list-style-type: none"> • Power Step Well Cover • Entry Step Switch at Entry Wall • Lighted Step Well Area • Large Passenger Window • 12V Halogen Ceiling Lighting and Reading Lights 	<ul style="list-style-type: none"> • Centralized Audio-Electronics • Day/Night Pleated Shades • Premium Hardwood Front TV Overhead Cabinetry • Raised Panel Cabinet Doors • Centralized Command Center 	<ul style="list-style-type: none"> • Automatic Generator Start System • Inverter and Battery Monitor • Porcelain Tile Floor • Central Vacuum System <p>OPTIONAL</p> <ul style="list-style-type: none"> • Power Shades/Blinds Package
---	---	---

GALLEY

<ul style="list-style-type: none"> • Polished Mystera® Solid Surface Galley Top, Range and Sink Covers • Countertop Decorative Edge Treatment • Solid Surface Double Bowl Galley Sink • Tile and Accent Glass Tile Backsplash w/Decorative Inserts 	<ul style="list-style-type: none"> • Recessed 3 Burner Cook Top • Solid Hardwood Drawer Fronts • Roller Bearing Drawer Guides, Full Extension • 12V Fluorescent Lighting • Adjustable Shelves • Cabinet Storage for Sink and 	<ul style="list-style-type: none"> • Range Covers • Task Halogen Lighting • Kohler® High Rise Galley Faucet w/Pullout Sprayer • Silverware Tray • Porcelain Tile Floor
--	--	---

BEDROOM

<ul style="list-style-type: none"> • Premium Hardwood 6 Panel Bath and Bedroom Doors • Premium Hardwood Framed Headboard w/Padded Fabric Accent • Quilted Bedspread • Queen Innerspring Pillow Top Mattress (60" x 80") • Lift Up Bed w/Under Bed Storage • Polished Mystera® Solid Surface Counter & Nightstand Tops 	<ul style="list-style-type: none"> • Overhead Cabinet Above the Bed • Wall Sconce Light Fixtures • 30" Deep Bedroom Slides • Power Privacy View Style Shades • Day/Night Pleated Shades • Remote Generator Start Switch • Cedar Lined Wardrobe • Wardrobe Lighting • Full Length Rear Wardrobe 	<ul style="list-style-type: none"> • Recessed Bedroom Ceiling Fan • Porcelain Tile Floor <p>OPTIONAL</p> <ul style="list-style-type: none"> • King Bed w/Pillow Top (72" x 80") • Select Comfort Queen Air Mattress w/2 Remotes • Select Comfort King Air Mattress w/2 Remotes
---	---	---

BATHROOM

<ul style="list-style-type: none"> • Polished Mystera® Solid Surface Lavy Countertop w/Porcelain Bowl & Residential Faucet • Medicine Cabinet • Color Coordinated Fiberglass Shower w/Molded Seat-Shelf 	<ul style="list-style-type: none"> • Skylight in Shower • Shower Caddy Molded into Shower Surround • Residential Hand Held Shower Head • Obscure Style Decorative Shower 	<ul style="list-style-type: none"> • Glass Enclosure • Power Flush China Toilet (Select Models / Locations) • Residential China Bowl Flush Toilet w/Hand Sprayer • Mini Blind (Bathroom Window)
--	--	---

FURNITURE

<ul style="list-style-type: none"> • Villa Ultraleather Sofa Bed w/ Removeable Arms • Villa Ultraleather Sofa Bed w/Air Mattress • Solid Surface Dinette Table, Slide Out Extension, 2 Decorative Chairs, 2 Folding Chairs • Dinette w/Deep Base Cabinet Storage, File Storage & Keyboard 	<ul style="list-style-type: none"> • Tray • Decorative Dinette & Folding Guest Chairs Not Available w/ Face to Face Dinette Options <p>OPTIONAL</p> <ul style="list-style-type: none"> • Villa® Ultraleather Dinette Face-to-Face Wrap Around Ensemble • Villa® Ultraleather Sofa Bed w/ Air Mattress (w/Wrap Around 	<ul style="list-style-type: none"> • Ensemble) • Villa® Ultraleather Dual Recliners (Select Models) • Villa® Ultraleather Recliner & Ottoman with Desk (Select Models) • Villa® Ultraleather Expanding L-Sofa (Select Models)
---	--	---

APPLIANCES

<h3>LIVING ROOM</h3> <ul style="list-style-type: none"> • Sony® 32" LCD HDTV Front • Sony® 40" LED HDTV Front TV (45Y) • Sony® 40" LED HDTV Mid Ship 	<p>(Select Models)</p> <ul style="list-style-type: none"> • Sony® Blu Ray Home Entertainment System w/WIFI • TracVision® R5 Series "In Motion" HDTV Compatible, Domed Digital 	<ul style="list-style-type: none"> • Satellite System <p>OPTIONAL</p> <ul style="list-style-type: none"> • TracVision® R6 Series
---	---	--

GALLEY

<ul style="list-style-type: none"> • Residential Refrigerator w/ Icemaker • GE® Over the Range Convection Microwave Oven 	<p>OPTIONAL</p> <ul style="list-style-type: none"> • Recessed 3 Burner Range & Oven • Dishwasher w/Cabinet Wood Front • Dometic® 14 cu. ft., Sidewise 	<ul style="list-style-type: none"> • Refrigerator, 120V/Propane, Icemaker • Electric Cook top w/Dishwasher (all electric option) • Electric Cook top (all electric option)
--	--	---

BEDROOM

<ul style="list-style-type: none"> • Sony® 32" LCD HDTV 	<ul style="list-style-type: none"> • Sony Upscaling DVD Player 	
--	---	--

GENERAL

<ul style="list-style-type: none"> • Stacked Washer/Dryer 	<p>OPTIONAL</p> <ul style="list-style-type: none"> • Combination Washer/Dryer (Vented) 	<ul style="list-style-type: none"> • Washer/Dryer Ready w/Shelves
--	---	--



OPTIONAL FEATURES | INTERIOR AMENITIES

HEATING / PLUMBING

- AquaHot Heating System, 50,000 Btu(House, Water& Engine Pre-Heat)
- Heated Basement
- (3) 15.0M Low Profile Roof Airst
- Heat Pump on Rear AC Unit
- Hinged Plumbing & Access Panels (Galley & Bath Areas)
- Propane (LPG) Tank
- Fresh Water Gravity Fill
- Holding Tanks w/Low Point Drain Valves
- Multi-Point Water Pump Switching
- Variable Speed Water Pump
- Whole Coach Water Filtration System
- Dual Holding Tank San-T-Flush™ System
- Waste Away Sewer Hose Manager
- OPTIONAL
- Heated Full Tile Floor
- Waste Management System (Macerator) *Deletes Sewer Hose Manager*

SAFETY

- Smoke Detector/Alarm
- Carbon (CO) Monoxide Detector
- Fire Extinguisher
- Propane (LP) Leak Detector
- 3 Point Integrated Seat Belts at
- Driver & Passenger Seats
- Side Docking Lamps (4)
- Momentary Courtesy Lighting at Entry and Passenger Area
- Lighted Exterior Grab Handle w/
- Logo
- Emergency Egress Window
- Turn Signal Indicators

AMERICAN TRADITION STANDARD and OPTIONAL FEATURES | EXTERIOR AMENITIES

GENERAL AMENITIES

- Diamond Shield Protective Front Mask
- Dual Pure Sine Wave Inverter / Chargers (2800 / 2000 Watt)
- Maintenance Free (8) Absorbed Glass Mat 6-Volt Batteries (Group GC2)
- Inverter and Battery Monitor
- Surge Guard™ Electrical System Protection
- Energy Management System (50 Amp)
- Battery Disconnect Switches for House and Chassis
- Hella Docking Lamps (4)
- Sliding Lower Front Cap
- Power Generator Slide
- Utility Light-Front & Rear
- Dual Fuel Fill Doors -Locking
- Fresh Water Hose (25')
- Sensa Tank Level Monitoring System (Interior & Exterior Monitor)
- Chrome Headlight Bezels
- Spray Wand w/Soap Dispenser & Paper Towel Holder
- Mud Flaps, Front & Rear
- Chrome Hitch Cover, Pin & Clip
- Full Width Rear Rock Guard with Stainless Logo Panel
- Roof Mounted Engine Air Intake
- Two Piece Aluminum Rear Ladder
- Large Rear Engine Access Door w/ Power Assist Struts
- Brushed Chrome Rear Access Grill
- Side Hinged Luggage Doors Manual Locks (Select Doors)
- Strut Assisted Luggage Doors (Select Doors)
- Porch Light
- "One Key" System (Luggage & Entry Doors)
- Power Double Entry Step
- Brushed Stainless Kick Plate Under Entry Door
- Electrical Outlets in Luggage Compartments
- Air Inflation Hose w/Fittings
- Chrome, Heated Side View Mirrors w/Remote Adjustment & Turn Signal Indicators, Side Vision Cameras, Integrated into Mirrors
- Convenience Light in Utility Compartment
- Power Luggage Door locks (Select Doors) w/Remote Key Fob
- Power Cord Reel, 50 AMP
- OPTIONAL
- 2 Exterior Graphic Design Choices - Legion or Latitude Graphic Schemes
- Power Water Hose Reel
- Solar Charging Panel (65w)
- Custom Exterior Paint Color Request
- 1st Full Bay 90" Slide Tray
- 1st Full Bay 36" & 54" Slide Tray
- 2nd Full Bay 90" Slide Tray
- 2nd Full Bay 36" & 54" Slide

CONSTRUCTION

- Powder Coated Heavy Duty Steel Framing (Liberty Chassis)
- Aluminum Framed Wall Construction
- Interlocking Aluminum Framing Connections: Roof, Sidewall, Floor
- Steel Front Bulkhead
- Vacu-bond® Sidewall, Roof, Floor and Rear Wall
- Dense Bead Foam Insulation Throughout
- 5 Layer Flooring with 3" Bead Foam Insulation
- 6 Layer Roof Bead Foam Insulation
- DuPont® Exterior Automotive Full Body Paint w/Sand & Buff Finish
- Gel Coat Fiberglass Exterior Sidewalls w/No Wood Substrate
- Full Fiberglass Front & Rear Caps
- Fiberglass Front & Rear Quarter Panels
- Fiberglass Molded Front Bumper
- One-Piece Fiberglass Roof w/ Radius Corners & Seamless Transition to Caps
- Insulated Aluminum Framed & Paneled Luggage Compartment Doors
- Sound Absorption Material Front, Rear & Engine
- Pebble Finished Fiberglass Basement Lining
- Heated Water & Holding Tank Compartments
- Central Electrical Panel for 120V/12V AC/DC
- TuffPEX® Plumbing System

CHASSIS / ENGINE

- Liberty Chassis
- Independent Front Suspension with 55 Degree Steering Angle
- Group 31 Chassis Batteries (2)
- Air Ride Suspension w/Bilstein® Shocks
- Aluminum Wheels
- Anti-Lock Brake System (ABS)
- Automatic 4-Point Dual Leveling, Air & Hydraulic
- Automatic Traction Control
- Chassis Filter Service Center
- Daytime Running Lights
- Engine Block Heater
- Full Air Brakes w/Automatic Slack Adjusters
- Tire Pressure Check Gauge (Manual)

APPLIANCES

- Onan® 10.0kW Quiet Diesel Generator, Power Slide-Out
- Power TV Antenna with Audible "Antennae Up" Warning
- OPTIONAL
- Exterior TV – Sidewall Mounted (Includes Sony® 32" LCD HDTV, Sony Radio AM/FM/CD/DVD)

AWNING / WINDOWS/ DOORS

- 30" Avionics Entry Door with Dead Bolt & Pneumatic Air Latches
- Entry Screen Door w/Logo Kick Plate
- Powered Entry Door Awning
- Color Coordinated Awnings &
- Awning Arms
- Carefree Powered Patio Awning w/Wind Sensor
- Slide-Out Topper Awnings
- Tinted Dual Pane Windows w/ Screens
- OPTIONAL
- Girard Electric Awning (Includes: Patio, Sofa-Dinette Window, Bedroom Window)



† The chassis manufacturer recommends the installation of a supplemental brake control system to activate the brakes on the vehicle or trailer you are towing. Hitch receiver ratings expressed are maximum for the hitch receiver installed and may require the purchase of additional equipment that is dependant on the weight of the towed load. Consult with hitch receiver manufacturer for further information.



For more information, visit us at www.americancoach.com or call us at 800.854.1344

©2010. Fleetwood RV, Inc. Printed in the USA. Inventory Control Number AT11B1, 9/10. Model Year 2011, First Edition.