

NEW for 2009

BIGFOOTRV.COM



25B17.5FB



Standard Features

Exterior:

- ❖ Lightweight Two Piece Fiberglass Exterior Shell
- ❖ 1 1/2" High Density EPS Insulation (R8)
- ❖ Radius Corner Safety Glass Windows (c/w Screens)
- ❖ Folding Assist Handle
- ❖ Aluminum Covered Rear Bumper (c/w Sewer Hose Storage)
- ❖ Wide Track Single Axle
- ❖ 4400 lbs. Axle Rating
- ❖ 15" Radial Tires with White Spoke Wheels
- ❖ Electric Brakes
- ❖ Break Away Switch
- ❖ LED Exterior Clearance & Directional Lighting
- ❖ Molded Fiberglass Rockguard (c/w Gas Struts)
- ❖ Radius Corner Compartment Doors
- ❖ Radius Corner Entry Door (c/w Deadbolt Lock and Gas Strut)
- ❖ Blocking for Roof Rack & Ladder
- ❖ Awning Rail
- ❖ Folding Entry Step (2 Step)

Interior:

- ❖ Washable Vinyl Wall Paneling
- ❖ Marine Quality Fabric Headliner
- ❖ Face Framed Double Screwed Oak Styled Cabinets
- ❖ Spring Filled Foam Mattress (48" x 74")
- ❖ Day/Night Shades (In Bedroom)
- ❖ Venetian Blinds (In Galley)
- ❖ TV Hook-up

Kitchen and Appliances:

- ❖ 2 Burner Recessed Cooktop
- ❖ 16,000 BTU Electronic Ignition Ducted Forced Air Furnace
- ❖ Fluorescent Light in Galley
- ❖ 12-Volt Rangehood
- ❖ Monitor Panel
- ❖ Stainless Steel Sink
- ❖ Cutting Board
- ❖ Dual 20 lb. Propane Tanks (c/w OPD Valve)
- ❖ 2-Way 7 cu. ft. Refrigerator

Electrical:

- ❖ Electrical 120-VAC/30-Amp Service
- ❖ 45 Amp. DC Power Converter (c/w Battery Charger)

- ❖ Pre-Wire for Roof AC and Microwave
- ❖ Power Fan in Bathroom
- ❖ Stereo Pre-Wire (c/w 2 Speakers & Antenna)
- ❖ Battery Ready
- ❖ Porch, Hitch and Roadside Lights

Plumbing:

- ❖ City Water Hookup
- ❖ 12-Volt Demand Water Pump System
- ❖ Molded Fiberglass Bathroom Enclosure
- ❖ Water Heater By-Pass System
- ❖ RV Anti-Freeze Pickup System
- ❖ Footflush RV Toilet
- ❖ Electronic Ignition Hot Water Heater (6 Gallon)

Safety:

- ❖ MVSS 302 Fire Rated Automotive Fabric
- ❖ Smoke & Carbon Monoxide Detector
- ❖ Propane Detector
- ❖ Fire Extinguisher
- ❖ Egress Window

Optional Features

- ❖ AC Roof - 11,000 BTU
- ❖ Aluminum Wheels
- ❖ Battery Disconnect (Electronic)
- ❖ Black Tank Rinse System
- ❖ Continental Tire Kit
- ❖ Dual 30 lb. Propane Tanks Upgrade
- ❖ Exterior Shower (c/w Winterizing Valves)
- ❖ Fantastic Fan, Bathroom (Exhaust)
- ❖ Fantastic Fan, Galley (Exhaust)
- ❖ Fiberglass Front Cargo Box (Adds 2' to length of Trailer)
- ❖ Generator, Onan (2.5kw Propane - Requires Gen. Ready Pkg.)
- ❖ Generator Ready Package
- ❖ Heated & Enclosed Holding Tanks
- ❖ LCD TV Prep. Package (c/w Swing Arm)
- ❖ LCD TV (12 Volt - c/w LCD TV Prep. Package)
- ❖ Microwave Oven (.7 cu. ft.)
- ❖ Painted Skirts
- ❖ Porcelain Toilet Upgrade
- ❖ Power Tongue Jack
- ❖ Rack and Ladder

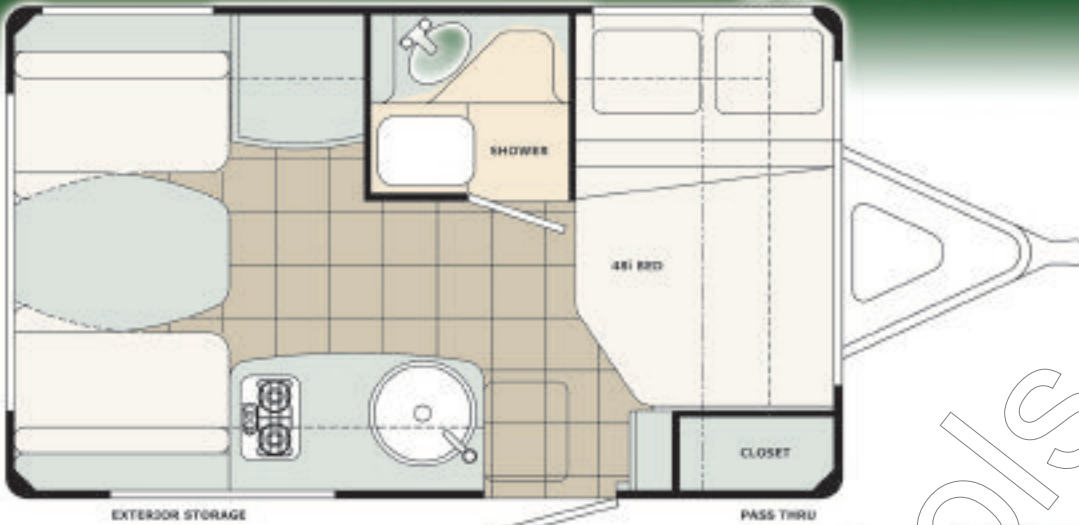
- ❖ RV BBQ Hook Up
- ❖ Self Storing Awning (10')
- ❖ Skylight (Opening - c/w Shade)
- ❖ Solar Energy System (RV80 - c/w Solar Panel Pre-Wire)
- ❖ Solar Panel Pre-Wire
- ❖ Stabilizer Jacks (Front & Rear)
- ❖ Stabilizer Jacks (Rear Only)
- ❖ Stereo AM/FM - CD/DVD Player (Satellite Ready)
- ❖ Stereo AM/FM - CD Player (Satellite Ready)
- ❖ Solar Reflective Thermal Pane Windows
- ❖ Water Heater - LP/110V

Preferred Option Package:

- ❖ Auto Change Over (Propane Regulator)
- ❖ Fiberglass Propane Tank Cover
- ❖ Hidden TV Antenna (c/w TV Booster)
- ❖ Spare Tire and Carrier



25B17.5FB



▲ Front Bed (48" x 74")

Specifications	Units		25B17.5FB	
**Overall Length	ft-in	mtr	17'-5"	5.31
*Overall Height	ft-in	mtr	8'-8"	2.64
Overall Width	ft-in	mtr	8'-0"	2.44
Interior Headroom	ft-in	mtr	6'-4"	1.93
Base Dry Weight	lbs	kg	2885	1445
Average Hitch Weight	lbs	kg	280	127
Axle Weight Rating	lbs	kg	1x4400	1x1996
GVWR	lbs	kg	4300	1950
Tires		Size	ST225/75R15	
Fresh Water	US Gallons	litres	31	120
Grey Water	US Gallons	litres	21	83
Black Water	US Gallon	litres	21	83
LPG Capacity	lbs	litres	2 x 20	2 x 9
Water Heater	US Gallons	litres	6	23
Furnace		BTU	16,000	
Refrigerator (2 Way)	cu. ft.	litres	7	198

*To top of Refrigerator Vent
** Not including optional Front Cargo Box



▲ Galley and Dinette



▲ Galley and Bedroom

BIGFOOT WARRANTY

Bigfoot Industries provides a one-year limited warranty on all Bigfoot Products. In addition, Bigfoot Industries offers a three-year limited structural integrity warranty on all 1500 and 2500 Series models and a five-year limited structural integrity warranty on all 3000 and 4000 Series models.

Appliance warranties vary and are set by the respective manufacturer. Please contact your dealer for complete details regarding warranty policies.

The information contained herein is as accurate as possible at the time of publication. Subsequent refinements and improvements may be evident in the actual products. All liquid capacities are approximate and dimensions are nominal. Some equipment and features illustrated may be optional, or for presentation purposes only.

This brochure may not be used for contractual purposes. Bigfoot Industries reserves the right to improve or modify its products without prior written notice.

~ your local Bigfoot specialist ~

Bigfoot Industries

4114 Crozier Road, Armstrong, British Columbia, Canada, V0E 1B6 • Phone: 250-546-2177
Please visit our website at: www.bigfootrv.com or www.BigfootOwners.com