

Mesa Ridge



by  OPEN RANGE



MR274B
Kitchen and
Bunk House

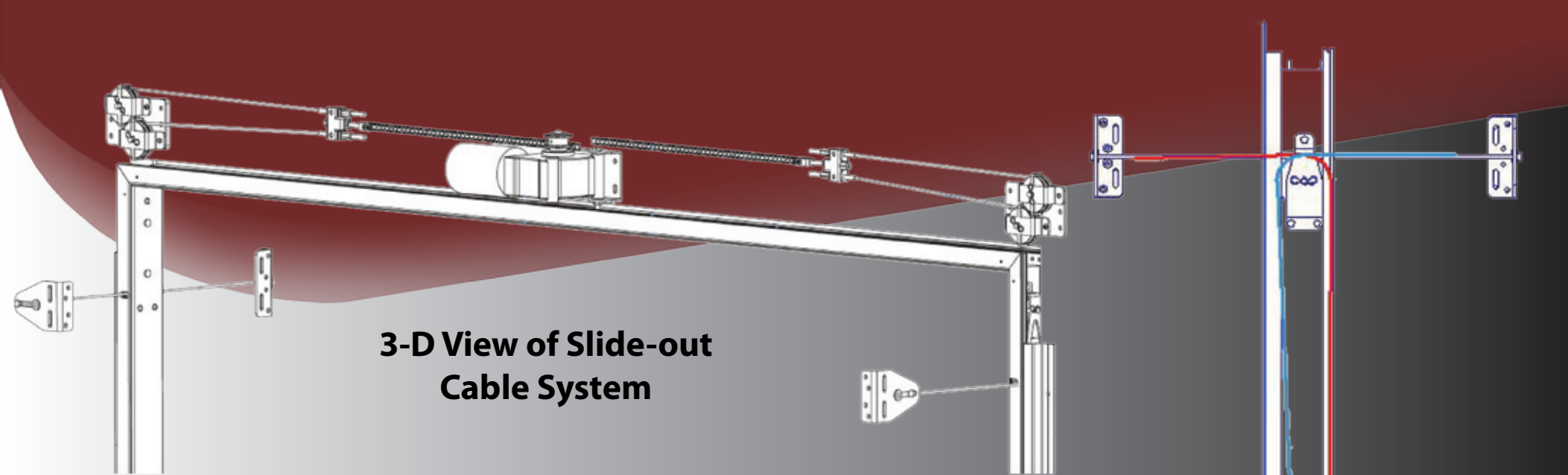


MR274B Dinette Booth in Lifelong



Pull Out
Waste Basket



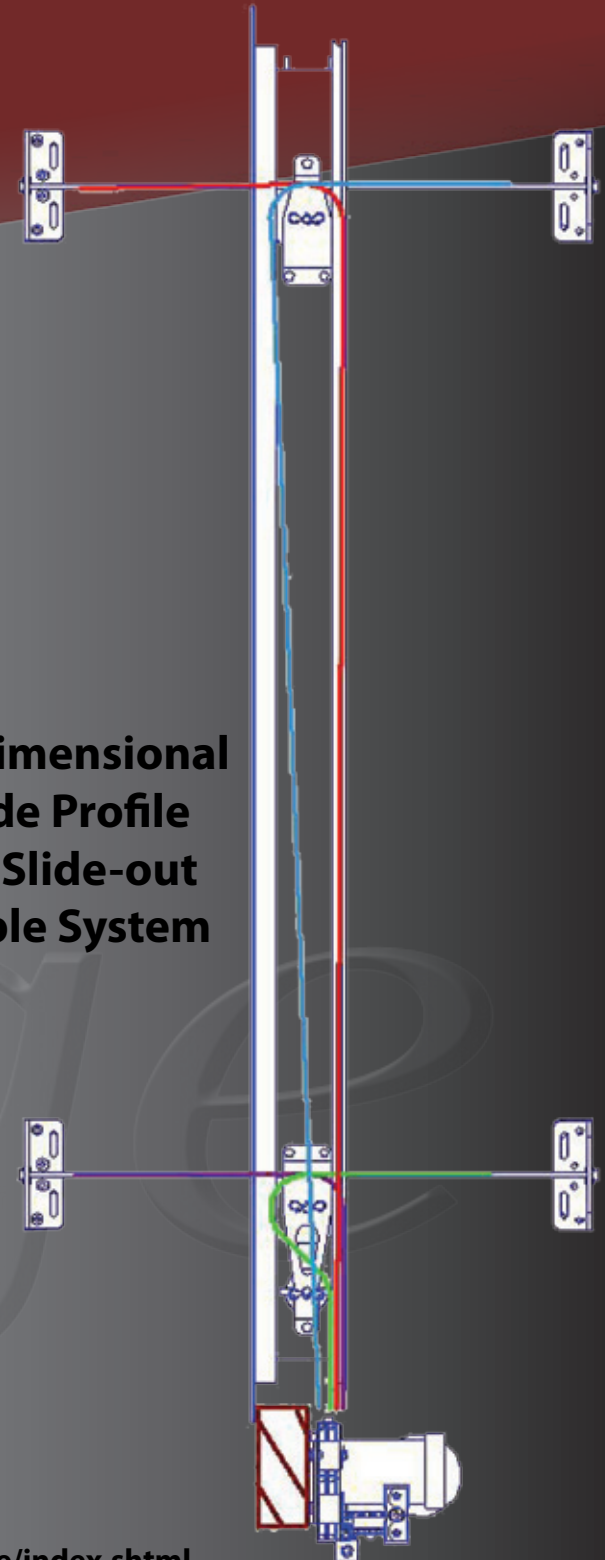


**3-D View of Slide-out
Cable System**

10 Reasons Why... Accu-Slide

- 1. Above floor design means more storage area for your RV**
- 2. Lightweight design promotes fuel savings**
- 3. High strength stainless steel aircraft cable is used for control**
- 4. Cable control at all 4 room corners helps stop leaks**
- 5. Working components are in your RV, safe from the elements**
- 6. Locking motor secures room in or out to help stop leaks**
- 7. Above floor design minimizes maintenance requirements**
- 8. A clean system - no leaky hydraulic lines or greasy drives**
- 9. Smooth, quiet room movement - no jumping or jerking**
- 10. It's built in the U.S.A. and backed by BAL since 1972**

1- Dimensional Side Profile Of Slide-out Cable System



Mesa Ridge

by OPEN RANGE



MR243F Entertainment Slide in LifeLong



Interior Features	
Interior Width (Without Slides)	96"
Slide Out Height	5'7"
Deep Main Slide	42"
Residential Carpeting and Rebound Padding	Std
Beaufort Resilient Flooring	Std
High Output Range with Oven	Std
Knotty Alderwood Cabinet Doors	Std
Screwed Together Wood Core Cabinet Styles and Rails	Std
Full Extension Drawer Guides with Steel Ball Bearings	Std
Pull Out Trash Can	Std
Aluminum Frame Dinette Base (Most Models)	Std
High Pressure Laminate Counter Tops & Edging	Std
Sink Covers	Std
Residential Size Sink Strainers (3")	Std
Sky Light Over Shower or Tub	Std
Swivel Rocking Chairs (On Select Models)	Std
Porcelain Toilet with Foot Flush and "Water Saver"	Std
Cable Hook Up	Std
Residential Size Innerspring Mattress	Std
Deluxe Bedspread and Pillow Shams	Std
High Output Microwave Oven	Std
Full System Electronic Monitor Panel	Std
Direct Satellite Connections to Each TV Jack	Pkg
Insulated Slide Floors	Pkg
32" LCD TV in Living Room	Pkg

Interior Features Cont.	
Hide-a-Bed	Pkg
Galley Sink Front Tip Out Trays	Pkg
Entertainment Center DVD/CD/AM/FM/Stereo	Pkg
Pull Out Pantry	Pkg
Double Door Refrigerator with "Custom Temperature Control"	Pkg
Forced Air Auto Ignition Furnace	Pkg
Outside Dual Speakers by Door Side	Pkg
Exterior Features	
Utility Center (Tank Flush, Dump Valve, Spray Hose, TV, Water, and Electric)	Std
Dexter "EZ LUBE" Axles	Std
Dexter "EZ Flex" Rocker Arm Suspension	Std
"Heavy Duty" Scissor Stabilizer Jacks	Std
Exterior Security Lights	Std
Optional Aluminum Wheels & Tire	15"
"Double" Extension Gutter Rails	Std
Full View front Window (Select Models)	Std
Stainless Steel Assist Grab Handle	Std
Amp Service	30 A
Water Heater Bypass Kit	Std

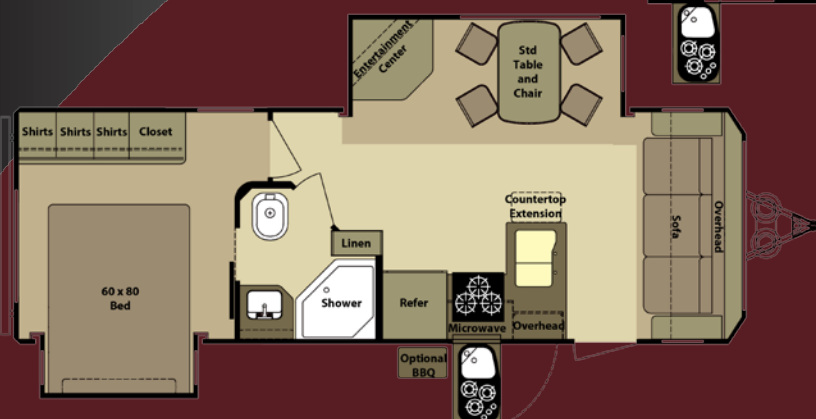
Exterior Features Cont.	
Heavy Tint Safety Glass Windows	Std
Plywood Floor and Plywood Walk on Roof	Std
Light Weight, High Gloss, Smooth Aluminum Exterior Walls	Std
MaxxAir Vent Cover	Std
Slam Latch Baggage Doors	Std
Under Mount Spare Tire	Std
Outside Cook Center	Std
Larger Triple 9" Entry Door Steps	Std
Nitrogen Filled Radial Tires	Std
60 Lbs LP Capacity	Std
Gas/Electric Quick Recovery Water Heater	6 Gal
Winegard® Digital TV Antenna with Power Booster	Pkg
Carefree Power Awning	Pkg
Heated and Enclosed Underbelly	Pkg
Double Insulated Baggage Door	Pkg
R38 Roof and R38 Floor Insulation*	Pkg
Rear Removable Exterior Ladder	Opt
BBQ Grill	Opt
Power Tongue Jack	Opt

*=Calculated

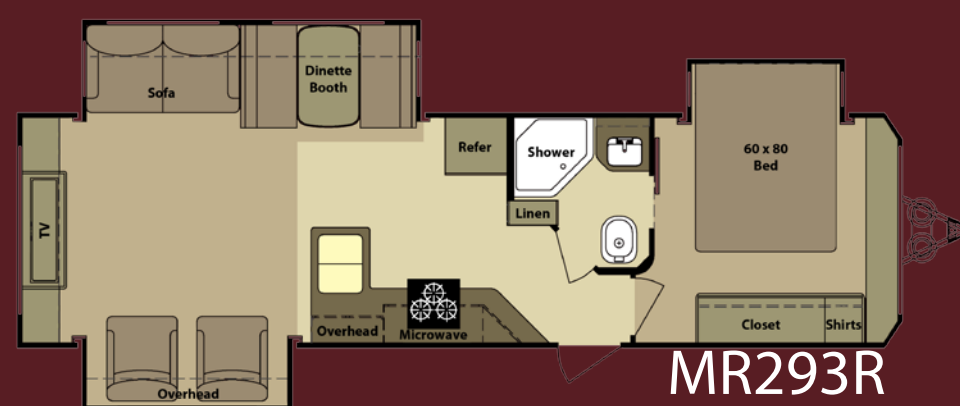
MR243F Kitchen & Dinette



MR274B

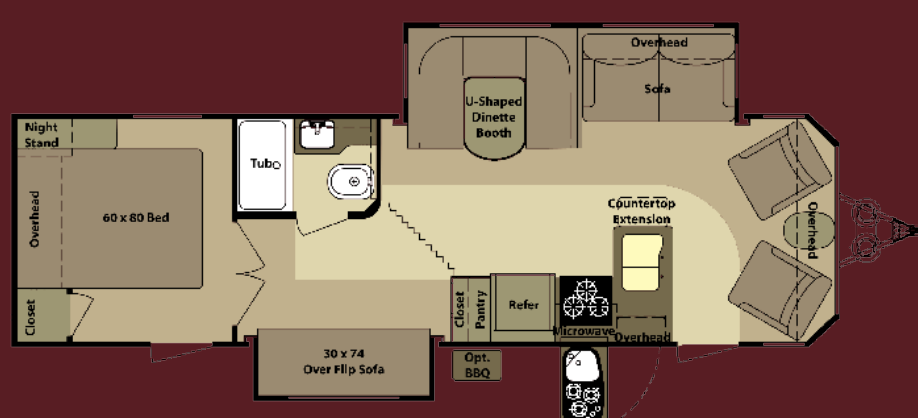


MR243F

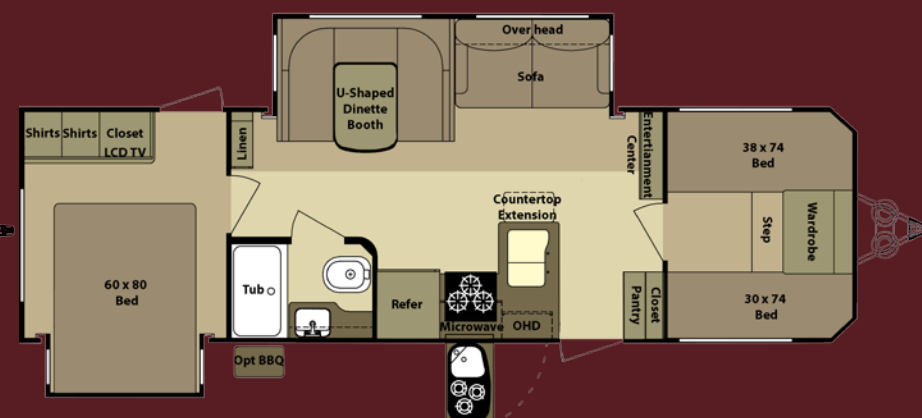


MR293R

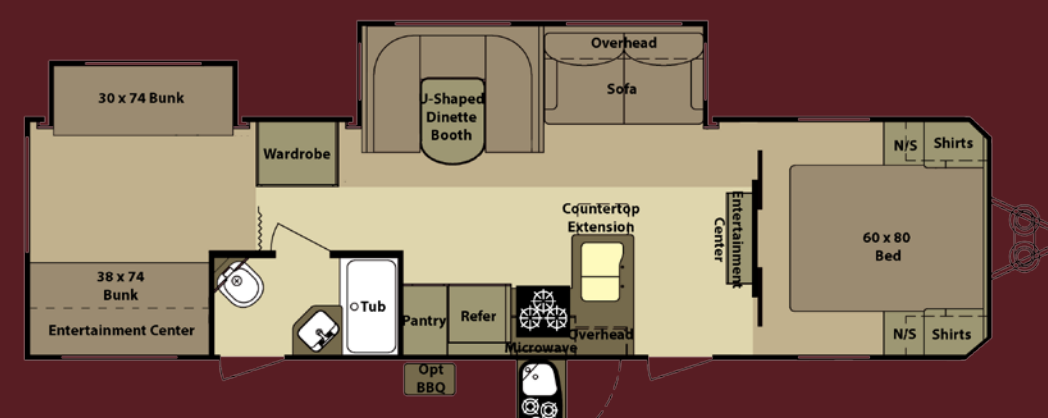
	GVWR	UVW	Hitch Wt.	Axle Wt.	Gross NCC	Ext. Length	Ext. Height	Ext. Width	Fresh Water (Gal)	Waste (Gal)	Grey Water (Gal)	Furnace BTU's	LP Gas (Lbs)
MR243F	9650	6635	850	5785	3015	29'	133"	100"	50	30	60	30,000	60
MR274B	9685	6625	885	5740	3060	32'	133"	100"	50	30	60	30,000	60
MR285F	9690	7185	890	6295	2505	33'	133"	100"	50	30	60	30,000	60
MR287B	9465	7195	665	6530	2270	33'	133"	100"	50	30	60	30,000	60
MR289H	10800	7350	400	6950	3450	34'9"	133"	100"	50	30	60	30,000	60
MR293R	11240	7540	840	6700	3700	34'6"	133"	100"	50	30	60	30,000	60
MR325B	11150	7705	750	6955	3445	36'8"	133"	100"	50	30	60	30,000	60



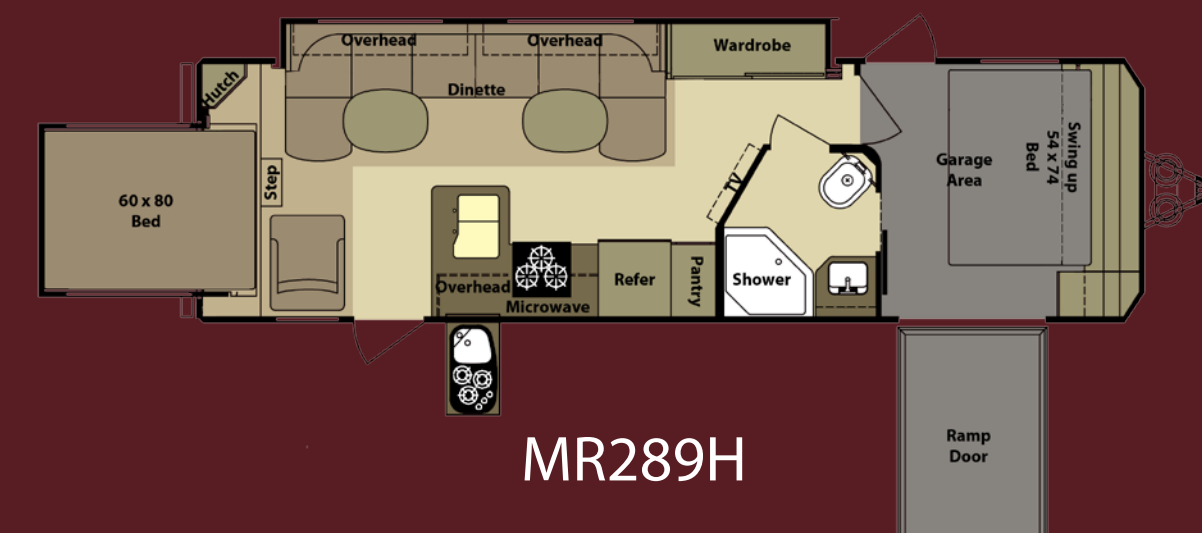
MR285F



MR287B



MR325B



MR289H



***RVDA DEALER
SATISFACTION INDEX***

Open Range RV Company is extremely proud and honored to have received the "Quality Circle Award" two years running now from the RVDA. It gives us great satisfaction that our dealers have distinguished our company and product from the competition. Open Range RV vows to continue the commitment to a quality product, company, and employee base.

**We at Open Range RV hope you choose to join our ever growing
RV family and that you remember to...**

Enjoy The Journey!



Open Range RV Company 3195 N. St. Rd. 5 Shipshewana, IN 46528

Phone: (260) 768-7771 - www.OpenRangeRV.com

Due to Continual research and advances , manufacturer reserves the right to change specifications, design, price, and equipment without notice, and assumes no responsibility for any error in the literature. Some items shown are not included as standard or optional equipment

©2010 Open Range RV Company, Shipshewana, Indiana

Your Open Range Dealer: