

# Sea Breeze

2 0 0 0



**SPECIFICATIONS  
FLOOR PLANS**

**NRV**<sup>INC.</sup>  
NATIONAL R. V., INC.



# STANDARD FEATURES

## Body Construction

- DURAFRAME™ Steel Sub Floor Construction
- Steel Framed Laminated Floor
- Steel Framed Crowned Laminated Roof
- Steel Framed Laminated Fiberglass High Gloss Walls
- Front & Rear Molded Fiberglass Caps w/ Spare Tire in Rear Cap
- Full Panoramic Tinted Windshield
- Soft Fabric Ceiling Material
- Electric Slide-Out Room w/ Overhead Cabinets (1340)
- Integrated Driving Lights in Front Bumper
- Integrated Front & Rear Bumpers
- Insulated Fiberglass Exterior Storage Compartment Doors w/ Integrated Latches & Gas Struts
- Steel Framed Exterior Storage Compartments w/ Insulated Bottoms
- Lighted Storage Compartments & Service Area
- Exterior Passenger Grab Handle
- Aluminum Rear Ladder
- Automotive Undercoating As Required
- Custom Vinyl Exterior Graphics

## Ford Chassis, Engine & Suspension (1331 & 1340)

- Four Wheel Anti-Lock Brakes
- Electronic Fuel Injection Gasoline Engine - Triton 6.8L V10
- 415 Cubic Inch Displacement
- 4-Speed Automatic Transmission w/ Overdrive (4R100)
- 75 Gallon Fuel Tank Capacity
- 130 Amp Alternator
- Rear Axle Ratio 5.38:1
- Front Leaf Spring Suspension - 7,000 lb.
- Rear Leaf Spring Suspension - 11,000 lb.
- Stainless Steel Wheel Liners
- Spare Tire & Wheel (Radial)
- Radial Tires
- Tire & Wheel Size - 245/70R x 19.5F
- 5,000 lb. Hitch Receiver & Electrical Connector

## Workhorse Chassis, Engine & Suspension (1300 & 1320)

- Four Wheel Anti-Lock Brakes
- Vortec Electronic Fuel Injected Engine (7.4L V8)
- 454 Cubic Inch Displacement (290 HP)
- 4 Speed Automatic Transmission w/ Overdrive
- 75 Gallon Fuel Tank Capacity
- 124 Amp Alternator
- Rear Axle Ratio - 4.63:1
- Front Coil Suspension - 5,500 lb.
- Rear Leaf Spring Suspension - 11,000 lb.
- Stainless Steel Wheel Liners
- Spare Tire & Wheel (Radial)
- Radial Tires
- Tire & Wheel Size IT225/70R - 19.5F
- 5,000 lb. Hitch Receiver & Electrical Connector

## Cockpit Features

- AM/FM Cassette Stereo w/ 4 Speakers
- Driver & Passenger Map Light (Dome Light)
- Custom Dash w/ Full Gauge Package
- Oak Drink/Cup Tray
- Audible Turn Signals
- Pantographic Windshield Wipers
- Power Steering
- Cruise Control
- Tilt Steering Wheel
- Electric Automotive Horn
- Rear Vision System w/ Rear Microphone Built-In
- Overhead-Dash Fans (Two Speed)
- Rosen Aviation Style Sun Visors
- Power Heated Mirrors
- Driver & Passenger Recliner Seats
- 12V / 120V Receptacle & Telephone Jack in Console
- Passenger Work Station
- Hydraulic Leveling Jacks w/ Dash Mtd Control Pad (1340)
- Generator Hour Meter & Control Switch on Dash
- 12V Outlet on Dash (Cigar Lighter)
- Auxiliary Start Switch on Dash

## Appliances & Accessories

- 8 Cu. Ft. Double Door Refer
- Coffee Maker
- 3 - Burner Cook Top w/ Flush Mount Corian Range Cover
- Spacemaker Convection Microwave Oven w/ Built-In Light & Fan
- Systems Monitor Panel
- Cable TV Hook-Up & Telephone Jack
- TV Antenna & Booster
- Video Control Box
- 19" Color TV w/ Remote Control

## Interiors

- Oak Paneling & Doors
- Solid Oak Raised Panel Cabinet Doors in Living Area
- Flat Panel Doors in Bath & Bedroom Area
- Solid Oak Drawer Fronts
- Telestrut Hardware on Overhead Doors & Pos. Catches on Others
- Ball Bearing Roller Drawer Guides
- Slide-Out Pantry (1300, 1320 & 1340)
- Corian® Kitchen Countertop
- Sink Cover (Wood Cutting Block)

- Porcelain Sink w/ Single Lever Faucet
- Laminate Bathroom Lavy Top
- Kitchen Waste Basket
- Full Length Beveled Glass Mirror
- Medicine Cabinet
- Towels Bars in Bathroom
- Queen Bed Head to Rear w/ Laminate Night Stands & Shirt Closets
- One Piece Designer Vinyl Floor in Kitchen & Bath
- Color Coordinated Bedspread, Pillows & Shams
- Radius Padded Headboard
- Fold Down Wonderbed Sofa
- Deluxe Rocker Recliner w/ Swivel Base (1331 & 1340)

- Booth Dinette w/ Slide-Out Storage Drawers
- Deluxe Nylon Carpet & Pad in Living Area & Bedroom
- Day/Night Shades w/ Designer Valances in Living Area
- Venetian Blinds & Valances in Kitchen & Bedroom

## Electrical Systems & Lights

- 50 Amp MagneTek Power Converter & Charger
- 50 Amp 120V Distribution Panel & Cord
- Generac 5.5 KW Generator
- Two 6V Deep Cycle House Batteries
- Battery Disconnect Switch for House Batteries
- Porch Light w/ Interior Switch
- 110V Patio Receptacle
- Recessed Fluorescent Lights in Ceiling
- Adjustable Reading Lights
- Designer Lights in Living & Bedroom Areas

- Cosmetic Light in Bathroom
- 5 Watt Solar Panel (Mounted on Top of A/C)
- GFI Protected Electrical Circuit
- Entry Step Light

## Plumbing & LPG Systems

- Demand Water System & Water Pump
- 6-Gal. LPG Water Heater w/ Electronic Ignition (DSI)
- Water Heater By-Pass Valve
- Pressurized Water Fill
- One-Piece Fiberglass Tub/Shower
- Glass Shower Door & Enclosure
- Porcelain Toilet w/ Sprayer
- Heated Systems Compartment w/ Easy Access to Hook-Ups

- Decorative Kitchen & Bath Faucets
- Holding Tank Rinse System (Black Tank Only)
- Outside Shower
- Winterization Antifreeze Inlet to Pump

## Safety Features

- Fire Extinguisher
- LPG Detector
- Smoke Detector
- Carbon Monoxide Detector
- Deadbolt Lock on Entry Door
- Driver & Passenger 3-Point Seat Belts (Lap & Shoulder)
- Egress Window(s)
- Extra Large Rear View Mirror w/ Double Convex

## Windows, Doors & Awnings

- Radius Tinted Safety Glass Windows (Sliding Windows in Living Area & Jalousie Windows in Kitchen & Bedroom)
- Radius Entrance Door w/ Clear Glass, Shade & Screen Door
- Power Entrance Step w/ Light
- Tinted Skylight in Bathroom
- Slide-Out Room Awning (1340)

## Heating, Vents & Air Conditioning

- Thermostatically Controlled Dual 13.5M BTU Ducted Roof A/Cs
- 35,000 BTU Electronic Ignition Furnace
- Ducted Heating System
- Attic Fan w/ Wall Thermostat & Rain Sensor
- 12V Roof Exhaust Fan in Bathroom
- Dash Automotive Heating & A/C System w/ Defroster

## Optional Features

- 13" Color TV w/ Remote (Bedroom)
- 8 Cu. Ft. Refrigerator w/ Icemaker
- 6-Way Power Drivers seat
- VCR w/ Remote
- Shower Privacy Decal
- 400 Watt Inverter
- Patio Awning
- 48" Bedroom Window Awnings (2)
- 21" LPG Gas Oven
- CD Player (10 Disc)
- 11 Ft. Slide-Out Window Awning
- 6-Gal. Gas/Electric Water Heater
- Corian® Countertop Extension
- Dual Pane Windows

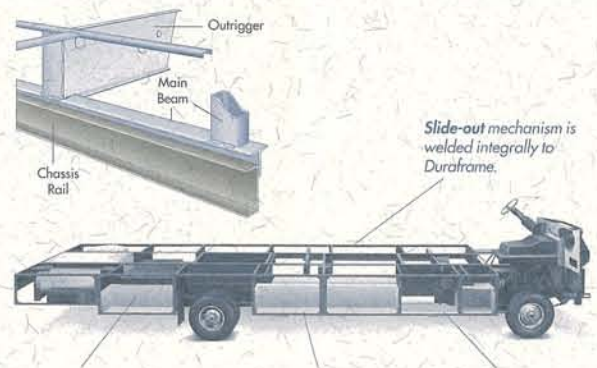
## THE PATENTED DURAFRAME

### COMPLETE CHASSIS STRENGTHENING

All-Welded steel Duraframe provides complete rigidity for the entire coach--eliminating reliance on the sidewalls and interior cabinetry. A better ride results from a more rigid frame and lower center of gravity.

### CAVERNOUS BASEMENT STORAGE

Fully insulated pass-through storage compartments offer the most versatility for storing odd-shaped objects.

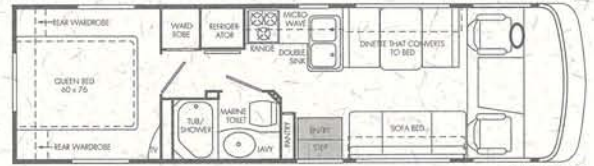


Luggage compartments are supported by Duraframe--not by coach cabin or floor.

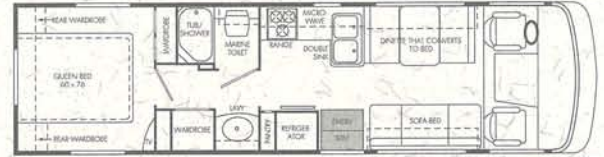
Duraframe is welded rather than bolted to the chassis.

All Steel lattice truss style construction provides shear and torsional strength.





MODEL 1300



MODEL 1320



MODEL 1331



MODEL 1340

## SPECIFICATIONS

<b>Weights (lbs.) - Ford</b>	1300	1320	1331	1340
Gross Vehicle Weight Rating	N/A	N/A	18,000	18,000
Gross Combined Weight Rating	N/A	N/A	23,000	23,000
Front Gross Axle Weight Rating	N/A	N/A	7,000	7,000
Rear Gross Axle Weight Rating	N/A	N/A	11,000	11,000
Unloaded Vehicle Weight	N/A	N/A	15,050	15,700
Maximum Carrying Capacity	N/A	N/A	2,950	2,300
<b>Weights (lbs.) - Workhorse</b>	1300	1320	1331	1340
Gross Vehicle Weight Rating	16,500	16,500	N/A	N/A
Gross Combined Weight Rating	21,000	21,000	N/A	N/A
Front Gross Axle Weight Rating	5,500	5,500	N/A	N/A
Rear Gross Axle Weight Rating	11,000	11,000	N/A	N/A
Unloaded Vehicle Weight	N/A	13,500	N/A	N/A
Maximum Carrying Capacity	N/A	3,000	N/A	N/A
<b>Measurements</b>	1300	1320	1331	1340
Wheelbase	190"	208"	228"	228"
Overall Length	N/A	32' 5"	33' 8"	34' 1"
Overall Height (Ford incl. A/C)	N/A	N/A	11' 3"	11' 3"
Overall Height (Wrks. incl. A/C)	11"	11"	N/A	N/A
Interior Height	77 1/2"	77 1/2"	77 1/2"	77 1/2"
Interior Width	92 1/2"	92 1/2"	92 1/2"	92 1/2"
Exterior Width	96"	96"	96"	96"
<b>Tank Capacities (gal.)</b>	1300	1320	1331	1340
Water Heater	6	6	6	6
Grey Tank #1	30	30	30	30
Grey Tank #2	18	18	18	18
Black Tank	40	40	40	40
Fresh Water Tank	70	70	70	70
LPG Tank	19	19	19	19