

# Invitation 2008

Follow your dream

INVITATION 2008





# Let the Good Times Roll

Here's an Invitation to follow your dreams! Hit the road to pursue your passions, whether that's migrating with the Sno-birds to warm southern climates or teeing it up on great golf courses across the continent. With an available 400 HP Cummins diesel and Allison six-speed automatic transmission as well as a dazzling array of driving features, Invitation will take you to your dream destinations in safety, comfort and style.



With 3 large windows and overhead skylights (A393T with triple slide), Invitation offers a bright, roomy, richly-appointed interior with all solid wood cabinetry and optional tile floor. The climate-controlled environment provides comfort in all seasons. The galley features a 4-door fridge, convection microwave, 21" oven, ample solid-surface countertops and all the amenities.



A decorative bedspread and matching ensemble of throw pillows and shams complement the residential quality 60" x 80" queen size bed. You'll love relaxing with the 20" LCD TV. Tasteful appointments include fabric-wrapped headboard, abundant wardrobe space – even for full-timers – and day/night pleated shades.



The residential dual pane skylight in the spacious neo-angle shower provides a refreshing wake-up for even the tallest traveler. A solid wood door ensures privacy.



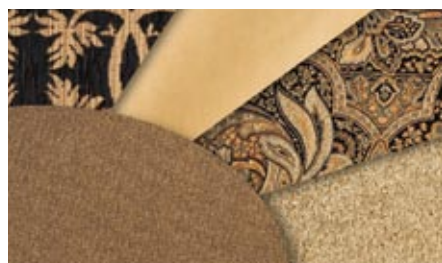
## Beautiful inside \_\_\_\_\_ and out



Whistler Lodge



Sundance



Masterpiece



Egyptian Sand



Natural Cherry



Ginger Spice Oak



Aztec



Cabernet



Forest Hill

First they afford optimal driving comfort, and then Invitation's Ultra-leather® captains chairs swivel to become part of a luxurious living area, featuring recliner rocker and loveseat as well as a convenient refreshment centre (as shown) and an overhead widescreen 32" LCD TV as shown in this A393T floor plan.



Specifications

Invitation 2008	A391Q	A392D	A393T
GVWR-LBS(KG)	31000(14061)	31000(14061)	31000(14061)
UVW-LBS(KG)	25099(11385)	TBD	23426(10625)
NCC-LBS(KG)	5901(2676)	TBD	7574(3435)
WHEELBASE-IN(mm)	252"(6401)	252"(6401)	252"(6401)
LENGTH-FT(mm)	39'6"(12940)	39'6"(12940)	39'6"(12940)
WIDTH-FT(mm)	8'4"(2534)	8'4"(2534)	8'4"(2534)
HEIGHT Incl.A/C-FT(mm)	12'7"(3835)	12'7"(3835)	12'7"(3835)
WATER TANK CAP:**-GAL(L)	102(386)	102(386)	102(386)
WATER HEATER	10(38)	10(38)	10(38)
BLACK HOLDING TANK CAP-GAL(L)	57(216)	57(216)	57(216)
GREY HOLDING TANK CAP-GAL(L)	57(216)	57(216)	57(216)
FUEL CAP-GAL(L)	100(379)	100(379)	100(379)
PROPANE CAP-GAL(L)	32(121)	32(121)	32(121)

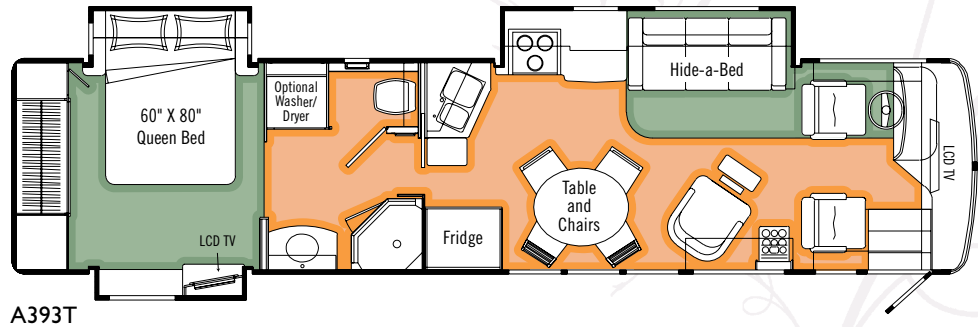
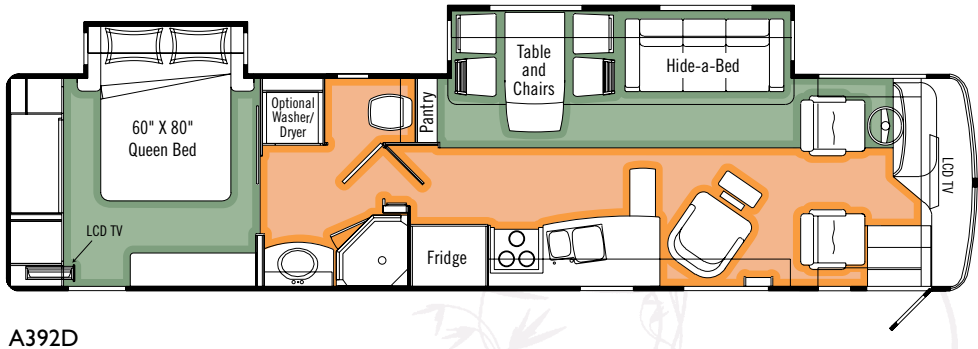
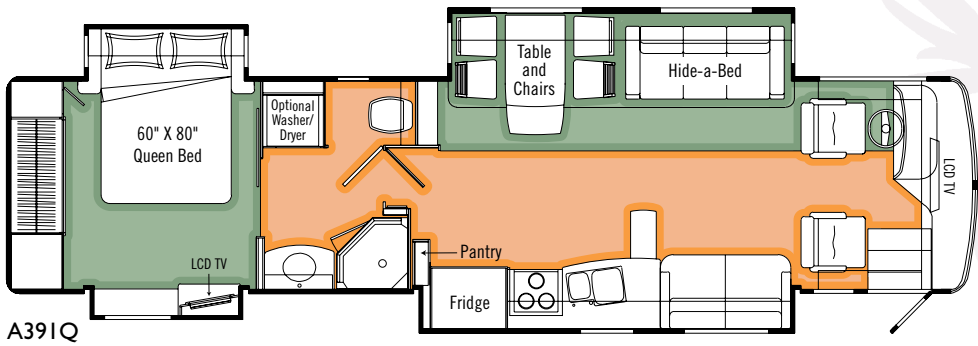
\*\*Includes Water Heater

**GVWR (GROSS VEHICLE WEIGHT RATING)**  
The maximum permissible weight of this motorhome. The GVWR is equal to or greater than the sum of the unloaded vehicle weight (UVW) plus the net carrying capacity (NCC).

**UVW (UNLOADED VEHICLE WEIGHT)**  
The weight of the motorhome as built at the factory. The UVW does not include cargo, fresh water, LP gas, factory or dealer installed accessories.

**NCC (NET CARRYING CAPACITY)**  
The maximum weight of personal belongings, food, fresh water, LP gas, tools, tongue weight of towed vehicle, factory and dealer installed accessories, etc., that can be carried by this motorhome. (NCC is equal to or less than GVWR minus UVW.) Please see your dealer for weights of factory installed options.

Floorplans



High Pressure Laminate      Carpet



# STANDARDS AND OPTIONS

	A391Q	A 392D	A393T
<b>CHASSIS AND SUSPENSION</b>			
Air Brakes - c/w Automatic Slack Adjusters	S	S	S
Air Suspension - c/w Sachs Tuned Shock Absorbers	S	S	S
Alternator 160 Amp	S	S	S
Block Heater (1000 W)	S	S	S
08 Chassis – Freightliner XC c/w Cummins ISC 360 HP / 1050 Ft Lb Turbo Diesel Raised Rail Rear Radiator w/ Exhaust Brake	S	S	S
08 Chassis – Freightliner XC c/w Cummins ISL 400 HP , 1200 Ft Lbs Torque Turbo Diesel Raised Rail Rear Radiator w/ 2 Stage Engine Brake	0	0	0
Clutched Radiator Fan	S	S	S
Front Air Disc Brakes	S	S	S
Fuel Fill - Concealed Locking Fuel Fill Access On Both Sides	S	S	S
Hitch - Trailer Hitch Receiver w/ wiring and plug - 1000 lb / 10,000 Lb	S	S	S
Tires- Radial – 255/70R22.5	S	S	S
Transmission - Allison 3000 MH Six Speed Automatic c/w Lock Up & Transmission Cooler	S	S	S
Wheels - Aluminum Wheels (Front and Outer Duals)	S	S	S
<b>DRIVERS AREA CONVENIENCES</b>			
Cameras - Side Turn Cameras	0	0	0
08 Cover - Hydraulic Powered Front Step Cover w/ Driver's and Passenger's Controls	S	S	S
Cruise Control	S	S	S
Dash Air and Heat - Dual Blower in Steel Cage	S	S	S
08 GPS - Garmin GPS (Display on Rear View Monitor) w/ Remote	0	0	0
Mirrors - Heated Remote Power Mirrors	S	S	S
Power Sunvisors	S	S	S
08 Rearview Camera/Monitor – Color LCD Display Mounted in Dash	S	S	S
Seat - Ultra Leather Driver Captain's Chair w/ 3 Point Seat Belt and 6 Way Power	S	S	S
Seat - Ultra Leather Passenger Captain's Chair	S	S	S
Steering Wheel - Tilt Telescopic	S	S	S
Switch - Battery Boost Switch (Coach to Chassis Batteries)	S	S	S
Switch - Battery Selector Switch for Radio	S	S	S
Wipers - Wet Arm 28" Windshield Wipers c/w Intermittent Function	S	S	S
<b>VEHICULAR</b>			
08 Air Horns	S	S	S
Bumper - Integrated Steel Reinforced Fiberglass Bumpers	S	S	S
Headlights - Halogen Styled	S	S	S
Jacks - HWH "One Touch" Automatic Leveling System c/w Manual Air Dump	S	S	S
Light - High Mount Stoplight – LED Long Life	S	S	S
Lights - Halogen Automotive Driving Lights	S	S	S
Mud Guard - Monogrammed Triple E Rear Mudguard (Stainless Steel on Rubber)	0	0	0
Undercoating - Automotive Type	S	S	S
<b>CONSTRUCTION</b>			
Baggage Compartments - Lined Floor, lit	S	S	S
Baggage Doors - Aluminum Baggage Doors c/w Gas Struts and Slam Latch	S	S	S
Baggage Doors - Side Swing Baggage Doors under Galley Slide c/w Gas Struts and Slam Latch	S		S
Gelcoat Fiberglass Molded Front & Rear Mask	S	S	S
Gelcoat Vetrolite Fiberglass Sidewalls	S	S	S
Roof - Domed Kemlite FRP Flexroof	S	S	S
Steel Cab Floor, Firewall and Dash Structure	S	S	S
Vacuum Bonded Aluminum Framed Insulated Sidewall Construction with Thermal Break	S	S	S
Vacuum Bonded Aluminum Framed Insulated Roof Construction	S	S	S
Vacuum Bonded Steel Framed Insulated Floor Construction	S	S	S
Windows - Tinted Radius Corner Thermal Pane Windows	S	S	S
<b>EXTERIOR</b>			
Cargo Slide - Mounted in Forward Baggage Bay	0	0	0

	A391Q	A 392D	A393T
<b>EXTERIOR (con't)</b>			
Cargo Slide - Mounted in Rear Baggage Bay	0	0	0
Diamondshield® Paint Protection Film on Front End	0	0	0
Door - Screened Entry Door with Deadbolt Lock	S	S	S
Handle - Entry Door Assist Handle (Interior Mounted)	S	S	S
Handle - Exterior Assist Handle - Monogrammed	S	S	S
Ladder - Exterior Ladder c/w Detachable Lower Section	S	S	S
Lights - Deluxe Patio Light	S	S	S
Lights - Side Docking Lights	S	S	S
Paint - Full Body Exterior Paint with Clear Coat	S	S	S
Painted Exterior Graphics	S	S	S
Step - Electric Retractable Entry Step	S	S	S
<b>INTERIOR</b>			
08 84" Interior Ceiling Height	S	S	S
08 Cabinetry - Solid Oak Cabinet Doors w/ European Hidden Hinges, Solid Oak Face Framing, Solid Wood Veneer Panels	S	S	S
08 Cabinetry - Solid Cherry Cabinet Doors w/ European Hidden Hinges, Solid Cherry Face Framing, Solid Wood Veneer Panels	0	0	0
Ceiling - Flat with Padded Vinyl Headliner	S	S	S
Detectors - Electronic Smoke, LP and CO	S	S	S
Drawers - Full Extension Ball Bearing Drawer Tracks	S	S	S
Fire Extinguisher - Dry Chemical	S	S	S
08 Flooring - Ceramic Tile in ILO Tile Look High Pressure Laminate Flooring	0	0	0
Flooring - Tile Look High Pressure Laminate Flooring in Galley extended to meet front door area	S	S	S
Insulated Vent Covers	0	0	0
Keylock Safe Box	S	S	S
Latches - Snap Latches on all Cabinet Doors and Drawers.	S	S	S
Lighting - Halogen Lighting in Living Area	S	S	S
Lighting - Fluorescent Lights in Front Entrance	S	S	S
Lighting - Courtesy Floor Lamps	S	S	S
Skylights - 2 Dual Pane Skylights above dining table			S
Shades - Day/Night Pleated Shades in Living Area	S	S	S
Slide Out - Electric Bed Slide	S	S	S
Slide Out - HWH Flush Floor Hydraulic Driver's Side Slide Out	S	S	
Slide Out - Electric Slide - Bedroom Dresser	S		S
Slide Out - HWH Hydraulic Galley Slide	S		S
<b>FURNITURE</b>			
Booth Dinette - with Slide Out Drawers	0	0	
Cabinet - Refreshment Center		0	0
Chairs - Two Additional Fixed Chairs	0	0	0
Easy Bed - Ultra Leather on Passenger's Side	S		
08 Hide a Bed - Cloth Hide-A-Bed on Driver's Side w/ Air Coil Mattress	S	S	S
Hide a Bed - Ultra Leather Hide-A-Bed on Driver's Side includes Air Coil Mattress	0	0	0
Recliner - Ultra Leather Recliner with Solid Oak Flip Table		S	S
08 Table - Solid Oak Extendable Free Standing Table & 2 Fixed and Two Folding Chairs c/w hutch	S	S	
Table - Solid Wood Oval Table with Drop Leaves - 2 Fixed and 2 Folding Chairs			S
<b>GALLEY</b>			
Bi-fold Solid Surface Range Cover	S	S	S
Countertop - Solid Surface Counter in Galley with Stainless Steel Undermount Sink	S	S	S
08 Micro/Convection Oven - Stainless Steel Finish (OTR) c/w 110v Range Hood and Light	S	S	S
Oven - 21" Glass Door Oven ILO Drawers Under the Cooktop	0	0	0
08 Refrigerator - 4 Door 12 cu. Ft. c/w Ice Maker and Water in the Door - LP/Electric, Stainless Steel Finish Doors w/ Ignition Lock	S	S	S

## STANDARDS AND OPTIONS

	A391Q	A392D	A393T
<b>LAVATORY</b>			
Cabinet - Wood Finish Medicine Cabinet c/w Mirror	S	S	S
<b>08</b> Corian Vanity Countertop with Undermount Solid Surface Sink	S	S	S
Shower - Fiberglass Enclosed Neo Angle Shower - with Glass Enclosure	S	S	S
Skylight - Residential Dual Pane Neo Angle in Shower	S	S	S
Toilet - Sealand 510 - China - Foot Flush with Sprayer	S	S	S
Window with Valance and Venetian Blind in Toilet Room	S	S	S
<b>BEDROOM</b>			
<b>08</b> Bedspread - Decorative Bedspread and Throw Pillows w/ Decorative Throw	S	S	S
Headboard - Fabric Wrapped	S	S	S
Lights - Wall Switched Lights on Ceiling	S	S	S
Mattress - Residential Quality Queen (60" x 80")	S	S	S
Mattress - Upgrade	0	0	0
Shades - Day/Night Pleated Shades w/ Blackout	S	S	S
Storage - Under bed Storage Drawer	S	S	S
<b>ENTERTAINMENT</b>			
CD Changer - 10 Stack CD Changer	0	0	0
Satellite Dish - Motosat 18" Executive w/ DVB Automatic Acquisition and Identification	0	0	0
<b>08</b> Satellite Dish - Explorer Dish for Starchoice - Automatic Acquisition	0	0	0
<b>08</b> Satellite Dish - High Definition Satellite Dish (HD on Living Area TV Only) - Motosat	0	0	0
Satellite Dish - Winegard with Electronic Elevation Sensor	0	0	0
Satellite Radio Prewire - including Satellite Antenna (Subscription not Included)	0	0	0
<b>08</b> Stereo - AM/FM CD and DVD Stereo in Bedroom with Alarm Clock	S	S	S
<b>08</b> Stereo - Home Theater System - 5 Channel Stereo with Subwoofer	S	S	S
Stereo - Exterior AM/FM - CD Stereo with Shielded Speakers	0	0	0
Stereo - AM/FM/CD/MP3 Sirius Ready Player in Dash w/ Wireless Remote and Auxiliary Input	S	S	S
Telephone & Cable TV Hookup - Exterior	S	S	S
TV - AC 20" LCD Color Stereo TV c/w Remote in Bedroom	S	S	S
<b>08</b> TV - AC 32" Flat Screen LCD TV c/w Remote in Overhead Cabinet	S	S	S
TV Antenna - Roof Top Retractable Antenna c/w Booster w. Dash Mounted "Antenna Up" light	S	S	S
<b>HEATING VENTILATING AND AIR CONDITIONING</b>			
Air Conditioner - Dual (2) Centrally Ducted 13,500 BTU w Heat Strip and Remote Return Air	S	S	S
Fan - Fantastic Non Reversible In Lavatory w/ Wall Switch	S	S	S
Fan - Fantastic Non Reversible In Toilet Room w/ Wall Switch	S	S	S
Fan - Fantastic Reversible Thermo Fan In Bedroom w/ Wall Switch	S	S	S
Furnace - Central Forced Air Furnace - 40,000 BTU	S	S	S
Heater - Dual Rear Auxiliary Automotive Heaters c/w Electric Control Valves	S	S	S
<b>ELECTRICAL</b>			
Batteries - Deep Cycle Coach Batteries- 2 X 6 volt on Sliding Tray	S	S	S
Bi-Directional Isolator Relay Delay (BIRD) Battery Charging	S	S	S
Converter - 120/12 Volt c/w Charger & Automatic Changeover Relay	S	S	S
Generator - 5.5 KW Onan Quiet Diesel on Slide Out Tray w/ Hour Meter in Convenience Center	S	S	S

	A391Q	A392D	A393T
<b>ELECTRICAL (con't)</b>			
<b>08</b> Inverter - 2000 Watt Inverter c/w 100 Amp Charger with Remote	0	0	0
Inverter - 600 Watt (For Front TV, Bedroom TV, Home Theater, Sat Receiver)	S	S	S
Panel - 50 Amp Electrical Service c/w Energy Management System	S	S	S
Prewire - 110V/12V Receptacles in Baggage Compartment (Freezer Prep)	S	S	S
<b>08</b> Prewire - For Solar Panel	S	S	S
Prewire for Electric Awning	S	S	S
Receptacle - Patio GFI Receptacle	S	S	S
Switch - Electronic Battery Disconnect (Coach Batteries) Above Entrance Door	S	S	S
<b>PLUMBING AND LP SYSTEMS</b>			
Black Tank Flush System	S	S	S
Exterior Shower	S	S	S
Holding Tanks - Enclosed and Insulated, Dual Heated Waste Holding Tanks	S	S	S
LP Tank - Easy Access Propane Tank	S	S	S
Rough In for Washer/Dryer	S	S	S
Systems Monitor Panel in Convenience Center	S	S	S
Water Filter - Whole House Water Filter in Utility Module	S	S	S
Water Heater - Electronic Ignition LP/Electric/ Motoraid Water Heater (10 gal.)	S	S	S
Water Heater By-Pass Valve	S	S	S
Water Tank - Enclosed and Heated Fresh Water Tank w/ Gravity Fill	S	S	S
Winterization System c/w Pick Up Kit	S	S	S
<b>SYSTEMS</b>			
<b>08</b> Central Vacuum with Outlet in Baggage Compartment	S	S	S
Washer/Dryer (vented)	0	0	0
<b>CERTIFICATION</b>			
Factory P.D.I.	0	0	0
<b>AWNING PACKAGES</b>			
<b>08</b> Manual Awning Package includes:	S	S	S
Front Door Awning - A&E Oasis Manual			
Weathershield Equipped A&E Elite Slide Toppers (Number of Awnings Shown)	3	2	3
Weathershield Equipped 2 Step - Acrylic - 19'			
Power Awning Package includes:	0	0	0
Front Door Awning - A&E Oasis Power w/ Remote			
Weathershield Equipped A&E Elite Slide Toppers (Number of Awnings Shown)	3	2	3
Weathershield Equipped Weatherpro Power - Acrylic w/ Remote and Wind Sensor - 19'			
Weathershield Equipped A&E Elite Window Awnings (Main Slide Windows & Bedroom Window)	0	0	0
<b>CUSTOMER VALUE PACKAGE (Mandatory Option)</b>	M	M	M
CB Antenna - Includes Coax Lead in under Dash			
Fan - Overhead Blower Above Windshield			
Fan - Reversible Thermostatically Controlled Fantastic Fan in Living Area w/ Wall Switch			
Pillows - Coordinated Pillows For Living Area			
Prewire - Satellite Dish (with 12V Power and 110V)			
Rust Protection			



**Triple E Recreational Vehicles** P.O. Box 1230, Winkler, Manitoba, Canada R6W 4C4 Telephone: (204) 325-4361 Fax: (204) 325-5241

Triple E Recreational Vehicles are designed and built to meet or surpass CSA-RVIA standards covering electrical services, gas services, plumbing services and vehicular safety. Invitation Motorhomes exceed 96" in width. In some states, 96" is the maximum width of vehicles travelling some or all state roads. It is the responsibility of the owner to be familiar with the road usage laws of the states in which you travel. Product improvement is a continuing process at Triple E Recreational Vehicles. We reserve the right to change specifications on any or all products without prior notice; errors and omissions excepted. Triple E Recreational Vehicles is under no obligation to undertake modification to units manufactured prior to changes on specifications. Brochure pictures may be shown with optional equipment. Colours may not be exactly as shown due to the printing process. Please see your dealer for specific colours.

