

05 Cambria™

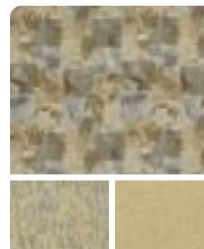




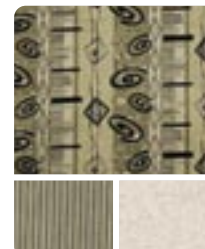
26A Espresso with Washed Maple

05 Cambria | Low profile. High design.

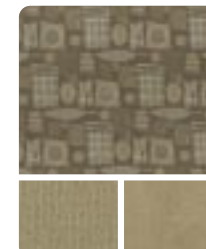
There's a new breed of motor home hitting the roads. It's sleek. It's aerodynamic. It's everything you love about motor homes in an easy-to-use, fun-to-drive vehicle designed for those with an active lifestyle. The low-profile Cambria is the latest addition to the Itasca lineup of Class C motor homes. SmartSpace™ design elements make the most of the available space to give the Cambria a roomy interior. With a front slideroom, tinted windows and a quiet ride, it's the perfect vehicle for weekend getaways.



Blue Lapis



Moonstone Green



Espresso



Washed Maple Sierra Maple

➡ **The more time you spend in your Cambria, the more you'll discover and appreciate subtle features** such as day/night pleated shades, wall-mounted switches for the ceiling lights, and thermostat-controlled heating and air conditioning. The Coleman® Polar Mach® high-efficiency roof air conditioner provides maximum cooling power and you can add the available heat pump to warm the coach without firing up the furnace. Of course, the Cambria has an abundance of residential features like premium Stitchcraft furniture, a double bed (26A) and a full bathroom with a residential-height toilet, shower and skylight.



The hoop-base swivel/glider chair is especially relaxing. It moves easily to your favorite location and locks in place while traveling. It's standard on the 26A (NA 23D).



You'll enjoy making meals in the galley that contains a 3-burner Magic Chef® range with oven (also available a range top with storage below), built-in microwave and vented range hood with light. The cover for the double-bowl sink gives you extra countertop space and a pullout wire pantry takes advantage of the available space next to the refrigerator. A water filtration system is also available.



23D *Blue Lapis with Sierra Maple*

The Cambria makes a great weekend getaway. The front entertainment center with a 24" flat-face stereo TV can be upgraded with a Deluxe Sound System that includes 5-channel QSURROUND™ Sound and a 24" flat-face Sony TV. Choose the available 300 watt inverter and enjoy your entertainment features even when you're not connected to shoreline or generator power. Both the couch and dinette convert quickly into comfortable beds on the 23D.

The Cambria 26A incorporates an exclusive crescent-shaped dinette with flip-up extension. It offers more seating, pullout storage and a great view of the TV. The whole dinette converts into a large, comfortable 45" x 82" bed at night.





The Cambria offers automotive-style driving and performance with well-placed controls. Standard features include power windows and door locks. You'll also notice Itasca's popular RV Radio.® Our engineers worked closely with the manufacturer to create the RV Radio designed specifically for RV use. It includes an AM/FM stereo, cassette, CD player and a built-in weather band for immediate weather updates at the touch of a button. Its large control knobs and buttons are easy to operate. For added convenience there are two remotes; one is hand-held for use when you're parked and one is attached to the steering wheel when you're on the go.



We understand the importance of a comfortable cab seat, which is why the Stitchcraft seats in the Cambria have high backs, multiple adjustments and fixed lumbar support. Cover your seats in the available UltraLeather HP™ for a softer, more luxurious look and feel.



The available rearview LCD monitor is built into the sunvisor where it is most visible, yet it flips completely out of sight when not needed.



Forget fumbling for the right key. The remote keyless entry locks and unlocks the driver, passenger and entrance doors.



Keep in touch with family and friends using the available two-way radios with up to a 5-mile range. The set of four is housed in a built-in charging station.



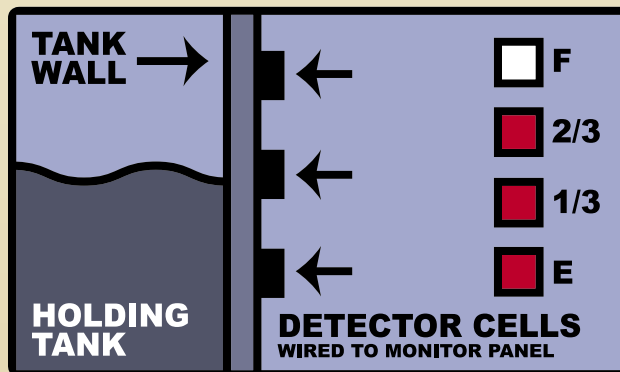
Cup holders and a storage compartment are contained in a sleek TrimLine™ console that offers plenty of legroom between the cab seats and easier access to the living area from the cab.



Enjoy the weather and your favorite music when you choose the available exterior entertainment center. A lockable compartment includes an AM/FM radio, CD player w/remote, 12-volt DC receptacle, TV jack, 110-volt outlet, speakers and a removable TV table.



A hitch comes standard for towing vehicles and trailers. It has a fixed-mount female socket connector and a 5,000-lb. towing capacity with a 350-lb. maximum vertical tongue weight.

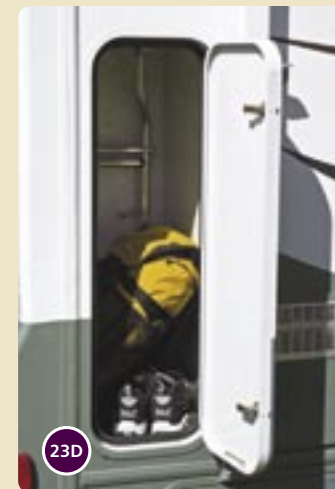


TRUELEVEL
HOLDING TANK MONITORING SYSTEM

Winnebago Industries exclusive TrueLevel™ holding tank monitoring system incorporates Mirus™ detector cell technology to ensure accurate fresh and waste water tank level readings. Mirus detector cells produce a micro-electrical field that detects liquid levels from outside the tank. No more probes to corrode or clog. Just true, accurate readings time after time.



No trees? Make your own shade with the available patio awning. The available deluxe graphics package includes an upgraded box-style awning.



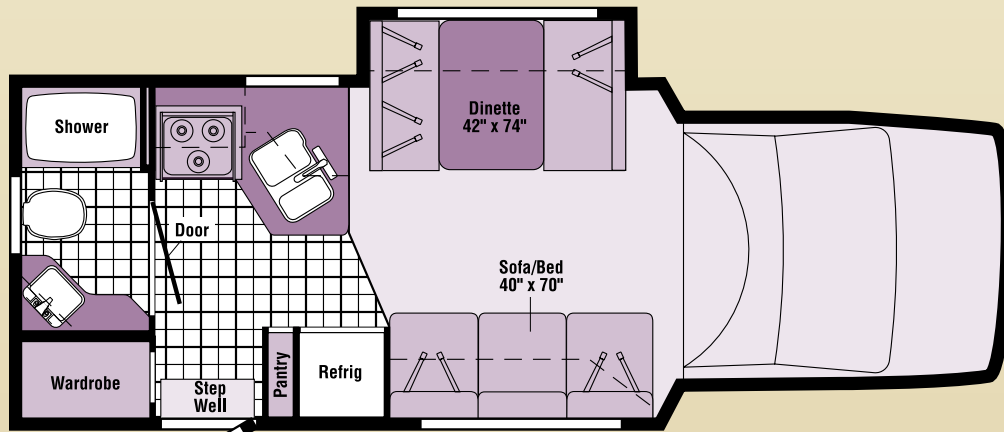
Cambria features spacious exterior storage for easy access to all your gear.



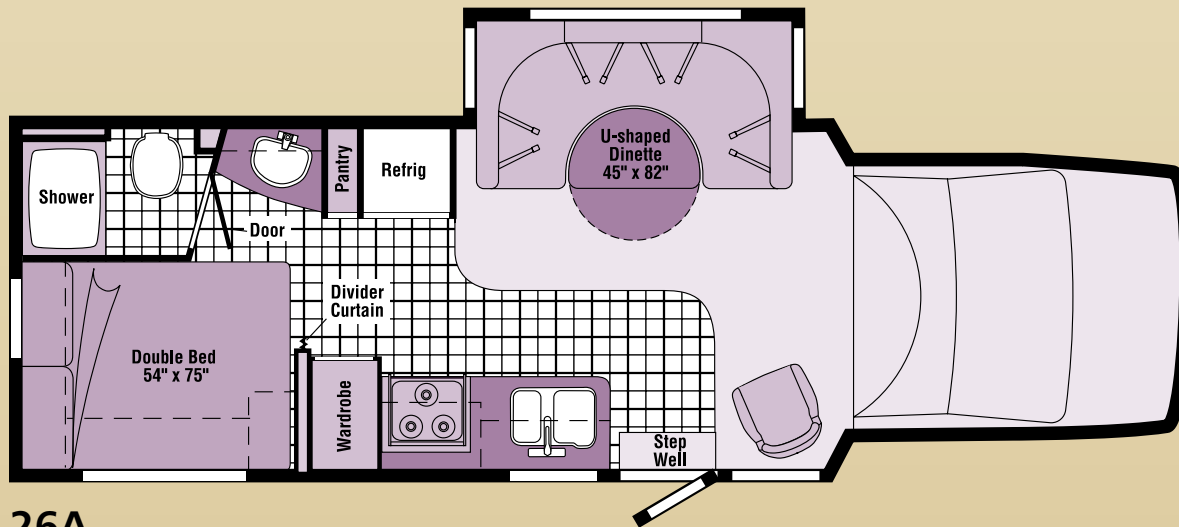
Keep maps, pamphlets or magazines in the handy pocket on the driver and passenger doors.



05 Cambria | FLOORPLANS



23D



26A



Vinyl
Floorcovering



Seat
Belts

Note: Dimensions shown are for sleeping space only and may vary due to styling differences. Dashed lines denote overhead storage areas.

EXTERIOR DESIGN

Whether you choose a **standard graphics package** or the available **deluxe graphics package**, the Cambria is one of our most striking motor homes. The deluxe package includes a silver cab with enhanced stylized body paint and painted running boards with wheel lips. The available, flush-mounted, dual-glazed/thermo-insulated windows add comfort in both warm and cool weather.



Standard Graphics – Cypress Green Metallic



Standard Graphics – Spruce Green Metallic



Deluxe Graphics – Granite Metallic



Deluxe Graphics – Light Bronzemist Metallic




05 Cambria | SPECIFICATIONS

Weights & Measures	23D	26A
Length	23'7"	26'6"
Exterior Height ¹	10'2" ■ / 10'3" □	10'
Exterior Width	7'11.2"	7'11.2"
Exterior Storage ³ (cu. ft.)	19.2	43
Interior Height	6'5"	6'5"
Interior Width	7'8"	7'8"
Fresh Water Capacity w/Heater ⁸ (gal.)	34	44
Holding Tank Capacity ⁹ – Black / Gray (gal.)	24/30	32/37
LP Capacity ⁵ (gal.)	18	18
Fuel Capacity (gal.)	55	55
GCWR ² (lbs.)	18,500 ■ / 20,000 □	20,000
GVWR (lbs.)	11,500 ■ / 14,050 □	14,050
GAWR – Front (lbs.)	4,600 ■ / 4,600 □	4,600
GAWR – Rear (lbs.)	7,800 ■ / 9,450 □	9,450
Wheelbase	158"	182"

■ Ford® Standard □ Ford® Optional

23D	26A	Automotive
S	S	Chassis – Ford® E350, 6.8L Super Duty V10 SOHC Triton® engine, 306 hp, automatic 4-speed overdrive transmission (5-speed Fall 2004), 4-wheel ABS, 130 amp. alternator, dual airbags
O	S	Chassis – Ford® E450, 6.8L Super Duty V10 SOHC Triton® engine, 306 hp, automatic 4-speed overdrive transmission (5-speed Fall 2004), 4-wheel ABS, 130 amp. alternator, dual airbags
S	S	Tire spare, Tire Tool wrench, Trailer Hitch ² 5,000-lbs. draw bar/350-lbs. maximum vertical tongue weight & wiring, Wheel Liners stainless steel
O	O	Wheels stylized aluminum

23D	26A	Cab Area & Driver Conveniences
S	S	Cab Seats (Fabric) w/3-point adjustable seat belts, armrest, fixed lumbar support, multi-adjustable slide/recline, Cigarette Lighter/12-Volt DC Powerpoint , Cruise Control , Curtain cab divider, Domelight , Floor Mats rubber (driver & passenger), Hood Release , Power Door Locks w/remote control, driver/pass/main entry , Power Cab Windows , Rearview Mirror adjustable, Steering Wheel tilt w/power assist, Sunvisors (2) , TrimLine™ Beverage Holder storage tray, tip-out bin, cupholders, Trim Panels driver & passenger doors w/map pocket
O	O	Cab Seats UltraLeather HP™
O	O	Instrument Panel Appliques & Beverage Cover
O	O	Monitor System rearview w/single camera, LCD monitor mounted in sunvisor, Audiovox®

23D	26A	Entertainment
S	S	 (Cab) AM/FM/stereo, cassette/CD player w/weather band, speakers (4) w/remotes, Radio Power Switch main/auxiliary, Satellite System Ready , TV 24" flat face, color AC stereo w/remote, TV Antenna (amplified), 12-volt DC powerpoint, interior jack, coax wiring, cable input
O	O	DVD/VCP combo, stereo w/remote
O	O	Entertainment Center (Exterior) AM/FM radio w/CD player & remote, DC receptacle, AC duplex receptacle, TV jack, radio antenna, speakers (2), lockable compartment, removable table
O	O	Radios (4) 2-way, docking port w/charger
O	O	Satellite Dish Antenna RV digital, manual
O	O	Satellite System RV digital, in-motion, elevation sensing unit
O	O	Sound System Deluxe w/5-channel QSsurround™ sound, amplifier, speaker system

23D	26A	Interior
S	S	Ceiling fabric, Clock recessed, Light decorative overhead, dinette, Lights ceiling, incandescent w/wall switches, Light(s) courtesy, 12-Volt DC Powerpoint , Shades day/night pleated (lounge, dinette & bedroom), Mini Blinds (galley & bath), Roof Vent non-powered, lounge
	S	Lamps (2) decorative wall, dinette
O	O	Roof Vent powered ventilator fan, lounge
S	S	Wardrobe wood-panel door, shelf
O	O	Windows flush-mounted, dual-glazed/thermo-insulated

23D	26A	Cabinetry
O	O	Sierra Maple stile-and-rail construction, raised-panel inserts on upper doors
O	O	Washed Maple stile-and-rail construction, raised-panel inserts on upper doors

23D	26A	Countertops
S	S	Laminate w/T-mold edge

23D	26A	Floorcovering
S	S	Carpeting w/pad, Vinyl bath, galley

23D	26A	Furniture
S		Dinette w/access to storage below
	S	Dinette U-shaped w/access to storage below, slideout baskets
	S	Chair lounge, hoop-base, swivel/glider
S		Sofa

23D	26A	Galley
S	S	Faucet single-control, Galley Cabinet , Microwave Oven touch control, Pantry , Range 3-burner w/oven, Magic Chef®, Range Hood vented w/light & fan, Receptacle duplex, Refrigerator/Freezer double-door, two-way, Norcold® Sink double-bowl, molded w/sink cover, Wall Border
	S	Countertop flip-up extension
O	O	Microwave/Convection Oven touch control
O	O	Range Top 3-burner, drawer below
O	O	Water Purification System

23D	26A	Bath
S	S	Cabinet lavatory, Cabinet medicine, Clothes Rod removable, Faucet (lavatory) dual-control, Faucet (shower) dual-control w/flexible showerhead, Light shower, Roof Vent powered, Shower wall surround, Shower Door folding, Skylight , Tissue Holder , Toilet w/foot-pedal flush, Towel Rack 3-rod, mounted to door, Towel Ring
S		Sink rectangular w/molded soap dishes
	S	Sink oval
	S	Towel Bar

23D	26A	Bedroom
	S	Bed double, bedspread, pillow shams, pillows
	S	Shirt Closet
	S	Wardrobe mirrored door, shelf

23D	26A	Exterior
S	S	Awning Rails w/rain gutters, Door entrance w/separate screen door, deadbolt lock, remote keyless entry, Entrance Door Step single, manual pull-out, Graphics Packages⁴ Cypress Green Metallic or Spruce Green Metallic, Ladder , Light porch w/interior switch, Mirrors plate-mounted, manual adjust w/convex, Mudflaps rear, Receptacle AC duplex, Running Boards fiberglass w/front wheel lips, Sidewall Skin 1-piece smooth fiberglass, Storage Compartments valence panel w/trunk liner ⁴
O	O	Awning⁴ patio
O	O	Deluxe Graphics Packages⁴ w/box-awning Granite Metallic or Light Bronzest Metallic w/ full-body paint silver cab, running boards w/wheel lips (23D requires 14,050 GVWR Chassis)
O	O	Entrance Door Step single electric w/doorjamb switch
O	O	Mirrors⁴ plate-mounted, electric remote w/defroster

23D	26A	Systems
S	S	Automotive Heater/Air Conditioner blend air system, A/C roof mount prep, A/C (Roof) 10,500 BTU, ceiling-ducted w/wall thermostat, Auxiliary Start Circuit , Battery (Coach) group 24 deep-cycle, Battery (Coach) disconnect system, Battery Charge Control automatic dual, Drain water tank, Electrical Distribution System AC & DC breaker panels, 45-amp. converter/charger, Generator Prep Kit , Monitor Panel battery condition gauge, generator hourmeter gauge, generator start/stop switch, holding tank levels, LP tank level, water heater light(s), water heater switch, water pump switch, water tank level, Power Cord 30-amp. 25', Service Compartment (Drainage/Water) city water hookup/tank diverter fill, drainage valves, exterior wash station w/pump switch, 10' sewer hose, Service Center (Electrical) cable input, power cord, portable satellite dish hookup, Tank holding, heated compartment (26A only), Tank LP, permanent mount w/gauge, TROUBLELEVEL holding tank monitoring system, Water Heater 6-gallon electronic ignition, LP gas, Water Pump demand, Water System Drain , Water System Winterization Package water heater bypass valve & siphon tube, Water Tank Fill gravity w/locking door
O	O	A/C Heat Pump
O	O	Batteries (Coach) (2) group 24 deep-cycle
O		Drainage System heated, electric
O	O	Exterior Wash Station w/lighted pump switch
S		Furnace 25,000 BTU, low-profile
	S	Furnace 30,000 BTU, low-profile
O	O	Generator 4,000-watt Onan® MicroQuiet™, gas
O	O	Inverter DC/AC, 300-watt

23D	26A	Slideouts
S		Slideout Room dinette/storage cabinet w/slidoor cover
	S	Slideout Room dinette w/slidoor cover

23D	26A	Safety
S	S	Airbags driver & passenger, Assist Bar interior, Assist Handle exterior, Bumpers front & rear, Detectors/Alarms LP leak, smoke, carbon monoxide, Fire Extinguisher 10 B.C., Ground Fault Interrupter , Lights high-mount brake lamps, Seat Belts cab, 3-point, Seat Belts lap (in selected areas), Window escape (NA 23D)

23D	26A	Warranty ⁶
S	S	12-month/15,000-mile basic warranty⁷ , 36-month/36,000-mile warranty on structure⁷ , 10-year limited parts & labor warranty on roof skin⁷

- 1
- The height of each model is measured to the top of the tallest standard feature and is based on the curb weight of a typically equipped unit. The actual height of your vehicle may vary by several inches depending on chassis or equipment variations. Please check with your dealer for further information.
- 2
- Actual towing capacity is dependent on your particular loading and towing circumstances which includes the GVWR, GAWR and GCWR as well as adequate trailer brakes. Please refer to the Operator's Manual of your vehicle for further towing information.
- 3
- The load capacity of your motor home is designated by weight, not by volume, so you cannot necessarily use all available space when loading your motor home.
- 4
- Not all items available in combination. See dealer for details.
- 5
- Capacities shown are tank manufacturer's listed water capacity (W.C.). Actual filled LP capacity is 80% of listing due to overfilling prevention device on tank.
- 6
- See separate chassis warranty details provided in owner's manual.
- 7
- See your dealer for complete warranty information.
- 8
- Capacities are based on measurements prior to tank installation. Slight capacity variations can result due to installation applications.

S Standard
O Optional

Winnebago Industries® continuing program of product improvement makes specifications, equipment, model availability and prices subject to change without notice. Comparisons to other motor homes are based on the most recent information available.



Not all motor homes are created equal. SuperStructure® is the term given to Winnebago Industries' structural motor home design and construction. Rather than a single component, it is the culmination of design integration that incorporates steel and aluminum sub-structures, welded tubular steel floor supports, interlocking joint technology and Thermo-Panel® floor, roof and sidewalls to form an incredibly strong, durable vehicle body.

A Tubular steel floor supports

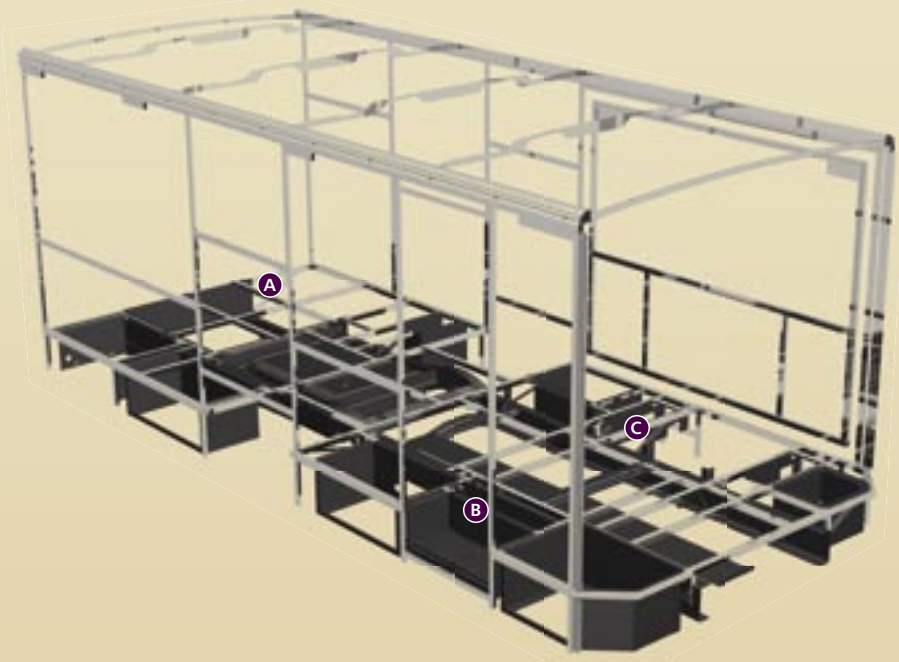
provide a stable base for the floor structure and storage compartments.

B Critical steel components

are treated using an advanced electrodeposition coating process that provides superior corrosion protection.

C The foundation substructure

assembly is precision-aligned to maximize strength and cross-coach support as well as durability.



Interlocking joint construction utilizes advanced aluminum structural components to create integrated floor-to-sidewall and sidewall-to-roof joints. This design effectively distributes the weight of the walls and roof, making a stronger and more durable body than competitor designs that require screws to carry the weight.

We invented Thermo-Panel® sidewall construction and, over the years, have perfected this innovative composite construction process. It combines an exterior fiberglass panel, high-density block foam insulation and welded aluminum support structures to create some of the strongest, most durable and lightweight sidewalls in the industry.

Built to a higher standard. The Cambria features a crowned, one-piece fiberglass roof, backed with a 10-year limited parts-and-labor roof skin warranty. Fiberglass offers superior strength, attractiveness and durability over the rubber roofs found on many competitive models which can chalk, streak and degrade over time. Fiberglass also provides increased puncture and tear resistance.



1-year-old Itasca fiberglass roof



1-year-old competitor's rubber roof



Committed to service. We back our motor homes with the industry's best service after the sale.

- 12-month/15,000-mile basic limited warranty
- 36-month/36,000-mile warranty on structure
- Standard 10-year limited parts-and-labor roof skin warranty
- Complimentary 24-hour roadside assistance program
- TripSaver Fast Track Parts. TripSaver guarantees that in-stock warranty parts ship directly to your dealer within 24 hours.
- National dealer service network



Recognized quality. Recreation Vehicle Dealer Association members annually rate RV manufacturers on the quality of their products, and sales and service support. Winnebago Industries has achieved the coveted Quality Circle award every year since its inception, the only RV manufacturer to do so.



WARNING: Joining WIT has been known to cause excessive fun. Winnebago-Itasca Travelers (WIT) is a club for owners of Winnebago Industries motor homes. WIT is a great way to meet people and offers you:

- Caravans and rallies
- Local and state group activities
- RV travel benefits

winnebagoind.com
NYSE listing: WGO

For Sales and Service Information Contact:



©2004 Winnebago Industries, Inc.



Printed in USA

Seat belts are your most important hookup. Always buckle up.