

XLR THUNDERBOLT FIFTH WHEELS



A division of Forest River Inc.,  
a Berkshire Hathaway company





## **XLR THUNDERBOLT BOLD, STYLIZED LUXURY LIVING**

Sleek and enticing, XLR Thunderbolt toy haulers raise the standard for luxury living. Built for full-time use, Thunderbolt's style is bold and uncompromising. Floorplans are carefully planned to create cohesive living spaces that lead the eye from room-to-room. Rich Cognac Maple curved hardwood wall panels, plush contemporary upholstery, Corian® countertops and custom cabinetry create a warm, inviting ambience.





**395AMP** This ample bathroom has an exclusive tiger stripe Corian® countertop and boasts one of the largest vanities in the industry, complete with a generous medicine cabinet. Blue shower mood lighting looks cool.

**395AMP** This spacious master suite features his and her wardrobes, a computer workstation, a lift-up vanity, a built-in dresser with deep drawers, plenty of walk around bed space and a full, floor-to-ceiling entertainment center (not shown).



**395AMP** Thunderbolt's interior styling sets the stage for a good time with exclusive tiger stripe Corian® countertops, an ultra-deep 60/40 stainless steel sink with high-rise gooseneck faucet, a quad door 12 cu. ft. refrigerator, contemporary pendant lighting and a spacious pantry.



## **XLR THUNDERBOLT** **DRESSED TO THRILL**

Distinctively bold styling sets XLR Thunderbolt apart. Thunderbolt's contemporary floorplans offer outstanding storage capacity, residential style galleys, spacious living areas, name brand amenities and private sleeping quarters.



Standard graphics shown in Havoc Red



# KLAR

## THUNDERBOLT

### FIFTH WHEELS



**380AMP** This kitchen is surrounded with abundant storage, both above and below. Premium LED pendant lights complement the attractive tiger stripe Corian® countertop. Cook up something amazing with the three burner cooktop and oven. Standard reclining theater seats are a great place to relax while watching a favorite show.

**380AMP** The living room comes complete with an LCD HDTV and electric fireplace. Listen to your favorite playlist by syncing your smart phone or iPod with the bluetooth touch screen audio system.



Full body  
paint shown  
in Black Pearl

**380AMP** All Thunderbolt living rooms feature a flush floor hydraulic slide out, panoramic windows, LED lighting, designer accent walls and decorator window treatments. Seat extensions on each end of the party dinette convert to lounge style seating. Hidden storage under the cushions keeps living space tidy.





**380AMP** Thunderbolt bedroom suites are the ultimate in comfort and convenience. Mirrored french doors open to reveal this front walk-in closet with ample hanger space and abundant shelving. The plushly upholstered walk-around queen bed with pillow top mattress and storage underneath comes with decorator pillows and bolster. Tall ceilings and cross-ventilation windows add headroom and fresh air to an already sumptuous living space. There's even a vanity with huge, deep drawers across from the bed (not shown).

## **XLR THUNDERBOLT** **BIG ON LUXURY**

After a day of playing hard, rich deep earth tones and vibrant accents with contemporary styling create a warm, welcome feeling that sets this stylish RV apart from the rest.



**380AMP** This roomy bathroom is all about comfort. Features include a large spacious triple pane shower, conveniently located towel storage, and plenty of vanity space for necessities.



**380AMP** A residential door separates living areas. The standard upper loft bed is perfect place for kids to sleep or a convenient place to store extra gear.





**300X12** No need to sacrifice comfort and luxury. This compact model features a private bedroom, plush, comfortable living spaces with Corian® countertops, and a well positioned LCD HDTV in the living room opposite the party dinette.



**300X12** Gather together and enjoy the view. The spacious U-shaped party dinette has slide out extended seating on both ends. This inviting kitchen has rich Cognac Maple cabinets, paneling, loads of storage, and a 22" oven with 3-burner cooktop. Need more room? The versatile garage accommodates guests, gear and good times.

**300X12** Thunderbolt bedrooms are the perfect place to unwind after an eventful day. Rich, deep earth tones, vibrant accents, a walk around bed, nightstands, a sizable wardrobe and contemporary styling create a personal oasis.







*A Bluetooth, touch-screen audio system syncs with your smart phones and iPod*



*Three-burner stove top with a 22" oven*

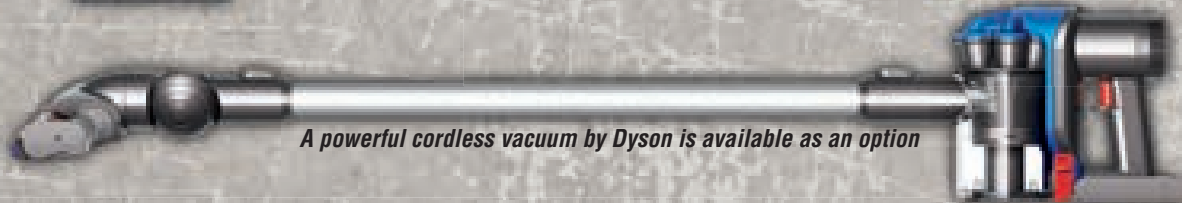


*Cool, long-lasting LED pendant lighting completes the decor*

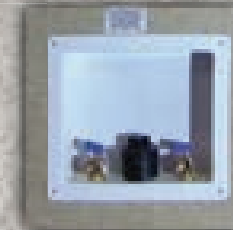


*5,000 lb flush-mounted D-rings are standard in both the garage area and pass-through storage compartment*

## **XLR THUNDERBOLT LOADED WITH FEATURES**



*A powerful cordless vacuum by Dyson is available as an option*



*Washer/Dryer prep is in the garage instead of the bedroom closet for better access*

*Thunderbolt's Kegerator keeps beer fresh so the party can go on and on*

## **EXTERIOR GRAPHICS OPTIONS**

### **STANDARD - HAVOC RED**



### **OPTIONAL - TREMOR BRONZE**



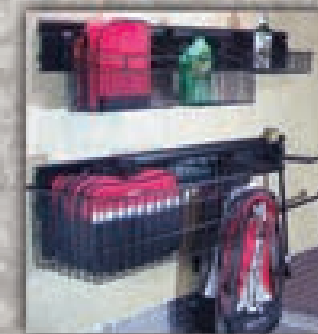
### **HAVOC RED - PARTIAL PAINT**



### **ROCKSTAR RED - FULL BODY PAINT**



### **BLACK PEARL - FULL BODY PAINT**



*Optional garage organizer*



*Frameless windows*





*A recessed, dove-tail storage compartment is standard in the AMP*



*The Bitchin Outdoor Kitchen™ Includes: a Weber® grill, refrigerator, stainless steel sink with hot and cold water hook-ups, 5 gallon gray tank, 2 tier bar top, all weather ready!*



*Take the party outside, while keeping everyone together. This VIP party deck extends useful living space while keeping the gang together.*



*Rockstar entertainment center moves with the party*



*Thunderbolt's six-point hydraulic auto Level Up system is available as an option*



*Thunderbolt comes standard with a front hydraulic leveling system*

**HD SUNSET - FULL BODY PAINT**



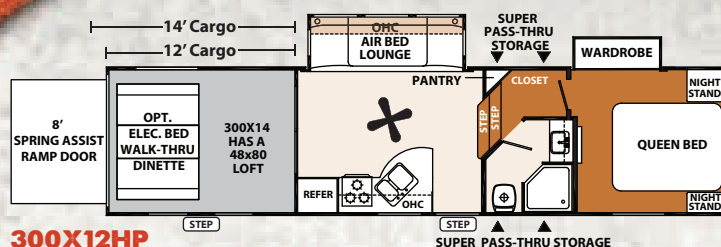
**VICTORY RED - FULL BODY PAINT**



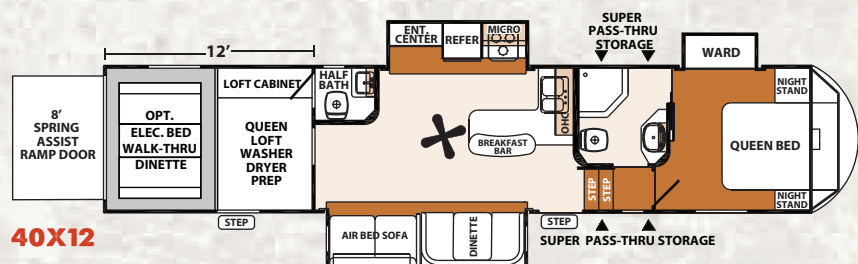
**COBALT BLUE - FULL BODY PAINT**



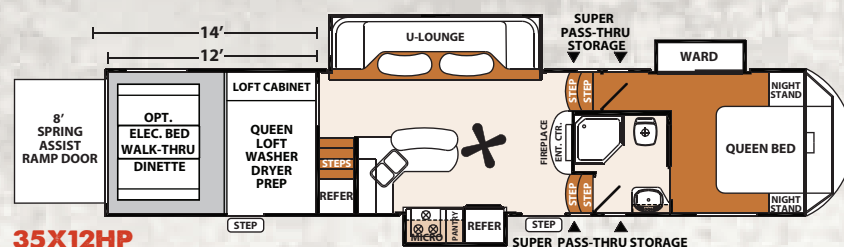
## 2013 XLR THUNDERBOLT FLOORPLANS



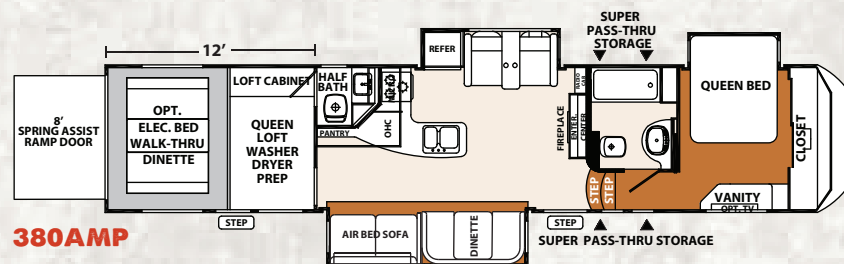
**300X12HP  
300X14HP**



**40X12**



**35X12HP  
35X14**



**380AMP**

## 2013 XLR THUNDERBOLT FEATURES

### INTERIOR STANDARDS

- Professionally Designed Interiors
- Upgraded Waterfall Corian® Countertops
- Crown Molding Throughout
- Night Shades
- Ceiling Fan (Select models)
- Attic Ventilation System
- Residential Large Microwave
- Stainless Steel Deep Bowl Kitchen Sink
- 7'6" Slide Room Height (AMP Series only)
- Living Room LCD HDTV
- Multi Zone Entertainment
- 15K BTU Air Conditioner
- 162 Gallons Fresh Water (AMP Series only)
- Bathroom Fantastic Fan
- LED Shower Light
- 12 Gallon Gas/Electric/DSI Water Heater

- Washer/Dryer Prep in Cargo Area
- Retractable Hid-N-Screen Wall
- Temperature Controlled Garage (Select Models)
- Dovetail Storage Box (AMP Series Only)
- High Profile Cap (N/A 35X14)
- Touch Screen Stereo System with USB, Bluetooth, MP3, DVD iPhone and Android Operating System
- 5/8" Tongue and Groove Plywood Floor
- Custom Hardwood Cognac Maple Cabinetry with Raised Panels

### EXTERIOR STANDARDS

- Front Hydraulic Landing Gear
- Vacuum-Bonded Aluminum Framed Construction
- High Gloss Gel Coat Sidewalls
- Gel Coat Radius Front Cap with LED Lights

- Exterior LED Brake Lights and Marker Lights
- 6,000 lb. Ultra-Lube Axles
- Tri Tone Metal Skirting
- 16" Gun Metal Panther Aluminum Wheels/Nitro Filled Tires
- 50 AMP Service
- 100 AMP Converter
- Exclusive Hitch Pin Cover
- 5,000 lb. Flush Mount Steel Reinforced Tie Downs
- Generator Ready with Fuel Tank – 18 Gal.
- Ultra View Frameless Windows
- Electric Awning with LED Lights
- Strut Assisted Entry Doors
- Slam Latch Baggage Doors
- Premium Ramp Door
- Compression Keyed Locks
- Bolted to Frame Fuel Tanks
- Collapsible Exterior Ladder
- Large Assist Handles on all Entry Doors

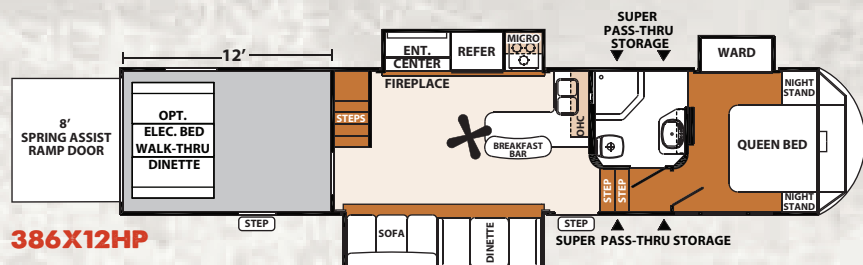
- Reverse Activated Rear Flood Lights
- Hydraulic Flush-Floor Slide (Main Slide)
- Black Laminated Slide-Out End Walls
- Satellite HD Ready Prewire
- Hot/Cold Outside Shower
- Enclosed Termination Valves
- Triple 30# LP Tanks (AMP Series Only)

### OPTIONAL EQUIPMENT

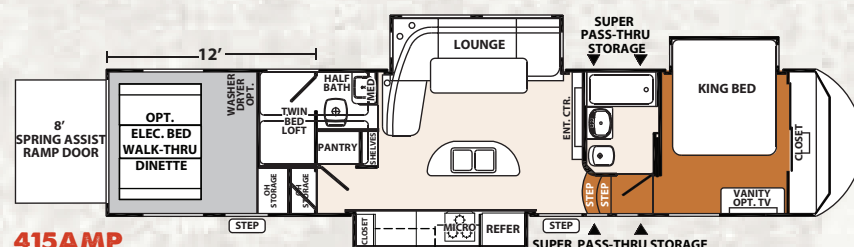
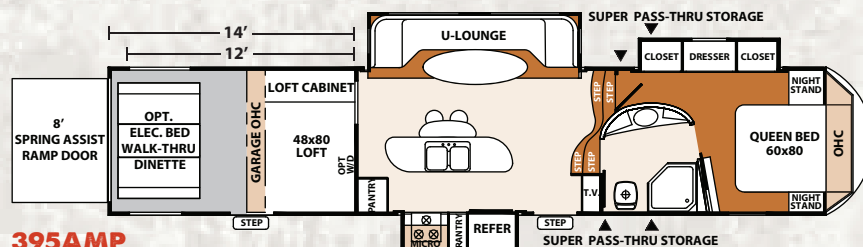
- **Extreme Weather Package** – Dual Pane Windows, 12V Heated Holding Tanks, and Radiant Roof/Floor/Slide Out Floor Insulation (R-38 @ 80° F Radiant Technology)
- **The Bitchin Outdoor Kitchen** – Weber Grill, Refrigerator, Stainless Steel Sink with Hot and Cold Water Hook-ups, 5 Gallon Gray Tank, 2-Tier Bar Top, All Weather Ready!

- **Rockstar Entertainment Center** – 32" LCD TV, Kicker 300W Amp, (2) 10" Subwoofers and (4) Speakers, AM/FM/CD/MP3/DVD Stereo, External 110V, HDMI, Gaming Connections and TV/Cable/Satellite Hook-Up
- 5.5 Onan CARB EVAP Generator
- Mobile Fuel Station with Fuel Tank (30 gallon)
- Frame Mounted Toy Lock
- Party Dinette IPO Booth/Sofa
- Free Standing Table and Chairs
- Theater Seating IPO Sofa
- Second Air Conditioner – Bedroom
- Dyson Digital Slim Cordless Vacuum
- Bedroom TV with Exterior Bracket
- 8 Function Wireless Remote with Touch Screen Control
- Wireless Back-Up Security Camera

# XLR THUNDERBOLT FIFTH WHEELS



**OPTIONS NOT AVAILABLE ON  
300X12HP, 300X14HP, 415AMP**



## XLR THUNDERBOLT FIFTH WHEEL SPECIFICATIONS

Model	Hitch Weight	Ship Weight	GVWR	Cargo Capacity	Exterior Length	Exterior Height	Exterior Width	Fresh Water	Gray Water	Black Water	Awning Size
300X12HP	1858	10454	13858	3404	38' 0"	13' 2"	102	100	64	32	18
300X14HP	2410	11389	18000	6611	41' 0"	13' 2"	102	100	64	32	18
35X12HP	2094	13001	18000	4999	39' 11"	13' 2"	102	100	86	32	18
35X14	2452	12987	18000	5013	41' 11"	13' 2"	102	100	86	32	14
380AMP	2323	13475	18000	4525	42' 3"	13' 2"	102	162	54	108	13
386X12HP	2435	13028	18000	4972	42' 4"	13' 2"	102	100	54	54	18
395AMP	2647	14236	18000	3764	42' 2"	13' 2"	102	162	130	54	18
395AMP12	3174	13811	18000	4189	40' 2"	13' 2"	102	162	130	54	18
415AMP	2331	13719	18000	4281	42' 1"	13' 2"	102	TBA	TBA	TBA	TBA
40X12HP	2383	12447	18000	5553	41' 9"	13' 2"	102	100	54	108	18

Actual towing capacity is dependent on your particular loading and towing circumstances, which includes GVWR, GAWR and GCWR, as well as adequate trailer brakes. Please refer to the Owners Manual of your vehicle for further information. All illustrations and specifications contained in this literature are based on the latest product information at the time of publication. Forest River, Inc. reserves the right to make changes in prices, colors, materials, equipment and specifications at anytime, without notice, and assumes no responsibility for any error in this literature. All units are shipped F.O.B. point of manufacture. ©2013 Forest River, Inc. XLR 3/13

## DECOR



- Kegerator
- Removable Cargo Carpet Kit
- VIP Party Deck (Available with or without manual awnings)
- Electric Bed with Pass-Through Dinette
- Cargo Shower Upgrade (40X12, 415AMP)
- Outside TV Hook-Up
- Overhead Storage IPO Loft
- Hydraulic Auto Level Up System
- Second Power Awning
- X-Tended Living/Recreation Package – Three Season Patio Door IPO Hid-N-Screen, 26" Fireplace with Mantle, LCD TV Hook-up, Plush Surged Carpet
- Comfort Sleep – Gel Memory Form Mattress



# XLR THUNDERBOLT FIFTH WHEELS

## WHY XLR THUNDERBOLT?

Thunderbolt toy haulers are bold, luxurious and loaded for adventure. Floorplans are carefully planned to create plush, well appointed, living spaces that flow from room-to-room with contemporary appeal. With double and triple slide-outs, 12' and 14' garages, and a 102" widebody design with vacuum bonded aluminum construction, the choice of rock-solid configurations is up to you.



**386X12**

*with Havoc Red partial paint*

### FOREST RIVER

2431 E. Kercher Road ■ Goshen, IN 46526

E-mail: [XLRinfo@forestriverinc.com](mailto:XLRinfo@forestriverinc.com)

Phone: 574-975-0279 ■ Fax: 574-343-5909

[www.forestriverinc.com/XLR](http://www.forestriverinc.com/XLR)

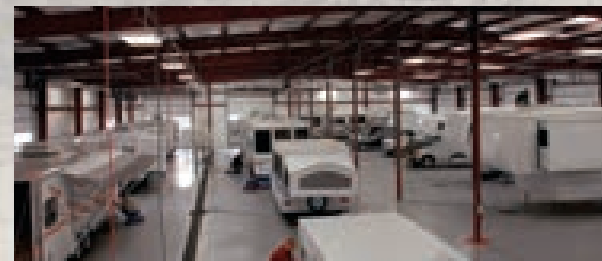
[www.forestriveraccessories.com](http://www.forestriveraccessories.com)

CHECK US OUT ON: 

**395AMP**

*with Havoc Red graphics*

**YOUR XLR THUNDERBOLT DEALER**



### PRE-DELIVERY INSPECTION FACILITY

20,000 square feet of quality assurance. The bare essentials for a premium product. This state-of-the-art facility gives immediate daily feedback to production for quality assurance in every unit built.



Forest River, Inc. encourages our customers to purchase their Forest River products from a local dealership whenever possible for the following reasons:

- 1) Forest River, Inc. dealers are independently owned and operated businesses so priority service and scheduling is at their discretion and is often provided to customers that purchased their unit at that dealership.
- 2) Purchasing locally allows customers to establish meaningful relationships with a dealer, enhancing the RV experience through assistance with product questions, user tips or RV regulations for your state or country, and much more!
- 3) Canadian customers must meet requirements to bring an RV purchased out of the country to their home. These requirements may involve additional inspections and certifications, taxes and fees. Your local Canadian Dealer is a professional at meeting these requirements.
- 4) Scheduling timely warranty repairs and adjustments through a local dealership provides far greater flexibility and convenience to you, the customer!

It is the goal of Forest River, Inc. that all of our RV owners fully enjoy the RV experience and that customer satisfaction meets or exceeds their expectations!

### 24/7 EMERGENCY ROADSIDE ASSISTANCE

For a worry-free ownership experience

Forest River includes one

year of Coach-Net RV Technical & Roadside Assistance with each RV purchase. Whether new to the RV lifestyle or an experienced RV enthusiast, Forest River owners have 24/7 access to technical, operational and emergency road service coverage throughout the US & Canada. Coach-Net's fast, dependable service is just a phone call away.

**Coach-Net®**

RV Technical & Roadside Assistance



Learn More  
Scan this barcode using a QR Reader on your smart phone to learn more about Forest River.



A Berkshire Hathaway company.