


20 *Impulse*® 09



Make it Happen

Follow your impulses and get away. For a day. For a weekend. For as long as it takes. Escape the everyday and follow your whims. Next time you get the urge to escape, make sure you have the means to make it happen: The 2009 *Itasca Impulse*.

The  **ITASCA** *Difference* ITASCA MOTOR HOMES ARE BUILT ON AN EXCLUSIVE SUPERSTRUCTURE FOUNDATION TO CREATE SOME OF THE INDUSTRY'S STRONGEST, MOST DURABLE MOTOR HOMES. QUALITY COMPONENTS, A 50-YEAR HISTORY OF INNOVATION AND ATTENTION TO DETAIL ALL GO INTO MAKING ITASCA MOTOR HOMES THE BEST IN THE BUSINESS.





Take *your choice*

The Itasca Impulse fits the way you travel, giving you the choice of an overhead bunk or an available front entertainment center with a 32" LCD TV. A 19" LCD TV with DVD player can be added to the bunk area. Choose the front entertainment center and you can enhance it with a home theater system that includes a DVD player and 5.1 surround sound. Both TVs include a video selection system that allows DVDs to be shown on the available bedroom TV.

The kitchen is loaded with at-home features including a microwave oven, range top and an available oven to meet your cooking needs. Sink and range covers from the available interior upgrade package help provide ample countertop space. Serve dinner in the dinette, which has extra storage and converts into a comfortable bed.

All Impulse models offer the comfort and privacy of a bedroom with a queen-size bed. The bathroom features a shower screen that self cleans as it retracts (NA 31N).





titanium TOUCH[™]
STAINLESS
 SMARTSPACE[™]

Now *is the time*

If you've ever had the urge to travel on your own terms, the Itasca Impulse is the perfect place to begin. It's loaded with great features and user-friendly SmartSpace[™] amenities all in a fun-to-drive package at a very welcoming price. Choose from four models, including the double-slideout 31N, which offers a sofa and a dinette that converts into a sleeping space. You can also add an interior upgrade package for stylish touches such as Titanium Touch[™] stainless refrigerator doors, glass cabinet door inserts and a kitchen backsplash. All this, plus your choice of a Ford[®] or Chevy[®] chassis with a surprising amount of storage, makes it easy to go with the 2009 Itasca Impulse.





Exterior *Graphics*

Upgrade from the standard graphics to one of the deluxe graphics packages to help you stand out from the crowd. Add stainless steel wheel liners for even more curb appeal.

Standard Graphics



*Khaki/Light Gold Metallic/
Dark Tundra/Crystal Green*

Deluxe Graphics



Shoreline Mist Metallic

Deluxe Graphics



Cadet Blue Metallic

Interior *Decor*

Your choice from three fabric collections makes it easy to find an Impulse that suits your style. Sierra Maple cabinetry comes with satin nickel hardware for a warm, inviting interior.

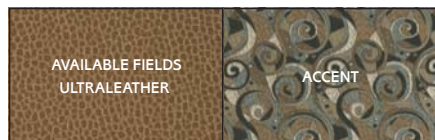
Sierra Maple



Cloudburst



MAIN



AVAILABLE FIELDS
ULTRALEATHER

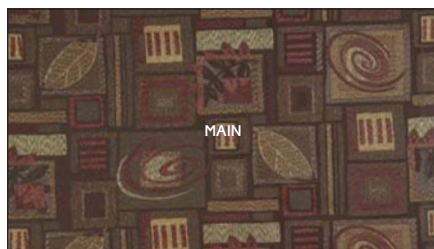
ACCENT



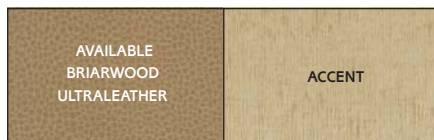
BEDSPREAD

CARPET

Warm Glow



MAIN



AVAILABLE
BRIARWOOD
ULTRALEATHER

ACCENT



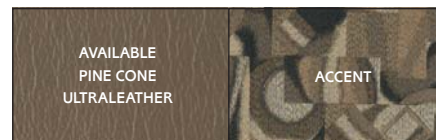
BEDSPREAD

CARPET

Nutmeg

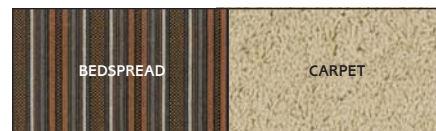


MAIN



AVAILABLE
PINE CONE
ULTRALEATHER

ACCENT



BEDSPREAD

CARPET



The only manufacturer to receive the RVDA Quality Circle Award for exceptional products, service and support for 11 consecutive years.



Travel *on your terms*

Go ahead and bring an extra chair or two. High-density rotocast compartments and the large rear storage trunk on the 29T and 31C provide plenty of room for your larger items. Impulse available upgrades include power mirrors, heated holding tanks for cold-weather camping and a patio awning. You'll have all the power you need from an available 4,000-watt Cummins Onan® MicroQuiet™ generator and the new longer-reserve Group 31 RV batteries with up to 44% more amp.-hours for 2009. An exterior upgrade package is also available, which includes a rear ladder, rubber-tread stepwell, painted running boards and storage compartment covers in the rear storage area. The Impulse even makes seasonal storage easy with a water system winterization package.

Smart Storage A large rear trunk on the 29T and 31C with side access has room for large items. The rear compartment cover can be removed quickly and used as a picnic table when you order the exterior upgrade package. It's a perfect place to set your drink while you watch the available LCD TV, which can be taken from the bedroom and hung on the exterior mount (NA 24V).

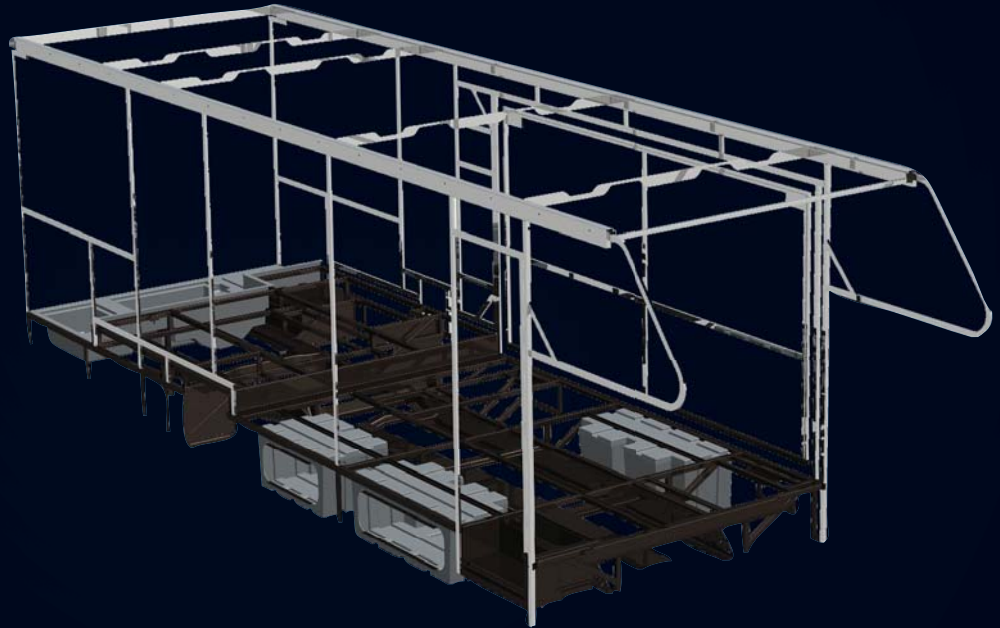


Innovation A recessed storage compartment includes a drain plug that allows you to keep drinks on ice (29T and 31C only). The TrueLevel™ holding tank monitoring system uses sonar technology to read liquid levels from outside the tank. There are no probes to corrode or clog, just accurate readings time after time.



SuperStructure. Legendary strength and durability are the results of the Super-Structure construction that goes into every Itasca motor home. It's a combination of quality, proprietary components and careful attention to detail that makes Itasca motor homes the cream of the crop.

- Patented Thermo-Panel™ sidewalls are some of the most durable and lightweight in the industry
- Specially engineered interlocking joints connect the floor, sidewalls and roof together for improved strength and durability
- An automotive-style dip tank applies an advanced electrodeposition coating to protect critical steel components
- The crowned, one-piece fiberglass roof is backed by a 10-year limited parts-and-labor roof skin warranty



Committed to Service WE BACK OUR MOTOR HOMES WITH THE INDUSTRY'S BEST SERVICE AFTER THE SALE.

- 12-month/15,000-mile basic limited warranty
- 36-month/36,000-mile warranty on structure
- Standard 10-year limited parts-and-labor roof skin warranty
- Complimentary 24-hour roadside assistance program
 - RV Technical Assistance Hotline
 - RV Service Appointment Assistance
 - Emergency Trip Interruption
 - Emergency Message Service
 - Nationwide Trip Routing
 - Fee-Free Travelers Cheques

Weights & Measures

	24V	29T	31C	31N
Length	25' ^A /25' ^B /25' ⁵ ^C	30' ⁵ ^B /30' ¹⁰ ^C	31' ⁸ ^B /32' ¹ ^C	31' ⁶ ^B
Exterior Height ¹	10'11"	10'11"	10'11"	10'11"
Exterior Width ²	8'5"	8'5"	8'5"	8'5"
Exterior Storage ³ w/slideout (cu. ft.)	NA	80.3	79.6	28
Exterior Storage ³ w/o slideout (cu. ft.)	41.3	72.2	NA	NA
Awning Length	11'6"	14'	16'	16'
Interior Height	6'8"	6'10" ^{**}	6'10" ^{**}	6'10" ^{**}
Interior Width	8'0"	8'0"	8'0"	8'0"
Freshwater Capacity w/Heater ⁴ (gal.)	42	42	42	34
Holding Tank Capacity ⁴ - Black/Gray (gal.)	39/29	41/41	41/41	47/45
LP Capacity ⁵ (gal.)	18	18	18	18
Fuel Capacity (gal.)	55	55	55	55
GCWR ⁶ (lbs.)	18,500 ^A /20,000 ^B /17,600 ^C	20,000 ^B /17,600 ^C	20,000 ^B /17,600 ^C	20,000 ^B
GVWR (lbs.)	11,500 ^A /14,500 ^B /14,050 ^C	14,500 ^B /14,050 ^C	14,500 ^B /14,050 ^C	14,500 ^B
GAWR - Front (lbs.)	4,600 ^A /5,000 ^B /4,600 ^C	5,000 ^B /4,600 ^C	5,000 ^B /4,600 ^C	5,000 ^B
GAWR - Rear (lbs.)	7,800 ^A /9,500 ^B /9,450 ^C	9,500 ^B /9,450 ^C	9,500 ^B /9,450 ^C	9,500 ^B
Wheelbase	158" ^A /158" ^B /159" ^C	190" ^B /191" ^C	220" ^B /221" ^C	215" ^B

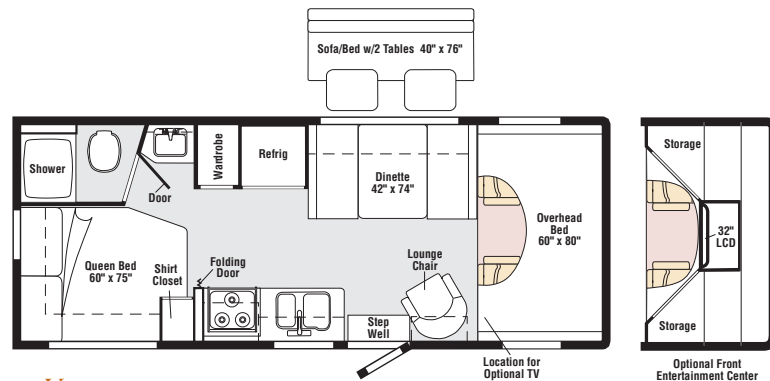
2009 Impulse *Floorplans & Specifications*

Dimensions shown are for sleeping space only and may vary due to styling differences. Dashed lines denote overhead storage areas. Floorplans and specifications are also available online at: goitasca.com

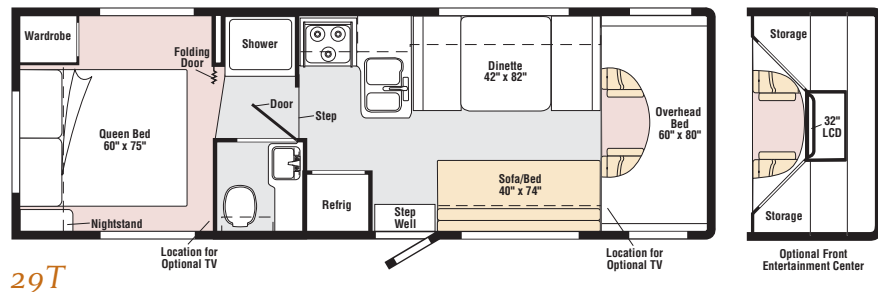
Optional
UltraLeather

Carpet

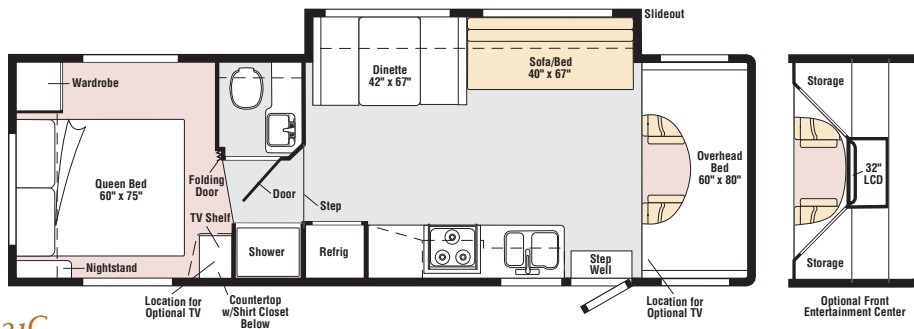
Vinyl



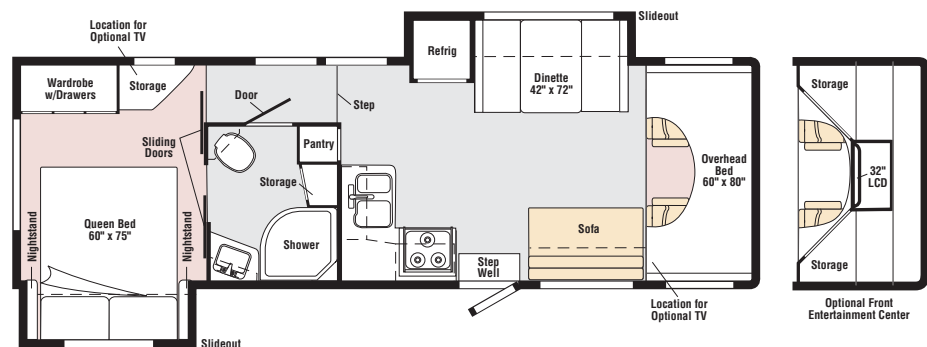
24V



29T



31C



31N
new

Chassis

Ford® E350 chassis (24V) <ul style="list-style-type: none">• 255-hp 5.4L Super-Duty V8 SEFI engine• TorqShift™ 5-speed automatic transmission• 115-amp. alternator			
Ford E450 chassis (29T, 31C & 31N) <ul style="list-style-type: none">• 305-hp 6.8L Super-Duty V10 SEFI engine• TorqShift 5-speed automatic transmission• 115-amp. alternator			
4-wheel ABS			
Trailer Hitch ⁶: 5,000-lb. drawbar/350 lbs. maximum vertical tongue weight and wiring (Ford chassis)			
Trailer Hitch ⁶: 3,500-lb. drawbar/350 lbs. maximum vertical tongue weight and wiring (Chevy chassis)			
7-pin trailer wiring			
Stainless steel wheel covers			
24V	29T	31C	31N
o			
Optional Equipment			
Ford E450 chassis <ul style="list-style-type: none">• 305-hp 6.8L Super-Duty V10 SEFI engine• TorqShift 5-speed automatic transmission• 115-amp. alternator			
o	o	o	
Chevrolet® chassis <ul style="list-style-type: none">• 300-hp 6.0L Vortec™ V8 engine• 4-speed automatic transmission• Tow/haul mode switch• 145-amp. alternator			
o	o	o	o
Stainless steel wheel liners			

Cab Conveniences

Fabric cab seats w/armrests, lumbar support, multi-adjustable slide/recline			
AM/FM radio/CD player			
Cruise control			
Tilt steering wheel			
Power door locks			
Sunvisors			
24V	29T	31C	31N
o	o	o	o
Optional Equipment			
Rearview monitor system			
o	o	o	o
Power mirrors w/defrost			
o	o	o	o
Dash appliqué s			

Interior

Overhead bunk with foam mattress and ladder			
Privacy curtain			
Satellite system ready			
Pleated blinds			
Systems monitor panel			
Roof vent			
Vinyl floor covering throughout (24V)			
24V	29T	31C	31N
o	o	o	o
Optional Equipment			
Upgrade Package: range backsplash, select overhead cabinet doors w/glass inserts, decorative light in dinette area, picture (24V & 29T), range cover, Titanium Touch™ stainless finish refrigerator door insert, sink covers (2), sofa throw pillows (2)			
o	o	o	o
19" LCD TV w/DVD player and video selection system in front bunk area			
o	o	o	o
Front entertainment center with 32" LCD TV and video selection system			
o	o	o	o
Home theater sound system w/DVD			
o	o	o	o
Carpet in lounge and dining area			
o	o	o	o
Vinyl floorcovering throughout, excludes cab, stepwell and slide-out room			

Kitchen

Laminate countertops			
2-door Norcold® refrigerator/freezer			
Microwave oven			
3-burner range top w/storage below			
Vented range hood			
Mini blinds			
24V	29T	31C	31N
o	o	o	o
Optional Equipment			
3-burner range w/oven			

Bedroom

Queen innerspring mattress			
Pleated blinds			
24V	29T	31C	31N
	o	o	
Optional Equipment			
15" DC LCD TV, removable			
			o
19" DC LCD TV, removable			

Bath

Laminate countertop			
Retractable screen shower door (24V, 29T & 31C)			
Curved, textured glass shower door (31N)			
Flexible showerhead			
Powered roof vent			
Skylight			
Mini blinds			
24V	29T	31C	31N
	o	o	
Optional Equipment			
Textured glass shower door			

Exterior

Manual entrance step			
Rear mud flaps			
Rotocast compartment w/drain plug (29T & 31C)			
24V	29T	31C	31N
o	o	o	o
Optional Equipment			
o	o	o	o
Automatic entrance step			
o	o	o	o
Patio awning			
o	o	o	o
Accessory Package: rubber-tread stepwell, ladder, painted running boards, storage compartment cover (29T & 31C), storage compartment cover/folding leg table (29T & 31C)			

Heating & Cooling System

13,500 BTU roof air conditioner			
25,000 BTU low-profile furnace (24V)			
30,000 BTU low-profile furnace (29T, 31C & 31N)			
24V	29T	31C	31N
	o	o	o
Optional Equipment			
14,800 BTU roof air conditioner			

Electrical System

AC/DC load center, DC fuses, 120V AC circuit breakers, 45-amp. converter/charger			
Automatic dual battery charge control			
Generator prep kit			
25' 30-amp. power cord			
Deep-cycle, Group 31 battery			
Battery disconnect system			
Auxiliary start circuit			

24V	29T	31C	31N	Optional Equipment
o	o	o	o	
				4,000-watt Cummins Onan® MicroQuiet™ gas generator
o	o	o	o	Additional deep-cycle, Group 31 battery

Plumbing System

City water hook-up				
Water tank fill with lockable door				
Water pump				
6-gallon water heater				
Winterization package w/water heater bypass valve & siphon tube				
TrueLevel™ holding tank monitoring system				
Manual dump valve				
Sewer hose				
LP tank				
24V	29T	31C	31N	<i>Optional Equipment</i>
o	o	o	o	
				Heated electric drainage system
o	o	o	o	6-gallon water heater system w/EMS

Safety

Seat belts			
Dual air bags			
Child seat anchor			
LP, smoke and carbon monoxide detectors			
10 BC fire extinguisher			
Ground fault interrupter			
High-mount brake lights			

Warranty⁷

12-month/15,000-mile basic warranty ⁸			
36-month/36,000-mile limited warranty on structure ⁸			
10-year limited parts and labor warranty on roof skin ⁸			

- 1 The height of each model is measured to the top of the tallest standard feature and is based on the curb weight of a typically equipped unit. The actual height of your vehicle may vary by several inches depending on chassis or equipment variations. Please contact your dealer for further information.
- 2 Impulse floorplans feature a wide-body design - over 96" In making your purchase decision, you should be aware that some states restrict access on some or all state roads to 96" in body width. Before making your purchase decision, you should confirm the road usage laws in the states of interest to you.
- 3 The load capacity of your motor home is designated by weight, not by volume, so you cannot necessarily use all available space when loading your motor home.
- 4 Capacities are based on measurements prior to tank installation. Slight capacity variations can result due to installation applications.
- 5 Capacities shown are tank manufacturer's listed water capacity (W.C.). Actual filled LP capacity is 80% of listing due to overfilling prevention device on tank.
- 6 Actual towing capacity is dependent on your particular loading and towing circumstances which includes the GVWR, GAWR, and GCWR as well as adequate trailer brakes. Please refer to the chassis operator's manual of your vehicle for further towing information.
- 7 See separate chassis warranty.
- 8 See your dealer for complete warranty information.
- o Optional
- NA Not Available

Not all items available in combination. See dealer for details.

Winnebago Industries® continuing program of product improvement makes specifications, equipment, model availability, and prices subject to change without notice. Comparisons to other motor homes are based on the most recent information available at printing.

What's on the Web?

Want to see more of the Itasca Impulse? You'll find more pictures, in-depth info, floorplans, and complete specs at goitasca.com. You'll also see videos and highlights of key features, such as:

titanium TOUCH™
STAINLESS

TRUE LEVEL

SMARTSPACE™

SUPER
STRUCTURE

SMART STORAGE™

Built proudly by



goitasca.com

NYSE: WGO



Join the ITASCA Family

ITASCA OWNERS JUST HAVE MORE FUN. WHEN YOU BUY AN IMPULSE, YOU CAN BECOME A PART OF THE WINNEBAGO-ITASCA TRAVELERS CLUB. AS A MEMBER, YOU'LL MEET OTHER MOTOR HOME ENTHUSIASTS, TRAVEL TO INTERESTING PLACES WITH INTERESTING PEOPLE, AND BE THE FIRST TO LEARN ABOUT NEW ITASCA PRODUCTS. SEE WHAT THE WIT CLUB IS ALL ABOUT AT WITCLUB.COM



- ☐ Join the WIT Club
- ☐ Caravans and rallies
- ☐ Local and state activities
- ☐ RV travel and benefits

For Sales and Service Information Contact:

Seat belts are your most important hookup. Always buckle up.