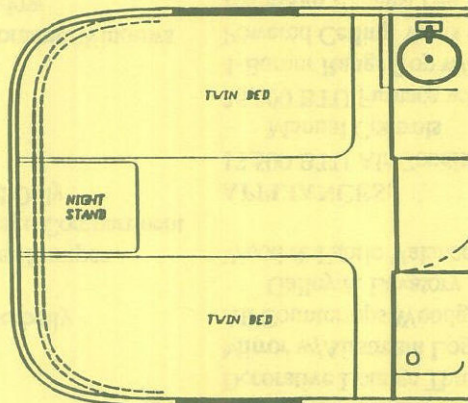
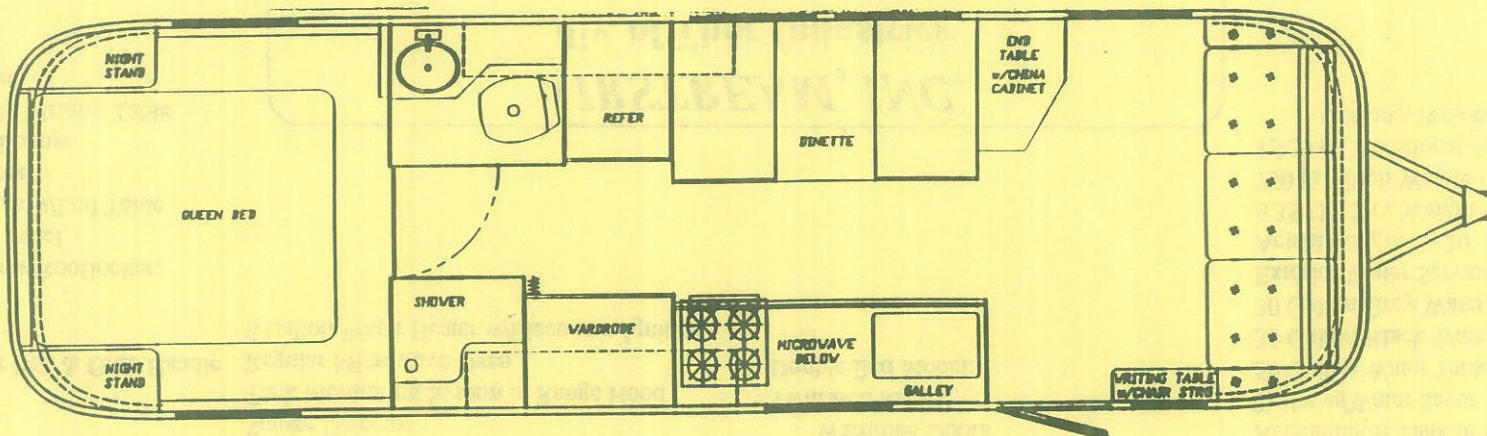


# ALL NEW 30' EXCELLA TRAILER

by: **AIRSTREAM**

10/13/92

## 30' Floorplan:



### SUPER VALUE PACKAGE:

Spare Tire Bracket (994073)	\$ 103
Raised Panel Inserts on Refrigerator (109314)	\$ 109
TV Antenna Cable/Telephone Hook-Up (109132)	\$ 101
Excella "1000" Package (109255-30)	\$ 1,079
C.S. Patio Awning 21'4" (109036)	\$ 1,192
<b>TOTAL OPTION COSTS (999888 29)</b>	<b>\$ 2,584</b>

**SUPER VALUE PACKAGE CREDIT . . . < \$ 1,247 >**

**TOTAL PACKAGE COST \$ 1,337**

**Plus Many More Options!!!**

**AIRSTREAM, INC.** • 419 W. Pike Street • Jackson Center, Ohio 45334 • 513/596-6111



# 1993 AIRSTREAM 30' EXCELLA TRAVEL TRAILER

3/01/93

## CHASSIS:

8,000 lb. Axle System  
Steel Wheels w/Trim Rings  
Radial Black Wall Tires, LRC  
12" Electric Drum Brakes  
Electric Hitch Jack  
Manual Stabilizer Jack w/Pads  
Aluminum Step w/Extension

## EXTERIOR:

Bright Aluminum Finish  
Excella Graphics  
Enclosed & Insulated Underbelly  
C.S. Awning Rail  
Sewer Hose Storage in Rear Bumper  
C.S. Rear Underbelly Storage Compartment  
Rear Trunk Door - "J" Bed Only  
Polished Bumper  
Hinged LPG Bottle Cover

## WINDOWS & DOORS:

S.P. Solar Grey Front Panoramic Windows  
S.P. Solar Grey Door Window  
C.S. & R.S. Rear Access Doors - Twn Only  
R.S. Access Door - Storage Forward Dinette  
Seat  
18" Stack Window  
Keyed Deadbolt w/Door Bell & Grab Handle

## LOUNGE DECOR:

Molded Front End Liner w/Rooflocker,  
w/Radio Close-Out Panel  
76" Front Deluxe Lounge w/End Table  
Wall Pads in Lounge Area  
Blanket Drawer Below Lounge  
Oak Laminate Lift-Up Writing Table  
Zip Dee Chair Storage

## INTERIOR DECOR:

Pull Shades in Galley & Bath  
Full Close-Out Drapes Except Bath & Galley  
Oak Interior w/Raised Panels  
Front & Rear End Liners w/Raised Panel Doors  
Santa Fe Vinyl Interior Skin  
Decorative Bath Vinyl Skin  
Towel Bars  
Gold Frame Shower Door  
Fiberglass Shower  
Decorative Lounge Throw Pillows (2)  
Mirror w/Airstream Logo  
All Countertops Woodgrain Laminate Except  
Galley & Lavatory  
Wood & Fabric Valances, Except Galley

## APPLIANCES:

13,500 BTU Air Conditioner w/Heat Strip &  
Manual Controls  
35,000 BTU Furnace w/Electronic Ignition  
4-Burner Range Top w/Deluxe Door  
Powered Ceiling Vents (2)  
Bathroom Exhaust Fan (12 V)  
8 cu. ft. 2-Way Auto. Refrigerator  
LP Pressure Gauge in Refrigerator Compt..  
Smoke Detector  
Tank Monitoring System in Range Hood  
Regular Microwave Oven  
6 Gallon Water Heater w/Electronic Ignition

## ENTERTAINMENT & SOUND:

Deluxe AM/FM/Cassette Stereo w/4  
Speakers  
Radio Antenna  
TV Antenna w/2 Outlets

## GALLEY DECOR:

Laminated Galley Top w/Back Splash  
2 Shelf Spice Rack  
Galley Flip-Up Shelf  
Convertible Dinette 38 X 72  
Wall Pad at Side Dinette  
Sink Covers (2)  
Double Porcelain Sink  
Range Cover, Flush Mount

## BEDROOM DECOR:

Quilted Bedspreads & Pillow Covers  
Innerspring Mattress  
Bed Pillows (2)  
Throw Pillows (1-Dbl.. & 2-Twin)  
Lift-Up Bed Storage  
TV Shelf  
Cedar Lined Wardrobes  
Hardwood Framed Mirrord Hinged  
Wardrobe Doors  
Twin Bed Model:  
Double Bed Model:

## ELECTRICAL:

Deep Cycle Battery (2)  
7-Way Trailer Plug  
50 Amp Converter w/On-Off Switch  
12 V Circuit Breakers  
120 V Exterior Outlet  
GFI Protection for Bath & Exterior Outlet  
Step Light  
Water Pump Switch in Bath & Galley  
12 V Kill Switch for Batteries  
Prewired for Solar Battery Charger  
Exterior Lighting Package:  
Hitch Light  
Dump Valve Light  
Flood Light  
Exterior Compartment Lights

## SPECIFICATIONS:

30 lb. Steel LPG Bottles  
Automatic 2-Stage Regulator  
Shower Head w/Shut-Off  
Water Heater By-Pass Kit  
Galley Sink Spray Head  
Lockable Water Fill  
Water Pressure Regulator  
Accumulator Tank in Fresh Water System  
Toilet w/Water Saver  
50 Gallon Water Tank w/Drain Valve  
35 Gallon Black Water Tank w/Tank Flush  
30 Gallon Grey Water Tank  
Exterior Water Service w/Shut-Off  
Actual Length - 30' 11"  
6,350 lb. Dry Weight (Without Options)  
750 lb. Hitch Weight (Without Options)  
1,950 lb. Additional Allowable (Including  
Options, Personal Cargo, & Fluids)

**AIRSTREAM, INC.**  
div. of Thor Industries  
419 W. Pike Street  
Jackson Center, OH 45334  
513-596-6111

Airstream reserves the right to upgrade or  
change these above specifications without  
prior notification.