

Flair[®]

2 0 0 1

FLEETWOOD.RV

ALL DRESSED UP
AND EVERYWHERE
TO GO



PLAY AWAY IN STYLE



Top-of-the-line features blend with space and versatility to create this popular motor home.



Lots of storage with residential style cabinets and the large, double stainless steel sink make preparing meals a pleasure.



Accommodating bathroom makes you feel at home, complete with skylight and decor lighting.



Double-length bedroom slide-out features a huge wardrobe, with six drawers underneath.



The inviting bedroom includes overhead storage, accent lighting, coordinated bed and window fabrics, and convenient nightstands.

A KNACK FOR FUN AND A DESIRE TO PLEASE, Flair® is known for its versatility.

You'll find dishing up your favorite meals a joy. Counter space increases with a cutting block that fits over the large, double stainless steel sink. A folding range cover adds even more counter room and, once opened, reveals a Magic Chef® 16" 3-burner gas range over an oven big enough for a roast. To help keep you supplied with plenty of fresh veggies, there's a 6 cu. ft. or an optional 8 cu. ft. Dometic® double-door refrigerator.

And, in the bedroom, several floor plans (25F, 31A, 32V, and 33R) are made even roomier by optional bed or wardrobe slide-outs. Then enhance the look with a choice of three different interior colors and fabrics. But don't stop there, create a mood with accent lighting and the use of your day/night shades for the exact amount of light you need.

Experience Flair. A motor home with this much going for it makes it hard to stay home.

Magic Chef® is a registered trademark of Maytag • Dometic® is a registered trademark of AB Electrolux.

Flair®

2 0 0 1

FLEETWOOD® RV

GRAB HOLD OF LIFE.

In the Flair® motor home, your family will find an exciting traveling companion for exploring all that life on the road has to offer. It has lots of space, style and solid value that's unsurpassed in its price range.

Agile enough to go where the fun is, the Power Platform II chassis easily carries this wide-body motor home for a quiet, and nearly flawless ride. The steel-truss design also allows for pass-through storage so you can bring along more fun. And you're pre-wired to tow whether you choose a Workhorse® chassis with a 3500 lb. hitch rating or the Ford® with a 5000 lb. hitch rating. Flair has the strength and power to bring along your dirt bikes, ATVs or watercraft.*

You have a selection of seven floor plans. That's a lot. But your choices haven't stopped there. We offer SmartRoom™ options (models 30H and 32V). These transform your bedroom into a den, office, or an additional 30 square feet of floor space to use as a hobby room or a workout area. Beautifully engineered throughout, the flat inner ceiling maximizes Flair's interior headroom, not to mention its practicality, providing space for full-size dishes and personal belongings.

With an RV like this, it's no wonder that Fleetwood RV has so many motor homes on the road today. Flair. Everything's set for your life on the go.



**Check your owner manual(s) for towing safety, rules and guidelines.*

Workhorse® is a registered trademark of Workhorse Custom Chassis • Ford® is a registered trademark of the Ford Motor Company.
SmartRoom™ is a trademark of Fleetwood Enterprises, Inc.

Flair®

FLAIR FEATURES FOR 2001

Our engineering may set us apart from the rest, but the things you'll notice most when you and your family take a trip, are the top-of-the-line features. Here are but a few of the items that make life on the road with Flair memorable.



Convenient passenger-side storage rack holds magazines or books.



Flair's solid wood, spacious passenger overhead storage shelves measure 36" wide and 8" deep.



An optional electronic climate control system, with dual A/C controls, enables a separate climate in the front and rear of the coach.



Every Flair comes prewired for an optional Winegard® satellite dish.



Fill Flair up on either side of the pump with a rear fuel-fill location, especially convenient when towing a vehicle.

Carpeted storage compartments are non-corrosive to prevent rusting.

A coach-length, aluminum drip rail prevents discoloring of the sidewall.

Practical, single die-cast metal paddle latches are flush-mounted for a luggage door system that's durable and easy-to-operate.

Anti-wicking process, on all of Flair's openings and windows, includes multiple seals for prevention of leaks and moisture buildup.

Our swing-down engine access door makes it easy to check Flair's fluid levels and electrical panel.



Flair's standard 4.0kW ultra-quiet Onan® generator provides 110V service and comes with a 3-year warranty. (Optional 5.5 kW generator shown.)



Uniquely suited to your needs on the road, integrated bedroom cabinetry features large dresser, optional TV, hamper and vanity.



Our EZ Store™ Storage System was developed using a rack and pinion system to give you the utmost ease in accessing your stored gear below.

APPLIANCES

- 20" Panasonic® TV in Overhead
- Smoke Detector/Alarm
- LPG Leak Detector/Alarm
- CO Detector/Alarm
- Furnace 35M BTU
- 6-Gallon Quick Recovery Water Heater with D.S.I.
- 16" 3-Burner, High-Output Range with Oven
- Light/Power Range Hood & Monitor Panel
- Folding Range Cover
- Single A/C with Solar Panel
- Water Heater Bypass
- Marine Toilet
- 1-cu. ft. Microwave with Electric Touch Pad
- 6-cu. ft. Dometic® Double-Door Refrigerator
- Single-Lever Galley Faucet
- Demand Water Pump with Filter
- Power Bath Vent
- TV Antenna
- Video Control Box
- Fire Extinguisher
- Rear Speakers in Bedroom
- Telephone Jack in Dash and Bedroom
- 12V Jack

BODY STRUCTURE

- Vacubond Upper/Lower Floor
- Vacubond Walls with Smooth Exterior Fiberglass
- Radiused Roof with Ducted A/C & Flat Interior
- Rubber Roof
- Steel Floor/Wall/Ceiling Framing

ELECTRICAL

- Patio Receptacle in Luggage Compartment
- 120V/12V AC/DC Converter Central Electrical Panel with Charger
- Water Pump Switch
- 4.0kW Onan® Generator
- 30-amp Service
- Dual 6V/Deep-Cycle 218 amp House Batteries
- VCR Ready
- Rear TV Receptacle

EXTERIOR

- Fiberglass Front Cap
- Swing-Down Engine Access Door

EXTERIOR (CONT.)

- Fiberglass Front Grille
- ABS Front/Rear Wheel Well Trim
- Entry Door with Deadbolt Latch
- Slider Windows Throughout
- Flair Logo Badging
- 4-Point Manual Hydraulic Levelers (On Slide-Out Models)
- Roof Ladder
- Exterior Assist Handle
- Exterior Rear View Mirrors
- 20' Sewer Hose
- TV Antenna
- Park Cable Receptacle
- Awning Rail/Drip Molding (Both Sides)
- Power Entry Step
- Exterior Shower
- Porch Light
- 3 Colorway Graphics to Match Decor

EXTERIOR AUTOMOTIVE

- Tinted Windshield
- Undercoating
- Stainless Steel Wheel Simulators
- Valve Extenders
- Steel Surface on Bulkhead
- Trailer Hitch with 7-Point Electrical Hook-up
- Halogen Headlights
- Under-Floor Spare Tire
- Dual Battery Charge Control
- Single-Motor Windshield Wipers with Wet Arm

EXTERIOR STORAGE

- Insulated Luggage Doors
- Single-Paddle/Metal Latches
- Continuous One-Piece Bulb Seals
- Gas Lift Strut Supports—One Per Door
- Steel Seal Frames
- Carpeted Luggage Compartments
- Lighted Luggage Compartments

INTERIOR

- 3 Interior Decors
- Skylight in Tub/Shower
- Wall-to-Wall Carpet with Pad—Living & Bedroom
- Vinyl Floor Covering—Galley & Bath
- Wood Drawers
- Roller-Guide Drawer Slides with Transit Ship Locks

INTERIOR (CONT.)

- Brass-Finished Cabinet Hardware
- Seat Belts at Designated Seating Positions
- Shades—Day/Night in Living, Night in Bedroom
- Bedspread
- Restonic® Innerspring Mattress
- Slide-Out Dinette Bins with Locks
- Cabinet Doors & Drawers
- Window Covering
- Bright Brass Bath Accessories
- Entry Rail (Oak & Brass)
- Raised Panel, Overhead Cabinet Doors
- Adjustable Cabinet Shelves (Selected Cabinets)
- Sink Cutting Board
- Large, Double Stainless Steel Sink

INTERIOR AUTOMOTIVE

- Intermittent Wiper Control
- Double-Swivel Sun Visors with Map Pockets
- Engine Cover Convenience Tray
- Cruise Control
- Radio with Cassette AM/FM/MX Electronic Tuning
- Tilt Steering Wheel
- Auxiliary Start Circuit
- Battery Disconnect System
- Auto A/C Heater Combo
- Battery-Powered Radio Switch—Main/Auxiliary
- Driver/Passenger Side Magazine Rack
- Driver/Passenger Captain's Chairs with Reclining Back/Slide Controls
- 3-Point Seat Belts on Driver/Passenger Seats

INTERIOR LIGHTING

- Decor Lighting
- Incandescent Lighting
- Make-Up Lights in Bath

PLATFORM CONSTRUCTION

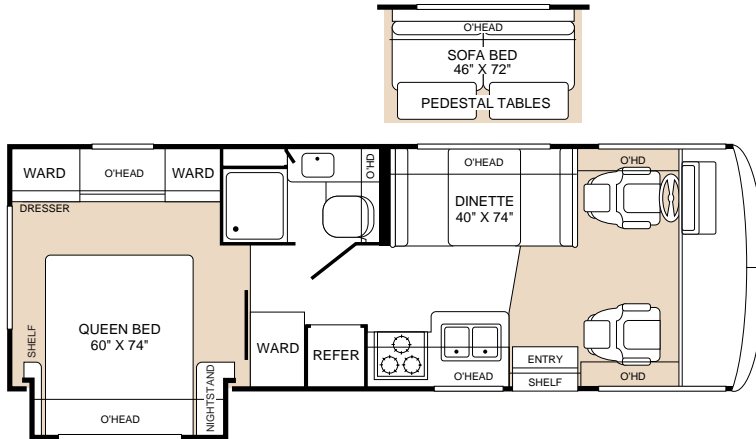
- Basement Floor Configuration
- Heated Water & Holding Tank Compartments
- Carpeted, Galvanized Luggage Compartments
- Steel Truss System
- Power Platform II

MODEL 25F

- Bedroom Slide-Out with Island Queen Bed

- Bedroom Feature Cabinets with Dresser and Integrated Vanity
- Fully Enclosed Bathroom

- Dinette or Optional Sofa Bed with Pedestal Tables

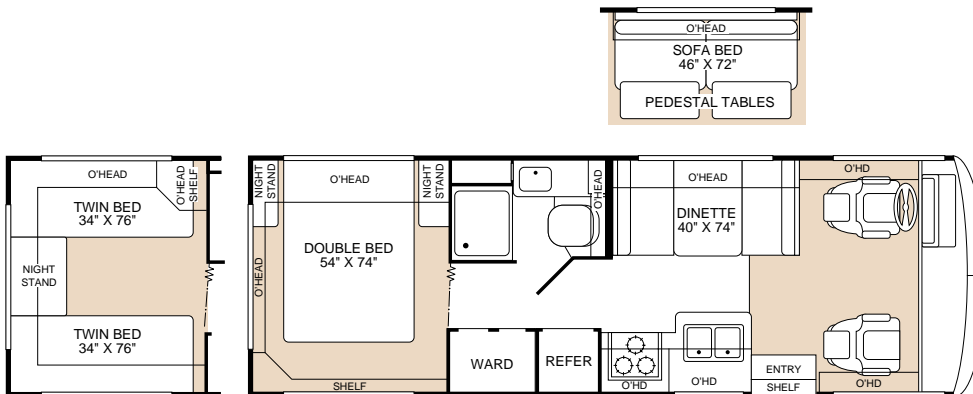


MODEL 25Y

- Island Double Bed
- Optional Twin Beds

- Fully Enclosed Bathroom
- Double Door Wardrobe

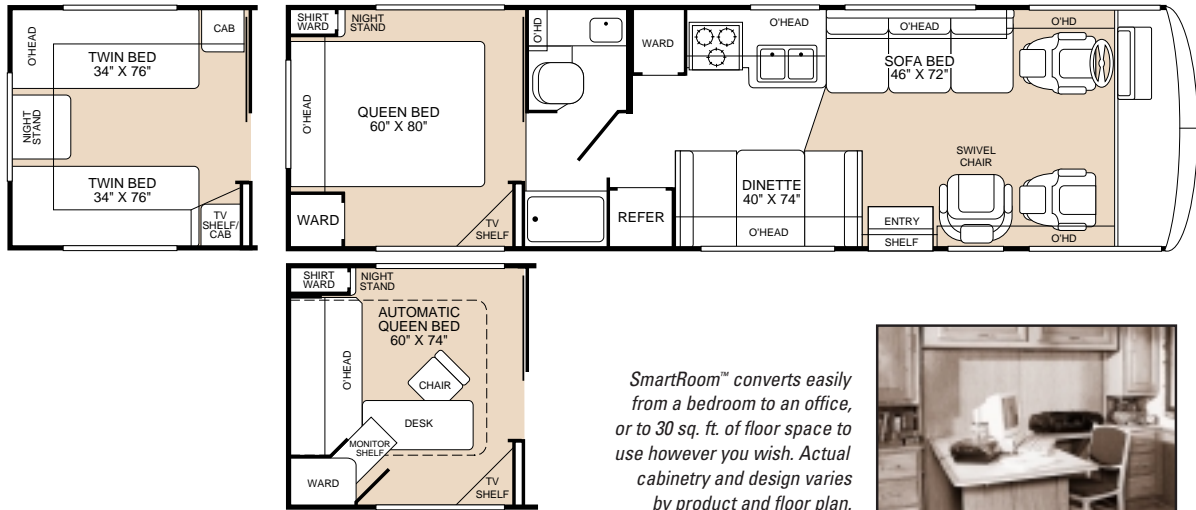
- Dinette or Optional Sofa Bed with Pedestal Tables





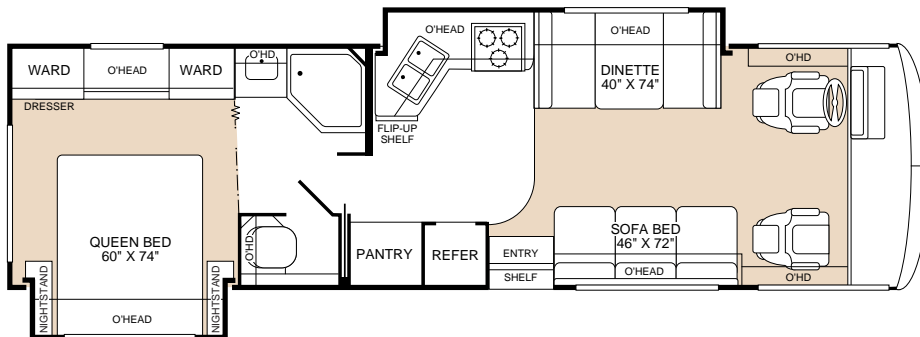
MODEL 30H

- Optional SmartRoom™
- Island Queen Bed
- Optional Twin Beds
- Split Bathroom
- Dinette
- Sofa Bed
- Swivel Chair



MODEL 31A

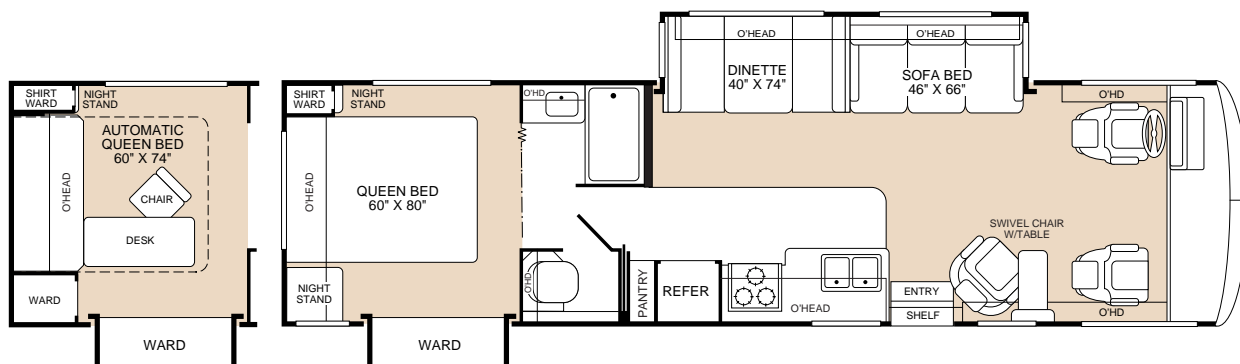
- Bedroom Slide-Out with Island Queen Bed
- Bedroom Feature Cabinets with Dresser and Integrated Vanity
- Spacious Pantry
- Private Toilet
- Galley/Dinette Slide-Out
- Sofa Bed



MODEL

32V

- Optional SmartRoom™
- Island Queen Bed
- Wardrobe Slide-Out
- Swivel Chair with Table
- Private Toilet
- Living Room Slide-Out with Sofa Bed and Dinette

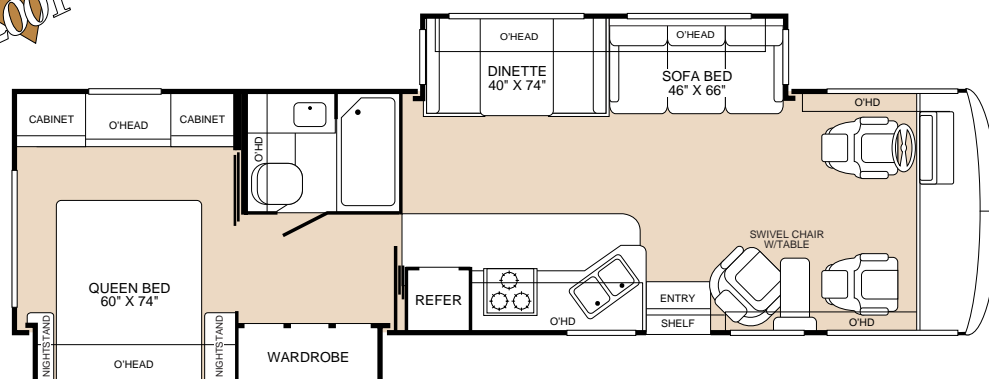


MODEL

33R

- Bedroom/Wardrobe Double-Length Slide-Out with Mirrored Doors and Large Drawers
- Fully Enclosed Bathroom with Tub/Shower
- Bedroom Feature Cabinets with Integrated Vanity
- Living Room Slide-Out with Sofa Bed and Dinette
- Swivel Chair with Table

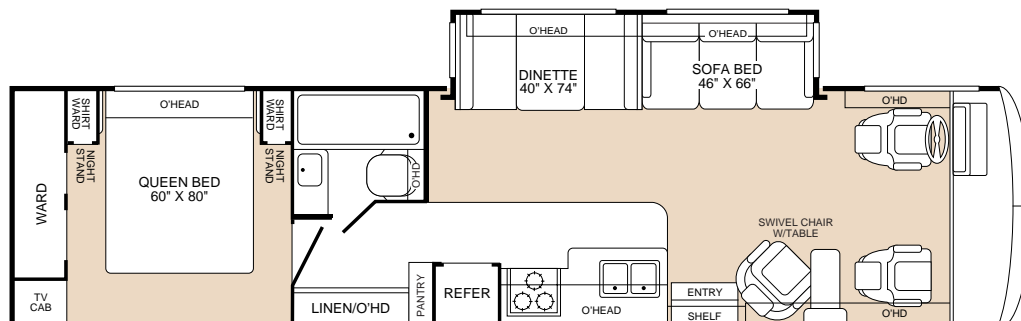
NEW FOR 2001



MODEL

34D

- Island Queen Bed
- Dual Nightstands and Shirt Wards
- Fully Enclosed Bathroom with Tub/Shower
- Spacious Wardrobe
- Living Room Slide-Out with Sofa Bed and Dinette
- Swivel Chair with Table



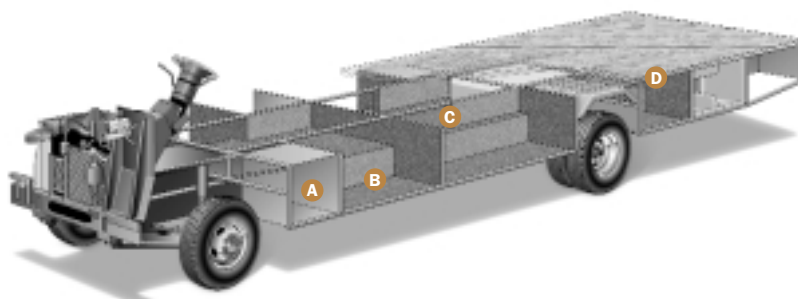
Flair®

2001 OPTIONS

2001
NEW FOR

APPLIANCES	25F	25Y	30H	31A	32V	33R	34D
Fan-Tastic® Power Roof Vent	OPT	OPT	OPT	OPT	OPT	OPT	OPT
8-cu. ft. Dometic® Double-Door Refrigerator-AC/Gas	OPT	OPT	OPT	OPT	OPT	OPT	OPT
Compact Disc Player	OPT	OPT	OPT	OPT	OPT	OPT	OPT
Panasonic® VCR/VHS	OPT	OPT	OPT	OPT	OPT	OPT	OPT
Winegard® Satellite Dish	OPT	OPT	OPT	OPT	OPT	OPT	OPT
ELECTRICAL	25F	25Y	30H	31A	32V	33R	34D
CSA 4.0kW Generator-Onan® Microlite	OPT	OPT	OPT	OPT	OPT	OPT	OPT
CSA ECC w/Dual A/C with 5.5kW Generator Upgrade	N/A	N/A	OPT	OPT	OPT	OPT	OPT
ECC w/Dual A/C with 5.5kW Generator Upgrade	N/A	N/A	OPT	OPT	OPT	OPT	OPT
CSA Package-Ford®	N/A	N/A	OPT	OPT	OPT	OPT	OPT
CSA Package-Workhorse®	OPT	OPT	OPT	N/A	OPT	N/A	N/A
EXTERIOR	25F	25Y	30H	31A	32V	33R	34D
Awning - USA	OPT	OPT	OPT	OPT	OPT	OPT	OPT
4-pt. Manual Hydraulic Levelers-Workhorse®	STD	OPT	OPT	N/A	STD	N/A	N/A
4-pt. Manual Hydraulic Levelers-Ford®	N/A	N/A	OPT	STD	STD	STD	STD
Heated Remote Rear View Mirrors	OPT	OPT	OPT	OPT	OPT	OPT	OPT
Rear Vision Camera	OPT	OPT	OPT	OPT	OPT	OPT	OPT
EXTERIOR AUTOMOTIVE	25F	25Y	30H	31A	32V	33R	34D
Workhorse® Chassis 7.4L Vortec™ Engine	OPT	OPT	OPT	N/A	OPT	N/A	N/A
Ford® Chassis 6.8L Engine	N/A	N/A	OPT	OPT	OPT	OPT	OPT
INTERIOR	25F	25Y	30H	31A	32V	33R	34D
SmartRoom™	N/A	N/A	OPT	N/A	OPT	N/A	N/A
Shower Curtain	STD	STD	N/A	N/A	N/A	N/A	STD
Folding Shower Door	N/A	N/A	STD	N/A	N/A	N/A	N/A
Shower Door with Bright Brass Frame	N/A	N/A	N/A	STD	STD	N/A	N/A
ABS Molded Shower Pan with Folding Door	N/A	N/A	STD	N/A	N/A	STD	N/A
ABS Molded Shower Pan with Door	N/A	N/A	N/A	STD	STD	N/A	N/A
ABS Molded Tub with Shower Curtain	N/A	N/A	N/A	N/A	N/A	N/A	STD
Solid Divider Doors	STD	N/A	STD	N/A	N/A	STD	STD
SLIDE-OUT	25F	25Y	30H	31A	32V	33R	34D
Living Room-Dinette/Sofa	N/A	N/A	N/A	N/A	STD	STD	STD
Galley-Galley/Dinette	N/A	N/A	N/A	STD	N/A	N/A	N/A
Bedroom Wardrobe-Closet/Organizer	N/A	N/A	N/A	N/A	STD	N/A	N/A
Bedroom-Bed	STD	N/A	N/A	STD	N/A	N/A	N/A
Bedroom-Bed/Wardrobe	N/A	N/A	N/A	N/A	N/A	STD	N/A

Flair's Power Platform II is a unique truss design welded together using tubular steel that's durable, strong and dependable. The result is a quiet, and nearly flawless ride, increased floor strength, and substantially more storage space below. An all-steel foundation further reduces stress loads on the sidewalls and minimizes chassis flex on uneven roads.



A Easy access compartments let you get to Flair's batteries.

B All exterior compartments are reinforced with substantial steel outriggers for increased durability and years of cargo carrying.

C Full basement construction maximizes space beneath the floor, encloses the heated water and holding tank compartments, and provides easy-to-reach, pass-through storage.

D The floor is a vacuum-bonded composite of steel tubing, foam insulation, and marine-grade plywood cut to our exact specs for lightweight strength and resistance to moisture.

Drawing for illustrative purpose only to highlight aspects of motor home construction. Actual motor home design depends on model and is subject to change.



2001 SPECIFICATIONS



FORD® CHASSIS	25F	25Y	30H	31A	32V	33R	34D
Engine LD	N/A	N/A	6.8L	6.8L	6.8L	6.8L	6.8L
Wheelbase	N/A	N/A	190"	208"	208"	208"	208"
GVWR lbs/kgs (1)	N/A	N/A	18,000/8,165	20,500/9,299	20,500/9,299	20,500/9,299	20,500/9,299
Front GAWR lbs/kgs (2)	N/A	N/A	7,000/3,176	7,000/3,176	7,000/3,176	7,000/3,176	7,000/3,176
Rear GAWR lbs/kgs (2)	N/A	N/A	11,000/4,990	13,500/6,124	13,500/6,124	13,500/6,124	13,500/6,124
Base Weight lbs/kgs (3)	N/A	N/A	14,300/6,486	15,370/6,972	15,410/6,990	15,180/6,886	15,400/6,986
GCWR lbs/kgs (4)	N/A	N/A	23,000/10,433	25,500/11,567	25,500/11,567	25,500/11,567	25,500/11,567
Hitch Rating/Tongue Weight lbs	N/A	N/A	5,000/500	5,000/500	5,000/500	5,000/500	5,000/500
Hitch Rating/Tongue Weight kgs	N/A	N/A	2,268/227	2,268/227	2,268/227	2,268/227	2,268/227
Fuel Capacity gal/lbs (6.1 lbs/gal)	N/A	N/A	75/450	75/450	75/450	75/450	75/450

WORKHORSE® CHASSIS	25F	25Y	30H	31A	32V	33R	34D
Engine LD	7.4L	7.4L	7.4L	N/A	7.4L	N/A	N/A
Wheelbase	158 1/2"	158 1/2"	190"	N/A	208"	N/A	N/A
GVWR lbs/kgs (1)	14,800/6,714	14,800/6,714	17,000/7,712	N/A	18,000/8,165	N/A	N/A
Front GAWR lbs/kgs (2)	5,500/2,495	5,500/2,495	6,000/2,722	N/A	6,000/2,722	N/A	N/A
Rear GAWR lbs/kgs (2)	10,000/4,536	10,000/4,536	11,000/4,990	N/A	12,000/5,444	N/A	N/A
Base Weight lbs/kgs (3)	12,260/5,562	11,460/5,199	13,090/5,938	N/A	14,990/6,800	N/A	N/A
GCWR lbs/kgs (4)	18,300/8,301	18,300/8,301	20,500/9,299	N/A	21,000/9,526	N/A	N/A
Hitch Rating/Tongue Weight lbs	3,500/350	3,500/350	3,500/350	N/A	3,500/350	N/A	N/A
Hitch Rating/Tongue Weight kgs	1,588/159	1,588/159	1,588/159	N/A	1,588/159	N/A	N/A
Fuel Capacity gal/lbs (6.1 lbs/gal)	60/360	60/360	75/450	N/A	75/450	N/A	N/A

DIMENSIONS	25F	25Y	30H	31A	32V	33R	34D
Length (5)	26' 0"	26' 0"	31' 6"	32' 0"	33' 0"	34' 0"	35' 0"
Height (with A/C)	11' 10"	11' 10"	11' 10"	11' 10"	11' 10"	11' 10"	11' 10"
Width (maximum) (6)	102"	102"	102"	102"	102"	102"	102"
Interior Height (maximum)	79"	79"	79"	79"	79"	79"	79"
Interior Width (maximum)	96"	96"	96"	96"	96"	96"	96"

LIQUID CAPACITIES (GALLONS/LITERS)	25F	25Y	30H	31A	32V	33R	34D
Fresh Water Holding Tank (8.3 lbs/gal)	75/284	100/378	75/284	75/284	80/303	80/303	75/284
Grey Water Holding Tank (8.3 lbs/gal)	45/170	50/189	50/189	50/189	50/189	50/189	50/189
Black Water Holding Tank (8.3 lbs/gal)	50/189	50/189	50/189	50/189	50/189	50/189	50/189
Appliance LPG Tank (4.5 lbs/gal) (WC) (7)	25/95	25/95	25/95	25/95	25/95	25/95	25/95
Water Heater Tank (8.3 lbs/gal)	6/23	6/23	6/23	6/23	6/23	6/23	6/23

METRIC CONVERSIONS:	Feet to meters: ft x .304 = meters	Lbs to kgs: lbs x .454 = kgs	Gallons to liters: gal x 3.78 = ltrs
---------------------	------------------------------------	------------------------------	--------------------------------------

1. GVWR (Gross Vehicle Weight Rating): Means the maximum permissible loaded weight of the motor home. The GVWR is equal to or greater than the sum of the unloaded vehicle weight plus the net carrying capacity.
2. GAWR (Gross Axle Weight Rating): Means the maximum permissible loaded weight a specific axle is designed to carry.
3. BW (Base Weight): Means the weight of the motor home without fuel, options, water, cargo or passengers.

4. GCWR (Gross Combined Weight Rating): Means the value specified by the motor home manufacturer as the maximum allowable loaded weight of this motor home with its towed vehicle. Towing and braking capacities may differ. Refer to Fleetwood and chassis manufacturer manuals for complete information.

5. Length taken from front bumper to rear bumper.

6. Excludes safety equipment and awnings.

7. Tank Manufacturer's listed water capacity (WC). Actual LPG capacity is 80% of water listing as required by the safety code.

N/A: Information not available at the time of publication.

IMPORTANT—PLEASE READ: Product information and photography included in this brochure were as accurate as possible at the time of publication. For the most current product information and changes, please visit our website at www.fleetwood.com or contact your local Fleetwood dealer. Subsequent refinements may be evident in the actual product. Prices and specifications are subject to change without notice. All weights, fuel, liquid capacities and dimensions are approximate. Fleetwood has designed its recreational vehicles to provide a variety of uses for its customers. Each vehicle features optimal seating, sleeping, storage and fluid capacities. The user is responsible for selecting the proper combination of loads to ensure that the recreational vehicle's capacities are not exceeded.

WHAT HAPPENS WHEN YOU SET THE STANDARDS OF RV QUALITY FOR OVER 50 YEARS?

YOU SET THEM EVEN HIGHER...

Our customers expect us to. As a matter of fact, first-time RV buyers, who bought other manufacturers' RVs, tell us they wish they'd spent a little bit more for better quality. That's why experienced buyers are more likely to buy a Fleetwood RV.* That's also why Fleetwood RV invests in people, systems, and manufacturing quality that are second to none. This *may* make us a bit more expensive than some brands, but satisfied Fleetwood RV owners know we're worth it.

PEOPLE...

We hire engineers, designers and drafters from leading automotive design schools. Our front-line associates are well-trained, quality-minded men and women who take pride in their work. No other manufacturer has a larger, more professional team behind their products.

SYSTEMS...

Our product development team uses state-of-the-art, computer-assisted-design (CAD) technology to build in fit and finish right from the drawing board. Each product is meticulously documented with over 3,500 pages of engineering drawings. A computerized bill of materials

details over 20,000 pieces that go into your motor home. And, a vehicle specific *Electronic Parts Catalog* shows 600 – 800 common parts... so, if you need a new part, your authorized Fleetwood RV service dealership knows exactly what you need. Some manufacturers may not invest the extra time and money to accurately document their products, which could cost you plenty in headaches and hassles down the road.

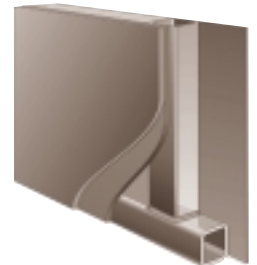
MANUFACTURING...

We only do what we know we're best at—building a quality-finished motor home. When it comes to the appliances, doors, windows and furniture, we partner with other recognized leaders to do what they know best... top names like Sharp®, Panasonic®, Dometic®, Restonic® and Flexsteel®. Some manufacturers will tell you partnering like this makes us final assemblers. We call it working smarter to bring you more value.

QUALITY...

The quality outside reflects the quality inside—places where you can't see it, but where it really counts. For example, we use vacubonded sidewall construction that's required for the special needs of a

For strength, noise reduction and insulation, composite sidewalls and floors are made of steel, plywood and polystyrene foam.



motor home. Our new TuffPEX™ plumbing system is able to withstand temperatures as low as -40° F. Before any unit rolls off the line at each of our plants, it goes through a documented checklist containing hundreds of items specific to that product. It won't leave the plant until it has met our high standards. And, the list goes on.

From the drawing board to the assembly line, we will continue to develop and manufacture quality products for our customers.

Fleetwood RV... setting standards beyond your expectations.

**Angus Reid RV Market Segmentation Study, 1998*

TuffPEX™ is a trademark of Uponor.

Aided by the IronCAD™ system, hundreds of analysis and refinement hours are spent before prototypes are built.



Time is devoted to refining the style and aerodynamics of every Fleetwood motor home.



We build our cabinets and secure them to the floor before the walls go up to add strength and help eliminate noises.



Flair®

FLEETWOOD'S FAR-REACHING WARRANTY AND SERVICE PROGRAM



LIMITED ONE-YEAR/ THREE-YEAR WARRANTY

Leaving the Fleetwood dealership after you've purchased your RV doesn't mean leaving each dealer's commitment to your satisfaction behind.

OWNERCARE, Fleetwood's extensive warranty and service program, provides one/three year(s) of dedicated customer satisfaction. OWNERCARE stands out as one of the RV industry's most comprehensive programs and includes systems and applications, construction, no deductible and no service charge. See your nearest Fleetwood dealer for a full explanation of benefits and restrictions.

FULLY TRANSFERABLE

At Fleetwood RV, we're confident in our products and don't hesitate to stand behind them. Your newly purchased Fleetwood RV comes with one of the industry's most comprehensive warranties, fully transferable for the first 12 months.

NATIONAL COVERAGE

Have a question about your new Fleetwood RV? We've got it covered. The nation's largest trained dealer network—ready, willing and able to provide you with the services you need to make every moment of owning your RV enjoyable. Over 1,100 Fleetwood dealers throughout the U.S. and Canada are available to you. With national coverage, peace of mind and complete satisfaction are just a phone call away.



AN EXTRA THANK YOU

Ask your dealer about your Thousand Trails complimentary 30-day membership certificate. It's your chance to get going in your new RV and enjoy some scenic camping, plus our way of thanking you again for your purchase of a Fleetwood RV. For more information on your complimentary membership certificate, please call 1-800-205-0606.

Happy (Thousand) Trails!



FLEETWOOD RV AND MOTOR SPORTS: A WINNING TEAM



Three wide in the first turn. 200 miles per hour on the back straight. Passing for the lead through the short chute. Nothing beats the excitement of NASCAR racing. Every year thousands of NASCAR fans and Fleetwood RV owners travel to races to support their favorite drivers, enjoy time with family and rekindle friendships.

RVs have become as much a part of motorsports as pit row and the checkered flag. That's why Fleetwood RV is a proud sponsor of 1999 Winston Cup Champion Dale Jarrett and the Robert Yates Racing Team.

As the number one RV manufacturer* in the country, our winning ways continue. Fleetwood RV is now the "Official Recreational Vehicle" at nine

*According to Statistical Surveys Jan. '99-Dec. '99

International Speedway Corporation racetracks.** And for Fleetwood owners, emergency service crews are available at select tracks to ensure a trouble-free weekend. While you're enjoying the race, be sure to look for the Fleetwood RV Prize Patrol and go home with some exciting giveaways.

So this weekend, pack up your friends and family and experience the thrill of cheering on Dale firsthand, in first-class style, with Fleetwood RV.

** Daytona International Speedway, Darlington Raceway, Talladega Superspeedway, California Speedway, Richmond International Speedway, Michigan Speedway, Watkins Glen International Speedway, Phoenix International Raceway, Homestead-Miami Speedway.



www.fleetwood.com

Visit our website to find a dealer near you, learn more about other Fleetwood products or purchase Fleetwood branded apparel. Or call 1-800-444-4905.

FOR CUSTOMER ASSISTANCE, call toll free 24 hours a day at 1-800-322-8216, visit our website, or you may write to Fleetwood Enterprises, Inc., P.O. Box 7638, Riverside, CA 92513-7638.

IMPORTANT—PLEASE READ: Product information and photography included in this brochure were as accurate as possible at the time of publication. For the most current product information and changes, please visit our website at www.fleetwood.com or contact your local Fleetwood dealer. Subsequent refinements may be evident in the actual product. Prices and specifications are subject to change without notice. All weights, fuel, liquid capacities and dimensions are approximate. Fleetwood has designed its recreational vehicles to provide a variety of uses for its customers. Each vehicle features optimal seating, sleeping, storage and fluid capacities. The user is responsible for selecting the proper combination of loads to ensure that the recreational vehicle's capacities are not exceeded.

FLEETWOOD RV

America's Favorite Recreational Vehicles

Fleetwood Enterprises, Inc., RV Marketing, P.O. Box 7638, Riverside, CA 92513-7638

Your local Fleetwood RV dealer is:



This award certifies that Fleetwood has met Ford's rigid quality standards for utilizing a Ford chassis.

2001 FLAIR INTERIOR FABRICS

Your motor home takes you to new adventures every day. And since this home will be an enduring part of your life, we offer a selection of colors and textures that are a fine blend of classic and contemporary style. We search to obtain quality fabrics that are elegant, yet durable, to keep up with your active lifestyle. Year after year, the look will be as welcoming to you as it is to your guests.

MIDNIGHT BLUE



EARTHEN ROSE



CELESTIAL TEAL



FLEETWOOD FAMILY FUN... THE JOURNEY CONTINUES

Where do you want to be? The possibilities are almost limitless. From mini motor homes to luxury coaches, from gas to diesel performance, there's a Fleetwood motor home to fulfill your dreams.

We know exactly how you feel, realizing there's a whole new world to experience. That's why we made sure you can choose from the broadest selection of brands and floor plans the world has to offer. It's no wonder that one out of four motor homes sold is a Fleetwood.*

This is your journey. Take it for a spin.

*According to Statistical Surveys Jan.'99–Dec.'99



© 2000 Fleetwood Enterprises, Inc.
Inventory Control Number FL01B1/1st Edition 7/00

