



BRECKENRIDGE®

FINE LIFE™



FL-CB Shown in Cherry

FINE LIFE™

BRECKENRIDGE®





Kitchens offer deluxe appliances, generous storage, tons of workspace, track lighting, distinctive seating in dining areas, & your choice of Richmond cherry or light maple cabinetry. FL-CB Shown in Cherry



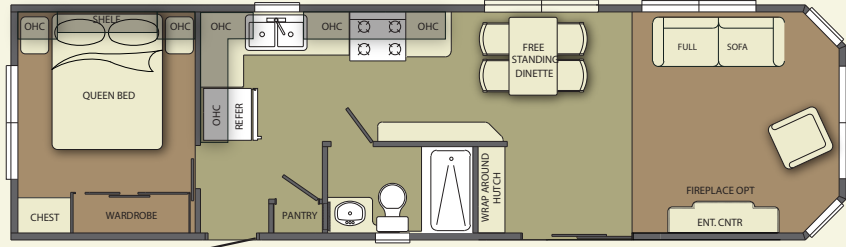
Baths include a porcelain residential toilet, single lever sink faucet, full-size, one-piece F/G tub/shower, & recessed medicine cabinet. FL-CB Shown in Cherry

Breckenridge Fine Life is an entry-level, semi-permanent summer cottage that's geared toward younger families. Designed with kids in mind, it offers bunks, lofts and all sorts of great places they can call their own. As with all Breckenridge products, Fine Life boasts modern construction techniques coupled with quality building materials, including name brand household appliances, huge amounts of storage areas, and all the creature comforts of home.



Bedrooms offer a chest of drawers & wardrobe, comfortable queen sized memory-foam mattress w/box spring & frame, convenient side lighting & window valance w/soft curtains & blinds. FL-DBDL Shown in Cherry

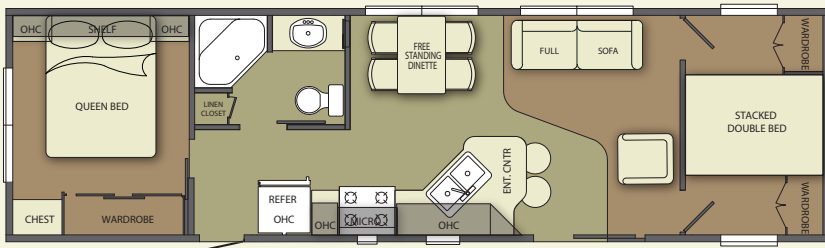
BRECKENRIDGE FINE LIFE™ FLOORPLANS



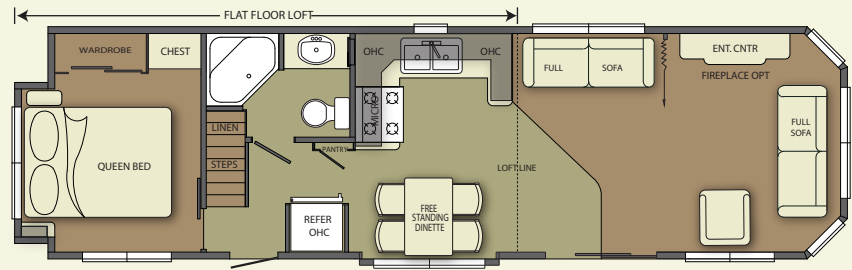
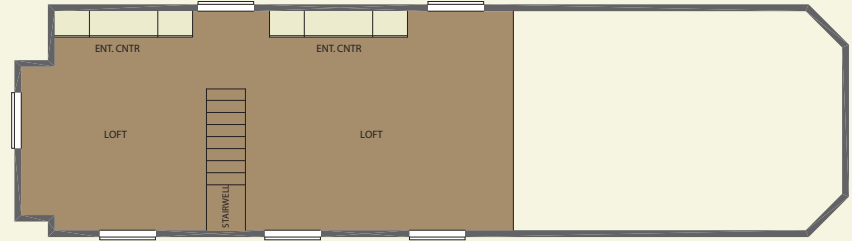
FL-CB



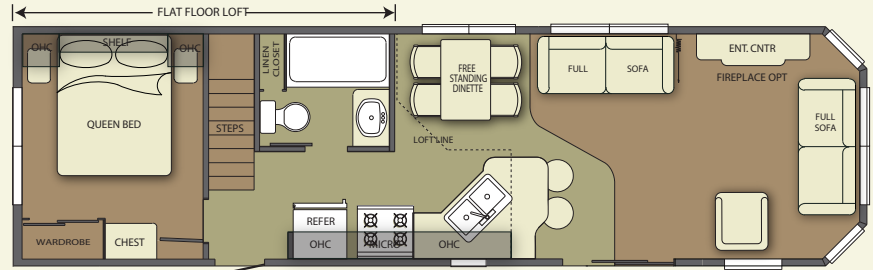
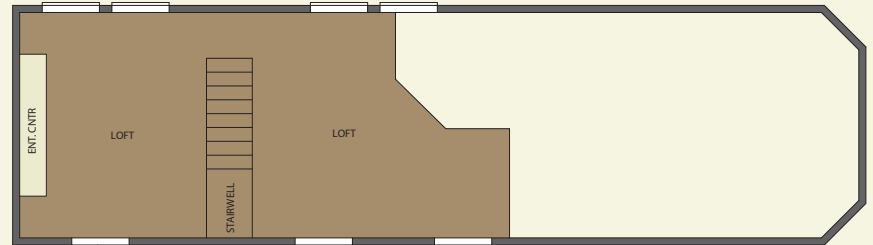
FL-FDB



FL-JJ



FL-DBDL (ALSO AVAILABLE IN TALL)



FL-DLT



BRECKENRIDGE®

FINE LIFE™

STANDARD FEATURES

- 6'-4" Entry Door Heights
- 40,000 BTU Under Counter Furnace
- Vented Soffit & Attic
- Water Heater Bypass Kit
- Prep for Under Unit A/C
- Gas Lines at Both Ends

HEAVY DUTY EXTERIOR CONSTRUCTION FEATURES:

- Double 2 x 6 Floor Perimeter Joists
- Vinyl Siding w/Limited Lifetime Warranty
- Wide Aluminum Roof Edge Fascia
- Non-Corrosive One-Piece Underbelly
- Detachable Hitch
- 6" Exterior Soffit

HEAVY DUTY INTERIOR CONSTRUCTION FEATURES:

- All Wood Construction Cabinets
- Sealed Decking at Entry Doors & Plumbing Locations
- Double Windows at Bedroom Back Wall*
- 7' Sidewall Height w/Cathedral Ceiling

DECORATOR FEATURES:

- Decorator Glass China Cabinets*
- Mirrored Wardrobe Doors
- Chandelier in Dining Room
- Track Lighting in Kitchen*
- Plush Style Carpet w/High Density Carpet Pad
- Decorator Window Coverings
- Vertical Blind at Patio Door
- Large Mirror w/Light Bar at Vanity*
- Recessed Mirrored Medicine Cabinet in Bath
- Metal Mini Blinds Throughout
- Bedroom Headboard Mirror & Cabinet*
- 2 Night Stands or Shelves
- Wall Mount Lamps in Bedroom
- Deluxe Shower Curtain
- Residential Queen Memory Foam Mattress, w/Box Spring & Frame*

CONVENIENCE FEATURES:

- Patio Light at Both Entry Doors
- RPT Coded & Inspected
- Dead Bolt Door Lock
- Designer Rolled Good Floors in Kit/Dining, Bath, Main & Rear Entrance*
- Porcelain Residential Toilet
- Entertainment Center w/China Cabinet *
- Exterior GFCI Receptacle
- Phone Jack
- Full-Extension Ball Bearing Drawer Guides

VALUE BY DESIGN PACKAGE:

Included Features:

- Vinyl, Thermo Pane, Tilt & Clean, Single Hung Windows
- Aluminum Thermo Pane Patio Door
- Full Sofa w/Throw Pillows & Air Mattress
- Swivel Rocker Living Room Chair
- Rectangular Hardwood Dinette & 4 Chairs w/In-Seat Storage
- Hardware Framed Cabinet Doors & Drawer Fronts
- 18 CuFt Black Frost Free Refrigerator w/Ice Maker
- 30" Deluxe Black Range w/Electronic Ignition
- 30" Black Space Maker Microwave
- 16 Gal. Gas/Electric Water Heater w/DSI
- 50 AMP Electrical Service
- Fold Down Sink Tray
- One Piece Fiberglass Tub/Shower
- Vaulted Ceiling
- 2 x 4 Sidewall Construction – 16" O.C.
- 2 x 6 Floor Construction – 16" O.C.
- Steel I-Beam Frame
- Full Width 5/8" Floor Decking
- 30 Year Architectural Shingles
- 30# Trussed Roof Rafters – 16" O.C.

- Solid Wood Cabinet Construction w/Plywood Drawers
- Formaldehyde Free Fiberglass Insulation
- Insulation Values:
R-11 Floor
R-11 Ceiling
R-17.2 Walls

RESIDENTIAL INTERIOR DECORS

- Residential Style Interior Decors
- Queen Bedspread, Pillow Shams & Pillows
- Deep Bowl Stainless Steel Kitchen Sink
- Single Lever Kitchen Faucet w/Pull Out Sprayer
- 6 Panel Passage Doors

POPULAR OPTIONS

- Shutters
- Ceiling Fan w/Light Kit
- AM/FM/DVD/CD Stereo w/Surround Sound Capability
- Skylight(s)*
- Electronic Fireplace*
- Cold Weather Package

* - Not Available in Some Models
CSA Z-241 Available on Some Models

Due to constant product improvements, the equipment, specifications, component parts, and standard/optional equipment are subject to change without notice or obligation. Product photography or diagrams may show equipment that is optional. Breckenridge Corporation reserves the right to make changes in prices, and models, and to discontinue models without notice or obligation.

1 BRAND IN DESTINATION CAMPING FOR MORE THAN 15 YEARS

WWW.BRECKENRIDGEFINERLIVING.COM

800-223-2376



© 2013 BRECKENRIDGE, ALL RIGHTS RESERVED, PRINTED IN U.S.A.

Breckenridge products meet or exceed the required RVIA code. Most models are available with CSA approval. The photographs in this product literature show Breckenridge standard items and feature some of the many Breckenridge options.

For Additional Information Contact:

