



Many floor plans feature walk-thru baths with neo-angle showers

30GS features a large kitchen with tons of storage space



The kitchen's deep cabinets, over-sized appliances, residential style double sink, and an abundance of counter space add function to style

Home-like comforts define the bedroom with special touches like large wardrobes, quality innerspring mattress, and color-coordinated bedspread and window treatments.



## 2003 SKAMPER ULTRA



## JUST SHOW YOUR CARD AND GO!

We build our products better and we protect you with the industry's best warranty coverage, but we know that sometimes things can go wrong on the road. So when you become the proud owner of a new Skamper, it's just the beginning of our exclusive 'round-the-clock Customer Care Program.

Customer Care provides complete and fully paid roadside assistance, emergency road service, and special warranty support benefits that go with you wherever you travel. You get immediate access to fast, dependable service when and where you need it.

Add our toll-free warranty and service appointment assistance and a technical assistance hot line and you have the security and peace of mind of full-time support.

Our exclusive 24-hour Customer Care benefits include:

- Fully paid emergency roadside assistance
- Free jump starts
- Free fuel delivery
- Free lock-out service
- Free on-site mechanical service in the event of a breakdown
- 24-hour technical hot line
- Toll-free service appointment scheduling nationwide
- Warranty service assistance at over 6,800 qualified service agencies
- Free customer trip routing and map service.

We want you to be able to enjoy your new trailer or fifth wheel to the fullest. That's why we've provided Skamper Customer Care to take care of the problems that could spoil your travels.

## THE INDUSTRY'S BEST WARRANTY... BY FAR!

We're so confident in the design and construction of our products that they are covered by Thor's exclusive Full 2-Year Standard Warranty: "Hitch-to-bumper" coverage to protect your RV investment. The best protection in the RV industry—by far:

### Your Full 2-Year Warranty Includes:\*

- Refrigerator
- Power converter
- TV antenna
- Water pump
- And much more...
- Slide-out Mechanisms
- Water heater
- Microwave
- Doors
- LP tanks
- Range
- Electrical
- Awnings
- Furnace
- Plumbing
- Lavatory
- House stereo

\*See individual company warranty statements for details.

Product information, specifications, and photography in this brochure were as accurate as possible at time of printing. Photographs may contain some features that are optional on your vehicle. Since we continually strive to improve our products, actual products may differ. **Prices and specifications are subject to change without notice. All capacities are approximate and dimensions are nominal. Some features shown are optional and may be different or unavailable in Canada.** Vehicles are designed for recreational use only and not intended for use as a primary residence.

### Your Local Dealer:

### Why a Thor Product Is Your Best RV Value:

Thor Industries, Inc., listed on the New York Stock Exchange, proudly traces its history back over seventy years to the pioneering days of the RV industry with the founding of Airstream, the industry's oldest and most renowned brand. Our total commitment to quality and our philosophy of putting our customers first has led to our continuous growth. Today, Thor is the largest builder of RVs. Thor's strong financial condition and years of solid growth are your assurance that we will be here to serve you for years to come. We think this extra peace of mind is important when you are making a significant investment. Because our customers are always #1 with us, we work harder than other manufacturers to satisfy you.

Skamper Ultra invites you to check out the following companies to further enhance your RV experience:



D-70-094

©Thor Industries, Inc.



This brochure is printed on recycled paper as part of Thor's corporate effort to minimize waste and conserve our natural resources. Providing safe, fuel-efficient recreational vehicles is Thor's way of further demonstrating our role as the industry leader in safeguarding our nation's environment.



**THOR**  
AMERICA'S BEST RV VALUE

305 Steury Ave.  
Goshen, IN 46528  
(574) 534-1224  
www.skamper-rv.com

Litho U.S.A.

2003

# Skamper Ultra

LIGHTWEIGHT TRAVEL TRAILERS  
& FIFTH WHEELS







Model 30W with washer/dryer prep in laundry center

**SKAMPER ULTRA** shows you that high-end quality can be achieved in a lightweight design. The Skamper Ultra gives you both luxury and towability, plus an affordable price for astounding value. Fine fabrics and imposing cabinetry, along with quality furnishings, subtly blend together to fashion interiors with refined elegance. On the outside, the fiberglass laminated exterior on an all-aluminum super-structure frame exhibits the same level of refinement. The Skamper Ultra brings a higher degree of comfort and pleasure within the reach of today's families.

FABRICS



Chamomile Blue



Renegade Rose & Green



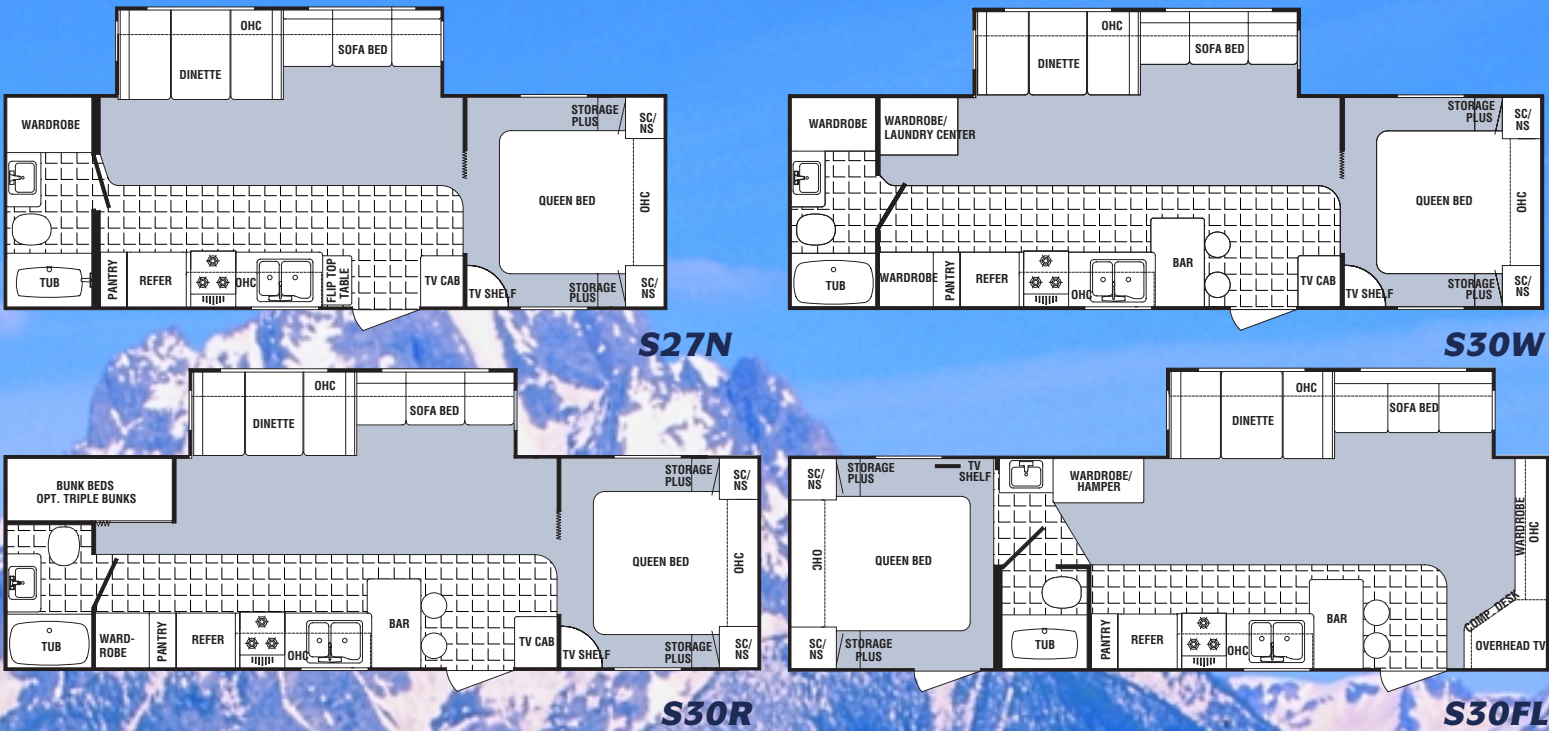
Autumn Rose & Green



Model 30W in Autumn Green

Quality furnishings create an ambience of beauty and comfort along with long-term value

2003 SKAMPER ULTRA TRAVEL TRAILER FLOOR PLANS



2003 SKAMPER ULTRA FIFTH WHEEL FLOOR PLANS



2003 SKAMPER ULTRA STANDARDS & OPTIONS

	TRAILERS	FW
<b>Standard Exterior Features</b>		
I-beam cambered chassis	•	•
AL-KO leaf spring axle suspension	•	•
EPDM one-piece seamless rubber roof	•	•
Corrosion free laminated Darco underbelly	•	•
Welded aluminum laminated frame (roof, floor and walls)	•	•
Laminated aluminum truss roof construction	•	•
Four wheel electric brakes	•	•
Powder coated entry step	•	•
Rain gutter with corner downspouts	•	•
Scare light	•	•
Entry assist handle	•	•
Ozite carpet in pass thru storage areas	•	•
Easy lube axles	•	•
2-30 lb. LP bottles with tray		
30" radius entry door	•	•
15" radial tires	•	•
ABS fender skirts	•	•
Automotive D-seal tinted radius clamp ring windows	•	•
<b>Standard Appliances and Electrical</b>		
Sub floor thermostatically controlled heated fresh water tank	•	•
Norcold double-door gas/electric refrigerator	•	•
System monitor panel	•	•
30M BTU forced air furnace with wall thermostat	•	•
Ducted heat	•	•
Pre-wired for A/C	•	•
Demand water pump	•	•
Three burner high output range with oven	•	•
Pre-wired for cable TV	•	•
Pre-wired for stereo	•	•
Range hood with light and fan	•	•
6 gallon gas/DSI water heater with bypass	•	•
Fire extinguisher	•	•
LP detector	•	•
Smoke detector	•	•
Solid state converter with built-in battery charger	•	•
Patio light	•	•
<b>Standard Interior Features</b>		
Shower curtain	•	•
Residential tile-like linoleum	•	•
Power roof vent in bathroom	•	•
Wallpaper border	•	•

	TRAILERS	FW
<b>Standard Interior Features (continued)</b>		
Bedroom TV shelf	•	•
Mini blinds throughout	•	•
Medicine cabinet with mirror (most models)	•	•
Fiberlink bathtub	•	•
5" thick dinette cushions	•	•
Trash bag holder	•	•
Double bowl white acrylic sink w/high rise faucet & dual sink covers	•	•
Oak mortise tenon cabinet doors	•	•
Glass décor light over the dinette	•	•
Coat rack	•	•
Magazine rack	•	•
Pin-up lights in the bedroom	•	•
Adjustable pantry shelves	•	•
ABS tub surround	•	•
Queen bed with matching bedspread	•	•
Pot and pan drawer under dinette	•	•
<b>Optional Features</b>		
Heated waste holding tanks	•	•
DSI water heater (gas/electric 6 gallon)	•	•
DSI water heater (gas/electric 10 gallon 30W only)	•	•
Spare tire with carrier	•	•
13.5 BTU A/C	•	•
15.0 BTU A/C	•	•
Free standing table	•	•
Washer/Dryer - 30W only	•	•
Electric front jacks		•
TV antenna	•	•
Spray-away wash station	•	•
AM/FM/CD Player w/4 speakers	•	•
Day/night shades	•	•
Microwave	•	•
Awning	•	•
Stove cover	•	•
Water filter system	•	•
Vitco RVQ grill	•	•
Sand pads on jacks	•	•
ABS slide tray (pass thru storage)	•	•
Hide-a-bed sofa	•	•
Fantastic vent	•	•
Roof rack and ladder	•	•
Safety glass	•	•

SPECIFICATIONS

SKAMPER ULTRA	S27N	S30R	S30FL	S30W	S27RK	S27RL	S28BH
Length	29' 4"	32' 10"	32' 10"	32' 10"	30' 11"	30' 11"	31' 7"
Exterior Width	8'	8'	8'	8'	8'	8'	8'
Exterior Height	10' 8"	10' 7"	11' 10"	10' 7"	11' 8"	11' 8"	11' 8"
Hitch Dry Weights (lbs.)	576	728	1170	672	1130	1264	1266
Gross Vehicle Wt. (lbs.)	7576	7728	8170	7672	9930	10064	10066
Unloaded Vehicle Wt.	5472	5802	5816	5994	6762	6936	7144
Net Cargo Capacity	2104	1926	2354	1678	3136	3130	2954
Fresh Water Cap. (gal.)	50	50	50	50	50	50	50
Dual Hold. Tanks Cap.	72	72	72	72	108	108	108
Tire Size	ST205/75R15	ST205/75R15	ST205/75R15	ST205/75R15	ST225/75R15	ST225/75R15	ST225/75R15
Furnace Size (BTU's)	30	30	30	30	30	30	30