



The plush and functional bedroom promises a perfect ending to your busy days. The residential queen size bed (king size is optional) with innerspring coils, pillowtop mattress and fabric wrapped headboard offers a quick trip to dreamland. Choose from four patterns of handmade bedspreads with accenting pillows. Directional halogen lighting provides bright light for reading or softer light for ambiance.

There's nothing pedestrian about the 2009 Triple E Commander, a first-class all-season motorhome. Whether you're a full-timer or weekend traveler, you'll be transported aboard the Commander, spoiled by plush upholstery and fabrics, finely crafted cabinetry and woodwork, a myriad of conveniences and solid construction. With its awe-inspiring list of standard features and outstanding options, the Commander turns the traveling into the best part of the trip.

The culinary possibilities are endless in this spacious slideout galley, equipped with the finest in appliances and accoutrements. You have it all with the 12 cu.ft. refrigerator with icemaker and water dispenser (optional), the convection microwave, the high rise rubbed bronze faucet, the pullout pantry, cherry cabinetry, Corian countertops, and the adjustable intensity halogen lighting. No detail has been overlooked.

Pictures on this page are of the A3712FGB in Sun Chasers Décor, with Standard Natural Cherry wood finish.

STANDARDS AND OPTIONS

CHASSIS AND SUSPENSION	A3202FB	A3509FB	A3710FB	A3711FWB	A3712FGB
Airbag Assist Suspension - Rear (N/A with FRED Option)	S	S	S	S	S
Alternator - 130 Amp	S	S	S	S	S
Block Heater	S	S	S	S	S
Chassis - Ford 6.8 L V-10 Triton 22,000 lb. GVWR, Five Speed TorqShift™ Transmission	S	S	-	-	-
Chassis - Workhorse W22, 22,000 lb. GVWR, 8.1 Vortec w/ 6 Speed Allison 1000 MH Series Transmission and Airbag Assist Front Suspension	0	0	-	-	-
Chassis - Workhorse W24, 24,000 lb. GVWR, 8.1 Vortec w/ 6 Speed Allison 2000 Series Transmission and Airbag Assist Front Suspension	-	-	S	S	S
Chassis - Freightliner FRED (Front Engine Diesel) - Cummins 340 HP ISB w/ 660 Ft Lb Torque, Allison 2350 Transmission and Onan 5.5KW Quiet Diesel Generator	0	0	0	0	0
Concealed Locking Fuel Fill Access	S	S	S	S	S
Hitch - Trailer Hitch Receiver w/ Wiring and Plug - Class III	S	S	-	-	-
Hitch - Trailer Hitch Receiver w/ Wiring and Plug - 600/6000 lb	-	-	S	S	S
Wheels and Tires - Aluminum Wheels w/ 255/70R22.5 Radial Ply Tires	S	S	S	S	S
DRIVERS AREA CONVENIENCES					
Air Conditioner - Chassis	S	S	S	S	S
Blinds - Driver and Passenger Side Roller	S	S	S	S	S
Cameras - Side Turn Cameras	0	0	0	0	0
Compass/Thermometer - Dash Mounted Directional Compass with Exterior Temperature	0	0	0	0	0
Cruise Control and Tilt Steering Wheel	S	S	S	S	S
Door - Driver c/w Power Window	S	S	S	S	S
Mats - Driver/Passenger Floor Mats	S	S	S	S	S
Mirrors - Heated Remote Exterior Mirrors	S	S	S	S	S
Rear view Camera/Monitor - Color LCD Display Mounted in Dash	S	S	S	S	S
Seat - Ultra Leather Driver Captain's Chair w/ 3 Point Seat Belts and 6 Way Power	S	S	S	S	S
Seat - Ultra Leather Passenger Captain's Chair w/ 3 Point Seat Belt	S	S	S	S	S
Steering Wheel - 18" diameter	-	-	S	S	S
Switch - Battery Boost (Coach to Chassis Batteries)	S	S	S	S	S
Switch - Battery Selector Switch for Radio	S	S	S	S	S
Wipers - Wet Arm Windshield Wipers c/w Intermittent Function	S	S	S	S	S
VEHICULAR					
Bumper - Integrated Fiberglass Rear Bumper - Steel Reinforced	S	S	S	S	S
Headlights - Halogen	S	S	S	S	S
Jacks - HWH "One Touch" Automatic Hydraulic Levelling Jacks with Touch Pad Control	S	S	S	S	S
Light - High Mounted Stoplight - LED Long Life	S	S	S	S	S
Lights - Halogen Automotive Driving Lights	S	S	S	S	S
Undercoating - Automotive Type	S	S	S	S	S
CONSTRUCTION					
Baggage Doors - Aluminum Baggage Doors c/w Gas Struts and Slam Latch	S	S	S	S	S
Baggage Doors - Side Sliding Baggage Doors under Galley Slide Out	-	-	-	-	S
GelCoat Fiberglass Front & Rear Cap	S	S	S	S	S
GelCoat Vetrolite Fiberglass Sidewalls	S	S	S	S	S
Lined and Lit Baggage Compartments	S	S	S	S	S
Roof - Domed Kemlite FRP Flexroof	S	S	S	S	S
Steel Cab Floor, Firewall, and Dash Structure	S	S	S	S	S
Vacuum Bonded Aluminum Framed Insulated Roof Construction	S	S	S	S	S
Vacuum Bonded Aluminum Framed Insulated Sidewall Construction with Thermal Break	S	S	S	S	S
Vacuum Bonded Steel Framed Insulated Floor Construction	S	S	S	S	S
Windows - Tinted Radius Corner Thermal Pane Windows	S	S	S	S	S

09 New for 2009 **S** Standard **0** tion

EXTERIOR	A3202FB	A3509FB	A3710FB	A3711FWB	A3712FGB
Diamondshield® Paint Protection Film on Front End	0	0	0	0	0
Door - Screened Entry Door w/ Stud Shield and Deadbolt Lock	S	S	S	S	S
Exterior Assist Handle - Monogrammed	S	S	S	S	S
Handle - Entry Door Assist Handle (Interior Mounted)	-	-	S	S	S
Ladder - Exterior c/w Detachable Lower Section	S	S	S	S	S
Lights - Side Mounted Docking (1 per Side)	S	S	S	S	S
09 New Look Front Cap	S	S	S	S	S
Paint - Full Body Exterior Paint w/ Clear Coat	S	S	S	S	S
Step - Triple Electric Retractable	S	S	S	S	S
Windshield - One Piece	S	S	S	S	S

INTERIOR	A3202FB	A3509FB	A3710FB	A3711FWB	A3712FGB
84" Interior Ceiling Height	S	S	S	S	S
Adjustable Shelves in Washer/Dryer Cabinet	S	S	S	S	S
09 Cabinetry - Solid Natural Cherry Face Framing and Solid Wood Veneer Panels	S	S	S	S	S
09 Cabinetry - Solid Harvest Cherry Face Framing and Solid Wood Veneer Panels	0	0	0	0	0
Ceiling - Flat with Padded Vinyl Headliner	S	S	S	S	S
Computer Tray - Passenger Side	0	0	0	0	0
Covers - Insulated Vent Covers	0	0	0	0	0
Detectors - Electronic Smoke, LP and CO	S	S	S	S	S
Doors - Solid Wood Raised Panel Cabinet Doors w/ hidden European Hinges	S	S	S	S	S
Drawers - Full Extension Ball Bearing Drawer Tracks w/ Snap Latches	S	S	S	S	S
Flooring - Carpeting in Living Area and Bedroom	S	S	S	S	S
Lamps - Courtesy Floor Lamps	S	S	S	S	S
Latches - Snap Latches on all Cabinet Doors	S	S	S	S	S
Lighting - Three Way Switched Interior Lights (Door, Dash and on Light)	S	S	S	S	S
Safe - Keylock Safebox	0	0	0	0	0
Shades - Day/Night Pleated	S	S	S	S	S
Slide Out - Electric Slide Out System in Bedroom	S	S	S	S	S
Slide Out - HWH Hydraulic Galley Area Slide Out System	-	-	-	-	S
Slide Out - HWH Hydraulic Living Area Flush Floor Slide Out System	S	S	S	S	S

FURNITURE	A3202FB	A3509FB	A3710FB	A3711FWB	A3712FGB
Booth Dinette - w/ Slide Out Drawers and Wall Mount Solid Cherry Edged Table w/ Laminate Top	0	0	0	0	0
Cabinet - Refreshment Center	0	0	-	-	-
Chair - Ultra Leather Captain's Chair on Passenger Side (Third Position)	S	-	-	-	-
Chair - Ultra Leather Captain's Chair on Passenger Side w/ Manual Foot Rest (Third Position)	-	-	S	S	S
09 Chairs - Two Extra Solid Wood Chairs for Cantilevered Dining Table Option	0	0	0	0	0
Flip Table Behind Passenger Seat	S	S	-	-	-
Hide-A-Bed - Cloth on Driver Side w/ Air Coil Mattress with 110V Air Pump	S	S	S	S	S
09 Table - Solid Wood Extendable Cantilevered Wall Mount Table w/ Hutch, c/w 2 Solid Wood Chairs and 2 Folding Chairs	S	S	S	S	S

GALLEY	A3202FB	A3509FB	A3710FB	A3711FWB	A3712FGB
Cook Top - Recessed Cook Top c/w High Output Burner and Solid Surface Recessed Bi-fold Range Cover	S	S	S	S	S
Countertop - Solid Surface Counter in Galley with Stainless Steel Undermount Sink and Solid Surface Sink Covers	S	S	S	S	S
Faucet - High Rise Oil Rubbed Bronze Galley Faucet w/ Sprayer	S	S	S	S	S
Flooring - High Pressure "Tile Look" Laminate Floor in Galley and Entrance Area	S	S	S	S	S
Micro/Convection Oven - (OTR) c/w 110v Range Hood and Light	S	S	S	S	S
Mirror - Bevelled Mirror Behind Range and on Fridge Wall	S	S	S	S	S
Oven - 21" LP Glass Door Oven	0	0	0	0	0
Pantry - Half Height Pantry above Washer/Dryer Cabinet	-	0	-	-	-

09 Refrigerator - 4 Door 12 cu. Ft. c/w Ice Maker - LP/Electric, Cherry Finished Framed Raised Panel Inserts w/ Ignition Lock	-	-	0	0	0
09 Refrigerator - Dometic LP/Electric 9 Cu. Ft. w/ Temp Control w/ Cherry Framed Raised Panel Inserts	S	S	S	S	S

STANDARDS AND OPTIONS

LAVATORY	A3202FB	A3509FB	A3710FB	A3711FWB	A3712FGB
Door - Shower/Tub Door (S - Sliding, H - Hinged)	-	S	H	H	H
Flooring - High Pressure Laminate Floor in Lavatory	S	S	S	S	S
09 Shower - Round Shower w/Oil Rubbed Bronze Faucets and Shower Doors	S	-	-	-	-
Shower Stall / Tub - Fiberglass Enclosed	-	-	S	S	S
Shower Stall / Tub - High Gloss Color Coordinated Acrylic	-	S	-	-	-
09 Sink - Acrylic Sink in Lavatory	S	S	-	-	-
09 Sink - Porcelain Sink in Lavatory	-	-	S	S	S
Skylight - Residential Dual Pane in Shower	-	S	-	-	-
Skylight - Residential Dual Pane Neo Angle in Shower	S	-	S	S	S
Toilet - Sealand 510 - China - Foot Flush with Sprayer	S	S	S	S	S

BEDROOM	A3202FB	A3509FB	A3710FB	A3711FWB	A3712FGB
Bedspread - Decorative Bedspread with Throw pillows w/ Decorative Throw	S	S	S	S	S
Fireplace with Cocktail Chair and Flip up Computer Table	-	-	-	S	-
09 Mattress - Residential Quality King (70" x 80") Deluxe Pillow Top	0	0	0	0	0
Mattress - Residential Quality Queen (60" x 80")	S	S	S	S	S
Pillows - 2 Sleeping Pillows in Bedroom	S	S	S	S	S
Shades - Day/Night Pleated c/w Blackout	S	S	S	S	S
Stool - for Make up Table	0	0	0	-	0
Storage - Easy Under Bed Storage c/w Gas Struts	S	S	S	S	S

ENTERTAINMENT	A3202FB	A3509FB	A3710FB	A3711FWB	A3712FGB
CD Changer - 10 Stack	0	0	0	0	0
Satellite Dish - Explorer Dish for Star Choice - Automatic Acquisition	0	0	0	0	0
Satellite Dish - High Definition Satellite Dish (HD on Living Area TV Only) - Motosat	0	0	0	0	0
Satellite Dish - Motosat 18" Executive w/ DVB Automatic Acquisition and Identification	0	0	0	0	0
Satellite Dish - Winegard with Electronic Elevation Sensor	0	0	0	0	0
Satellite Radio Preview - including Satellite Antenna (Subscription not Included)	0	0	0	0	0
Stereo - AM/FM CD and DVD Stereo in Bedroom with Alarm Clock	S	S	S	S	S
Stereo - AM/FM/CD/MP3 Sirius Ready Player in Dash w/ Wireless Remote and Auxiliary Input (Mid Model Year)	S	S	S	S	S
Stereo - Exterior AM/FM - CD Stereo with Shielded Speakers	0	0	0	0	0
Stereo - Home Theatre System - 5 Channel Stereo with Subwoofer	S	S	S	S	S
TV - AC 19" LCD Flat Screen Color Stereo c/w Remote in Bedroom	S	S	S	S	S
TV - AC 26" LCD in Hutch Behind Main Slide Out	-	-	-	-	S
09 TV - AC 32" LCD Flat Screen Color Stereo c/w Remote in Front Overhead Cabinet	S	S	S	S	-
TV Antenna - Roof Top Retractable Antenna c/w Booster	S	S	S	S	S

HEATING VENTILATING AND AIR CONDITIONING	A3202FB	A3509FB	A3710FB	A3711FWB	A3712FGB
Air Conditioner - Centrally Ducted 13,500 BTU w/ Heat Strip and Remote Return Air	S	S	-	-	-
Air Conditioner - Dual Ducted 2 x 13,500 BTU w/ Heat Strip and Remote Return Air	0	0	S	S	S
Air Conditioner - Ducted Roof 15,000 BTU w/ Heat Strip and Remote Return Air	0	0	-	-	-
Fan - Fantastic Non Reversible In Lavatory w/ Wall Switch	S	S	S	S	S
Fan - Fantastic Non Reversible In Toilet Room w/ Wall Switch	-	-	S	S	S
Fan - Reversible Thermostatically Controlled Fantastic Fan in Bedroom w/ Wall Switch	S	S	S	S	S
Furnace - 2 x 25,000 BTU Furnace c/w Electronic Ignition	S	S	S	S	S
Heater - Rear Auxiliary Automotive with Electric Control Valve	S	S	S	S	S

ELECTRICAL	A3202FB	A3509FB	A3710FB	A3711FWB	A3712FGB
2000 Watt Inverter W/ 100 Amp Battery Charger ILO Converter and 600 W Inverter	0	0	0	0	0
30 Amp Electrical Service with EMS	S	S	-	-	-
50 Amp Electrical Service with EMS	-	-	S	S	S
Batteries - Dual 6 Volt Deep Cycle Auxiliary on Slide Out Tray	S	S	S	S	S
Bi-Directional Isolator Relay Delay (BIRD) Battery Charging	S	S	S	S	S

ELECTRICAL (con't)	A3202FB	A3509FB	A3710FB	A3711FWB	A3712FGB
Converter - 55 Amp - 120/12 Volt c/w Charger	S	S	S	S	S
Generator - 5.5 KW Onan Marquis Gold w/ Hour Meter Mounted in Convenience Center w/ Auto Changeover Switch	S	S	S	S	S
Inverter - 600 Watt (For Front TV, Bedroom TV, Home Theatre, Sat Receiver)	S	S	S	S	S
Pre-wire - Power Awning	S	S	S	S	S
Pre-wire - Solar Panel	S	S	S	S	S
Switch - Electronic Battery Disconnect (Coach Batteries)	S	S	S	S	S
Telephone & Cable TV Hookup - Exterior	S	S	S	S	S

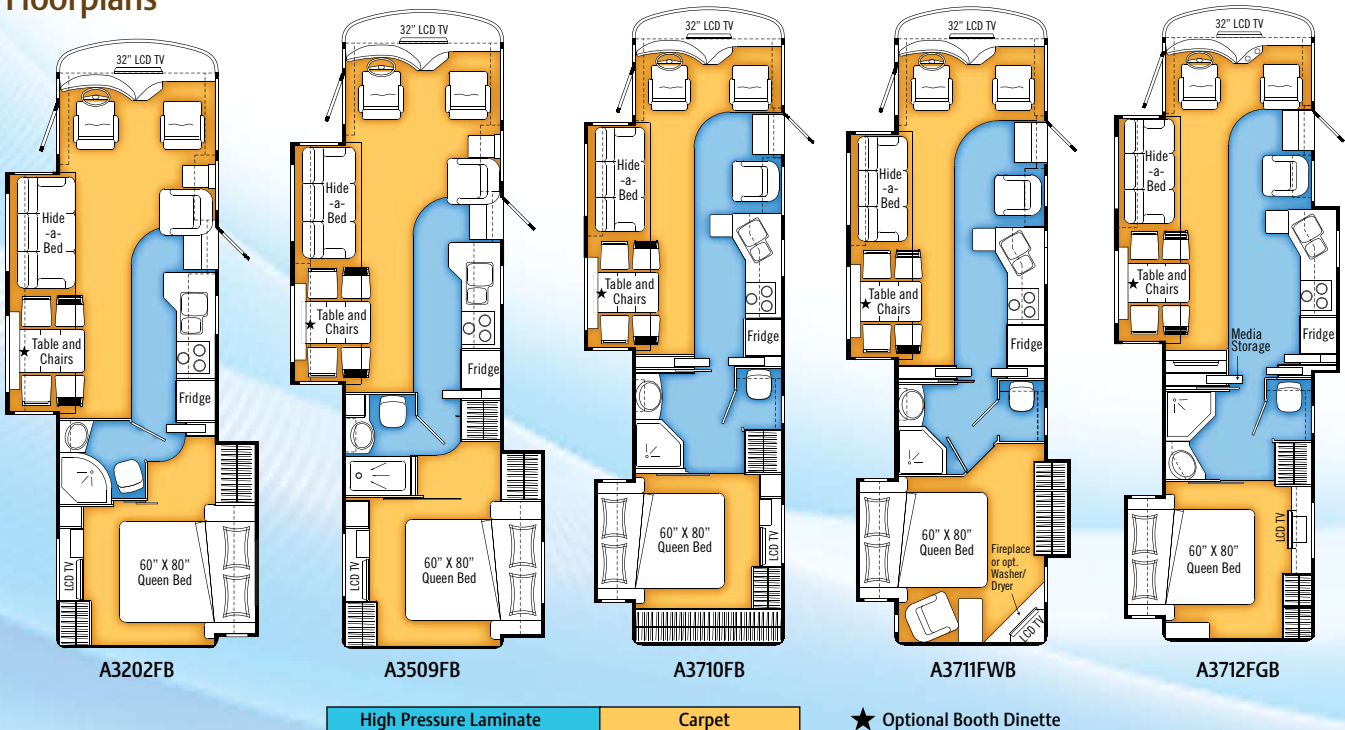
PLUMBING AND LP SYSTEMS	A3202FB	A3509FB	A3710FB	A3711FWB	A3712FGB
Black Tank Flush w/ Atmospheric Break	S	S	S	S	S
Exterior Shower	S	S	S	S	S
Holding Tanks - Enclosed, Insulated and Dual Heated Waste Tanks	S	S	S	S	S
Roughed in Plumbing for Washer Dryer	-	S	S	S	S
Switch - 3 Way Water Pump Switch	S	S	S	S	S
Systems Monitor located in Convenience Center	S	S	S	S	S
Valve - Water Heater Bypass	S	S	S	S	S
Water Filter - Whole House Water Filter in Utility Module	S	S	S	S	S
Water Heater - Electronic Ignition LP Gas/Electric/Motoraid 10 Gallon	-	-	S	S	S
Water Heater - Electronic Ignition LP Gas/Electric/Motoraid 9 Gallon Equivalent	S	S	-	-	-
Water Tank - Enclosed, Insulated and Dual Heated	S	S	S	S	S
Water Tank Fill and Bleach Port	S	S	S	S	S
Winterization System c/w Antifreeze Pickup	S	S	S	S	S

SYSTEMS	A3202FB	A3509FB	A3710FB	A3711FWB	A3712FGB
Central Vacuum with Outlet in Baggage Compartment	S	S	S	S	S
Washer/Dryer (vented)	-	0	0	-	0
Washer/Dryer (vented) - ILO Fireplace in Bedroom	-	-	-	0	-

AWNING PACKAGES	A3202FB	A3509FB	A3710FB	A3711FWB	A3712FGB
Manual Awning Package Includes:	S	S	S	S	S
• Weathershield Equipped A&E 2 Step Patio Awning - Acrylic w/ Black Hardware (Length Shown)	14	15	19	19	19
• Weathershield Equipped A&E Elite Slide Topper (Number of Awnings Shown)	2	2	2	3	2
Power Awning Package Includes:	0	0	0	0	0
• Weathershield Equipped A&E Weatherpro - Acrylic w/ Black Hardware (Length Shown)	14	15	19	19	19
• Weathershield Equipped A&E Elite Slide Topper w/ Black Hardware (Number of Awnings Shown)	2	2	2	3	2
Awning - Weathershield Equipped A&E Elite Window Awnings - Black	3	3	2	1	2

CERTIFICATION	A3202FB	A3509FB	A3710FB	A3711FWB	A3712FGB
Factory PDI.	0	0	0	0	0
CUSTOMER VALUE PACKAGE (Mandatory Option)					
CB Antenna - Includes Coax Lead in under Dash	0	0	0	0	0
Fan - Thermostatically Controlled Fantastic Fan in Living Area w/ Wall Switch	0	0	0	0	0
Fans - Chrome Cockpit Ventilating with Dash Switch	0	0	0	0	0
Lighting - Fluorescent Lighting Upgrade in Aisle and Halogen Upgrade Under Cabinets over Couch and Bed	0	0	0	0	0
Mattress - Upgrade	0	0	0	0	0
Pillows - Coordinated Pillows for Living Area	0	0	0	0	0
Prewire - Satellite Dish (with 12V Power, Ground, RG-6 Coax and Fish Wire)	0	0	0	0	0
Rust Protection	0	0	0	0	0
Sun Visor - Power Driver and Passenger Sun Visor w/ Switch on Dash	0	0	0	0	0

Floorplans

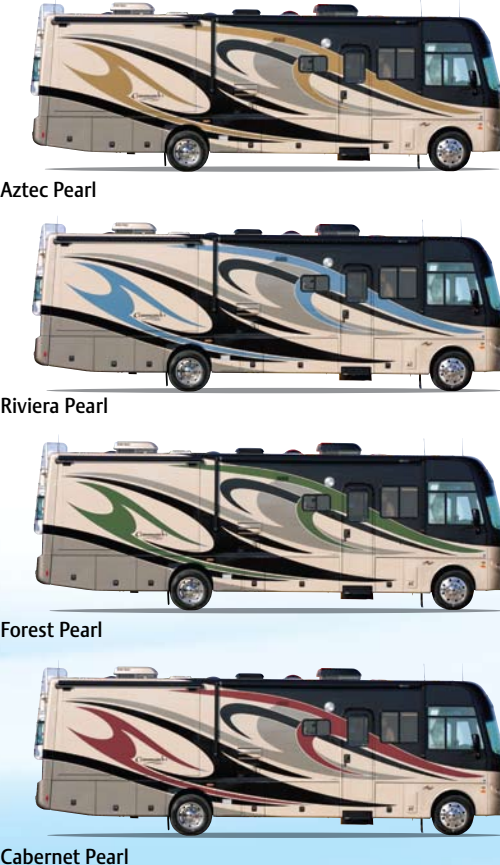


GVWR (GROSS VEHICLE WEIGHT RATING)
The maximum permissible weight of this motorhome. The GVWR is equal to or greater than the sum of the unloaded vehicle weight (UVW) plus the net carrying capacity (NCC).

UVW (UNLOADED VEHICLE WEIGHT)
The weight of the motorhome as built at the factory. The UVW does not include cargo, fresh water, LP gas, factory or dealer installed accessories.

NCC (NET CARRYING CAPACITY)
The maximum weight of personal belongings, food, fresh water, LP gas, tools, tongue weight of towed vehicle, factory and dealer installed accessories, etc., that can be carried by this motorhome. (NCC is equal to or less than GVWR minus UVW.) Please see your dealer for weights of factory installed options.

Exterior Options



Two Year Limited Warranty Triple E is proud to offer a two year limited warranty on structure as well as most major components. Please see your dealer for further details.

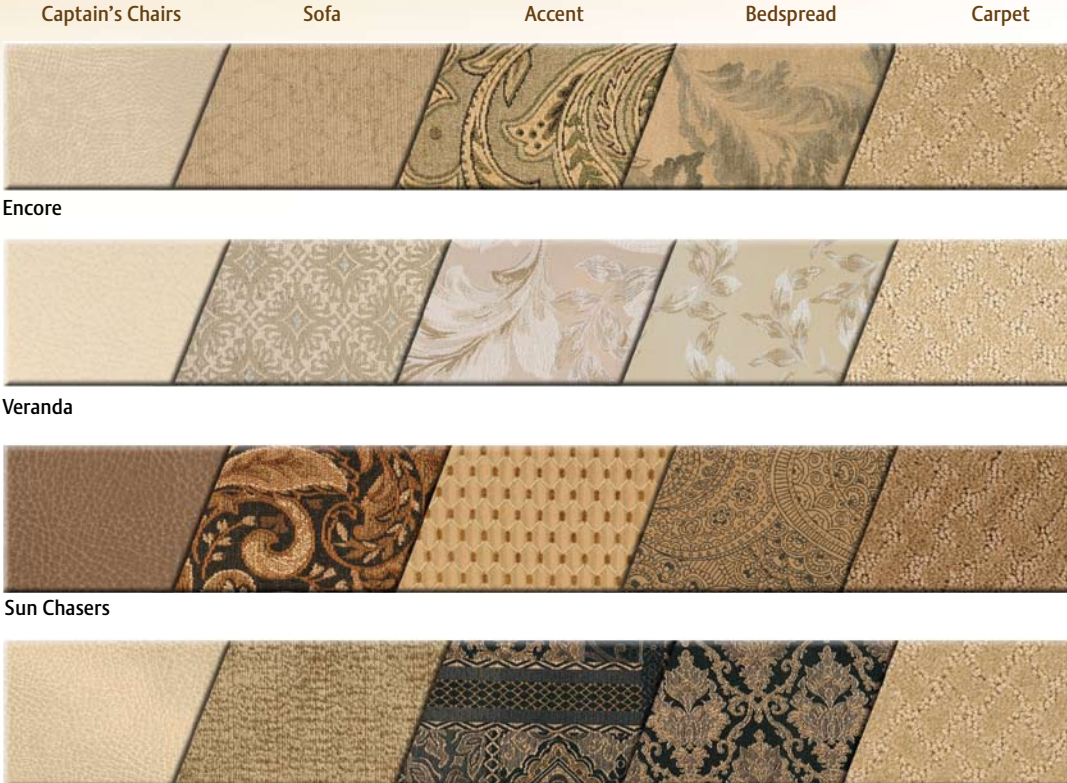
Triple E Recreational Vehicles P.O. Box 1230, Winkler, Manitoba, Canada R6W 4C4 Telephone: (204) 325-4361 Fax: (204) 325-5241

Triple E Recreational Vehicles are designed and built to meet or surpass CSA-RVIA standards covering electrical services, gas services, plumbing services and vehicular safety. Commander motorhomes exceed 96" in width. In some states, 96" is the maximum width of vehicles travelling some or all state roads. It is the responsibility of the owner to be familiar with the road usage laws of the states in which you travel. Product improvement is a continuing process at Triple E Recreational Vehicles. We reserve the right to change specifications on any or all products without prior notice; errors and omissions excepted. Triple E Recreational Vehicles is under no obligation to undertake modification to units manufactured prior to changes on specifications. Brochure pictures may be shown with optional equipment. Colours may not be exactly as shown due to the printing process. Please see your dealer for specific colours.

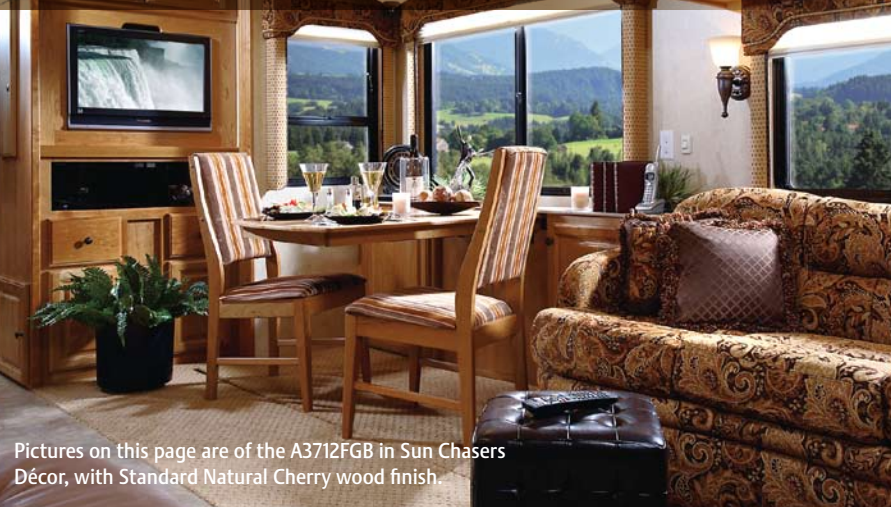
www.tripleerv.com



Décor



The solid wood extendable cantilevered wall mount table is the centerpiece of the dining area, complete with two solid wood chairs and two folding chairs. The air coil hide-a-bed serves as comfy sofa by day, cozy bed for guests by night. You choose from four distinctive decors to personalize the space.



Entertaining guests? Just draw the drapes, turn the ultra-leather captain's chairs and you're in the midst of a warm, elegant living area which features an overhead 32" LCD TV (except A3712FGB), home theater and even an optional refreshment center.

The optional washer/dryer set is surrounded by storage, conveniently located close to the bathroom.

Commander 2009

Let the Good Times Roll



COMMANDER 2009

