

2009 AMERICAN HERITAGE





2009 AMERICAN HERITAGE.

Bold. Lush. Exhilarating. Consider the 2009 American Heritage a fine wine – made to please the most sophisticated palettes. From cockpit to cabin, every last detail is meant to be savored. Feast your eyes on dazzling new Patriot and Camelot graphics packages, painted in rich reds and sparkling silvers. Enjoy all-new designer-selected

woods and fabrics, in the most traditional styles. Feel the powerful, 500 or optional 650 horsepower Cummins® engine carry you from departure to destination. That's just skimming the surface. With the 2009 Heritage, you'll find something new to love every day you own it. Uncork the excitement.







American Heritage 45B Shown in Linen Chiffon interior décor with Imperial Cabernet cabinetry.



2009 AMERICAN HERITAGE







**WHO SAYS YOU
CAN'T HAVE IT ALL?**

Choosing American Heritage means never having to compromise style for substance. Inside the coach, solid wood gives everything from cabinets (available in flat panel and raised panel design) to ceilings breathtaking beauty. Wonderfully detailed crown molding next to hand-picked light fixtures only heightens the elegance. But there's more to the Heritage

experience than just good looks. Theater-quality entertainment is par for the course. You'll enjoy deluxe electronics like a 46" Sony® LCD TV and a Bose® Entertainment System. You'll watch every movie and show while lounging on plush sofas, in your choice of attractive interior decors. It's all the finer things in life – in one place.





**REFINED STYLE MEETS
OPULENT FUNCTIONALITY.**

Whether you're a master chef or a master of the microwave, the Heritage galley has what you need. Fix your meals on exquisite, polished granite countertops – a perfect match to the mosaic tile inlays in the kitchen's backsplash. Achieve gourmet results with an easy to clean, electric cook

top. Store fresh food for days with a side-by-side, residential sized refrigerator. When you're finished cooking, set the scene at your convenient dinette with extra wide, 18" top surface. With a galley this incredible, you'll make more than meals – you'll make memories.



2009 AMERICAN HERITAGE











BOTH ENCHANTMENT AND ESCAPE.

It's the sanctuary you've always wanted, and it's all yours. Imagine the luxury of a glass-enclosed shower, complete with mosaic tile inlay and polished porcelain tile flooring. Featuring a massaging, hand-held, Kohler® showerhead, it's the ultimate in relaxation. Adjacent is the vanity, which welcomes you with ample

drawer storage, gleaming chrome hardware and plenty of room to get ready. Then, of course, there's the bedroom. End the night on a regal Select Comfort king-size mattress (optional) watching your crystal-clear Sony® LCD screen and listening to a Bose® 3-2-1 Home Theater System. Simply magic.





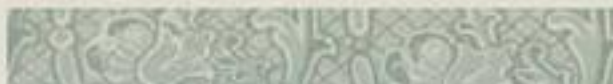
2009 AMERICAN HERITAGE



**YOU'VE REACHED THE
TOP OF YOUR GAME.
NOW IT'S TIME TO PLAY.**

Stepping into the cockpit of the 2009 Heritage is like stepping into the winner's circle. With a low profile, ergonomically designed dash, you'll be in command. And with the ingenious Navion® R5000 system on your side, you'll be in control, too. The all-in-one R5000 gives you an AM/FM radio with CD player, convenient navigation system, mp3 compatibility and

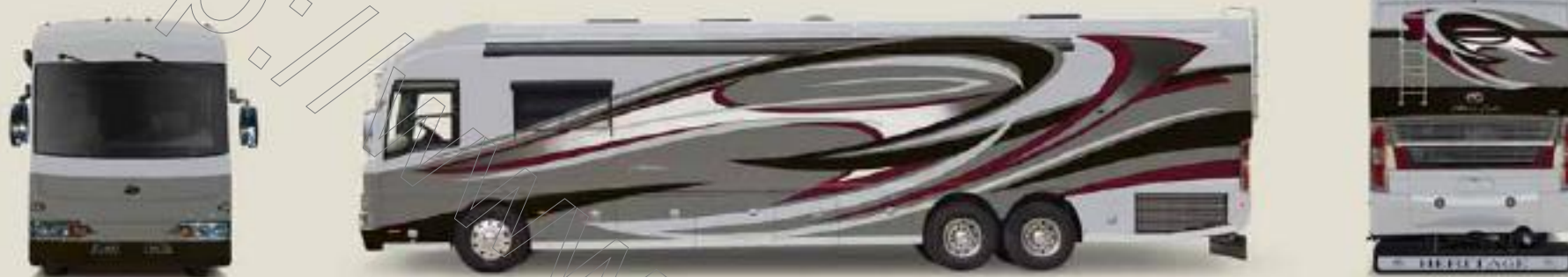
a rear vision monitor. Plus, smart, side view cameras are integrated into the rear view mirrors, for maximum safety in every situation. And comfort is key. Besides a fully adjustable, leather captain's seat, dual-dash air conditioners with separate controls keep you and your passenger cool for miles. We've thought of everything - so you can sit back and enjoy the ride.





EXTERIOR GRAPHICS*

Silver Mist in Patriot Graphics



Cashmere Blaze in Patriot Graphics



Sandrift in Patriot Graphics



* Not all exterior colors or graphics are shown. All colors are available in Camelot and Patriot graphics schemes. See your American Coach dealer or visit our website at www.AmericanCoach.com to view all graphic and color choices.

INTERIOR DÉCOR†

Mint Chocolate



Linen Chiffon



Platinum Parchment



Midnight Sunset



Burnished Sandstone



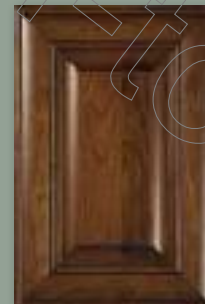
SOLID WOOD CABINETRY CHOICES

TRADITIONAL RAISED PANEL

Bavarian Crème
Glaze



Imperial
Cabernet Glaze

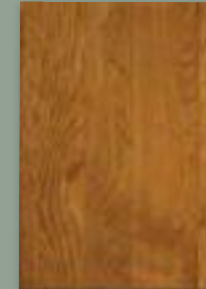


Autumn Desert
Breeze Glaze



HIGH GLOSS FINISH

High Gloss Cherry



CABINET HARDWARE

Satin Nickel



Weathered Nickel



Nickel Plated Matte



† Interior décors and/or woods may be subject to change. Printed fabric samples above are representations of actual fabrics and may be limited due to standard printing technology.

** Matching cabinet hardware has been carefully coordinated and tied to specific interior décor schemes and are not separate options. Please check with your American Coach Dealer for specifics.



OUR LEGACY CONTINUES.

For years, American Coach has stood behind the same core philosophy. We don't just simply build to industry standards alone, we also build to customers standards. Our team refuses to settle for sub-standard parts or low-quality construction. No short cuts. No cheap

materials. No substitutions. Just painstaking attention to detail by the best and most dedicated craftsmen in RV manufacturing. The end result of our efforts is a coach of strength, integrity and overwhelming beauty. One that we're just as proud to stand behind as you will be to own.

Coach-Net®

Now all 2009 American Coach products come standard with one year of Coach-Net Service. 24/7, 365 days a year service is just a phone call away. See your American Coach dealer for details.



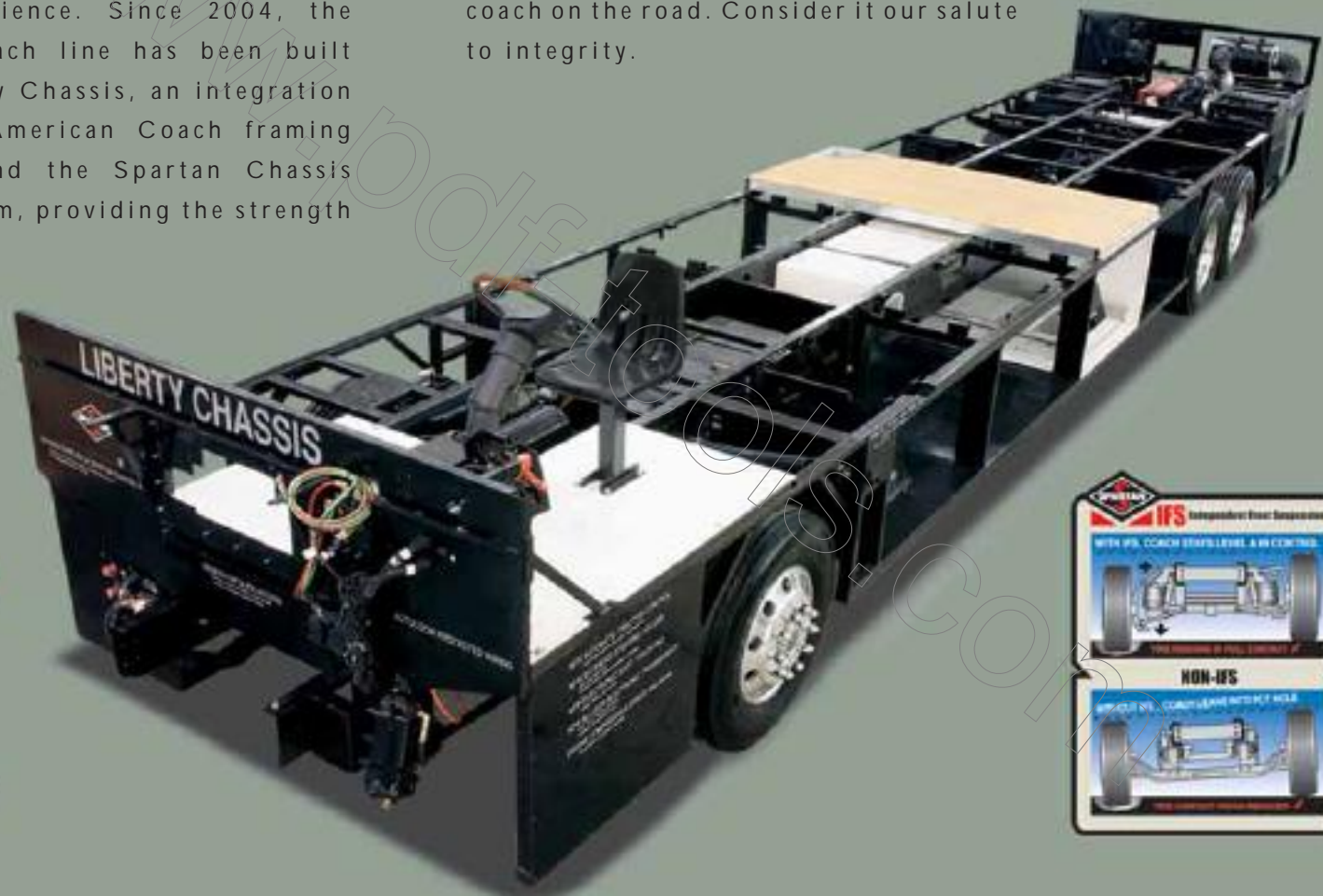
THE LIBERTY CHASSIS.

2009 AMERICAN HERITAGE



Technology this groundbreaking requires an expert team. That's why American Coach and Spartan decided to join forces - to create a rugged, modular chassis system for an incomparable driving experience. Since 2004, the American Coach line has been built on the Liberty Chassis, an integration of superior American Coach framing technology and the Spartan Chassis modular system, providing the strength

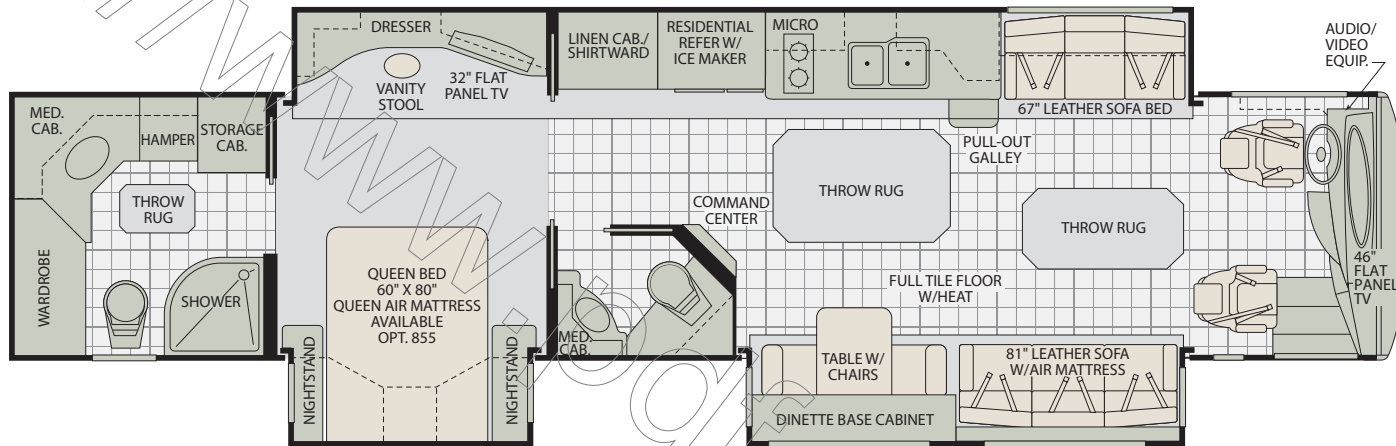
and structure for a ride unrivaled in the luxury coach industry. So even coupled with a high-performance diesel engine, you'll enjoy the lowest levels of vibration for the smoothest riding coach on the road. Consider it our salute to integrity.



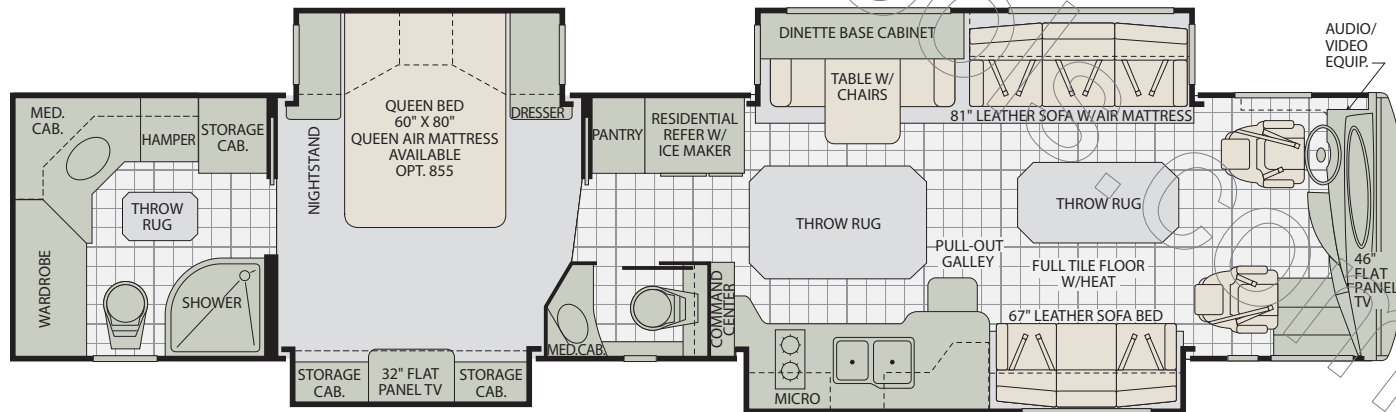


FLOOR PLANS

45 B



45 E



WEIGHTS AND MEASUREMENTS

	500 HP		650 HP	
WEIGHTS	45B	45E	45B	45E
GVWR (lbs) ¹	46,600	46,600	50,600	50,600
Front GAWR (lbs) ²	16,600	16,600	16,600	16,600
Rear GAWR (lbs) ²	20,000	20,000	20,000	20,000
Tag Axle GAWR (lbs) ²	10,000	10,000	14,000	14,000
GCWR (lbs) ³	61,600	61,600	65,600	65,600
Hitch Rating Weight (lbs) [†]	15,000	15,000	15,000	15,000
Tongue Weight (lbs) [†]	1,500	1,500	1,500	1,500
DIMENSIONS & CAPACITIES	45B	45E	45B	45E
Wheelbase	304"	304"	304"	304"
Overall Length ⁴	44' 11½"	44' 11½"	44' 11½"	44' 11½"
Overall Height (w/Sat Dome)	13' ¼"	13' ¼"	13' ¼"	13' ¼"
Overall Height (w/AC)	12' 10"	12' 10"	12' 10"	12' 10"
Overall Width (maximum) ^{5,6}	102"	102"	102"	102"
Interior Height (maximum)	84"	84"	84"	84"
Interior Width (maximum)	96"	96"	96"	96"
Fresh Water Holding Tank (gal)	90	120	90	120
Grey Water Holding Tank (gal)	100	100	100	100
Black Water Holding Tank (gal)	60	60	60	60
Appliance Propane Tank (gal) (WC) ⁷	30.7	30.7	30.7	30.7
Fuel Capacity (gal)	150	150	150	150
Awnings - Girard Front	18'	18'	18'	18'
Awnings - Girard Rear	18'	18'	18'	18'

Liquid Weight Reference: Water (gal) = (8.3 lbs/3.8 kgs) Fuel (gal) = (7.1 lbs/3.2 kgs) Propane (gal) = (4.2 lbs/1.9 kgs)

Metric Conversion: Multiply pounds x 0.453 to obtain kilograms. Multiply gallons x 3.785 to obtain liters. Multiply liters x 61 to obtain cubic inches.

CHASSIS - CUMMINS® 500

Frame: Liberty Chassis

Engine: ISM 500 HP, 10.8L

Torque: 1550 lb-ft @ 1300 RPM

Transmission: Allison® "Gen-4" 4000 MH, 6 Speed w/Electronic Shifter

Alternator Amps: 270 Amp, Leece Neville

Tires: 315/80R 22.5 Michelin® Radial

CHASSIS - CUMMINS® 650

Frame: Liberty Chassis

Engine: ISX 650 HP, 14.9L

Torque: 1950 lb-ft @ 1300 RPM

Transmission: Allison® "Gen-4" 4000 MH, 6 Speed w/Electronic Shifter

Alternator Amps: 270 Amp, Leece Neville

Tires: 315/80R 22.5 Michelin® Radial

N/A = Not Applicable

* UVW and OCCC are found on the label containing the federal certification tag in each RV.

† The chassis manufacturer recommends the installation of a supplemental brake control system to activate the brakes on the vehicle or trailer you are towing. Hitch receiver ratings expressed are maximum for the hitch receiver installed and may require the purchase of additional equipment that is dependant on the weight of the towed load. Consult with hitch receiver manufacturer for further information.

IMPORTANT — PLEASE READ: Product information, photography and illustrations included in this publication were as accurate as possible at the time of printing. For further product information and changes, please visit our website at www.AmericanCoach.com or contact your local American Coach dealer. Prices, materials, design and specifications are subject to change without notice. All weights, fuel, liquid capacities and dimensions are approximate. American Coach has designed its recreational vehicles to provide a variety of uses for its customers. Each vehicle features optimal seating, sleeping, storage and fluid capacities. The user is responsible for selecting the proper combination of loads (i.e. occupants, equipment, fluids, cargo, etc.) to ensure that the vehicle's capacities are not exceeded.

- GVWR (Gross Vehicle Weight Rating) is the maximum permissible weight of this fully loaded motor home. The GVWR is equal to or greater than the sum of the (UVW) unloaded vehicle weight plus the (OCCC) occupant cargo carrying capacity*.
- GAWR (Gross Axle Weight Rating) is the maximum permissible loaded weight a specific axle is designed to carry.
- GCWR (Gross Combined Weight Rating) is the value specified by the motor home manufacturer as the maximum allowable loaded weight of this motor home with its towed vehicle. Towing and braking capacities may be different. Refer to American Coach and chassis manufacturer's manuals for complete information.
- Length measured from front bumper to rear bumper (excludes accessories).
- Excludes safety equipment and awnings.
- Motor homes feature a body-width over 96" which will restrict your access to certain roads. Before purchasing, you should research any state and/or province road laws which may affect your usage.
- Tank manufacturer's listed water capacity (WC). Actual propane capacity is 80% of water listing as required by the safety code.

AMERICAN HERITAGE | STANDARD AND OPTIONAL FEATURES

INTERIOR AMENITIES

GENERAL AMENITIES

- Hand Laid Wallpaper
- Outlet and Telephone Jack (Multiple Locations)
- Decorative Throw Pillows
- Masland® Carpeting
- Decorative Wood Window Treatments
- Accent Rope Lighting
- Decorative Wood Trimmed Fan-Tastic® Rain Sensor, Power Roof Vents w/3-Speed Fan (3)
- Interior MultiPlex "Power Management Plus System"
- TV Cable Ready
- Solid Wood Face Framed Cabinetry and Moldings
- Solid Wood Cabinet Doors
- Lined Cabinet Interior Bottoms and Shelves
- Decorative Ceiling and Air Plenum
- Flush Bolt Latch Decorative Hardware on Pocket Doors
- Polished Porcelain Tile Floor w/ Décor Accents at Entry, Galley and Bathroom

OPTIONAL

- 4 Premium Wood Choices w/Raised Panel or High Gloss Finish and 5 Fabric Decors Choices
- Premium Glaze Wood Finish
- Custom Interior Request
- Factory V.I.P. Delivery
- Canadian Standards Build

DRIVER CONVENIENCE

- Navion®/RS000 Information and Entertainment Center; AM, FM, Single CD, MP3, Camera Monitor w/One Way Audio
- Hardwood Dash Cabinetry w/Corian® Top and Storage Drawers
- Villa® 8 Way Power Driver Seat w/Heat, Power Lumbar, Adjustable Arms and Massage (Leather)
- Villa® 8-Way Power Passenger Seat with Heat, Power Lumbar, Adjustable Arms, Massage and Electric Footrest (Leather)
- Driver Seat Position Memory, Seat and Steering
- Sirius Satellite Radio® and 6 Month Subscription
- Sony® Rear View Camera
- Video Valet w/3 Integrated Cameras
- Cruise Control
- I.C.C. Light Switch
- Top Mounted Intermittent Windshield Wiper System w/Wet Arm
- Smart Wheel, Leather and Burl Wood Trim, Electronic Tilt-Tip-Telescope
- Power Driver Window
- One Piece Windshield Bonded to Steel
- Powered Windshield Privacy Curtain (Cellular)
- Full Coverage Power Sun Visors
- Windshield Washer Bottle, 2 Gallon Reservoir
- Driver and Passenger Drink Holder
- Driver and Passenger Map Reading Lights
- Pressure Pro® Active Monitoring System for Tire Pressure
- Halogen Head Lamps
- Denso® Dash Climate Control System (Dual)
- Defrost Control System

- Adjustable Brake and Throttle Pedals
- Compass and Exterior Temperature Gauge
- Garmin® Navigation System
- Low Profile Automotive Style Dash Instrumentation, Back Lit Gages and Switches
- Chassis Monitoring System
- Tag Axle Dump Switch
- Keyless Entry Door Access w/Key Fob
- Auxiliary Fog Lamps
- Auxiliary Start Switch
- CB Radio Ready (Power and Antenna)
- Hadley® Air Horns
- Low Level Washer Fluid Indicator
- Multiple Auxiliary 12-Volt Dash Receptacles

OPTIONAL

- Sony® Passenger GPS Monitor

LIVING ROOM

- Power Step Well Cover
- Entry Step Switch at Entry Wall
- Lighted Step Well Area
- Large Passenger Window
- Full Tile Polished Porcelain Floor w/Tile Accents
- 12V Halogen Ceiling Lighting and Reading Lights
- Centralized Audio-Electronics
- Hardwood Front TV Overhead Cabinetry
- Raised Panel Cabinet Doors or Smooth High Gloss Finish Doors
- Centralized Command Center
- Outlet at Dinette
- Automatic Generator Start System
- Inverter and Battery Monitor
- Area Rugs (Select Sizes)

- Polished Granite Dinette Table Top
- Power Privacy View Style Shades - Living, Dinette and Bedroom Areas (12V)
- Raised Panel Cabinet Doors (w/Traditional Wood Choice)

OPTIONAL

- Interior LED Décor Accent Lighting Package

BATHROOM

- Polished Mystera® Lavvy Countertop w/Solid Surface Sink and Residential Kohler® Faucet
- Brushed Nickel Finish Bath Accessories
- Medicine Cabinet
- LED Floor Lights
- Solid Surface Shower Pan
- Skylight in Shower
- Corian® Shower Caddy
- Kohler® Residential Style Fixed Shower Head
- Residential Hand Held Shower Head
- Clear Glass Shower Enclosure with Satin Nickel Trim

- Micro Mini Blind (Bathroom Window)
- Residential China Bowl Vacuum Flush Toilets
- Toilet Paper Dispenser, Towel Rings, and Robe Hook

GALLEY

- Polished Granite Galley Countertops and Sink Covers
- Solid Surface Double Bowl Galley Sink
- Porcelain Tile Backsplash w/Decorative and Glassstone Mosaic Inserts
- Recessed 2 Burner Cook Top
- Solid Hardwood Drawer Fronts
- Roller Bearing Drawer Guides, Full Extension
- Adjustable Shelves
- Cabinet Storage for Sink and Range Covers
- Task Halogen Lighting
- Kohler® High Rise Galley Faucet w/Pullout Sprayer
- Silverware Tray

OPTIONAL

- Electric Cook Top/LP Tank Delete
- Electric Cook Top/Dishwasher/LP Tank Delete
- Modified Galley Extended Sofa (Select Models)

BEDROOM

- Video Valet Bedroom Monitor
- Virtual Window, Security Camera (Select Models)
- Solid Wood 6 Panel Bath and Bedroom Doors
- Solid Wood Framed Headboard w/Padded Fabric Accent
- Quilted Bedspread
- Queen Innerspring Pillow Top Mattress (60" x 80")
- Lift Up Bed w/Under Bed Storage
- Polished Mystera® Counter and Nightstand Tops
- Overhead Cabinet Above the Bed
- Wall Sconce Light Fixtures
- 30" Deep Bedroom Slides
- Power Privacy View Style Shades
- Remote Generator Start Switch
- Second Phone Jack
- Cedar Lined Wardrobe
- Wardrobe Lighting
- Recessed Wardrobe Light
- Full Length Rear Wardrobe
- Recessed Bedroom Ceiling Fan

- Key Actuated Hidden Safe
- Shoe Storage in Wardrobe Closet

OPTIONAL

- King Bed w/Pillow Top (72" x 80")
- Select Comfort Queen Air Mattress w/2 Remotes
- Select Comfort King Air Mattress w/2 Remotes
- Polished Granite Counter and Nightstand Tops (Includes Lavvy)

FURNITURE

- Villa Furniture Package (Loveseat, Sleeper Sofa, Driver/Passenger Seats)
- Decorative Free Standing Dinette Chairs w/Wood/Fabric and Metal Accents
- Decorative Free Standing Dinette and Folding Chairs Not Available with Face to Face Dinette Ensemble
- Wood and Fabric Folding Guest Chairs
- Dinette w/Base Cabinet Storage

OPTIONAL

- Dinette w/Base Cabinet Storage, File Storage and Keyboard Tray
- Facing Booth Dinette

APPLIANCES

LIVING ROOM

- Bose® Lifestyle 35 Home Entertainment System
- Sony® 46" LCD HDTV
- TracVision® R6 Series, "In-Motion" HDTV Compatible, Domed Digital Satellite System w/Electronic Dew Shield

GALLEY

- Residential Refrigerator w/Icemaker
- GE Advantium® Over the Range Convection Microwave Oven

- Central Vacuum System w/Accessory Kit
- Insta-Hot: Hot and Cold Water Dispenser

OPTIONAL

- Recessed 3 Burner Range and Oven
- Dishwasher w/Cabinet Wood Front

BEDROOM

- Direct TV® HD, Digital Satellite Receiver

- Bose® 3-2-1 Home Theater System
- Sony® 32" LCD HDTV

OPTIONAL

- Sony® 40" LCD HDTV

GENERAL

- Washer/Dryer Ready w/Shelves

OPTIONAL

- Combination Washer/Dryer (Vented)

- Stacked Washer/Dryer (Select Models)

HEATING / PLUMBING

- AquaHot Hydronic Heating 50,000 Btu 3 Heat Zones & Basement Heat w/120-Volt & Diesel Fuel Heating
- Heated Basement
- (3) 15.0M Low Profile Roof Air Conditioners
- Heat Pump on Rear AC Unit
- Heated Full Tile Floor
- Heated Tile Floor Galley and Lavvy
- Hinged Plumbing and Access Panels (Galley and Bath Areas)
- Propane (LPG) Tank
- Fresh Water Gravity Fill
- Holding Tanks w/Low Point Drain Valves
- Multi-Point Water Pump Switching

- Variable Speed Water Pump
- Whole Coach Water Filtration System
- Dual Holding Tank San-T-Flush™ System
- Waste Management System (Macerator)
- Power Dump Valve Assembly

AMERICAN HERITAGE | STANDARD AND OPTIONAL FEATURES

EXTERIOR AMENITIES

GENERAL AMENITIES

- Diamond Shield Protective Front Mask
- 2800-Watt Pure Sine Wave Inverter / Charger
- Maintenance Free (3) Absorbed Glass Mat 12- Volt Batteries (8A 8D)
- Inverter and Battery Monitor
- Surge Guard™ - Electrical System Protection (Includes Surge Protection)
- Energy Management System (50 Amp)
- Battery Disconnect Switches for House and Chassis
- Park Telephone Ready
- Hella Docking Lamps (4)
- Sliding Front Fiberglass Cap (Bottom)
- Power Generator Slide
- Utility Light-Front and Rear
- Dual Locking Fuel Fill Doors
- Fresh Water Hose (25')
- Sensa Tank Level Monitoring System (Interior and Exterior Monitor)
- Spray Wand w/Soap Dispenser and Paper Towel Holder
- Brushed Stainless Service Panels
- Chrome Headlight Bezels
- Power Water Hose Reel
- Power Cord Reel, 50 AMP
- Full Width Rear Rock Guard w/Stainless Logo Panel
- Mud Flaps, Front and Rear
- Roof Mounted Engine Air Intake
- Two Piece Aluminum Rear Ladder
- Integrated Rear Upper Fiberglass Wing Deflector
- Large Rear Engine Access Door w/Power Assist Struts
- Brushed Chrome Rear Access Grill
- Solar Charging Panel (120w)
- Power Luggage Door Locks (Select Doors) w/Remote Key Fob
- Hinge Pin Retention System (Holds Luggage Doors Open)
- Porch Light
- Keyless Entry Touch Pad / Entry Handle Integrated
- "One Key" System (Luggage and Entry Doors)
- Brushed Stainless Kick Plate Under Entry Door Available w/Stainless Steel Trim Options
- Power Double Entry Step "Bus Style"
- Electrical Outlets in Exterior Luggage Compartments
- Air Inflation Hose w/Fittings
- Convenience Light in Utility Compartment

- Chrome, Heated Side View Mirrors w/Remote Adjustment and Turn Signal Indicators Side-Vision Cameras, Integrated into Mirrors
- Folding Lawn Chairs (2) w/Basement Storage Rack

OPTIONAL

- Acrylic Shield (Deletes Standard Diamond Shield)
- 2 Exterior Graphic Design Choices - Camelot or Patriot Graphic Schemes
- Power Cord Remote (Key FOB)
- Ground Effects LED Accent Lighting Package
- Custom Exterior Paint Color Request
- 1st Full Bay 90" Slide Tray
- 1st Full Bay 36" and 54" Slide Tray
- First Bay, Basement Slide-Out Tray Package w/90" Electric Slide
- 2nd Full Bay 90" Slide Tray (Select Models)
- 2nd Full Bay 36" and 54" Slide Tray (Select Models)
- Basement Slide-Out Tray Package (1) 90" Electric Tray, (1) 54", (1) 36"
- Basement Slide-Out Tray Package (2) 90" Trays

APPLIANCES

- Power TV Antenna w/Audible "Antennae Up" Warning
- Onan® 12.5kW Quiet Diesel Generator, Power Slide-Out
- Additional 2000-Watt Pure Sine Inverter / Charger, (2) AGM Batteries (8D)
- OPTIONAL
- Exterior Entertainment Center w/Easy Swing Extension Arm and Cabinet Storage (Includes: Sony® 26" LCD TV, AM, FM, CD, DVD Player and Additional Cabinet Storage)
- Sony® 32" LCD Flat Panel TV, Sidewall Integrated w/Bose 3-2-1 Home Theater System

- Norcold® Chest Refrigerator 75 lb Freezer 12V/120V, Slide-Out Electric BBQ Grille (45E Models Only)
- Norcold® 100 lb Chest Refrigerator/ Freezer 12V/120V (Requires Tray Option)

SAFETY

- Smoke Detector/Alarm
- Carbon (CO) Monoxide Detector
- Fire Extinguisher
- Propane (LP) Leak Detector
- 3 Point Integrated Seat Belts at Driver and Passenger Seats
- Side Docking Lamps (4)
- Momentary Courtesy Lighting at Entry and Passenger Area
- Lighted Exterior Grab Handle w /Logo
- Emergency Egress Windows (2)
- Turn Signal Indicators

CONSTRUCTION

- Electro-Coated Heavy Duty Steel Framing (Liberty Chassis)
- Aluminum Framed Wall Construction
- Interlocking Aluminum Framing Connections Roof, Sidewall, Floor
- Steel Construction on Front Bulkhead
- Vacu-bond® Sidewall, Roof, Floor and Rear Wall
- Dense Bead Foam Insulation Throughout
- 5 Layer Flooring w/3" Bead Foam Insulation
- 6 Layer Roof with 5 1/4" Bead Foam Insulation (at Centerline)
- DuPont® Exterior Automotive Full Body Paint w/Sand and Buff Super Clear Finish
- Gel Coat Fiberglass Exterior Sidewalls w/No Wood Substrate
- Full Fiberglass Front and Rear Caps
- Fiberglass Front and Rear Quarter Panels
- Fiberglass Molded Front Bumper
- One-Piece Fiberglass Roof w/Radius Corners and Seamless Transition to Caps
- Insulated Aluminum Framed and Paneled Luggage Compartment Doors
- Sound Absorption Material Front, Rear and Engine
- Pebble Finished Fiberglass Basement Lining
- Heated Water and Holding Tank Compartments
- Central Electrical Panel for 120V/12V AC/DC
- TuffPEX® Plumbing System

CHASSIS / ENGINE

- Liberty Chassis (Patent Pending) w/Electro Coated Platform
- Independent Front Suspensions w/55 Degree Steering Angle
- Allison® 4000 MH, 6-Speed Automatic Transmission (w/500 HP Engines)
- Allison® 4000 MH, 6-Speed Automatic Transmission (w/650 HP Engines)
- 2 Stage Engine Brake (Lo-Hi) (Cummins® ISM SWHP)
- 3 Stage Engine Brake (Lo-Hi) (Cummins® ISM 500 HP)
- 315/80R LRH 22.5" Radial Tires
- 270 Amp Leece Neville Alternator
- Group 31 Chassis Batteries (2)
- Air Ride Suspension w/Bilstein® Shocks
- Aluminum Wheels
- Anti-Lock Brake System (ABS)
- Automatic 4-Point Dual Leveling, Air and Hydraulic
- Automatic Traction Control
- Chassis Filter Service Center
- Daytime Running Lights
- Engine Block Heater
- Full Air Brakes w/Automatic Slack Adjusters
- Tire Pressure Check Gauge (Manual)
- Trailer Hitch Receiver 15,000 lbs.†

OPTIONAL

- Spartan® K2, Modular Chassis System w/Cummins® ISM 500HP
- Spartan® K3, Modular Chassis System w/Cummins® ISX 650HP

AWNING / WINDOWS/ DOORS

- 30" Avionics Entry Door w/Dead Bolt and Pneumatic Air Latches
- Entry Screen Door w/Logo Kick Plate
- Flush Mounted and Tinted Dual Pane Windows w/Screens
- Powered Entry Door Awning Roof Mounted Girard Power Awnings w/Wind Sensor System (2 Door Side Awnings, Sofa-Galley Window Awning) (45B Models Only)
- Slide-Out Topper Awnings
- Window Graphics, Exterior Décor Matched
- Roof Mounted Girard Power Awnings w/Dual Wind Sensor Systems (2 Door Side Awnings / 2 Driver Side Awnings) (45E Models Only)

† The chassis manufacturer recommends the installation of a supplemental brake control system to activate the brakes on the vehicle or trailer you are towing. Hitch receiver ratings expressed are maximum for the hitch receiver installed and may require the purchase of additional equipment that is dependant on the weight of the towed load. Consult with hitch receiver manufacturer for further information.



For more information, visit us at www.AmericanCoach.com or call us at 800.854.1344

© 2008 Fleetwood Enterprises, Inc. Printed in the USA. Inventory Control Number AH09B1, 8/08. Model Year 2009. First Edition.

