

# AMERICAN EAGLE®



MOCHA TRUFFLE IN FLIGHTLINE GRAPHICS

## TOP FEATURES

- Quiet Air Conditioning System with Decorative Plenum
- Dual Dash Monitors
- Sony® LED TVs
- Villa® Ultraleather™ Furniture
- Frameless Windows
- Roof-Mounted Girard Awnings
- Aqua-Hot® Heating System
- Residential Refrigerator
- Power Driver Window
- Bose® Home Theater System
- High-Gloss Polished Porcelain Tile Throughout

### VICTORY GRAPHICS



CABERNET GOLD



CAFE BLANC



MOONLIGHT SAND

### FLIGHTLINE GRAPHICS



FRENCH ROAST

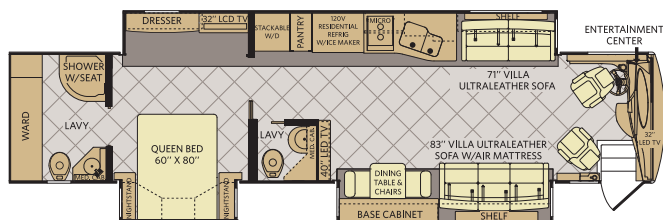


DESERT SUNSET

Not all exterior colors or graphics are shown. All colors are available in Victory and Flightline graphics schemes. See your American Coach dealer or visit our website at [www.AmericanCoach.com](http://www.AmericanCoach.com) to view all graphic and color choices.

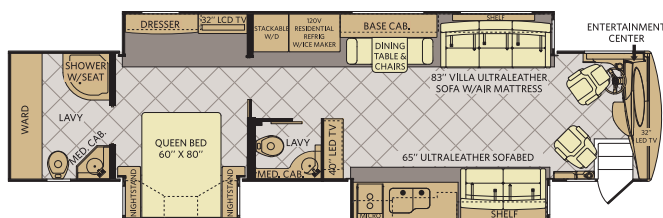
| BITTERSWEET TWILIGHT | BRONZE FUSION | SHIMMERING SAND |                                | CABINETRY |
|----------------------|---------------|-----------------|--------------------------------|-----------|
|                      |               |                 | CHERRY W/ SATIN CABERNET GLAZE |           |
|                      |               |                 | REGENCY CHERRY W/ EBONY GLAZE  |           |
|                      |               |                 | ALMOND MOCHA GLAZE             |           |

42M



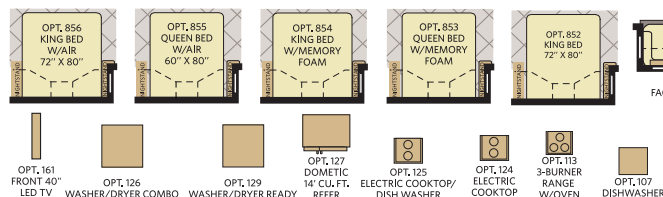
Available options: 107, 113, 124, 125, 126, 127, 129, 161, 197, 205, 828, 852, 853, 854, 855, 856, 881

42P

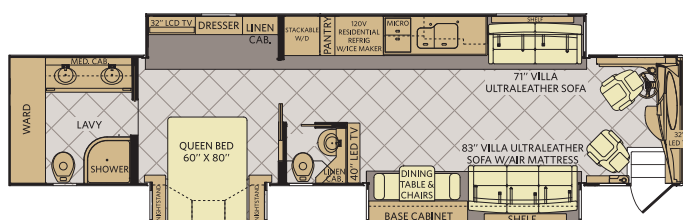


Available options: 107, 113, 124, 125, 126, 127, 129, 161, 205, 828, 852, 853, 854, 855, 856, 881

### Options

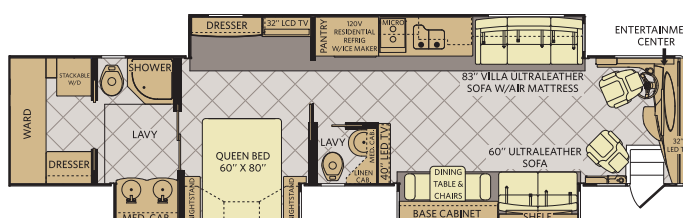


45B

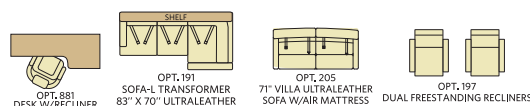


Available options: 107, 113, 124, 125, 126, 127, 129, 161, 205, 828, 852, 853, 854, 855, 856, 881

45T



Available options: 107, 124, 125, 126, 127, 129, 161, 191, 828, 852, 853, 854, 855, 856



## WEIGHTS & MEASUREMENTS

| CHASSIS                                | LIBERTY®         |                  |                  |                  |
|----------------------------------------|------------------|------------------|------------------|------------------|
| MODELS                                 | 42M/42P<br>450HP | 45B/45T<br>450HP | 45B/45T<br>500HP | 45B/45T<br>600HP |
| Wheelbase (inches)                     | 302"             | 302"             | 302"             | 302"             |
| GVWR (lbs) <sup>1</sup>                | 46,600           | 46,600           | 48,600           | 50,600           |
| Front GAWR (lbs) <sup>2</sup>          | 16,600           | 16,600           | 16,600           | 16,600           |
| Rear GAWR (lbs) <sup>2</sup>           | 20,000           | 20,000           | 20,000           | 20,000           |
| Tag Axle (lbs) <sup>2</sup>            | 10,000           | 10,000           | 12,000           | 14,000           |
| GCWR (lbs) <sup>3</sup>                | 61,600           | 61,600           | 63,600           | 65,600           |
| Hitch Rating Weight (lbs) <sup>1</sup> | 15,000           | 15,000           | 15,000           | 15,000           |
| Tongue Weight (lbs) <sup>1</sup>       | 1,500            | 1,500            | 1,500            | 1,500            |
| Fuel Capacity (gal)                    | 150              | 150              | 150              | 150              |

### LIBERTY 450 CHASSIS

**Model:** Spartan®  
**Engine:** Cummins® 8.9L ISL w/2-Stage Engine Brake  
**Torque:** 1,250 lb-ft @ 1,300 RPM  
**Transmission:** Allison® 3000 MH, 6-Speed  
 w/Electronic Shifter

**Alternator:** 200 Amp Leece-Neville  
**Horsepower:** 450HP  
**Front Tires:** 315/80R 22.5 Michelin® Radial (2)  
**Rear Tires:** 295/80R 22.5 Michelin® Radial (6)

### LIBERTY 500 CHASSIS (LATE AVAILABILITY)

**Model:** Spartan®  
**Engine:** Cummins® 11.9L ISX w/3-Stage Engine Brake  
**Torque:** 1,950 lb-ft @ 1,200 RPM  
**Transmission:** Allison® 4000 MH, 6-Speed  
 w/Electronic Shifter

**Alternator:** 200 Amp Leece-Neville  
**Horsepower:** 500HP  
**Front Tires:** 315/80R 22.5 Michelin® Radial (2)  
**Rear Tires:** 295/80R 22.5 Michelin® Radial (6)

### LIBERTY 600 CHASSIS

**Model:** Spartan®  
**Engine:** Cummins® 15.0L ISX, w/3-Stage Engine Brake  
**Torque:** 1,950 lb-ft @ 1,300 RPM  
**Transmission:** Allison® 4000 MH, 6-Speed  
 w/Electronic Shifter

**Alternator:** 200 Amp Leece-Neville  
**Horsepower:** 600HP  
**Front Tires:** 315/80R 22.5 Michelin® Radial (2)  
**Rear Tires:** 295/80R 22.5 Michelin® Radial (6)

## DIMENSIONS & CAPACITIES

| MODELS                                         | 42M       | 42P       | 45B       | 45T       |
|------------------------------------------------|-----------|-----------|-----------|-----------|
| Overall Length <sup>4</sup>                    | 42' 11.5" | 42' 11.5" | 44' 11.5" | 44' 11.5" |
| Overall Height (with A/C)                      | 13' .5"   | 13' .5"   | 13' .5"   | 13' .5"   |
| Overall Width (maximum) <sup>5,6</sup>         | 102"      | 102"      | 102"      | 102"      |
| Interior Height (maximum)                      | 84"       | 84"       | 84"       | 84"       |
| Interior Width (maximum)                       | 96"       | 96"       | 96"       | 96"       |
| Fresh Water Holding Tank (gal)                 | 100       | 100       | 100       | 100       |
| Grey Water Holding Tank (gal)                  | 60        | 60        | 60        | 60        |
| Black Water Holding Tank (gal)                 | 40        | 40        | 40        | 40        |
| Appliance Propane Tank (gal) (WC) <sup>7</sup> | 28.2      | 28.2      | 28.2      | 28.2      |

### Liquid Weight Reference:

Water (gal) = (8.3 lbs/3.8 kgs) Fuel (gal) = (6.1 lbs/2.8 kgs) Propane (gal) = (4.2 lbs/1.9 kgs)

### Metric Conversion:

Multiply pounds x 0.453 to obtain kilograms. Multiply gallons x 3.785 to obtain liters.  
 Multiply liters x 61 to obtain cubic inches.

- GVWR (Gross Vehicle Weight Rating) is the maximum permissible weight of this fully loaded motor home. The GVWR is equal to or greater than the sum of the (UVW) unloaded vehicle weight plus the (OCCC) occupant cargo-carrying capacity\*.
- GAWR (Gross Axle Weight Rating) is the maximum permissible loaded weight a specific axle is designed to carry.
- GCWR (Gross Combined Weight Rating) is the value specified by the motor home manufacturer as the maximum allowable loaded weight of this motor home with its towed vehicle. Towing and braking capacities may be different. Refer to Fleetwood and chassis manufacturer's manuals for complete information.
- Length measured from front bumper to rear bumper (excludes accessories).
- Excludes safety equipment and awnings.
- Motor homes feature a body width over 96" which will restrict your access to certain roads. Before purchasing, you should research any state and/or province road laws which may affect your usage.
- Tank manufacturer's listed water capacity (WC). Actual propane capacity is 80% of water listing as required by the safety code.

† The chassis manufacturer recommends the installation of a supplemental brake control system to activate the brakes on the vehicle or trailer you are towing. Hitch receiver ratings expressed are maximum for the hitch receiver installed and may require the purchase of additional equipment that is dependent on the weight of the towed load. Consult with hitch receiver manufacturer for further information.

\* UVW and OCCC are found on the label containing the federal certification tag in each RV.

## WHY AMERICAN COACH?



### Quality

There's no cutting corners. Skilled craftsmen build every American Coach for maximum durability and longevity.



### Trust

More people trust American Coach. After all, we've spent the last 60 years perfecting RVs, earning the loyalty of generations of RVers.



### Passion

We're truly passionate about the RV lifestyle. American Coach was founded by RV enthusiasts, and that tradition continues today.



### Safety

You've got precious cargo. So we've engineered dozens of innovative safety features into our motor homes to give you more peace of mind.



### Service

Help is nearby with 24/7 emergency roadside assistance through Coach-Net.®\*\* And when you need an upgrade or repair, you'll find American Coach dealers all across North America ready to assist you.



### Warranty

Exclusive RV ownercare warranty.  
 See your American Coach dealer for details.

## RV OWNERCARE\*

Limited one-year/15,000-mile coach warranty and three-year/45,000-mile structural warranty, whichever occurs first, and it is fully transferable for the first 12 months. RV OWNERCARE is one of the RV industry's most comprehensive programs and includes systems, appliances, components and construction, with no deductible and no service charge. RV OWNERCARE coverage is provided from a company that will be around in the future to service your needs. See your nearest American Coach dealer for a full explanation of benefits and restrictions.

## CONTACT US

To locate a dealer near you, visit our website at [www.AmericanCoach.com](http://www.AmericanCoach.com) or call 1-800-322-8216. We can also be contacted at American Coach Customer Relations, P.O. Box 1007, Decatur, IN 46733.

## AMERICAN COACH MOTOR HOME CLUBS

As an American Coach owner, you're invited to become a member of several American Coach motor home clubs. Becoming a club member is the perfect way to meet other American Coach owners who love to travel across America and share in the RV lifestyle. Visit our website at [www.AmericanCoach.com/owners\\_clubs](http://www.AmericanCoach.com/owners_clubs) to learn more and join the fun.

**IMPORTANT—PLEASE READ:** Product information, photography and illustrations included in this publication were as accurate as possible at the time of printing. For further product information and changes, please visit our website at [www.AmericanCoach.com](http://www.AmericanCoach.com) or contact your local American Coach dealer. Prices, materials, design and specifications are subject to change without notice. All weights, fuel, liquid capacities and dimensions are approximate. American Coach has designed its recreational vehicles to provide a variety of uses for customers. Each vehicle features optimal seating, sleeping, storage and fluid capacities. The user is responsible for selecting the proper combination of loads (i.e. occupants, equipment, fluids, cargo, etc.) to ensure that the vehicle's capacities are not exceeded.



\*All 2012 American Coach motor homes include a 1-year membership to Coach-Net.

©2011 Fleetwood RV Inc. Printed in USA. Inventory Control Number EAG12F2, 09/11.  
 Model Year 2012, Second Edition.