

TERRA LX

CLASS A GAS

Satin Steel



Cabernet Gold



Black Gold



River Rock



INTERIOR DECORS

Sage Mist

LIVING/DINING ROOM



Dinette Cushions

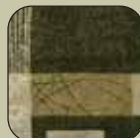


Sofa



Ultraleather™ Driver & Front Passenger Seats, Sofa (optional)

BEDROOM



Bedspread & Headboard



Headboard & Pillow Sham

Canyon

LIVING/DINING ROOM



Dinette Cushions

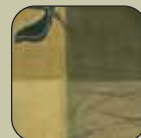


Sofa



Ultraleather™ Driver & Front Passenger Seats, Sofa (optional)

BEDROOM



Bedspread & Headboard



Headboard & Pillow Sham

Mocha Java

LIVING/DINING ROOM



Dinette Cushions



Sofa



Ultraleather™ Driver & Front Passenger Seats, Sofa (optional)

BEDROOM



Bedspread & Headboard



Headboard & Pillow Sham

Wood Finishes



Bijoux Cherry

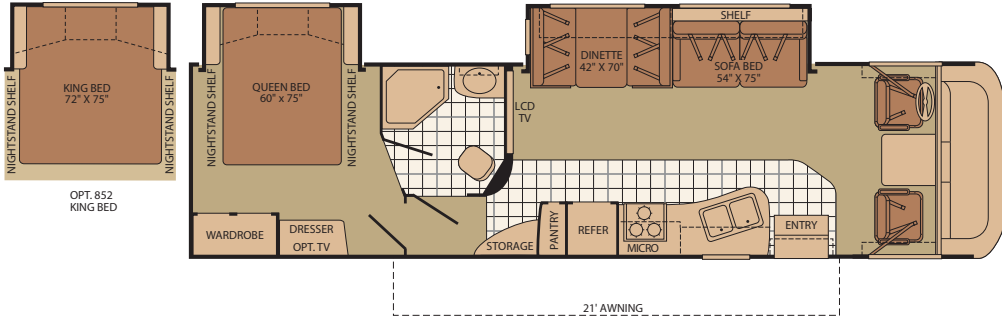


Plantation Cherry

FLOOR PLANS

33L

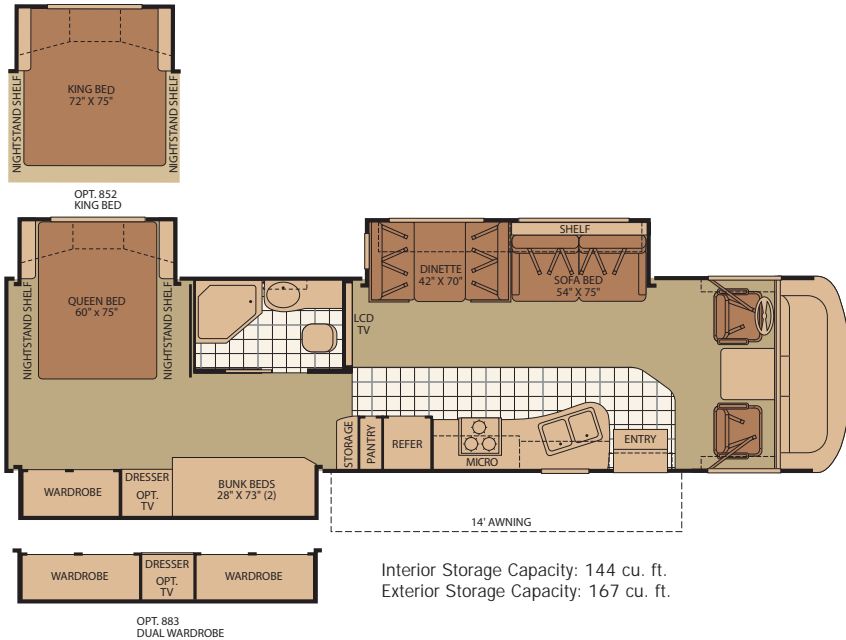
Double Slide-Out



Interior Storage Capacity: 134 cu. ft.
Exterior Storage Capacity: 155 cu. ft.

34B

Triple Slide-Out

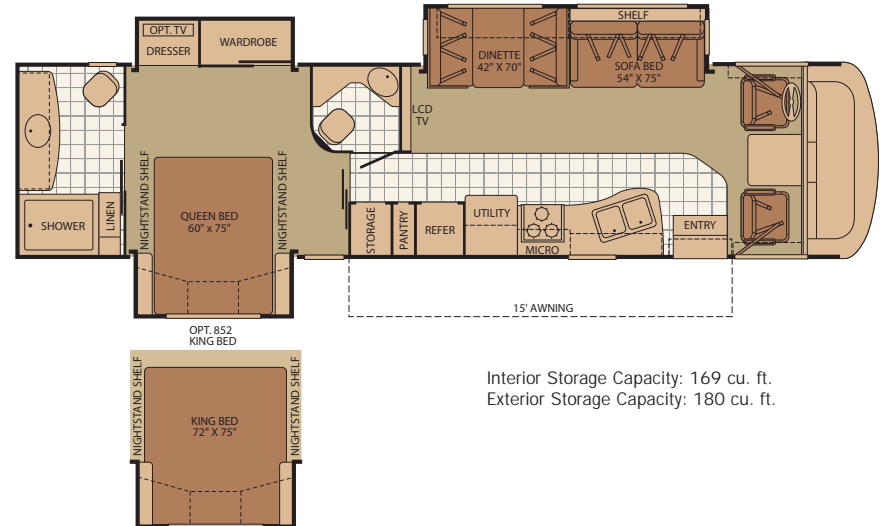


Interior Storage Capacity: 144 cu. ft.
Exterior Storage Capacity: 167 cu. ft.

OPT. 883
DUAL WARDROBE

36T

Triple Slide-Out



Interior Storage Capacity: 169 cu. ft.
Exterior Storage Capacity: 180 cu. ft.

Seatbelt configuration may vary depending on options chosen.

STANDARD FEATURES

INTERIOR

INTERIOR THROUGHOUT

- 15,000 Btu Ducted Air Conditioner
- 3 Interior Décor's
- 34,000 Btu Furnace
- 6 Gallon Quick Recovery Water Heater w/Direct Spark Ignition
- Battery Disconnect System
- Automotive A/C Heater Combo
- TuffPEX Plumbing System
- Deluxe Roller Bearing, Full Extension Drawer Guides
- Wood Cabinet Doors w/Raised Panels
- Hidden Cabinet Door Hinges
- On Demand Water Pump w/Filter
- Systems Monitor Panel
- 120V/12V AC/DC Converter
- Central Electrical Panel w/Charger
- Energy Management System
- Wall Mounted Heat Registers
- Water Heater Bypass
- Vinyl Ceiling, Cushioned

DRIVER CONVENIENCE

- 3 Point Seat Belts at Driver & Front Passenger Seats
- AM/FM Radio w/CD & Satellite Radio Ready
- Auxiliary Start Circuit
- Cruise Control
- Double Swivel Sun Visors w/Map Pockets
- Flexsteel® Driver Captain's Chair w/Reclining Back/Slide Controls
- Flexsteel® Passenger Chair w/Reclining Back/Slide Controls/Footrest/Adjustable Armrests
- Intermittent Wiper Control
- Radio Switch Main/Auxiliary Power
- Tilt Steering Wheel
- Telephone Jack
- 12V Power Jack
- Sirius Satellite Radio® (6 Month Subscription Included)
- Color Rear Vision Camera/Monitor

LIVING ROOM

- 32" LCD HDTV Midship Location
- DVD Player
- Day/Night Pleated Shades
- Video Control Box
- Vinyl Floor Covering in Lavy/Galley/Entry

GALLEY

- 8 cu. ft. Dometic® Refrigerator
- 3 Burner Range w/22" Oven
- 30" Microwave
- Fan-Tastic® Power Roof Vent
- Coordinated Cabinet Hardware
- Large Stainless Steel Double Sink
- Single Lever Faucet
- Wood Drawer Construction

BEDROOM

- Wardrobe w/Mirrored Sliding Doors
- Innerspring Mattress
- Rear TV Receptacle
- TV Shelf w/Cable Jack (TV not included)
- Adjustable Reading Lights

BATHROOM

- Porcelain Marine Toilet
- Molded Acrylic Shower w/Surround
- Skylight in Tub/Shower
- Glass Shower Door
- Medicine Cabinet w/Adjustable Shelves
- Vanity Lights

SAFETY/CONVENIENCE

- 10 ABC Fire Extinguisher
- Carbon Monoxide Detector/Alarm
- Propane Detector/Alarm
- Smoke Detector/Alarm
- Entry Grab Handle
- Child Safety Tether
- Multiple Seatbelt Locations

EXTERIOR

EXTERIOR THROUGHOUT

- 4 Colorway Graphics
- 30 Amp Service
- 4.0 kW Onan® MicroQuiet Generator
- Amber Porch Light
- Awning Rail/Drip Molding (Both Sides)
- Exterior Wash Unit
- Power/Heated Rear View Mirrors
- Full Basement Configuration
- Dometic® Patio Awning
- Radius Entry Door
- Roof Ladder
- TV Antenna w/Signal Booster
- ABS Front/Rear Wheel Well Trims
- 4 Point Automatic Levelers
- Dual 6V Deep Cycle 217 Amp Auxiliary Batteries
- Full-Body Paint

AUTOMOTIVE

- Halogen Headlights w/Polycarbonate Lens
- Rear Fuel Fill
- Trailer Hitch w/7 Pin Electrical Hook-Up†
- 5,000 lb. Towing Capacity†
- 22.5" Aluminum Wheels w/Stainless Steel Trim Kits

SAFETY/CONVENIENCE

- Deadbolt Latch on Entry Door
- Dual Battery Charge Control
- High Mounted Taillights
- Lighted Entry Assist Handle
- One-Piece Swing-Down Engine Access Door
- Park Cable Receptacle
- Patio Receptacle
- Power Entry Step
- Automotive Safety Glass
- Daytime Running Lights
- Hydraulic 4 Wheel Disk Brakes w/4 Wheel Anti-Lock Brakes

BODY STRUCTURE

- Aluminum Interlocking Floor/Wall/Ceiling Framing
- Vacu-bond® Floor and Ceiling
- Vacu-bond® Walls w/Smooth High Gloss Exterior Tuff-Coat® Fiberglass
- Fiberglass Front/Rear Cap
- Windshield Bonded to Fiberglass Front Cap
- One-Piece Royal Tuff-Ply Radius Roof
- Power Platform® Construction (Fleetwood Exclusive)

STORAGE

- Large, Exterior Pass-Through Storage Compartments
- Lighted Luggage Compartments
- Insulated, Side-Swing Luggage Doors
- Rotomolded Polyethylene Luggage Compartments
- Continuous One-Piece Compartment Bulb Seal

OPTIONS

INTERIOR

- High Efficiency Ducted Dual A/C
- 19" LCD HDTV
- King Bed (Select Models)

EXTERIOR

- 30 Amp EMS w/5.5kW Generator/Dual A/C
- 50 Amp EMS w/5.5kW Generator/Dual A/C
- Side Turn Signal Camera

FLEETWOOD ADVANTAGES

- Pass-Through Basement Storage with Side-Swing Doors for Easy Access
- Floor Plans with Midship 32" LCD HDTV
- Ultra High Gloss Fiberglass Walls for Striking Looks
- Interlocking Floor-to-Sidewall Construction for Improved Fit, Finish and Integrity
- Power Platform® Construction (Fleetwood Exclusive)

WEIGHTS AND MEASUREMENTS

FORD® CHASSIS/WORKHORSE™ CHASSIS

MODELS	33L	34B	36T
Engine Displacement (Liters)	6.8/8.1	6.8/8.1	6.8/8.1
Wheelbase (Inches)	208"	228"	228"
GVWR (lbs) ¹	22,000	22,000	22,000
Front GAWR (lbs) ²	7,500	7,500	7,500
Rear GAWR (lbs) ²	14,500	14,500	14,500
GCWR (lbs) ³	26,000	26,000	26,000
Hitch Rating Weight (lbs) [†]	5,000	5,000	5,000
Tongue Weight (lbs) [†]	500	500	500
Fuel Capacity (gal)	75	75	75

DIMENSIONS & CAPACITIES

MODELS	33L	34B	36T
Overall Length ⁴	34' 7"	35' 7"	37' 7"
Overall Height (with A/C)	12' 3"	12' 3"	12' 3"
Overall Width (maximum) ^{5, 6}	102"	102"	102"
Interior Height (maximum)	79"	79"	79"
Interior Width (maximum)	96"	96"	96"
Fresh Water Holding Tank (gal)	50	50	85
Grey Water Holding Tank (gal)	40	40	40
Black Water Holding Tank (gal)	30	30	30
Appliance Propane Tank (gal) (WC) ⁷	25	25	25
Water Heater Tank (gal)	6	6	6

Liquid Weight Reference: Water (gal) = (8.3 lbs/3.8 kgs) Fuel (gal) = (6.1 lbs/2.8 kgs) Propane (gal) = (4.2 lbs/1.9 kgs)

Metric Conversion: Multiply pounds x 0.453 to obtain kilograms. Multiply gallons x 3.785 to obtain liters. Multiply liters x 61 to obtain cubic inches.

CHASSIS

Model: Ford®/Workhorse™

Engine: 6.8L Triton V10/8.1L Vortec™ V8

Transmission: Ford®, 5-Speed Automatic w/Overdrive
Workhorse™, 6-Speed Automatic w/Overdrive

Alternator: 130 Amp/145 Amp

Torque: 457 lb-ft @ 3250 RPM/455 lb-ft @ 3200 RPM

Horsepower: 362HP/340HP

1. GVWR (Gross Vehicle Weight Rating) is the maximum permissible weight of this fully loaded motor home. The GVWR is equal to or greater than the sum of the (UVW) unloaded vehicle weight plus the (CCC) cargo carrying capacity*.
2. GAWR (Gross Axle Weight Rating) is the maximum permissible loaded weight a specific axle is designed to carry.
3. GCWR (Gross Combined Weight Rating) is the value specified by the motor home manufacturer as the maximum allowable loaded weight of this motor home with its towed vehicle. Towing and braking capacities may be different. Refer to Fleetwood and chassis manufacturer's manuals for complete information.
4. Length is measured from front bumper to rear bumper (excludes accessories).
5. Excludes safety equipment and awnings.
6. Motor homes feature a body-width over 96" which will restrict your access to certain roads. Before purchasing, you should research any state and/or province road laws which may affect your usage.
7. Tank manufacturer's listed water capacity (WC). Actual propane capacity is 80% of water listing as required by the safety code.

† The chassis manufacturer recommends the installation of a supplemental brake control system to activate the brakes on the vehicle or trailer you are towing. Hitch receiver ratings expressed are maximum for the hitch receiver installed and may require the purchase of additional equipment that is dependent on the weight of the towed load. Consult with hitch receiver manufacturer for further information.

N/A = not available at time of printing.

* UVW and CCC are found on the cargo carrying capacity label in each RV.

IMPORTANT — PLEASE READ: Product information, photography and illustrations included in this publication were as accurate as possible at the time of printing. For further product information and changes, please visit our website at www.fleetwoodrv.com or contact your local Fleetwood dealer. Prices, materials, design and specifications are subject to change without notice. All weights, fuel, liquid capacities and dimensions are approximate. Fleetwood has designed its recreational vehicles to provide a variety of uses for its customers. Each vehicle features optimal seating, sleeping, storage and fluid capacities. The user is responsible for selecting the proper combination of loads (i.e. occupants, equipment, fluids, cargo, etc.) to ensure that the vehicle's capacities are not exceeded.