

Storm®

2 0 0 1

FLEETWOOD.RV

IT'S HEADING
YOUR **WAY**



A FORECAST FOR ADVENTURE



Lambrequin window treatments throughout accent the color-coordinated living room, galley and bedroom for a lifetime of enjoyment.



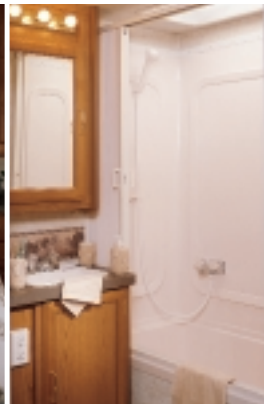
Residential-style, raised-panel cabinets surround the extended galley for greater counter space to prepare meals.



Bench seats with coordinated fabrics plus unexpected storage drawers make the dinette both enjoyable and functional.



The warm and inviting bedroom includes overhead storage, accent lighting, coordinated bed and window fabrics, and convenient nightstands.



Skylight adds a soothing, natural glow to the bathroom.

FLEETWOOD IS RENOWNED FOR QUALITY. So much so that Storm's exterior will weather the elements day after day, year after year. The same is true of its interior that's made to hold up to your active lifestyle.

Storm's spacious drawers are dovetail constructed with dual, metal roller guides and transit ship locks. Carpets are made of durable DuPont fiber, and window treatments are created to withstand the sun's harsh UV rays. You'll also love the day/night-pleated shades in the living area and night shades

in the bedroom that cover your adjustable jalousie windows.

Through the bathroom skylight, a natural glow will spill on an invigorating shower or a relaxing bath. You'll receive ample hot water due to the 6-gallon quick recovery water heater. And, after a great day of bike riding or fishing, wash down your equipment using the exterior shower.

This is an RV that can indulge your desires. So now, when you're ready to take a trip, you'll actually like to hear the words..."a Storm® is coming."



2 0 0 1

FLEETWOOD® RV

WE PREDICT A REIGN OF FUN WITH STORM.®

Storm® has just arrived, bringing more of what you want at a sticker price that redefines value in a Class A motor home.

Hiking, fishing, biking, golf...Storm will take you where you want to go in style. For a smooth and nearly flawless ride, this wide-body RV sits on a Power Platform II that minimizes chassis flex, even on bumpy roads. A steel-truss design allows substantial space below for sports gear.

When it comes to interior room, Storm doesn't hold back here either. With living room, dinette and bedroom slide-outs, it could easily be thought of as your second home. There's even storage drawers under the family-size dinette. A Magic Chef® 16" 3-burner range/oven, a microwave with electronic touch pad, and a 6 cu. ft. Dometic® double-door

refrigerator provide all the accommodations you need to prepare gourmet meals.

Don't forget, even though this motor home will take you away from it all, you can stay connected. When caught in a Storm, the dash-mounted workstation has computer hookups so you'll have access to the internet and the ability to e-mail family and friends.* There's also an additional telephone jack in the bedroom.

You want more? View your favorite shows on the 20" Panasonic® TV with interior-controlled antenna, video control box and park cable-ready receptacle.

So with all of this going for you, we forecast exciting adventures with Storm.



* Not intended for use while in transit. Unsecured items are hazardous during traveling.

Magic Chef® is a registered trademark of Maytag • Panasonic® is a registered trademark of Matsushita Electric Corporation of America • Dometic® is a registered trademark of AB Electrolux.



STORM FEATURES FOR 2001

Our engineering may set us apart from the rest, but the things you'll notice most when you and your family take a trip, are the top-of-the-line features. Here are but a few of the items that make life on the road with Storm memorable.



Front entertainment center with 20" Panasonic® color TV, and optional VCR are just some of the many Storm features.



An optional electronic climate control system with dual A/C controls enables a separate climate in the front and rear of the coach.



Every Storm comes prewired for an optional Winegard® satellite dish.



Fill Storm up on either side of the pump with a rear fuel-fill location, especially convenient when towing a vehicle.

Carpeted storage compartments are non-corrosive to prevent rusting.

A coach-length, aluminum drip rail prevents discoloring of the sidewall.

Practical, single die-cast metal paddle latches are flush-mounted for a luggage door system that's durable and easy-to-operate.

Anti-wicking process, on all of Storm's openings and windows, includes multiple seals for prevention of leaks and moisture buildup.

Our swing-down engine access door makes it easy to check Storm's fluid levels and electrical panel.



Storm's standard 4.0kW ultra-quiet Onan® generator provides 110V service and comes with a 3-year warranty. (Optional 5.5kW generator shown)



The driver's cockpit is user friendly with automotive-style gauges and easy-to-reach controls.



Storm's basement space includes lots of storage for your gear.

APPLIANCES

- Front 20" Panasonic® TV in Overhead
- Smoke Detector/Alarm
- LPG Detector/Alarm
- CO Detector/Alarm
- Furnace 35M BTU
- 6-Gallon Quick Recovery Water Heater with D.S.I.
- Water Heater Bypass
- 16" 3-Burner, High-Output Range with Oven
- Light/Power Range Hood & Monitor Panel
- Folding Range Cover
- Single A/C with Solar Panel
- Marine Toilet
- 1-cu. ft. Microwave with Electronic Touch Pad
- 6-cu. ft. Dometic® Double Door Refrigerator
- Single-Lever Galley Faucet
- Demand Water Pump with Filter
- Power Bath Vent
- TV Antenna
- Video Control Box
- Fire Extinguisher
- Telephone Jack in Dash and Bedroom
- 12V Jack

BODY STRUCTURE

- Vacubond Upper/Lower Floor
- Vacubond Walls with Smooth Exterior Fiberglass
- Radius Roof with Ducted A/C & Flat Interior
- Rubber Roof
- Steel Floor/Wall/Ceiling Framing

ELECTRICAL

- Patio Receptacle in Luggage Compartment
- 120V/12V AC/DC Converter Central Electrical Panel with Charger
- Water Pump Switch
- 4.0kW Onan® Generator
- 30-amp Service
- Dual 6V/Deep-Cycle 218-amp House Batteries
- VCR Ready
- Rear TV Receptacle

EXTERIOR

- Fiberglass Front Cap
- Fiberglass Front Bumper

EXTERIOR (CONT.)

- Aluminum Front Grille
- ABS Front/Rear Wheel Well Trim
- Swing-Down Engine Access Door
- Entry Door with Deadbolt Latch
- Slider Windows in Living Room
- Jalousie Windows in Bedroom
- Roof Ladder
- Exterior Assist Handle
- Exterior Rear View Mirrors
- 20' Sewer Hose
- TV Antenna
- Park Cable Receptacle
- Awning Rail/Drip Molding (Both Sides)
- Power Entry Step
- Exterior Shower
- Porch Light
- 3 Colorway Graphics to Match Decor
- Lower Body Accent Panel
- Storm Logo Badging

EXTERIOR AUTOMOTIVE

- Tinted Windshield
- Undercoating
- Stainless Steel Wheel Simulators
- Valve Extenders
- Steel Surface on Bulkhead
- Trailer Hitch with 7-Point Electrical Hook-up
- Halogen Headlights
- Under-Floor Spare Tire (Selected Models)
- Dual Battery Charge Control
- Single Motor Windshield Wipers with Wet Arm

EXTERIOR STORAGE

- Insulated Luggage Doors
- Single-Paddle/Metal Latches
- Continuous One-Piece Bulb Seals
- Gas Lift Strut Supports—One Per Door
- Steel Seal Frames
- Carpeted Luggage Compartments
- Lighted Luggage Compartments

INTERIOR

- 3 Interior Decors
- Skylight in Tub/Shower
- Wall-to-Wall Carpet with Pad—Living & Bedroom
- Vinyl Floor Covering—Galley & Bath
- Wood Drawers (Dovetail Construction)

INTERIOR (CONT.)

- Roller Guide Drawer Slides with Transit Ship Locks
- Brass-Finished Cabinet Hardware
- Reclining Bucket Seat/Lounge
- Seat Belts at Designated Seating Positions
- Shades—Day/Night in Living, Night in Bedroom
- Bedspread
- Restonic® Innerspring Mattress
- Slide-Out Dinette Bins with Locks
- Window Covering
- ABS Molded Shower Pan
- Bright Brass Bath Accessories
- Entry Rail (Oak & Brass)
- Sink Cutting Board
- Large, Double Stainless Steel Sink
- Adjustable Cabinet Shelves (Selected Cabinets)
- Solid Divider Doors

INTERIOR AUTOMOTIVE

- Intermittent Wiper Control
- Double Swivel Sun Visors with Map Pockets
- Cruise Control
- Radio with Cassette AM/FM/MX—Electronic Tuning
- Auxiliary Start Circuit
- Battery Disconnect System
- Auto A/C Heater Combo
- Battery-Powered Radio Switch—Main/Auxiliary
- Driver/Passenger Side Magazine Rack
- Tilt Steering Wheel
- Driver/Passenger Captain's Chairs with Reclining Back/Slide Controls
- 3-Point Seat Belts on Driver/Passenger Seats

INTERIOR LIGHTING

- Decor Lighting
- Incandescent Lighting
- Make-Up Lights in Bath

PLATFORM CONSTRUCTION

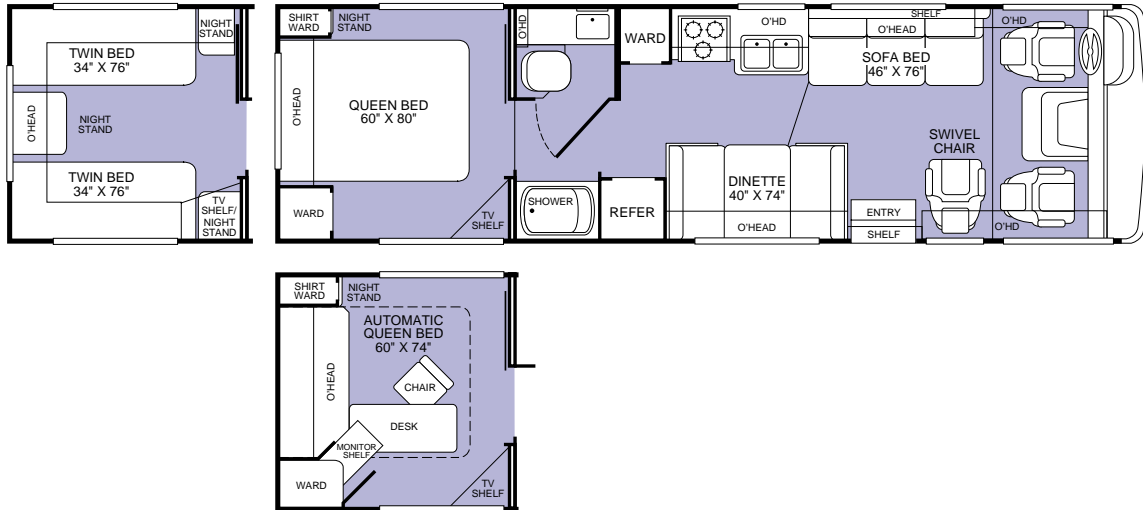
- Basement Floor Configuration
- Heated Water & Holding Tank Compartments
- Carpeted, Galvanized Luggage Compartments
- Steel Truss System
- Power Platform II



STORM FLOOR PLANS FOR 2001

MODEL 30H

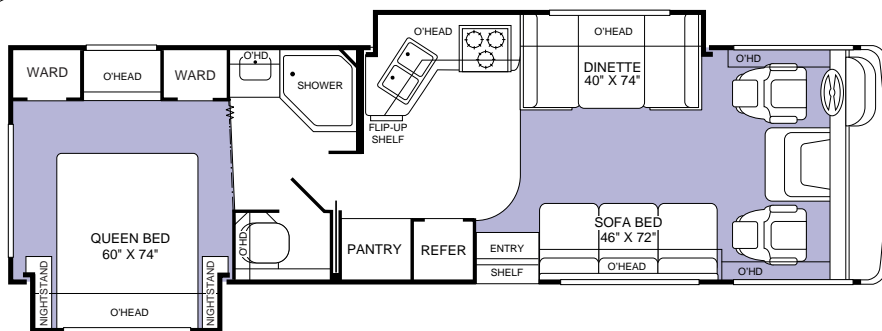
- Optional SmartRoom™
- Island Queen Bed
- Optional Twin Beds
- Private Toilet and Lavy
- Dinette
- Sofa Bed
- Swivel Chair



MODEL 31A

- Bedroom Slide-Out with Island Queen Bed
- Bedroom Feature Cabinets with Integrated Vanity
- Private Toilet
- Spacious Pantry
- Galley/Dinette Slide-Out
- Sofa Bed

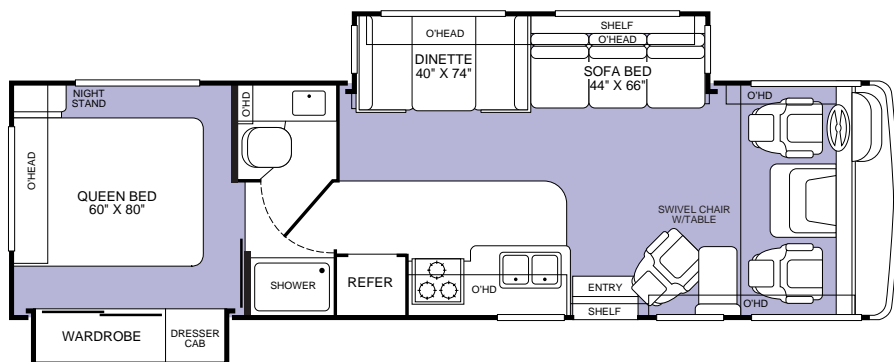
NEW FOR
2001





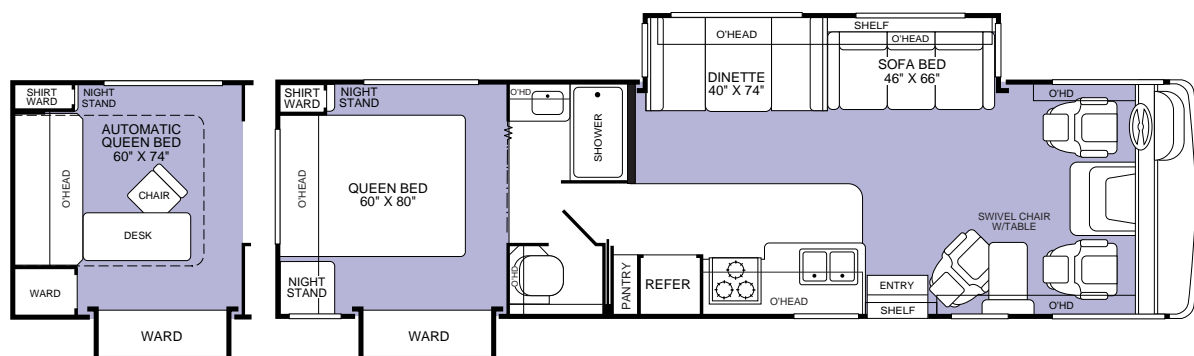
MODEL 31W

- Island Queen Bed
- Wardrobe Slide-Out with Dresser
- Private Toilet and Lavy
- Swivel Chair with Table
- Living Room Slide-Out with Dinette and Sofa Bed



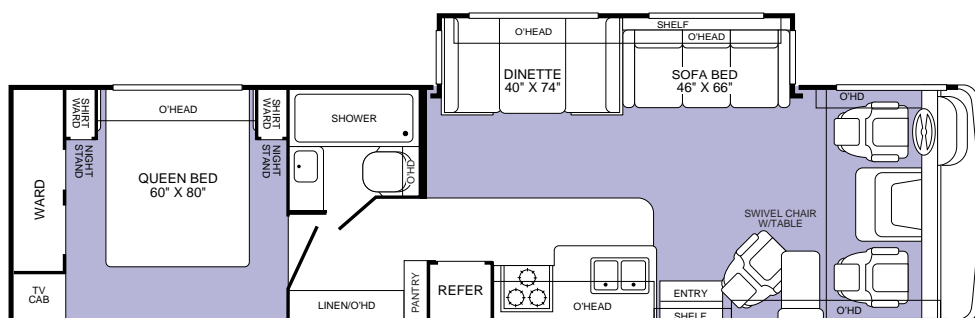
MODEL 32V

- Optional SmartRoom™
- Island Queen Bed
- Wardrobe Slide-Out
- Private Toilet
- Swivel Chair with Table
- Living Room Slide-Out with Dinette and Sofa Bed



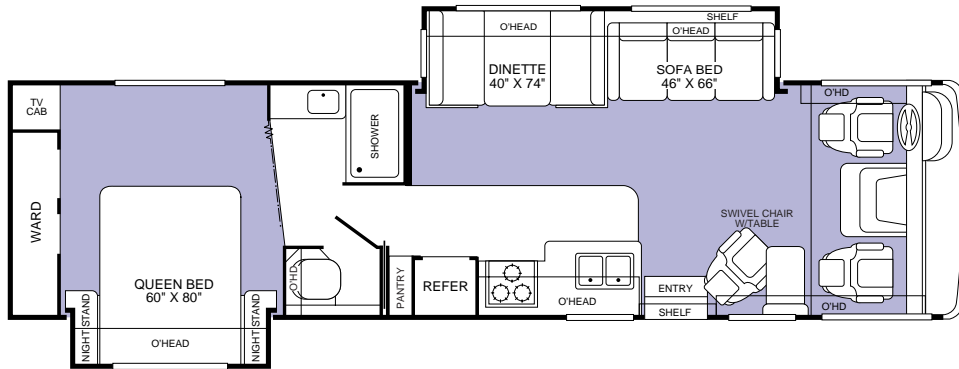
MODEL 34D

- Island Queen Bed
- Dual Nightstands and Shirt Wards
- Spacious Wardrobe
- Fully Enclosed Bathroom
- Living Room Slide-Out with Dinette and Sofa Bed
- Swivel Chair with Table



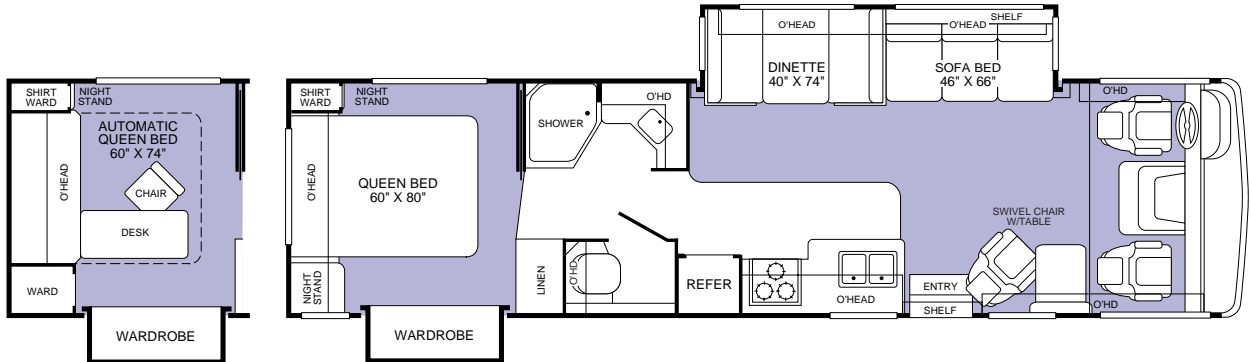
MODEL 34N

- Bedroom Slide-Out with Island Queen Bed
- Private Toilet
- Living Room Slide-Out with Dinette and Sofa Bed
- Spacious Wardrobe
- Swivel Chair with Table



MODEL 34T

- Optional SmartRoom™
- Private Toilet
- Living Room Slide-Out with Dinette and Sofa Bed
- Island Queen Bed
- Swivel Chair with Table
- Wardrobe Slide-Out



SmartRoom™ converts easily from a bedroom to an office, or to 30 sq. ft. of floor space to use however you wish. Actual cabinetry and design varies by product and floor plan.





2001 OPTIONS



APPLIANCES	30H	31A	31W	32V	34D	34N	34T
Panasonic® VCR/VHS	OPT	OPT	OPT	OPT	OPT	OPT	OPT
Winegard® Satellite Dish	OPT	OPT	OPT	OPT	OPT	OPT	OPT
Compact Disc Player	OPT	OPT	OPT	OPT	OPT	OPT	OPT
Fan-Tastic® Power Roof Vent	OPT	OPT	OPT	OPT	OPT	OPT	OPT
Rear Panasonic® Television with Remote	OPT	OPT	OPT	OPT	OPT	OPT	OPT

ELECTRICAL	30H	31A	31W	32V	34D	34N	34T
ECC w/Dual A/C with 5.5kW Generator Upgrade	OPT	OPT	OPT	OPT	OPT	OPT	OPT
CSA Package–Workhorse®	OPT	N/A	N/A	OPT	N/A	N/A	N/A
CSA Package–Ford®	OPT	OPT	OPT	OPT	OPT	OPT	OPT
CSA w/ECC Dual A/C with 5.5kW Generator Upgrade	OPT	OPT	OPT	OPT	OPT	OPT	OPT

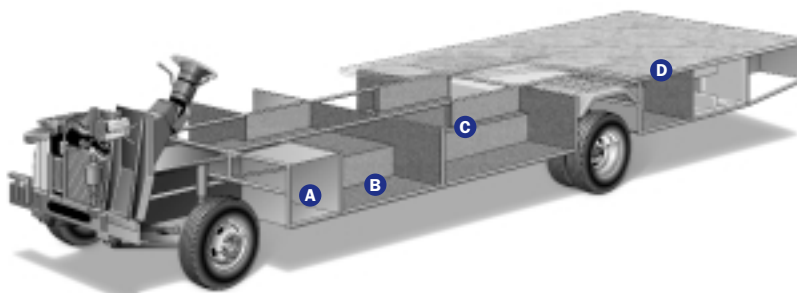
EXTERIOR	30H	31A	31W	32V	34D	34N	34T
Awning–USA	OPT	OPT	OPT	OPT	OPT	OPT	OPT
4-Pt Manual Hydraulic Levelers–Workhorse®	OPT	N/A	N/A	STD	N/A	N/A	N/A
4-Pt Manual Hydraulic Levelers–Ford®	OPT	STD	STD	STD	STD	STD	STD
Heated Remote Rear View Mirrors	OPT	OPT	OPT	OPT	OPT	OPT	OPT

EXTERIOR AUTOMOTIVE	30H	31A	31W	32V	34D	34N	34T
Workhorse® Chassis 7.4L Vortec™ Engine	OPT	N/A	N/A	OPT	N/A	N/A	N/A
Ford® Chassis 6.8L Engine	OPT	OPT	OPT	OPT	OPT	OPT	OPT
Rear Vision Camera	OPT	OPT	OPT	OPT	OPT	OPT	OPT

INTERIOR	30H	31A	31W	32V	34D	34N	34T
SmartRoom™	OPT	N/A	N/A	OPT	N/A	N/A	OPT
Shower Curtain	N/A	N/A	N/A	N/A	STD	N/A	N/A
Pleated Shower Door	STD	N/A	STD	N/A	N/A	STD	N/A
Shower Door with Bright Brass Frame	N/A	STD	N/A	STD	N/A	N/A	STD

SLIDE-OUT	30H	31A	31W	32V	34D	34N	34T
Living Room–Dinette/Sofa	N/A	N/A	STD	STD	STD	STD	STD
Bedroom Wardrobe–Closet/Organizer	N/A	N/A	STD	STD	N/A	N/A	STD
Bedroom–Bed	N/A	STD	N/A	N/A	N/A	STD	N/A
Galley–Galley/Sofa	N/A	STD	N/A	N/A	N/A	N/A	N/A

Storm's Power Platform II is a unique truss design welded together using tubular steel that's durable, strong and dependable. The result is a quiet and nearly flawless ride, increased floor strength and substantially more storage space below. An all-steel foundation further reduces stress loads on the sidewalls and minimizes chassis flex on uneven roads.



A Easy access compartments let you get to Storm's batteries.

B All exterior compartments are reinforced with substantial steel outriggers for increased durability and years of cargo carrying.

C Full basement construction maximizes space beneath the floor, encloses the heated water and holding tank compartments, and provides easy-to-reach, pass-through storage.

D The floor is a vacuum-bonded composite of steel tubing, foam insulation, and marine-grade plywood cut to our exact specs for lightweight strength and resistance to moisture.



FORD® CHASSIS	30H	31A	31W	32V	34D	34N	34T
Engine LD	6.8L	6.8L	6.8L	6.8L	6.8L	6.8L	6.8L
Wheelbase	190"	208"	208"	208"	208"	208"	208"
GVWR lbs/kgs (1)	18,000/8,165	20,500/9,299	20,500/9,299	20,500/9,299	20,500/9,299	20,500/9,299	20,500/9,299
Front GAWR lbs/kgs (2)	7,000/3,176	7,000/3,176	7,000/3,176	7,000/3,176	7,000/3,176	7,000/3,176	7,000/3,176
Rear GAWR lbs/kgs (2)	11,000/4,990	13,500/6,124	13,500/6,124	13,500/6,124	13,500/6,124	13,500/6,124	13,500/6,124
Base Weight lbs/kgs (3)	13,420/6,088	15,370/6,972	16,000/7,258	15,410/6,990	15,670/7,108	16,020/7,267	15,760/7,149
GCWR lbs/kgs (4)	23,000/10,433	25,500/11,567	25,500/11,567	25,500/11,567	25,500/11,567	25,500/11,567	25,500/11,567
Hitch Rating/Tongue Weight lbs	5,000/500	5,000/500	5,000/500	5,000/500	5,000/500	5,000/500	5,000/500
Hitch Rating/Tongue Weight kgs	2,268/227	2,268/227	2,268/227	2,268/227	2,268/227	2,268/227	2,268/227
Fuel Capacity gal/lbs (6.1 lbs/gal)	75/450	75/450	75/450	75/450	75/450	75/450	75/450

WORKHORSE® CHASSIS	30H	31A	31W	32V	34D	34N	34T
Engine LD	7.4L	N/A	N/A	7.4L	N/A	N/A	N/A
Wheelbase	190"	N/A	N/A	208"	N/A	N/A	N/A
GVWR lbs/kgs (1)	17,000/7,712	N/A	N/A	18,000/8,165	N/A	N/A	N/A
Front GAWR lbs/kgs (2)	6,000/2,722	N/A	N/A	6,000/2,722	N/A	N/A	N/A
Rear GAWR lbs/kgs (2)	11,000/4,990	N/A	N/A	12,000/5,444	N/A	N/A	N/A
Base Weight lbs/kgs (3)	12,700/5,761	N/A	N/A	14,990/6,800	N/A	N/A	N/A
GCWR lbs/kgs (4)	20,500/9,299	N/A	N/A	21,000/9,526	N/A	N/A	N/A
Hitch Rating/Tongue Weight lbs	3,500/350	N/A	N/A	3,500/350	N/A	N/A	N/A
Hitch Rating/Tongue Weight kgs	1,588/159	N/A	N/A	1,588/159	N/A	N/A	N/A
Fuel Capacity gal/lbs (6.1 lbs/gal)	75/450	N/A	N/A	75/450	N/A	N/A	N/A

DIMENSIONS	30H	31A	31W	32V	34D	34N	34T
Length (5)	31' 6"	32'	32'	33'	35'	34' 6"	35'
Height (with A/C)	11' 10"	11' 10"	11' 10"	11' 10"	11' 10"	11' 10"	11' 10"
Width (maximum) (6)	102"	102"	102"	102"	102"	102"	102"
Interior Height (maximum)	79"	79"	79"	79"	79"	79"	79"
Interior Width (maximum)	96"	96"	96"	96"	96"	96"	96"

LIQUID CAPACITIES (GALLONS/LITERS)	30H	31A	31W	32V	34D	34N	34T
Fresh Water Holding Tank (8.3 lbs/gal)	75/284	75/284	75/284	80/303	75/284	75/284	75/284
Grey Water Holding Tank (8.3 lbs/gal)	50/189	50/189	50/189	50/189	50/189	50/189	50/189
Black Water Holding Tank (8.3 lbs/gal)	50/189	50/189	50/189	50/189	50/189	50/189	50/189
Appliance LPG Tank (4.5 lbs/gal) (WC) (7)	25/95	25/95	25/95	25/95	25/95	25/95	25/95
Water Heater Tank (8.3 lbs/gal)	6/23	6/23	6/23	6/23	6/23	6/23	6/23

METRIC CONVERSIONS:	Feet to meters: ft x .304 = meters	Lbs to kgs: lbs x .454 = kgs	Gallons to liters: gal x 3.78 = ltrs
---------------------	------------------------------------	------------------------------	--------------------------------------

1. GVWR (Gross Vehicle Weight Rating): Means the maximum permissible loaded weight of the motor home. The GVWR is equal to or greater than the sum of the unloaded vehicle weight plus the net carrying capacity.
2. GAWR (Gross Axle Weight Rating): Means the maximum permissible loaded weight a specific axle is designed to carry.
3. BW (Base Weight): Means the weight of the motor home without fuel, options, water, cargo or passengers.

4. GCWR (Gross Combined Weight Rating): Means the value specified by the motor home manufacturer as the maximum allowable loaded weight of this motor home with its towed vehicle. Towing and braking capacities may differ. Refer to Fleetwood and chassis manufacturer manuals for complete information.
 5. Length taken from front bumper to rear bumper.
 6. Excludes safety equipment and awnings.
 7. Tank Manufacturer's listed water capacity (WC). Actual LPG capacity is 80% of water listing as required by the safety code.
- N/A: Information not available at the time of publication.

IMPORTANT – PLEASE READ: Product information and photography included in this brochure were as accurate as possible at the time of publication. For the most current product information and changes, please visit our website at www.fleetwood.com or contact your local Fleetwood dealer. Subsequent refinements may be evident in the actual product. Prices and specifications are subject to change without notice. All weights, fuel, liquid capacities and dimensions are approximate. Fleetwood has designed its recreational vehicles to provide a variety of uses for its customers. Each vehicle features optimal seating, sleeping, storage and fluid capacities. The user is responsible for selecting the proper combination of loads to ensure that the recreational vehicle's capacities are not exceeded.

WHAT HAPPENS WHEN YOU SET THE STANDARDS OF RV QUALITY FOR OVER 50 YEARS?

YOU SET THEM EVEN HIGHER...

Our customers expect us to. As a matter of fact, first-time RV buyers, who bought other manufacturers' RVs, tell us they wish they'd spent a little bit more for better quality. That's why experienced buyers are more likely to buy a Fleetwood RV.* That's also why Fleetwood RV invests in people, systems, and manufacturing quality that are second to none. This *may* make us a bit more expensive than some brands, but satisfied Fleetwood RV owners know we're worth it.

PEOPLE...

We hire engineers, designers and drafters from leading automotive design schools. Our front-line associates are well-trained, quality-minded men and women who take pride in their work. No other manufacturer has a larger, more professional team behind their products.

SYSTEMS...

Our product development team uses state-of-the-art, computer-assisted-design (CAD) technology to build in fit and finish right from the drawing board. Each product is meticulously documented with over 3,500 pages of engineering drawings. A computerized bill of materials

details over 20,000 pieces that go into your motor home. And, a vehicle specific *Electronic Parts Catalog* shows 600 – 800 common parts... so, if you need a new part, your authorized Fleetwood RV service dealership knows exactly what you need. Some manufacturers may not invest the extra time and money to accurately document their products, which could cost you plenty in headaches and hassles down the road.

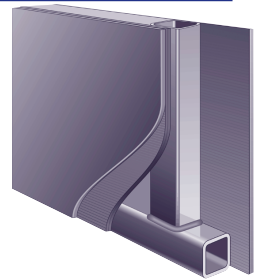
MANUFACTURING...

We only do what we know we're best at—building a quality-finished motor home. When it comes to the appliances, doors, windows and furniture, we partner with other recognized leaders to do what they know best... top names like Sharp®, Panasonic®, Dometic®, Restonic® and Flexsteel®. Some manufacturers will tell you partnering like this makes us final assemblers. We call it working smarter to bring you more value.

QUALITY...

The quality outside reflects the quality inside—places where you can't see it, but where it really counts. For example, we use vacubonded sidewall construction that's required for the special needs of a

For strength, noise reduction and insulation, composite sidewalls and floors are constructed of steel, plywood and polystyrene foam.



motor home. Our new TuffPEX™ plumbing system is able to withstand temperatures as low as -40° F. Before any unit rolls off the line at each of our plants, it goes through a documented checklist containing hundreds of items specific to that product. It won't leave the plant until it has met our high standards. And, the list goes on.

From the drawing board to the assembly line, we will continue to develop and manufacture quality products for our customers.

Fleetwood RV... setting standards beyond your expectations.

*Angus Reid RV Market Segmentation Study, 1998

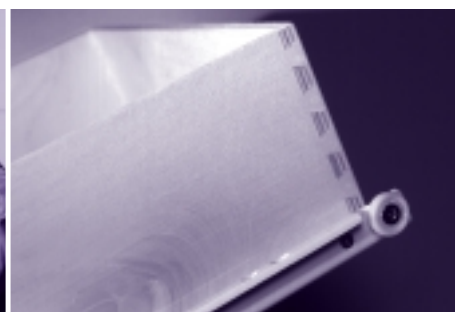
Aided by the IronCAD™ system, hundreds of analysis and refinement hours are spent before prototypes are built.



Time is devoted to refining the style and aerodynamics of every Fleetwood motor home.



Our dovetail constructed drawers provide increased durability and longevity, and feature dual metal tracks for smooth operation.



Sharp® is a registered trademark of Sharp Electronics • Flexsteel® is a registered trademark of Flexsteel • TuffPEX™ is a trademark of Uponor.



FLEETWOOD'S FAR-REACHING WARRANTY AND SERVICE PROGRAM



LIMITED ONE-YEAR/ THREE-YEAR WARRANTY

Leaving the Fleetwood dealership after you've purchased your RV doesn't mean leaving each dealer's commitment to your satisfaction behind.

OWNERCARE, Fleetwood's extensive warranty and service program, provides one/three year(s) of dedicated customer satisfaction. OWNERCARE stands out as one of the RV industry's most comprehensive programs and includes systems and applications, construction, no deductible and no service charge. See your nearest Fleetwood dealer for a full explanation of benefits and restrictions.

FULLY TRANSFERABLE

At Fleetwood RV, we're confident in our products and don't hesitate to stand behind them. Your newly purchased Fleetwood RV comes with one of the industry's most comprehensive warranties, fully transferable for the first 12 months.

NATIONAL COVERAGE

Have a question about your new Fleetwood RV? We've got it covered. The nation's largest trained dealer network—ready, willing and able to provide you with the services you need to make every moment of owning your RV enjoyable. Over 1,100 Fleetwood dealers throughout the U.S. and Canada are available to you. With national coverage, peace of mind and complete satisfaction are just a phone call away.



AN EXTRA THANK YOU

Ask your dealer about your Thousand Trails complimentary 30-day membership certificate. It's your chance to get going in your new RV and enjoy some scenic camping, plus our way of thanking you again for your purchase of a Fleetwood RV. For more information on your complimentary membership certificate, please call 1-800-205-0606.

Happy (Thousand) Trails!



FLEETWOOD RV AND MOTOR SPORTS: A WINNING TEAM



Three wide in the first turn. 200 miles per hour on the back straight. Passing for the lead through the short chute. Nothing beats the excitement of NASCAR racing. Every year thousands of NASCAR fans and Fleetwood RV owners travel to races to support their favorite drivers, enjoy time with family and rekindle friendships.

RVs have become as much a part of motorsports as pit row and the checkered flag. That's why Fleetwood RV is a proud sponsor of 1999 Winston Cup Champion Dale Jarrett and the Robert Yates Racing Team.

As the number one RV manufacturer* in the country, our winning ways continue. Fleetwood RV is now the "Official Recreational Vehicle" at nine

*According to Statistical Surveys Jan. '99-Dec. '99

International Speedway Corporation racetracks.** And for Fleetwood owners, emergency service crews are available at select tracks to ensure a trouble-free weekend. While you're enjoying the race, be sure to look for the Fleetwood RV Prize Patrol and go home with some exciting giveaways.

So this weekend, pack up your friends and family and experience the thrill of cheering on Dale firsthand, in first-class style, with Fleetwood RV.

** Daytona International Speedway, Darlington Raceway, Talladega Superspeedway, California Speedway, Richmond International Speedway, Michigan Speedway, Watkins Glen International Speedway, Phoenix International Raceway, Homestead-Miami Speedway.



www.fleetwood.com

Visit our website to find a dealer near you, learn more about other Fleetwood products or purchase Fleetwood branded apparel. Or call 1-800-444-4905.

FOR CUSTOMER ASSISTANCE, call toll free 24 hours a day at 1-800-322-8216, visit our website, or you may write to Fleetwood Enterprises, Inc., P.O. Box 7638, Riverside, CA 92513-7638.

IMPORTANT—PLEASE READ: Product information and photography included in this brochure were as accurate as possible at the time of publication. For the most current product information and changes, please visit our website at www.fleetwood.com or contact your local Fleetwood dealer. Subsequent refinements may be evident in the actual product. Prices and specifications are subject to change without notice. All weights, fuel, liquid capacities and dimensions are approximate. Fleetwood has designed its recreational vehicles to provide a variety of uses for its customers. Each vehicle features optimal seating, sleeping, storage and fluid capacities. The user is responsible for selecting the proper combination of loads to ensure that the recreational vehicle's capacities are not exceeded.

FLEETWOOD RV

America's Favorite Recreational Vehicles

Fleetwood Enterprises, Inc., RV Marketing, P.O. Box 7638, Riverside, CA 92513-7638

Your local Fleetwood RV dealer is:



This award certifies that Fleetwood has met Ford's rigid quality standards for utilizing a Ford chassis.

2001 STORM INTERIOR FABRICS

Your motor home takes you to new adventures every day. And since this home will be an enduring part of your life, we offer a selection of colors and textures that are a fine blend of classic and contemporary style. We search to obtain quality fabrics that are elegant, yet durable, to keep up with your active lifestyle. Year after year, the look will be as welcoming to you as it is to your guests.

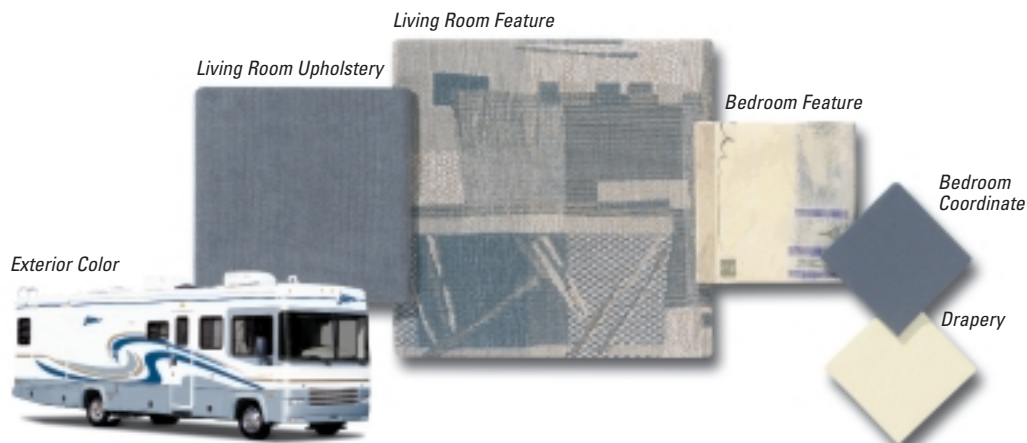
IVY LEAF



RICH MINK



RADIANT SAPPHIRE



FLEETWOOD FAMILY FUN... THE JOURNEY CONTINUES

Where do you want to be? The possibilities are almost limitless. From mini motor homes to luxury coaches, from gas to diesel performance, there's a Fleetwood motor home to fulfill your dreams.

We know exactly how you feel, realizing there's a whole new world to experience. That's why we made sure you can choose from the broadest selection of brands and floor plans the world has to offer. It's no wonder that one out of four motor homes sold is a Fleetwood.*

This is your journey. Take it for a spin.

*According to Statistical Surveys Jan.'99–Dec.'99



© 2000 Fleetwood Enterprises, Inc.
Inventory Control Number ST01B1/1st Edition 7/00

