

*Open Range*



*Roamer*





*Enjoying the Journey....*





# On a Mission

At Open Range RV, we are on a mission to...

Fulfill the trailer needs of our dealer base and retail customers, and in doing so, exceed their expectations for service, quality and value.

Earn our dealers', retail customers' and employees' long-term loyalty by delivering more than we promise, in a fair and honest business manner.

Motivate our employees to provide exceptional service and quality to our retail customers and dealers.

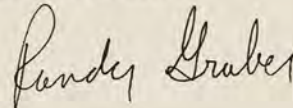
Compensate our employees fairly and provide opportunity for personal growth within our company.

Although it is our goal to provide a product that exceeds our customer needs and level of quality, we do not strive to be the biggest or the most profitable. In the end, we believe satisfied customers, dealers and employees will bring growth and long term profitability for all.

For almost 30 years, I have had the great fortune to work in the amazing industry of RV manufacturing. This industry runs through my blood and is the passion of my life. This has been a dream come true for me and my family. I would like to thank everyone who believed in us as an RV Manufacturer. At Open Range our motto is ENJOY THE JOURNEY!

It has been an amazing JOURNEY so far! Come join us on this great JOURNEY, we don't want you to miss another moment of it.

Enjoy the Journey!

A handwritten signature in black ink that reads "Randy Graber". The signature is fluid and cursive, with the first name "Randy" and last name "Graber" clearly distinguishable.

Randy Graber, President  
Open Range RV Company

# Roamer



RT303BHS Dinette in Haversham





RT303BHS Living Room and Kitchen in Haversham



Pull Out  
Waste  
Basket



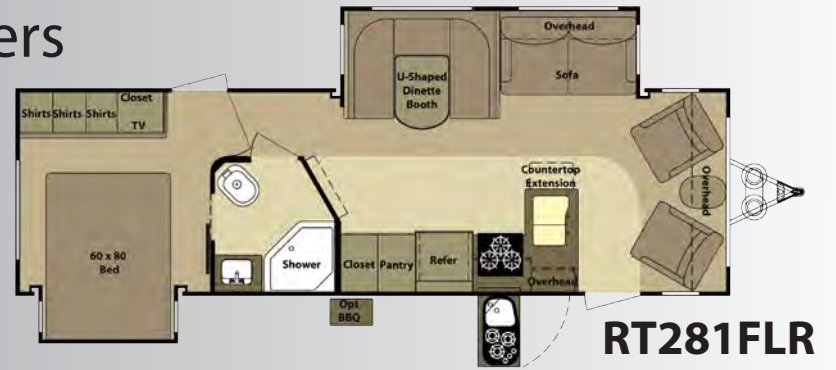
Pull Out  
Pantry

Outside Kitchen Area (Travel Trailers Only)





# Travel Trailers



	GVWR	UVW	Hitch Wt.	Axle Wt.	Gross NCC	Ext. Length	Ext. Height	Ext. Width	Water Heater (Gas/Elec)	Fresh Water	Waste	Grey Water	Furnace BTU's	LP Gas (Lbs)	Tire Size
RT266RLS	9485	6415	685	5730	3070	30'9"	133"	100"	6 Gal	50	30	60	30,000	60	15"
RT281FLR	9710	6780	910	5870	2930	32'	133"	100"	6 Gal	50	30	60	30,000	60	15"
RT296BHS	9530	7115	730	6385	2415	33'	133"	100"	6 Gal	50	30	60	30,000	60	15"
RT303BHS	9545	7115	745	6370	2430	33'	133"	100"	6 Gal	50	30	60	30,000	60	15"
RT331BHS	11150	7415	750	6665	3735	36'8"	133"	100"	6 Gal	50	30	60	30,000	60	15"

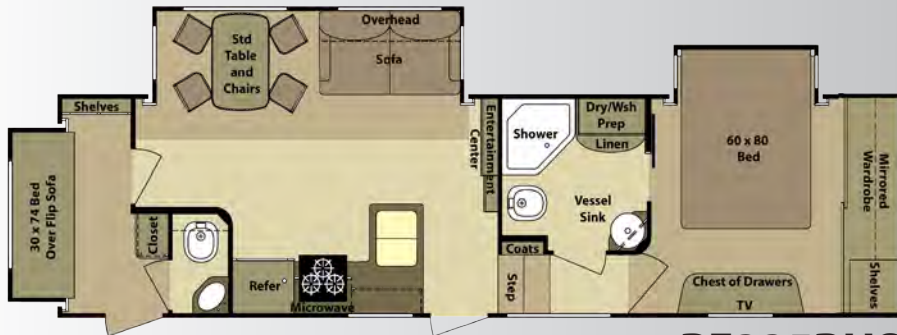
# Fifth Wheels



**RF270RLS**



**RF287RLS**



**RF335BHS**



**RF280RLS**



**RF316RLS**



**RF392BHS**

	GVWR	UVW	Hitch Wt.	Axle Wt.	Gross NCC	Ext. Length	Ext. Height	Ext. Width	Water Heater (Gas/Elec)	Fresh Water	Waste	Grey Water	Furnace BTU's	LP Gas (Lbs)	Tire Size
RF270RLS	TBA	TBA	TBA	TBA	TBA	28'6"	153"	100"	6 Gal	81	41	82	35,000	80	15"/Opt16"
RF280RLS	10175	7870	1375	6495	2305	28'	153"	100"	6 Gal	81	41	98	35,000	80	15"/Opt16"
RF287RLS	10175	7770	1375	6395	2405	29'6"	153"	100"	6 Gal	81	41	82	35,000	80	15"/Opt16"
RF316RLS	10935	8565	2135	6430	2370	30'10"	153"	100"	6 Gal	81	41	82	35,000	80	15"/Opt16"
RF335BHS	12445	9185	2045	7140	3260	33'6"	153"	100"	6 Gal	81	82	82	35,000	80	15"/Opt16"
RF392BHS	13755	10405	1755	8650	3350	38'9"	153"	100"	6 Gal	81	82	82	40,000	80	15"/Opt16"

# Features On your Roamer

## Travel Trailers



Convenience Center



Bright LED  
Tail Light

## Fifth Wheels



Convenience  
Center

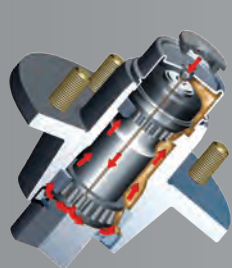


4-Point Leveling and  
Stabilizing System



Slide-out LP  
Bottles  
80 Lbs Capacity

## Fifth Wheels & Travel Trailers



E-Z Lube™ Axles  
Repack Your Bearings  
Without Disassembly



Trailer  
E-Z FLEX  
Suspension



Compression  
Latches



Extended Water  
Spout



Large Stainless  
Steel Entry Door  
Grab Handle



"Smart Cord"  
With LED Light  
Power Confirmation



Full View  
Vented Entrance  
Door



Interior Features	Roamer T/T	Roamer F/W
Interior Width (Without Slides) 96"	Std	Std
Slide Out Height	5'7"	6'5"
42" Deep (Main Slide)	Std	Std
Residential Carpeting and Rebound Padding	Std	Std
ArmStrong® Flooring	Std	Std
High Output Range with Large 17" Oven	Std	Std
Maple Glazed Hardwood Doors	Std	Std
Full Extension Drawer Guides with Steel Ball Bearings	Std	Std
Fluorescent Light with Night Light over Galley Sink	Std	Std
Pull Out Trash Can	Std	Std
High Pressure Laminated Counter Tops	Std	Std
Sink Covers	Std	Std
Residential Size Sink Strainers (3")	Std	Std
Extra Large Pots and Pans Drawer in Galley	Std	Std
Sky Light Over Shower or Tub	Std	Std
Swivel Rocking Chairs (On Select Models)	Std	Std
Porcelain Toilet with Foot Flush and "Water Saver"	Std	Std
Cable Hook Up	Std	Std
Direct Satellite Connections to each TV Jack	Pkg	Pkg
Insulated Slide Floors	Pkg	Pkg
LCD TV in Living Room	Pkg	Pkg

Interior Features	Roamer T/T	Roamer F/W
80" Innerspring Mattress	Std	Std
Deluxe Bedspread and Pillow Shams	Std	Std
1 Cubic Ft. Microwave	Std	Std
Full System Electronic Monitor Panel	Std	Std
Hide-a-Bed	Pkg	Pkg
Galley Sink Front Tip-out Trays	Pkg	Pkg
Entertainment Center DVD/CD/MP3/AM/FM/Stereo	Pkg	Pkg
Pull Out Pantry	Pkg	Pkg
6 Cubic Ft. Refrigerator with "Custom Temperature Control"	Pkg	Pkg
Auto Ignition Furnace	Pkg	Pkg
19" LCD TV in Bedroom	Opt	Opt
Outside Dual Speakers by Door side	Pkg	Pkg
TV Antenna with Power Booster	Pkg	Pkg
Exterior Features		
Utility Center (Tank Flush, Dump Valve, Spray Hose, TV, Water, and Electric)	Std	Std
Dexter "EZ LUBE" Axles	Std	Std
"EZ Flex" Rocker Arm Suspension	Std	Std
Front Electric Jacks	Opt	Std
"Heavy Duty" Scissor Stabilizer Jacks	Std	N/A
Exterior Security Lights	Std	Std
4-Point Leveling and Stabilization System	N/A	Std
Optional Aluminum Wheels & Tire	15"	16"

Exterior Features	Roamer T/T	Roamer F/W
"Double" Extension Gutter Rails	Std	Std
Stainless Steel Assist Grab Handle	Std	Std
Amp Service	30 A	50 A
Rear Ladder	Opt	Opt
Water Heater Bypass Kit	Std	Std
Winterizing Siphoning Hose	Std	Std
Heavy Tint Safety Glass	Std	Std
Gel Coated Fiberglass Walls	Std	Std
Compression Latches	Std	Std
Under Mount Crank Down Spare Tire	Std	Std
Gas/Electric Quick Recovery Water Heater	6 Gal	6 Gal
Winegard® TV Antenna with Power Booster	Pkg	Pkg
Carefree Power Awning	Pkg	Pkg
Heated and Enclosed Underbelly	Pkg	Pkg
Double Insulated Baggage Door	Pkg	Pkg
Slide Out Awning Covers	Opt	Opt
R9 Walls, R14 Roof, R9 Floor	Std	Std
Outside Cook Center	Std	N/A
Larger Triple 9" Entry Door Steps	Std	Std
BBQ Grill	Opt	Opt
Power Tongue Jack	Opt	N/A
Radial Tires	Std	Std
Dual LP with Slide Trays (80 Lbs Capacity)	N/A	Std

# Roamer



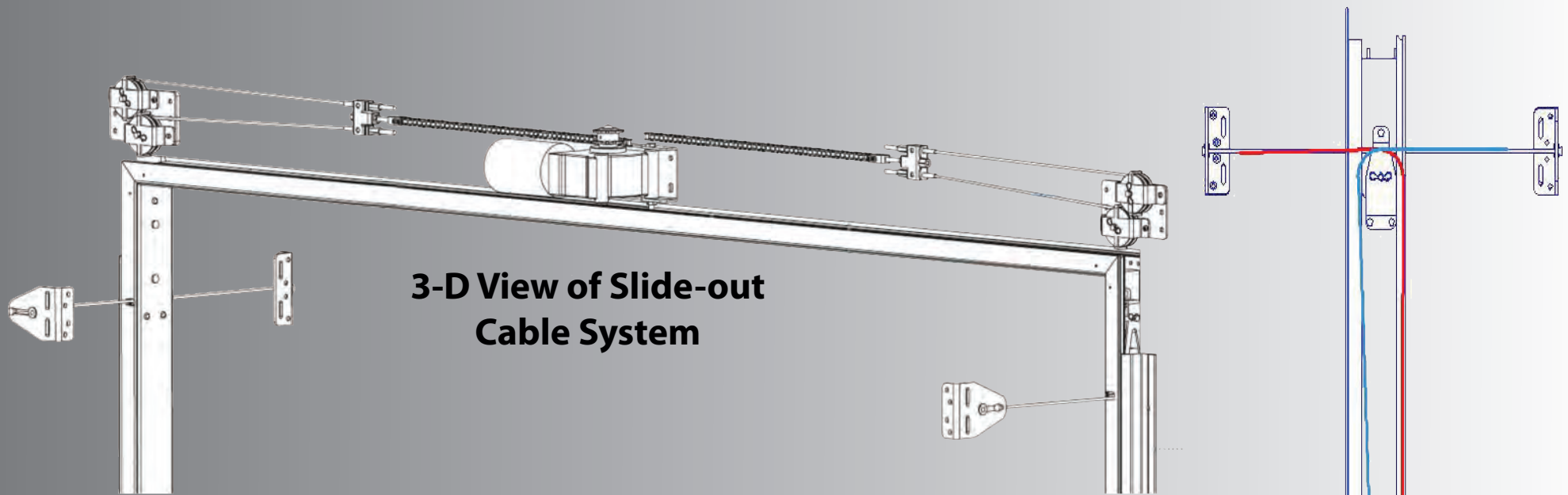
## Roamer

Roamer Features

Comparative Competition

- |                                     |   |                          |
|-------------------------------------|---|--------------------------|
| <input checked="" type="checkbox"/> | 2 Year Limited Warranty                 | <input type="checkbox"/> |
| <input checked="" type="checkbox"/> | 100" Exterior Width                     | <input type="checkbox"/> |
| <input checked="" type="checkbox"/> | 80" Interior Height                     | <input type="checkbox"/> |
| <input checked="" type="checkbox"/> | 42" Deep Main Slide                     | <input type="checkbox"/> |
| <input checked="" type="checkbox"/> | All Slides with 4 Corner Compression    | <input type="checkbox"/> |
| <input checked="" type="checkbox"/> | SymaLITE Walls "Strength From Within"   | <input type="checkbox"/> |
| <input checked="" type="checkbox"/> | All Four Exterior Walls Laminated       | <input type="checkbox"/> |
| <input checked="" type="checkbox"/> | Lighter Weight                          | <input type="checkbox"/> |
| <input checked="" type="checkbox"/> | Heat Ducted to Enclosed Holding Tanks   | <input type="checkbox"/> |
| <input checked="" type="checkbox"/> | Outside Kitchen (Travel Trailers)       | <input type="checkbox"/> |
| <input checked="" type="checkbox"/> | Secure Baggage Door Compression Latches | <input type="checkbox"/> |
| <input checked="" type="checkbox"/> | HPL Counter Top Edging                  | <input type="checkbox"/> |
| <input checked="" type="checkbox"/> | Pull Out Waste Basket                   | <input type="checkbox"/> |
| <input checked="" type="checkbox"/> | Pull Out Pantry                         | <input type="checkbox"/> |
| <input checked="" type="checkbox"/> | Full Extension Drawer Guides            | <input type="checkbox"/> |
| <input checked="" type="checkbox"/> | 80" Residential Size Bed                | <input type="checkbox"/> |
| <input checked="" type="checkbox"/> | Outside Convenience Center              | <input type="checkbox"/> |



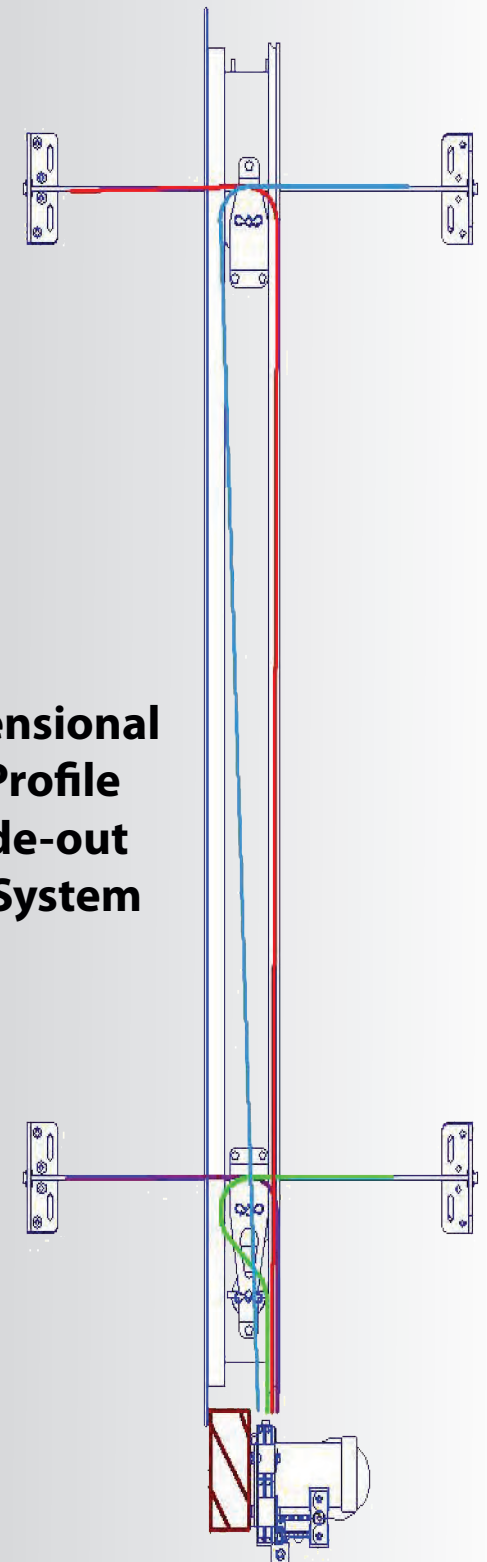


**3-D View of Slide-out  
Cable System**

## **10 Reasons Why... Accu-Slide**

- 1. Above floor design means more storage area for your RV**
- 2. Lightweight design promotes fuel savings**
- 3. High strength stainless steel aircraft cable is used for control**
- 4. Cable control at all 4 room corners helps stop leaks**
- 5. Working components are in your RV, safe from the elements**
- 6. Locking motor secures room in or out to help stop leaks**
- 7. Above floor design minimizes maintenance requirements**
- 8. A clean system - no leaky hydraulic lines or greasy drives**
- 9. Smooth, quiet room movement - no jumping or jerking**
- 10. It's built in the U.S.A. and backed by BAL since 1972**

## **1- Dimensional Side Profile Of Slide-out Cable System**





**Haversham**



**Sedonna**



**Orlando**



**Sheridan**



**Lifelong**





**16<sup>th</sup> Annual RVDA DEALER  
SATISFACTION INDEX**

**Open Range RV Company is extremely proud and honored to have received the 2009 "Quality Circle Award" from the RVDA. It gives us great satisfaction that our dealers have distinguished our company and product from the competition. Open Range RV vows to continue the commitment to a quality product, company, and employee base.**

**We at Open Range RV hope you choose to join our ever growing  
RV family and that you remember to...**

**Enjoy The Journey!**



Open Range RV Company, 3195 N. St. Rd. 5 Shipshewana Indiana 46565

Phone: (260) 768-7771 - [www.openrangerv.com](http://www.openrangerv.com)

Due to continual research and advances, manufacturer reserves the right to change specifications, design, price, and equipment without notice, and assumes no responsibility for any error in this literature. Some items shown are not included as standard or optional equipment.

® 2010, Open Range RV Company, Shipshewana, Indiana

Your Open Range Dealer:

--