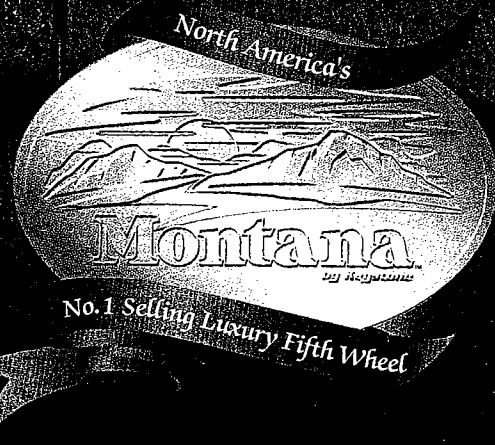


Montana

"Built by People who know RVing"

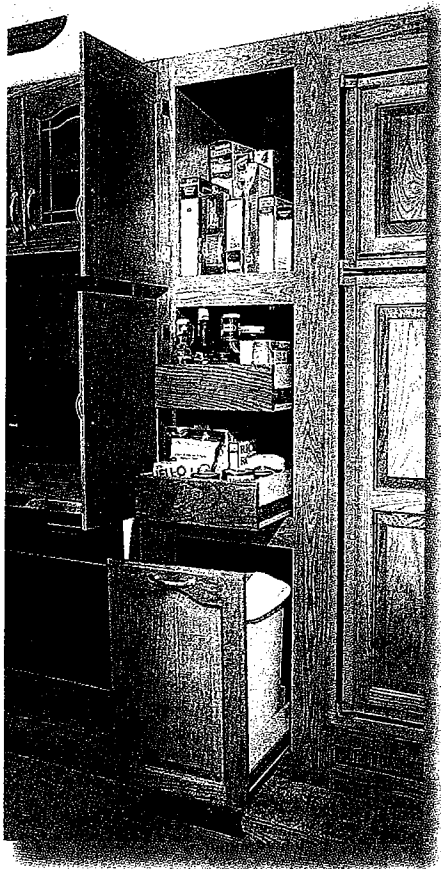
2003



It's Your Turn...

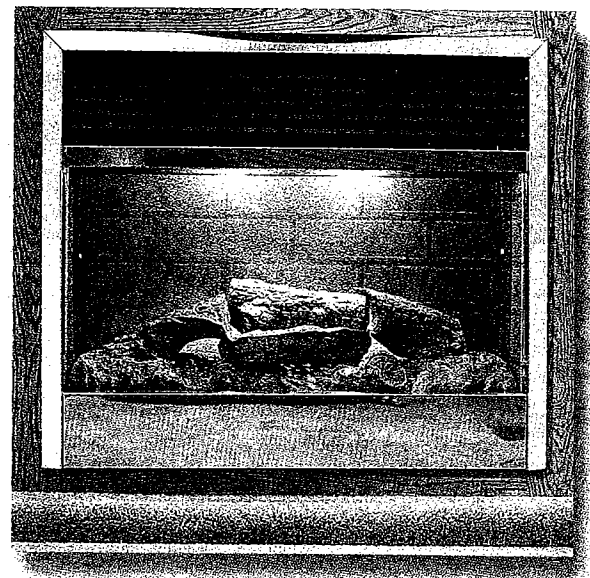
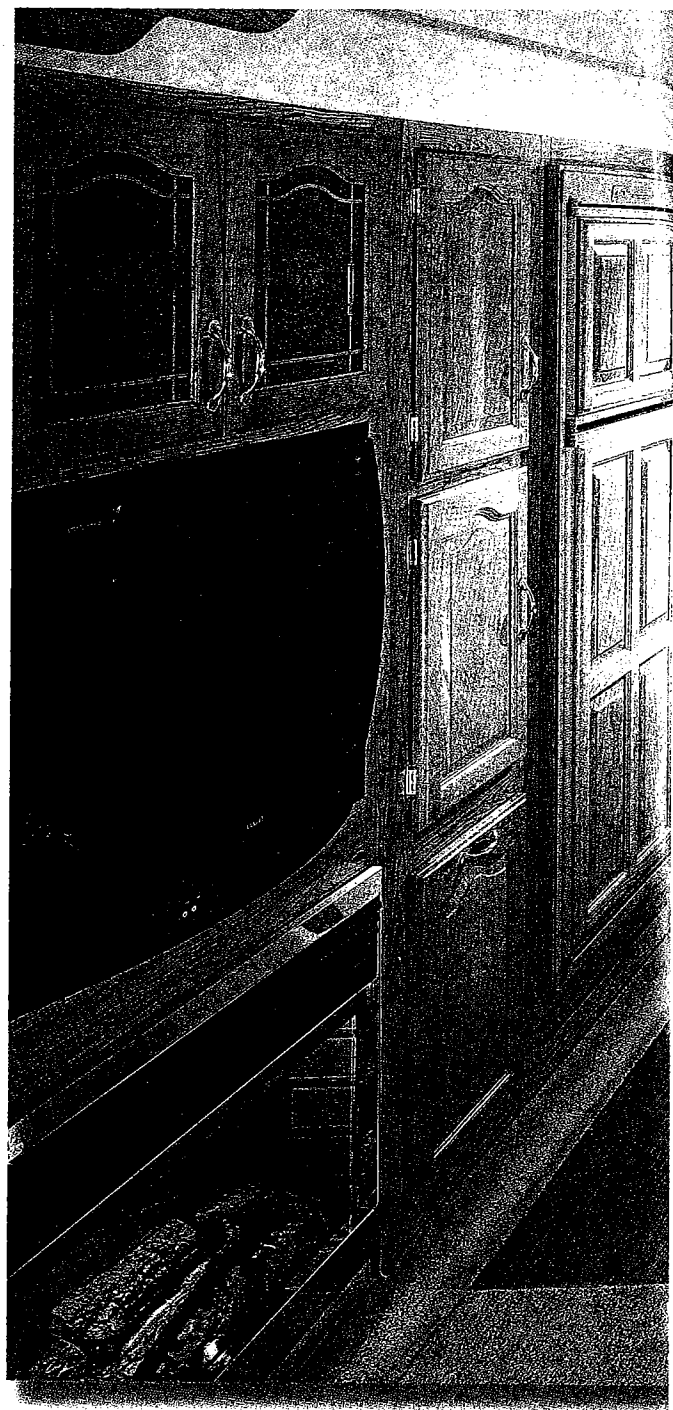
"The fit and finish of our Montana fifth wheel is excellent. The trailer is constructed of good materials and constructed well. Our new Montana weighs 4,000 pounds more, but tows as easily as our 5,200-pound travel trailer did. We are very happy about our purchase, and recommend it to others."

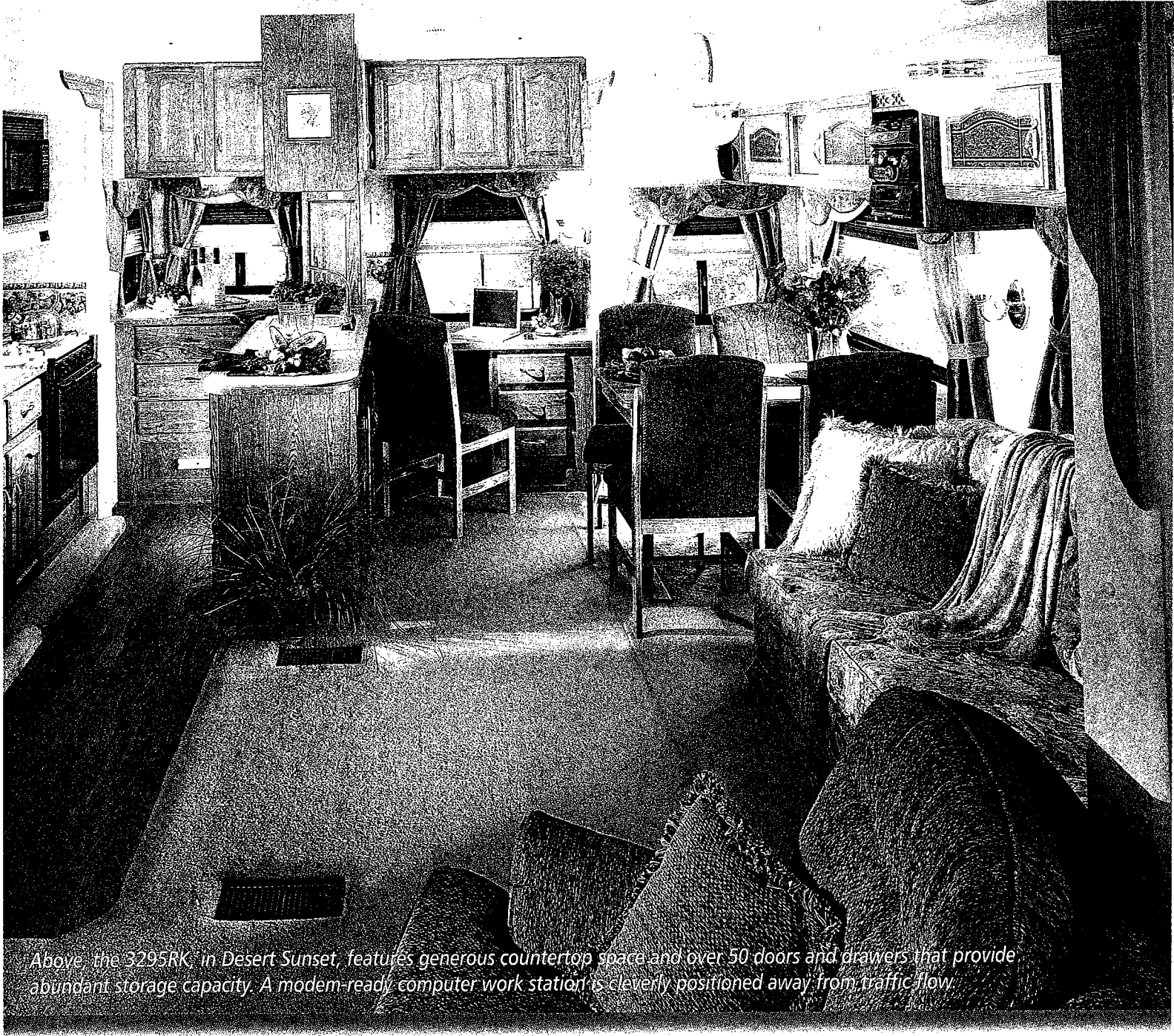
Steve and Evelyn, Texas



The convenient pantry features a high-rise top shelf for large items plus two roomy pull-out drawers and even a sliding waste container compartment.

Perhaps you'll decide to add the warmth and charm of an electric fireplace to your Montana. The 5,100 BTU heater will take the chill off those cooler mornings.



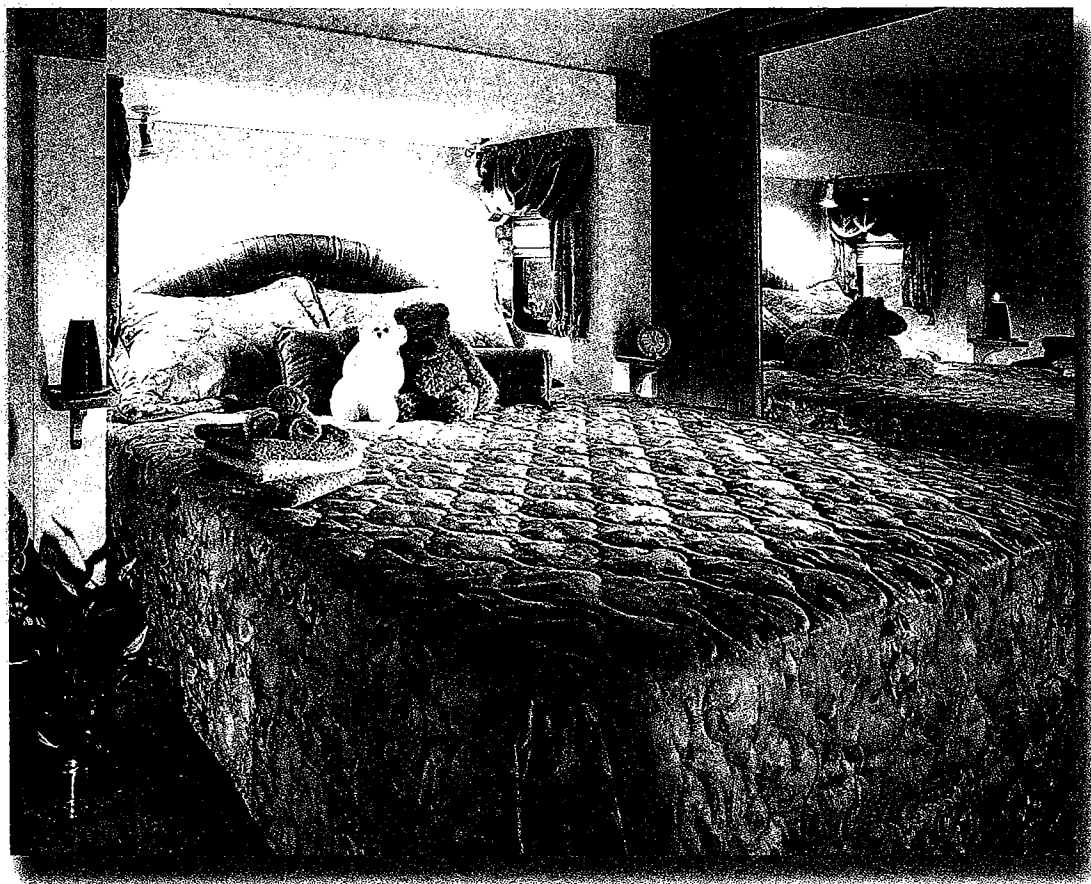


Above, the 3295RK, in Desert Sunset, features generous countertop space and over 50 doors and drawers that provide abundant storage capacity. A modem-ready computer work station is cleverly positioned away from traffic flow.

Move up to Montana.

The history-making Montana has truly redefined today's fifth wheel. Thousands of satisfied RV owners have chosen Montana, realizing that it is simply the finest fifth wheel product in North America. Ask any experienced RVer—you'll hear why Montana is the talk of the campground. With an established reputation for fine craftsmanship, superior towability and interior and exterior style, Montana has set a higher standard for comfort and convenience. For 2003, we've added even more great details in response to what Montana owners have told us they want. Now it's your turn. We invite you to join the legions of RV enthusiasts who have already moved up to Montana.

With bedroom slide-room windows on the sidewalls, you can use the rear wall for support as you lean back against your pillows to read or watch TV. Also, you'll have no worries about cold drafts near your head while you're sleeping.



Montana Comfort.

Carefully coordinated room decor in three fashionable color schemes, premium-grade carpeting, upholstery and luxuriously lined draperies with designer valance treatments are all elements which add to Montana's residential feeling. Thoughtful touches like huge, fully vented windows, extra-tall slide-out rooms which include "plate depth" overhead cabinets, entertainment centers and extra-thick queen-size mattresses covered with quilted designer spreads and pillow shams will further ensure your comfort. Our goal is to make every moment you spend in your Montana truly carefree and completely relaxing.

This spacious triple dresser is a customer favorite. An oversized TV cabinet is combined with ample storage space in the overhead area.



