

GULF STREAM COACH

CLASS A DIESEL MOTORHOMES

2005

SCENIC CRUISER



*The Ultimate in Luxurious Living*





# SCENIC CRUISER



*SUNROOM • MODEL 8411*

## LUXURIOUS INTERIOR...

The upscale decor of the Scenic Cruiser is appointed with high quality Comfort Plus Furniture upholstered with soft touch ultra-leather.

This professionally designed interior accented by bead lighting along the sides of the coach, sculptured carpet and elegant tile make this a truly magnificent coach.



*MAIN LIVING QUARTERS • MODEL 8411*



*RESIDENTIAL SOFA • MODEL 8411*



*KITCHEN • MODEL 8411*

## HIGH CLASS LIVING...

The main living quarters of the Scenic Cruiser is not only beautiful, but functional, as well. The kitchen area features a three burner range with hood, convection microwave, dual basin sink with residential faucet and sprayer, Large two door refrigerator and spacious countertops for you to create your favorite meals.

The Gulf Stream exclusive sunroom on the 8411 includes a free standing dinette and soft touch recliner for you to sit back and enjoy the view while relaxing or enjoying company.

With the 8411 Home Theater package you have a top-of-the-line video projector, secondary LCD TV Screen, drop down screen and Sony Dream Home Theater system with 5.1 Gulf Stream G-sound speakers to make your coach into a high class movie theater.\*

\*Popcorn not included.







# SCENIC CRUISER



**CEDAR LINED STORAGE • MODEL 8411, 8408**



Gulf Stream's Two-Zone living concept gives you 30% more room to utilize throughout the day. By adding a sitting area to the bedroom and giving you the ability to shut the bedroom off from the rest of the coach, it allows you to enjoy TV, read or sleep with peace and quiet.



**BATHROOM • MODEL 8411**



**BEDROOM • MODEL 8411, 8408**



**WARDROBE • MODEL 8411, 8408**

## SPACIOUS BEDROOM...

This feature packed bedroom also gives you washer/dryer hookups for the optional washer/dryer appliance in the 8410, a computer desk/vanity in the 8411 and 8408, a 20" flat screen television and more wardrobe storage than you would imagine.



*BEDROOM • MODEL 8411, 8408*



# SCENIC CRUISER

## *Exterior Features...*

### **CONTEMPORARY LOOKS...**

Full body paint in three color options protects the exterior and offers a cutting edge look. Gulf Stream delivers the options you want to protect your investment, suit your budget and entertain your visual preference.

### **EXTERIOR STORAGE...**

The practice of raised rail construction delivers more ceiling height while increasing the amount of underbody storage space. Gulf Stream Coach uses one piece steel boxes in our underbody storage compartments. They are carpeted on the inside to protect your belongings while traveling down the road and coated with anti-corrosion paint on the underside to prevent deterioration. Gulf Stream's storage compartments feature interior lighting and slam latch doors. Two compartments also feature electrical outlets to add to the list of conveniences offered to allow you to safely load and unload with ease.



***BURGANDY EXTERIOR GRAPHICS***



***BLUE EXTERIOR GRAPHICS***



***GOLD EXTERIOR GRAPHICS***



***SPACIOUS BASEMENT STORAGE***

# Rain or Shine

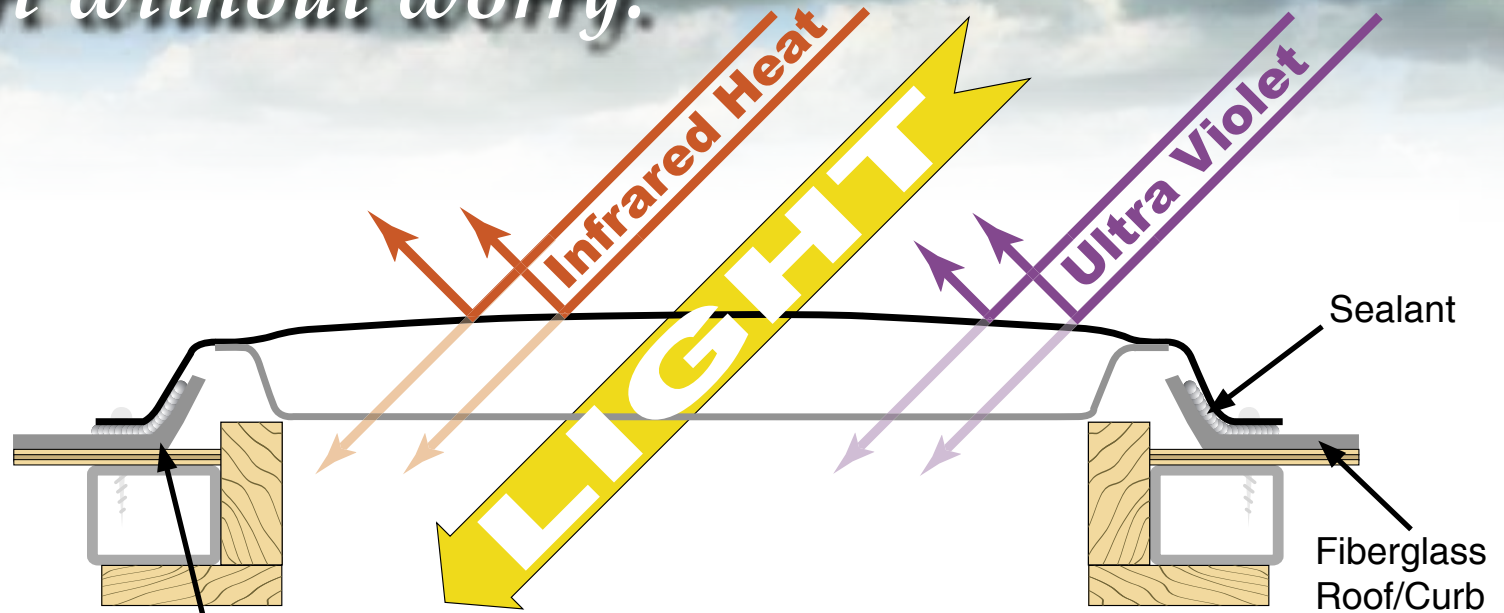
Comfort without worry.



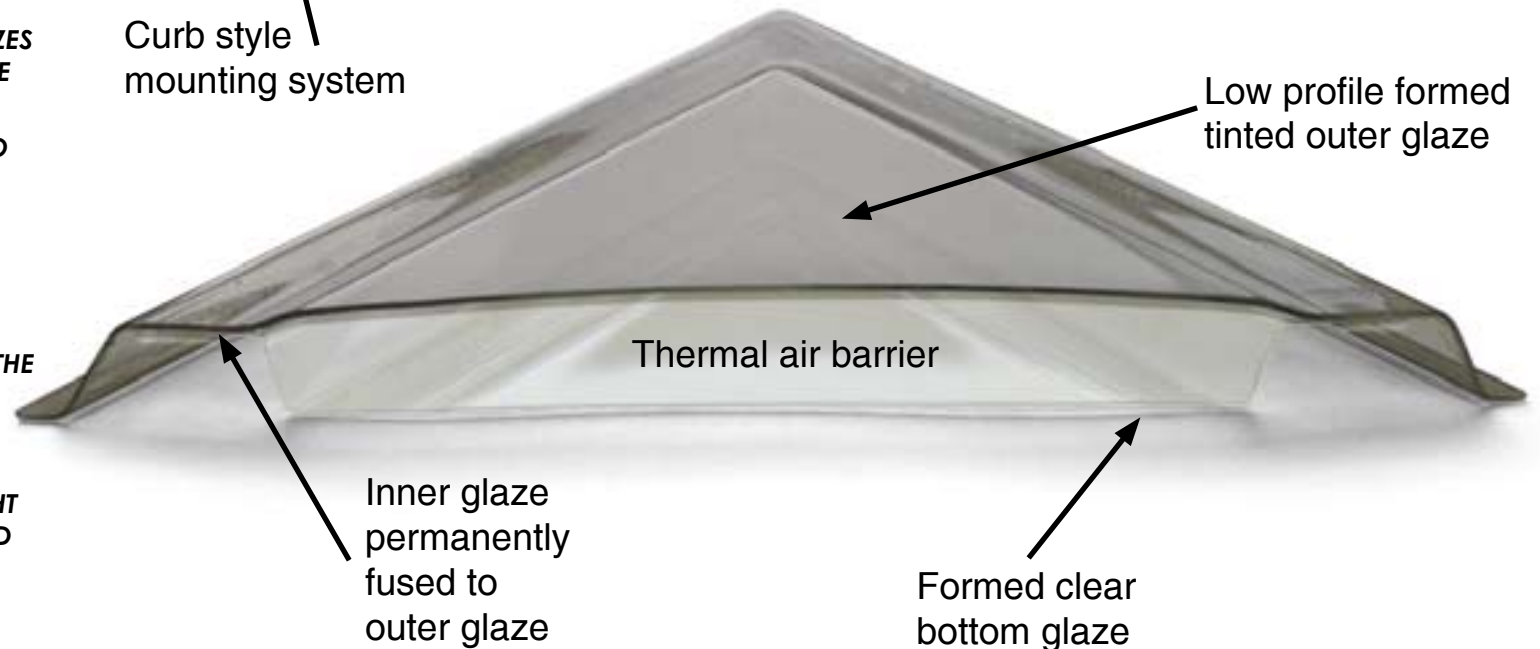
## INNOVATIVE SUN ROOM DESIGN... Patent Pending

Open panoramic views, natural lighting and spacious freestanding dinette are just a few of the benefits of the Gulf Stream sun room. More important, is the peace of mind knowing the sun room's skylights are designed to protect the interior from damaging UV light, prevent leaks and aid in climate control.

- **DESIGNED BY GULF STREAM EXCLUSIVELY FOR SLIDEOUT ROOMS.**
- **CURB STYLE INSTALLATION ELIMINATES LEAKS.**
- **BOTH TOP AND BOTTOM GLAZES ARE FORMED OF UNBREAKABLE POLYCARBONATE.**
- **THE OUTER GLAZE IS TINTED TO MINIMIZE SOLAR HEAT GAIN. THE BOTTOM GLAZE IS CLEAR.**
- **COLLECTIVELY, BOTH GLAZES ELIMINATE 97% OF THE DAMAGING UV LIGHT.**
- **ALL WALLS AND CEILING OF THE SUNROOM ARE INSULATED FOR THERMAL AND SOUND CONTROL.**
- **EVERY WINDOW AND SKYLIGHT IN THE SUN ROOM IS EQUIPPED WITH A DAY/NIGHT SHADE.**



Curb style  
mounting system





# Scenic Cruiser Exclusive Features & Benefits

**SOLID  
HARDWOOD  
CABINETRY**



**PREDRILLED  
HARDWOOD  
CONSTRUCTION**

Our residential style cabinets are constructed of solid hardwood doors and fronts that are predrilled and screwed. They are then stained and top coated with a furniture grade finish that provides long lasting beauty and durability as well as adding strength and quietness to your motorhome.

**COMPETITOR'S CABINETY**

Other companies use wrapped cabinet fronts prone to peeling, fading and tearing. The softer composite wood used does not hold screws as well as hardwood resulting in loss of strength and squeaking. Discoloration will degrade the beauty and lower the value of the motorhome.

**GALVANIZED  
STEEL  
STORAGE  
COMPARTMENTS**

Seamless, carpeted, galvanized steel storage compartments safely cradle your valuables. Rust protective paint and foam sealed for extended life and a quiet ride.



Dual metal H-Ducted air conditioning system with foil bubble wrapped insulation for superior climate control.

**Excellent Weathering** - Maintaining the vehicle's quality appearance enhances its resale value.

**Seamless  
FIBERGLASS ROOF**

**Tear Resistance** - Flexroofs hard abuse resistant finish resists tearing, a condition that can cause leaks and lead to expensive repair.

**Low Maintenance** - Road grime can easily be removed with normal cleaning maintenance. Rubber chalking due to solar breakdown of the roof surface is eliminated, preserving the original appearance and resale value of the vehicle.

**Stain Resistance** - Fiberglass Flexroof is designed to resist staining and maintain its quality appearance.

**Structural Integrity** - Unlike conventional EPDM rubber roof membranes, Flexroof is a structural component of the roof system.

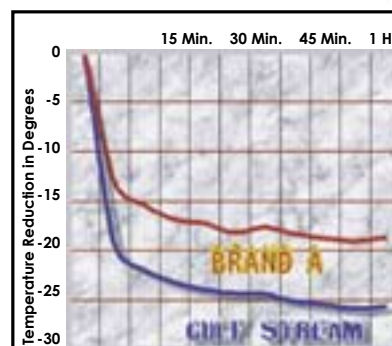
**Textured Fiberglass** - Helps dissipate heat and prevents tree limbs from tearing or scratching your roof.



Comfort Plus furniture by Gulf Stream Coach features residential styling, solid construction, total comfort and a comprehensive warranty.

**FLUSH FLOOR**  
Slide out rooms

Gulf Stream offers true flush floor slide out rooms to give you more headroom in the slide and eliminates the step up into the slide room that you will experience in many of our competitors motorhomes.



**GULF STREAM VS. BRAND A**  
Cool Down Comparison

- At 15 minutes, Gulf Stream cooled 7 degrees cooler.
- At 30 minutes, Gulf Stream cooled 9 degrees cooler.
- At 1 hour, Gulf Stream cooled 9 degrees cooler.

Finally, empirical data demonstrating the efficiency and performance of a roof air conditioning system versus a floor air conditioning system.

Winner: Roof air conditioning by Gulf Stream

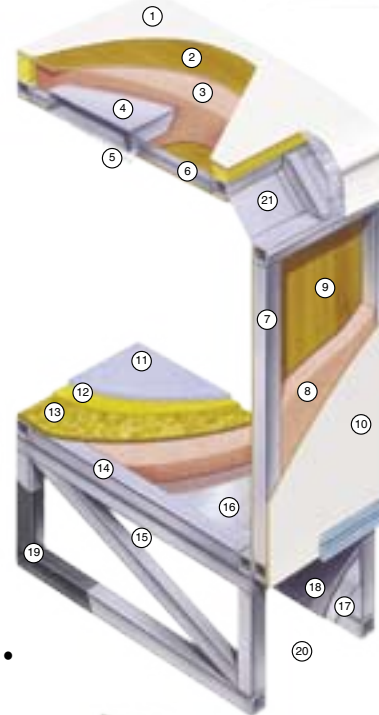


# Cradle of Strength



Unlike traditional plywood and foam seating, Comfort Plus dinette seating features the strength of steel and the comfort of a sprung cushion.

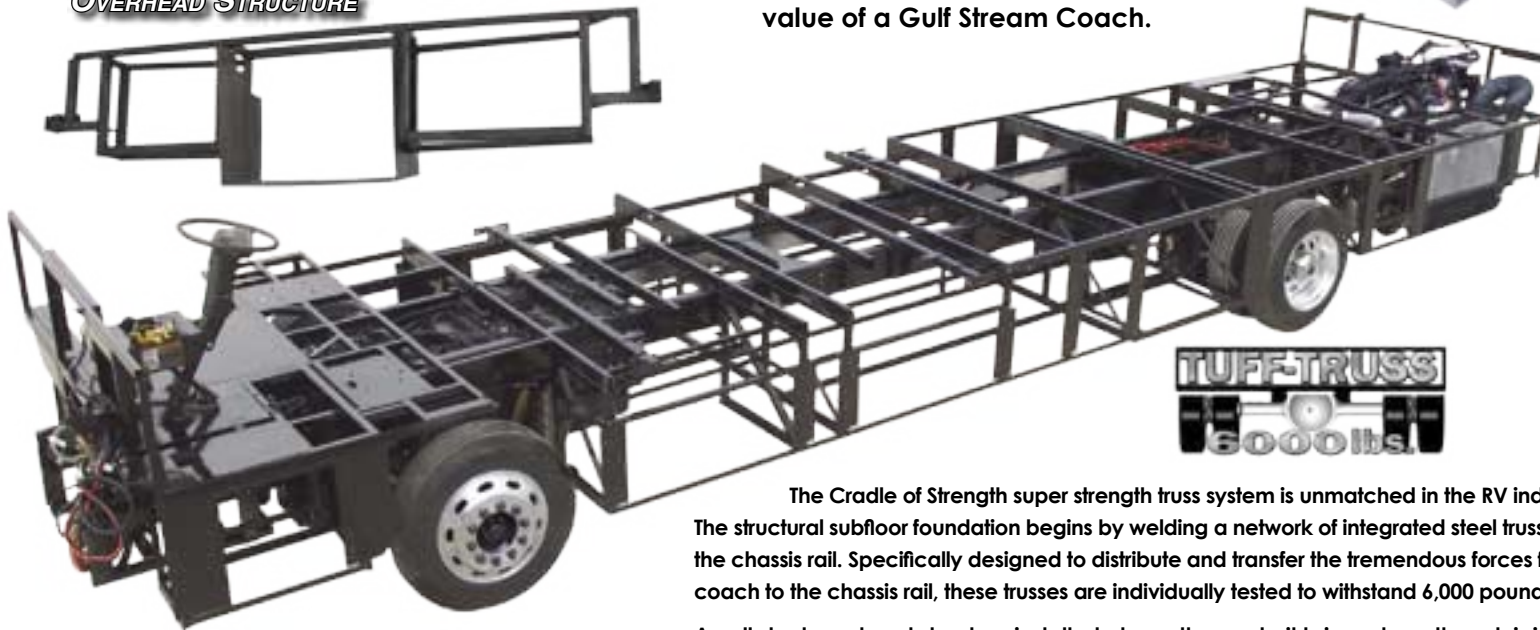
1. Seamless Molded/Laminated Fiberglass Roof For Greater Energy Efficiency and Dependability.
2. Luan Decking for Additional Strength.
3. Molded, High Density EPS (Expanded Polystyrene) Roof Brick Insulation - Provides Consistent Insulation Value as well as Superior Dimensional Rigidity.
4. One-Piece Formed Aluminum Air Conditioning Duct, Completely Surrounded By EPS Insulation.
5. Bubble-Wrapped Foil Insulation Provides Superior Insulation and Helps Prevent Condensation.
6. Rugged Welded Tubular Aluminum Roof Framing.
7. Rugged Heavy-Gauge Tubular Aluminum, Fixture Welded to Form the Sidewall Framing.
8. High-Density EPS Insulation Provides Superior Lamination and Bonding Characteristics and Insures Greater Energy Efficiency.
9. Interior Wall Panels Securely Laminated to Sidewall Framing.
10. "Super Slick" Fiberglass Exterior Vacuum-bond Laminated to Sidewall Framing for Lasting Beauty and Durability.
11. High-Quality Stain-Resistant Carpeting Available in Designer Coordinated Colors.
12. Extra-Thick Padding Under Carpet Provides Extra Comfort and Increases Carpet Durability.
13. Seamless Structurewood Floor Decking Laminated to Steel Floor Structure Assures a Quiet, Long-Lasting Rigid Floor.
14. Heavy-Gauge Tubular Steel Framing, Fixture Welded for Extra Strength and Stability.
15. Heavy-gauge Tubular Steel Framed, Fixture Welded Floor Truss System Provides the Strongest Foundation in the Industry.
16. Seamless Layer of Galvanized Steel Securely Laminated to the Steel Floor Framing.
17. Galvanized Steel Used to Form Each Storage & Holding Compartment.
18. Durable All-Weather Carpeting Completes Each Accessible Storage Compartment, Providing Extra Protection for Luggage and Valuables.
19. Rust-Prohibitive Paint Coating Applied to All Steel Framing Assures Corrosion and Rust Protection.
20. The Industry's Strongest, Most Spacious Exterior Storage Compartments.
21. Reinforced Heavy-Gauge Steel "W" Transition.



Sand Carpet Available with Tan or Green. Brown Carpet Available with Blue or Mocha.

**TAKE THE TIME TO COMPARE...**  
and you will see the exceptional value of a Gulf Stream Coach.

**ALL STEEL  
OVERHEAD STRUCTURE**



The Cradle of Strength super strength truss system is unmatched in the RV industry. The structural subfloor foundation begins by welding a network of integrated steel trusses to the chassis rail. Specifically designed to distribute and transfer the tremendous forces from the coach to the chassis rail, these trusses are individually tested to withstand 6,000 pounds each.

An all steel overhead structure installed above the cockpit brings strength and rigidity to the upper portion of the coach providing a safe strong platform to install a TV that will not break free in an impact while maximizing overhead storage.

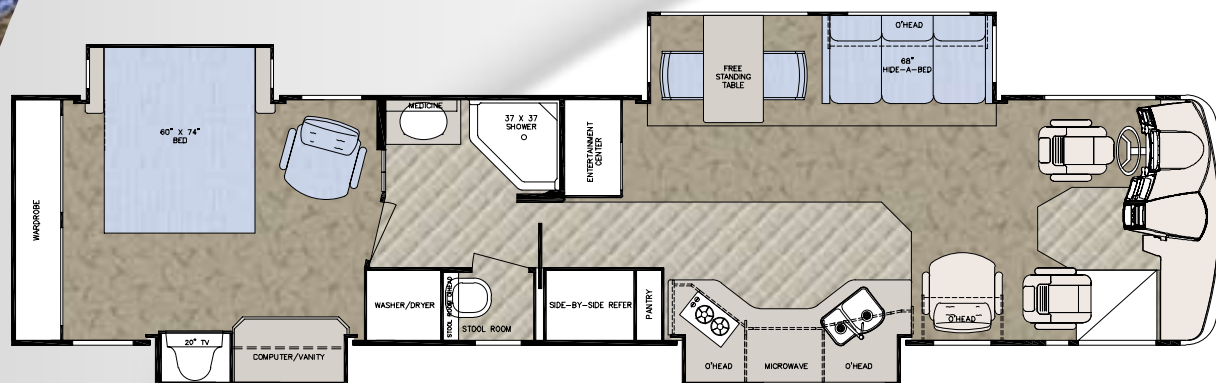
**NICKEL PLATE HARDWARE**





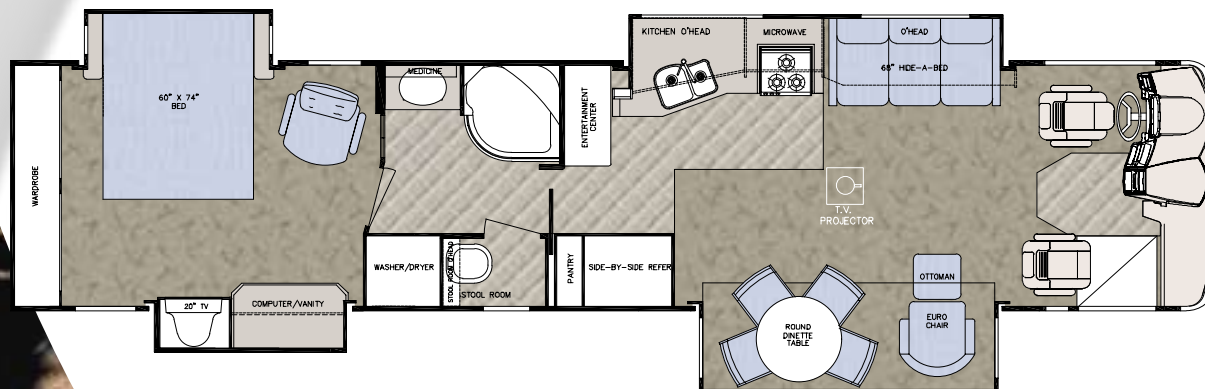
# SCENIC CRUISER

MODEL 8408



Chassis	Freightliner
Engine	400 Cummins
Fuel	150
GVWR	32,000
Length	41'-4"
Width	100"
Height w/AC	12'-3"
Interior Height	84"
Wheelbase	276"
Fresh	100 gal.
Grey	75 gal.
Black	75 gal.
LP Gas Tank	150 lbs.
Furnace (BTU's)	40,000/25,000
Water Heater w/DSI	10 gal.

MODEL 8411



Chassis	Freightliner
Engine	400 Cummins
Fuel	150
GVWR	32,000
Length	41'-4"
Width	100"
Height w/AC	12'-3"
Interior Height	84"
Wheelbase	276"
Fresh	100 gal.
Grey	75 gal.
Black	75 gal.
LP Gas Tank	150 lbs.
Furnace (BTU's)	40,000/25,000
Water Heater w/DSI	10 gal.





## Interior & Decor

- White Laminate Interior
- Deluxe Carpet
- Ceramic Tile
- Privacy Curtain
- Decorator Mirror
- Valences, Lambrequins & Shades on Windows
- Vinyl Ceiling Liner
- Interior Handrail
- Flush Floor Slides
- Sony Dream Home Theater System With Surround Sound and DVD/CD/VCR Player
- 5.1 G-Sound Speaker System
- Solid Surface Countertops
- Decorative Beveled Mirror Doors Above Sofa
- Decorative Crown Ceiling Molding
- Rope Lighting Along Ceiling
- Silverware Drawer

## Furniture

- Queen Bed, Innerspring Mattress, Bedspread and Pillow
- Free Standing Dinette w/ 2 Chairs
- Soft Touch Recliner (8408)
- Soft Touch Euro Recliner w/ Ottoman (8411)
- Leather HAB Sofa
- Bedroom Chair
- Vanity Bench

## Bath & Water

- Power Vent in Bathroom
- Porcelain Pedal Stool w/ Sprayer
- Shower w/ Glass Door (8408)
- Radius Tub/Shower w/ Radius Glass Door (8411)
- City Water Hookup
- Skydome in Bath
- Deep Dual Basin Kitchen Sink
- Holding Tank Flush Kit
- Outside Rinse and Wash Station
- 10 Gal DSI Water Heater
- Water Purifier
- Water Manifold System

## Appliances

- 2 Burner Range Top (8408)
- 3 Burner Range Top (8411)
- LG 2-way Four Door Refrigerator
- 30" Convection Oven/Microwave w/ Power Range Hood
- LP Leak Detector
- Carbon Monoxide Detector
- 150 lb. LP Tank
- 15,000 BTU Low Profile A/C w/ Ducted Roof Air (Front)
- 15,000 BTU Low Profile A/C w/ Ducted Roof Air (Bedroom)
- 40,000 BTU Furnace (Front)
- 25,000 BTU Furnace (Rear)

## Electrical Systems

- 4 6V Batteries (coach 12V power)
- 2 12V Batteries (chassis 12V power)
- Emergency Start Switch
- ON/OFF Block Heater Switch
- Battery Disconnect
- 2000 watt Inverter
- 50 amp service w/ Power Cord Reel & Automatic 110 Changeover
- 7.5 Onan Diesel Generator
- Generator Slide out Tray
- Monitor Panel
- TV Antenna w/ Amp & Boost
- Cable TV Ready
- Back-up Monitor
- 20" Flat Screen Television (Bedroom)
- DSS Prep
- Porch light
- CB Antenna
- Remote Control Spotlight
- Deluxe Air Horns
- Washer/Dryer Prep.
- Overhead Defrost Blower
- Driving Lights

## Exterior Construction

- One Piece Windshield
- Full Paint Exterior w/ Painted Graphics
- Clear Coat
- Wet Sand & Hand Buffed
- Superslick Fiberglass Exterior
- Laminated Fiberglass Roof
- Welded Aluminum Cage Construction
- Automatic Hydraulic Leveling System
- Laminated Floor w/ Metal Underbelly
- Foam Seal & Undercoating
- Thermalpane Windows

- Outside Lighted Grab Handle
- Lighted Trunk Boxes
- One Piece Aluminum Skin Slam Latch Basement Doors
- Fully Insulated Engine Doghouse
- Slideout Toppers
- Deluxe Awning
- Dead Bolt Lock Entry Door
- Fiberglass Caps
- Electric Step
- Hitch
- Logo Rear Rock Guard
- 3-speed Attic Fan w/ Rain Sensor
- Arctic Package
- Garden Hose Reel and Air Hose in Basement
- Chrome Front Air Horns
- Remote Control Spotlight
- Front and Rear Mudflaps
- Rear Logo Rock Guard

## Chassis

- 32,000 GVWR Freightliner Custom Diesel Side Radiator Chassis w/ Alcoa Rims, Smart Steering Wheel and Adjustable Pedals
- 400hp Cummins Diesel Engine
- Allison Transmission
- Full Air Suspension
- Full Air Brakes
- CD Player - AM/FM Stereo w/ 4 speakers
- Dash A/C
- Cruise Control
- Heated and Remote Sideview Mirrors
- Three Point Seatbelts
- 2-Tone Leather 6-way Power Pilot and Copilot Seats w/ Copilot Buddy Seat
- Map Lights

## Popular Options

- ☐ Cherry Hardwood Interior
- ☐ Heat Pumps
- ☐ Optoma Home Theater Package
  - Optoma High-definition Projector
  - Motorized Drop Down Screen
  - Secondary 17" LCD Television
- ☐ TRAC Vision In-Motion Satellite System
- ☐ 6-Disc CD Changer
- ☐ Dual Extender Storage Compartment Slide Tray
- ☐ Electric Awning Package (A&E)
  - Main Awning
  - Entrance Door Awning
  - Sunroom Slide out Topper
  - Window Awning
- ☐ Hot/Cold Drink Tray
- ☐ Radius Tub/Shower Door w/ Radius Glass Door (8408)
- ☐ Comfort Plus Booth Dinette I.P.O. Freestanding Dinette (8408)
- ☐ Vented Combo Washer/Dryer
- ☐ Euro Recliners w/ ottoman I.P.O. Recliner
- ☐ 2 Folding Chairs

**Coach-Net®**  
24 HR. EMERGENCY ROADSIDE ASSISTANCE

- One Year Coach-Net Membership
- Towing and Winching
- Flat Tire Change
- Mobile Mechanic
- Delivery of emergency Fluids
- Jump-Start / Battery Boost
- Lockout



Rally and caravan participants spend time touring attractions, enjoying fabulous meals, taking in area highlights and shows, while having plenty of free time to relax or explore on their own. Our pre-scouted events include knowledgeable staff to assure you of the finest routes, the tastiest restaurants and the friendliest atmosphere to help make the most out of your RV experience. Special rallies throughout the year also include Gulf Stream supplier seminars, complimentary minor repairs by Gulf Stream technicians, Gulf Stream dealer product displays and round table discussions to voice your product improvement ideas.

The Gulf Streamers RV Club is a valuable benefit to all Gulf Stream owners. Members enjoy staying active and participating in the various rallies and caravans offered throughout the United States and Canada. Others simply enjoy the value of receiving their Main Stream, the club's 44-page newsletter, with all its up-to-date product information, service tips and company highlights. Whether or not group camping is a part of your RV use, everyone can benefit from the Emergency Road Service and Gulf Streamers Insurance options. Both are available at competitive rates with friendly, reliable service. Another great benefit is the 10% Program, where campgrounds throughout the U.S. and Canada provide Gulf Streamers with a 10 percent discount on camping. As a member, you'll also receive discounts on National Theme Parks and special attractions, including RV and travel guides, directories and magazines.





**GULF STREAM**  
COACH, INC.

*Quality, Comfort, Innovation*

### **GULF STREAM FACILITIES...**

Located in the heart of the Amish country, the complex, along with Gulf Stream's affiliate, Fairmont Homes, Inc., covers over 400 acres and includes more than 1.5 million square feet of state-of-the-art manufacturing facilities. With over 20 years of manufacturing experience producing quality Recreational Vehicles, Gulf Stream is the leading manufacturer of high quality and high value RV products that are distributed through a partnership relation with independent dealers who are focused on meeting customer expectations.

### **GULF STREAM EXCEPTIONAL VALUE...**

Your family and friends will feel safe and comfortable wrapped in Gulf Stream's "Cradle of Strength". Comfort, Quietness and Insulation from the elements is what you will experience from Gulf Stream's "Tried and Tested" Motorhomes. Compare... and you will find the exceptional value of a Gulf Stream Motorhome.

POST OFFICE BOX 1005

• YOUR GULF STREAM COACH DEALER •

NAPPANEE, IN 46550



**VISIT**

**WWW.GULFSTREAMRV.COM**

**FOR MORE DETAILED INFORMATION...  
OR CALL 1-800-765-8787-EXT. 3288**

For more information and available options, contact your local Gulf Stream dealer, [www.gulfstreamRV.com](http://www.gulfstreamRV.com) or Gulf Stream Coach, Inc. Gulf Stream Coach, Inc., reserves the right to make changes in prices, colors, materials, components and specifications and to discontinue models at any time without notice or obligation. Gulf Stream Coach, Inc., assumes no responsibility for any error in type or print reproduction of specifications or floorplans in this brochure. Photographs may show equipment or items that are optional and are not included in the purchase price of the coach. Test drive and review a current model at your nearest Gulf Stream dealer. © 2002 Gulf Stream Coach, Inc., Nappanee, Indiana U.S.A.

11/03-SP-10k