

CEDAR CREEK

by Forest River



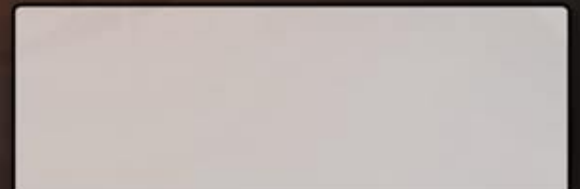
The Smart Choice for the Experienced RV'er

Fifth Wheels by Forest River

Forest River, Inc. / 501 Hawpatch Road / Topeka, IN 46571

Ph: 260-593-2404 / Fax: 260-593-2447

Visit our website at www.forestriverinc.com





CEDAR CREEK

Experience the gracious world of Cedar Creek living. You won't find another fifth wheel that pampers your needs with such style and grace. Fine residential furnishings embellish the interior including a fireplace crowned with a handsome mantel and flanked by lighted glass door bookcases. Every detail, appointment, and design feature blend flawlessly together to create the ambiance of fine living.





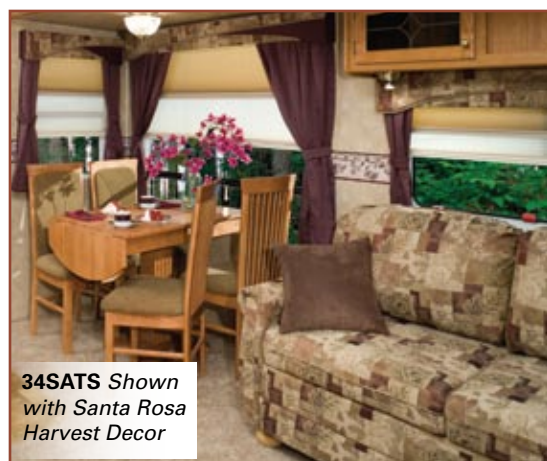
34SATS



34SATS Bedroom



34SATS Bedroom



34SATS Shown
with Santa Rosa
Harvest Decor



32TK Kitchen Area



32TK Kitchen Area

Beautiful solid wood cabinetry graces the Cedar Creek kitchen with elegance. Crown molding complements the overhead cabinets in addition to toe kicks along the base cabinets. The convenient sized drawers are built with residential style roller guides to ensure hassle-free operation and travel locks to secure contents while enroute. Sculptured solid surface countertops add an upscale look without the weight.

This slide-out kitchen model creates a beautifully spacious work area with lots of counter space and storage areas including a handy appliance garage for all your kitchen gadgets.

Cedar Creek

B&B Elegance Package



Cedar Creek has taken our standard bedroom and bathroom to a new level of luxury, comfort, and convenience. The discriminate customer that has caviar dreams and champagne wishes, now has a choice of an upscale amenities package for the bedroom and bathroom...

"The B&B Elegance Package"

This package includes:

- Luxurious Upgraded Fabric Bedspread & Pillow Package
- Radius One Piece Fiberglass Shower with 4 Panel Radius Door (N/A Garden Tub)
- Upgraded Bathroom Mirror & Lighting Package



36RLTS Main Slide Room Shown with Desert Diamonds Decor



36RLTS



PERFORMANCE
Plus
GELCOAT
EXTERIORS

*36RLTS Shown with Optional
CreekSide Paint Scheme*



Inside and out, Cedar Creek abounds in amenities that penetrate every level. From the exterior custom artwork graphics down to the smallest detail inside, convenience, beauty, and comfort accompany you wherever you go.

CEDAR CREEK



36RLTS



Clean ups are quick and easy with the Dirt Devil® central vacuum system.



La-Z-Boy® Fabric Recliner is Standard



Dinette Chair with Convenient Storage

CEDAR CREEK



SPECIFICATIONS & FLOOR PLANS

CEDAR CREEK SPECIFICATIONS	32TK	34RLSA	34SATS	36RLTS	36RD5S	362BSA	37CKQS	37RDQS
Exterior Length	35'9"	36'8"	37'6"	38'	29'6"	39'2"	39'	38'
Exterior Height w/Air Conditioner	12'11"	12'11"	12'11"	12'11"	12'11"	12'11"	12'11"	12'11"
Exterior Width	96"	96"	96"	96"	96"	96"	96"	96"
Front Bedroom Interior Height	80"	80"	80"	80"	80"	80"	80"	80"
Hitch Weight	1990	2085	1760	1870	1763	1880	2210	2050
Axle Dry Weight	8596	9484	9551	9610	10563	9622	10600	10210
Unloaded Vehicle Weight	10586	11569	11311	11480	12416	11502	12810	12260
GVWR	13990	14085	13760	13870	15500	13382	15500	15500
Gross Cargo Capacity	3404	2516	2449	2390	3084	2378	2690	3240
Dual Axles (2)	#6000 Straight	#6000 Straight	6000# Straight	6000# Straight	7000# Straight	6000# Straight	7000# Straight	7000# Straight
Wheel Size	16 x 6	16 x 6	16 x 6	16 x 6	16 x 8	16 x 6	16 x 8	16 x 8
Tire Size	X	X	X	X	■	X	■	■
Optional Awning Size	16'	16'	18'	21'	18'	21'	18'	21'
Furnace Size	35 BTU	35 BTU	35 BTU	35 BTU	42 BTU	35 BTU	42 BTU	42 BTU
Demand Fresh Water Capacity	64	63	64	64	64	64	64	64
Black and Gray Water Capacity	40/40/40	40/40/40	40/40/40	40/40/40	40/40/40	40/40/40	40/40/40	40/40/40
Sleeping Capacity	6	6	6	6	6	6	6	6

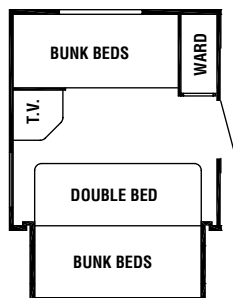
All weights listed are base weights. Weight capacities +/- 5%.
NOTE: All fifth wheel lengths include extended pin box and 4" bumper. *Model number of any particular unit does not necessarily reflect the overall length of the unit itself.

X LT235/85R16E

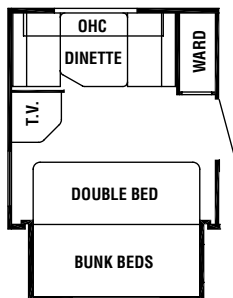
■ LT235/85R16G



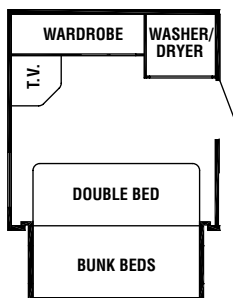
REAR BEDROOM OPTIONS FOR 362BSA



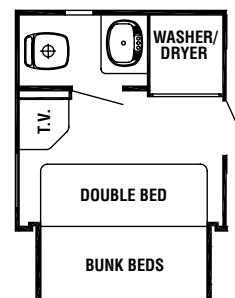
Option A1



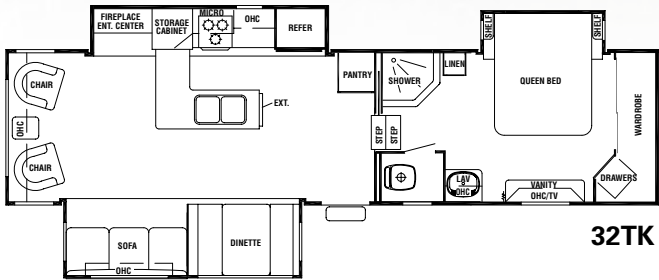
Option B1



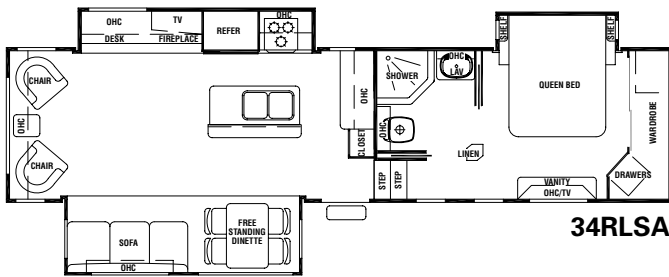
Option K



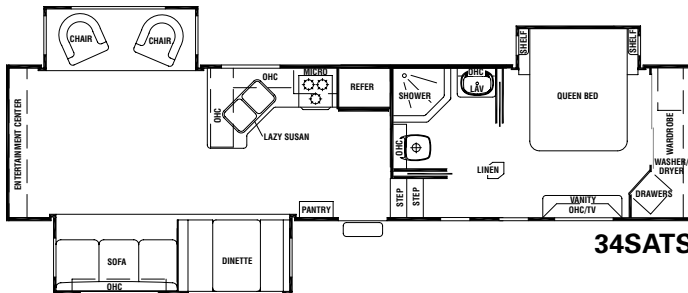
Option L



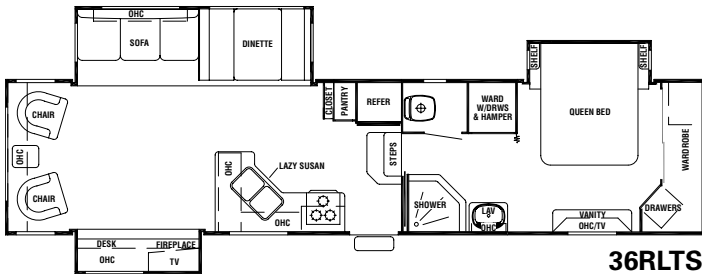
32TK



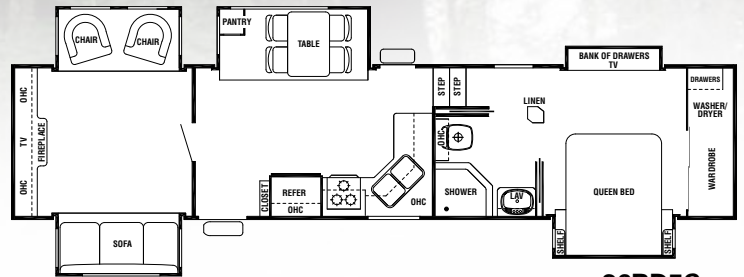
34RLSA



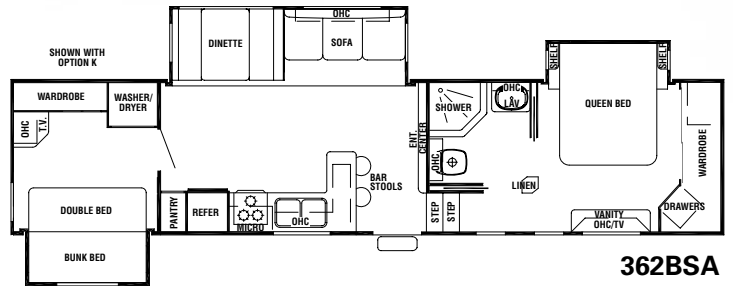
34SATS



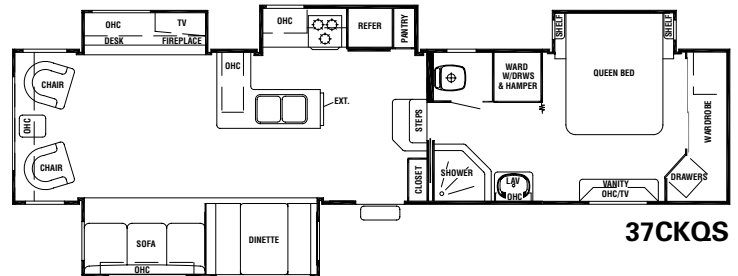
36RLTS



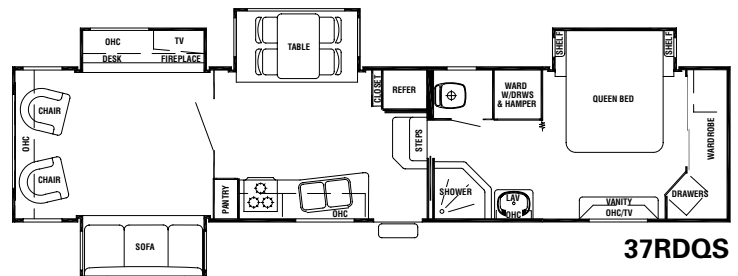
36RD5S



362BSA



37CKQS



37RDQS



2008 CEDAR CREEK STANDARD FEATURES

Cedar Creek Explorer Package will include: (1) 32" LCD Flat Panel, HD Television, Full Dolby® Digital, Dolby® Prologic, Surround Sound Stereo - DVD/CD/Tuner, Central Docking Station (N/A 32TK), 30" Residential Microwave, "Soft Top" Vinyl Storm Doors, Hide-A-Bed w/Air Mattress, True Owens Corning™ Gelcoat Exterior, Black Tank Flush, 16" Tires, Shock Absorbers, Rear Cap, 10 Gallon DSI Water Heater, 15,000 BTU Air Conditioner, Large Surface 12V Heating Pads on all Tanks, Fantastic Fan™ w/Rain Sensor in the Kitchen, 9100 Electric Awning, Rear Electric Jacks, Tinted Safety Glass, Entire Water Filtration System, Cedar Creek Switch Control Center, Winegard® HD Ready Pre-Wire.

Exterior Features

- #30 Gas Bottles with Bottle Cover & Automatic Change Over
- (2) Scare Lights - Door Side & Off Door Side w/Separate Wall Switches
- 110V. Outlet in Below Deck Front Storage Area
- 12V. Battery Disconnect
- Large Surface 12V. Heating Pads on All Holding & Fresh Water Tanks w/ Thermostat
- 15,500 LB Rated Extended Pin Box
- 16" Tire Underbelly Carrier
- 12V, Storage Lights in Below Bath Deck & Front Storage Areas
- 30" High Gelcoat Compartment Doors for Side-to-Side Storage, Turning Your Front Storage Area into a Front Storage Shed
- 30" Radius Front Door Entry w/ Deadbolt Lock & Drip Cap w/"Soft Top" Entry Storm Doors that Allow Full View to the Outdoors
- 55 AMP Power Converter
- All Exterior Compartment Doors, Exterior Lights & Corners are Sealed w/Butyl Rubber & Silicone - Proven to be the Best Sealant in the Industry - No Putty or Foam Tap
- Black Tank Flush
- Break Away Switch
- Cambered 10" I-Beam w/Unique "Z" Frame Storage
- Convenient Single Access Phone Jack & Cable TV Connections
- Detachable 30 AMP Power Cord
- Enclosed & Double Layer Insulated Underbelly (R14 + 5)
- Flush Floor Bath & Bedroom Deck
- Folding White Enamel Assist Handle at Entry Door
- Front Power Electric Jacks w/Quick Release Front Facing Jack Pins
- Hard Heat Duct Boot Leading into Your Front Upper Deck for 2X More Efficient Delivery of Heat
- Hitch Light
- Hydraulic Front Landing Jacks on 36RD5S, 37CKQS & 37RDQS
- Large Framed Dark Tinted Jalousie Clamp Ring Windows w/ Superior UV and Weather Protection
- Lighted Entry Step
- True Gelcoat Lockable Clamp Ring Exterior Baggage Doors w/Thumb Grip & Door Catch
- Opaque Jalousie Window in all Toilet Areas

- Custom Artwork Graphics
- Porch Light
- Radius Wrapped Bottom Metal Skirt
- Silver Metallic Clear Coat Wheels (No Rusting White Rims)
- Smooth, Easy Operating, Easy Grip, Entry Steps - Extra Wide for Confident Footing
- Taillight Assembly w/Back-Up Lights Included
- UV Automotive Paint Coating is Placed on Refrigerator Vents to Prevent Premature Color Changes.
- White Enamel Rear Ladder

Interior Features

Bedroom

- New Oiled Bronze Hardware that is Continued throughout the Bedroom & Bathroom Areas.
- 9 - 8" Deep, Drawers in Main Bedroom Area
- Bedroom Roof Vent
- Central Television Cabinet Location
- Full 6'8" of Headroom
- Luxurious Bed Spread which Includes Elastic Mattress Grips, Pillows, & Shams w/Solid Wood Shelves
- Soft Gray Mirrored Closet Doors that Conceal One of the Deepest Closets in the Industry
- Swivel Mount TV Antenna w/Power Booster
- Upgraded Pillow Top Residential Mattress
- Solid Wood Dresser Top (No Formica)

Kitchen

- 9 Cu. Ft. Refrigerator w/Exterior Digital Temperature Gauge
- 30" Over the Range Microwave w/ Built-In Vent
- New Laminated Countertop w/a 2" Solid Oak Edge
- 60" X 48" Window in Dinette Area
- Congoleum® Diamondflor® Armorguard® Vinyl Floor Covering
- Crown Molding Complementing all Overhead Cabinets in Kitchen Area
- Durable, Residential Stainless Steel Sink w/Full Twin Deep Wells & Includes a High Rise Swivel Spout & Vegetable Sprayer & (1) Sink Cover
- Entire Water Filtration System which Includes Tank & City Water - Even Your Shower Water is Filtered
- Full 42" Easy Entry, Double Pedestal Dinette Table w/2" Solid Oak Edging
- Larger 64-Gallon Demand Water System
- Lazy Susan (Where Applicable)
- Pantry (Where Applicable)
- Residential Style Full Extension Roller Drawer Guides w/Travel Locks - No Binding
- Silverware Drawer
- Solid Ash Drawer Fronts w/Baltic Birch Sides & Ends Convenient 5" & 8" Sizes
- Toe Kicks at the Base of the Kitchen Cabinet
- Hoosier Cabinet (34RLSA) w/2" Extendable Countertop & Appliance Garage

Miscellaneous Appliances

- 30 AMP Detachable Power Cord
- LP Gas Detector
- Carbon Monoxide Detector
- Smoke Detector

- Single Residential Style Thermostat for Heating & Cooling
- Solid State 55 AMP Power Converter
- Suburban 30,000 (Minimum) BTU Furnace
- Wall Mount Monitor Panel
- Water Heater By-Pass System for Winterization

Living Room

- 35" x 9" "SKYVIEW" Side Window in Living Area
- Carbon Monoxide Detector
- Ceiling Fan w/Light
- Coordinating Wall Paper Border
- Create-A-Breeze Fantastic Fan™ w/ Thermostat & Rain Sensor in the Kitchen
- Day/Night Shades
- Fireplace (36RLTS, 37CKQS, 37RDQS, 32TK, 34RLSA, 34SATS)
- Fluted Hardwood Main Slide Fascia Supported by Oak Columns & Post Pad at Carpet
- Lambrequin Style Valance w/Curtains Throughout Except Bedroom
- LP Detector
- Main Slide-Room Height 6'7"
- Pre-Drilled & Counter Sunk Fastened Cabinetry w/Lumber-Core Cabinet Stiles
- Queen Ann Style End Table (W/A)
- Smoke Detector
- Solid Ash, Cathedral Style, Cabinets Doors w/Heavy Duty Hinges, & Residential Handles & Knobs for a Beautiful Crisp Clean Look
- Trackless Plush Pile Carpeting in All Living Room & Bedroom Areas
- TV Cable, Satellite, & Phone/Data Port Jack in Living Area
- Upgraded Lighting at Sofa & Decorative Overhead Dinette Light
- Wall Clock

Bathroom

- 12"/10 Blade Bathroom Breeze Power Bath Vent w/Convenient Wall Switch
- 3 Tier Bath Towel Rack
- Wood Grain Passage Doors w/ Residential Door Handles
- Large Bathroom Mirror Medicine Cabinet w/Overhead Make-Up Lights
- One Piece Molded, Residential Style, Fiberglass Shower w/Seat that Won't Deteriorate w/Age
- Skylight Over Tub
- Foot Flush Porcelain Toilet
- Wall Switched Ceiling Lights in Key Locations

Just a Few Additional Options

- 2nd Penguin Air Conditioner for Two Total
- 12 Cu. Ft. Side by Side Refrigerator (N/A 32TK, 34SATS & 34RLSA)
- 15 Cu. Ft. Electric Refrigerator w/ Inverter (N/A 34RLSA)
- 30" Convection Oven/Microwave w/3 Burner Cook Top
- 36" Corner Bath Tub w/Seat
- 50 AMP Service Only
- 50 AMP Service w/Washer /Dryer Prep
- 72" x 80" King Size Bed
- A & E Electric One Touch Electric Awning w/Remote & Wind Sensor
- Awning Center Rafter
- Brace & Wire for 2nd Air Conditioner
- Ceramic Alternative Floor Covering

- Create-A-Breeze Fantastic Fans w/ Thermostat & Rain Sensor in the Bedroom Area
- Custom Paint (Truck Color Matching Available)
- CreekSide Lower Body Custom Paint (Truck Color Matching Available)
- Free Standing Table w/Extension & Hidden Storage Chairs
- Exterior 12V. Stereo System
- Decorative 5 Pillow Package
- Deluxe Aluminum Wheels
- Dirt Devil® Central Vacuum System w/ Vac Dustpan
- Electric Dump Valves
- Jack-Knife Sofa Replacing Bottom Bed w/Hinged Upper Bunk
- Leather La-Z-Boy™ Rocker Recliners
- Lightweight Ultra-Leather Swivel Recliners w/Ottoman
- LP Generator Prep w/Carbon Monoxide Detector (Requires 50 AMP Service)
- Luxurious Sculpted Solid Surface Style Galley & Lavatory Countertops. (Includes Built-In Sink Covers, Pull Out Faucet/Sprayer & Continuous Color Sinks)
- Combination Washer/Dryer
- Stackable Washer & Dryer - Wired Individually to Allow Simultaneous Wash & Dry
- Mirrored Bath Door
- Onan 5.5 Marquis Gold LP Generator
- Outside Shower
- Selector Switches for Slide Rooms
- Slide Room Awning Toppers
- Sliding Privacy Doors to Bedroom (Only 36RLTS, 37CKQS, 37RDQS)
- Thermal Pane Windows
- Trail Air™ Air Ride Hitch Coupler
- Trail Air™ Center Point Air Ride Suspension
- Voyager Rear Observation System w/5.6 LCD Monitor, 12V. Accessory Plug, Receiver Transmitter, & Rear Color Camera
- Wineguard 12" Roadtrip SD Satellite Antenna (Stationary)
- Bed & Breakfast Elegance Package: (1) Luxurious Upgraded Fabric Bedspread & Pillow Package, (2) Radius One Piece Fiberglass Shower with 4-Panel Radius Door (N/A Garden Tub), (3) Upgraded Bathroom Mirror & Lighting Package.

CEDAR CREEK FEATURES

1 > Optional **DIRT DEVIL®** CV950 central vac cleaning system with VacPan™ automatic dustpan at entry door.

2 > **"SOFT TOP" VINYL STORM DOOR** (CCEP* & SBEP*)

3 > Optional **TRAILAIR® AIR RIDE PIN BOX** – Lose the jiggles, bumps, chucks and jars with the 5th Wheel Air Ride Pin Box. By adding an air bag at the hitch connection, you, your towing vehicle and the coach enjoy smooth, stable towing performance.

4 > **TRAILAIR® EQUA-FLEX™ FLEXIBLE EQUALIZER** – This product is designed to replace the standard cast iron equalizer between the leaf spring suspension.

This Equalizer provides a reduction in road shock by 53–60% according to Roush Industries, Inc. (testing completed 4/24/06). Trailair® can't improve the road, but they can improve the ride.

5 > The Cedar Creek **SWITCH CONTROL CENTER** provides a convenient and attractive place to mount the controls and switches that control your RV (CCEP* & SBEP*).

6 > **PORCELAIN COMMODOE** with foot flush is standard.

7 > Hand laid **CERAMIC ALTERNATIVE FLOORING** delivers a high end residential look and feel in the kitchen and bathroom areas (optional).

8 > "Quick Draw" rear electric **LEVELING JACKS** add to the stability of your home away from home (CCEP* & SBEP*).

9 > Luxurious **SCULPTED SOLID SURFACE STYLE GALLEY AND LAVATORY COUNTERTOPS**. Built-in sink covers are also included to allow for a continuous counter surface (optional).

10 > Your outside shower, black tank flush and water tank fills are located in a central **DOCKING STATION** with lock and thumb grip (CCEP*, N/A 32TK or SBEP*).

11 > The 10,000 gallon, 1 micron, **COMPLETE WATER FILTRATION SYSTEM** filters all city and tank fresh water in the unit (CCEP* & SBEP*).

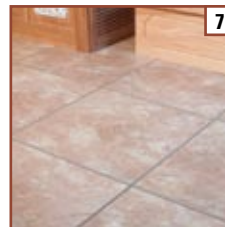
12 > Optional **TRIPLE TIER STORAGE TOWER** with sliding trays.

13 > **9100 SERIES A+E ELECTRIC AWNING** (CCEP* & SBEP*)

14 > **WINEGARD™ HD READY PRE-WIRE** allows customers to conveniently add satellite systems with the proper wiring to split the signal between the living room and bedroom areas (CCEP* & SBEP*).

*CCEP: Cedar Creek Explorer Package

*SBEP: Silverback Explorer Package



Emergency Roadside Assistance Service Administered by Coach-Net®. Ask your dealer for more information.

CUSTOM PAINT DESIGN

New



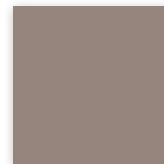
SHOWN IN CHAMPAGNE AQ

PERFORMANCE
Plus
GELCOAT
EXTERIORS

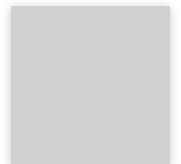
Choose one of the pre-selected paint colors available (Burgundy, Champagne AQ, or Silver Birch) or give Cedar Creek the paint code from your vehicle and we can paint the unit to match for no extra charge.



BURGUNDY



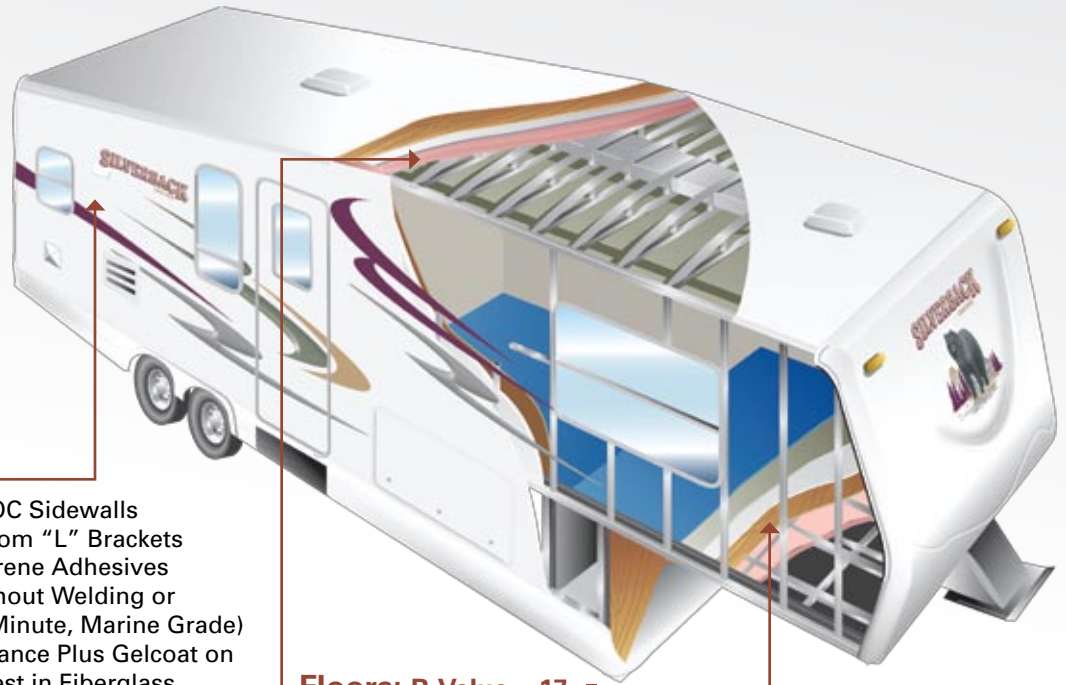
CHAMPAGNE AQ



SILVER BIRCH

2008 CEDAR CREEK AND SILVERBACK ALUMINUM CAGE CONSTRUCTION

State-of-the-art construction techniques along with top grade building components give Cedar Creek its reputation for long-lasting quality.



Side Walls: R-Value = 9

- Handmade 2 x 2 - 16" (or less) OC Sidewalls with Individually Fastened Custom "L" Brackets Combined with Uniroyal® Silaprene Adhesives for a Strong Flexible Frame without Welding or Lamination. (475 PSI at 2" Per Minute, Marine Grade)
- True Owens Corning™ Performance Plus Gelcoat on all Exteriors - The Best of the Best in Fiberglass
- All Baggage Doors and Entry Doors are Made out of True Owens Corning™ Performance Plus Gelcoat to Prevent Uneven Aging of Your Unit
- Automotive UV Clear Coat Paint, Guaranteed for 7 Years, on all Refrigerator Vents, Microwave Vents, and Entry Door Window Frames, Preventing Early Discoloration
- Sidewalls are Bolted to the Floor with 5/16" x 6-1/2" Carriage Bolts at each Outrigger
- Glued R-7 Fiberglass Insulation Expanded to its Full Capacity within the Sidewall Frame
- Designed by Forest River, a New Unique Slide-Out Seal System for Tighter, Stronger Water Protection - First of its Class - Compare It!
- 5 Direction Insulation in all Slide-Out Rooms

Floors: R-Value = 17

- 3" Aluminum Frame Floor with In-Floor Heat Ducting and Custom "L" Brackets Combined with Uniroyal® Silaprene Adhesives
- 5/8" Tongue and Groove Plywood, Marine Grade
- Cambered 10" I Beam "Z" Frame with Large Support Outriggers and Full Length Welds
- The Tongue and Groove Plywood Floor is Attached to the Aluminum Frame with Silaprene and Screwed every 5"
- Darco Waterproof Underbelly
- Fully Enclosed 4' x 8' ABS Removable Panels for Easier Access into the Underbelly
- R-14 Fiberglass Insulation Only - Plywood, Vinyl, Carpet, Tank Heaters, Carpet Pad, etc. are not Included within These R Values

Roof: R-Value = 17

- 1/4" Foam Cor® Insulation Board Weather Barrier (R1 Value)
- Full Length 3/8" Wood Roof Decking for a Full Walk On Roof (Screwed - Not Stapled)
- R-14 (Fiberglass Insulation Only) - Roof Decking, Foam Cor®, and Rubber Membrane are not Included within This R-Value
- 2 x 2 - 16" OC - 4" Truss Roof Frame Combined with Uniroyal® Silaprene
- 2 Ply - Tuff Ply Rubber Roof Membrane with Built-In Fire Retardant
- Full Length Drip Rails with Spouts from the Front to the Rear
- Roof is Bolted to Sidewall with 5/16" x 3-1/2" Carriage Bolts
- New 3" Roof Radius



Cold room tested to zero degree farenheit with standard insulation and heating pads with no tank freezing!

DECOR CHOICES

Desert Sky



Rocky Road



Desert Diamonds



Modern Paisley



Maverick Marsh



Harbor Blue



Santa Rosa Harvest