

SILVERBACK

By CEDAR CREEK

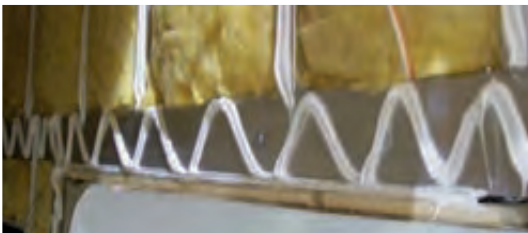




2" x 3" Aluminum floor studs



Aluminum studded sidewalls and roof trusses on 16" centers or less



Thick Silaprene (475 PSI) guarantees solid contact between the gelcoat and aluminum frame without lamination



Residential, glasswool insulation designed by nature



Radiant shield Thermo-foil – R-38

Roof - Calculated R-Value = R-38

- ◆ Roof - Calculated R Value = 38
- ◆ Radiant Shield Insulation, 97% Reflective / 3% #mission (Valued at R38)
- ◆ 2 Layers of Residential Home Eco-Batt Glasswool Insulation (Valued at R14)
- ◆ "Triple" Layer Insulation Supplements the Cohesive Retention Factors of Roof Decking and Rubber Membrane
- ◆ Attic Vents
- ◆ Full Length 3/8" Wood Roof Decking for a full Walk on Roof
- ◆ 2 X 2 - 16" OC 5" Aluminum Truss Roof Rafters
- ◆ 2 Ply - Tuff Ply Rubber Roof Membrane with Built in Fire Retardant and 12 year Warranty
- ◆ Full Length Drip Rails from the Front to the Rear of the Unit
- ◆ Roof is Bolted to Sidewall with 5/16" x 3-1/2" Carriage Bolts
- ◆ 5" Radius Roof



COLD ROOM TESTED



- ◆ Calculated R-value = R-38 in the roof & floor
- ◆ 12 Volt heating pads on all tanks
- ◆ 2 Layers of residential insulation
- ◆ 1 Layer of radiant shield Thermo-foil

What else would you desire in a fifth wheel?

Cedar Creek's Famous All Aluminum Super Structure

Floors & Underbelly - Calculated R-Value = R-38

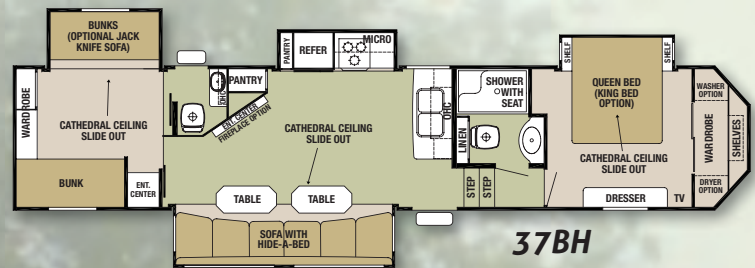
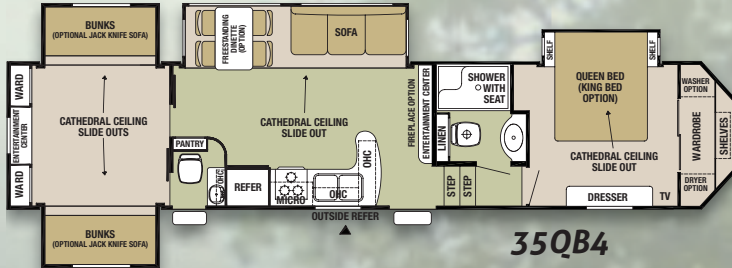
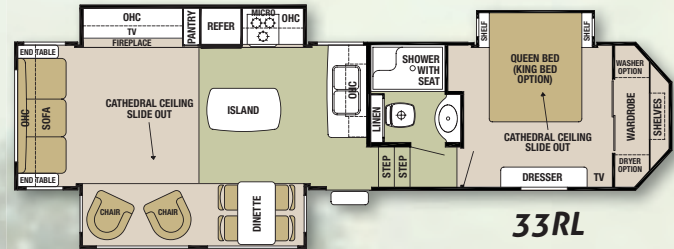
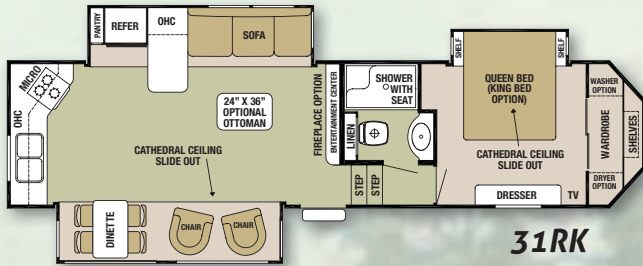
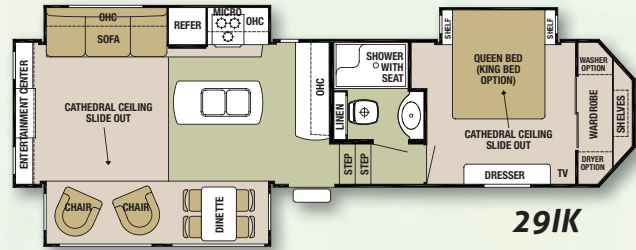
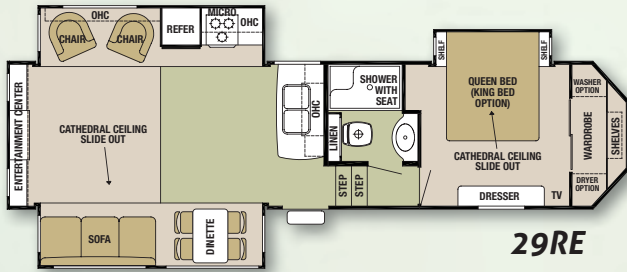
- ◆ Radiant Shield Insulation, 97% Reflective / 3% Emission (Valued at R38)
- ◆ 2 Layers of Residential Home Eco-Batt Glasswool Insulation (Valued at R14)
- ◆ 12 vt. Heating Pads on ALL Tanks
- ◆ "Triple" Layer Insulation Enhances the Protective Values of Plywood, Vinyl Carpet, Carpet Pads, Tank Heaters Etc.
- ◆ Handmade 3" Aluminum Frame Floor w/In-Floor Heat Ducting and Custom "L" Brackets combined with Silaprene Adhesives
- ◆ 5/8" Tongue & Groove Plywood – Glued and Screwed
- ◆ Cambered 10" I Beam with Large Support Outriggers & Full Length Welds
- ◆ Darco Waterproof Underbelly
- ◆ Fully Enclosed 4' x 8' ABS Removable Panels for Easy Access to the Tanks

2" Thick Side Walls - Calculated R-Value = R-9

- ◆ Cedar Creek's Famous All Aluminum Super-Structure. Handmade 2"x 2" / 16" (or less) on Center Sidewalls and Individually Fastened Custom "L" Brackets Combined with Uniroyal® Silaprene Adhesives for a Strong Flexible Frame without Welding or Lamination. (475 PSI at 2" Per Minute, Marine Grade) - Because we depend on the Frame for Our Strength!!
- ◆ "True" Classic Performance Plus Gelcoat on all Exteriors – The Best of the Best in Fiberglass. Don't Accept "Hi-Gloss Fiberglass" or "Gel-Coated" Sidewalls - Only True Performance Plus Gelcoat stands the Test of Time.
- ◆ All 1-1/2" Thick Baggage Doors and Entry Doors are made out of "True" Classic Performance Gelcoat to Prevent Uneven Aging of Your Unit!!
- ◆ Sidewalls are Bolted to the Floor with 5/16" x 6-1/2" Carriage Bolts at each Outrigger
- ◆ Glued R-7 Fiberglass Insulation Expanded to Full Capacity within the sidewall frame
- ◆ Designed by Forest River, a Unique Slide-Out Seal System for tighter, stronger Water Protection - First of its Class - Compare It!
- ◆ 5 Direction Insulation in all Slide-Out Rooms



Floorplans



Specifications

Model	29RE	29IK	31RK	33RL	35QB4	37BH
Exterior Length	33'11"	33'11"	35'4"	36'5"	39'11"	39'11"
Exterior Height w/Air Conditioner	12'11"	12'11"	12'11"	12'11"	12'11"	12'11"
Exterior Width	96"	96"	96"	96"	96"	96"
Front Bedroom Interior Height	6'6"	6'6"	6'6"	6'6"	6'6"	6'6"
Hitch Weight	1615	2070	2005	2015	1947	1940
Axle Dry Weight	8175	8759	8609	8400	10229	10769
Unloaded Vehicle Weight	9790	10829	10614	10415	12176	12709
GVWR	13615	14040	14005	14015	15500	15500
Gross Cargo Capacity	6825	3241	3391	3600	3324	2791
Dual Axles (2 Straight)	6000#	6000#	6000#	6000#	7000#	7000#
Tire Size	ST235/80R/16E	ST235/80R/16E	ST235/80R/16E	ST235/80R/16E	LT235/85R/16G	LT235/85R/16G
Awning Size	16'	21'	16'	18'	21'	18'
Furnace Size	35,000 BTU	35,000 BTU	35,000 BTU	35,000 BTU	40,000 BTU	40,000 BTU
Demand Fresh Water Capacity	64	64	64	64	64	64
Grey Water/Black Water Tanks	80/40	80/40	80/40	80/40	80/80	80/80
Sleeping Capacity	6	6	6	6	8 – 10	8 – 10

All Weights listed above are base weights. Weight capacities +/- 5%.
 NOTE: All fifth wheel lengths include extended pin box and 4" bumper.
 Model number of any particular unit does not necessarily reflect the overall length of the unit itself.

Silverback's front storage compartment is insulated with 1-1/4" thick baggage doors. The central docking station includes the water bypass, outside shower, easy access dump valves, slide-room valves and water systems. Forest River's exclusive water filtration system filters drinking water AND the entire water system of the coach. The spare tire is also stored up front for convenience.



Explorer Package:

- ◆ LED, Flat Panel, HD Ready Television in Living Room and Bedroom
- ◆ 12 Vt. CD/DVD, AM/FM Stereo
- ◆ 2 Exterior Waterproof Patio Speakers
- ◆ 8 Cu. Ft., Wood Front Refrigerator
- ◆ Hide-a-Bed Sofa
- ◆ 30" Over the Range Microwave with Vent
- ◆ LG Hi-MACS Classic Solid Surface Countertops
- ◆ True Nobel Classic "Pearl" Gel Coat Exterior
- ◆ Black Tank Flush
- ◆ Bathroom Breeze Power Fan
- ◆ Rear Stabilizer Jacks
- ◆ Front Hydraulic Jacks
- ◆ Entire Water Filtration System
- ◆ Cedar Creek Switch Control Center
- ◆ Winegard HD Roof Satellite Prep



Many of our competitors use false foam in their fascia. Silverback's solid wood fascia gives "A" quality difference you can hear and feel!



Removable "Soft Top" Vinyl Storm Doors allow light and visibility without losing cooling or heating.

Standard Features

- ◆ LED Lighting with Lifetime Warranty
- ◆ 10 Gallon Water Heater
- ◆ 12 Volt Heating Pads on all Holding Tanks
- ◆ Roof & Underbelly - R38
- ◆ Sidewalls - R9
- ◆ 30" X 48" Rectangular Shower with Glass Doors
- ◆ Ducted 15,000 BTU Air Conditioner
- ◆ Attic Vents
- ◆ Brace & Wire for 2nd Air
- ◆ Digital Thermostat for Heat and Air Conditioner
- ◆ Braced for Optional "Level-Up" 6-Point Hydraulic Level System
- ◆ Bathroom Breeze Fantastic Fan
- ◆ Create-A-Breeze Fantastic Fan with Rain Sensor in Kitchen
- ◆ Cathedral Slide Rooms
- ◆ Congoleum® Diamondflor™
- ◆ Docking Station with Ezy Access By-Pass Valves for the Water Heater Systems
- ◆ Enclosed and Insulated Underbelly with Heating Pads on All Tanks
- ◆ Dexter E-Z Flex Rubber Equalization System with Greased Zerks and Bronze Bushings
- ◆ Dexter Nev-R-Adjust Brakes
- ◆ Dexter Ezy Lube Hubs
- ◆ 16" Tires and Aluminum Rims
- ◆ Front Storage for Spare Tire
- ◆ LED Tail Lights and Lower Front Lights
- ◆ Lighted Entry Step
- ◆ 55 Amp Converter with Charger
- ◆ 50 AMP Power Cord
- ◆ Radius Ceiling
- ◆ New Interior - Hickory Glazed Maple Hardwood
- ◆ Solid Wood Fascia - No Wrapped Foam - Try the "Tap Test"
- ◆ Serta® Residential Dreamscape Mattress
- ◆ Porcelain Toilet with Top Swirl Flush
- ◆ Shaw® Carpeting
- ◆ "Soft Top" Vinyl Storm Doors

Options

- ◆ "Level-Up" 6-point Hydraulic Level System
- ◆ 50 AMP Cord Reel
- ◆ Dinette Table Replacing Freestanding Table and Chairs
- ◆ Fireplace
- ◆ Fabric or Gunslinger Hide-A-Bed with Air Mattress (35QB4 and 37BH Only)
- ◆ Jack-Knife Sofa Replacing Bottom Bunk (35QB4 and 37BH)
- ◆ Central Vacuum System
- ◆ Cocoa La-Z-Boy® Hide-A-Bed Lux Sofa and Recliners (N/A 35QB4 and 37BH)
- ◆ Beige La-Z-Boy® Hide-A-Bed Lux Sofa and Recliners (N/A 35QB4 and 37BH)
- ◆ Fabric La-Z-Boy® Hide-a-Bed Lux Sofa and Recliners (N/A on 35QB4 and 37BH)
- ◆ Outside Kitchen which Includes Sink with Faucet, Large Surface Counter, Cabinets and Portable Grill
- ◆ Deluxe La-Z-Boy® Ottoman with Hidden Storage
- ◆ Ducted Penguin 13,500 BTU Second Air Conditioner
- ◆ Rear Electric Jacks
- ◆ Serta® Dreamscape King Bed
- ◆ Serta® Trump Home Luxury Queen and King Mattress
- ◆ Splendide Front Loading Washer/Dryer
- ◆ Hehr Frameless Thermo-pane Windows (Tinted)
- ◆ Washer/Dryer Prep
- ◆ Wall Hugger Theater Seating
- ◆ 39" LED Flat Panel, HD Ready TV in Living Room
- ◆ Hehr Frameless Tinted, Safety Glass Windows
- ◆ 1-1/4" Bike Rack Hitch Receiver
- ◆ Rebond Carpet Pad
- ◆ 12" Super Sofa with Hide-A-Bed, 2 sliding tables w/mounts and 2 extra mounts in bunkroom (35QB4 and 37BH)



Nantucket



Rattan



Spice



Walnut Blossom

Decor



PRE-DELIVERY INSPECTION FACILITY

20,000 square feet of quality assurance. The bare essentials for a premium product. This state-of-the-art facility gives immediate daily feedback to production for quality assurance in every unit built.



Forest River, Inc. encourages our customers to purchase their Forest River products from a local dealership whenever possible for the following reasons:

- 1) Forest River, Inc. dealers are independently owned and operated businesses so priority service and scheduling is at their discretion and is often provided to customers that purchased their unit at that dealership.
- 2) Purchasing locally allows customers to establish meaningful relationships with a dealer, enhancing the RV experience through assistance with product questions, user tips or RV regulations for your state or country, and much more!
- 3) Canadian customers must meet requirements to bring an RV purchased out of the country to their home. These requirements may involve additional inspections and certifications, taxes and fees. Your local Canadian Dealer is a professional at meeting these requirements.
- 4) Scheduling timely warranty repairs and adjustments through a local dealership provides far greater flexibility and convenience to you, the customer!

It is the goal of Forest River, Inc. that all of our RV owners fully enjoy the RV experience and that customer satisfaction meets or exceeds their expectations!

The Silverback Experience

Cedar Creek is dedicated to enhancing the joy of the outdoors and your peace of mind, by building better quality recreational vehicles designed to withstand rugged road conditions and extreme temperatures. Experience Silverback – see where the road leads and enjoy what life has to offer!



SILVERBACK

By CEDAR CREEK

The Smart Choice for the Experienced RV'er

FOREST RIVER INC./CEDAR CREEK DIVISION

501 Hawpatch Road / Topeka, IN 46571

Ph: 260-593-2404 / Fax: 260-593-2447

Parts & Service / Ph: 260-593-3017 / Fax: 260-593-2645

All illustrations and specifications contained in this literature are based on the latest product information at the time of publication. Forest River, Inc. reserves the right to make changes in prices, colors, materials, equipment and specifications at anytime, without notice, and assumes no responsibility for any error in this literature. All units are shipped F.O.B. point of manufacture. ©2013 Cedar Creek.

A division of Forest River, Inc., a Berkshire Hathaway Company. 8/13 Silverback

YOUR SILVERBACK DEALER

24/7 EMERGENCY ROADSIDE ASSISTANCE

For a worry-free ownership experience

Forest River includes one

year of Coach-Net RV Technical & Roadside

Assistance with each RV purchase. Whether new to the RV lifestyle or an experienced RV enthusiast,

Forest River owners have 24/7 access to technical, operational and emergency road service coverage throughout the US & Canada.

Coach-Net's fast, dependable service is just a phone call away.

Coach-Net®
RV Technical & Roadside Assistance



Learn More

Scan this barcode using a QR Reader on your smart phone to learn more about Forest River.



A Berkshire Hathaway company.

On The Web at: www.forestriverinc.com/cedarcreek