

MOUNTAIN AIRE KOUNTRY AIRE

1997 5th Wheels



1997 Mountain Aire® 5th Wheel



1997 Kountry Aire® 5th Wheel

MOUNTAIN AIRE KOUNTRY AIRE



1997 Mountain Aire® 5th Wheel



1997 Kountry Aire® 5th Wheel

Compliments of:



An American Tradition of Excellence.



Uncompromising work standards are only a part of what Newmar's world-class quality is all about. Professionals working to produce distinctive, dependable and durable products that will serve you for many years. Our aim is to maintain the highest standards in quality and customers service.

We invite you to visit our new, built in 1995, state-of-art production facility in Nappanee, Indiana. Tours are offered weekdays at 10:00 A.M. and 1:00 P.M. E.S.T.

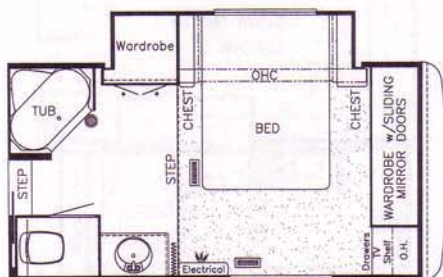

Mahlon Miller
Chairman of the Board



Don't forget to check out the Klub—the Newmar Kountry Klub, that is. All you need to be eligible is to be a proud owner of any one of the fine Newmar recreational vehicles.

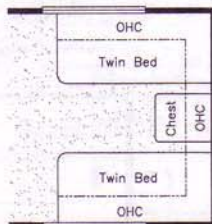
Mountain Aire® • Kountry Aire® 5th Wheel

1997 • Optional Custom Floorplans



Option 7M620

Cabover With large slideout
Available in Models:
36 RKWB 36 SKDS



Option 7K080

Twin bed
Available in all Models



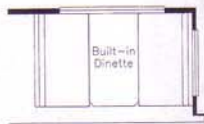
Option 7K860

Desk and overhead cabinet in slideout
Available in Models:
36 RKWB 39 RKWB
40 RKWB



Option 7K270

Rear built-in dinette
Available in Models:
33 WRKD 34 RKSA
36 RKSA 36 RKWB
39 RKLC 39 RKWB
40 CKDA 40 CKDB



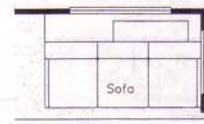
Option 7K270

Front built-in dinette
Available in Models:
34 RLDK 34 RLWB
36 RLSA 36 SKDS
39 RLDK 39 RLSE
40 RLKF



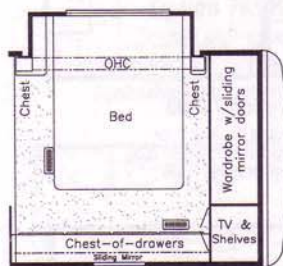
Option 7K480

Rear sofa storage
Available in Models:
34 RLDK 34 RLWB
36 RLSA 36 SKDS
39 RLDK 39 RLSE



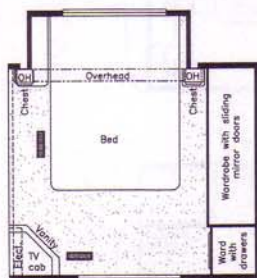
Option 7K480

Front sofa storage
Available in Models:
33 WRKD 34 RKSA
36 RKSA 36 RKWB
39 RKWB 40 CKDA
40 CKDB



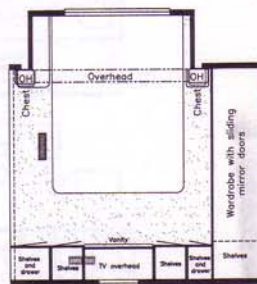
Option 7M650

Cabover slideout with dresser



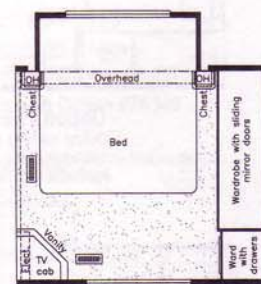
Option 7M380

Honeymoon slideout



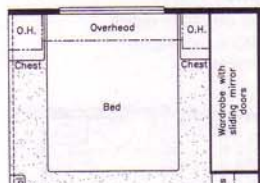
Option 7M660

Cabover slideout with vanity center



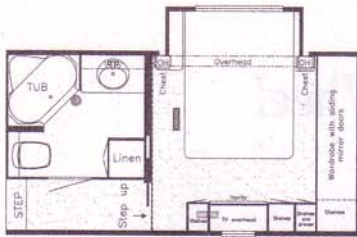
Option 7K760

Cabover s/o and king size bed

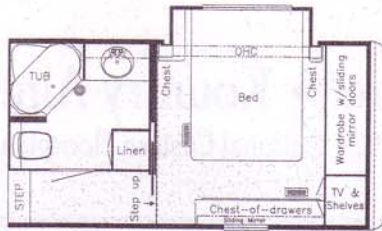


Options Available in Models:

33 WRKD 34 RLDK
34 RLWB



Option 7M670
Side aisle wardrobe delete with
cabover slideout and vanity center



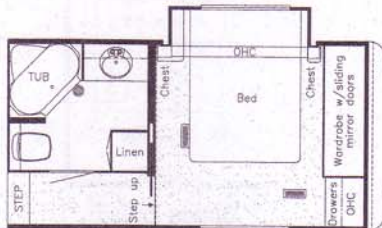
Option 7M680
Side aisle wardrobe delete with cabover
slideout and dresser



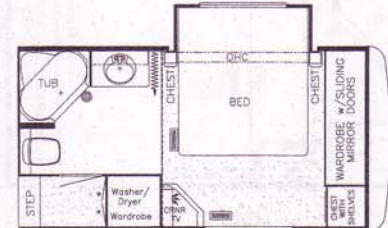
Option 7M610
Cabover s/o



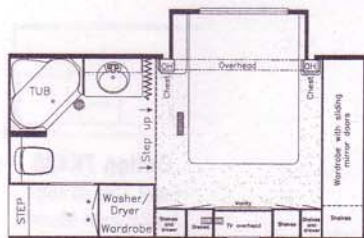
Option 7K990
Double sliding doors when used
with twin beds
Applicable with option 7K080



Option 7M690
Side aisle wardrobe delete cabover s/o



Option 7K990
Double sliding door
(when used with cabover slideout and dresser)
Applicable with 7M430



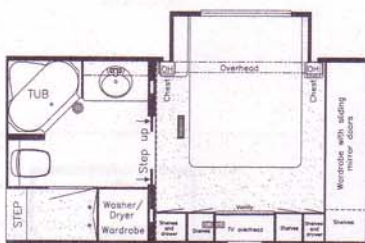
Option 7M390
Sideout in cabover with vanity center

**Options Available in
Models:**

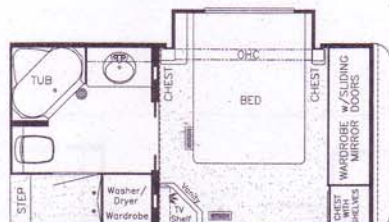
- 34 RKSA
- 36 RLSA
- 36 RKSA
- 36 SADS
- 39 RKLC
- 40 RLFK



Option 7K760
Cabover s/o with king bed
(when used with side aisle wardrobe delete)
Applicable with 7K040



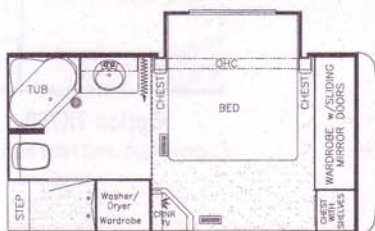
Option 7K990
Double sliding door
(when used with cabover slideout and vanity center)
Applicable with 7M390



Option 7K990
Double sliding door
(when used with cabover slideout)
Applicable with 7M610



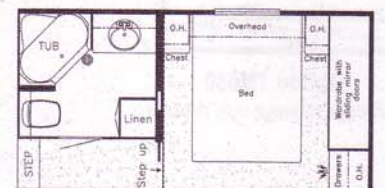
Option 7K990
Double sliding door
(when used with honeymoon suite)
Applicable with 7K340



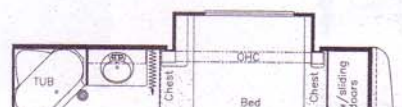
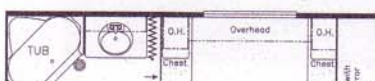
Option 7K760
Cabover slideout with king bed



Option 7K990
Double sliding door

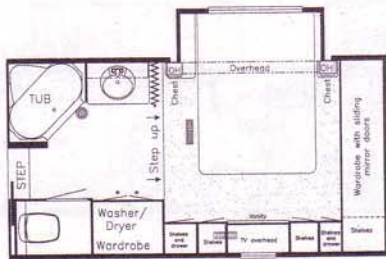


Option 7K590
Side aisle wardrobe delete
with Honeymoon suite

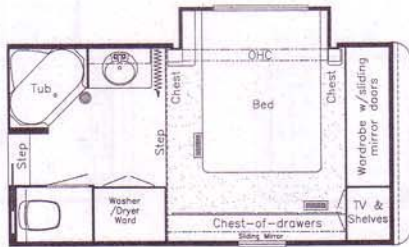


Mountain Aire® • Kountry Aire® 5th Wheel

1997 • Optional Custom Floorplans



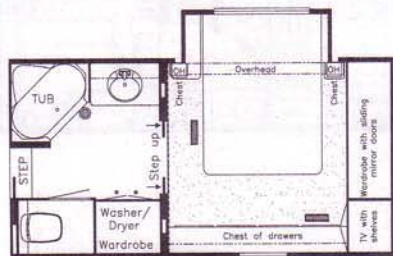
Option 7M390
Cabover Slideout with
vanity center



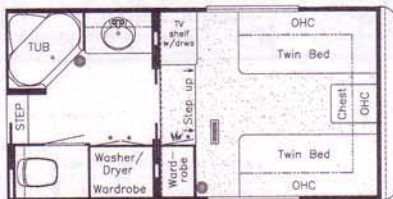
Option 7M430
Cabover s/o with dresser



Option 7M610
Cabover s/o



Option 7K990
Double sliding doors
(when used with Cabover slideout and dresser)
Applicable with Option #7M430



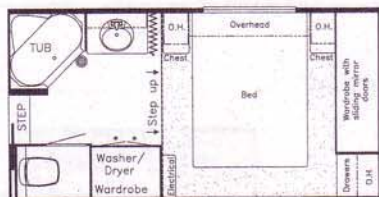
Option 7K990
Double sliding door
(when used with Twin bed option)
Applicable with Option #7K080



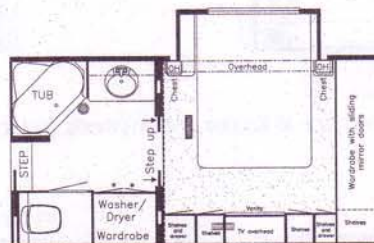
Option 7K990
Double sliding doors
(when used with Cabover slideout)
Applicable with Option #7M610



Option 7K990
Double sliding door
(when used with Honeymoon suite)
Applicable with Option #7K340



Option 7K340
Honeymoon suite

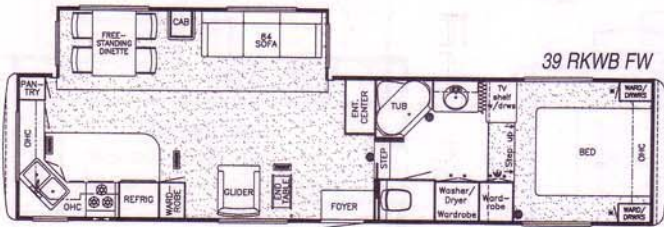


Option 7K990
Double sliding doors
(when used with Cabover slideout vanity center)
Applicable with Option #7M390

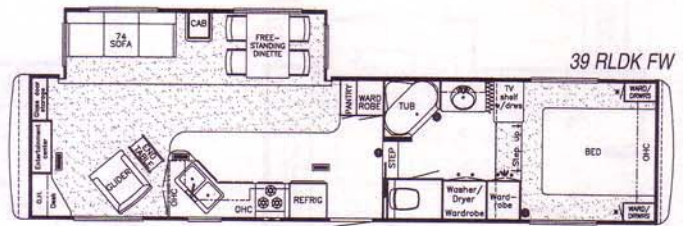


Option 7K990
Double sliding door

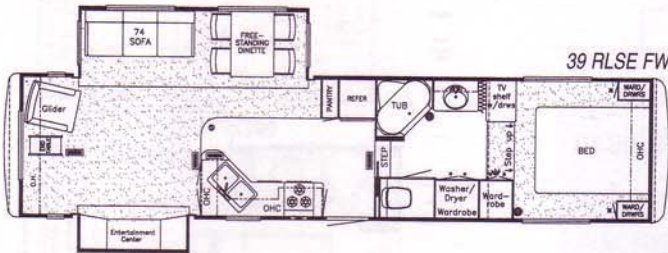
Prices, specifications and floor plans are subject to change at Newmar's discretion without prior written notice or obligation. Some floor plans may show optional chairs or end tables.



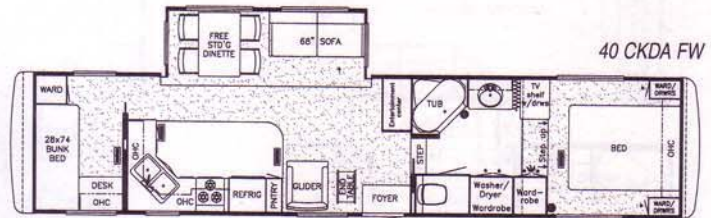
39 RKWB FW



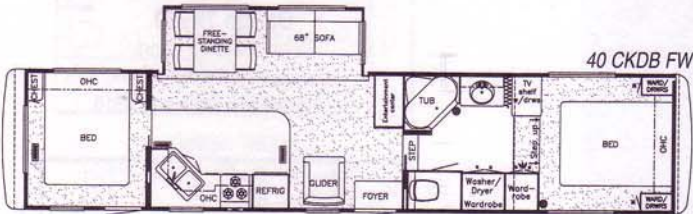
39 RLDK FW



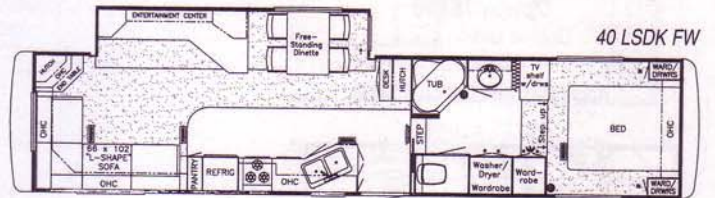
39 RLSE FW



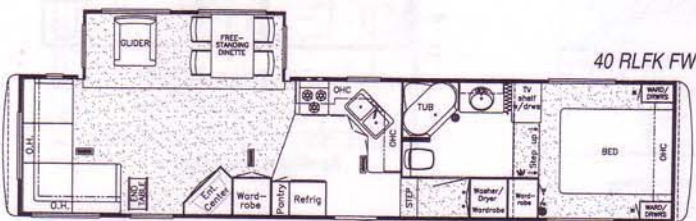
40 CKDA FW



40 CKDB FW



40 LSDK FW



40 RLKF FW

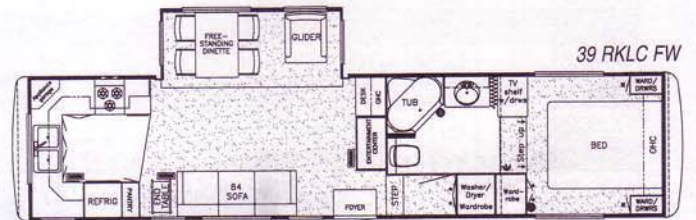
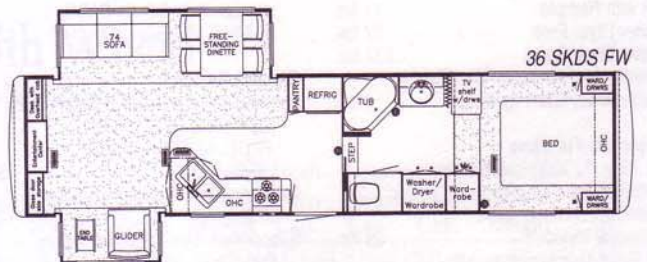
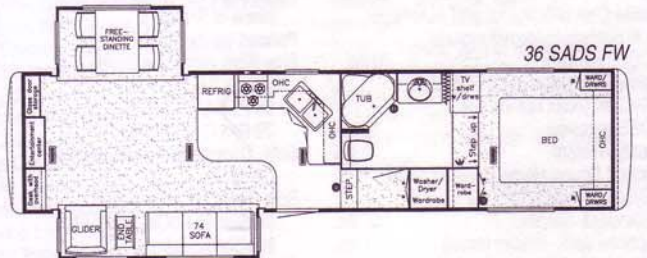
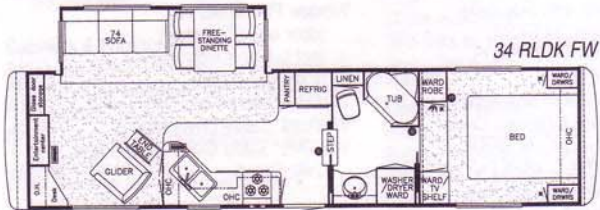
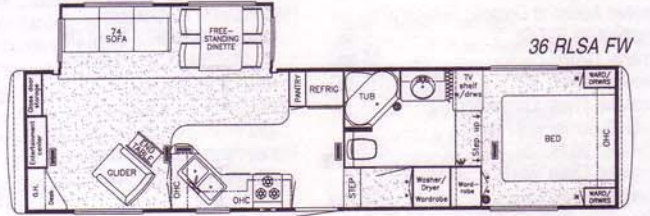
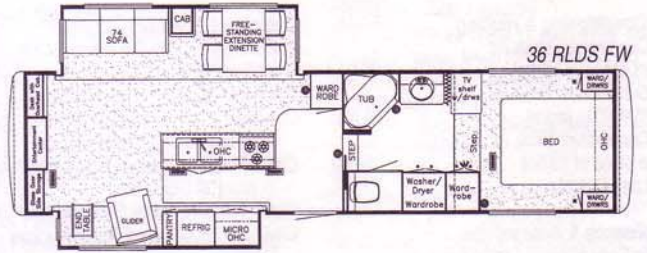
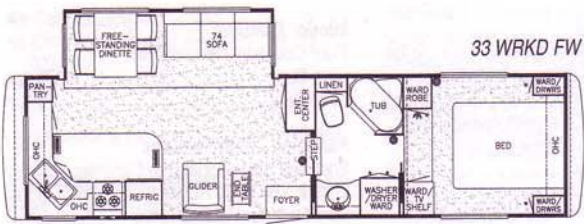
Prices, specifications and floor plans are subject to change at Newmar's discretion without prior written notice or obligation. Some floor plans may show optional chairs or end tables. See your Dealer for availability.

* Carpet in bathroom is standard in all Kountry Aire 5th wheels. (not shown in above floorplans)



Mountain Aire® • Kountry Aire® 5th Wheel

1997 • Floorplans



Kountry Aire® 5th Wheel

1997 • Optional Features

Approx Weight			
Air Conditioning & Heating		Cabinets & Furniture (continued)	
Air Conditioner Brisk Air 13.5M BTU (extra)	95 lbs.	Built-in Dinette with Drawers in place of Free Standing Table/Chairs	23 lbs.
Air Conditioner Brisk Air 15M BTU (extra)	100 lbs.	Cabinetry Bleached Oak Hardwood	0 lbs.
Air Conditioner Brisk Air 15M BTU in place of 13.5M	5 lbs.	Cabinetry Cherry Hardwood with Raised Panel Cathedral Doors	0 lbs.
LP Leak Detector	1 lbs.	Chair Flexsteel Leather/Vinyl Glider/Recliner in place of Standard	10 lbs.
Appliances & Accessories		Chair Flexsteel Petite Glider/Recliner	45 lbs.
Basic Sony Satellite Digital Receiver (does not include programming)	37 lbs.	Chair Flexsteel Swivel Glider/Recliner (extra)	60 lbs.
Food Center Blender in Kitchen Countertop	3 lbs.	Desk with Phone Jack & 110 Volt Recept in Slideout (36 RKWB, 39 RKWB, 40 RKWB)	25 lbs.
Icemaker Added to Dometic Refrigerator (except 36 RLDS)	5 lbs.	French Doors in Bedroom (except 33 WRKD, 34 RLDK, 34 RLWB) (not available with options 7K040 or 7M620)	83 lbs.
Icemaker U Line	57 lbs.	Honeymoon Suite Bedroom (33 WRKD, 34 RLDK, 34 RLWB)	120 lbs.
Microwave Oven 22"	31 lbs.	Honeymoon Suite Bedroom (except 33 WRKD, 34 RLDK, 34 RLWB)	120 lbs.
Microwave Oven Convection 30" with 3-Burner Hot Plate (except 36 RLDS)	42 lbs.	Honeymoon Suite Bedroom with Side Aisle Wardrobe Delete (34 RKSA, 36 RLSD, 36 RKSA, 36 SADS, 39 RKLC, 40 RLKF)	272 lbs.
Microwave Oven Non-Convection 30" (except 36 RLDS)	89 lbs.	Luxurious Pillow Top Mattress in place of Standard	10 lbs.
Refrigerator Dometic 7732 Side-by-Side (except 33 WRKD, 34 RKSA, 36 RLDS, 36 SADS, 39 RLDK, 40 CKDB)	47 lbs.	Padded Vanity Stool	20 lbs.
Safe	50 lbs.	Side Aisle Wardrobe Delete (34 RKSA, 36 RKSA, 36 RLSD, 36 SADS, 39 RKLC, 40 RLKF)	137 lbs.
Satellite Dish (Winegard) with Automatic Lift System (does not include DSS receiver)	70 lbs.	Sofa Cocktail Table with Beveled Glass Top	85 lbs.
Satellite Dish (Winegard) with Manual System (does not include DSS receiver)	13 lbs.	Sofa Flexsteel Hide-A-Bed (except 40 LSDK, 40 RLKF) in place of Standard	
Security System	2 lbs.	Sofa Flexsteel Magic Bed in place of Standard (except 40 LSDK, 40 RLKF)	
Surround Sound Home Entertainment System in place of Standard Stereo	167 lbs.	Sofa Storage Cabinet (except 36 RLDS, 36 SADS, 39 RKLC, 40 LSDK, 40 RLKF)	37 lbs.
Telephone Jack Interior (extra)	1 lbs.	Chassis Features	
TV Color 13" AC (in bedroom)	24 lbs.	Frame Size 16" I-Beam in place of 12" (39 RKWB, RKLC, RLDK, RLSE, 40 CKDA, CKDB, LSDK, RLKF)	250 lbs.
TV Color 32"	200 lbs.	Granning Air Suspension in place of Standard	175 lbs.
TV Jack (extra)	1 lbs.	Suspension Mor-Ryde with Heavy Duty Shock Absorbers	25 lbs.
VCR with Remote	11 lbs.	Electrical Features	
Washer/Dryer Prep	22 lbs.	Flexible 50 AMP Power Cord	0 lbs.
Washer/Dryer Sears	232 lbs.	Generator 6.5 KW Onan on Slides, Automatic Changeover and Battery	
Water Heater 10 Gallon Gas/Electric with Direct Spark Ignition	0 lbs.	Generator 6.5 KW Onan with Automatic Changeover and Battery	
Cabinets & Furniture		Generator Gas Tank	5 lbs.
Bed King (72"x80") (available in slideout but not with vanity center, dresser center or large cabover slideout)	29 lbs.	Generator LP Gas Conversion	5 lbs.
Bed Twins (not available with cabover slideout)	102 lbs.	Generator Prep (automatic changeover & carbon monoxide detector)	
		Lights Exterior Security (one each side)	2 lbs.
		Lights Exterior Security (two each side)	4 lbs.
		Recept 110 Volt (Extra)	1 lbs.
		Recept 12 Volt (Extra)	1 lbs.
		Solar Prep (12 volt wire from roof to battery compartment)	1 lbs.
		Exterior Features	
		Hitch Plate & Bracket 21000#	
		Jacks Stabilizers 12 Volt Power Twins A&E in place of Standard (1 pair)	20 lbs.
		Jacks Stabilizers Extra	40 lbs.
		Roof & Radius Top Wrap Gel-Coated Fiberglass	10 lbs.
		Roof Rack & Ladder	4 lbs.
		Roof Rubber	8 lbs.
		Slideout in Cabover with Side Aisle Wardrobe Delete (34 RKSA, 36 RLSD, 36 RKSA, 36 SADS, 39 RKLC, 40 RLKF)	491 lbs.
		Slideout in Cabover with Side Aisle Wardrobe Delete & Dresser Center (34 RKSA, 36 RLSD, 36 RKSA, 36 SADS, 39 RKLC, 40 RLKF)	616 lbs.
		Slideout in Cabover with Side Aisle Wardrobe Delete & Vanity Center (34 RKSA, 36 RLSD, 36 RKSA, 36 SADS, 39 RKLC, 40 RLKF)	613 lbs.
		Slideout Large in Cabover (36 RKWB, 36 SKDS) (not available with dresser center or vanity center)	468 lbs.
		Stone Guard Pull Down Vinyl Recessed in Front Fiberglass Cap	15 lbs.
		Interior Features	
		Floor Covering, Ceramic Tile in Bath	75 lbs.
		State Seal	0 lbs.
		Plumbing / Bath Features	
		Enclosed Stool Room with Ceramic Shower (33 WRKD, 34 RLDK, 34 RLWB)	9 lbs.
		Heat Pads for Holding Tanks 110 Volt	2 lbs.
		Shower Corner	10 lbs.
		Stool Room Unenclosed	-27 lbs.
		Water Filtering System with Drink Dispenser (kitchen)	5 lbs.
		Windows, Awnings, Vents	
		Awning Side A&E 8500	110 lbs.
		Awning Side A&E 9000	128 lbs.
		Awning Window A&E 8500	5 lbs.
		Awning Window A&E 9000	5 lbs.
		Step 12 Volt Automatic (36 RLDS, 36 SADS, 36 SKDS, 39 RLSE & with 16" Frame Option)	7 lbs.
		Vent 12 Volt Fantastic with Rain Sensor	11 lbs.
		Vent 12 Volt Fantastic with Rain Sensor Vented through Central Air Duct	11 lbs.
		Vent 12 Volt with Wall Switch, Extra	5 lbs.
		Window Picture 48"x48" (door side of cabover) (not available with vanity or dresser option)	20 lbs.
		Window Safety Glass Dark Tinted	0 lbs.
		Windows Safety Glass Storms	30 lbs.
		Windows Safety Glass Thermopane Dark Tinted	400 lbs.



Kountry Aire® 5th Wheel

1997 • Standard Features

Air Conditioning & Heating

Air Conditioner Central Brisk Air 13.5M
BTU (1)
Heat In Floor Ducted
LP Gas Bottles 2-40# with Automatic
Regulator & See Level Gauges on Slides

Appliances & Accessories

Cable TV Connection
Ceiling Fan
Microwave Prep
Range Cover Laminated with Matching
Countertop Material
Range Hood with Light & Fan
(except 36 RLDS)
Range Wedgewood 3-Burner with Black
Glass Oven Door
Refrigerator Dometic Royale 3862
Refrigerator Front Framed Hardwood
Raised Panel
Satellite Dish Prep Only (Winegard) with
Phone/TV Jack & 110 Volt Recept
Stereo AM/FM Cassette with Clock
Telephone Connection with 1 Phone Jack
TV Antenna with Power Booster & 2 Jacks
TV Jack for Exterior Use on Door Side
VCR Prep with TV Video Switch
Water Heater 10 Gallon Gas/Electric
with Reigniter

Cabinets & Furniture

Bed Queen (60"x80") with Pillow Top Mattress
Cabinetry Oak Hardwood with Raised Panel
Cathedral Doors
Chair End Table with Beveled Glass Top
(except 40 LSDK)
Chair Flexsteel Swivel Glider/Recliner
(except 40 LSDK)
Corian Countertop in Kitchen with
Recessed Sink

Cabinets & Furniture (continued)

Corian Countertops & Lavatory Bowl in Bath
Dinette Table with Extension Top and Four
Upholstered Chairs (36 RLDS)
Dinette Table with Glass Top and Four
Upholstered Chairs (except 36 RLDS)
Drawers with Metal Guides & Side Rollers
Lazy Susan in Kitchen Overhead Cabinet
Lifts for Convenient Storage
Under Fixed Beds
Molded Silverware Divider Tray
Pull Out Pantry (except 33 WRKD,
34 RKSA, 36 RKSA, 36 RKWB,
36 SADS, 39 RKWB, 40 CKDB)
Sofa Flexsteel Residential Non-Sleeper
(except 40 LSDK, 40 RLFK)
Sofa Flexsteel Sectional with 68"
Hide-A-Bed & Inclinor (40 LSDK)
Sofa Flexsteel Sectional with 68"
Hide-A-Bed (40 RLFK)

Chassis Features

Easy Lube Equalizers
Frame Size 12" I-Beam & Molded Wrap
Maximum Storage (except 36 RLDS,
36 SADS, 36 SKDS, 39 RLSE)
Frame Size 16" I-Beam & Molded Wrap
Maximum Storage (36 RLDS, 36 SADS,
36 SKDS, 39 RLSE)
Shock Absorbers
Skid Bars for Rear Bottom Protection
Spare Tire

Electrical Features

Battery, Disconnect Switch
Battery, Thermoil (2-12 volt)
Converter 75 AMP with Charger
Electrical Service 50 AMP
Lighting Fluorescent Recessed in Ceiling and
Overhead Cabinets

Electrical Features (continued)

Lights in Raised Bath Floor Storage Area
Compartment with Door Switches
Lights in Wardrobes with Automatic Switches
Lights Interior Courtesy
Midship Side Turn Signals
Recepts 110 Volt with Ground Fault
Interrupter (interior & exterior)

Exterior Features

12 Volt Powered Front Jacks Rated at 8000
lbs with Independent Operation
Exterior Front & Rear Gel-Coated Fiberglass
End Caps
Exterior Sides Gel-Coated Fiberglass
Exterior Storage in Rear Cap
Jack Stabilizer (1 pair)
Roof Painted Aluminum
Slideout Large with Patented Flat Floor
(see floorplans for availability & layout)
Snaps for Fifth Wheel Jacks
Stabilizer for Fifth Wheel Pin (built-in)
Storage Drawer in Front Compartment Area

Interior Features

Bedsprad Quilted with Matching Shams &
Accent Pillow
Ceiling Woven Soft Touch
Decorative Border in Kitchen and Bath Area
Decorative Wall Clock & Mirror
Floor Covering, Carpet Staintech, 45 oz.
100% Nylon Plush Saxony
Floor Covering, Hardwood Plank in
Kitchen and Foyer
Sink Covers, Two
Smoke Detector & 5BC Fire Extinguisher
Window Garnish (residential style)
Window Treatment Day/Night Pleated
Shades & Lined Drapes
Window Treatment Mini Blinds (kitchen)

Plumbing / Bath Features

Bath Accessories Brass (1 each-towel bar,
tissue holder, towel ring & robe hook)
Faucet for Kitchen Sink Single Handle
High Rise (Moen)
Faucet for Shower & Lavatory Single
Handle (Moen)
Monitor Panel
Sewage Holding Tank Rinse
Stool China with Spray Attachment
Tub/Shower Fiberglass with Enclosure
Tub/Shower Wall Light
Winterize Convenience Package
(with water heater bypass)

Construction Features

Insulation 1/4" Foam Board Exterior Roof
Insulation Fiberglass R7 Sidewalls
R19 Floor & Roof
Insulation Foam 5/8" Laminated in
Sidewalls & Ceiling
Rear Bumper with Slide Out Tray for
Spare Tire
Structure Aluminum Sidewalls & Roof
Structure Widebody
Underbelly Enclosed Aluminum with
Laminated 5/8" Foam

Windows, Awnings, Vents

Door Bell
Exterior Lighted Acrylic Assist Handle
(at main entrance door)
Radius Entrance Door with Deadbolt &
Lighted Step
Skylight in Bath Area with Soft Shade
Step Triple
Vent 12 Volt in Bath Area with Wall Switch
Windows Radius Torque

Kountry Aire® 5th Wheel

Chassis • Sizes • Capacities Specifications

Kountry Aire® 5th Wheel Specifications

Unit	No. Axles	Axle Cap.	Tire	GAWR	GVWR	Approx. Length	Approx. Height	Approx. Width	Approx. Weight	Approx. Hitch Weight	Fresh Water Cap.	Grey Water Cap.	Sewage Water Cap.	Approx. Hitch Height	Heat Cap.
KA 33WRKD	2	7,000	235-85 R 16 G	7,000	15,000	34'-5"	11'-11"	101"	11,100	2,000	100 Gal	50 Gal	50 Gal	47"	40,000
KA 34RKSA	2	7,000	235-85 R 16 G	7,000	15,000	35'-10"	11'-11"	101"	11,500	2,645	100 Gal	50 Gal	50 Gal	47"	40,000
KA 34RLDK	2	7,000	235-85 R 16 G	7,000	15,000	35'-8"	11'-11"	101"	12,030	2,050	100 Gal	50 Gal	50 Gal	47"	40,000
KA 34RLWB	2	7,000	235-85 R 16 G	7,000	15,000	35'-8"	11'-11"	101"	12,030	2,050	100 Gal	50 Gal	50 Gal	47"	40,000
KA 36RKSA	3	7,000	235-85 R 16 E	6,000	18,000	37'-2"	11'-11"	101"	12,375	2,475	100 Gal	50 Gal	50 Gal	47"	55,000
KA 36RKWB	3	7,000	235-85 R 16 E	6,000	18,000	37'-2"	11'-11"	101"	12,180	2,560	100 Gal	50 Gal	50 Gal	47"	55,000
KA 36RLDS	3	7,000	235-85 R 16 E	6,000	18,000	37'-2"	11'-11"	101"	13,540	2,700	100 Gal	50 Gal	50 Gal	47"	55,000
KA 36RLSA	3	7,000	235-85 R 16 E	6,000	18,000	37'-2"	11'-11"	101"	12,200	2,450	100 Gal	50 Gal	50 Gal	47"	55,000
KA 36SADS	3	7,000	235-85 R 16 E	6,000	18,000	37'-2"	11'-11"	101"	13,250	3,175	100 Gal	50 Gal	50 Gal	47"	55,000
KA 36SKDS	3	7,000	235-85 R 16 E	6,000	18,000	37'-2"	11'-11"	101"	13,060	2,480	100 Gal	50 Gal	50 Gal	47"	55,000
KA 39RKLC	3	7,000	235-85 R 16 E	6,000	18,000	39'-2"	11'-11"	101"	12,850	2,570	100 Gal	50 Gal	50 Gal	47"	55,000
KA 39RKWB	3	7,000	235-85 R 16 E	6,000	18,000	39'-2"	11'-11"	101"	12,920	2,580	100 Gal	50 Gal	50 Gal	47"	55,000
KA 39RLDK	3	7,000	235-85 R 16 E	6,000	18,000	39'-2"	11'-11"	101"	13,275	2,250	100 Gal	50 Gal	50 Gal	47"	55,000
KA 39RLSE	3	7,000	235-85 R 16 E	6,000	18,000	39'-2"	11'-11"	101"	13,200	2,250	100 Gal	50 Gal	50 Gal	47"	55,000

Mountain Aire® 5th Wheel

1997 • Optional Features

		Approx Weight									
Air Conditioning & Heating			Cabinets & Furniture			Electrical Features			Interior Features		
Air Conditioner Brisk Air 13.5M BTU (extra)	95 lbs.		Bed King (72"x80") (available in slideout but not with vanity center, dresser center or large cabover slideout)	29 lbs.		Battery Disconnect Switch	1 lbs.		Floor Covering, Carpet in Bath	30 lbs.	
Air Conditioner Brisk Air 15M BTU (extra)	100 lbs.		Bed Twins (not available with cabover slideout)	102 lbs.		Electrical Service 50 AMP	9 lbs.		Floor Covering, Hardwood Plank in Kitchen and Foyer Area	30 lbs.	
Air Conditioner Brisk Air 15M BTU in place of 13.5M	5 lbs.		Built In Dinette with Drawers in place of Free Standing Table/Chairs	23 lbs.		Generator 6.5 KW Onan on Slides, Automatic Changeover and Battery	5 lbs.		State Seal	0 lbs.	
LP Gas Bottles 2-40# with Automatic Regulator & See Level Gauges On Slides	20 lbs.		Cabinetry Bleached Oak Hardwood with Raised Panel Doors	25 lbs.		Generator Gas Tank	5 lbs.		Plumbing / Bath Features		
LP Leak Detector	1 lbs.		Cabinetry Cherry Hardwood with Raised Panel Doors	25 lbs.		Generator LP Gas Conversion	5 lbs.		Enclosed Stool Room with Corner Shower (33 WRKD, 34 RLDK, 34 RLWB)	9 lbs.	
Appliances & Accessories			Cabinetry Oak Hardware	25 lbs.		Generator Prep (automatic changeover & carbon monoxide detector)	4 lbs.		Heat Pads for Holding Tanks 110 Volt	2 lbs.	
Basic Sony Satellite Digital Receiver (does not include programming)	37 lbs.		Chair Flexsteel Petite Glider/Recliner	45 lbs.		Lighting Fluorescent Recessed in Ceiling and Overhead Cabinets	1 lbs.		Sewage Holding Tank Rinse	1 lbs.	
Ceiling Fan	10 lbs.		Chair Flexsteel Swivel Glider/Recliner (extra)	60 lbs.		Lights Exterior Security (one each side)	2 lbs.		Shower Corner	10 lbs.	
Food Center Blender in Kitchen Countertop	3 lbs.		Corian Countertop Bath & Kitchen (with recessed kitchen sink)	20 lbs.		Lights Exterior Security (two each side)	4 lbs.		Stool China with Spray Attachment	31 lbs.	
Icemaker Added to Dometic Refrigerator (except 36 RLDS)	5 lbs.		Desk with Phone Jack & 110 Volt Recept in Slideout (36 RKWB, 39 RKWB, 40 RKWB)	25 lbs.		Recept 110 Volt Extra	1 lbs.		Stool Room Unenclosed	-27 lbs.	
Icemaker U Line	57 lbs.		Dinette Table Hidden Leaf in place of Free Standing Table	50 lbs.		Recept 12 Volt Extra	1 lbs.		Water Filtering System with Drink Dispenser (kitchen)	5 lbs.	
Microwave Oven 22"	31 lbs.		French Doors in Bedroom (except 33 WRKD, 34 RLDK, 34 RLWB) (not available with options 7K040 or 7M620)	83 lbs.		Solar Prep (12 volt wire from roof to battery compartment)	1 lbs.		Windows, Awnings, Vents		
Microwave Oven Convection 30" with 3-Burner Hot Plate (except 36 RLDS)	42 lbs.		Honeymoon Suite Bedroom with Side Aisle Wardrobe Delete (34 RKSA, 36 RLSA, 36 RKSA, 36 SADS, 39 RKLC, 40 RLFK)	272 lbs.		Exterior Features			Awning Side A & E 8500	110 lbs.	
Microwave Oven Non-Convection 30" (except 36 RLDS)	89 lbs.		Padded Vanity Stool	20 lbs.		Hitch Plate and Bracket 21000#			Awning Side A & E 9000	128 lbs.	
Refrigerator Dometic 7732 Side-by-Side (except 33 WRKD, 34 RKSA, 36 RLDS, 36 SADS, 39 RLDK, 40 CKDB)	47 lbs.		Pull Out Pantry (except 33 WRKD, 34 RKSA, 36 SADS, 40 CKDB)	10 lbs.		Jacks Stabilizers 12 Volt Power Twins A&E in place of Standard (1 pair)	20 lbs.		Awning Window A & E 8500	5 lbs.	
Refrigerator Front Hardwood Raised Panel	19 lbs.		Side Aisle Wardrobe Delete (34 RKSA, 36 RKSA, 36 RLSA, 36 SADS, 39 RKLC, 40 RLFK)	137 lbs.		Jacks Stabilizers Extra	40 lbs.		Awning Window A & E 9000	5 lbs.	
Safe	50 lbs.		Sofa Cocktail Table	75 lbs.		Roof Gel-Coated Fiberglass	8 lbs.		Door Bell	2 lbs.	
Satellite Dish (Winegard) with Automatic Lift System (does not include DSS Receiver)	70 lbs.		Sofa Flexsteel Hide-A-Bed in place of Standard (except 40 LSDK, 40 RLFK)	75 lbs.		Roof Rack & Ladder	4 lbs.		Exterior Lighted Acrylic Assist Handle (main entrance door)	1 lbs.	
Satellite Dish (Winegard) with Manual System (does not include DSS Receiver)	13 lbs.		Sofa Storage Cabinet (except 36 RLDS, 36 SADS, 39 RKLC, 40 LSDK, 40 RLFK)	37 lbs.		Roof Rubber	8 lbs.		Skylight in Bathroom with Soft Shade	2 lbs.	
Security System	2 lbs.		Chassis Features			Slideout in Cabover with Side Aisle Wardrobe Delete (34 RKSA, 36 RLSA, 36 RKSA, 36 SADS, 39 RKLC, 40 RLFK)	616 lbs.		Step 12 Volt Automatic (36 RLDS, 36 SADS, 36 SKDS, 39 RLSE & with 16" frame option)	7 lbs.	
Surround Sound Home Entertainment System in place of Standard Stereo	167 lbs.		Spare Tire (16" E range) (except 36 RKSA, 36 RKWB, 36 RLSA)	90 lbs.		Slideout in Cabover with Side Aisle Wardrobe Delete and Vanity Center (34 RKSA, 36 RLSA, 36 RKSA, 36 SADS, 39 RKLC, 40 RLFK)	613 lbs.		Vent 12 Volt Fantastic with Rain Sensor	11 lbs.	
Telephone Jack Interior (extra)	1 lbs.		Spare Tire (16" G range) (36 RKSA, 36 RKWB, 36 RLSA)	90 lbs.		Slideout Large in Cabover (36 RKWB, 36 SKDS) (not available with dresser center or vanity center)	468 lbs.		Vent 12 Volt Fantastic with Rain Sensor Vented through Central Air Duct	11 lbs.	
TV Color 13" AC (in bedroom)	24 lbs.		Suspension Mor-Ryde with Heavy Duty Shock Absorbers	25 lbs.		Snaps for Fifth Wheel Jacks	1 lbs.		Vent 12 Volt with Wall Switch, Extra	5 lbs.	
TV Color 32"	200 lbs.					Stabilizer for Fifth Wheel Pin (built-in)	25 lbs.		Window Picture 48" x 48" (door side of cabover) (not available with vanity or dresser option)	20 lbs.	
TV Jack (extra)	1 lbs.					Stone Guard Pull Down Vinyl Recessed in Front Fiberglass Cap	15 lbs.		Window Safety Glass Dark Tinted	0 lbs.	
TV Jack for Exterior Use on Door Side	1 lbs.								Windows Safety Glass Storms	30 lbs.	
VCR Prep with TV Video Switch	1 lbs.								Windows Safety Glass Thermopane Dark Tinted	400 lbs.	
VCR with TV Video Switch & VCR Prep	12 lbs.										
Washer/Dryer Prep	22 lbs.										
Washer/Dryer Sears	232 lbs.										
Water Heater 10 Gallon Gas/Electric with Direct Spark Ignition	0 lbs.										



Mountain Aire® 5th Wheel

1997 • Standard Features

Air Conditioning & Heating

Air Conditioner Central Brisk Air 13.5M BTU (1)
Heat In Floor Ducted
LP Gas Bottles 2-30# with Automatic
Regulator

Appliances & Accessories

Cable TV Connection
Microwave Prep
Range Cover
Range Hood with Light & Fan (except 36 RLDS)
Range Wedgewood 3-Burner with Black
Glass Oven Door
Refrigerator Dometic Royale 3862
Satellite Dish Prep Only (Winegard) with
Phone/TV Jack & 110 Volt Recept
Stereo AM/FM Cassette with Clock
Telephone Connection with 1 Phone Jack
TV Antenna with Power Booster & 2 Jacks
Water Heater 10 Gallon Gas/Electric with
Reigniter

Cabinets & Furniture

Bed Queen (60"x80")
Cabinetry Oak with Raised Panel
Cathedral Doors
Chair End Table (except 40 CKDB or LSDK)
Chair Flexsteel Swivel Glider/Recliner
(except 40 LSDK)
Dinette Table with Hardwood Top and 4
Chairs (floorplans with slideout)

Cabinets & Furniture (continued)

Drawers with Metal Guides & Side Rollers
Lifts for Convenient Storage Under
Fixed Beds
Molded Silverware Divider Tray
Sofa Flexsteel Magic Bed (except 40 LSDK,
40 RLFK)
Sofa Flexsteel Sectional with 68" Hide-A-Bed
& Incliner (40 LSDK)
Sofa Flexsteel Sectional with 68" Hide-A-Bed
(40 RLFK)

Chassis Features

Easy Lube Equalizers
Frame Size 12" I-Beam & Molded Wrap
Maximum Storage (except 36 RLDS,
36 SADS, 36 SKDS, 39 RLSE)
Frame Size 16" I-Beam & Molded Wrap
Maximum Storage (36 RLDS, 36 SADS,
36 SKDS, 39 RLSE)
Shock Absorbers
Skid Bars for Rear Bottom Protection

Electrical Features

Battery, Thermoil (2-12 volt)
Converter 75 AMP with Charger
Electrical Service 30 AMP
Lights in Raised Bath Floor Storage Area
Compartment with Door Switches
Lights in Wardrobes
Recepts 110 Volt with Ground Fault
Interrupter (interior & exterior)

Exterior Features

12 Volt Powered Front Jacks
Exterior Front & Rear Gel-Coated Fiberglass
End Caps
Exterior Sides Gel-Coated Fiberglass
Exterior Storage in Rear Cap
Jacks Stabilizer (1 pair)
Roof Painted Aluminum
Slideout Large with Patented Flat Floor
(see floorplans for availability & layout)

Interior Features

Bedsprad Quilted with Reversed Shams &
Accent Pillow
Ceiling Woven Soft Touch
Decorative Wall Clock & Mirror
Floor Covering, Carpet Staintech, 45 oz
100% Nylon Plush Saxony
Floor Covering, Vinyl in Kitchen, Bath
and Foyer
Sink Covers, Two
Smoke Detector & 5 BC Fire Extinguisher
Window Treatment Day/Night Pleated Shades
& Lined Drapes
Window Treatment Mini Blinds (kitchen)

Plumbing / Bath Features

Bath Accessories Brass (1 each-towel bar,
tissue holder, towel ring & robe hook)
Monitor Panel
Stool Aqua Magic IV
Tub/Shower Fiberglass with Enclosure

Plumbing / Bath Features (continued)

Tub/Shower Wall Light
Winterize Convenience Package
(with water heater bypass)

Construction Features

Insulation 1/4" Foam Board Exterior Roof
Insulation Fiberglass R7 Sidewalls,
R19 Floor & Roof
Insulation Foam 5/8" Laminated in Sidewalls
& Ceiling
Rear Bumper with Slide Out Tray for
Spare Tire
Structure, Aluminum Sidewalls & Roof
Structure, Widebody
Underbelly Enclosed Aluminum with
Laminated 5/8" Foam

Windows, Awnings, Vents

Radius Entrance Door with Deadbolt &
Lighted Step
Step Triple
Vent 12 Volt in Bath Area with Wall Switch
Windows Radius Torque

Mountain Aire® 5th Wheel

Chassis • Sizes • Capacities Specifications

Mountain Aire® 5th Wheel Specifications

Unit	No. Axles	Axle Cap.	Tire	CAWR	GVWR	Approx. Length	Approx. Height	Approx. Width	Approx. Weight	Approx. Hitch Weight	Fresh Water Cap.	Grey Water Cap.	Sewage Water Cap.	Approx. Hitch Height	Heat Cap.
MA 33WRKD	2	7,000	235-85 R 16 E	6,000	14,000	34'-5"	11'-11"	101"	11,000	1,870	100 Gal	50 Gal	50 Gal	47"	40,000
MA 34RKSA	2	7,000	235-85 R 16 E	6,000	14,000	35'-10"	11'-11"	101"	11,000	2,420	100 Gal	50 Gal	50 Gal	47"	40,000
MA 34RLDK	2	7,000	235-85 R 16 E	6,000	14,000	35'-8"	11'-11"	101"	11,300	2,035	100 Gal	50 Gal	50 Gal	47"	40,000
MA 34RLWB	2	7,000	235-85 R 16 E	6,000	14,000	35'-8"	11'-11"	101"	11,300	2,035	100 Gal	50 Gal	50 Gal	47"	40,000
MA 36RKWB	2	7,000	235-85 R 16 G	7,000	15,000	37'-2"	11'-11"	101"	11,700	2,225	100 Gal	50 Gal	50 Gal	47"	55,000
MA 36RKSA	2	7,000	235-85 R 16 G	7,000	15,000	37'-2"	11'-11"	101"	11,700	2,100	100 Gal	50 Gal	50 Gal	47"	55,000
MA 36RLDS	3	6,000	235-85 R 16 E	6,000	18,000	37'-2"	11'-11"	101"	13,550	2,700	100 Gal	50 Gal	50 Gal	47"	55,000
MA 36RLSA	2	7,000	235-85 R 16 G	7,000	15,000	37'-2"	11'-11"	101"	11,700	2,100	100 Gal	50 Gal	50 Gal	47"	55,000
MA 36SADS	3	6,000	235-85 R 16 E	6,000	18,000	37'-2"	11'-11"	101"	13,075	2,875	100 Gal	50 Gal	50 Gal	47"	55,000
MA 36SKDS	3	6,000	235-85 R 16 E	6,000	18,000	37'-2"	11'-11"	101"	13,050	2,475	100 Gal	50 Gal	50 Gal	47"	55,000
MA 39RKLC	3	6,000	235-85 R 16 E	6,000	18,000	39'-2"	11'-11"	101"	12,600	2,250	100 Gal	50 Gal	50 Gal	47"	55,000
MA 39RKWB	3	6,000	235-85 R 16 E	6,000	18,000	39'-2"	11'-11"	101"	12,700	2,300	100 Gal	50 Gal	50 Gal	47"	55,000
MA 39RLDK	3	6,000	235-85 R 16 E	6,000	18,000	39'-2"	11'-11"	101"	12,900	2,450	100 Gal	50 Gal	50 Gal	47"	55,000
MA 39RLSE	3	6,000	235-85 R 16 E	6,000	18,000	39'-2"	11'-11"	101"	13,200	2,500	100 Gal	50 Gal	50 Gal	47"	55,000
MA 40CKDA	3	6,000	235-85 R 16 E	6,000	18,000	40'-11"	11'-11"	101"	13,000	2,470	100 Gal	50 Gal	50 Gal	47"	55,000
MA 40CKDA	3	6,000	235-85 R 16 E	6,000	18,000	40'-11"	11'-11"	101"	13,000	2,470	100 Gal	50 Gal	50 Gal	47"	55,000

MOUNTAIN AIRE KOUNTRY AIRE



Mountain Aire® 5th Wheel



Kountry Aire® 5th Wheel



MOUNTAIN AIRE KOUNTRY AIRE

1997 5th Wheels



1997 Mountain Aire® 5th Wheel



1997 Kountry Aire® 5th Wheel

We invite you to visit our new state-of-the-art production facility
in Nappanee, Indiana. Plant tours are offered at
10:00 a.m. and 1:00 p.m., Monday—Friday.

Newmar Kountry Klub

Don't forget to check out the Klub—the Newmar Kountry Klub,
that is. All you need for eligibility is to be a proud owner of any
of the fine Newmar recreational vehicles.

Compliments of:



An American Tradition of Excellence.

355 N DELAWARE ST

KOUNTRY AIRE

ENJOYING YOUR
FAVORITE MOVIES
AND MUSIC IS
EASY WITH THE
FINELY CRAFTED
ENTERTAINMENT
SYSTEM.



YOU WON'T MISS HAVING TO STEP UP OR DOWN WITH NEWMAR'S PATENTED FLAT FLOOR SLIDEOUT. ENJOY EXTRA ROOM AND A BEAUTIFULLY DESIGNED INTERIOR WITH RICH FABRICS AND WOOD ACCENTING.

MOUNTAIN AIRE

1997 5th Wheel

With the Mountain Aire® 5th Wheel, you can set your expectations high and know that they'll be met. They may even be exceeded as you learn more about the functional durability engineered into each unit.

"Value" is something Newmar builds into every 5th Wheel produced, which makes owning a Mountain Aire® as much fun as traveling with one. By incorporating hassle free features like slideout rear bumper with spare and a built-in exterior clean-up station, you'll reduce set-up time and enjoy more leisure time.



THESE ROOMS WERE PLANNED FOR COMFORT. EXPERIENCE HOW BEDROOM BEAUTY GREETS BATHROOM CONVENIENCE.

A COMFORTABLE FLEXSTEEL® GLIDER/RECLINER WITH END TABLE IS THE PERFECT SPOT FOR READING, WATCHING TV OR JUST REFLECTING ON YOUR JOURNEY.



1997 MOUNTAIN AIRE



WITH A CONTEMPORARY LOOK!





OLD WORLD CRAFTSMANSHIP

