

# GET SERIOUS ABOUT EFFICIENCY.



## SPECTRUM



# A TRULY EFFICIENT MOTOR HOME ISN'T SIMPLY BUILT SMALLER. IT'S BUILT SMARTER.

Spectrum® is an efficient motor home. It's not so much small as it is smart. And true efficiency isn't determined solely by size.



*Spectrum +2 DB.*

As you can see, Spectrum has a spacious feel. There's a lot more room than you might expect, which is especially surprising in a motor home that's supposed to be small. But there's a good reason for that. A simple reason, actually. The floorplan was designed to maximize every inch of available space. And that's just plain smart.

That's smart in any motor home, no matter what the size. Just making it small doesn't automatically imply efficiency.

In fact, we built a new Spectrum this year which is actually larger than last year's. But it's every bit as smart.

Because we added a cabover for extra sleeping space. Now your Spectrum can sleep two more people in comfort.

We call this new model Spectrum +2, for obvious reasons. Other than the new cabover, Spectrum +2 is the same efficient design, the same efficient use of space, and the same efficient handling as our Spectrum without cabover.

Both even have efficient looking exteriors. The only difference is, Spectrum is a little more fuel efficient. Spectrum +2 is more efficient for sleeping.

You can decide which Spectrum will be better for you.

## **SPECTRUM IS BUILT SMARTER.**

Anybody can build a smaller, lighter motor home. At Itasca®, we think that's only half the battle. If you're really serious about building an efficient motor home, just making it lighter isn't a very comprehensive answer.

You have to go way back to the design stage and give some serious thought to the problem. You have to think small from the beginning. You have to think efficient from the beginning. And you have to think smart from the beginning.

At Itasca, we try to give you as much as possible in the least amount of space. That may sound like the obvious thing to do in any motor home, but you'd be surprised at how



many manufacturers don't have this philosophy. It is especially important in a small motor home. Because efficiency isn't how many things you leave out, it's how many things you can get in.

And Spectrum gets a lot of things in. We weren't able to give you extra sleeping space in one Spectrum, so we built another, made it slightly larger, and did give you the sleeping space. Most manufacturers wouldn't go this extra step. But we're not most manufacturers.

## **SPECTRUM GIVES YOU THE MOST FOR YOUR MONEY.**

Let's face it. Buying a motor home is

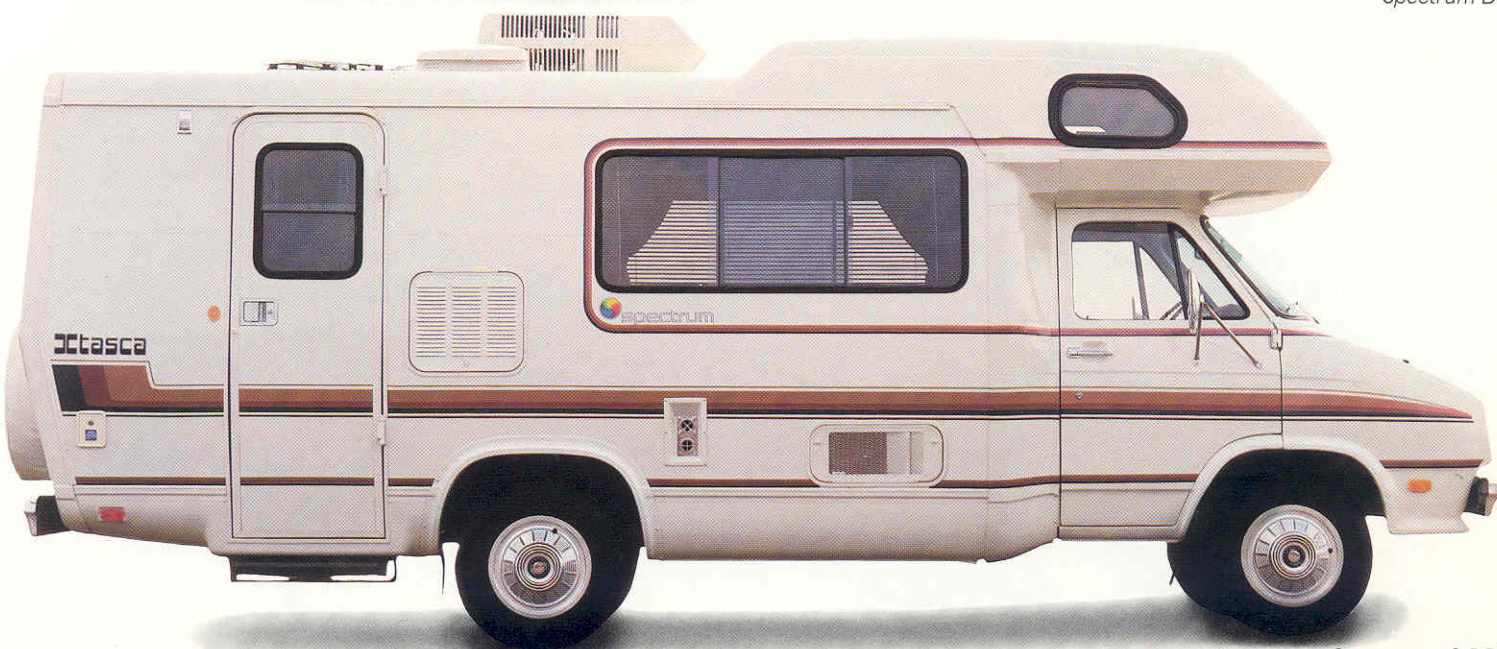
serious business. It's a lot of money. And you should be concerned about getting the most for your money. You need to decide for yourself what your needs are. Do you need fuel economy more than extra sleeping space, or vice versa?

We've tried to anticipate your needs. We've given you two models of Spectrum to accommodate two different needs. They're both efficient, and they're both smart.

So if you really want to get the most for your money, if you're really serious about buying the most motor home you can get, get a motor home where the efficiency is smarter, not just smaller. Get Spectrum. Or Spectrum +2.



*Spectrum DH.*



*Spectrum +2 DB.*



# EFFICIENCY DOESN'T MEAN NO LUXURY.

And that's Spectrum. Practical luxury. Streamlined and fuel efficient on the outside, homey and plush on the inside.

coordinated, and as well decorated as it is well designed. But what else would you expect from Itasca?



*Spectrum DH.*

Sure, other manufacturers have tried to duplicate it. But our Spectrum is lighter, more maneuverable and more economical. And this year, we have something else they can't match. Spectrum +2.

## **SPECTRUM+2.**

Spectrum +2 has a full sized cabover bunk. Which gives you a motor home with comfortable sleeping capacity for six adults in a 22 foot package.

And, of course, an interior you'd expect to find in a motor home selling for twice the price. There are plenty of storage cabinets of light aircraft-type design. The wardrobe, vanity and medicine chest also match this decor. The sprung couch, swivel bucket seats and dinette and just plain, well-made furniture. Or choose optional sprung couch with tables and 2 lounge chairs with a table.

Naturally, it's completely color-

## **THE ORIGINAL SPECTRUM.**

The original Spectrum has the same feel of luxury. With plush fabrics and upholstery, thick carpeting, handsome wall coverings, and floor plans that make every inch count.

In the Spectrum, you can choose a sprung couch up front or space saving bunk beds in the rear. Either way, it will sleep four comfortably.

But your choices don't end there. You can choose to expand your sleeping capacity to five or even six with two more Spectrum options. A pull down bunk for one, a youth bed, standard in Spectrum, which fits across the cab seats for another.

The galley is fully equipped with top brand name appliances, and room to move.





# IT MEANS PRACTICAL LUXURY.

And we made the dry bath as spacious as possible.

## **BOTH SPECTRUMS GIVE YOU MORE.**

Both Spectrum and Spectrum +2 come with special features you've come to appreciate. There's excellent visibility up front, a tilt steering wheel, tinted windows, an AM/FM stereo system with cassette player and high quality speakers, courtesy floor lights, automatic wardrobe light, a porch light, reading lights, a deluxe monitor panel which shows levels of all holding tanks, and LP fuel, and is also a digital alarm, a luxury cab with features such as deluxe door trim panels, intermittent wipers, and a unique overhead instrument panel with digital clock. All standard.

Options for both vehicles include cruise control and automotive air conditioning.

Finally, there's a system that can be installed which enables you to change from gasoline to propane at the flick of a switch.

## **SPECTRUM OVERALL.**

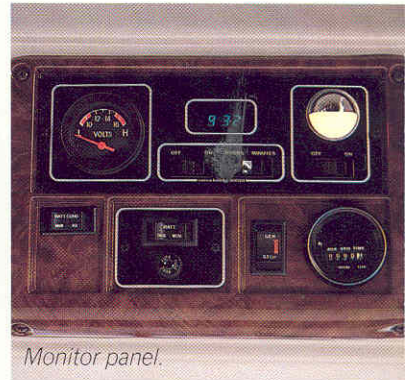
Overall, Spectrum is over all. It is engineered to have exceptionally responsive handling, to have near perfect balance from front-to-rear and from side-to-side, to have the utmost in structural integrity, and, of course, to be as efficient as possible.

High beam halogen headlamps come standard on both Spectrum and Spectrum +2.

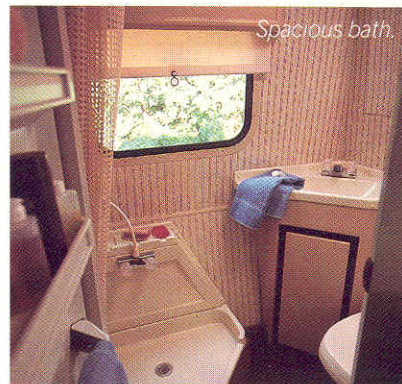
Both inside and out, Spectrum and Spectrum +2 are truly efficient. And even luxurious.



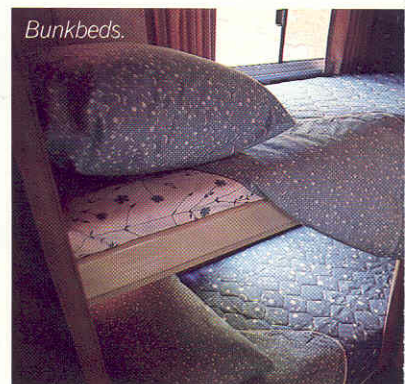
*Spring couch.*



*Monitor panel.*

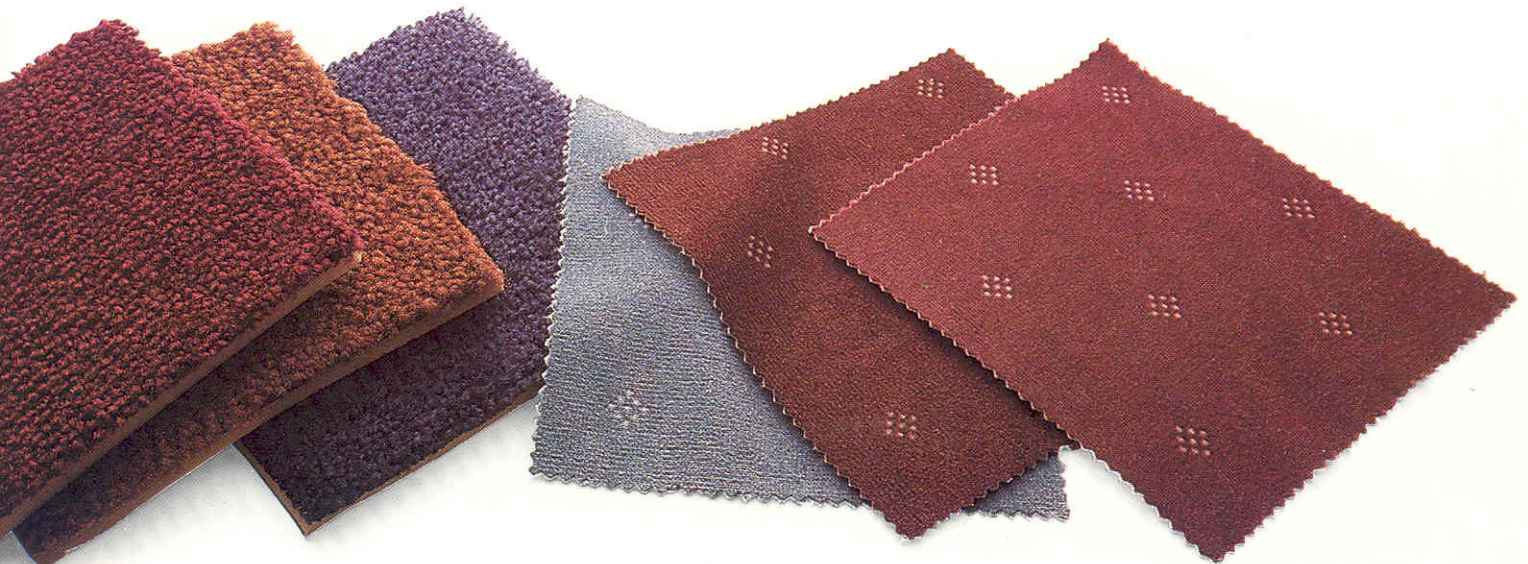


*Spacious bath.*



*Bunkbeds.*

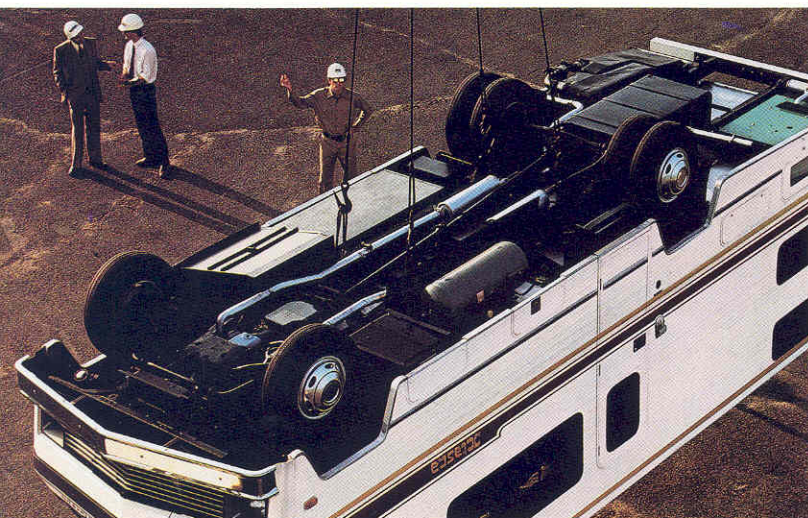
But don't let the feeling of luxury throw you off. These are economical, budget-minded vehicles both in initial cost and in operating costs. Because they're both built smart. They're both built by Itasca. And they're both built for people who are really serious about motor homes.





# GOOD CONSTRUCTION IS NOT A LUXURY.

At Itasca, we believe good construction is of absolute importance. And we design, engineer and construct each motor home for safety as well as durability. We meet or exceed all federal and state safety codes and construction specifications for motor homes. When we design a new Itasca motor home, it has to pass our own drop test.



It is this kind of dramatic testing that makes Itasca one of the best constructed motor homes on the market today. Because every test we apply teaches us that much more. For instance, in the drop test, we learned that the refrigerator and dinette can come loose. So we added steel tie-downs to correct the problem.

The entire motor home structure is also stress-analyzed by computer for strength and integrity. Even our joint construction is computer tested.

Next, units are pulled off the assembly line at random by a team of full-time quality control inspectors for a close examination of construction, craftsmanship, and adherence to tolerance.

Finally, our own engineers take a completed model out on the road for some extensive test driving, in order to learn first hand how to build them even better.

Throughout the entire process of checks and tests, our Quality Circles program encourages workers on the line to spot assembly problems and offer solutions.

## GOOD DESIGN IS PART OF GOOD CONSTRUCTION.

We start with a Chevrolet chassis. We make

sure the Gross Vehicle Weight Rating of the chassis meets or exceeds the total weight of the entire vehicle even when fully loaded for a trip. We make sure the weight is evenly distributed on the chassis from wheel to wheel and side to side.

We then add special subframe reinforcements for a more solid foundation.

One reason for our control over the design, is that nearly 80% of what goes into an Itasca is built in our own plant.

Rather than relying on outside suppliers, we build our own parts and accessories to meet our exact specifications.

So we're able to give you radius cornered doors, for instance. Our competition has to buy the regular doors with the square corners that don't match the windows.

We're able to give you electrostatically powder painted trim. The competition leaves theirs untreated.

We make our own water and holding tanks. This means we can design the tanks to fit the space instead of designing the motor home to fit the standard tanks.

Our roof is one piece, constructed for strength, and folded over the side to prevent leakage. The gas line has a rubber sleeve wherever

- 1 Tight, solid Thermo-Panel® walls
- 2 Locking-joint floor construction
- 3 Aluminum extrusion framework
- 4 Chassis "outriggers" for solid coach support
- 5 Seamless water & holding tanks
- 6 Steel refrigerator tie-downs
- 7 Design strength analyzed by computer, confirmed by drop testing
- 8 Rustproof aluminum underflooring
- 9 Extra steel supports for cab-over bunk
- 10 Solid steel front floor & cab
- 11 Rustproof rotocast rear wheel wells
- 12 Wiring contained in harness for service ease





# GOOD CONSTRUCTION IS A NECESSITY.

it runs through a frame member to prevent rubbing. That's attention to detail even where you'll never see it.

Maybe that's why our resale value is consistently one of the highest in the industry.

To see it all, and really be impressed, take a tour of our plant in Forest City, Iowa.

## GOOD DESIGN IS ALWAYS FUNCTIONAL.

The walls are all our own Thermo-Panel® construction, actually a series of layers for insulation and strength. Also quiet. That's extremely functional.

Itasca gives you a service network of experienced dealers not only nationally, but internationally. That's nice to know when you're 3,000 miles away from home.

Because of the way we design and construct our motor homes, we're able to offer you an Itasca backed by a 12 month/12,000 mile limited warranty. It's one of the most comprehensive in the industry. But we don't stop there. Itasca offers an optional 5 year/50,000 mile Traveler's Protection Plan. It's the longest lasting coverage you can get. Period.

# 50000

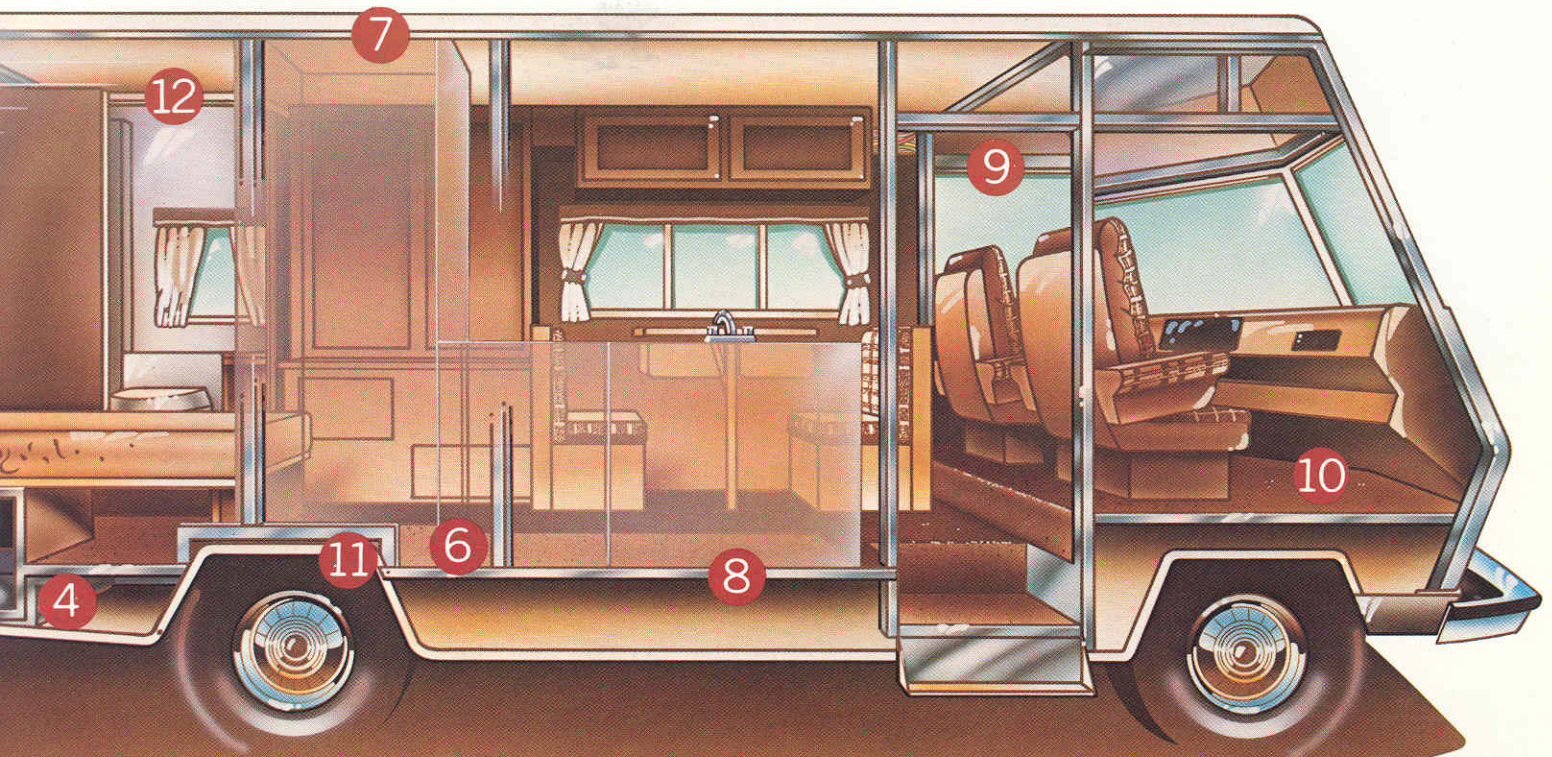
## THE BEST WAY TO BUY A MOTOR HOME IS TO COMPARE.

We want you to. Obviously, we think we'll come out looking the best.

No one can touch us on design, engineering, construction, overall quality, service, safety, or warranty and Traveler's Protection Plan.

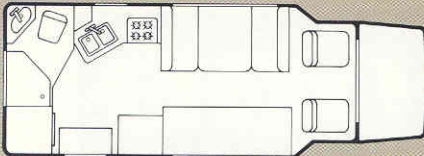
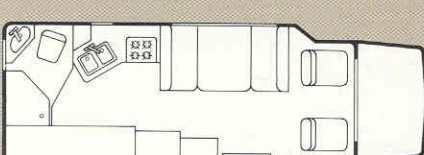
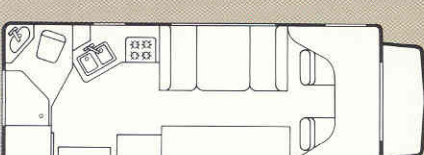
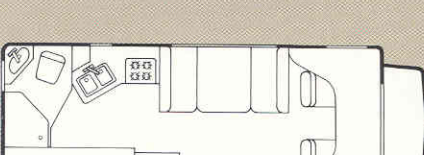
And our price is a lot lower than some companies who don't put this much time and energy into the basics. So take a good look at Itasca. We put our heart and soul into each and every motor home we build. Because we're serious about building motor homes.

We're serious about it because we know you're looking for the best motor home you can buy. All the time and energy we've spent on building them is all worth it because there are people out there who are actually as serious as we are about motor homes. People like you.



This illustration shows typical Itasca construction techniques. It is not representative of any specific model.



FLOORPLANS	EQUIPMENT	SPECIFICATIONS
	SPECTRUM DB/DH    SPECTRUM +2	SPECTRUM DB/DH    SPECTRUM +2
 <p>SPECTRUM DB</p>	AM/FM/cassette stereo    STD    STD Cruise control    OPT    OPT Tilt steering wheel    STD    STD 24,000 BTU furnace (electronic ignition)    STD    STD 4 Burner range w/oven    STD    STD Large Single Door refrigerator    STD    STD 3,500 Watt generator w/13,500 BTU roof air    OPT    OPT Deluxe monitor panel    OPT    OPT Barometer/thermometer decorator kit    OPT    OPT 32 Amp. converter/charger    STD    STD Automotive Air Conditioning    OPT    OPT 4 Gallon water heater    STD    STD TV Antenna w/jack    OPT    OPT Full tinted windows    STD    STD 5 year/50,000 mile Traveler's Protection Plan    OPT    OPT 350 Cu. in. V8 engine    STD    STD WinnAir™ Dual Fuel System    OPT    OPT	Length    22'1"    22'1" Exterior height (w/roof air)    116.4"    115" Interior height    75"    75" Exterior width    91.3"    91.3" Interior width    88"    88" Tires    8.75 x 16.5E    LT 215/85R 16D Suspension — Front    Coil springs    Coil springs Suspension — Rear    Springs    Springs Rear axle ratio    3.73    4.10 Automotive battery (amp.-hr.)    50    50 Auxiliary battery (amp.-hr.)    90    90 Fuel capacity (gal.)    40    40 Fresh water capacity (gal. w/heater)    24    36 Holding tank capacity (gal.)    20    32 LP gas (lbs.) (STD/OPT)    28/80    28/80 Sleeping capacity Standard    4    6 Optional    6    NA GVWR (lbs.)    8,600    11,000 Wheelbase    133"    133"
 <p>SPECTRUM DH Spectrum offers an optional overhead side bunk.</p>		
 <p>SPECTRUM +2 DB</p>		
 <p>SPECTRUM +2 DH</p>		

**ITASCA. Get Serious.**

Itasca's continuing program of product improvement makes specifications, equipment, model availability and prices subject to change without notice. Some items shown may be extra cost options.

For Itasca sales & service, contact: