

1997

WARRIOR®

*It's easy to
build a motor home
that costs less. The
true test is making
it worth more.*



32RQ



We believe you should never have to choose between price and quality.

The truth is, just about anyone can build a Class A motor home that's affordable for first-time buyers. The trick is building one that doesn't make you feel like you're living in a Quonset™ hut, (or trying to drive one) like some motor homes. At Winnebago Industries we've become obsessed with making the Warrior a well-built, highly affordable Class A motor home.

Taking advantage. We have to admit, the Warrior has certain advantages from the start. Since we build all our vehicles in the same facility, you'll find many of the same construction features in a Warrior that you'll find on models like our Adventurer® and Vectra®—for example, our interlocking joint system, welded aluminum framework

and Thermo-Panel® sidewalls.

Good influences. A lot of upscale design features have rubbed off on the Warrior, too. This year there's a new, sleeker front end design. The smooth fiberglass skin has fresh new graphics. And the new Warrior has a one-piece fiberglass roof, something you'll now find on all our Class A motor

homes. This attention to detail carries over on the inside, too. For example, all upper cabinets and appliances are secured to metal plates in the sidewall and roof.

No compromise. If you're thinking of moving from a towable or Class C to a Class A motor home, the Warrior presents a unique opportunity to buy a new motor home without compromising comfort or quality.



32RQ. A Warrior gives first-timers more upscale features than they imagined possible, and more space in this 32-foot floorplan.

We're spotlighting some of the details that set us apart.

As part of our ongoing improvement policy, we put our motor homes in a dark room, turn on only the interior lights and check the effectiveness of each for reading, cooking, watching TV, etc. Using what we learn, we add and reposition lighting where possible.



Opticlear lenses were installed on the lights under cabinets to shed more light where you read and work.



Courtesy lights with conveniently placed wall switches softly light the way when you're up and around in the dark.





30RQ. Cross-stacked bunks combine sleeping space with storage space. There's access to additional storage beneath the lower bunk. This bedroom also features a lounge chair and fold-up table.



25RU. An overhead bunk provides extra sleeping space. Redesigned cab seats have lumbar support and larger armrests for added comfort.



32RQ. Pass-through storage gives you easy access from either side of the coach. Storage compartment steel is electrocoated to prevent corrosion.



30RQ. Cooking is easier with a new standard light and power fan on the range hood and a flip-up counter extension.



32RQ. This bathroom stays free of clutter thanks to a handy pullout laundry hamper and a recessed towel bar behind the door.



32RQ. A molded one-piece lower front cap and bumper enhance the fit and finish of the redesigned Warrior and contribute to its upscale look.



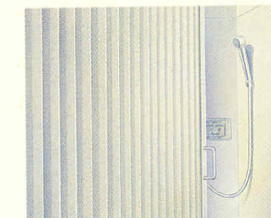
30RQ. This new Norcold model has controls conveniently placed between the refrigerator and freezer doors.



Seamless holding tanks are made in our own rotocast facilities. We fit them to specific spaces in the frame to improve balance and handling.



A recessed towel rack on the back of the bathroom door is just one of the space-efficient ideas you'll find in all our motor homes.



Pleated fabric shower doors are now standard in all models. They're treated for water resistance and easy to clean. And they're more sound absorbent so you can sing louder.



Our three-point seat belts connect directly to the seat frame in the cab and are bolted to the steel cab substructure. Always use your seat belt.



A third exterior brakelight is a safety feature other manufacturers only put on high-end models. We have one on all our motor homes.



Select appliances are secured with steel tie-downs, an exclusive Winnebago Industries safety feature. It's not something we're required to do. It just makes sense.

Some of its most impressive features are things

We developed Thermo-Panel® sidewall construction which combines light weight, structural integrity and durability.

Our smooth, one-piece fiberglass skin is strong, easy to clean and free of exposed fasteners.

To prevent leaks, windows are sealed with a non-hardening butyl sealant.

Seamless rotocast holding tanks make the best use of available space.

Our interlocking joint system connects the floor and walls to make a more durable, better-sealed body.

The sub-floor in this basement model is aluminum skin on foam. It's mounted on a steel frame, then secured directly to the steel chassis to provide an optimal balance of sound absorption and structural integrity.

Exterior compartment doors are laminated, with fiberglass skin on both sides of block foam insulation, for energy efficiency and sound absorption.

The fiberglass roof won't tear like rubber and comes with our standard 10-year limited parts and labor warranty, the only one in the industry.



We manufacture our own molded rear wheel wells which are non-corrosive and absorb sound better than metal.

Steel tie-downs that secure appliances are just one of our many safety features.

We laser-align the metal substructure and weld it directly to the chassis frame rails to form a square foundation.

you'll never see.



Every unit is pre-wired for an available roof air conditioner.

We look for materials that combine light weight and strength, like the welded aluminum framework. It's strong enough to pass a drop test, but it also increases fuel efficiency and weight-carrying capacity.

As an added safety feature, upper cabinets are secured to metal plates in the sidewalls and roof.

We fasten the sidewall to the floor frame and cab using steel brackets that make the sidewalls more stable on the chassis.

Safety glass windshield is mounted in steel, not wood or fiberglass, with non-hardening sealants for maximum strength.

Roof top caps are insulated to reduce condensation.

Block foam insulation increases R-value and decreases noise inside the coach.

We letter code our wiring every three inches to make service diagnosis easier and faster.

Computer simulated or physical drop testing, performed on the various models, is unique to Winnebago Industries. This testing aids in evaluating structural integrity, panels/panel joints, appliance attachments and window/door operations.

We conduct a final inspection of each unit to check all the dash functions, as well as the overall fit and finish.

A water test is conducted at the end of the assembly line to make sure each unit is watertight.

Not only will you find three-point shoulder and lap seat belts with retractors in the cab, lap belts are standard in selected areas of the coach as well.

The new one-piece molded front cap and bumper blends styling and function for a better fit and finish.

Welded tubular aluminum framework is strong yet lightweight.

To prevent corrosion, we electrocoat all steel in the storage compartments.

A computer evaluates every unit for wheel alignment and checks 75 chassis points to ensure proper handling.

Our locks are endurance and corrosion tested.



Why do people buy our motor homes? Is it our warranty? Our nationwide dealer network? Or is it those WIT Club caravans? Socializing is an important part of motorhoming. And we don't know a more fun bunch of people than our Winnebago-Itasca Travelers (WIT) Club.



There are more than 250 chapters across the U.S.A. and Canada. Many members enjoy attending rallies and traveling together in caravans. A highlight of every summer is the Grand National Rally when thousands of members meet at our campground in Forest City.

In addition to social activities, WIT Club members enjoy many special benefits like professional trip planning, mail forwarding and discounts.

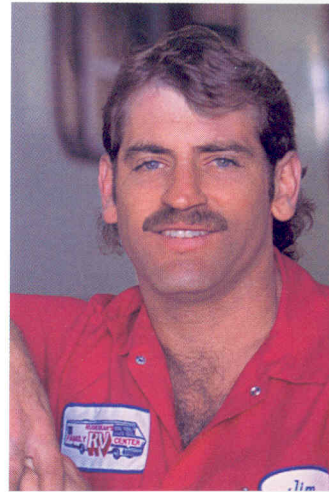
How well are our motor homes put together? Ask s

Since we come from a small town, we've always believed in the direct approach. When you want to find out something, go right to the source. And when you want to find out about a motor home, who better to ask than someone who works on them day in and day out?

Ask the service manager.

The service manager at your Winnebago Industries dealer has worked on a lot of different types of motor homes and is a wellspring of information. He'll be glad to share with you which motor homes are built the best. Which ones do service technicians find easiest to work on? (Remember, less labor means lower labor costs.) Which company has the most comprehensive warranty? And which motor homes would he recommend to a friend? We're confident Winnebago Industries is the name you'll hear most often.

Service training. Customers tell us the quality of dealer service has a big influence



*"The best hands-on training I've seen."
—Service Technician Jim Bithell, Russ
Dean's Family RV Center, Pasco, WA.*

on the owner's overall satisfaction with their motor home. To help keep that quality high, we conduct an ambitious training program in the field and at our Forest City plant. Throughout the year you'll find service technicians from all over the country attending week-long training sessions on such topics as 110-volt generator service, body repair and appliance service.

Parts availability. Of course, even an ace service technician's hands are tied if the parts he needs aren't available. So we've created an extensive warehousing and distribution system that carries parts for older models, too. According to our Parts Computer Network, 99.3% of our normal stock items are available whenever a dealer calls.

someone who takes them apart.

Warranty protection. We've always felt the best service policy is to keep the need for service to a minimum. That's why we build our motor homes better. And because we go the extra mile during manufacturing, we can back our motor homes with the strongest warranty in the industry. You could say our warranty starts where most others leave off. Because in addition to basic 12-month/15,000-mile coverage, we also have a 36-month/36,000-mile limited warranty on lamination. And our standard 10-year limited parts and labor warranty on the roof is exclusive in the industry.

Unlike most manufacturers, we also cover the appliances and equipment we install, so you can count on the convenience of one-stop service for warranty repairs. Expert service people are ready to help you at our many authorized dealers throughout the U.S. and Canada.

Preferred Care Program. Every new Winnebago Industries motor home comes with a one-year membership in our Preferred Care Program. This newly enhanced 24-hour nationwide assistance plan covers emergency dispatching for road service and towing, equipment service questions, service provider recommendations, service appointments and directions to service locations. Other free services include jump-starts, tire changing, fuel delivery and lockout assistance. A special



After the first year, membership in the Preferred Care Program can be extended by joining the WIT Club.

24-hour toll-free number connects you with a staff of experienced RV service professionals, backed by our network of more than 20,000 prequalified service providers.

The less you have to worry about, the more time you have for fun. And we'll do our best to give you a safe, enjoyable travel experience. At Winnebago, your peace of mind is worth the effort.



The Winnebago Motorsports Team puts racing fans on the inside track of the fastest growing sport in America. Members are invited to participate in special Pit Road Events, including driver autograph sessions, at selected NASCAR® Races throughout the season. Benefits also include a newsletter and special Motorsports merchandise.



At Winnebago Industries, we've been auto racing fans for years. We're the Official Motor Homes of NASCAR, and we're associated with several NHRA®



drag racing teams. If you'd like to join the

Winnebago Motorsports Team, just call us at 1-800-643-4892, ext. 2.

1997 Warrior Specifications

1997 WARRIOR	25RU	30RQ	32RQ
Length	25'4"	30'5"	32'0"
Wheelbase	158.5"	190"	208"
Fuel Capacity Chevrolet/Ford	40 gal./NA	78 gal./75 gal.	78 gal./75 gal.
Fresh Water Capacity w/Heater	60 gal.	66 gal.	66 gal.
Holding Tank Capacity Black/Gray	25 gal./25 gal.	50 gal./50 gal.	50 gal./50 gal.
LP Capacity	42 lbs.	80 lbs.	80 lbs.
Exterior Height w/Roof Air†	10'4"	11'4"	11'4"
Exterior Width	8'	8'	8'
Interior Height	6'5.7"	6'5.7"	6'5.7"
Interior Width	7'8"	7'8"	7'8"
Exterior Storage	14.1 cu. ft.	100.7 cu. ft.	106.9 cu. ft.
GVWR Chevrolet	12,300 lbs.	14,800 lbs.	14,800 lbs.
GVWR Chevrolet Optional (Mandatory for units registered in California)	14,800 lbs.		
GVWR Ford Optional		15,200 lbs.	17,000 lbs.

S Standard
O Optional

25RU
30RQ
32RQ

AUTOMOTIVE			
Chassis - Chevrolet 7.4L fuel-injected gasoline engine, automatic transmission w/overdrive & cooler, 630-CCA battery/105-amp. alternator	S	S	S
Chassis - Ford 7.5L engine, automatic transmission w/overdrive & cooler, 650-CCA battery/130-amp. alternator		O	O
Engine exchange - Chevrolet Vortec (L-29) 124-amp. alternator	O	O	O
Tires (radial)	S	S	S
Tire (spare)	S	S	S
DRIVER CONVENIENCES			
12-V electrical supply/lighter	S	S	S
Battery charge control - dual automatic	S	S	S
Beverage holders	S	S	S
Cab carpet	S	S	S
Cruise control	S	S	S
Curtain w/track - front wrap-around	S	S	S
Heating/air conditioning - blend air system	S	S	S
Hood release - exterior key locks	S	S	S
Mirrors (rear view)	S	S	S
Seats - hinged armrests, 3-point cab seat belts, swivel/slide pedestal, recline	S	S	S
Steering - power assisted w/tilt wheel	S	S	S
Sunvisors - w/map strap	S	S	S
Windows (driver & passenger) - sliding, w/screens	S	S	S

S Standard
O Optional

25RU
30RQ
32RQ

Windshield wipers (intermittent)	S	S	S
ENTERTAINMENT			
Antenna (radio) - roof-mounted, flexible rubber	S	S	S
Front TV (19" color) w/remotes* - includes storage w/doors on either side of TV	O	O	O
Speakers (4)	S	S	S
INTERIOR			
Bunk - front pull-down	O	O	O
Carpeting w/pad - selected areas	S	S	S
Ceiling lights	S	S	S
Ceiling vent - bathroom	S		
Ceiling vent - bedroom		S	S
Ceiling vent - galley	S	S	S
Ceiling vent - powered, bathroom		S	S
Color themes (interior) - choice of Blue Ridge, Painted Desert (teal)	S	S	S
Courtesy lights (2) - with switches	S	S	S
Day/night pleated blinds - galley window & entrance door NA	O	O	O
Decorative overhead door exchange - exchanges mirrored inserts	O	O	O
Divider curtain	S	S	S
Storage - front overhead shelf	S	S	S
Wardrobe - wooden clothes rod (drawers 25RU)	S	S	S
Windows - tinted	S	S	S

S Standard
O Optional

25RU
30RQ
32RQ

GALLEY			
Counter extension - flip-up	S	S	
Galley rail		S	S
Pantry			S
Range hood - w/light, vent & fan	S	S	S
Range top - 3 burner	S	S	S
Refrigerator/freezer - single door	S		
Refrigerator/freezer - double door	O	S	S
Sink (double) - stainless steel, w/countertop cover (2 covers - 30RQ & 32RQ)	S	S	S
Storage - below dinette seat	S	S	S
BEDROOM			
Bedsprad(s), pillow shams, pillows	S	S	S
Double bed - access to storage below w/prop rod	S	O	O
Twin beds - underbed storage (right side only) w/prop rod		O	O
Twin beds - cross-stacked w/storage below (lower bed)		O	O
Twin beds w/bunks - blanket shelf w/storage below		O	O
Twin beds w/overhead cabinet bunks - underbed storage (right side only) w/prop rod	O		
Queen bed - access to storage below w/prop rods		S	S
BATHROOM			
Hamper & bag		S	S
Lavatory cabinet	S	S	S
Medicine cabinet - mirrored door		S	S
Medicine cabinet - wood door	S		
Mirror - wall mount	S	S	S
Shower - flexible shower head	S		
Shower/tub - flexible shower head		S	S
Shower door - pleated, w/track	S	S	S
Sink - large oval, ledge back	S		
Sink - rectangular w/molded soap dishes		S	S
Tissue holder - surface mount	S	S	S
Toilet - marine style	S	S	S
Towel bar	S	S	S
Towel rack - recessed into bath door, 3 rods	S	S	S
EXTERIOR			
Awning rail	S	S	S
Entrance door lock - deadbolt	S	S	S
Entrance door step	S	S	S
Entrance door w/screen door	S	S	S
Graphics	S	S	S
Porch light - interior switch		S	S
Sewer hose storage area - in rear aluminum bumper	S	S	S
Storage compartments - locking doors	S	S	S
Tire tools - wrench, leverage bar	S	S	S

S Standard
O Optional

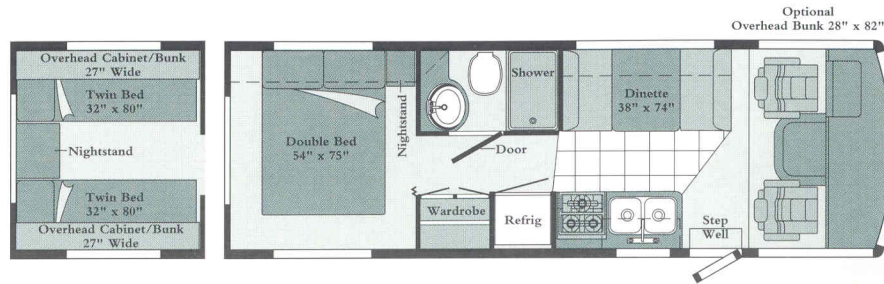
25RU
30RQ
32RQ

SYSTEMS			
Air conditioner* - roof, 13,500-BTU	O		
Air conditioners* - (2), roof, 13,500-BTU		O	O
Air conditioner* - roof, 14,800-BTU		O	O
Air conditioning wire path	S	S	S
Battery (auxiliary) - deep cycle	S	S	S
Battery disconnect system	S	S	S
City water hook-up	S	S	S
Electrical control center - automotive DC fuses, AC circuit breakers (100 & 110 VAC), 9-amp. battery charger/32-amp. converter (45-amp. converter 30RQ & 32RQ)	S	S	S
Furnace - electronic ignition, 19,000-BTU	S		
Furnace - electronic ignition, 30,000-BTU		S	S
Furnace ducting system - flexible, above floor	S	S	S
Generator - 4,000-watt	O	O	O
Generator - 5,000-watt		O	O
Generator - 6,500-watt		O	O
Generator fuel line	S	S	S
Holding tank compartment - heated		S	S
LP tank - permanent mount w/gauge	S	S	S
Monitor panel - water, holding & LP tank levels, battery condition gauge, water pump switch, water heater switch w/pilot indicator light, located in galley	S	S	S
Power cord - 30-amp.	S	S	S
Service center - heated, includes dump valves, 110V electrical cord & cable input		S	S
Water heater - 6-gal., electronic ignition	S	S	S
Water line - winterization valve	S	S	S
Water pump (demand)	S	S	S
SAFETY			
Assist handle - interior		S	S
Assist strap - interior	S	S	S
Carbon monoxide detector/alarm	S	S	S
Escape window	S	S	S
Fire extinguisher (10-B.C.)	S	S	S
Ground fault interrupter	S	S	S
High-mount brakelight	S	S	S
LPG leak detector/alarm	S	S	S
Smoke detector/alarm	S	S	S
3-point cab seat belts w/lap belts in selected areas	S	S	S
SPECIAL EQUIPMENT			
Preferred package - AM/FM radio w/cassette deck, microwave oven - touch control, flooring (vinyl - see floorplans), TV antenna (amplified), auxiliary start circuit, Class II trailer hitch, wheel covers, ladder. Big savings w/complete package when compared to purchasing separate options.	O	O	O

† The height of each model is based on the curb weight of a typically equipped unit on the standard chassis. The actual height of your vehicle may vary by as much as 2" depending on chassis or equipment variations.
NA Not Available. *Not all options available in combinations. See dealer for details.

Winnebago Industries' continuing program of product improvement makes specifications, equipment, model availability and prices subject to change without notice. Comparisons to other motor homes are based on the most recent information available.

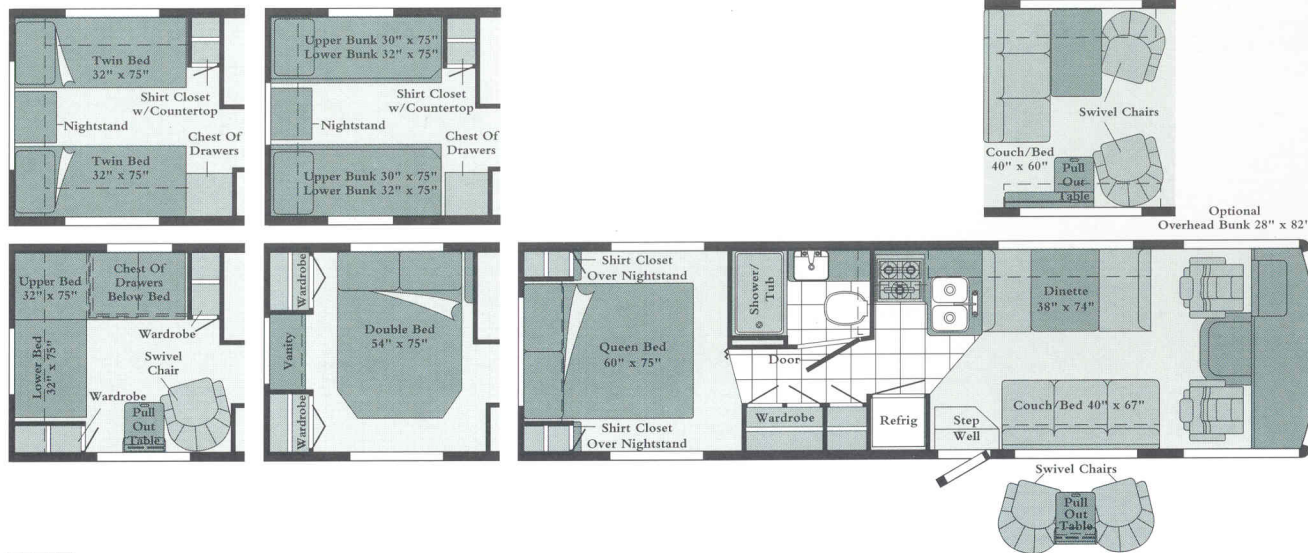
With more than 64 floorplan combinations, buyers can choose many of



25RU

The choice of a double bed or twin beds with overhead bunks makes this the perfect entry-level Class A for a couple or a family.

Length	25'4"
Exterior Width	8'
Interior Width	7'8"
Interior Height	6'5.7"



30RQ

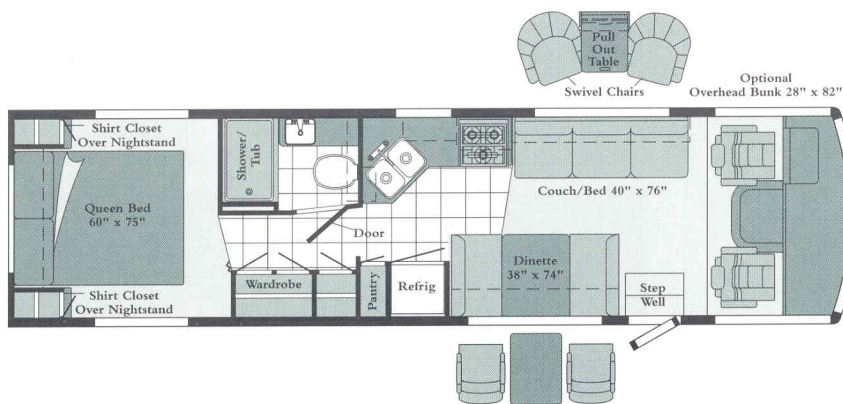
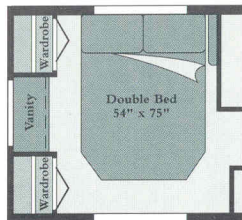
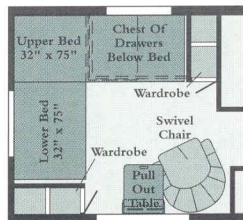
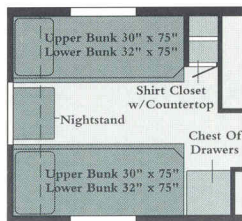
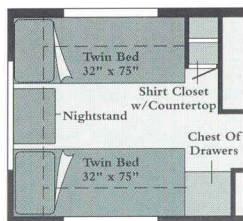
Popular options in this basement model include a forward-facing sofa and our innovative cross-stacked bunk beds.

Length	30'5"
Exterior Width	8'
Interior Width	7'8"
Interior Height	6'5.7"



Note: Dimensions shown are for sleeping space only and dashed lines denote overhead storage areas.

our most popular features.



32RQ

The range of bedroom and seating arrangements is large enough to suit most tastes, plus basement storage for things you can't bear to leave home.

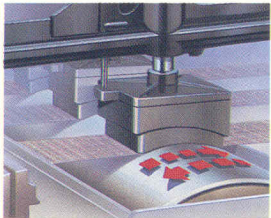
Length	32'0"
Exterior Width	8'
Interior Width	7'8"
Interior Height	6'5.7"



Our own Stitchcraft Division makes the seats, cushions and bedspreads that give our interiors a custom-designed look and feel.



The cabinet shop is responsible for cabinetry, doors and countertops. They use time-tested traditional methods like panel and rail construction.



A double rub test, which simulates getting in and out of a seat up to 30,000 times, is used to make sure our upholstery fabrics will stand up to years of wear.

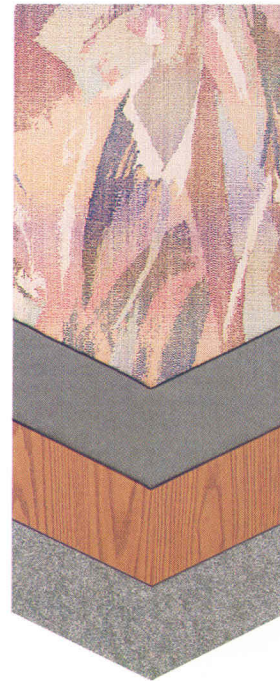
It's little things that make your motor home feel



Blue Ridge
with Waterford Oak



Painted Desert
with Waterford Oak



Note: Chair shown is for fabric representation only. This chair style is not available.

like home.

Other than bringing along your favorite knickknacks, how can you make a motor home actually feel like home? We start by considering dozens of details that add up to a concept we call Home Comfort Design.

By making most of our own furniture and cabinetry, we can have greater control over the fit and finish. And for fabrics and carpeting,

we specify only materials that surpass industry wear tests and are treated for stain resistance. Of course, you're welcome to add your own touches. We just want to provide surroundings you'll enjoy coming home to.



25RU

In addition to our two basement models, the Warrior is available in this 25-foot conventional version with a choice of bedroom configurations.



Winnebago Industries has been designated a Qualified Vehicle Modifier by Ford Motor Company. The QVM program promotes high standards for manufacturers who build motor homes on Ford chassis, and we are proud to be one of the first motor home manufacturers to qualify. Meeting QVM standards is a part of our policy of continuous quality improvement.

Winnebago Industries Commercial Vehicles



We build mobile clinics, police and fire command posts and many other hard-working vehicles. Units from 22 to 37 feet can be custom built for almost any application.

*Where your
motor home comes
from is just as
important as
where it takes you.*

Most manufacturers assemble motor homes in several locations. But ours are built in just one place: Forest City, Iowa. To understand how this helps us build better motor homes, you should know a little of our history. Winnebago Industries began in Forest City nearly 40 years ago.

Since that time, friends, neighbors and sometimes even two or three generations of the same family have worked side by side.

We've always had a special incentive to pay attention to the details and keep quality

high. Because around here, building motor homes isn't just a job. It's a way of life.

To learn more about our motor homes, we invite you to see one of our outstanding dealers. And to see how we

build motor homes, you're welcome to visit our headquarters. Call us at (515) 582-3535 for a free factory tour.



WINNEBAGO Built proudly by
WINNEBAGO

© 1996 Winnebago Industries, Inc. Forest City, IA 50436. Printed in USA.

Seat belts are your most important hookup. Always buckle up.