

1 9 9 8 S U N F L Y E R<sup>®</sup>



33WB



# Who would have thought the cutting

Introducing the 1998 Itasca Sunflyer, a brand new motor home filled with brand new ideas. Sunflyer features innovative widebody floorplan designs, exciting slide rooms, luxurious appointments, expansive storage areas and an extremely high level of engineering refinement. With its sleek exterior design, Sunflyer is one of the most eye-catching motor homes on the road. But what else would you expect from Itasca? The motor home company that's built a reputation by building cutting edge motor homes.



Four of our Sunflyer models include a unique couch/galley slideout. The slideout dramatically increases the floor space in both the living room and galley, and uses our revolutionary **STOREMORE™** Slideout System which overcomes the perception of having to sacrifice exterior and interior storage space to accommodate a slide room. With this innovative system, you won't find undersized or non-functional storage areas hiding behind our compartment doors. (Others install compartment doors that simply enhance aesthetics.) And there's no "step up" in front of the couch like you'll find on many slideout models.



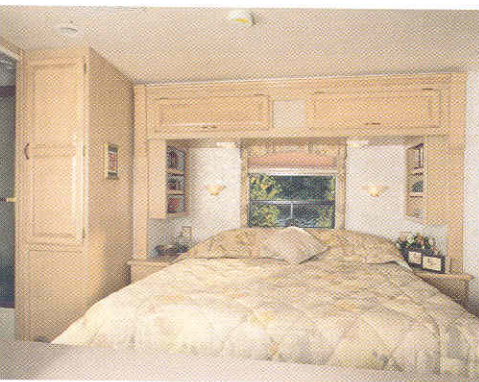


# edge could be so comfortable?



With five models and a host of floorplan and decor options to choose from, it is easy to find the interior that is right for you. Roof air conditioning is ducted through insulated paths and distributed through dampening, rotating ceiling vents making temperature control easy. Two Coleman high-efficiency air conditioners and the **POWERLINE™** Energy Management System ensure efficient air flow when utilizing 30-amp. service by monitoring the usage of 120-volt electrical power and redistributing the power as needed.

A microwave/convection oven, pantry, appliance garage, water purification system, double-door refrigerator/freezer and 3-burner range top are all standard.



The 34WY features two slideout rooms (a galley/couch slideout in the living area and a slideout in the bedroom). The added space afforded by the slideout design allows an abundance of storage space and unique bedroom features like a tip-out hamper, desk/vanity and dual wardrobes.



Luxury bedroom features include a comfortable Serta® mattress, rich, handcrafted woodwork, a mirrored full-length wardrobe and an available 13" color TV on a pull-out stand. The 35WH, shown here, features a unique side aisle entrance to the bedroom and a private bath entrance.

## SUNFLYER DECOR OPTIONS

All fabrics selected for use in the Sunflyer must pass a series of tests to ensure strength and durability. For instance, the double rub test mechanically simulates a person getting in and out of a seat up to 30,000 times to see how the fabrics wear.

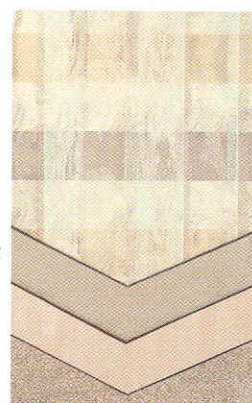
### VILLAGE GREEN

with Waterford Oak



### WILLOW

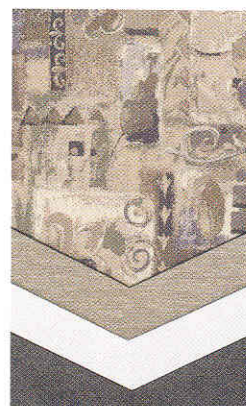
with Maple



Main  
Accent  
Wood  
Carpet

### OAKLEAF

with White Granite



Main  
Accent  
Wood  
Carpet

Waterford Oak is the standard woodgrain with all three Sunflyer interior decors. Maple is available with Willow and Village Green. White Granite is available with Oakleaf.

## EXTERIOR VALANCE PANELS

### SEA MIST



### CHAMPAGNE



Exterior lower valance colors are Sea Mist, suggested with Oakleaf; and Champagne, suggested with Willow and Village Green. However, you may order either valance color, regardless of your interior choice.



# Wall to wall strength.



Combine Sunflyer's exterior graphics and the choice of either Champagne or Sea Mist exterior valance panels with a high gloss exterior finish (available on some Sunflyer models) and the result is a motor home with a look all its own. The bedroom slideout, like the galley/living area slideout on the opposite side of the motor home, utilizes bulb and wipe seals to provide a weathertight environment when the room is extended or retracted. New heavy-duty gas chassis from Ford or Chevrolet allow for increased floorplan flexibility and enhanced GVWR — including the 34WY shown above.



The 36WL 'Pusher' takes Sunflyer's sleek design to the next level with a one-piece fiberglass front end that adds a stylish look to this impressive motor home. Like all Sunflyer models, the 36WL 'Pusher' includes an expansive windshield mounted in steel. Sunflyer's unique design, combined with the larger windshield, gives the driver a clear view of the road.



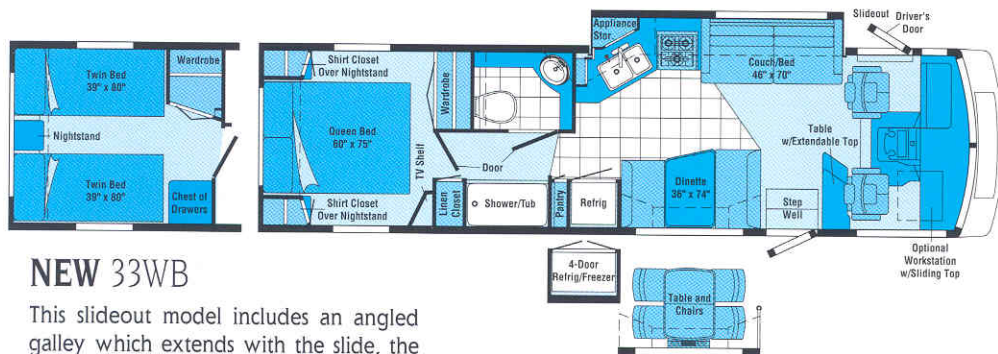
Sunflyer features full-size basement storage compartments with large openings — even under the slideout (thanks to our revolutionary **STOREMORE™** technology). All compartments are built using a new process with fewer seams, and feature insulated aluminum roll formed doors and carpeting. Heat is ducted to the fixed compartments.



Swivel holding tank drain valves, wash station, black water tank flush system, sewer hose and cover, telephone and cable TV inputs, and 90 degree fresh water fill with tank fill diverter valve are conveniently located in all service centers.



# 1998 Sunflyer Floorplans

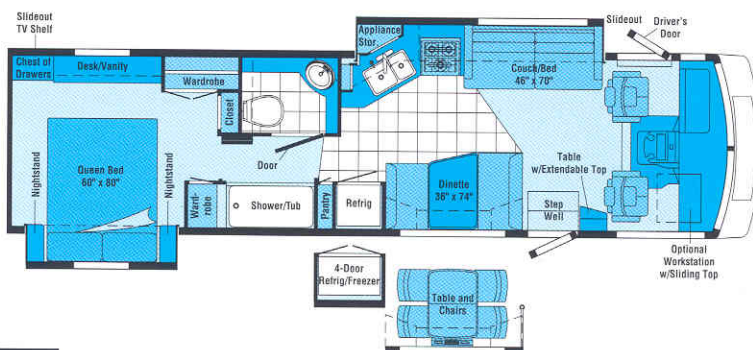
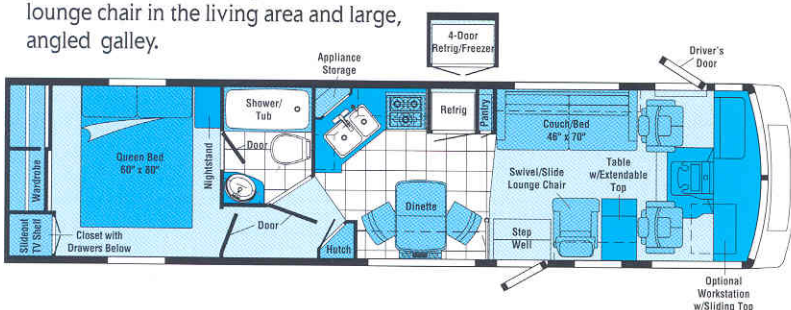


## NEW 33WB

This slideout model includes an angled galley which extends with the slide, the choice of a dinette or table and four chairs, and two available bedroom configurations.

## NEW 35WH

Greater bedroom and bathroom privacy is just one of the advantages of this spacious side aisle floorplan. Includes a lounge chair in the living area and large, angled galley.

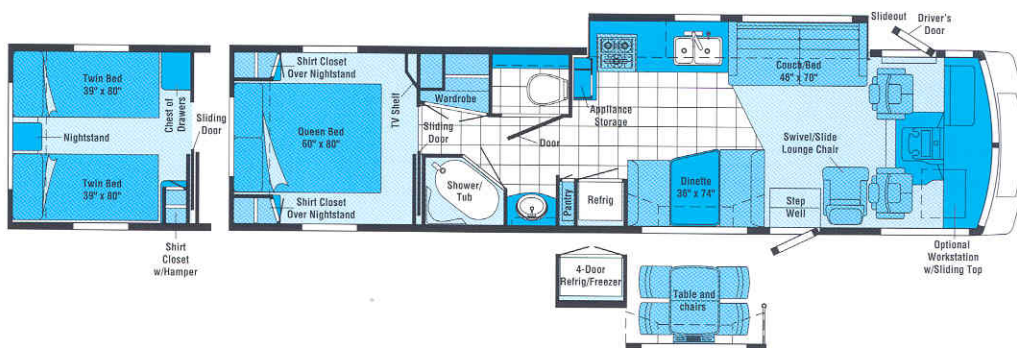


## NEW 34WY

Slideouts in both the bedroom and the galley/living area add a tremendous amount of living space to this exciting new model. Includes the choice of a dinette or table and chairs, and extras in the bedroom like a slideout, a TV shelf, a vanity/desk and exceptional storage space.

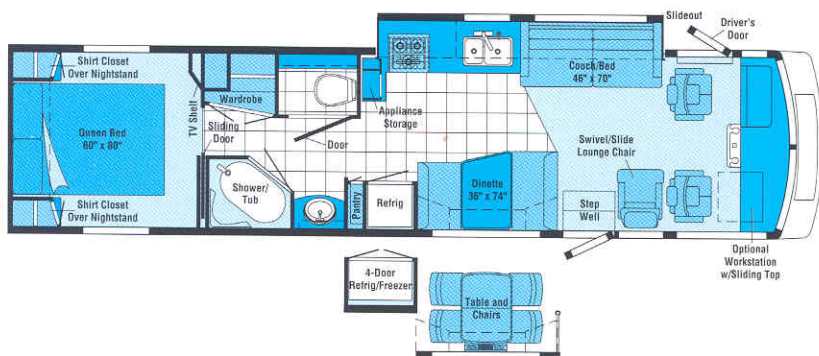
## NEW 36WL

Our largest Sunflyer makes the most use of its 36 feet with features like a slideout, the choice of a dinette or table and four chairs, and a luxurious shower/tub. Includes an available twin bed option.



## NEW 36WL Pusher

The 36WL 'Pusher' Sunflyer provides easier access to the driver/passenger area. Built on a rugged Freightliner diesel pusher chassis.



 Standard Vinyl Flooring

Note: The Interior Feature Group that is available on some models replaces the standard vinyl flooring in the bathroom with carpeting. With this package, all other standard vinyl flooring is replaced with a woodgrain vinyl floor covering.

Note: Dimensions shown are for sleeping space only and dashed lines denote overhead storage areas.



# 1998 Sunflyer Specifications

	33WB	34WY	35WH	36WL	36WL-P
<b>Length</b>	33'11"	34'8"	36'	36'1"	36'1"
<b>Exterior Width△</b>	8'5.5"	8'5.5"	8'5.5"	8'5.5"	8'5.5"
<b>Interior Height</b>	6'8"	6'8"	6'8"	6'8"	6'8"
<b>Interior Width</b>	8'5"	8'5"	8'5"	8'5"	8'5"
<b>Fuel Capacity (gal.) - Chev/Ford/Freightliner</b>	NA/75/NA	75/75/NA	75/75/NA	75/75/NA	NA/NA/90
<b>Fresh Water Capacity w/Heater*</b>	76 gal.	106 gal.	76 gal.	106 gal.	92 gal.
<b>Holding Tank Capacity - Black/Gray</b>	55/53 gal.	55/53 gal.	55/53 gal.	55/53 gal.	55/53 gal.
<b>LP Capacity◇</b>	28 gal.	28 gal.	28 gal.	28 gal.	39 gal.
<b>Wheelbase - Chev/Ford/Freightliner</b>	NA/216"/NA	219"/228"/NA	228"/228"/NA	233"/242"/NA	NA/NA/242"
<b>Exterior Height w/AC*</b>	11'9"	11'10"	12'	11'9"	12'2"
<b>Exterior Storage</b>	107 cu. ft.	112 cu. ft.	142.7 cu. ft.	135 cu. ft.	120 cu. ft.
<b>GVWR (lbs.) - Chev/Ford V-8/Freightliner</b>	NA/17,000/NA	21,000/NA/NA	16,500/17,000/NA	21,000/NA/NA	NA/NA/24,850
<b>GVWR (lbs.) - Ford V-10</b>	20,500	20,500	20,500	20,500	NA

AUTOMOTIVE	33WB	34WY	35WH	36WL	36WL-P
<b>Chassis - Chevrolet 7.4L Vortec V-8 @ 290-HP, 124-Amp. Alternator, Anti-Lock Brake System</b>			S		
<b>Chassis - Chevrolet 7.4L Vortec V-8 @ 265-HP, 145-Amp. Alternator, Anti-Lock Brake System</b>		O		O	
<b>Chassis - Ford 7.5L V-8 @ 245-HP, 130-Amp. Alternator</b>	S		O		
<b>Chassis - Ford 6.8L V-10 @ 275-HP, 130-Amp. Alternator, Anti-Lock Brake System (Available February/March 1998)</b>	S	S	O	S	
<b>Chassis - Freightliner Cummins B5.9L Turbo Diesel, Electronic @ 275-HP, Engine Block Heater, Exhaust Brake, 160-Amp. Alternator, Two (2) Chassis Batteries, Allison MD3060 6-Speed Transmission, Air Brakes, Air Suspension w/Electronic Air Dump</b>					S
<b>Shocks/Stabilizer Package - Front, Chevrolet</b>			O		
<b>Suspension (Air)* w/Park &amp; Level, Rear</b>			O		
<b>Tires (Radial) w/Spare (Spare NA on 34WY, 36WL, 36WL-P)</b>	S	S	S	S	S

DRIVER CONVENIENCES	33WB	34WY	35WH	36WL	36WL-P
<b>3-Point Retracting Seat Belts (Drv./Frt. Pass.) w/Adjustable 4-Position D-Loop, Seats w/Reclining High-Back Design, Hinged Armrests, Lumbar Support, Swivel/Slide Pedestal, Lap Belts in Selected Areas</b>	S	S	S	S	S
<b>12-V Electrical Supply/Lighter</b>	S	S	S	S	S
<b>Auxiliary 12-V Receptacle</b>	S	S	S	S	S
<b>Battery Charge Control Dual, Automatic</b>	S	S	S	S	S
<b>Battery Charger (Solar) Wiring Prep</b>	S	S	S	S	S
<b>Battery Charger (Solar) 10-Watt</b>	O	O	O	O	O
<b>Battery Disconnect System Coach</b>	S	S	S	S	S
<b>Cabinet Center Console</b>					S
<b>Convenience Tray</b>	S	S	S	S	
<b>Cruise Control, Steering Power Assisted w/Tilt Wheel</b>	S	S	S	S	S
<b>Defroster Fans Auxiliary 2-Speed</b>	O	O	O	O	O
<b>Driver's Door Roll-Down Window</b>	S	S	S	S	S
<b>Driver's Seat Six-Way Power Assist</b>	O	O	O	O	O
<b>Fog Lamps, Hood Release Exterior Key Locks</b>	S	S	S	S	S
<b>Heating/Air Conditioning Automotive Blend Air System</b>	S	S	S	S	S
<b>Leather Seats Drv. &amp; Pass., Leather Insert w/Vinyl Surr.</b>	O	O	O	O	O
<b>Map Light, Pleated Shade Front Wrap-Around w/Wands</b>	S	S	S	S	S
<b>Mirrors (Rear View) Ext., Low Mounted, Convex Element</b>	S	S	S	S	S
<b>Mirrors (Rear View) Ext., Low Mounted, Electric w/Remote &amp; Defrost</b>	O	O	O	O	O
<b>Rear View Monitor System Cable Ready</b>	S	S	S	S	S
<b>Rear View Monitor System Video/One-Way Audio</b>	O	O	O	O	O
<b>Rubber Floor Mats, Wall-Mount Map Pocket(s)</b>	S	S	S	S	S
<b>Service Light Driver's Side, Exterior</b>	S	S	S	S	S
<b>Start Circuit Auxiliary</b>	S	S	S	S	S
<b>Storage Cabinet (Front &amp; Side Overheads)</b>	S	S	S	S	S
<b>Sunvisors, Window Shades (2) Roller, Light Filtering</b>	S	S	S	S	S

	33WB	34WY	35WH	36WL	36WL-P
<b>Windshield Wipers (Intermittent)</b>	S	S	S	S	S
<b>Work Station Pull-Out, Dash Mounted, Passenger Side</b>	O	O	O	O	O

ENTERTAINMENT	33WB	34WY	35WH	36WL	36WL-P
<b>Antenna (Radio) Roof-Mounted, Flexible Rubber</b>	S	S	S	S	S
<b>C.B. Prep Kit Ant., Coax Wiring, 12-V Power Connection</b>	O	O	O	O	O
<b>CD Changer Multi-Disc w/Remote</b>	O	O	O	O	O
<b>Entertainment Center (Patio) DC Receptacle, 110-V Outlet, TV Jack, Radio Antenna, AM/FM Radio w/Cassette or CD Player, Speakers (2), Table, Locking Door</b>	O	O	O	O	O
<b>Inverter 130-Watt for TV/VCR</b>	O	O	O	O	O
<b>Rear Stereo System Bedroom</b>	O	O	O	O	O
<b>Satellite System Pre-Wiring Roof</b>	S	S	S	S	S
<b>Satellite System Digital-∞</b>	O	O	O	O	O
<b>Sound System Deluxe, Amplifier, 6 Speakers</b>	O	O	O	O	O
<b>Stereo Power Switch For Main or Auxiliary Battery Use</b>	S	S	S	S	S
<b>Stereo (Cab) AM/FM/Cassette Deck w/Speakers (4)</b>	S	S	S	S	S
<b>Stereo w/CD Player (Cab)* AM/FM w/Speakers (4)</b>	O	O	O	O	O
<b>Telephone Input</b>	S	S	S	S	S
<b>TV* (13" Color) w/Remote Located in Bedroom</b>	O	O	O	O	O
<b>TV, Front (19" Color) w/Remote Switching System</b>	S	S	S	S	S
<b>TV Enhancement Package Antenna (Amplified), DC Receptacles (2), Interior Jacks (2), Coax Wiring, Cable Input, Exterior Antenna Jack, TV Shelf or Stand</b>	S	S	S	S	S
<b>VCR w/Remote</b>	O	O	O	O	O

SLIDEOUT	33WB	34WY	35WH	36WL	36WL-P
<b>Slideout Room (Driver's Side)* Approx. 20" Extension, Exterior Storage Compartments Slideout w/Room</b>	S	S		S	S
<b>Slideout Room (Pass. Side, Bedroom)* Approx. 24" Ext.</b>		S			

INTERIOR	33WB	34WY	35WH	36WL	36WL-P
<b>Carpeting w/Pad Stain Resistant</b>	S	S	S	S	S
<b>Ceiling Lights Fluorescent, Recessed</b>	S	S	S	S	S
<b>Ceiling Vent Non-Powered, Galley</b>	S	S	S	S	S
<b>Ceiling Vent Powered Ventilator Fan, Galley</b>	O	O	O	O	O
<b>Ceiling Vent Powered, Bathroom</b>	S	S	S	S	S
<b>Clock Decorator Style</b>	S	S	S	S	S
<b>Color Themes (Interior) Village Green (Green), Willow (Taupe), Oakleaf (Brown)</b>	S	S	S	S	S
<b>Courtesy Lights (2) w/Wall Switches</b>	S	S	S	S	S
<b>Day/Nighter Pleated Blinds Lounge &amp; Dining Area</b>	O	O	O	O	O
<b>Interior Feature Group Woodgrain Vinyl Plank Floor Covering in Galley, Carpeting in Bath, Solid Surface Galley Countertop</b>		O		O	O
<b>Lamp(s)* Decorator Style, Wall-Mounted in Lounge</b>	S	S	S	S	S
<b>Picture* Framed</b>				S	S



	33WB	34WY	35WH	36WL	36WL-P
<b>Wardrobe</b> Mirrored Door(s), Carpeted Floor, Drawers (35WH), Light, Clothes Rod, Shelf	S	S	S	S	S
<b>Windows</b> Tinted	S	S	S	S	S
<b>Windows</b> Dual Glazed, Thermo-Insulated	O	O	O	O	O
<b>GALLEY</b>	33WB	34WY	35WH	36WL	36WL-P
<b>Appliance Storage Cabinet</b>	S	S	S	S	S
<b>Coffee Maker</b>	O	O	O	O	O
<b>Folding Chair (2 on 35WH)</b>	S	S	O	S	S
<b>Flooring (Vinyl)</b>	S	S	S	S	S
<b>Hutch</b>			S		
<b>Microwave/Convection Oven</b> Touch Control	S	S	S	S	S
<b>Pantry*</b> Slideout w/Adjustable Shelves, Locking	S	S	S	S	S
<b>Range Hood</b> Light, Powered Vent, Monitor	S	S	S	S	S
<b>Range Top</b> 3-Burners w/Storage Below, Range Cover	S	S	S	S	S
<b>Range w/Large Glass-Doored Oven</b> 3-Burners, Range Cover, w/Drawer Below	O	O	O	O	O
<b>Refrigerator/Freezer</b> Large, Double-Door	S	S	S	S	S
<b>Refrigerator/Freezer</b> Large, Double-Door w/Icemaker	O	O	O	O	O
<b>Refrigerator/Freezer*</b> Four-Door w/Icemaker	O	O	O	O	O
<b>Sink (Double)</b> Stainless Steel, Single Control Faucet, Countertop Covers, Tip-Out Utility Tray	S	S	S	S	S
<b>Spice Rack</b>	S	S			
<b>Storage Drawers</b> Below Dinette Seats	S	S		S	S
<b>Table &amp; Chairs (2)</b>			S		
<b>Table &amp; Chairs (4)</b>	O	O		O	O
<b>Water Purification System</b>	S	S	S	S	S
<b>BEDROOM</b>	33WB	34WY	35WH	36WL	36WL-P
<b>Bedsprad(s), Pillow Shams, Throw Pillow(s)</b>	S	S	S	S	S
<b>Lamp(s)</b> Decorator Style	S	S	S	S	S
<b>Mattress(es)</b> Innerspring w/Non-Slip Mat, Access to Storage Below	S	S	S	S	S
<b>Mirror</b> on Backwall		S			S
<b>Wainscoting w/Chair Rail*</b>	S	S	S	S	S
<b>BATHROOM</b>	33WB	34WY	35WH	36WL	36WL-P
<b>Clothes Rod</b> Removable	S	S	S		
<b>Flooring (Vinyl)</b>	S	S	S	S	S
<b>Lavatory Cabinet, Makeup Lights (3)</b>	S	S	S	S	S
<b>Linen Cabinet*</b>	S			S	S
<b>Magazine Rack</b>	S	S		S	S
<b>Medicine Cabinet</b>	S	S	S	S	S
<b>Mirror(s)</b> Wall-Mounted	S	S		S	S
<b>Shower/Tub</b> Shower Head	S	S	S	S	S
<b>Shower Door</b> Pleated (Glass on 34WY, 36WL, 36WL-P)	S	S	S	S	S
<b>Sink Oval, w/Ledge Back</b>	S	S	S	S	S
<b>Skylight &amp; Shower Light</b>	S	S	S	S	S
<b>Toilet w/Sprayer &amp; Foot Pedal</b> Porcelain, Tissue Holder	S	S	S	S	S
<b>Towel Bar, Towel Rack</b> 3 Rods, Built into Bath Door	S	S	S	S	S
<b>Towel Ring</b>			S	S	S
<b>EXTERIOR</b>	33WB	34WY	35WH	36WL	36WL-P
<b>Awning Rail</b>	S	S	S	S	S
<b>Awning* Patio</b>	O	O	O	O	O
<b>Bumpers</b> Front: Molded into Front Cap, Rear: Steel Reinforced Styled Fascia	S	S	S	S	S
<b>Entrance Door w/Screen Door</b> Latch & Deadbolt Locks, Electric Steps w/Door Activated Switch	S	S	S	S	S
<b>High-Gloss Exterior</b> Fiberglass Skin (Available Dec. 1997)		S		S	S
<b>Holding Tanks</b> Heated Compartment, Sewer Hose	S	S	S	S	S
<b>Ladder, Mud Flaps</b> Rear	S	S	S	S	S
<b>Outlet</b> 110-V, Curbside, <b>Porch Light</b> w/Interior Switch	S	S	S	S	S
<b>Storage Compartments</b> Single Paddle Latch, Lights, Gas Struts, Locks	S	S	S	S	S
<b>Tire Tools</b> Wrench, Leverage Bar, Tire Hoist Rod	S	S	S	S	S
<b>Trailer Towing Package w/Hitch, Trailer Wiring Extension</b>	S	S	S	S	S

	33WB	34WY	35WH	36WL	36WL-P
<b>Trunk*</b>	S			S	
<b>Undercoating*</b>		O	O	O	O
<b>Wash Station</b> Pump Switch, <b>Water Fill Door</b> Lockable	S	S	S	S	S
<b>Wheel Liners</b> Stainless Steel	S	S	S	S	S
<b>Wheels</b> Stylized					O
<b>SYSTEMS</b>	33WB	34WY	35WH	36WL	36WL-P
<b>30-Amp. Power Supply, Batteries (2)</b> Deep Cycle RV	S	S	S	S	S
<b>50-Amp. Power Supply*</b>	O	O	O	O	O
<b>Air-Conditioning System</b> Ceiling Distribution	S	S	S	S	S
<b>Electrical Distribution System</b> Breaker Panels, Converter/Charger (45-Amp. 33WB & 34WY, 55-Amp. 35WH, 36WL & 36WL-P)	S	S	S	S	S
<b>Furnace</b> Ducted, Low Profile, 40,000-BTU	S	S	S	S	S
<b>Generator*</b> 5,000-Watt, Gas	S	S	S	S	
<b>Generator</b> 6,500-Watt, Gas	O		O		
<b>Generator</b> 6,500-Watt LP					S
<b>Generator</b> 7,000-Watt Gas		O		O	
<b>Generator*</b> 7,500-Watt Quiet Diesel					O
<b>Holding Tank Flushing System</b> Black Tank Only	S	S	S	S	S
<b>Hydraulic Leveling Jacks</b> Front & Rear	S	S	O	S	S
<b>LP Tank</b> Permanent Mount w/Gauge	S	S	S	S	S
<b>Monitor Panel</b> Water, Holding & LP Tank Levels, Battery Condition Gauge, Water Heater Ignition Switch w/Pilot Indicator Light, Water Pump Switch, Generator Hourmeter, Generator Start/Stop Switch, Located on Range Hood	S	S	S	S	S
<b>PowerLine Energy Management System</b>	S	S	S	S	S
<b>Rear Automotive Heater</b>	S	S	S	S	
<b>Service Center</b> Provides Access to Cable TV & Telephone Inputs, City Water Hook-Up/Tank Diverter Fill, Exterior Wash Station w/Pump Switch, Sewer Hose, Flushing Sys.	S	S	S	S	S
<b>Water Heater</b> 6-gal., Electronic Ignition	S	S	S	S	S
<b>Shoreline/Generator Automatic Changeover Switch</b>	S	S	S	S	S
<b>Water Heater Winterization By-Pass Valve</b>	S	S	S	S	S
<b>Water Pump (Demand)</b> Accumulator Tank	S	S	S	S	S
<b>Water System Winterizing System</b> Automatic	O	O	O	O	O
<b>Water System Winterizing Valve</b>	S	S	S	S	S

	33WB	34WY	35WH	36WL	36WL-P
<b>SAFETY</b>	33WB	34WY	35WH	36WL	36WL-P
<b>3-Point Retracting Seat Belts</b> (Drv./Frt. Pass.) w/4-Position Adjustable D-Loop	S	S	S	S	S
<b>Assist Handle*</b> Exterior	S	S	S	S	S
<b>Assist Strap &amp; Handle</b> Interior	S	S	S	S	S
<b>Carbon Monoxide Detector/Alarm, LP Leak Detector/Alarm, Smoke Detector/Alarm</b>	S	S	S	S	S
<b>Fire Extinguisher (10-B.C.)</b>	S	S	S	S	S
<b>Ground Fault Interrupter</b>	S	S	S	S	S
<b>High Mount Brake Light</b>	S	S	S	S	S
<b>Lap Belts</b> in Selected Areas	S	S	S	S	S
<b>Windshield</b> Laminated Safety Glass Mounted in Steel	S	S	S	S	S
<b>Window Escape</b>	S	S	S	S	S

Δ The Sunflyer features a widebody design - over 96". In making your purchase decision, you should be aware that some states restrict access on some or all state roads to 96" in body width. Before making your purchase decision, you should confirm the road usage laws in the states of interest to you.

\* Not all options available in combination. See dealer for details.

◇ Capacities shown are tank manufacturer's listed water capacity (W.C.). Actual filled LP capacity is 80% of listing due to safety shut-off required on tank.

• The height of each model is based on the curb weight of a typically equipped unit on the standard chassis. The actual height of your vehicle may vary by as much as 2" depending on chassis or equipment variations.

∞ TV satellite system options do not include programming activation or receiver. Quality reception is only available in the lower 48 states.

S Standard

O Optional

NA Not Available

Winnebago Industries' continuing program of product improvement makes specifications, equipment, model availability and prices subject to change without notice. Comparisons to other motor homes are based on the most recent information available.



# A Few More Details.



## 1998 SUNFLYER.

### IT'S A FEATURE PRESENTATION.

- Select appliances are secured with steel tie-downs, an exclusive Winnebago Industries safety feature. It's not something we're required to do. It just makes sense.
- Sunflyer truly is a versatile vehicle. One example of this is the 3 1/4" thick roof, which has an R factor of 14.62. The roof's one-piece fiberglass outer skin adds structural integrity, doesn't expand and contract like rubber membranes, and is far more durable. This design is so strong, it's backed by a 10-year parts and labor limited warranty.
- To maintain the highest quality, Winnebago Industries manufactures more than 80% of the components found in the Sunflyer. All components which aren't manufactured by Winnebago Industries must pass a series of stringent quality control tests before being specified for use in a Sunflyer.
- Safety features include large high-mount mirrors, fog lights, pantograph windshield wipers, high-mounted recessed tail lights, center brake light, and adjustable shoulder harnesses.
- Superior warranty coverage:
  - Transferable 12 month/15,000 mile limited warranty.
  - 36 month/36,000 mile Customer First limited warranty.
  - 1 year toll-free road assistance through Preferred Care.
  - 10 year roof material limited warranty – parts and labor.

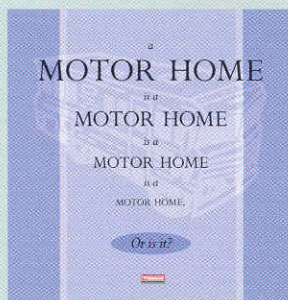
Winnebago Industries has been designated a "Qualified Vehicle Modifier" by Ford Motor Company.



The QVM program promotes high standards for manufacturers who build motor homes on Ford chassis, and we are proud to be one of the first motor home manufacturers to qualify. Meeting QVM standards is a part of our policy of continuous quality improvement.

## CONSIDER IT AN ADVANCED EDUCATION IN MOTOR HOMES.

There's much more to buying a motor home than simply finding one with comfortable furniture and inviting interior fabrics (although those things are important). In fact, we recommend people spend as much time examining the motor home's "unseen" features as they do looking over the interior appointments. For instance, there's a great deal you can learn about how well a motor home is constructed by simply looking inside the storage compartments.



To help make your buying decision easier, we've put together a new user-friendly guide which lists the most important things you should be looking for in a

motor home, no matter what make or model it is. "The Guide" also highlights the importance of meeting (and exceeding) industry standards, explains Winnebago Industries' one-of-a-kind construction process and details our industry-leading warranty and care programs. So ask for "The Guide" the next time you visit your Winnebago Industries dealer. This "advanced education" will definitely pay off down the road.

*For Sales and Service Information Contact:*



©1998 Winnebago Industries, Inc.

Printed in USA

We're on the Web at: [www.winnebagoind.com](http://www.winnebagoind.com)

Seat belts are your most important hookup. Always buckle up.