

Minnie Winnie®

2000 WINNEBAGO®



Class A comfort with Class C convenience.

Take a good look at our widebody Minnie Winnie® lineup and you'll quickly discover the kind of space and comfort you'd only expect to find in a Class A motor home. New for this year is an innovative crowned roof featuring a rounded exterior to better shed water and a flat underside for better cabinet attachment and more storage. And one-piece fiberglass construction makes it more durable than "rubber" roofs. Other features include ceiling-ducted air conditioning with wall-mounted thermostat, and ample basement storage. So take a closer look at the Minnie Winnie. We're confident you'll be rather impressed by what you see.



31A-DL in Ivory Coast The available front bunk with 19" TV and VCR is satellite system ready so you'll never be far away from your favorite shows. The cab-over sleeping area makes ideal use of extra space with a comfortable pull-out mattress.



30V-DL in Aegean There's plenty of space in this floor-plan, which features a slideout couch and L-shaped galley with a flip-up counter top extension and appliance garage, along with a roomy dinette.



31A-DL in Ivory Coast You'll feel right at home preparing meals in this convenient, angled galley that includes a stainless steel sink, pull-out pantry, coffee maker, Magic Chef® range and upgraded cherry wood cabinetry.



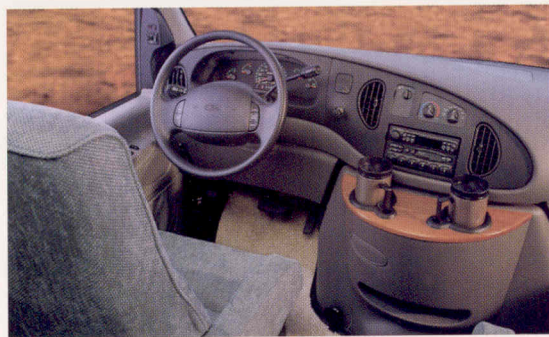
29U The bathroom of the 29U features a shower with folding door and a large tub in case you want to soak for a while.

29U in Aegean A unique forward-facing couch results in an open-feeling interior that separates the lounge area from the spacious galley.



30V-DL in Aegean

The queen-size bed features a Serta® mattress. The wardrobe, shirt closet and nightstand provide convenient storage. A wall-mounted shelf will accommodate a 13" TV.



29U A built-in step makes it easier to move between the cab and coach. The cab features driver and passenger air bags. You'll also enjoy the comfort of front seat lumbar support, power windows and locks, and a convenience tray.



Our attention to detail will take you a long way in comfort.



31A-DL A pull-out pantry makes it easy to get to spices and canned goods and stores them safely away while on the move.



29U The dining table stores conveniently under the forward-facing couch for travel.



29U Wide handles make it easier to open and close cabinet doors and drawers.



29U Large gear fits comfortably in the roomy pass-through basement storage area. Doors with single paddle latches open easily with one hand.



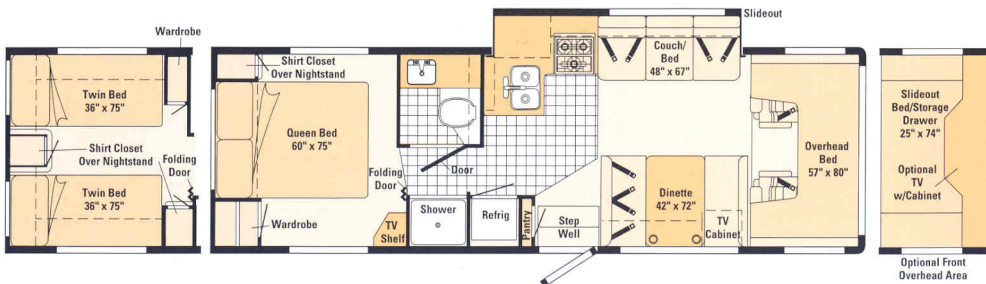
29U A new exterior entrance handle makes getting in and out of the Minnie Winnie easier. The exterior entertainment center features an AMIFM cassette radio, television hookup and removable table. Minnie Winnie's innovative gutter system channels water away from the awning to keep you dry.

One of these floorpla



29U

- Widebody basement design.
- Large shower/tub with new folding shower door.
- L-shaped galley with corner pantry.
- Several floorplan options.



30V

- Widebody basement design.
- Galley/couch slideout creates more space.
- Wardrobe and shirt closet storage in bedroom area.
- New textured glass shower door.



31A

- Widebody basement design.
- Roomy lounge, galley and bedroom areas.
- Large bathroom with new folding shower door.
- Pantry slides out for easy access.

UPGRADE YOUR EXCURSIONS.

Travel in first class with the DL upgrade package. This impressive lineup of features includes:

- Black enamel range with black glass-front oven
- Range hood with built-in monitor panel
- Fluorescent ceiling light in galley
- Upgraded stile and rail cherry wood cabinetry
- Valance paint
- Wheel liners—stainless steel
- Aluminum bumper with end wraps
- Fiberglass running boards
- Day/Night pleated shades
- Upgraded exterior assist handle
- Deluxe style cab seats
- Upgraded vinyl floorcovering



Standard Vinyl Flooring



Seat Belts

Note: Dimensions shown are for sleeping space only and dashed lines denote overhead storage areas.

has your getaway written all over it.



2000 MINNIE WINNIE SPECIFICATIONS		29U	30V	31A
Length		29'4"	30'2"	30'10"
Exterior Width†		8'3.9"	8'3.9"	8'3.9"
Interior Height		6'7"	6'7"	6'7"
Interior Width		8'	8'	8'
Fuel Capacity		55 gal.	55 gal.	55 gal.
Fresh Water Capacity w/Heater		37 gal.	41 gal.	37 gal.
Holding Tank Capacity - Black/Gray		34/31 gal.	35/38 gal.	34/31 gal.
LP Capacity◇		18 gal.	18 gal.	18 gal.
Wheelbase		190"	205"	205"
Exterior Height w/Roof Air‡		11'5"	11'5"	11'5"
Exterior Storage (Std.)		83.6 cu. ft.	77.7 cu. ft.	96.9 cu. ft.
GVWR		14,050 lbs.	14,050 lbs.	14,050 lbs.

Optional	2	3	Optional
AUTOMOTIVE			
Chassis - Ford E450 6.8L Triton V-10 Engine, 130-Amp. Alternator, Aux. Transmission Cooler, Driver & Passenger Air Bags	S	S	S
Chassis - Ford E450 7.3L Turbo V-8 Power Stroke Diesel Engine, 130-Amp. Alternator, Engine Block Heater, Aux. Transmission Cooler, Driver & Passenger Air Bags	O		
Tires & Spare (Radial)	S	S	S
DL UPGRADE PACKAGE			
Deluxe Upgrade Package* Add - Radius Transition Panel, Additional Exterior Graphics, Throw Pillow, Armrests to Couch, Decorative Wall Picture, Exchange - Rear Bumper (Aluminum Bumper w/Wrapped Ends), Upgraded Wall Lamps, Adjustable Reading Lights, Black Galley Appliances, Deluxe Cab Seats (w/Driver's Adjustable Lumbar Support), Range Hood with Monitor Panel, Upgraded Vinyl Floor Covering, Fluorescent Galley Light, Upgraded Cabinetry (Cherry Woodgrain Only), Acrylic Exterior Assist Handle, Upgraded Dining Chair Style	O	O	O
DRIVER CONVENIENCES			
3-Point Retracting Seat Belts (Drv./Frt. Pass.) Seats w/Single Armrest, Recline, Slide Pedestal, Lumbar Support	S	S	S
Battery Charge Control Dual, Automatic	S	S	S
Beverage Holder Motor Cover	S	S	S
Beverage Holder/Convenience Tray Deluxe	O	O	O
Cab Carpet & Rubber Floor Mats	S	S	S
Cigarette Lighter/12-V Electrical Supply	S	S	S
Cruise Control Integrated into Steering Wheel	S	S	S
Divider Curtain Cab	S	S	S
Dome Light	S	S	S
Heating/Air Conditioning Automotive Blend Air System	S	S	S
Hood Release Interior	S	S	S
Mirrors (Exterior) Convex	S	S	S
Mirrors (Exterior) Electric Remote w/Defrost, Convex	O	O	O
Power Door Locks & Windows	S	S	S
Start Circuit Auxiliary	S	S	S
Steering Power Assisted w/Tilt Wheel	S	S	S
Sunvisors	S	S	S
Trim Panels Driver & Passenger Doors (Chassis Supplied) w/Map Pocket	S	S	S
Windshield Wipers (Intermittent)	S	S	S
ENTERTAINMENT			
Entertainment Center (Patio) AM/FM Radio, Cassette Deck, Speakers (2), DC Receptacle, 110-V Outlet, TV Jack, Radio Antenna, Removable TV Table, Locking Door	O	O	O
Overhead TV Storage* Roll-Up Tambour Door, TV Strap	S	S	S
Stereo (Cab) AM/FM Cassette Deck, Speakers (4), Factory Supplied	S	S	S
TV Enhancement Package* Antenna (Amplified), DC Receptacles (2), Int. Jacks (2), Coax Wiring, Cable Input, Bedroom TV Shelf or Stand	S	S	S
TV, Front (19" Color)* & VCR w/Remote Video Selection System, w/Slideout Single Bunk Bed	O	O	O
TV, Front (19" Color)* w/Remote Video Selection System, w/Slideout Single Bunk Bed	O	O	O
TV, Lounge (13" Color)* & VCR w/Remote, 12-Volt Slide/Swivel Shelf, Locking Safety Latch	O	O	O
Satellite System Pre-Wiring	S	S	S
Satellite System ∞ Without Receiver, Digital Elevation Sensor	O	O	O
SLIDEOUT			
Slideout Room (Driver's Side) Galley/Couch, Slideout Cover		S	
INTERIOR			
Bed (Front Overhead Bunk Mattress) Sliding Side Windows, Pleated Privacy Curtain, Side Storage Cabinets	S	S	S
Cabinet Doors Wood Stile & Rail Raised Panel on Upper Cabinets, Flat Panel on Lower Cabinets	S	S	S
Carpeting w/Pad Stain Resistant	S	S	S
Ceiling Lights w/Wall Switches	S	S	S
Ceiling Vent Powered, Bathroom	S	S	S
Ceiling Ventilator Fan* Powered, Front Bunk	O	O	O
Ceiling Vents* Non-Powered, Bedroom & Front Overhead Bunk*	S	S	S
Clock Decorative Style	S	S	S
Color Themes (Interior) Choice of Ivory Coast (Beige), Aegean (Blue), w/Waterford Oak Woodgrain	S	S	S
Color Themes (Interior) DL Upgrade Choice of Ivory Coast (Beige), Aegean (Blue), w/Choice of Waterford Oak or Salem Cherry Woodgrain	O	O	O
Courtesy Lights w/Wall Switches	S	S	S
Decorative Wall Lamp	S		
Ladder* Overhead Bunk	O	O	O
Wardrobe Carpeted Floor, Clothes Rod, Mirrored Door(s), (Shelf & Drawers on 31A)	S		S
Window Coverings Day/Night Pleated Shades, Lounge, Dinette & Bedroom	S	S	S

Vanity Cabinet			O
Wall Border Decorative	S	S	S
BATHROOM			
Clothes Rod Removable, Shower	S	S	S
Flooring (Vinyl)	S	S	S
Lavatory Cabinet	S	S	S
Linen Cabinet			S
Magazine Rack		S	
Medicine Cabinet Wood		S	
Medicine Cabinet Wood, Mirrored Doors	S		S
Mirror Wall-Mounted		S	
Shower Flexible Shower Head		S	
Shower/Tub Flexible Shower Head	S		S
Shower Door Folding	S		S
Shower Door Textured Glass		S	
Shower Light w/Wall Switch	S	S	S
Sink Rectangular, Molded Soap Dishes	S	S	S
Skylight	S	S	S
Toilet, Tissue Holder	S	S	S
Towel Bar		S	
Towel Rack Mounted on Bath Door	S	S	S
Towel Ring	S	S	
Water Pump Switch	S	S	S
EXTERIOR			
Awning* Patio, 14'	O	O	O
Awning Rail Both Sides	S	S	S
Bumper Rear: Aluminum Tube, Painted w/End Caps	S	S	S
Entrance Door Step (Electric)	S	S	S
Entrance Door w/Screen Door Deadbolt Lock	S	S	S
Graphics Package (Exterior) Choice of Medium Titanium (Recommended w/Aegean) or Plum Haze (Recommended w/Ivory Coast)	S	S	S
Holding Tank Compartment Heated	S	S	S
Ladder	S	S	S
Mud Flaps Rear	S	S	S
Outlet 110-V, Curbside	S	S	S
Porch Light Interior Switch	S	S	S
Power Cord 30-Amp.	S	S	S
Running Boards (Aluminum)	S	S	S
Running Boards (Fiberglass)	O	O	O
Service Center w/Cable TV Input, City Water Hookup, Drainage Valves, Exterior Wash Station w/Pump Switch, Power Cord	S	S	S
Sewer Hose w/Storage in Bumper (NA w/DL Upgrade Package)	S	S	S
Storage Compartments Locking Doors	S	S	S
Tire Tools Lug Wrench	S	S	S
Trailer Hitch	O	O	O
Trailer Wiring Extension	S	S	S
Transition Panels	S	S	S
Wheel Covers Stainless Steel	S	S	S
Wheel Liners* Stainless Steel	O	O	O
SYSTEMS			
2 Maintenance Free Batteries*	O	O	O
AC/DC Electrical Distribution System Load Center Combination, 45-Amp. Converter/Charger	S	S	S
Air Conditioner Roof, 14,800-BTU	S	S	S
Auxiliary Automotive Heater		O	
Auxiliary Automotive Heater & Water Heater (Motoraid)	O		O
Battery Deep Cycle	S	S	S
Battery Disconnect System	S	S	S
City Water Hookup	S	S	S
Furnace Ducted, Low Profile, 30,000-BTU, Suburban	S	S	S
Generator* (Onan*) 4,000-Watt, Hourmeter, 110-V Wiring, Switches, Gas	O	O	O
Generator* (Onan*) 3,600-Watt, Hourmeter, 110-V Wiring, Switches, LP, Fuel Line	O		
Generator Prep Kit* Gas Line, 12-V Wiring	S	S	S
Inverter* 110-V for TV/VCR, 130-Watt	O	O	O

Decorative Wall Lamp	S		
Ladder* Overhead Bunk	O	O	O
Wardrobe Carpeted Floor, Clothes Rod, Mirrored Door(s), (Shelf & Drawers on 31A)	S		S
Window Coverings Day/Night Pleated Shades, Lounge, Dinette & Bedroom	S	S	S
Windows Dual Glazed, Thermo-insulated	O	O	O
Windows Tinted, Coach, 62% Light Transmittal	S	S	S
GALLEY			
Appliance Storage Cabinet		S	
Coffee Maker	O	O	O
Counter Extension Flip-Up		S	
Flooring (Vinyl)	S	S	S
Folding Chairs* (2)			O
Galley Counter Top Rail	S		S
Glass Counter Top Partition w/Wood Trim		S	
Microwave Oven Touch Control	S	S	S
Pantry	S	S	S
Range Hood w/Light, Powered Vent	S	S	S
Range w/Oven (Magic Chef®) 3 Burners, Drawer below	S	S	S
Refrigerator/Freezer Double-Door, Flush Mounted, 110-V/LP	S	S	S
Sink (Double) Stainless Steel, Single Control Faucet, Recessed w/Counter Top Cover	S	S	S
Spice Rack	S		
Storage below Dinette Seats	S	S	S
Table & Chairs (2)* (Flexsteel® Chairs)			O
BEDROOM			
Bed (Double) Serta® Mattress			O
Bed (Queen) Serta® Mattress	S	S	S
Beds (Twin) Serta® Mattresses	O	O	O
Bedspring, Pillows, Pillow Shams	S	S	S
Underbed Storage Gas Spring Bed Lifts	S	S	S

Generator* (Onan®) 4,000-Watt, Hourmeter, 110-V Wiring, Switches, Gas	O	O	O
Generator* (Onan®) 3,600-Watt, Hourmeter, 110-V Wiring, Switches, LP, Fuel Line	O		
Generator Prep Kit* Gas Line, 12-V Wiring	S	S	S
Inverter* 110-V for TV/VCR, 130-Watt	O	O	O
LP Tank Permanent Mount w/Gauge	S	S	S
Monitor Panel Water, Holding & LP Tank Levels, Battery Condition Gauge, Water Pump Switch, Water Heater Ignition Switch w/Pilot Indicator Light, Located in Galley	S	S	S
Water Drain System through Floor, 1" Drain	S	S	S
Water Fill Door Lockable	S	S	S
Water Heater 6-Gal., Electronic Ignition	S	S	S
Water Heater Winterizing By-Pass Valve (Manual)	S	S	S
Water Pump (Demand)	S	S	S
Water System Winterizing Valve	S	S	S
SAFETY			
3-Point Cab Seat Belt	S	S	S
Air Bags	S	S	S
Assist Handle* Exterior	S	S	S
Assist Handle Interior, Wood		S	S
Assist Strap Interior	S	S	S
Carbon Monoxide Detector/Alarm	S	S	S
Escape Window	S	S	S
Fire Extinguisher (10-B.C.)	S	S	S
Ground Fault Interrupter	S	S	S
High Mount Rear Brake Light	S	S	S
LP Leak Detector/Alarm	S	S	S
Lap Belts in Selected Areas	S	S	S
Smoke Detector/Alarm	S	S	S
WARRANTY			
12-Month/15,000-Mile Basic Warranty, 36-Month/36,000-Mile Warranty on Structure,** 10-Year Limited Parts & Labor Warranty on Roof	S	S	S

The Minnie Winnie floorplans feature a widebody design—over 96" In making your purchase decision, you should be aware that some states restrict access on some or all state roads to 96" in body width. Before making your purchase decision, you should confirm the road usage laws in the states of interest to you.

Capacities shown are tank manufacturer's listed water capacity (W.C.). Actual filled LP capacity is 80% of listing due to overfilling prevention device on tank.

The height of each model is based on the curb weight of a typically equipped unit on the standard chassis. The actual height of your vehicle may vary by as much as 2" depending on chassis or equipment variations. *Not all items available in combination. See dealer for details.

TV satellite system options do not include programming activation. Quality reception is only available in the lower 48 states. **See your dealer for complete warranty documentation information.

Innebago Industries' continuing program of product improvement makes specifications, equipment, model availability and prices subject to change without notice. Comparisons to other motor homes are based on the most recent information available.

Not all motor homes are built the same, or supported the same.

When you purchase a Winnebago Minnie Winnie you benefit from unique advantages, beginning with some of the most comprehensive warranty programs in the industry. It includes a 12-month/15,000-mile basic protection plan, 36-month/36,000-mile warranty on the structure and a standard 10-year limited parts and labor warranty on the roof.

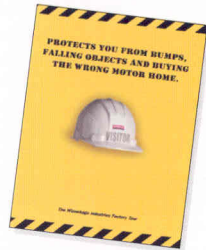


Mechanical emergency while on vacation? Go to your nearest Winnebago Industries dealer. TripSaver guarantees that qualifying, in-stock emergency warranty repair parts will be air-shipped from our factory within 24 hours. Plus, every new purchase comes with a one-year membership in our Premium Roadside Assistance Program, a 24-hour nationwide plan that covers road emergencies with free services like jump starts, tire changes, fuel delivery and lockout assistance.



In addition, Winnebago Industries vehicle owners are eligible to enroll in the Winnebago-Itasca Travelers (WIT) Club. As a member, you'll enjoy many benefits including mail forwarding, trip planning, rallies, caravans and more.

To learn more about what separates our motor homes from others, ask for this free guide next time you visit your Winnebago Industries dealer. It explains our superior manufacturing process. Use it to learn more about important safety and quality considerations as you shop for the motor home that's best for you.



Visit us at www.winnebagoind.com
Seat belts are your most important hookup. Always buckle up.

Interiors

Aegean
with Waterford Oak
or Salem Cherry
(DL only)



Ivory Coast
with Waterford Oak
or Salem Cherry
(DL only)



Exterior Valance Panels



Medium Titanium



Plum Haze

This year's exterior valance colors are Plum Haze, suggested with Ivory Coast; and Medium Titanium, suggested with Aegean. However, you may order either color, regardless of your interior color choice.



Our exclusive SuperStructure™ design provides strength and durability. An all-steel cab structure delivers maximum support while our unique interlocking joint design transfers the weight of the sidewall onto the metal substructure. And steel components are electroplated to resist rust and corrosion. It all adds up to the best-built motor home on the market.