

Spirit[®]
2002



For many RVers, the 2002 Itasca Spirit defines the standard for Class C motor homes. Beginning with Winnebago Industries' reputation for quality, value and innovation, Spirit offers a perfect combination of style and function with an impressive list of standard features and available amenities. With Spirit, you'll enjoy precision climate control with the ceiling-ducted roof air system, relax in the expanded living space provided by the StoreMore® Slideout System and take comfort knowing that Spirit's one-piece fiberglass roof provides better strength and durability than inferior rubber roofs.

Take a closer look at the 2002 Spirit and discover the Itasca difference for yourself. With a wide variety of floorplans to choose from, there's sure to be a Spirit that's perfect for you.



YOU'LL APPRECIATE THE REFINEMENTS and attention to detail found inside the Spirit. The beautiful cabinetry features stile-and-rail door construction complete with a catalyzed protective process (used on the doors and drawers) which provides a highly durable, luxurious satin finish typically found in exclusive home cabinetry. The **STOREMORE**® Slideout System, found on the 31T, creates an expansive interior with the added convenience of interior cabinets and exterior storage compartments that extend with the slideroom for easy access. Interior lights are well-placed, as are the large wall-mounted switches that control them. Choose your level of privacy with day/night pleated window treatments that feature both sheer and opaque shades.

INTERIOR DECORS

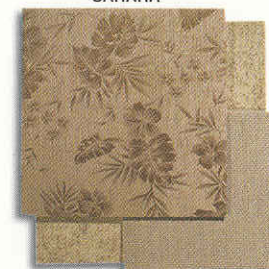
SPRING MIST



BAYWATER



SAHARA



PORTSMOUTH OAK
WOODGRAIN



Spirit
2002



THE 31T'S GALLEY IS COMPLETE with a built-in over-the-range microwave, a three-burner Magic Chef® range with oven and a double-bowl stainless steel sink. A sink cover and flip-up countertop extension provide additional workspace. Doors and drawers open easily with large handles while positive catches keep them secure when they are closed. The 31T floorplan places the available 19" TV and VCR in the galley area for comfortable viewing from either the dinette or couch.



NEW FOR 2002, a rear slider door is standard on the 29B to create an impressive bedroom area. Storage space is plentiful with deep overhead cabinets, an underbed storage area and large mirrored wardrobe. The built-in desk/vanity area doubles as a handy work space and includes a folding chair, and a flip-up mirror for even more storage.

WITH LAYOUTS DESIGNED TO MAXIMIZE SPACE, comfort and usability, the bathroom features full-size fixtures and amenities like a residential-height toilet with foot-pedal flush. Numerous cabinets provide ample storage and a removable clothes bar can be inserted in the shower to create additional hanging storage when traveling.



SIT BACK AND RELAX after a day of outdoor fun with the available 25" TV and VCR. Each Spirit is prewired for the available digital satellite system that can be added now or easily installed later. The available 130 watt inverter provides 110 volt AC power to the TV and VCR so you can enjoy them even when shoreline or generator power is not available. The flush-mounted monitor panel is conveniently located so you can easily check the status of onboard systems.



THE SPIRIT MAKES DRIVING EASY. The cab area features strategically positioned controls for driver convenience. Power windows and door locks are standard. The center console incorporates cupholders, a storage tray and a large tip-out storage compartment. The high-back cab seats are multi-adjustable, recline and feature fixed lumbar support. Choose the available UltraLeather HP™ seat covering for added comfort. Driver and passenger airbags are standard on the Ford® chassis.



KEEP INFORMED AND ENTERTAINED. Winnebago Industries engineers worked closely with the radio manufacturer to create the Winnebago RV Radio specifically for motor home applications. The RV Radio is a combination AM/FM stereo radio with a cassette and CD player along with a built-in weather band feature which provides immediate weather updates. The large control knobs and buttons are easy to operate.



Water runoff is no problem with a built-in rain gutter that drains water away from the door and windows.



Get a clear view with the low-mounted, extended-arm exterior mirrors. Upgrade to the available electric remote control and heated mirrors for added convenience.



Keep the mess outside. Rinse off sandy toys or muddy shoes before entering your Spirit with the available exterior wash station.



Tow with ease. The 3,500-pound towing capacity and 350-pound tongue weight hitch is standard.*



Extend your camping season. Available features like a heated holding tank, water heater bypass valve and dual-pane windows make it easy to use your motor home earlier and later in the season.



Enjoy your favorite music outdoors with the available entertainment center. It features an AM/FM stereo with cassette or CD, speakers, 12 volt DC receptacle, TV jack and a removable table.



Easy access to electrical and waste water connections make this service compartment so handy. The lower portion of this compartment is enclosed on select models for added convenience.



31T

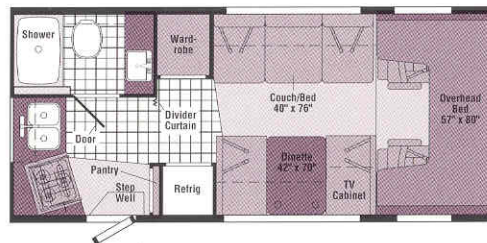
STOREMORE

THE SLIDEOUT SYSTEM, found on the Spirit 24F, 29B and 31T, uses the first electric powered slideout system to meet our stringent quality and performance standards. It features powerful, reliable dual-ram, dual-motor technology with electronic synchronization for improved room movement, better sealing and built-in diagnostics for easier service. StoreMore allows the large storage compartments that accommodate oversized and odd-shaped items to extend with the slideroom for easier access. The StoreMore Slideout System, found on the Spirit 31T, is a Winnebago Industries original design and is still the industry's premium slideout system.



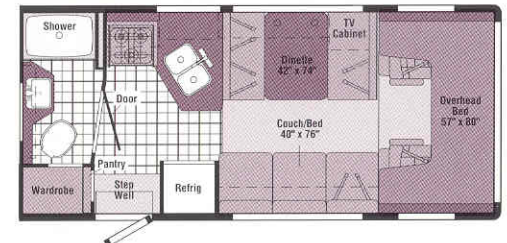
THE AVAILABLE 4,000 WATT ONAN® MICROQUIET™ GENERATOR can be added to supply power when a shoreline source is not available.

2002 SPIRIT FLOORPLANS



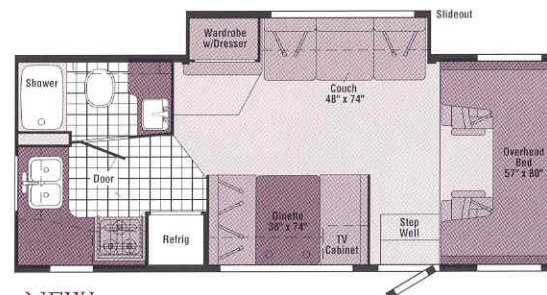
22E

- Convenient angled rear galley
- Rear corner bath
- Generous sleeping and seating accommodations



22R

- Roomy angled galley
- Large rear bath w/wardrobe
- Generous sleeping and seating accommodations



NEW

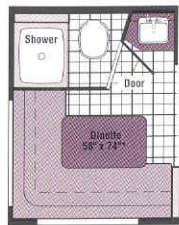
24F

- Large L-shaped rear galley
- Couch/wardrobe slideout
- Roomy wardrobe storage area
- Overhead bunk or available entertainment center w/25" TV



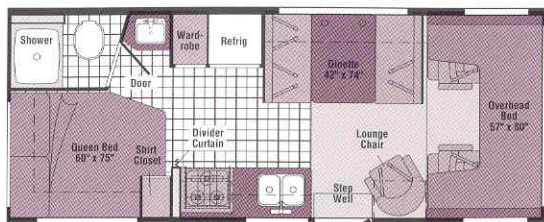
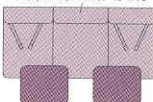
Optional Front Overhead Area

Optional TV w/Cabinet



*Not available as sleeping space in Canada

Couch/Bed w/2 Tables 40' x 76'

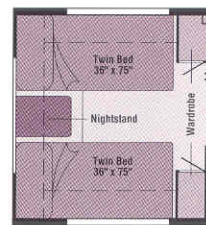


Optional TV w/Cabinet

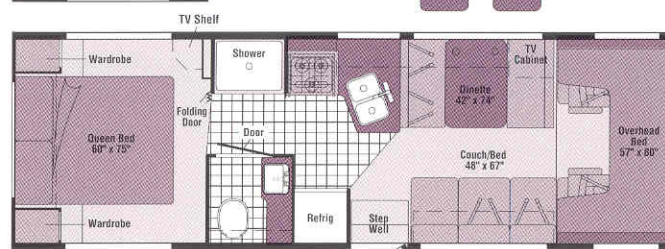
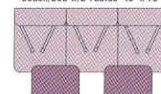
Optional Front Overhead Area

24V

- Private rear bath and bedroom area w/queen-size bed
- New swivel/glider lounge chair
- Available rear Lshaped dinette



Couch/Bed w/2 Tables 40' x 76'

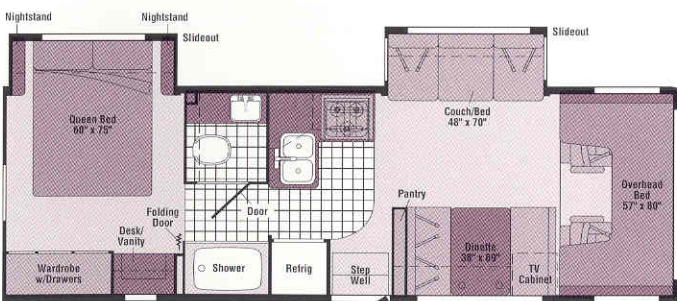


Optional TV w/Cabinet

Optional Front Overhead Area

29N

- Spacious angled galley
- Split bath design
- Available queen or twin beds



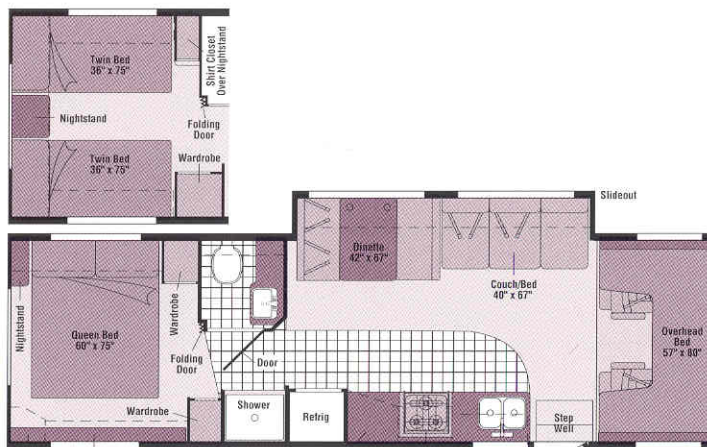
Optional TV w/Cabinet

Optional Front Overhead Area

NEW AVAILABLE DECEMBER 2001

29B

- Dual slideout floorplan
- Split bath design
- Large bedroom wardrobe w/drawers and a desk/vanity area
- Overhead bunk or available entertainment center w/25" TV



TV Shelf

Cabinet w/Storage

TV Cabinet Above Galley

Microwave Above Range

31T

- Couch/dinette **STOREMORE** Slideout System
- In-line galley area w/TV cabinet
- Available queen or twin beds
- Bedroom dual wardrobes and cabinet w/storage below

VINYL FLOORCOVERING SEAT BELTS

Note: Dimensions shown are for sleeping space only and dashed lines denote overhead storage areas.

THE PERFECT BLEND OF FUNCTION AND STYLE. The exterior of the Itasca Spirit not only looks sharp with the available awning and stainless steel wheel liners, it is also highly functional with aluminum running boards and tough, one-piece fiberglass sidewalls.



2002 SPIRIT SPECIFICATIONS

F = Ford, C = Chev	22E	22R	24F NEW	24V	29N	29B NEW	31T
Length - F/C	22'1"/22'6"	22'1"/22'6"	24'8"/25'	24'6"/24'11"	29'4"/NA	29'4"/NA	31'4"/NA
Exterior Height w/AC* - F/C	11'2"/11'3"	11'2"/11'3"	11'2"/11'4"	11'1"/11'3"	11'2"/NA	11'4"/NA	11'4"/NA
Exterior Width^	8'5.5"	8'5.5"	8'5.5"	8'5.5"	8'5.5"	8'5.5"	8'5.5"
Exterior Storage (cu. ft.)	11	12	36	27	61	50*	44
Interior Height	6'11"	6'11"	6'7"	6'11"	6'7"	6'7"	6'7"
Interior Width	8'	8'	8'	8'	8'	8'	8'
Fresh Water Cap. w/Heater* (gal.)	36	36	39	46	37	36*	37
Holding Tank Cap. - Black/Gray (gal.)	30/36	36/30	37/35	30/36	27/40	25*/31*	34/32
LP Cap. Δ (gal.)	12	12	12	12	12	12	18
Fuel Cap. - F/C (gal.)	37/35	37/35	55/55	55/55	55/NA	55/NA	55/NA
GCWR - F/C/F (lbs.)	18,500/17,000/NA	18,500/17,000/NA	18,500/17,000/20,000	18,500/17,000/NA	20,000/NA/20,000	20,000/NA/NA	20,000/NA/NA
GVWR - F/C/F (lbs.)	10,700/12,300/NA	10,700/12,300/NA	11,500/12,300/14,050	11,500/12,300/NA	14,050/NA/14,050	14,050/NA/NA	14,050/NA/NA
GAWR - Front, F/C/F (lbs.)	3,900/4,300/NA	3,900/4,300/NA	4,600/4,300/4,600	4,600/4,300/NA	4,600/NA/4,600	4,600/NA/NA	4,600/NA/NA
GAWR - Rear, F/C/F (lbs.)	7,500/8,600/NA	7,500/8,600/NA	8,350/8,600/9,450	8,350/8,600/NA	9,450/NA/9,450	9,450/NA/NA	9,450/NA/NA
Wheelbase - F/C	138"/139"	138"/139"	158"/159"	158"/159"	190"/NA	190"/NA	220"/NA

AUTOMOTIVE/CHASSIS

	22E	22R	24F	24V	29N	29B	31T
Chassis - Ford® E450 6.8L Super-Duty V-10 SOHC Triton® engine, 305 hp, automatic 4-speed overdrive transmission, 4-wheel anti-lock brakes, 130 amp alternator, dual airbags	\$	\$	\$	\$	\$	\$	\$
Chassis - Chevrolet® G3500 8.1L SFI Vortec® engine, 340 hp, 4L80-E transmission, 4-wheel anti-lock brakes, 124 amp alternator	0	0	0	0			
Chassis* - Ford® E450 7.3L Power Stroke® diesel engine, 215 hp, automatic 4-speed overdrive transmission, 4-wheel anti-lock brakes, 130 amp alternator, dual airbags		0		0			
Air Springs auxiliary Ride-Rite® rear				0	0	0	
Tire spare, Tire Tool wrench, Trailer Hitch* 3500# draw bar/350# maximum vertical, tongue weight & wiring, Wheel Covers stainless steel	\$	\$	\$	\$	\$	\$	\$
Wheel Liners stainless steel	0	0	0	0	0	0	0

CAB AREA & DRIVER CONVENIENCES

	22E	22R	24F	24V	29N	29B	31T
Beverage Holder, Cab Seats (fabric) w/3 point adjustable seat belts, armrest, lumbar support, multi-adjustable slide/recline, Cigarette Lighter/12 Volt Electrical Supply, Cruise Control, Curtain cab divider, Domelight, Floor Mats rubber driver & passenger, Hood Release, Power Door Locks & Windows, Steering Wheel tilt w/power assist, Sunvisors (2), Trim Panels driver & passenger doors (chassis supplied)	\$	\$	\$	\$	\$	\$	\$
Cab Seats UltraLeather HP™ seating surface	0	0	0	0	0	0	0
Glove Compartment Chevrolet® only	\$	\$	\$	\$			

ENTERTAINMENT

	22E	22R	24F	24V	29N	29B	31T
Satellite System Ready, TV Enhancement Package antenna (amplified), 12 volt powerpoint, interior jack(s), coax wiring, cable input (29N, 31T include bedroom TV shelf or stand*)	\$	\$	\$	\$	\$	\$	\$
RV-RADIO™ (Cab) AM/FM stereo cassette, CD & weather band, Ford®	\$	\$	\$	\$	\$	\$	\$

ENTERTAINMENT (CONT.)

	22E	22R	24F	24V	29N	29B	31T
Radio (Cab) AM/FM stereo cassette, roof-mounted, flexible rubber antenna, speakers (4), Chevrolet®	\$	\$	\$	\$			
Entertainment Center (Exterior) w/Cassette or CD Player DC receptacle, AC duplex receptacle, AM/FM radio, TV jack, radio antenna, removable table, speakers (2), lockable compartment	0	0	0	0	0	0	0
Satellite Dish Antenna Winegard®, RV digital, elevation sensing unit	0	0	0	0	0	0	0
TV 13" Color 12 Volt & VCP* w/remotes, front lounge/dinette area w/slide/swivel shelf	0	0	0	0	0	0	
TV 19" Color AC w/remote, video selection system, galley overhead cabinet*							0
TV 19" Color AC & VCR w/remotes, video selection system, galley overhead cabinet*							0
TV 25" Color AC w/remote, video selection system, single front overhead bunk			0	0	0	0	
VCR w/remote*			0	0	0	0	

INTERIOR

	22E	22R	24F	24V	29N	29B	31T
Bunk front overhead w/mattress, sliding side windows, privacy curtain, side storage cabinets, Ceiling textured fabric, Cupholder(s)*, Lights ceiling, incandescent w/wall switches, Roof Vent nonpowered, front overhead bunk, Shades pleated, day/night (lounge, dinette, bedroom), mini blinds (bath, galley)	\$	\$	\$	\$	\$	\$	\$
Bunk Ladder		\$					\$
Bunk Window* delete	0	0	0	0	0	0	0
Mirror lounge		\$					\$
Wardrobe Cabinet carpeted shelf, clothes rod, mirrored door	\$	\$	\$	\$			
Windows dual-pane/thermo-insulated	0	0	0	0	0	0	0

CABINETRY

	22E	22R	24F	24V	29N	29B	31T
Woodgrain Portsmouth Oak stile-and-rail construction w/raised panel inserts on upper doors	\$	\$	\$	\$	\$	\$	\$

COUNTERTOPS	22E	22R	24F	24V	29N	29B	31T
Laminate w/wood-look edge	S	S	S	S	S	S	S

FLOORCOVERING	22E	22R	24F	24V	29N	29B	31T
Carpeting w/pad, Vinyl bath & galley	S	S	S	S	S	S	S

FURNITURE	22E	22R	24F	24V	29N	29B	31T
Lounge Chair w/swivel & slide				S			
Couch	S	S	S	0	S	S	S
Dinette access to storage below	S	S	S	S	S	S	S
Dinette (Rear) L-shaped*				0			

GALLEY	22E	22R	24F	24V	29N	29B	31T
Faucet single-control, Microwave Oven , Range Hood w/light & fan, Range three-burner w/oven, Magic Chef®, Refrigerator/Freezer double-door, Norcold®, Sink double, stainless steel w/sink cover (countertop material), Wall Border	S	S	S	S	S	S	S
Galley Rail countertop material		S			S	S	
Pantry	S	S				S	
Spice Rack built into cabinet		S			S		

BATH	22E	22R	24F	24V	29N	29B	31T
Cabinet lavatory, Cabinet medicine, Faucet (lavatory) dual-control, Faucet (shower) dual-control w/flexible shower head, Mirror , Roof Vent power, Shower w/removable clothes rod, Shower Door folding, Sink rectangular, Tissue Holder , Toilet w/foot-pedal flush, Towel Rack 3-rod, mounted to door	S	S	S	S	S	S	S
Light shower	S	S	S		S	S	S
Skylight shower			S		S	S	S
Towel Bar	S	S	S	S	S	S	S
Towel Ring	S	S	S	S	S	S	S

BEDROOM	22E	22R	24F	24V	29N	29B	31T
Bed queen, Serta®				S			
Bed queen, Serta® w/underbed storage					S	S	S
Bed twin, Serta® w/underbed storage					0	0	
Bedsprad pillow shams				S	S	S	S
Desk/Vanity Cabinet w/flip-up countertop, wardrobe, drawers & folding chair						S	
Nightstand w/drawer(s)					S	S	
Roof Vent nonpowered					S	S	S

BEDROOM (CONT.)	22E	22R	24F	24V	29N	29B	31T
Shirt Closet				S			
Vanity countertop w/storage below						S	
Wardrobe Cabinet drawers				S	S	S	

EXTERIOR	22E	22R	24F	24V	29N	29B	31T
Awning Rails w/rain gutters, Door entrance w/separate screen door, deadbolt lock, Entrance Door Step single, manual, Ladder , Light porch light w/interior switch, Mirrors plate mount, manual adjust w/convex, Mudflaps rear, Receptacle AC duplex, Running Boards aluminum, Sidewall Skin one-piece smooth fiberglass, Storage Compartments valance panels, trunk liner	S	S	S	S	S	S	S
Awning* patio	0	0	0	0	0	0	0
Entrance Door Step single, electric w/doorjamb switch	0	0	0	0	0	0	0
Mirrors plate mount, electric remote w/defrost	0	0	0	0	0	0	0

SYSTEMS	22E	22R	24F	24V	29N	29B	31T
Auxiliary Start Circuit , Battery (Coach) deep cycle, Battery (Coach) disconnect system, Battery Charge Control automatic dual, Drain 1" water tank, Electrical Distribution System AC & DC breaker panels, 45 amp converter/charger, Generator Prep Kit , Monitor Panel wall-mount, battery condition gauge, generator hourmeter gauge,* generator start/stop switch,* holding tank levels, LP tank level, water heater light(s), water heater switch, water pump switch, water tank level, Power Cord 30 amp 25', Sewer Hose 10', stores in bumper, Tank LP, permanent mount w/gauge, Water Heater 6 gallon electronic ignition, LP gas, Water Heater Winterization Bypass Valve manual, Water Hookup city, Water Pump demand, Water System Winterizing Valve manual, Water Tank Fill w/locking door	S	S	S	S	S	S	S
Air Conditioner (Roof) 13,500 BTU, ceiling-ducted w/wall thermostat	S	S	S	S	S		
Air Conditioner (Roof) 14,800 BTU, ceiling-ducted w/wall thermostat						S	S
Batteries (Coach) (2)* deep cycle	0	0	0	0	0	0	0
Drainage System* heated, electric w/45 amp electronic converter, 1 heat pad per tank, pipe wraps & lighted on/off switch next to monitor panel	0	0	0	0	0	0	0
Furnace 25,000 BTU, low profile	S	S	S	S			
Furnace 30,000 BTU, low profile					S	S	S
Generator* 3,600 watt, Onan® MicroQuiet™ LP		0	0				
Generator* 4,000 watt, Onan® MicroQuiet™ gas	0	0	0	0	0	0	0
Inverter* DC/AC, 130 watt		0	0	0	0	0	0
Wash Station exterior, w/pump switch	0	0	0	0	0	0	0

SLIDEOUT	22E	22R	24F	24V	29N	29B	31T
Slideout Room couch/wardrobe w/slideroom cover		S					
Slideout Room bed w/slideroom cover, Slideout Room couch w/slideroom cover						S	
Slideout Room couch/dinette w/slideroom cover, STOREMORE™						S	

SAFETY	22E	22R	24F	24V	29N	29B	31T
Airbags driver & passenger, Ford®, Assist Handle exterior, Assist Strap interior, Bumpers front & rear, Detectors/Alarms LP leak, smoke, carbon monoxide, Fire Extinguisher 10 B.C., Ground Fault Interrupter , Light center high-mount stop lamp, Light(s) courtesy w/wall switch(es), Seat Belts cab, 3 point, Seat Belts lap (in selected areas)	S	S	S	S	S	S	S
Window escape				S	S	S	S

WARRANTY	22E	22R	24F	24V	29N	29B	31T
12-month/15,000-mile basic limited warranty , 36-month/36,000-mile warranty on structure,** 10-year limited parts & labor warranty on roof	S	S	S	S	S	S	S

- The height of each model is based on the curb weight of a typically equipped unit on the standard chassis. The actual height of your vehicle may vary by as much as 2" depending on chassis or equipment variations.
- Measurements are based on the most recent information available. See your dealer for updated specifications.
- Spirit floorplans feature a wide-body design — over 96". In making your purchase decision, you should be aware that some states restrict access on some or all state roads to 96" in body width. Before making your purchase decision, you should confirm the road usage laws in the states of interest to you.
- Not all items available in combination. See dealer for details.
- Capacities shown are tank manufacturer's listed water capacity (W.C.). Actual filled LP capacity is 80% of listing due to overfilling prevention device on tank.
- NA Not Available
- S Standard
- 0 Optional
- Actual towing capacity is dependent on your particular loading and towing circumstances which includes GVWR, GAWR and GCWR as well as adequate trailer brakes. Please refer to your vehicle's operator's manual for further towing information.
- ** See your dealer for complete warranty documentation information.

Winnebago Industries' continuing program of product improvement makes specifications, equipment, model availability and prices subject to change without notice. Comparisons to other motor homes are based on the most recent information available.

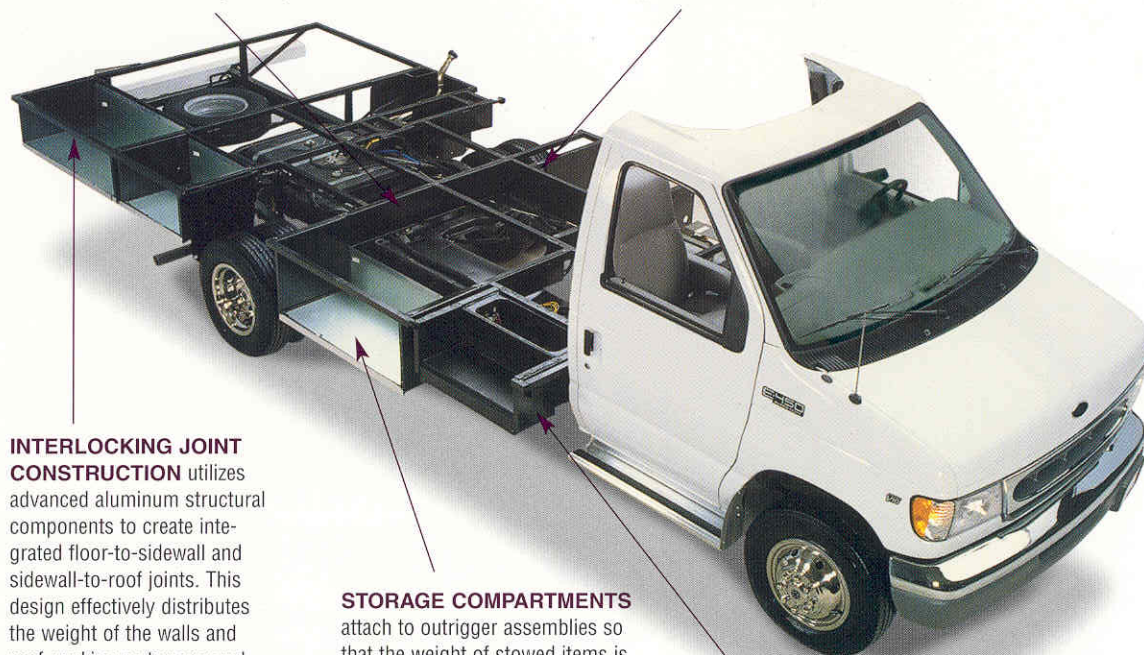
NOT ALL MOTOR HOMES ARE CREATED EQUAL, and as you take a closer look, you'll see that there is much more to an Itasca Spirit than a long list of standard features and compelling floorplans. Beneath it all, you'll find a SuperStructure foundation of strength and durability.



is the term given to Winnebago Industries' structural motor home design and construction. Rather than a single component, it is the culmination of design integration that incorporates steel and aluminum substructures, composite design laminated floor risers, interlocking joint technology and Thermo-Panel® floor, roof and sidewalls to form a high-strength, durable vehicle body.

LAMINATED RISERS feature a welded aluminum core for superior strength and provide a stable base for the floor structure and storage compartments.

THE FOUNDATION SUBSTRUCTURE assembly is precision-aligned to maximize longitudinal and cross-coach support as well as strength and durability.



INTERLOCKING JOINT CONSTRUCTION utilizes advanced aluminum structural components to create integrated floor-to-sidewall and sidewall-to-roof joints. This design effectively distributes the weight of the walls and roof, making a stronger and more durable body than competitor designs which rely on screws to carry the weight.

STORAGE COMPARTMENTS attach to outrigger assemblies so that the weight of stowed items is carried and dispersed throughout the foundation substructure.

CRITICAL STEEL COMPONENTS are treated using an advanced electrodeposition coating process that provides superior corrosion protection.

COMMITTED TO SERVICE. We back our motor homes with the best service after the sale in the industry.



Emergency-Shipped Parts

- 12-month/15,000-mile basic limited warranty
- 36-month/36,000-mile warranty on structure
- Standard 10-year limited parts and labor roof warranty
- Complimentary 24-hour roadside assistance program
- TripSaver emergency warranty parts shipments
- National dealer service network



RECOGNIZED QUALITY. Recreation Vehicle Dealer Association members annually rate RV manufacturers on the quality of their products, and sales and service support. Winnebago Industries has achieved the coveted Quality Circle award every year since its inception, the only major motor home manufacturer to do so.



ALL MOTOR HOMES ARE NOT CREATED EQUAL. Learn more about what sets Winnebago Industries apart. Ask your dealer for this guide. It will help you learn what makes Winnebago Industries motor homes distinctly superior to other brands.

WARNING: JOINING WIT HAS BEEN KNOWN TO CAUSE EXCESSIVE FUN. Winnebago-Itasca Travelers (WIT) is a club for owners of Winnebago Industries motor homes. WIT is a great way to meet people and offers you:



- Caravans and rallies
- Local and state group activities
- Benefits for RVers

www.winnebagoind.com

For Sales and Service Information Contact:

1-YEAR OLD ITASCA FIBERGLASS ROOF



1-YEAR OLD COMPETITOR'S RUBBER ROOF



BUILT TO A HIGHER STANDARD. Spirit features a crowned, one-piece fiberglass roof backed with a 10-year limited parts and labor warranty. Fiberglass offers superior strength, attractiveness and durability over rubber roofs found on many competitive models. Over time, rubber roofs are susceptible to chalking, streaking and degradation, and have less puncture and tear resistance than fiberglass.



©2001 Winnebago Industries, Inc.



Printed in USA

Seat belts are your most important hookup. Always buckle up.