

Sundancer[®]

2002



Step into a 2002 Itasca Sundancer and experience the kinds of amenities and spaciousness normally reserved for much larger, Class A motor homes. A long list of standard and available features is just the start — ceiling-ducted air conditioning, dual slide-rooms on two models, available dual-pane windows, beautiful cabinetry, premium furniture along with abundant and well-designed storage. Sundancer's Class C configuration provides automotive-like handling for added confidence behind the wheel.

Experience the 2002 Itasca Sundancer and discover the motor home that's perfect for you.



27P ASPEN GLEN w/ WASHED MAPLE

YOU'LL NOTICE A DIFFERENCE when you first step into a Sundancer. There's an attention to detail in both the design and finish that you just won't find in competitive models. Extend the **STOREMORE** Slideout System at the touch of a button to dramatically expand your interior living space. StoreMore features interior and exterior storage compartments that move with the slideroom for easy access and is standard on the front slideout room on the 27P and 31C models. The versatile interior cabinetry is precision crafted, and the doors and drawers are protected by a catalyzed finishing process, providing a highly durable, luxurious satin finish typically found only in exclusive home cabinetry. Once inside, you can sit back and relax as the custom Stitchcraft furniture surrounds you in comfort. Factor in the precision climate control provided by ceiling-ducted air conditioning and you may never want to leave. A/C is controlled via a convenient wall-mounted thermostat and is distributed through ceiling vents that are adjustable for both direction and airflow. For added thermal efficiency, dual-pane windows are available. Upscale day/night pleated window treatments feature both sheer and opaque shades so you can choose your level of privacy.

INTERIOR DECORS

TIMBER LANE



ASPEN GLEN



WASHED MAPLE
WOODGRAIN



SALEM CHERRY
WOODGRAIN



Sundancer
2002



27P

PREPARING A SNACK OR A FULL COURSE MEAL is not a problem with this full-featured galley. The three-burner Magic Chef® range with oven and a new over-the-range microwave provide cooking versatility. A flip-up countertop extension and sink cover offer expanded countertop space while fluorescent lighting ensures a well-lit area. Other user-friendly features include: doors and drawers with large handles and positive catches that open easily and stay secure when closed, a molded double-bowl sink that is sized to accommodate dishes and pans, an available water purification system featuring a separate faucet, and premium Congoleum® flooring that is durable and easy to clean.



THE FLUSH-MOUNTED MONITOR PANEL is conveniently located in the galley area so you can easily check the status of onboard systems.



27P

A SLIDEOUT PANTRY, standard on the 27P, offers easily accessible storage for canned and dry goods.



27P ASPEN GLEN

THE BEDROOM SLIDEOUT found on the 27P and 30V creates a spacious bedroom complete with a full-size wardrobe and chest of drawers. The desk/vanity area features a flip-up mirror and doubles as a convenient desk or workstation. The walk-around queen-size bed features a Serta® mattress for a good night's rest and even incorporates underbed storage.



31C

THE AVAILABLE REARVIEW MONITOR mounts neatly between the visors for improved visibility and includes a one-way audio feature for convenient backing and maneuvering.



A VARIETY OF ENTERTAINMENT FEATURES are at your fingertips. Catch the big game or your favorite show on the available 25" or 27" TV with the deluxe entertainment package that includes the superb sound quality of QSURROUND™ sound. Enjoy the TV and VCR even when shoreline or generator power is not available when you select the available 130 watt inverter. No detail is overlooked — even the interior lighting is strategically positioned to provide proper illumination and is controlled by large, wall-mounted switches.



RV Radio is a combination AM/FM stereo radio with a cassette and CD player along with a built-in weather band feature which provides immediate weather updates. The large control knobs and buttons are easy to operate.

KEEP INFORMED AND ENTERTAINED. Winnebago Industries' engineers worked closely with the radio manufacturer to create a new RV-RADIO™ which is designed specifically for motor home applications. The

BUILT FOR COMFORT. The multi-adjustable, high-back driver and passenger cab seats fully recline. The driver seat also includes adjustable lumbar support. Select the available UltraLeather HP™ covering for added comfort.



ENJOY A RELAXING DRIVE. Controls are positioned for driver comfort and convenience, including standard power windows and door locks, and the Sundancer dash area can be further enhanced with the available woodgrain dash appliqué. Driver and passenger airbags are standard.





Rain and condensation runoff are no problem. The built-in rain gutter drains water away from the entrance door and windows to help keep your coach clean and streak free.



Tow with ease. The 3,500-pound towing capacity and 350-pound tongue weight hitch is standard.+



Large exterior mirrors with low-mount extended arms adjust easily with electric remote controls and are heated for added convenience.



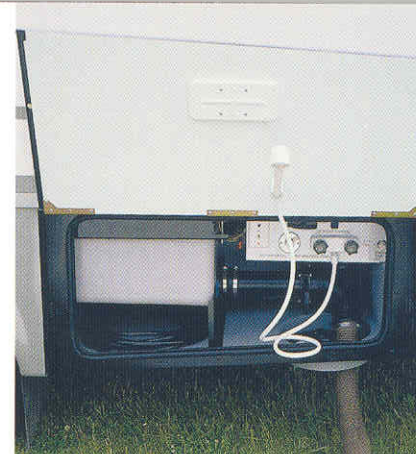
The available digital satellite system gives you greater programming options and, with pre-wiring standard, you can select this feature now or install it later.



ENTER AND EXIT WITH EASE. A large interior assist bar and exterior assist handle provide stability when entering and exiting.



ADD MUSIC TO YOUR OUTDOORS. The available exterior entertainment center includes an AM/FM stereo with cassette or CD and speakers as well as a 12 volt DC receptacle, a TV jack and a removable table.



PLUMBING SERVICE POINTS are conveniently located in the heated service center. A water heater bypass and manual winterization valve are standard, making off-season storage preparation a snap. Rinse off muddy shoes or gear outside with the exterior wash station. It's a standard Sundancer feature.



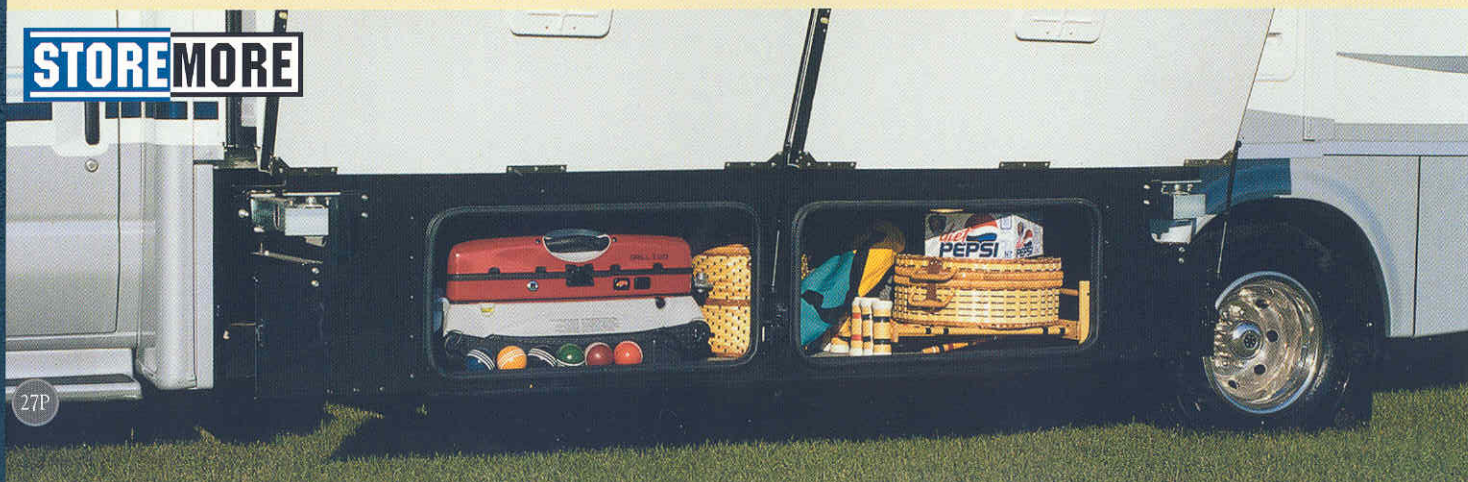
ONE KEY OPENS MOST EVERYTHING thanks to the innovative KeyOne™ lock system. A single, double-bitted key, which can be inserted in either direction, opens most exterior compartments and doors so you won't have to fumble through an entire pocket full of keys to find the one you want.



THE AVAILABLE 4,000 WATT ONAN® MICROQUIET™ GENERATOR is convenient when shoreline power is not available.

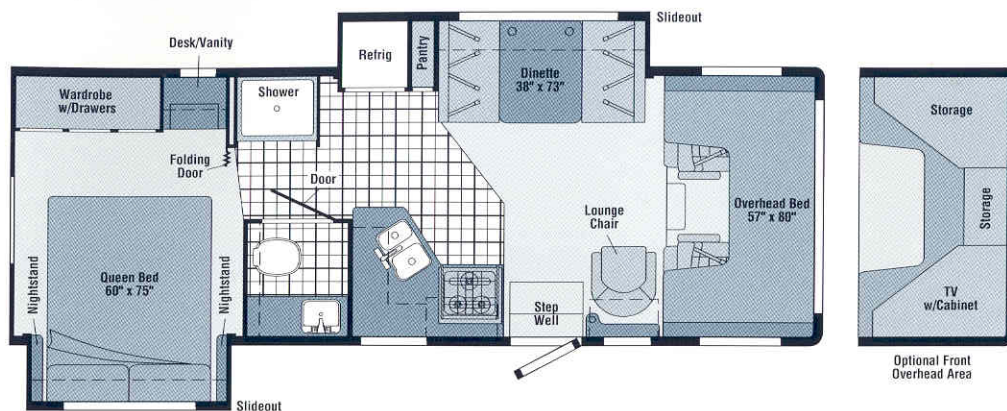
THE STOREMORE SLIDEOUT SYSTEM is standard on the Sundancer 27P and 31C. A Winnebago Industries original, it's still the industry's premier slideout system. The large StoreMore storage compartments can accommodate oversized and odd-shaped items, and extend with the slideroom for easy access. The slideout system, which is found on all Sundancers, is hydraulically-powered and provides a reliable and low maintenance system that is fast and powerful. Exterior compartment doors feature full-length valance hinges and single-paddle latches for easier opening.

STOREMORE



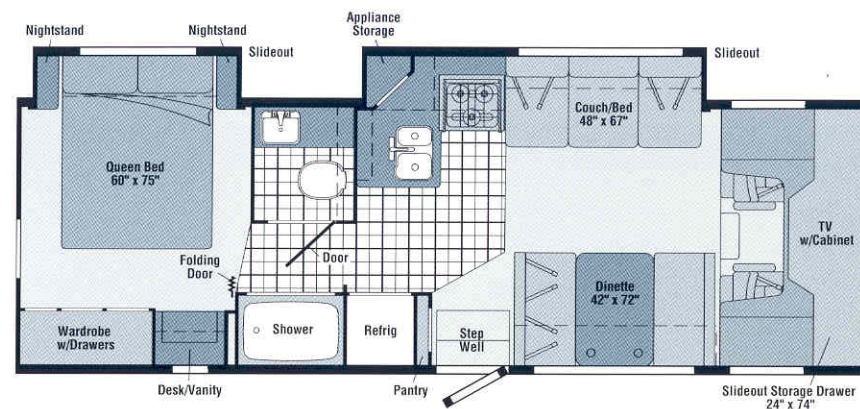
27P

2002 SUNDANCER FLOORPLANS



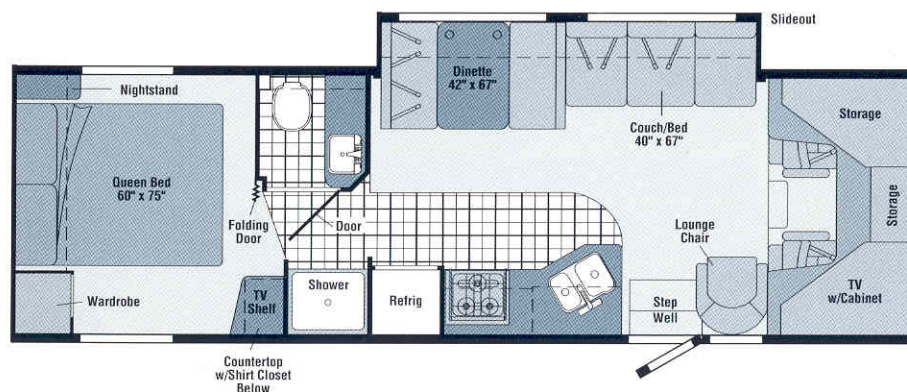
27P

- Dinette/pantry/refrigerator **STOREMORE** Slideout System
- Rear bedroom slideout w/large wardrobe and desk/vanity area
- NEW movable hoop-base swivel/glider lounge chair
- Available front overhead cabinet w/TV and storage



30V

- Couch/galley slideout
- Rear bedroom slideout w/large wardrobe and desk/vanity area
- Large L-shaped galley
- Front overhead cabinet w/TV and storage



31C

- Couch/dinette **STOREMORE** Slideout System
- Front overhead cabinet w/TV and storage
- Split bath w/private shower



VINYL FLOORCOVERING



SEAT BELTS

Note: Dimensions shown are for sleeping space only and dashed lines denote overhead storage areas.

THE PERFECT BLEND OF FUNCTION AND STYLE. Your Sundancer is equipped with a crowned one-piece fiberglass roof, fiberglass running boards and stainless steel wheel liners, and you can choose the available Ride-Rite auxiliary rear air springs.



2002 SUNDANCER SPECIFICATIONS

	27P	30V	31C
Length	27'11"	30'2"	31'4"
Exterior Height w/AC*	11'5"	11'8"	11'6"
Exterior Width^	8'5.5"	8'5.5"	8'5.5"
Exterior Storage (cu. ft.)	43	78	70
Interior Height	6'7"	6'7"	6'7"
Interior Width	8'	8'	8'
Fresh Water Capacity w/Heater* (gal.)	36	41	41
Holding Tank Capacity - Black/Gray (gal.)	42/35	35/38	35/38
LP Capacity^ (gal.)	18	18	18
Fuel Capacity (gal.)	55	55	55
GCWR (lbs.)	20,000	20,000	20,000
GVWR (lbs.)	14,050	14,050	14,050
GAWR - Front (lbs.)	4,600	4,600	4,600
GAWR - Rear (lbs.)	9,450	9,450	9,450
Wheelbase	190"	205"	219"

AUTOMOTIVE/CHASSIS

	27P	30V	31C
Chassis - Ford® E450 6.8L Super-Duty V-10 SOHC Triton™ engine, 305 hp, automatic 4-speed overdrive transmission, 4-wheel anti-lock brakes, 130 amp alternator, dual airbags	\$	\$	\$
Tire spare, Tire Tool wrench, Trailer Hitch † 3500# draw bar/350# maximum vertical tongue weight & wiring, Wheel Liners stainless steel	\$	\$	\$
Air Springs auxiliary Ride-Rite® rear	0	0	0

CAB AREA & DRIVER CONVENIENCES

	27P	30V	31C
Beverage Holder , Cab Seats (fabric) w/3 point adjustable seat belts, armrest, lumbar support, multi-adjustable slide/recline, Cigarette Lighter/12 Volt Electrical Supply , Cruise Control , Curtain cab divider, Domelights , Floor Mats rubber driver & passenger, Hood Release , Power Door Locks , Steering Wheel tilt w/power assist, Sunvisors (2) , Trim Panels driver & passenger doors (chassis supplied) w/map pocket	\$	\$	\$
Cab Seats UltraLeather HP™ seating surface	0	0	0
Instrument Panel woodgrain appliqué	0	0	0
Monitor System rearview w/single camera & 1-way audio, Audiovox®	0	0	0

ENTERTAINMENT

	27P	30V	31C
RV-RADIO™ (Cab) AM/FM stereo cassette/CD player, roof-mounted flexible rubber antenna, speakers (4), Satellite System Ready , Telephone input & interior jack, TV Enhancement Package antenna (amplified), 12 volt powerpoint(s), interior jack(s), coax wiring, cable input	\$	\$	\$
Entertainment Center (Exterior) w/Cassette or CD Player DC receptacle, AC duplex receptacle, AM/FM radio, TV jack, radio antenna, speakers (2), lockable compartment, removable table	0	0	0
Satellite Dish Antenna Winegard® RV digital, elevation sensing unit	0	0	0
Sound System* deluxe, w/QSurround™ TV 27" (25" 30V) stereo color AC, stereo VCR, amplifier, cube speakers (5), sub-woofer, video selection system	0	0	0
TV 13" Color 12 Volt & VCP* w/remotes	0		
TV 25" Color AC* w/remote, video selection system	0	\$	\$
VCR w/remote*	0	0	0

INTERIOR

	27P	30V	31C
Clock , Cupholders , Light swivel (front bunk), Lights ceiling, incandescent w/wall switches, Lights reading, Powerpoint 12 volt, dining room, Shades day/night pleated (lounge, dinette, bedroom), mini blinds (galley)	\$	\$	\$
Bunk front overhead w/mattress, sliding side windows, pleated privacy curtain, side storage cabinets	\$		
Bunk Ladder*	0		
Bunk Window delete	0		
Mirror wall			\$
Picture			\$
Windows dual-pane/thermo-insulated	0	0	0

CABINETRY

	27P	30V	31C
Woodgrain Washed Maple stile-and-rail construction w/arched raised panel inserts on upper doors	\$	\$	\$
Woodgrain Salem Cherry stile-and-rail construction w/arched raised panel inserts on upper doors	0	0	0

COUNTERTOPS

	27P	30V	31C
Laminate w/wood-look edge	\$	\$	\$

FLOORCOVERING

	27P	30V	31C
Carpeting w/pad, Vinyl bath & galley	\$	\$	\$

FURNITURE

	27P	30V	31C
Chair lounge (swivel/slide)			\$
Chair lounge, hoop base (swivel/glider) w/magazine rack (must be secure when traveling)	\$		
Couch w/throw pillows		\$	\$
Dinette access to storage below	\$	\$	\$

GALLEY	27P	30V	31C
Countertop flip-up extension, Faucet single-control, Light ceiling, fluorescent, Microwave Oven w/Range Fan , Range three-burner w/oven, Magic Chef® Refrigerator/Freezer large double-door, Norcold® Sink double-bowl molded w/sink covers, Wall Border	S	S	S
Appliance Storage Cabinet w/roll-up tambour door	S		
Coffeemaker	O	O	O
Pantry	S	S	
Partition glass, end of galley	S		
Water Purification w/separate faucet	O	O	O

BATH	27P	30V	31C
Cabinet lavatory, Cabinet medicine, Faucet (lavatory) dual-control, Faucet (shower) dual-control w/flexible shower head, Light shower, Magazine Rack , Mirror w/frame, Shower w/removable clothes rod, Shower Door textured glass, Shower Skylight , Sink rectangular, Tissue Holder , Toilet w/foot pedal flush, Towel Bar , Towel Rack 3-rod, mounted to door	S	S	S
Towel Ring	S	S	

BEDROOM	27P	30V	31C
Bed queen, Serta®, innerspring, w/underbed storage, bedspread, pillow shams, throw pillow, Lights decorative wall lamp(s), Lights reading, Wall Border , Wardrobe Cabinet light, Nightstand(s)	S	S	S
Headboard	S		
Shirt Closet w/2 drawers	S		
Desk/Vanity Cabinet w/flip-up countertop, wardrobe, drawers & folding chair	S	S	

EXTERIOR	27P	30V	31C
Awning Rails w/rain gutters, Door entrance w/separate screen door, deadbolt lock, Entrance Door Steps double, electric w/door-jamb switch, Graphics Package Light Silver Metallic or Opal Blue Metallic, Ladder , Lights porch light w/interior switch, Mirrors plate mount, electric remote w/defrost, Mudflaps rear, Receptacle AC duplex, Running Boards fiberglass, Sidewall Skin one-piece smooth fiberglass, Storage Compartments smooth valance panels, trunk liner,* gas cylinders, Tri/Mark KeyOne™ System, paddle latch, lights	S	S	S
Awning* patio	O	O	O

SYSTEMS	27P	30V	31C
Air Conditioner (Roof) 14,800 BTU, ceiling-ducted w/wall thermostat, Auxiliary Start Circuit , Batteries (Coach) (2) deep cycle, Battery (Coach) disconnect system, Battery Charge Control automatic dual, Drain water tank, Electrical Distribution System AC & DC breaker panels, 45 amp converter/charger, Furnace 30,000 BTU, low profile, Generator Prep Kit , Monitor Panel battery condition gauge, generator hourmeter gauge,* generator start/stop switch,* holding tank levels, LP tank level, water heater light(s), water heater switch, water pump switch, water tank level, Power Cord 30 amp 25', Roof Vent* non-powered, lounge, bedroom, Roof Vent powered, bath, Service Center (Drainage/Water) city water hookup/tank diverter fill, drainage valves, exterior wash station w/pump switch,* 10' sewer hose, Service Center (Electrical) cable input, power cord, telephone input, Tank holding, heated compartment, Tank LP, permanent mount w/gauge, Water Heater 6 gallon, electronic ignition, LP gas Water Heater Winterization Bypass Valve manual, Water Hookup city, Water Pump demand, Water System Winterizing Valve manual, Water Tank Fill gravity, w/locking door	S	S	S
Generator* 4,000 watt, Onan® MicroQuiet™ gas	O	O	O
Home Comfort Plus Package* roof AC heat pump, auxiliary automotive heater, nonpowered insulated roof vent (bedroom), powered insulated ventilator fans (lounge, bath)	O	O	O
Inverter* DC/AC, 130 watt	O	O	O
Roof Vent powered ventilator fan* lounge	O	O	O
Solar Panel* 10 watt w/battery charger	O	O	O
Water Heater 6 gallon, electronic ignition, 120 vac/LP gas w/Motoraid (Motoraid 27P & 31C only), includes energy management system	O	O	O

SLIDEOUT	27P	30V	31C
Slideout Room dinette/pantry/refrigerator, STORE-MORE®	S		
Slideout Room bed w/slidoor cover			
Slideout Room couch/galley, Slideout Room bed w/slidoor cover	S		
Slideout Room couch/dinette w/slidoor cover, STORE-MORE®	S		



LIGHT SILVER METALLIC



OPAL BLUE METALLIC

SAFETY	27P	30V	31C
Airbags driver & passenger, Assist Bar interior, Assist Handle exterior, acrylic w/logo, Bumpers front & rear, Detectors/Alarms LP leak, smoke, carbon monoxide, Fire Extinguisher 10 B.C., Ground Fault Interrupter , Light center high-mount stop lamp, Light(s) courtesy w/wall switch(es), Seat Belts cab, 3 point, Seat Belts lap (in selected areas), Window escape	S	S	S

WARRANTY	27P	30V	31C
12-month/15,000-mile basic limited warranty ,	S	S	S
36-month/36,000-mile warranty on structure,**			
10-year limited parts & labor warranty on roof			

- The height of each model is based on the curb weight of a typically equipped unit on the standard chassis. The actual height of your vehicle may vary by as much as 2" depending on chassis or equipment variations.
 - ^ Sundancer floorplans feature a wide-body design — over 96". In making your purchase decision, you should be aware that some states restrict access on some or all state roads to 96" in body width. Before making your purchase decision, you should confirm the road usage laws in the states of interest to you.
 - * Not all items available in combination. See dealer for details.
 - ◇ Capacities shown are tank manufacturer's listed water capacity (W.C.). Actual filled LP capacity is 80% of listing due to overfilling prevention device on tank.
 - S Standard
 - O Optional
 - + Actual towing capacity is dependent on your particular loading and towing circumstances which includes the GVWR, GAWR and GCWR as well as adequate trailer brakes. Please refer to your vehicle's operator's manual for further towing information.
 - ** See your dealer for complete warranty documentation information.
- Winnebago Industries' continuing program of product improvement makes specifications, equipment, model availability and prices subject to change without notice. Comparisons to other motor homes are based on the most recent information available.

NOT ALL MOTOR HOMES ARE CREATED EQUAL, and as you take a closer look, you'll see that there is much more to an Itasca Sundancer than a long list of standard features and compelling floorplans. Beneath it all, you'll find a SuperStructure foundation of strength and durability backed by Winnebago Industries' recognized service and warranty support.

LAMINATED RISERS feature a welded aluminum core for superior strength and provide a stable base for the floor structure and storage compartments.

THE FOUNDATION SUBSTRUCTURE assembly is precision-aligned to maximize longitudinal and cross-coach support, as well as strength and durability.

CRITICAL STEEL COMPONENTS are treated using an advanced electrodeposition coating process that provides superior corrosion protection.

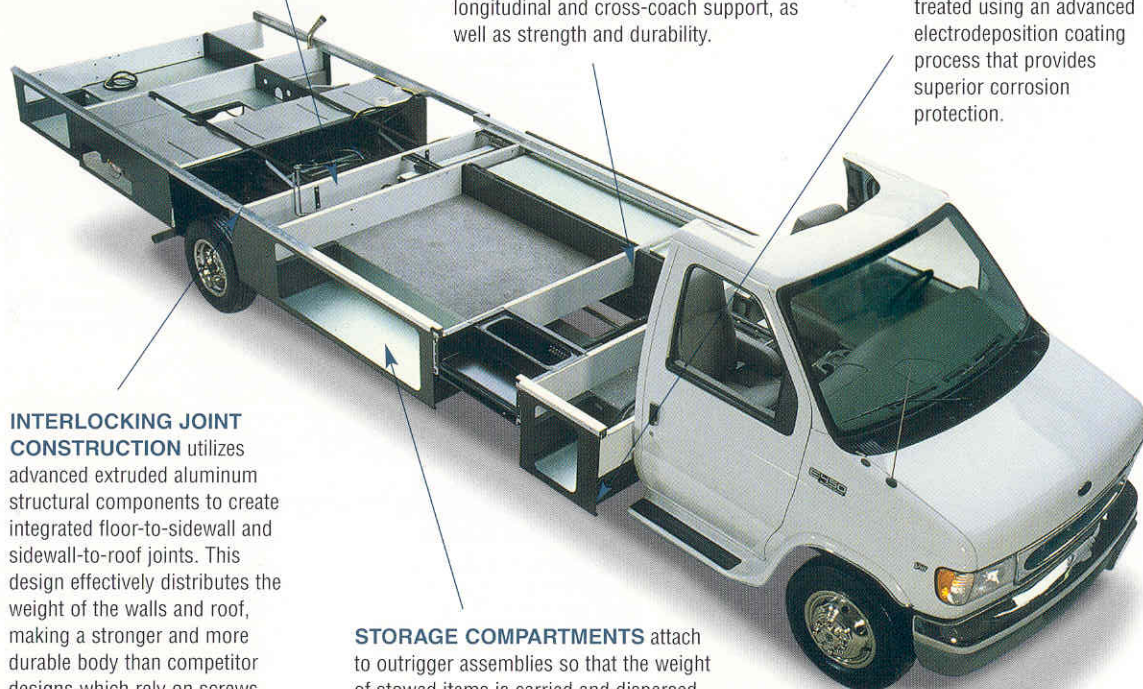
INTERLOCKING JOINT CONSTRUCTION utilizes advanced extruded aluminum structural components to create integrated floor-to-sidewall and sidewall-to-roof joints. This design effectively distributes the weight of the walls and roof, making a stronger and more durable body than competitor designs which rely on screws to carry the weight.

STORAGE COMPARTMENTS attach to outrigger assemblies so that the weight of stowed items is carried and dispersed throughout the foundation substructure.

**SUPER
STRUCTURE™**

is the term given to Winnebago Industries' structural motor home design and construction.

Rather than a single component, it is the culmination of design integration that incorporates steel and aluminum substructures, composite design laminated floor risers, interlocking joint technology and Thermo-Panel® floor, roof and sidewalls to form a high-strength, durable vehicle body.



1-YEAR OLD ITASCA FIBERGLASS ROOF



1-YEAR OLD COMPETITOR'S RUBBER ROOF



BUILT TO A HIGHER STANDARD. Sundancer features a crowned, one-piece fiberglass roof, backed with a 10-year limited parts and labor warranty. Fiberglass offers superior strength, attractiveness and durability over the rubber roofs found on many competitive models. Over time, rubber roofs are susceptible to chalking, streaking and degradation, and have less puncture and tear resistance than fiberglass.

COMMITTED TO SERVICE. We back our motor homes with the best service after the sale in the industry.



- 12-month/15,000-mile basic limited warranty
- 36-month/36,000-mile warranty on structure
- Standard 10-year limited parts and labor roof warranty
- Complimentary 24-hour roadside assistance program
- TripSaver emergency warranty parts shipments
- National dealer service network



RECOGNIZED QUALITY. Recreation Vehicle Dealer Association members annually rate RV manufacturers on the quality of their products, and sales and service support. Winnebago Industries has achieved the coveted Quality Circle award every year since its inception, the only major motor home manufacturer to do so.



ALL MOTOR HOMES ARE NOT CREATED EQUAL. Learn more about what sets Winnebago Industries apart. Ask your dealer for this guide. It will help you learn what makes Winnebago Industries motor homes distinctly superior to other brands.

WARNING: JOINING WIT HAS BEEN KNOWN TO CAUSE EXCESSIVE FUN. Winnebago-Itasca Travelers (WIT) is a club for owners of Winnebago Industries motor homes. WIT is a great way to meet people and offers you:



- Caravans and rallies
- Local and state group activities
- Benefits for RVers

www.winnebagoind.com

For Sales and Service Information Contact:



©2001 Winnebago Industries, Inc.



Printed in USA

Seat belts are your most important hookup. Always buckle up.