

*Spirit*<sup>®</sup>  
2003





The Itasca Spirit is known for setting the standard for Class C motor home value and this year is no exception. The 2003 Spirit offers the innovative design and construction quality you expect from Winnebago Industries® along with an impressive list of standard features and available amenities. Never ones to rest on our laurels, we've added a number of new features for 2003, including an advanced radius roof design which maximizes headroom and provides improved insulation.

With six distinct floorplans ranging from 22 to 31 feet in length, we're confident you'll find a Spirit that will exceed your expectations, but not your budget.



29B BAYWATER

TYPICAL CLASS C MOTOR HOMES CAN'T MATCH the refinements and attention-to-detail in the Spirit. The beautiful cabinetry features stile-and-rail door construction, complete with a catalyzed protective coating on the doors and drawers. This provides a highly-durable, luxurious finish typically found in exclusive home cabinetry. Other popular features include day/night pleated window treatments with both sheer and opaque shades so you can choose your level of light and privacy. Ceiling-ducted air conditioning provides even cooling throughout the coach and is controlled by a convenient wall-mounted thermostat. Choose the available heat pump and warm your coach on cool mornings without turning on the furnace.

#### INTERIOR DECORS

GREENGAGE



BAYWATER



WOODBINE BEIGE



PORTSMOUTH OAK  
WOODGRAIN



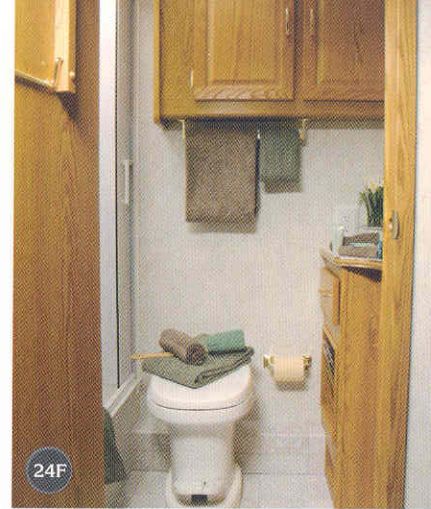
*Spirit*  
2003





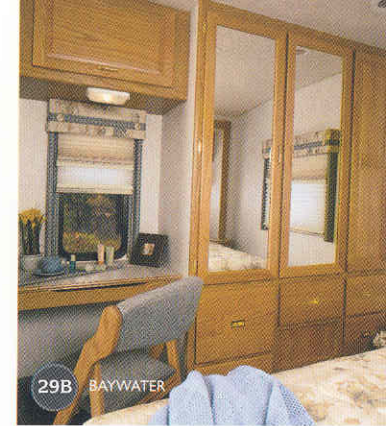
A GALLEY WITH EVERYTHING, including a built-in, over-the-range microwave, a three-burner Magic Chef® range with oven and a double-bowl, molded sink. Congoleum® vinyl floorcovering throughout the galley and bath area makes for easy cleanups. A drop-in sink cover provides additional countertop work space. Large handles on the cabinetry allow for easy opening, while positive catches keep doors and drawers secure when they are closed. The 31T floorplan places the available 19" TV and VCR in the galley area for comfortable viewing from either the dinette or couch.

31T



24F

WITH LAYOUTS DESIGNED TO MAXIMIZE SPACE, COMFORT AND USEABILITY, the bathroom features full-size fixtures and amenities like a residential-height toilet with foot-pedal flush. Numerous cabinets provide ample storage and a removable clothes rod can be inserted in the shower to create additional hanging space when traveling.



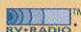
29B BAYWATER

THE REAR SLIDEROOM on the 29B creates a truly spacious bedroom. Storage is plentiful with deep, overhead cabinets, an underbed compartment and a large, mirrored wardrobe. The built-in desk/vanity area doubles as a handy workspace that includes a folding chair and a flip-up mirror.



FOR ADDED ENJOYMENT, select the available front entertainment center. It comes with a 25" TV, video selection system and overhead storage cabinets. Every Spirit is also prewired for an available satellite system to enhance your viewing options. The available 130 watt inverter provides 110-volt power so you can watch TV even when shoreline or generator power is not available.\*



ITASCA OWNERS ARE RAVING about the  Bigger buttons, more features and a larger display make it one of our most talked-about innovations. AM/FM stereo, cassette deck and CD player are all included. There's even a built-in weather band to keep you informed of travel conditions when you're on the road. (Standard on Ford® chassis models only)



THE FLUSH-MOUNTED MONITOR PANEL is conveniently located, allowing you to quickly and easily check the status of onboard systems.



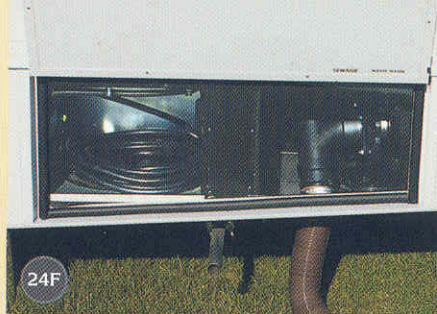
THE SPIRIT MAKES DRIVING A PLEASURE.

Loaded with standard features like power windows and door locks, controls are strategically positioned for driver convenience. Cupholders, a storage tray and a large storage compartment are incorporated into the center console. The high-back cab seats are designed for maximum comfort during extended drives with fixed lumbar support and multi-position recline features. For added luxury, choose the available UltraLeather HP™ seat covering. Driver and passenger airbags are standard.



BAYWATER 29B





**THE SERVICE CENTER** is conveniently located to allow quick and easy access to electrical and wastewater connections. The compartment is enclosed to protect hook-ups from road spray and debris.



**KEEP THE MESS OUTSIDE.** Rinse off sandy toys or muddy shoes before entering your Spirit at the available exterior wash station.



**TOW WITH EASE.** The 3,500-lb. towing capacity and 350-lb. tongue weight hitch is standard.<sup>†</sup>



**THE EXTERIOR MIRRORS** provide a large field of vision. The advanced, dual-breakaway design allows them to fold in when needed. Upgrade includes electric remote and defrost for added convenience.



**WATER RUNOFF** is no problem with built-in rain gutters that divert water away from the entrance door and windows. A vinyl patio awning can also be added for your outdoor enjoyment.<sup>‡</sup>



**EXTEND YOUR CAMPING SEASON** with available features like a heated holding tank, a water heater bypass valve and dual-pane windows.



**ENJOY YOUR FAVORITE MUSIC OUTDOORS** with the available entertainment center. It features an AM/FM stereo with cassette or CD, speakers, 12-volt DC receptacle, TV jack and a removable table.



**THE AVAILABLE 4,000 WATT ONAN® MICROQUIET™ GENERATOR** supplies 110-volt AC power when a shoreline source is not available.

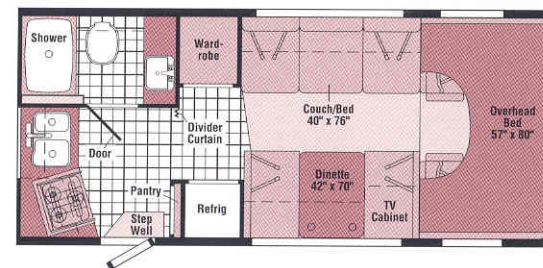


**THE SLIDEOUT SYSTEM**, found on the Spirit 24F, 29B and 31T, uses the first electric-powered slideout system to meet our stringent quality and performance standards. It features powerful, reliable, dual-ram, dual-motor technology with electronic synchronization for improved room movement and better sealing. Built-in diagnostics make maintenance fast and easy. The StoreMore slideout system found on the 31T is a Winnebago Industries original design and is still the industry's premier slideout system. StoreMore allows the large exterior storage compartments that accommodate oversized and odd-shaped items to extend with the slideroom for easier access.

## SPIRIT FLOORPLANS

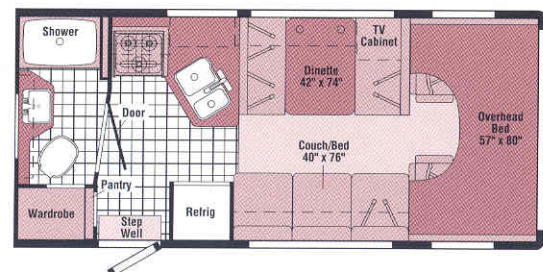
22E

- Rear corner bath
- Convenient angled rear galley
- Generous sleeping and seating accommodations

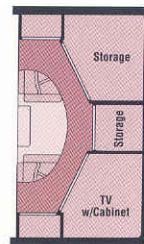
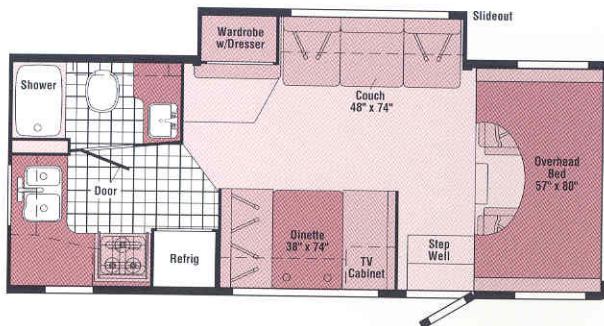


22R

- Roomy angled galley
- Large rear bath w/wardrobe
- Generous sleeping and seating accommodations



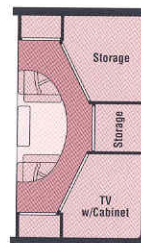
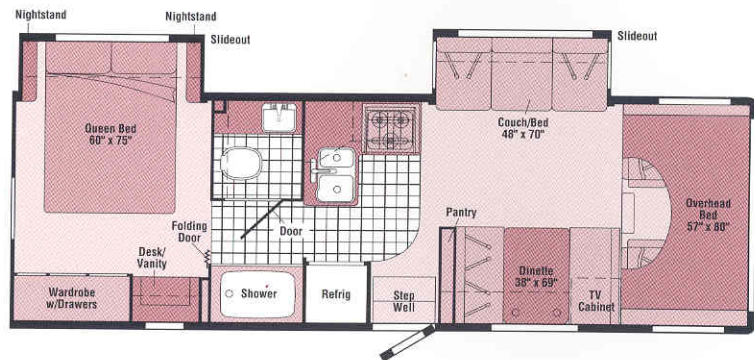




Optional Front Overhead Area

24F

- Couch/wardrobe slideout
- Roomy wardrobe storage area
- Large L-shaped rear galley
- Overhead bunk or available entertainment center w/25" TV



Optional Front Overhead Area

29B

- Dual sliderooms
- Split bath design
- Large bedroom wardrobe w/drawers and a desk/vanity area
- Overhead bunk or available entertainment center w/25" TV

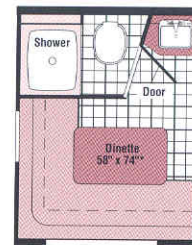


VINYL FLOORCOVERING

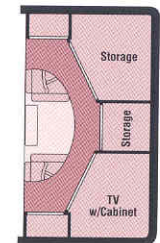
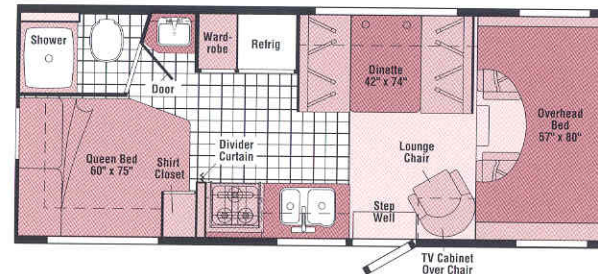
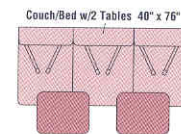


SEAT BELTS

**Note:** Dimensions shown are for sleeping space only and may vary due to styling differences. Dashed lines denote overhead storage areas.



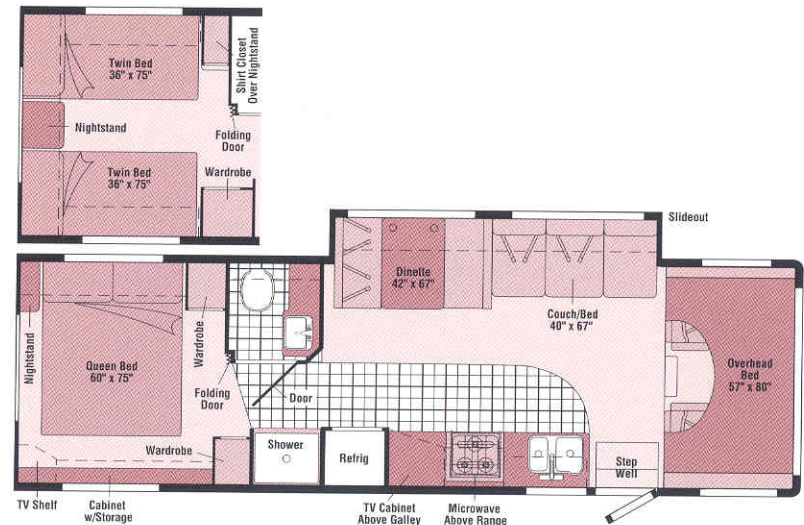
\*Not available as sleeping space in Canada



Optional Front Overhead Area

24V

- Swivel/glider/rocker lounge chair
- Available rear L-shaped dinette
- Private rear bath and bathroom area w/queen-sized bed
- Overhead bunk or available entertainment center with 25" TV



31T

- Couch/dinette **STOREMORE** slideout
- Inline galley area w/TV cabinet
- Dual wardrobes and vanity cabinet w/storage
- Available queen or twin beds



## THE PERFECT BLEND OF FUNCTION AND STYLE.

The exterior of the Itasca Spirit not only looks sharp with the available awning and stainless steel wheel liners, it is also highly functional with aluminum running boards and tough, one-piece fiberglass sidewalls and roof.



### 2003 SPIRIT SPECIFICATIONS

	22E	22R	24F	24V	29B	31T
<b>= Ford®, C = Chev®, FD = Ford® Diesel</b>						
<b>Length – F/C</b>	22'11"/22'6"	22'11"/22'6"	24'8"/25'	24'6"/24'11"	29'4"/NA	31'4"/NA
<b>Exterior Height w/A/C* – F/C</b>	11'2"/11'3"	11'2"/11'3"	11'2"/11'3"	11'2"/11'3"	11'4"/NA	11'4"/NA
<b>Exterior Width^</b>	8'5.5"	8'5.5"	8'5.5"	8'5.5"	8'5.5"	8'5.5"
<b>Exterior Storage (cu. ft.)<sup>∞</sup></b>	11.1	12	33.9	26.9	52.3	39.5
<b>Interior Height</b>	6'8"	6'8"	6'8"	6'8"	6'8"	6'8"
<b>Interior Width</b>	8'	8'	8'	8'	8'	8'
<b>Fresh Water Cap. w/Heater* (gal.)</b>	36	36	39	46	42	37
<b>Holding Tank Cap. – Black/Gray (gal.)</b>	30/36	36/30	37/35	37/35	25/31	34/32
<b>LP Cap. (gal.)</b>	12	12	12	12	18	18
<b>Fuel Cap. – F/C (gal.)</b>	37/35	37/35	55/55	55/55	55/NA	55/NA
<b>GCWR – F/C/FD (lbs.)</b>	18,500/17,000/NA	18,500/17,000/NA	20,000/17,000/20,000	18,500/17,000/NA	20,000/NA/NA	20,000/NA/NA
<b>GVWR – F/C/FD (lbs.)</b>	10,700/12,300/NA	10,700/12,300/NA	14,050/12,300/14,050^	11,500/12,300/NA	14,050/NA/NA	14,050/NA/NA
<b>GAWR – Front, F/C/FD (lbs.)</b>	3,900/4,300/NA	3,900/4,300/NA	4,600/4,300/4,600	4,600/4,300/NA	4,600/NA/NA	4,600/NA/NA
<b>GAWR – Rear, F/C/FD (lbs.)</b>	7,500/8,600/NA	7,500/8,600/NA	9,450/8,600/9,450	7,800/8,600/NA	9,450/NA/NA	9,450/NA/NA
<b>Wheelbase – F/C</b>	138"/139"	138"/139"	158"/159"	158"/159"	190"/NA	220"/NA

#### AUTOMOTIVE/CHASSIS

	22E	22R	24F	24V	29B	31T
<b>Chassis</b> – Ford® E450 6.8L Super-Duty V10 SOHC Triton® engine, 305-hp, automatic 4-speed overdrive transmission, 4-wheel anti-lock brakes, 130-amp. alternator, dual airbags			\$		\$	\$
<b>Chassis</b> – Ford® E350 6.8L Super-Duty V10 SOHC Triton® engine, 305-hp, automatic 4-speed overdrive transmission, 4-wheel anti-lock brakes, 130-amp. alternator, dual airbags	\$	\$	\$			
<b>Chassis</b> – Chevrolet® 6.0L V8 engine, 4L80-E transmission, 300-hp, 4-wheel anti-lock brakes, 145-amp. alternator, dual airbags	0	0	0	0		
<b>Chassis</b> – Ford® E450 7.3L Power Stroke® diesel engine, 215-hp, automatic 4-speed overdrive transmission, 4-wheel anti-lock brakes, 130-amp. alternator, dual airbags		0				
<b>Air Springs</b> auxiliary rear					0	0
<b>Tire</b> spare, <b>Tire Tool</b> wrench, <b>Trailer Hitch</b> 3,500-lbs. draw bar/350-lbs. maximum vertical tongue weight & wiring, <b>Wheelcovers</b> stainless steel	\$	\$	\$	\$	\$	\$
<b>Wheel Liners</b> stainless steel	0	0	0	0	0	0

#### CAB AREA & DRIVER CONVENIENCES

	22E	22R	24F	24V	29B	31T
<b>Beverage Holder, Cab Seats</b> (fabric) w/3-point adjustable seat belts, armrest, lumbar support, multi-adjustable slide/recline, <b>Cigarette Lighter/12-Volt Powerpoint, Cruise Control, Curtain</b> cab divider, <b>Domelight, Floor Mats</b> rubber driver & passenger, <b>Hood Release, Power Door Locks &amp; Windows, Steering Wheel</b> tilt w/power assist, <b>Sunvisors (2), Trim Panels</b> driver & passenger doors (chassis supplied)	\$	\$	\$	\$	\$	\$
<b>Cab Seats</b> UltraLeather HP™ seating surface	0	0	0	0	0	0

#### ENTERTAINMENT

	22E	22R	24F	24V	29B	31T
<b>Satellite System Ready, TV Enhancement Package</b> antenna (amplified), 12-volt powerpoint(s), interior jack(s), coax wiring, cable input (31T includes bedroom TV shelf or stand*)	\$	\$	\$	\$	\$	\$

#### ENTERTAINMENT (CONT.)

	22E	22R	24F	24V	29B	31T
<b>Radio (Cab)</b> AM/FM stereo cassette/CD, speakers (4), Ford®	\$	\$	\$	\$	\$	\$
<b>Radio (Cab)</b> AM/FM stereo CD, speakers (4), Chevrolet®	\$	\$	\$	\$		
<b>Entertainment Center (Exterior) w/Cassette or CD Player</b> w/remote, DC receptacle, AC duplex receptacle, AM/FM radio, TV jack, radio antenna, removable table, speakers (2), lockable compartment	0	0	0	0	0	0
<b>Satellite Dish Antenna</b> , RV digital, elevation sensing unit	0	0	0	0	0	0
<b>TV 13" Color 12-Volt &amp; VCP*</b> w/remotes, front lounge/dinette area w/slide/swivel shelf	0	0	0	0	0	
<b>TV 19" Color AC</b> w/remote, video selection system, galley overhead cabinet*						0
<b>TV 19" Color AC &amp; VCR</b> w/remotes, video selection system, galley overhead cabinet*						0
<b>TV 25" Color AC*</b> w/remote, video selection system, includes front overhead entertainment center		0	0	0		
<b>VCR</b> w/remote*		0	0	0		

#### INTERIOR

	22E	22R	24F	24V	29B	31T
<b>Bunk</b> front overhead w/mattress, sliding side windows, privacy curtain, side storage cabinets, <b>Ceiling</b> textured fabric, <b>Cupholder(s)</b> , <b>Lights</b> ceiling, incandescent w/wall switches*, <b>Roof Vent</b> nonpowered, front overhead bunk*, <b>Shades</b> pleated, day/night (lounge, dinette, bedroom), mini blinds (bath, galley)	\$	\$	\$	\$	\$	\$
<b>Bunk Ladder</b>		\$			\$	
<b>Bunk Window</b> front*, delete	0	0	0	0	0	0
<b>Mirror</b> lounge		\$			\$	
<b>Wardrobe Cabinet</b> carpeted shelf, clothes rod, mirrored door(s)	\$	\$	\$	\$		
<b>Windows</b> dual-pane/thermo-insulated	0	0	0	0	0	0



CABINETY	22E	22R	24F	24V	29B	31T
<b>Woodgrain</b> Portsmouth Oak stile-and-rail construction w/raised panel inserts on upper doors	S	S	S	S	S	S

COUNTERTOPS	22E	22R	24F	24V	29B	31T
<b>Laminate</b> w/T-mold edge	S	S	S	S	S	S

FLOORCOVERING	22E	22R	24F	24V	29B	31T
<b>Carpeting</b> w/pad, <b>Vinyl</b> bath & galley	S	S	S	S	S	S

FURNITURE	22E	22R	24F	24V	29B	31T
<b>Dinette</b> access to storage below	S	S	S	S	S	S
<b>Dinette (Rear)</b> L-shaped*				0		
<b>Lounge Chair</b> w/swivel/slide				S		
<b>Couch</b>	S	S	S	S	S	
<b>Couch</b> w/2 pedestal tables				0		

GALLEY	22E	22R	24F	24V	29B	31T
<b>Faucet</b> single-control, <b>Microwave Oven</b> , <b>Range Hood</b> w/light & fan, <b>Range</b> three-burner w/oven, Magic Chef®, <b>Refrigerator/Freezer</b> double-door, Norcold®, <b>Sink</b> molded, double w/sink cover (countertop material), <b>Wall Border</b>	S	S	S	S	S	S
<b>Countertop</b> flip-up extension				S	S	S
<b>Galley Rail</b> countertop material		S				
<b>Pantry</b>	S	S		S		
<b>Spice Rack</b> built into cabinet	S					

BATH	22E	22R	24F	24V	29B	31T
<b>Cabinet</b> lavatory, <b>Cabinet</b> medicine, <b>Faucet</b> (lavatory) dual-control, <b>Faucet</b> (shower) dual-control w/flexible showerhead, <b>Roof Vent</b> power, <b>Shower</b> w/removable clothes rod, light & skylight, <b>Shower Door</b> folding, <b>Sink</b> rectangular, <b>Tissue Holder</b> , <b>Toilet</b> w/foot-pedal flush, <b>Towel Rack</b> 3-rod, mounted to door	S	S	S	S	S	S
<b>Mirror</b>	S	S		S	S	
<b>Shower Door</b> glass, hinged					0	
<b>Shower Doors</b> glass, sliding					0	
<b>Towel Bar</b>	S	S	S	S	S	
<b>Towel Ring</b>	S	S	S	S	S	

BEDROOM	22E	22R	24F	24V	29B	31T
<b>Bed</b> queen				S		
<b>Bed</b> queen, w/underbed storage				S	S	
<b>Beds*</b> twin, w/underbed storage					0	
<b>Bedsprad</b> pillow shams			S	S	S	
<b>Lights</b> decorative wall lamps (2)				S		
<b>Nightstand(s)</b> w/drawer(s)				S	S	

BEDROOM (CONT.)	22E	22R	24F	24V	29B	31T
<b>Roof Vent</b> nonpowered					S	S
<b>Shirt Closet*</b>				S	0	
<b>Vanity Cabinet</b> w/flip-up countertop, folding chair				S		
<b>Wardrobe Cabinet(s)</b> drawers				S	S	

EXTERIOR	22E	22R	24F	24V	29B	31T
<b>Awning Rails*</b> w/rain gutters, <b>Door</b> entrance w/separate screen door, deadbolt lock, <b>Entrance Door Step</b> single, manual, <b>Ladder</b> , <b>Light</b> porch light w/interior switch, <b>Mirrors</b> plate mount, manual adjust w/convex, <b>Mudflaps</b> rear, <b>Receptacle</b> AC duplex, <b>Running Boards</b> aluminum, <b>Sidewall Skin</b> one-piece smooth fiberglass, <b>Storage Compartments</b> carpeted with trunk liner	S	S	S	S	S	S
<b>Awning**</b> patio	0	0	0	0	0	0
<b>Entrance Door Step</b> single, electric w/doorjamb switch	0	0	0	0	0	0
<b>Mirrors</b> plate mount, electric remote w/defrost	0	0	0	0	0	0

SYSTEMS	22E	22R	24F	24V	29B	31T
<b>Auxiliary Start Circuit</b> , <b>Battery (Coach)</b> Group 24 deep cycle, <b>Battery (Coach)</b> disconnect system, <b>Battery Charge Control</b> automatic dual, <b>Drain</b> 1" water tank, <b>Electrical Distribution System</b> DC fuses, AC breakers, 45-amp. electronic converter/charger, <b>Generator Prep Kit</b> , <b>Monitor Panel</b> wall-mount, battery condition gauge, generator hourmeter gauge,* generator start/stop switch,* holding tank levels, LP tank level, water heater light(s), water heater switch, water pump switch, water tank level, <b>Power Cord</b> 30-amp. 25', <b>Sewer Hose</b> 10', stores in bumper, <b>Tank</b> LP, permanent mount w/gauge, <b>Water Heater</b> 6-gallon electronic ignition, LP gas, <b>Water Heater Winterization Bypass Valve</b> manual, <b>Water Hookup</b> city, <b>Water Pump</b> demand, <b>Water System Winterizing Valve</b> manual, <b>Water Tank Fill</b> w/locking door	S	S	S	S	S	S
<b>Air Conditioner (Roof)</b> 13,500 BTU, ceiling-ducted w/wall thermostat	S	S	S	S		
<b>Air Conditioner (Roof)</b> 14,800 BTU, ceiling-ducted w/wall thermostat					S	S
<b>Heat Pump*</b> w/roof A/C	0	0	0	0	0	0
<b>Batteries (Coach)</b> (2) Group 24 deep cycle maintenance free	0	0	0	0	0	0
<b>Drainage System*</b> heated, electric, 1 heat pad per tank, pipe wraps & lighted on/off switch next to monitor panel	0	0	0	0	0	0
<b>Furnace</b> 25,000 BTU, low profile	S	S	S	S		
<b>Furnace</b> 30,000 BTU, low profile					S	S
<b>Generator*</b> 3,600 watt, Onan® MicroQuiet™, LP			0			
<b>Generator*</b> 4,000 watt, Onan® MicroQuiet™, gas	0	0	0	0	0	0
<b>Inverter*</b> DC/AC, 130 watt			0	0	0	0
<b>Wash Station</b> exterior, w/pump switch	0	0	0	0	0	0

SLIDEOUT	22E	22R	24F	24V	29B	31T
<b>Slideout Room</b> front couch/wardrobe w/slideroom cover			S			
<b>Slideout Room</b> front couch w/slideroom cover					S	
<b>Slideout Room</b> rear bed w/slideroom cover					S	
<b>Slideout Room</b> front couch/dinette w/slideroom cover, <b>STORE MORE</b>					S	

SAFETY	22E	22R	24F	24V	29B	31T
<b>Airbags</b> driver & passenger, <b>Assist Handle</b> exterior, <b>Assist Strap</b> interior, <b>Bumpers</b> front & rear, <b>Detectors/Alarms</b> LP leak, smoke, carbon monoxide, <b>Fire Extinguisher</b> 10 B.C., <b>Ground Fault Interrupter</b> , <b>Light</b> center high-mount stop lamp, <b>Light(s)</b> courtesy w/wall switch(es), <b>Seat Belts</b> cab, 3-point, <b>Seat Belts</b> lap (in selected areas)	S	S	S	S	S	S
<b>Window</b> escape				S	S	S

WARRANTY	22E	22R	24F	24V	29B	31T
<b>12-month/15,000-mile basic limited warranty</b> , <b>36-month/36,000-mile warranty on structure,**</b> <b>10-year limited parts &amp; labor warranty on roof skin</b>	S	S	S	S	S	S

- \* The height of each model is based on the curb weight of a typically equipped unit on the standard chassis. The actual height of your vehicle may vary by as much as 2" depending on chassis or equipment variations.
- ^ Spirit floorplans feature a wide-body design – over 96". In making your purchase decision, you should be aware that some states restrict access on some or all state roads to 96" in body width. Before making your purchase decision, you should confirm the road usage laws in the states of interest to you.
- \* Not all items available in combination. See dealer for details.
- Δ The 24F optional diesel with California emissions is a 14,000 GVWR.
- ∞ Your motor home's load capacity is designated by weight, not by volume, so you cannot necessarily use all available space when loading your motor home.
- ◇ Capacities shown are tank manufacturer's listed water capacity (W.C.). Actual filled LP capacity is 80% of listing due to overfilling prevention device on tank.
- ‡ Awning is not available in Canada.
- § Measurements are based on the most recent information available. See your dealer for updated specifications.
- NA Not Available
- S Standard
- 0 Optional
- + Actual towing capacity is dependent on your particular loading and towing circumstances which includes GVWR, GAWR, and GCWR as well as adequate trailer brakes. Please refer to your vehicle's operator's manual for further towing information.
- \*\* See your dealer for complete warranty information.

Winnebago Industries® continuing program of product improvement makes specifications, equipment, model availability and prices subject to change without notice. Comparisons to other motor homes are based on the most recent information available.



Not all motor homes are created equal. Take a closer look and you'll see there is much more to an Itasca Spirit than a long list of standard features and compelling floorplans. Beneath it all, you'll find a SuperStructure™ foundation of strength and durability.



SuperStructure is the term given to Winnebago Industries' structural motor home design and construction. Rather than a single component, it is the culmination of design integration that incorporates steel and aluminum substructures, welded tubular steel floor risers, interlocking joint technology and Thermo-Panel® floor, roof and sidewalls to form a high-strength, durable vehicle body.

**TUBULAR STEEL RISERS** feature a truss-design core for superior strength and provide a stable base for floor structure and storage compartments.

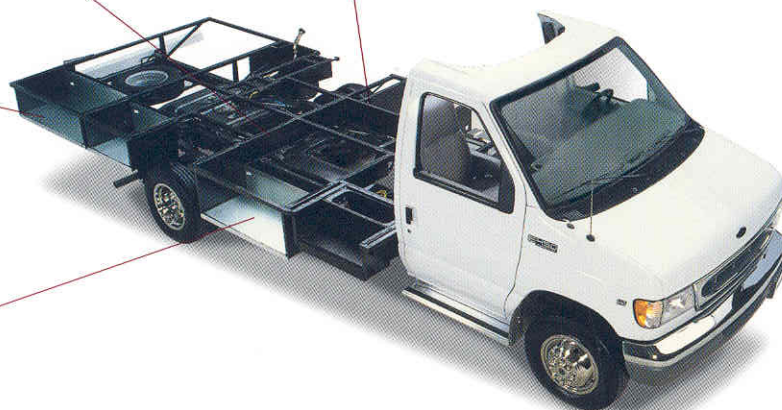
#### CRITICAL STEEL COMPONENTS

are treated using an advanced electrodeposition coating process that provides superior corrosion protection.

#### STORAGE COMPARTMENTS

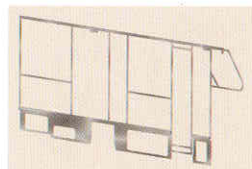
attach to outrigger assemblies so that the weight of stowed items is carried and dispersed throughout the foundation substructure.

**THE FOUNDATION SUBSTRUCTURE** assembly is precision-aligned to maximize longitudinal and cross-coach support as well as strength and durability.



**INTERLOCKING JOINT CONSTRUCTION** utilizes advanced aluminum structural components to create integrated floor-to-sidewall and sidewall-to-roof joints.

This design effectively distributes the weight of the walls and roof, making a stronger and more durable body than competitor designs which rely on screws to carry the weight.



**WE INVENTED THERMO-PANEL SIDEWALL** construction and over the years have perfected this innovative composite construction process. It combines an exterior fiberglass panel, high-density block foam insulation and

welded aluminum support structures to create some of the strongest, most durable and lightweight sidewalls in the industry.



1-YEAR OLD ITASCA FIBERGLASS ROOF



1-YEAR OLD COMPETITOR'S RUBBER ROOF

**BUILT TO A HIGHER STANDARD.** Spirit features a crowned, one-piece fiberglass roof backed with a 10-year limited parts and labor roof skin warranty. Fiberglass offers superior strength, attractiveness and durability over rubber roofs found on many competitive models which can chalk, streak and degrade over time. Fiberglass also provides increased puncture tear resistance.

**COMMITTED TO SERVICE.** We back our motor homes with the best service after the sale in the industry.



**TRIP Saver**  
FAST TRACK PARTS

- 12-month/15,000-mile basic limited warranty
- 36-month/36,000-mile warranty on structure
- Standard 10-year limited parts and labor roof skin warranty
- Complimentary 24-hour roadside assistance program
- TripSaver Fast Track Parts. TripSaver guarantees that in-stock warranty parts ship directly to your dealer within 24 hours.
- National dealer service network



**RECOGNIZED QUALITY.** Recreation Vehicle Dealer Association members annually rate RV manufacturers on the quality of their products, and sales and service support. Winnebago Industries has achieved the coveted Quality Circle award every year since its inception, the only major motor home manufacturer to do so.



#### ALL MOTOR HOMES ARE NOT CREATED EQUAL.

Learn more about what sets Winnebago Industries apart. Ask your dealer for this guide. It will help you learn what makes Winnebago Industries motor homes distinctly superior to other brands.

#### WARNING: JOINING WIT HAS BEEN KNOWN TO CAUSE EXCESSIVE FUN.

Winnebago-Itasca Travelers (WIT) is a club for owners of Winnebago Industries motor homes. WIT is a great way to meet people and offers you:



- Caravans and rallies
- Local and state group activities
- RV travel benefits

[winnebagoind.com](http://winnebagoind.com)

For Sales and Service Information Contact:



©2002 Winnebago Industries, Inc.



Printed in USA

Seat belts are your most important hookup. Always buckle up.