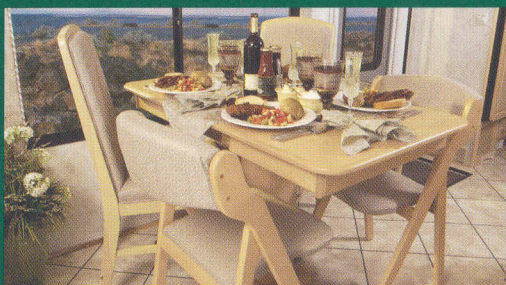


Sunflyer
2003

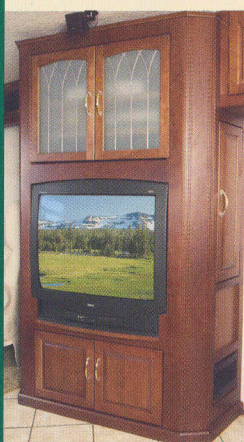


If you want true luxury without a diesel engine, look no further than the 2003 Itasca Sunflyer. It combines the comfort and elegance usually reserved for upscale diesel pushers, with the floorplan flexibility, convenience and driveability of a gas-powered chassis. Built on a 22,000 lb. GVWR Workhorse™ chassis, it includes a powerful 340-hp Vortec gas engine and a dependable Allison® transmission. With four models loaded with standard and available premium features, the Sunflyer is ready to take your motor home experience to a higher level. Preview a 2003 Itasca Sunflyer and discover just how luxurious a gas-powered motor home can be.



The dining table provides spacious dining for two and easily expands to accommodate four place settings when entertaining guests.

Sunflyer
2003



ENJOY THE LARGE, ELEGANT LIVING AREA provided by the StoreMore slideroom as you relax on the premium furniture. You'll especially love the available hoop-base lounge chair. It rocks, reclines and can be placed anywhere when you're not traveling. The couch and lounge chairs can be upgraded to UltraLeather HP™ (shown) for added style and comfort. The entire coach is nicely accented by the abundant interior cabinetry. Its catalyzed, protective topcoat finish creates a highly durable, luxurious satin coating typically found in exclusive home cabinetry.

A BEAUTIFULLY CRAFTED, STAND-ALONE ENTERTAINMENT CENTER is standard on the 39C, 39L and 39T. It offers an excellent view from the couch and features an impressive 32" TV for your viewing pleasure. A front, center-mounted 27" TV is standard on the 36W and can be installed on all other models. Every Sunflyer comes equipped with a 5-channel QSurround™ theater sound system, VCR, and a video selection system for your viewing convenience. Watch TV or operate other 110-volt AC appliances without generator or shoreline power, thanks to the 2,000 watt inverter/charger. A DVD player and manual or powered digital satellite dishes are also available.

INTERIOR DECORS

CORNUCOPIA



SIENNA



SILVER BROCADE



PORTSMOUTH OAK
WOODGRAIN



CONCERT CHERRY
WOODGRAIN



WASHED MAPLE
WOODGRAIN





AN AVAILABLE FOUR-DOOR REFRIGERATOR/FREEZER WITH ICEMAKER (shown here) provides abundant cold food storage space. The standard double-door refrigerator/freezer with icemaker includes a pull-out pantry with adjustable shelves. And with the standard 2,000 watt inverter/charger, you can even make ice while you're driving down the road.

SUNFLYER INNOVATION IS CHANGING THE SHAPE OF MOTOR HOME GALLEYS. This user-friendly, U-shaped design (NA 36W) incorporates Corian® countertops, a Swanstone™ solid-surface sink, Moen® single-control faucet with pull-out sprayer, and a separate faucet for the Everpure® Water System. Appliances include a residential microwave/convection oven or an available G.E. Advantium™ Speedcook oven, a recessed range with Corian cover and an available dishwasher (NA 36W). The available central vacuum cleaner makes for quick cleanups.



THE SLIDEOUT BEDROOM ON THE SUNFLYER offers generous storage in a cedar-lined wardrobe with mirrored doors that lines the back wall. The Sleep Number® Bed is flanked by two nightstands that can include an available stereo with CD player or cassette. An additional wardrobe is part of the slideout on the 39C, 39L and 39T. A desk with a telephone jack and electrical outlet provides an equally versatile vanity area with a tip-up mirror. There's even a 19" TV concealed in a decorative wooden cabinet.

SLEEP NUMBER BED: The bedroom features a queen-size Sleep Number Bed by Select Comfort.™ Using the hand-held remote on each side of the bed, you can quickly and independently adjust the mattress firmness level to your ideal level of comfort and support... your SLEEP NUMBER®, which is The Key to a Perfect Night's Sleep!™



THE REST EASY™ MULTI-POSITION LOUNGE offers seating flexibility and comfort. (Available on 36W and 39T)

1. It starts as a plush couch with a flip-down beverage tray.
2. At the touch of a button, it becomes a relaxing recliner with pull-out ottoman.
3. Touch the button again and it's a comfortable 75" x 60" bed. Rest Easy is also available in UltraLeather HP with dual reclining seats (36W only).

DO LAUNDRY AT YOUR CONVENIENCE with the available combination washer/dryer.

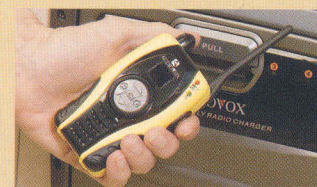
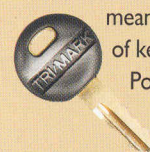


A RECHARGEABLE FLASHLIGHT AND VACUUM are conveniently located so you won't be caught in the dark and you'll always be ready for a quick cleanup.



DRIVING IS A RELAXING PLEASURE. No detail was overlooked in the cab area. Controls are placed within easy reach of the driver and even include an electronic compass and outdoor thermometer. Backing and maneuvering are simplified with the in-dash Sony® color rearview monitor system. Extra conveniences include an available Alpine® GPS Navigational System, bus-style power sunvisors and front privacy curtains with easy-to-use pull cords. The cab seats are covered in soft UltraLeather HP and the driver seat can be upgraded with a six-way, power-assist seat pedestal.

ONE KEY OPENS MOST EVERYTHING thanks to the innovative KeyOne™ System. A single, double-bit key means no fumbling through a pocket full of keys to find the one you want. Power driver-side door locks with a keyless remote come standard for your convenience.



USE THESE HANDY TWO-WAY RADIOS when maneuvering in the campground or for added peace of mind when out on day trips. The four available 14-channel radios have a two-mile range and recharge from the coach batteries using the built-in charging station. Nickel metal hydride batteries provide up to 15 hours of standby time and 90 minutes of talk time on a single charge.



Precision climate control is assured in the Sunflyer thanks to Winnebago Industries® exclusive TrueAir Residential Central Air Conditioning system. TrueAir utilizes superior cooling technology to

TRUEAIR™

supply optimum environmental control throughout the coach. At the heart of the system is a Coleman-Mach® cooling unit. It is located in the basement to provide a lower vehicle profile while reducing noise and eliminating condensation runoff. You'll also find this location is much easier to service and provides a lower center of gravity than less-advanced roof-pod air conditioning units. On cool days, the TrueAir heat pump provides heat, minimizing the need to use LP.



Keep your electrical systems running smoothly even when operating your central air conditioning on 30-amp. shoreline power.

The **POWERLINE™** Energy Management System monitors onboard 110-volt electrical usage and automatically minimizes the nuisance of tripped campground circuits by postponing certain appliances during periods of heavy usage. As demand is lowered, PowerLine automatically returns power to secondary appliances and systems.

The **ONEPLACE™** Systems Center places important and frequently used switches, gauges, level indicators and controls in one convenient location so you can easily check them at a glance.



RV-RADIO™

Our owners are raving about the RV Radio.™ Bigger buttons, more features and a larger display make it one of our most talked-about innovations. AM/FM stereo, cassette deck and CD player are all included. There's even a built-in weather band to keep you informed of travel conditions when you're on the road.

A **RAIN GUTTER** incorporated into the awning rail channels rainwater runoff away from the door and windows.

STANDARD INSULATED ROOF VENTS increase circulation through the coach for improved thermal efficiency.

A **LARGE HOOD OPENING** provides easy access to the conveniently located service checkpoints.

THE **WELL-PLACED EXTERIOR MIRRORS** give you a full view of the road. They feature both a flat and a convex surface for added visibility.



AN **ELECTRONIC ALLISON® 1000 SERIES™ TRANSMISSION** features Smart Logic, which learns your driving habits to fine-tune its shifting tendencies for optimum performance.

A **7,000 WATT ONAN® MARQUIS GOLD™ GENERATOR** comes standard. It is the quietest generator in its class with digital voltage regulation for optimum output. Choose the available 7,000 watt Onan Marquis Platinum™ for fuel-injected performance.

MAXIMUM STOPPING POWER IS ASSURED with 4-wheel anti-lock, twin-piston disc brakes, without the added maintenance associated with air brakes.

22.5" TIRES provide improved ride and handling characteristics. The stylized aluminum wheels are extremely strong and will look great for years.

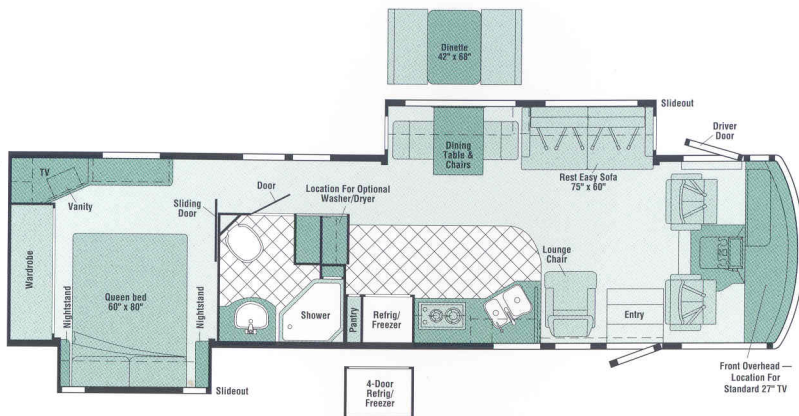
THE **SUNFLYER DELIVERS A BETTER PERFORMANCE AND SMOOTHER RIDE** thanks to an 82.6" wide stance and variable ratio steering gear.

THE **8100 VORTEC 8.1L V8 ENGINE** delivers 340-hp and 455 lb.-ft. of torque for impressive power and acceleration.



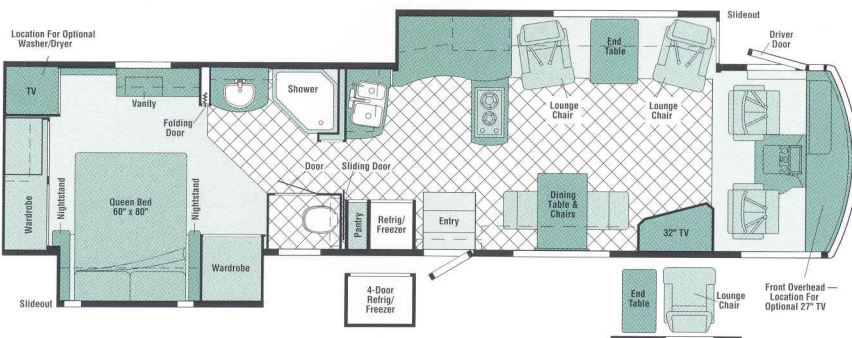
THE **FRONT SLIDEROOM** features the StoreMore slideout system with large, well-lit compartments that accommodate bulky and odd-shaped items. Best of all, these compartments extend with the slideroom so they can be accessed without crawling on your hands and knees. You'll also appreciate the gas struts and single-paddle latches. They make opening and closing compartment doors almost effortless.

SUNFLYER FLOORPLANS



36W

- Sofa/dining table w/ **STOREMORE** slideout system
- Bedroom area slideout
- Large private bath w/vanity and angled shower
- Bedroom desk/vanity area w/chest of drawers and pull-out hamper
- **REST EASY** Multi-Position Lounge



39L

- Lounge chairs/galley w/ **STOREMORE** slideout system
- Bed/wardrobe slideout
- Walk-through bath design w/private toilet area
- Entertainment center w/32\"

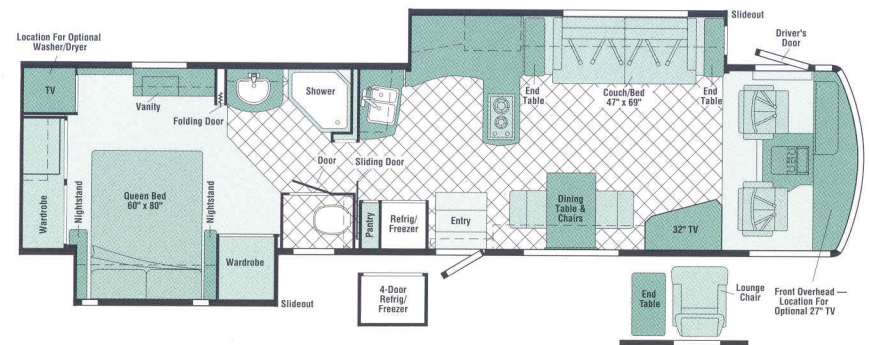


VINYL FLOORCOVERING



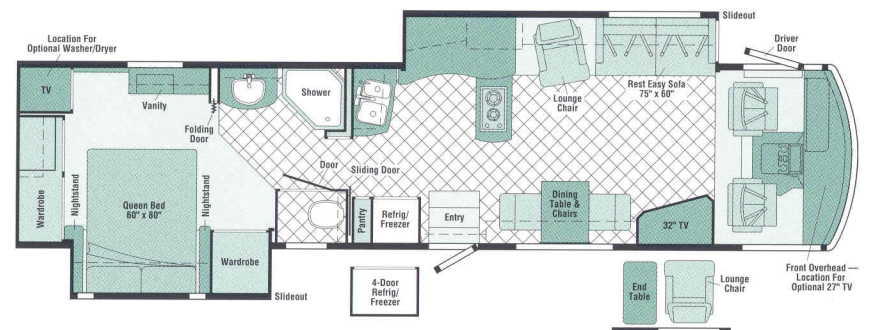
SEAT BELTS

Note: Dimensions shown are for sleeping space only and may vary due to styling differences. Dashed lines denote overhead storage areas.



39C

- Couch/galley w/ **STOREMORE** slideout system
- Bed/wardrobe slideout
- Walk-through bath design w/private toilet area
- Entertainment center w/32\"



39T

- Sofa/lounge chair/galley w/ **STOREMORE** slideout system
- Bed/wardrobe slideout
- Walk-through bath design w/private toilet area
- Entertainment center w/32\"
- **REST EASY** Multi-Position Lounge



MEDIUM TITANIUM METALLIC



SAND METALLIC

THE PERFECT BLEND OF FUNCTION AND STYLE. The Itasca Sunflyer is equipped with stylized aluminum wheels for performance and beauty. Hydraulic leveling jacks provide added stability while the standard patio awning provides instant shade. An electric awning with remote control is also available.



2003 SUNFLYER SPECIFICATIONS

	36W	39C	39L	39T
Length	36'6"	39'6"	39'6"	39'6"
Exterior Height*	11'10"	11'10"	11'10"	11'10"
Exterior Width^	8'5.5"	8'5.5"	8'5.5"	8'5.5"
Exterior Storage ∞ (cu. ft.)	78.3	136.2	136.2	136.2
Interior Height	6'8"	6'8"	6'8"	6'8"
Interior Width	8'	8'	8'	8'
Fresh Water Capacity w/Heater* (gal.)	80	80	80	80
Holding Tank Capacity – Black/Gray (gal.)	45/67	48/58	48/58	48/58
LP Capacity ∇ (gal.)	28	28	28	28
Fuel Capacity (gal.)	75	75	75	75
GCWR (lbs.)	26,000	26,000	26,000	26,000
GVWR (lbs.)	22,000	22,000	22,000	22,000
GAWR – Front (lbs.)	8,500	8,500	8,500	8,500
GAWR – Rear (lbs.)	15,000	15,000	15,000	15,000
Wheelbase	228"	266"	266"	266"

AUTOMOTIVE/CHASSIS

	36W	39C	39L	39T
Chassis – Workhorse™ 8.1L Vortec V8 engine, 340-hp, Allison® LCT 1000 5-speed overdrive electronic transmission, 145-amp. alternator, 4-wheel anti-lock brakes	S	S	S	S
Leveling Jacks hydraulic, manual touch pad, Tire Tool wrench, Trailer Hitch + 5,000-lbs. draw bar/500-lbs. maximum vertical tongue weight & wiring, Wheels stylized aluminum	S	S	S	S

CAB AREA & DRIVER CONVENIENCES

	36W	39C	39L	39T
Cab Seats (UltraLeather HP™) w/3-point adjustable seat belts, adjustable armrests, lumbar support, multi-adjustable slide/recline, swivel, Cab Sound Control Package , Cigarette Lighter/12-Volt Powerpoint , Compass electronic w/outdoor thermometer, Convenience Tray , Defroster Fans (2) auxiliary 2-speed w/instrument panel switch, Door driver w/power window & lock w/remote, Floor Mats carpet driver & passenger, Light courtesy, driver door panel, Map Lights (2), Monitor System rearview, color, w/single camera & 1-way audio, Sony®, Shades filtering roller shades, cab windows, Steering Wheel custom w/tilt & power assist, Sunvisors (2) powered, Trim Panel (driver) leveling system controls, power door locks, power window, exterior mirror heat & adjust controls, Trim Panel (passenger) ledge, Window (passenger) full slider w/screen, dual-glazed/thermo-insulated, Windshield Wipers intermittent	S	S	S	S
Cab Seat Pedestal 6-way power assist (driver)	0	0	0	0

CAB AREA & DRIVER CONVENIENCES (CONT.)

	36W	39C	39L	39T
GPS Navigational System* Alpine®	0	0	0	0
Workstation dash	0	0	0	0

ENTERTAINMENT

	36W	39C	39L	39T
CB Prep antenna, antenna lead, Entertainment Center (Exterior) w/ Cassette DC receptacle, AC duplex receptacle, AM/FM radio, TV jack, radio antenna, speakers (2), lockable compartment, Radio (Cab) AM/FM stereo, cassette/CD player w/weather band, roof-mounted, flexible rubber antenna, Radio Power Switch main/auxiliary battery, Satellite System Ready , Sound System deluxe, w/5-channel QSurrround™, amplifier, cube speakers (4), sub-woofers (2), center channel speaker, Telephone input & interior jacks, TV 19" Color AC w/remote, bedroom, TV Enhancement Package antenna (amplified), interior jack(s), coax wiring, cable input, antenna check reminder light, exterior antenna jack, VCR stereo w/remote, Video Selection System	S	S	S	S
Entertainment Center Cabinet TV 32" color AC stereo w/remote (lounge area)	S	S	S	S
Compact Multi-disc Changer 10-disc changer w/remote, Sony®	0	0	0	0
DVD (digital video disc) player	0	0	0	0
Entertainment Center (Exterior) w/ CD Player DC receptacle, AC duplex receptacle, AM/FM radio w/remote, TV jack, radio antenna, speakers (2), lockable compartment	0	0	0	0

ENTERTAINMENT (CONT.)

	36W	39C	39L	39T
Radios (4) two-way, docking port w/charger	0	0	0	0
Satellite Dish Antenna Winegard®, RV digital, digital elevation sensing unit, manual	0	0	0	0
Satellite Dish Antenna* Winegard® RV digital, power	0	0	0	0
Stereo System (Bedroom)* AM/FM cassette, alarm clock	0	0	0	0
Stereo System (Bedroom)* AM/FM CD player, alarm clock	0	0	0	0
TV 27" Color AC Stereo* w/remote, front overhead w/storage area	S	0	0	0

INTERIOR

	36W	39C	39L	39T
Accessory Package rechargeable flashlight, rechargeable vacuum cleaner, Ceiling fabric, Clock , Shade front wraparound w/pull cords, Lights ceiling, incandescent, Lights fluorescent, recessed, galley, lounge, bath, hallway w/wall switches, Lights halogen, Lights reading, Picture , Shades day/night pleated (lounge & bedroom areas), micro-mini blind (galley area), Windows dual-glazed/thermo-insulated	S	S	S	S
Central Vacuum Cleaner	0	0	0	0

CABINETRY

	36W	39C	39L	39T
Woodgrain Portsmouth Oak stile-and-rail construction w/arched raised-panel inserts on upper & raised-panel inserts on lower doors	0	0	0	0
Woodgrain Washed Maple stile-and-rail construction w/arched raised-panel inserts on upper & raised-panel inserts on lower doors	0	0	0	0
Woodgrain Concert Cherry stile-and-rail construction w/arched raised-panel inserts on upper & raised-panel inserts on lower doors	0	0	0	0

COUNTERTOPS

	36W	39C	39L	39T
Solid-Surface galley, bath & bedroom areas, Laminate w/wood beveled edge, dinette (36W only)	S	S	S	S

FLOORCOVERING

	36W	39C	39L	39T
Carpeting w/pad, cab & bedroom area, Vinyl Tile galley & bath areas	S	S	S	S
Area Rug , Vinyl Tile lounge		S	S	S

FURNITURE	36W	39C	39L	39T
Dining Table & Chairs (2) free standing, (2) folding, table w/extendable self-storage leaf	\$	\$	\$	\$
BenchMark® Full Comfort Dinette (Fabric) access to storage below	0			
Couch* (Fabric) w/end tables	\$			
Couch* (UltraLeather HP™) w/end tables	0			
Lounge Chair (Fabric) hoop-base w/end table, passenger-side	0	0	0	
Lounge Chair (Fabric) hoop-base, driver-side			\$	
Lounge Chair (Fabric) hoop-base, passenger-side	\$			
Lounge Chairs* (2) (Fabric) w/end table			\$	
Lounge Chair (UltraLeather HP™) hoop-base, passenger-side	0	0	0	0
Lounge Chair (UltraLeather HP™) hoop-base, driver-side			0	
Lounge Chairs* (2) (UltraLeather HP™) w/end table			0	
Rest Easy® Multi-Position Lounge (Fabric)	\$	\$		
Rest Easy® Multi-Position Lounge (UltraLeather HP™)	0	0		
Rest Easy® Multi-Position Lounge (UltraLeather HP™) w/dual recliners	0			

GALLEY	36W	39C	39L	39T
Coffemaker, Faucet single-control w/pull-out sprayer, Light ceiling, fluorescent w/decorative wood frame, Light decorative w/dimmer, Light fluorescent, under cabinet, Microwave/Convection Oven w/Range Fan exterior vented, residential 30" Sharp® Princess, Pantry* slideout w/adjustable shelves, Range Top 2-burner recessed, Seaward® Princess, Range Cover flush-mounted (countertop material), Refrigerator/Freezer large double-door w/icemaker, Norcold® Roof Vent powered, insulated ventilator fan, Silverware Tray, Sink double-bowl molded Swanstone™ w/sink covers, Towel Rack, Wastepaper Basket w/pull-out tray, Utility Tray tip-out, Water Purification System Everpure® w/separate faucet	\$	\$	\$	\$
Appliance Storage Cabinet	\$	\$	\$	
Dishwasher built-in under countertop	0	0	0	
Microwave/Speedcook Oven w/Range Fan* residential 30" G.E. Advantium™	0	0	0	0
Mirrors beveled edge	\$			
Refrigerator/Freezer* 4-door w/icemaker, Norcold®	0	0	0	0
Wall Border	\$	\$	\$	

BATH	36W	39C	39L	39T
Cabinet lavatory, Cabinet medicine, Faucet (lavatory) dual-control, Faucet (shower) single-control w/fixed showerhead, Hair Dryer wall-mounted w/night-light, Light shower, Lights makeup, Roof Vent power, insulated, Shower Door glass, Skylight, Sink oval, Tissue Holder, Toilet (Porcelain) w/foot-pedal flush, Towel Rack 3-rod, mounted to door, Towel Ring	\$	\$	\$	\$
Cabinet linen, Chair Rail, Magazine Rack, Roof Vent, Towel Bar	\$	\$	\$	
Mirror frameless w/beveled edge	\$			
Shower Package hand-held showerhead, fold-down bath shower seat	0	0	0	0

BEDROOM	36W	39C	39L	39T
Alarm Clock nightstand area, Bed queen-size, Sleep Number® by Select Comfort™ pillow top, w/underbed storage, Bedspring, Throw Pillow, Fabric Headboard w/Wood Trim, Ceiling Molding, Hamper pull-out, Light decorative w/dimmer switch, Lights decorative wall lamps, Nightstands, Vanity Cabinet w/drawers & tip-up mirror, Wainscoting w/chair rail, Wardrobe Cabinet carpeted, clothes rod, drawers (NA 36W), light, shelf, cedar-lined	\$	\$	\$	\$

EXTERIOR	36W	39C	39L	39T
Awning* patio, Awning Rails, Door entrance, w/separate screen door, deadbolt lock, Door fuel-fill, locking, Entrance Door Steps electric w/doorjamb switch, Exterior Graphic Packages Sand Metallic recommended w/Sienna, Cornucopia or Silver Brocade, Medium Titanium Metallic recommended w/Sienna, Cornucopia or Silver Brocade, Ladder, Lights docking lamps, Lights fog lamps, Light porch light w/interior switch, Light service, driver side, Light under hood, Mirrors electric remote w/defrost, Mudflaps rear, Receptacle AC duplex, Sidewall Skin 1-piece smooth, fiberglass, high-gloss, Storage Compartments smooth valance panels, trunk liner, Tri/Mark® KeyOne™ System opens driver door, entrance door, fuel-fill door, gravity water fill door & storage compartments, lights, single paddle latch	\$	\$	\$	\$
Air Horns roof-mounted	0	0	0	0
Awning* electric, patio, w/wind sensor & remote	0	0	0	0
Spotlight roof-mounted w/wireless remote	0	0	0	0

SYSTEMS	36W	39C	39L	39T
Automotive Heater/Air Conditioner, Auxiliary Start Circuit, Batteries (Coach) (3) deep cycle, Battery (Coach) disconnect system, Battery Charge Control automatic dual, Drain 1" water tank, Electrical Distribution System AC & DC breaker panels, Furnace 40,000 BTU, low profile, Generator 7,000 watt, Onan® Marquis Gold™ gas, Generator/Shoreline Automatic Changeover Switch, Home Comfort Plus Package central air heat pump, auxiliary automotive heater, insulated power ventilator fans (bath & galley), Inverter/Charger DC/AC, 2,000 watt w/remote panel, ONEPLACE™ Systems Center wall-mounted, battery digital voltmeter, POWERLINE™ Energy Management Display, generator hourmeter gauge, generator start/stop switch, holding tank levels, LP tank level, solar panel/battery charger light, water heater switch, water heater on light & pilot indicator light, water pump switch, water tank level, Power Cord 50-amp. cord, POWERLINE™ Energy Management System, Powerpoint(s) 12-volt, Service Center (Electrical/Water) cable TV input, city water hookup/tank diverter fill, drainage valves, exterior wash station w/pump switch, power cord, sewer hose, telephone input, paper towel holder, soap bottle holder, monitor panel, Solar Panel 10 watt battery charger, Tank flushing system, black tank only, Tank holding, heated compartment, Tank LP permanent mount w/gauge, TRUEAIR™ Residential Central Air Conditioning System, Water Heater 10-gallon electronic ignition, LP gas/110 vac w/Motoraid® Water Heater Winterization Bypass Valve manual, Wash Station exterior, Washer/Dryer Prep, Water Pump demand, Water System Winterizing Valve manual, Water Tank Fill gravity w/lockingdoor, Water Tank Fill pressurized city hookup w/diverter valve	\$	\$	\$	\$

SYSTEMS (CONT.)	36W	39C	39L	39T
Generator 7,000 watt, Onan® Marquis Platinum™ gas	0	0	0	0
Washer/Dryer Combination	0	0	0	0
Water System Winterizing Kit automatic	0	0	0	0

SLIDEOUT	36W	39C	39L	39T
Slideout Room front (couch/dinette) flat-floor slideout, w/slidooroom cover, STOREMORE® Slideout Room rear (bed) w/slidooroom cover	\$			
Slideout Room front (lounge/galley) flat-floor slideout, w/slidooroom cover, STOREMORE® Slideout Room rear (bed/wardrobe) w/slidooroom cover	\$	\$	\$	\$

SAFETY	36W	39C	39L	39T
Assist Bar interior, Assist Handle exterior, acrylic w/logo, Bumpers front & rear, Detectors/Alarms LP leak, smoke, carbon monoxide, Fire Extinguisher 10 B.C., Ground Fault Interrupter, Light center high-mount brake lamp, Lights courtesy w/wall switches, Lights daytime running lamps, Window escape, Windshield laminated safety glass	\$	\$	\$	\$

WARRANTY	36W	39C	39L	39T
12-month/15,000-mile basic warranty, 36-month/36,000-mile warranty on structure,** 10-year limited parts & labor warranty on roof skin	\$	\$	\$	\$

- The height of each model is based on the curb weight of a typically equipped unit on the standard chassis. The actual height of your vehicle may vary by as much as 2" depending on chassis or equipment variations.
- ^ Sunflyer® floorplans feature a wide-body design — over 96". In making your purchase decision, you should be aware that some states restrict access on some or all state roads to 96" in body width. Before making your purchase decision, you should confirm the road usage laws in the states of interest to you.
- ∞ Your motor coach's load capacity is designated by weight, not by volume, so you cannot necessarily use all available space when loading your motor coach.
- * Not all items available in combination. See dealer for details.
- ◇ Capacities shown are tank manufacturer's listed water capacity (W.C.). Actual filled LP capacity is 80% of listing due to overfilling prevention device on tank.
- \$ Standard
- 0 Optional
- + Actual towing capacity is dependent on your particular loading and towing circumstances which includes the GVWR, GAWR and GCWR as well as adequate trailer brakes. Please refer to your vehicle's operator's manual for further towing information.
- NA Not Available
- ** See your dealer for complete warranty information.

Winnebago Industries® continuing program of product improvement makes specifications, equipment, model availability and prices subject to change without notice. Comparisons to other motor homes are based on the most recent information available.

Not all motor homes are created equal. Take a closer look and you'll see there is much more to an Itasca Sunflyer than a long list of standard features and compelling floorplans. Beneath it all, you'll find a SuperStructure™ foundation of strength and durability.



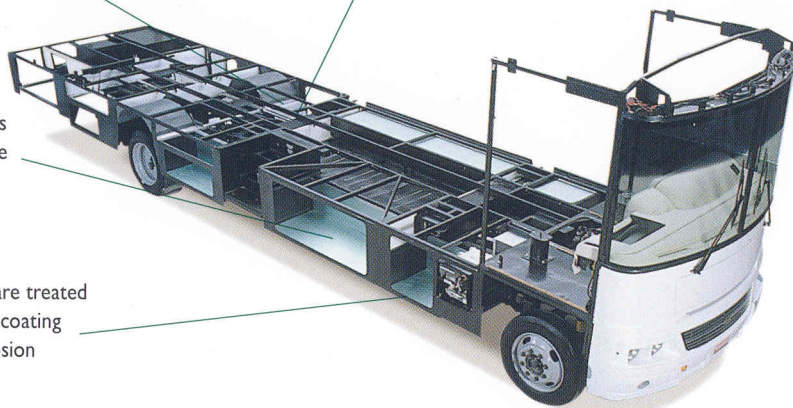
SuperStructure is the term given to Winnebago Industries' structural motor home design and construction. Rather than a single component, it is the culmination of design integration that incorporates steel and aluminum substructures, composite-design laminated floor risers, interlocking joint technology and Thermo-Panel® floor, roof and sidewalls to form an incredibly strong, durable vehicle body.

LAMINATED RISERS feature a welded aluminum core for superior strength and provide a stable base for the floor structure and storage compartments.

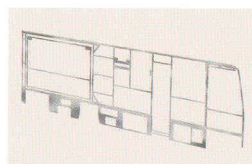
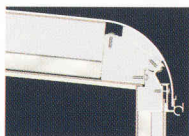
THE FOUNDATION SUBSTRUCTURE assembly is precision-aligned to maximize longitudinal and cross-coach support as well as strength and durability.

STORAGE COMPARTMENTS attach to outrigger assemblies so that the weight of stowed items is carried and dispersed throughout the foundation substructure.

CRITICAL STEEL COMPONENTS are treated using an advanced electrodeposition coating process that provides superior corrosion protection.



INTERLOCKING JOINT CONSTRUCTION utilizes advanced aluminum structural components to create integrated floor-to-sidewall and sidewall-to-roof joints. This design effectively distributes the weight of the walls and roof, making a stronger and more durable body than competitor designs which rely on screws to carry the weight.



WE INVENTED THERMO-PANEL SIDEWALL CONSTRUCTION and over the years have perfected this innovative composite construction process. It combines an exterior fiberglass panel, high-density block foam insulation and welded aluminum support structures to create some of the strongest, most durable and lightweight sidewalls in the industry.



1-YEAR OLD ITASCA FIBERGLASS ROOF



1-YEAR OLD COMPETITOR'S RUBBER ROOF

BUILT TO A HIGHER STANDARD. The Sunflyer features a crowned, one-piece fiberglass roof backed with a 10-year limited parts and labor roof skin warranty. Fiberglass offers superior strength, attractiveness and durability over the rubber roofs found on many competitive models which can chalk, streak and degrade over time. Fiberglass also provides increased puncture and tear resistance.

COMMITTED TO SERVICE. We back our motor homes with the best service after the sale in the industry.



TRIP Saver
FAST TRACK PARTS

- 12-month/15,000-mile basic limited warranty
- 36-month/36,000-mile warranty on structure
- Standard 10-year limited parts and labor roof skin warranty
- Complimentary 24-hour roadside assistance program
- TripSaver Fast Track Parts. TripSaver guarantees that in-stock warranty parts ship directly to your dealer within 24 hours.
- National dealer service network



RECOGNIZED QUALITY. Recreation Vehicle Dealer Association members annually rate RV manufacturers on the quality of their products, and sales and service support. Winnebago Industries has achieved the coveted Quality Circle award every year since its inception, the only major motor home manufacturer to do so.



ALL MOTOR HOMES ARE NOT CREATED EQUAL.

Learn more about what sets Winnebago Industries apart. Ask your dealer for this guide. It will help you learn what makes Winnebago Industries motor homes distinctly superior to other brands.

WARNING: JOINING WIT HAS BEEN KNOWN TO CAUSE EXCESSIVE FUN.

Winnebago-Itasca Travelers (WIT) is a club for owners of Winnebago Industries motor homes. WIT is a great way to meet people and offers you:

- Caravans and rallies
- Local and state group activities
- RV travel benefits



winnebagoind.com

For Sales and Service Information Contact:



©2002 Winnebago Industries, Inc.



Printed in USA

Seat belts are your most important hookup. Always buckle up.